

The Spectator

11-17-1970

Spectator 1970-11-17

Editors of The Spectator

Follow this and additional works at: <http://scholarworks.seattleu.edu/spectator>

Recommended Citation

Editors of The Spectator, "Spectator 1970-11-17" (1970). *The Spectator*. 1235.
<http://scholarworks.seattleu.edu/spectator/1235>

This Newspaper is brought to you for free and open access by ScholarWorks @ SeattleU. It has been accepted for inclusion in The Spectator by an authorized administrator of ScholarWorks @ SeattleU.

Senate Meet Ends in Budget Delay

Approval of the proposed \$53,-475 ASSU budget by the student senate could not be reached at Sunday's lengthy session, as the meeting broke up when the number of senators present dropped below that needed for a quorum.

Although a vote on the total budget appeared near, the meeting ended abruptly when senator Paula Laschober walked out during discussion of an amendment, reducing the number of senators present to seven. Eight are needed for a quorum.

Thirteen of the sixteen senators were originally present at the three and one half hour meeting.

MOMENTS before the meeting ended, the senators had voted down a proposal by Laschober to cut a total of \$800 from the allotments of the Associated Women Students, the President's banquet, and the senate general fund and add that amount to the proposed \$2,200 allotment for International Relations Club (Model United Nations).

Several angered senators interpreted Laschober's walk-out as a protest against that vote. She is a member of MUN and was an organizer in the effort to bring next year's West Coast session of MUN to S.U.

A SHORT DEBATE preceded the vote on Laschober's proposed amendment. Paul Schwaighart, financial board member, noted that MUN's proposed allotment represents an increase

of \$1,500 over last year, in anticipation of the upcoming West Coast general session, and that MUN can expect another increase next year.

Schwaighart pointed out that MUN's budget request had been cut in the area of travel expenses. MUN had asked that the ASSU pay all expenses to send a 25 member delegation to this year's West Coast MUN meet in San Francisco.

SCHWAIGHART also said that other campus organizations with travel expenses pay for part or all of them out of their own pockets. In the proposed MUN allotment the ASSU would pay for a little more than half of the expenses.

Earlier, the senators had voted by a nearly two to one margin to consider the budget and vote on it that day. The loss of a quorum nullified that resolution.

SENATORS Barry Fountain and Jim Tollefson had argued that more time was needed to consider the budget. Senator Pat Flume agreed with Eeckhoudt that immediate passage of the budget was desirable for all parties concerned. Last year's budget was not approved until February.

The delay is one of several the ASSU budget has encountered despite the efforts of Eeckhoudt and the financial board to speed its completion.

The financial board had a completed budget ready for presentation several weeks ago,

but substantial revisions had to be made when a disagreement arose between the ASSU and the administration as to how much money the student government would have to work with this year.

THE AMOUNT guaranteed by the administration was considerably less than the ASSU had planned for using the traditional guideline of six percent of student fees. Heated discussions between the ASSU and administration ensued, but Eeckhoudt said that agreements have been reached.

Eeckhoudt added that the ASSU is continuing to deal with the administration in several areas of finances. He said that next year student fees will be

lumped in with tuition and the ASSU is looking for ways to protect its source of revenue.

The senate considered the entire proposed budget carefully, questioning many areas. Areas that came under special scrutiny included the Aegis, AWS, Drill Team, Crew, Special Events, and the senate general fund.

In drawing up the budget, Eeckhoudt explained, the financial board considered whether a club was worthwhile and needed help. John Garner, senator and financial board member, added that a club's openness to the student body was also taken into account.

IN OTHER business, Steve Lemon and Susan Medved were

approved as student representatives to the Student-Faculty Conduct Review Board. Newly elected senators Bob Armstrong, Cynthia Whetsell, Vivian Luna, and Pat Flume were sworn in, as were appointed senators Barry Fountain, Pat Lupo, and Lindsey Draper.

The approval of the constitution of the Sky Diving Club was again postponed until legal questions of liability for accidents can be clarified.

ASSU 1st Vice President John McLean discussed several ideas under consideration in his office, including a winter quarter critique day to be organized by Draper and the incorporation of AWS into the structure of the ASSU.



SEATTLE Spectator UNIVERSITY

Vol. XXXIX, No. 15

Seattle, Washington

Tuesday, November 17, 1970

Minority Art Exhibit on Display This Week in Lemieux Library

by Shari Quest

Many aspects of the realm of black culture and black society are aptly expressed through works in a variety of techniques at the Black Arts Exhibit.

The showing is sponsored by Students of the Afro-American Movement for Equality, SAAME, and organized under the leadership of president Prince Daniels. It is scheduled to run through Nov. 22 in the Stimson Room of the Lemieux Library.

ARTISTS contributing to the show are from S.U., U.W., and from the community. U.W. artists represented are Eddie Ray Walker and Joe Small; S.U. artists, Sam Pierce, Linda Martin and Paula Follings; and from the community, Mrs. Timmerman and Dion Henderson.

Techniques include acrylics, charcoals, pen and inks, woodcuts, felt portraits, pencil, oils, plastic crafts, pottery and tapestry. Modes include modernistic studies in color and form, abstracts, impressionism, realism, and poster art.

Eddie Walker's style is versatile, including a flair for surrealistic studies in color and form, realism and impressionism. His color and form studies reflect clarity and boldness in their impression through the use of a duality of colors, sweeping lines, expansiveness of size and exaggerated features of faces.

HIS "EYES ON THE SPARROW" is typical of this, in vibrant sun colors that illuminate a black woman's face with a sunrise in the background, suggesting a new age, a new hope.

Two striking creations by Walker in the realistic style are charcoal portraits of black girls. Both are softly expressive and nearly velvet-like in appearance.

One, "Black Woman," illuminates a few facial areas and in doing so communicates a striking amount of character expression. His whimsical "Mmmm" also illustrates his deftness at recreating expression.

WALKER'S posters, "Bluesman" and "Assassination," are also expression studies, copies of which are on sale at the showing.

Dion Henderson is from the community and displays a flair



—photo by pat derr

DION HENDERSON, left, and Eddie Walker arrange works at the Black Arts Exhibit in the Stimson Room at the Library.

for artistically depicting the black talent in the musical world. His character interpretations include Miles Davis on trumpet, a striking, impressionistic figure composition on a stark white canvas. This might be considered one of the finest pieces in the show.

His pen and inks interpret Cannonball Adderly, B. B. King and Buddy Miles. His poster of B. B. King has tremendous composition, constructed of perspectives of profiles and front view, which give it real visual impact.

PAULA FOLLINGS' entries include abstracts, woodcuts after Vermeer and Constable, and one piece entitled "Man on a Scaffold" that shows a good hand for expression through simplicity and contrast.

An impressionistic, interpretive portrait on felt is one of the more intriguing pieces in the showing. It was composed by Joe Small and depicts a black youth with a fiery and aloof expression.

Small also has a black/white composition entitled "Suppression" which suggests the black fitted into an inhuman mold amid a white surrounding background.

A MEMBER of the community, Mrs. Timmerman is orig-

inally from Indonesia and displays some intricate tapestries and plastic crafts in the show.

Sam Pierce of S.U. takes the credit for the abstracts in the show, executed in low-intensity colors within defined boundaries—some quite geometric.

One of his abstracts appears to be a slave ship bucking adverse waves in a surge of motion. Another looks like pieces of bodies of many races, dehumanized in the dis-assembly.

ANOTHER appears to be a comment on boxed conventions of society—but these are untitled, and open to individual interpretation.

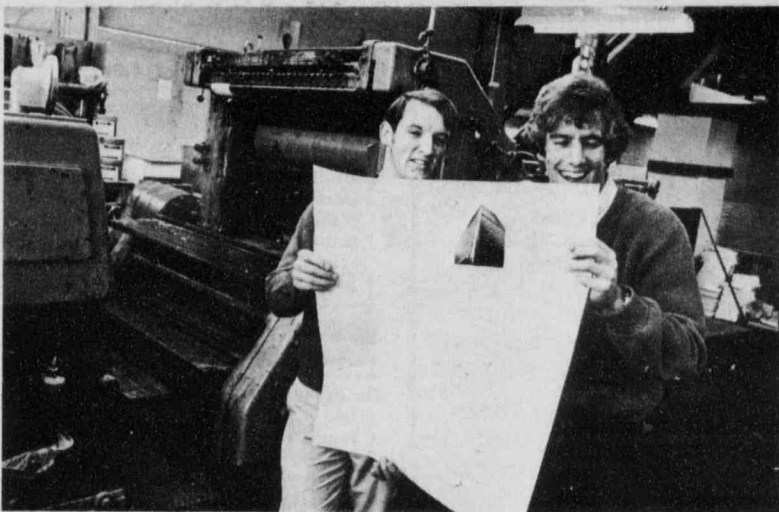
Linda Martin of S.U. contributed pottery pieces, small well-shaped pieces of multiple color and fired glazes.

'Tavern' on Tap At Teatro Inigo

"The Tavern" by George M. Cohan, continues tomorrow night through Saturday night at the Teatro Inigo. Curtain time is 8:30 p.m.

Tickets are \$1.50 for students and \$2 for non-students. Reservations may be phoned to 626-6740.

Revamped 'Locator' Available on Campus



—photo by bob kegel

GUY KELLY, left, and Rich Cook examine pages of the new I.K. student directory "Locator" as they come off the presses.

The 22nd edition of the annual I.K. student directory will have a new name and a new look when it appears on campus this week.

The directory has been renamed The Locator, to indicate that its scope has been widened considerably over previous versions.

THE LOCATOR includes the room numbers and centrex numbers of all dorm residents, as well as their home addresses. The home addresses and phone numbers of "townies" will also

be listed.

A directory of restaurants, theaters, and taverns in Seattle, including descriptions of the services they offer and price ranges, has been added, along with pictures of the Seattle scene and hints on how to spend leisure time.

The Locator, edited by Tom Eshom, will be available for \$1 at the bookstore, the Chieftain, and on the L.A. mall from 9 a.m. to 3 p.m. school days, and at the Bellarmine dining room during meals.

Whetsell, Armstrong Win; Otto is Frosh President

Four senators and the freshman class president were elected in last Tuesday's final election.

A total of 510 students cast their ballots, exceeding the 472 figure who voted in the primary.

Bob Armstrong beat John Barutt for senate seat no. 1 polling 335 votes to Barutt's 155.

Cynthia Whetsell defeated Bryce McWalter for senate seat no. 2 by a 82 vote margin, 296 to 214 votes.

In the race for senate seat no. 3 Vivian Luna outpolled Pat Derr, 372 to 132 votes.

Pat Flume was unopposed for senate seat no. 4 and received 330 votes.

Elected as freshman class president in a three way race was Richard Otto. He won out over Melvin Javonello and Steve Odom. Otto polled 113 votes to Javonello's 49 and Odom's 31 votes.

President Explains 'Hour' Idea

by Doug McKnight
ASSU President

The ASSU Happy Hour originally scheduled for Nov. 13 has been rescheduled for Nov. 20. We felt that this change was necessary to clarify the real purpose of this event.

It is not a contest as to who can drink the most. The Happy Hour has been planned to provide an informal atmosphere where students, faculty, staff, and administration can get to know one another outside of their particular school roles and communicate as individuals.

THE BARRIERS that have

been built between people on this campus must be removed if we are to proceed in a new direction with enthusiasm.

No one at this event will be obligated to even talk about S.U. and there will be no formal meetings or statements. All we ask is that you come, talk to some new people, and treat each other graciously.

If you have some ideas about the University or student government in particular, by all means come and express them especially to the ASSU officers. We are continually searching for new avenues or approaches that will make the ASSU mean-

ingful to students.

EVERY PART of the University is exploring new programs and we are hoping this event may provide some new insights upon which to base them.

Because of campus regulations, refreshments will be served only to those over 21 who have identification to prove it. Soft drinks, also free, will be provided for those who prefer them or those who are under 21.

The purpose of this social gathering is not to get drunk but to stimulate a new spirit among all facets of the University and open up any lines of communi-

cation that have not been utilized in the past.

EVERYONE in the University is invited and encouraged to attend. Come, mingle, and enjoy yourself. Let's begin to create the reality of a University community. It's a new day. Tabard Inn, 3 to 5 p.m., Friday.

Letter To Editor

To the Editor:

As chairman of the Dr. Patricia Smith Convocation Committee, I feel obliged to register deep disappointment that so few of the S.U. community attended the ceremonies last Monday afternoon.

Where were those students who say constantly that the University is not "relevant" to contemporary problems and not "involved" in helping the world's poor and under-privileged?

Where were those lay faculty who complain annually about the selection of recipients for our honorary degrees? Where were those Jesuit Fathers who claim that only their presence on campus can insure a Christian atmosphere of love for one's neighbor?

WE HAVE HEARD so much recently about S.U.'s financial crisis, and certainly these problems are very real. If, however, we can dismiss from classes 3,000 students and 200 faculty members in order to honor one of the leading humanitarians of the twentieth century, and are unable to fill a 500-seat auditorium right on campus, then I submit that financial problems should be the least of our worries.

To those who attended the convocation, sincere thanks from the committee and from Dr. Pat.

Very truly yours,
Joseph J. Gallucci, Jr., Ph.D.
Associate Professor of Music

Newsbriefs

Student-to-Student Seeks Staff

The Student to Student committee is currently seeking members who will be willing to recruit during the Christmas break.

Anyone interested in recruiting is asked to come to the High School Relations office on the second floor of Pigott, or call ext. 5467.

The committee has also scheduled a meeting today at 3 p.m. in the High School Relations office for students who volunteered to recruit between now and Thanksgiving.

The committee has asked that if anyone knows of any prospective freshmen or transfer students who wish to visit campus or stay overnight, to notify their committee and they will arrange the visit.

activities board

There will be a meeting of the Activities Board this Thursday at 2:30 p.m. in the Chieftain conference room.

If a club did not send a representative to the earlier meeting last week, it must send one to this meeting or else lose the opportunity to sponsor any all-school events for winter quarter.

The activities calendar for the winter quarter will be finalized at this meeting.

marketing panel

Pi Sigma Epsilon, marketing fraternity, is sponsoring a panel discussion for business students tomorrow night at 8 p.m. in the Library Auditorium.

Marketing executives from four local firms will discuss "The Different Aspects of Marketing."

The speakers include Bruce Mumford, director of sales, Olympic Hotel; Herb Woodley, sales manager for the Grandma Cookie Co.; Don Navarre, general sales manager for Washington Natural Gas Co.; and Greg Barnes, vice president of Selo Electric Co.

gamma pledge

Gamma Sigma Phi, women's service honorary, is hosting a fall social tonight at 7:30 p.m. in the Bellarmine snack bar.

Gammas perform a variety of activities on campus and this year plan to do community work and possibly some tutoring.

The organization is open to sophomore, junior and senior women with a 2.25 gpa. Applications will be available at the social or by contacting Gamma president Kathy Konsbruck at EA 4-2811.

The applications can be turned in at the desk in Bellarmine Hall. Final deadline is Nov. 25.

The Spectator

Published Tuesdays and Thursdays during the school year except on holidays and during examinations by Seattle University. Edited by S.U. students with editorial and business offices at 825 Tenth Ave., Seattle, Wash. 98122. Second-class postage paid at Seattle, Wash. Subscription: \$4.50 a year; close relatives, alumni \$3.50; Canada, Mexico \$4.00; Other foreign addresses \$6.25; airmail in U.S. \$9.00.

mun

Model United Nations is accepting applications from those interested in a position on the French delegation that will attend the MUN session at Occidental College, Los Angeles, next April.

Positions on the Secretary-General's staff are also open. Those in any major are welcome.

Students interested in public relations, television and newspaper coverage in both inter-college relations and with local television stations and newspapers are being sought.

Applications for positions will be given out during the MUN meeting tomorrow at 7 p.m. in Pigott 453.

time sheets

Student time sheets, both Work-Study (pink) and Non-Work Study (blue) must be submitted by 4:30 p.m. today to the Financial Aid Office, Bookstore 110.

Non-student time sheets are also due today.

Pay sheets submitted after the deadline will not be honored

until the following pay period. Hours worked from Nov. 18 on should be included in the next time sheet.

The deadline has been moved up due to the Thanksgiving holiday. Payroll checks will be ready for distribution on Dec. 1.

thalia

Thalia orchestra will present a musicale at 12:15 p.m. tomorrow in the Library Auditorium.

The musicale will feature Mrs. Frances Walton playing her compositions "String Quartet I," "Woodwind Octet," and "Brass Fanfare." Mrs. Walton is a cello teacher in the fine arts department.

An exhibit featuring self portraits by Robert Dylan, George Gershwin, Paul Hindemith, Darius Milhaud, Vincent Persichetti, Camille Saint Saens, Mikael Scheremetiew, and Frances Walton will be located at the entrance to the auditorium.

This program and exhibit will be presented with the cooperation of the fine arts department and the Mikael Scheremetiew Library.

U. & I. OPTICAL

Examinations
Contact Lenses
Glasses
Repairs

U. & I. OPTICAL
EAst 5-1214

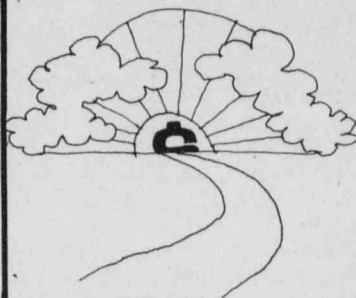
616 1/2 BROADWAY
(Broadway between Cherry & James)



NBofC has an easier way to balance your budget.

Unsteady about your finances? With an NBofC checking account you simply reconcile your checkbook with our statement each month and you're back in control. NBofC checking—an easier way to balance your budget.

NATIONAL BANK OF COMMERCE **NBC**
MEMBER F.D.I.C. • ACCOUNTS INSURED TO \$20,000 EACH DEPOSITOR.
First Hill Office: 1201 Madison Street



This is the dawning of the Age of Security.

Today's college student is on to the future. He understands the importance of having financial security. And he'll start to plan for it now. By investing in a life insurance program that provides for now, and the future.

At Provident Mutual we have the precise program for college students. The earlier you start, the less it costs. And the more security you'll have a chance to build.

Give us a call. Or stop by our campus office. Make this the dawning of your Age of Security.

Bob Pigott
ME 2-2979

PROVIDENT
MUTUAL LIFE
INSURANCE COMPANY OF PHILADELPHIA

CLASSIFIED

CLASSIFIED ADS:
6c Per Word

3 Times for Price of 2

DISPLAY ADS:

\$2.20 Per Column Inch
Discounts Available

SPECTATOR Advertising
Phone: 626-6853

Typing

Experienced I.B.M. Donna Rich
Cooper, WE 7-2423.

TYPING, my home. EA 4-8024.

PROFESSIONAL Typist. I.B.M. Selectric offers choice of type styles. Broadway district. EA 3-3244.

For Sale

A Pentaview-spotron exposure meter, best offer. Call 626-6387.

STEREO — 1970 component with AM-FM multiplex radio; Gerrard turntable, air suspension speakers, walnut wood cabinet. Guarantee, regular com. value over \$400, now only \$175. Terms available. GL 5-1250.

Sleeping Bag, 3 lbs. down fill \$45. 2 lbs. \$35. 2 man mountain tent, \$30. Call GL 5-1250.

\$10,000 low cost life insurance (group), \$18 a year up to 20 and \$21 a year for ages 20-29. No exclusion and no war clause. Call ME 2-2979 Bob Pigott.

Sewing Machine, 1970 automatic. New. Guarantee. Decorative patterns, button-hole, zig-zag, monogram. Regular com. Value \$299. Now only \$99.50. Terms available. GL 5-1250.

Stereo console, walnut wood, AM-FM multiplex radio. D.S.R. turntable, 8 speaker system. Guarantee. Regular com. value \$375. Now \$185. Terms available. GL 5-1250.

Help Wanted

Wanted Female Roommate: Spacious apartment only 1/2 block from S.U. and ONLY \$50 a month. Your own bedroom. Call EA 4-9288.

Part-Time girl for office work, some typing and filing. Must be available during Christmas holidays. Call Mrs. Terrill, EA 4-5850.

For Rent

SPACIOUS 4 bedroom home with basement storage. Compl. furnished, utilities and electricity provided. 2-car garage. Close to school. \$216 month. 822-8649 or EA 9-8800.

Apts. for Rent

Furnished 4 bedroom house, utilities incl. and garage. Walking distance to S.U. From \$50. Call EA 9-8800 or VA 2-8649.

SPACIOUS one bedroom furnished or unfurnished, \$100 and up; EA 2-5487 or PA 3-0685.

Room in nearby Scandinavian home, 1121 15th Ave. \$45. 322-0632.

ST. PAUL-ARCADIA. Near campus, housekeeping rooms, \$35-\$50, studio \$60-\$80, 1 bedroom \$125, 2 bedroom \$135, 3 bedroom \$150. 1308 Seneca, 1222 Summit. EA 5-0221.

Walk to U., furnished units from \$50. EA 5-7062.

CARRIAGE HOUSE

Downtown Luxury Apts.
Furn. and Unfurn., from \$110.00
Bachelor, 1 and 2 Bdrms.
1707 Boylston EA 4-3388

Lovely apts., carpeting, 1, 2, & 3 bedrms., spectacular view, lanais, parking. 5 minutes from S.U., on bus line. From \$125. Ideal for students. LA 4-1267 or EA 2-0132.

FROM \$110

Downtown Luxury Bachelor
1 & 2 bedroom view apts. Sauna, undercover parking, game room.
1707 Boylston EA 4-3388

Announcements

Smile... Xavier Lounge.

Cat wants to wish her Bee, Happy Birthday.

CLASSIFIED
ADS BRING
RESULTS!

Crew 'Not Prepared' for Recent Regatta

by Sue Hill
Sports Editor

Regardless of the dedicated rowers' showing on Green Lake Sunday, coach Jim Gardiner is pleased with his team.

With the three last places foremost in his mind, Gardiner said, "I am very proud of these guys. They are a bunch of really dedicated individuals."

GARDINER'S crew was outraced by six other schools participating in the Fourth Annual Northwest Invitational Rowing Regatta. The crew entered in the freshman/novice eight division along with the lightweight eight and open eight.

"We just were not prepared to race. Instead of practicing our racing, we've been working on technique," said Gardiner. "We weren't physically or mentally geared to this race. We cannot blame it on the rain and rough water, we've used those

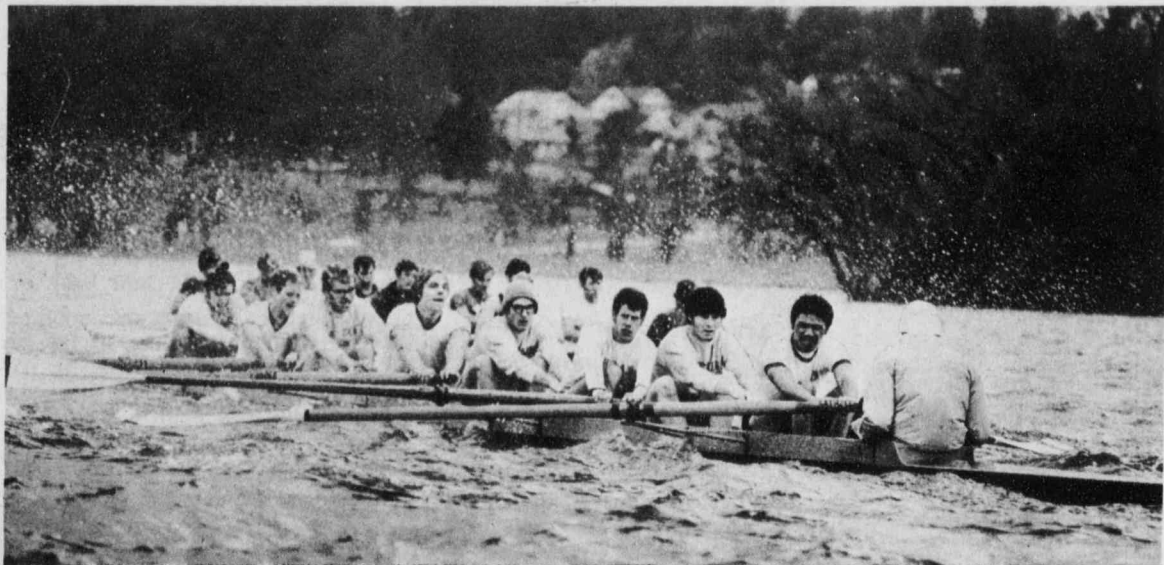
excuses for too long," he emphasized.

Sunday was at least a memorable moment for one crew member. Alice McLaughlin raced her first race. A female? Yup, a female! Alice, a sophomore, started turning out with the team after the first two weeks of practice.

"THEY NEEDED somebody to be a coxswain. Since I have been a supporter of the crew, they asked me," and Alice just couldn't resist.

Coach Gardiner stressed that the team has room for twelve more rowers. "I've walked up and down your campus several times. I've seen several guys that are big."

Any male (or I guess female), interested in turning out for crew is urged to come down to the boathouse at the foot of Madison, or call Bob Pigott, ME 2-2979.



STROKING FOR HOME: Members of S.U.'s open eight crew team manned the oars in the choppy waters of Green Lake during

Sunday's Fourth Annual Northwest Invitational Rowing Regatta. —photo by bob kegel

Campus Coeds Crush Competition, Create Chaos in Powder Puff Play

by Sue Hill
Sports Editor

If you think the express lane on Interstate 5 is busy during the rush hour, you should have seen the running expressions of Wednesday's Powder Puff football games.

Every 30 seconds 22 girls were surging forward, arms clasped together, shoving, pushing and running. When someone eventually got free, you'd hear a bellow, "Here, Ann, I'm open!"

The girls took the games seriously. Many of the teams had practiced weeks before the opening kick-off. Each was hoping to defeat last year's champion, the Steamrollers.

KJR DISC-JOCKEYS Gary Shannon and Norm Gregory walked into the Astro-Turf and were "surprised" as to how many girls showed up. "We thought it was very interesting. We sure hope we get invited

Intramural Schedule

Those teams competing in Wednesday's intramural volleyball are:

3:00 Forum vs. Poi Pounders
3:00 A Phi O vs. Surprise
4:00 Menehunes vs. Waterdogs
4:00 Embers vs. Pluth
5:00 I.K.'s vs. Waterdogs

back for the finals!"

The Spuds and The Kids were the first two teams to encounter combat. The first score came when the defensive team for the Spuds pinned The Kids on their one yard line. The center snapped the ball over quarterback Ellen Messenger's head. The Spuds plowed forward unhesitatingly and recovered the ball.

At the end of time, the score was 2-2. But the Spuds, coached by Joe Merlino, had two more first downs than Max Norgart's Kids, resulting in a victory for the Spuds.

The second floor Mudflats and Seventh Floor team from Bellarmine battled next. In the second quarter Janet Curan cocked her arm back in Sixkiller fashion and flung the ball five yards to Lenor Ingram for the first touchdown of the day.

Seventh Floor tried to make a comeback after Peggy McLean snapped in a 15-yd. pass from teammate Janet Curan. But nothing materialized.

The third floor Pigskins and I Ka Giva Damma's took the turf next. A romp-stomping run by Diane Rottering posted the only digits on the scoreboard.

The Steamrollers, coached by Bryce McWalter, strolled by Rusty Surrige's Forward Thrust battalion 7-0.

On the 10 yd. line, the Steamrollers lined up in a V formation. The center hiked the ball to quarterback JoAnne Carbonetti and everyone surged forward. The offensive line mowed over everyone, enabling JoAnne to score. Minutes later JoAnne hurled a pass to Nancy DeFuria for the one point conversion. I asked JoAnne what the play was called. She answered, "The Steamroller—what else?"

The game between the Spurs and the Spuds was the last mustering of offensive and defensive for the day. The Spuds triumphed 6-0.

QUARTERBACK Romey DeFuria of the Spurs sustained a couple of assaults, but Spuds defensive woman, mow-um-over Talevich (Becky) took heed and stopped them.

The Spurs were coached by Steve Pascoe.

Reporting the game for Channel 7, Colleen Patrick remarked, "It was fantastic! There was fine coordination out there, but I wish more people would play up activities like this more frequently. People just don't realize how entertaining it can be."

NORM GREGORY, KJR, commented, "Since there's no other football action at S.U., I guess that's where it's at!"

Miller Outlines Tactics Used in Pressure Ball

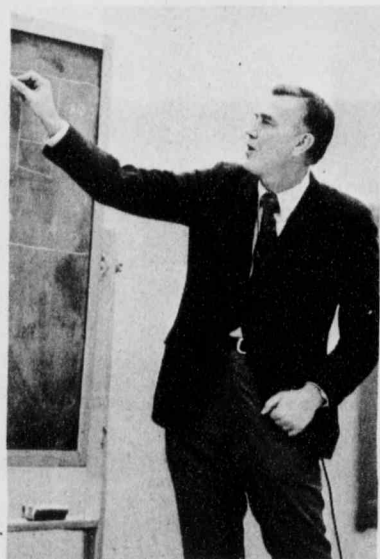
"Wear down the opponents of offense and defense both mentally and physically are the tactics we use in our pressured maneuvers," remarked Ralph Miller, head basketball coach at Oregon State University.

Miller was the guest speaker for S.U.'s annual basketball clinic last Saturday. Other personalities included Les Habegger, head coach of Seattle Pacific College, and the Chieftains head coach "Bucky" Buckwalter.

THE OSU MENTOR has figured out mathematically that 25% of a basketball game is taken up by rest. Miller's strategy is to eliminate that time. By calling few time outs as well as throwing accurate passes, he feels he can cut down much of that figure.

And Miller obviously knows what he is talking about as his team won the conference title last year.

Admitting it takes a lot of patience to teach the kids this type of ball, Miller remarked, "Just buy yourself some aspirin and a bottle of Cutty Sark, and sit and suffer."



RALPH MILLER

An example Miller used to explain his effectiveness in this form of play, he recalled, "Once we were behind by five points with only 23 seconds left to play. We won by three points, and stalled for ten seconds. That's eight points in thirteen seconds!"

MILLER was preceded by Les Habegger. Habegger discussed the modern approach to coaching today's athletes.

Chieftain coach "Bucky" Buckwalter spoke next. He commented on the development of the post man, explaining the techniques used in trying to get the ball into the pivot man.

A freshman scrimmage was utilized to show the more than 200 people in the audience, the usual tactics previously explained by Buckwalter.

A Phi O's Plan Anti-Grime Wash

Alpha Phi Omega, men's service fraternity, is sponsoring a car wash tomorrow from 11 a.m. to 4 p.m. on the mall between Bellarmine Hall and the Library.

The price of the wash is 10c and a free "5th" will be given to every 75th car.

Chuck Slowe is car wash chairman.



It's the real thing. **Coke.**

Real life calls for real taste.
For the taste of your life—Coca-Cola.

*Coca-Cola and "Coke" are registered trade-marks which identify the same product of The Coca-Cola Company.
Bottled under the authority of The Coca-Cola Company by: Pacific Coca-Cola Bottling Company
Bellevue-Seattle, Washington

TRANSCENDENTAL MEDITATION

(as taught by Maharishi Mahesh Yogi)

Transcendental meditation is a natural spontaneous technique which allows each individual to expand his mind and improve his life.

Introductory Lecture: Wednesday, Nov. 18

Norway Center—8 p.m.

Student International Meditation Society

P.O. Box 253, University Station

Seattle 98105 634-1594

Spectrum of Events November 17-18

TODAY

I.K.: 7 p.m. meeting in Xavier meeting room. Wear blazers.

I. K. Little Sisters: 7 p.m. meeting in the Chieftain conference room.

International Club: 8 p.m. meeting in LL 304.

A Phi O: 6 p.m. executive board, 7 p.m. active meeting in the Bellarmine Apts. basement. Wear blazers.

Alpha Kappa Psi: 7 p.m.

pledge meeting and 7:30 p.m. active meeting in Xavier conference room.

Spurs: 6:15 p.m. meeting in the Chieftain lounge.

Homecoming Cultural Day: 2 p.m. meeting in the Chieftain conference room.

TOMORROW

Hawaiian Club: 6:30 p.m. meeting in Ba 501.

Spurs: 9 p.m. hot dog sale in

Campion lobby and Bellarmine Hall.

Radio Club: noon meeting in Ba 205 for election of officers. New members welcome.

Mu Sigma: 3 p.m. important organizational meeting in the Mu Sigma office, Buhr Hall.

Electrical Engineers: noon organizational meeting in Ba 201 for students interested in recruiting new engineering students for next year.

Pre-Law Students to Meet For Test Explanation

Pre-law students are invited to a meeting tomorrow night at 7 p.m. in the Chieftain lounge.

The Law School Admission Test, to be given Dec. 19, will be explained by four students who have previously taken the test. Applications for the exam will be available at the meeting. The filing deadline for the exam is Nov. 25.

James McGuire, pre-law director, will discuss application techniques. Other topics for discussion will include the significance of LSAT scores, grades,

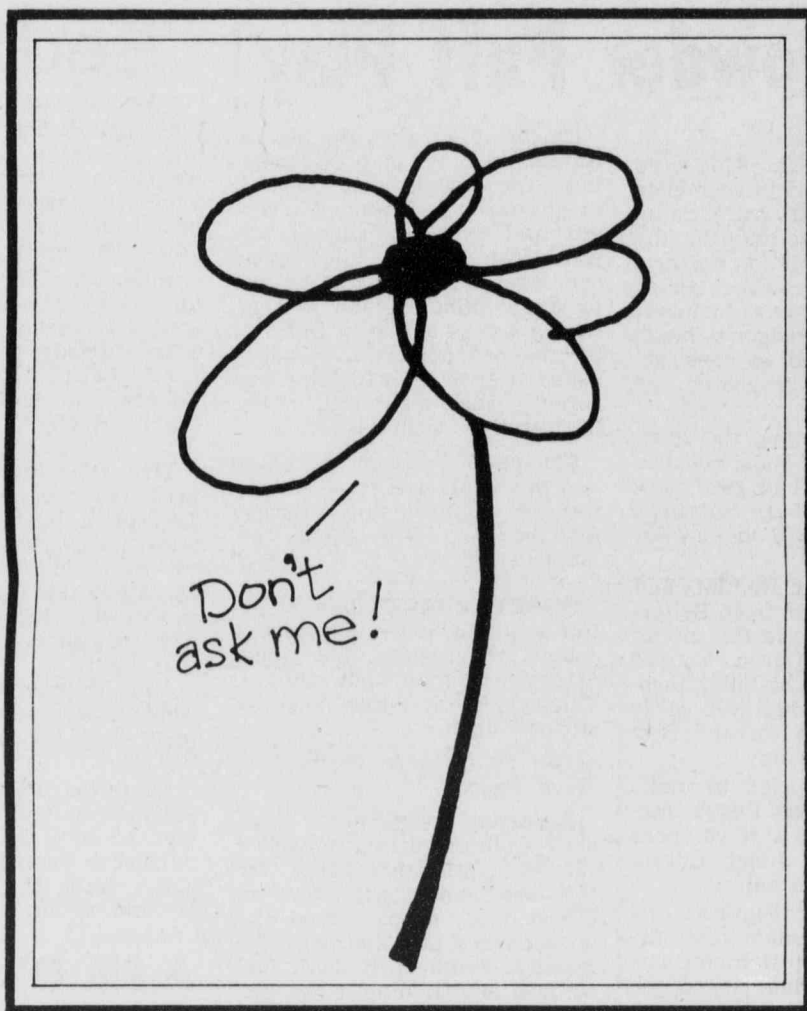
activities and references.

All interested students are invited to the meeting. Coffee and refreshments will be served.

Robert Vogel will give a speech on "Search for Peace in the Middle East" 10 a.m. Thursday in the Library Auditorium. He is with the American Friends Service Committee.

The talk is being sponsored by the S.U. Political Union.

Who won Michael's poster contest?



Gallery Night, Nov. 18, tells all.

Gallery Night at Michael's is our special way of saying thank you to all who entered our very ecological poster contest.

And to especially congratulate our winners.

We extend an open invitation for all to view the entries on November 18 at 7:00 pm.

It will also be a perfect opportunity for you to browse around our store with a mind to Christmas giving. Especially since we have such an extensive inventory of wondrous things for the budding artist, architect, craftsman or engineer.

So be our guest and tipple a toast or two to the winners with our most excellent free refreshments.

Michael's

Art, Craft, Drafting Supplies

4209-11 University Way N.E., Seattle, Wash. 98105
(206) 632-1166

We have a way of fulfilling your needs.