

9-29-1970

Spectator 1970-09-29

Editors of The Spectator

Follow this and additional works at: <http://scholarworks.seattleu.edu/spectator>

Recommended Citation

Editors of The Spectator, "Spectator 1970-09-29" (1970). *The Spectator*. 1222.
<http://scholarworks.seattleu.edu/spectator/1222>

This Newspaper is brought to you for free and open access by ScholarWorks @ SeattleU. It has been accepted for inclusion in The Spectator by an authorized administrator of ScholarWorks @ SeattleU.

Education, Activity Top ASSU Goals

by Kathy McCarthy
Managing Editor

A happy student is a potential recruiter and S.U.'s 1970-71 student body officers hope to provide activities diverse and significant enough to encourage present students to tell their friends.

Doug McKnight, ASSU president, would like this office to promote both "social activities and an intellectual atmosphere" which would bring additional students to the University.

A teacher evaluation system which would be "valid to both students and teachers" is number one on his priorities. This proposal is included in the as-yet-unproved Student Bill of Rights.

Smaller, three or four hour editions of last spring's University Critique Day are scheduled for October and November, he added.

An expanded election year speaker program will be handled through the Political Union's Modern America Lecture Series.

A low-cost life insurance option will be available to S.U. students this year in a cooperative plan with the University of Washington and surrounding community colleges. The lowered rates on the \$10,000 plan were previously open only to U.W. students. Brochures detailing the plan will be mailed soon, according to McKnight.

Rick Silverman, ASUW president, charged in a recent national television interview with U.S. Vice President Spiro T. Agnew that Agnew was "the greatest precursor of violence in the country" and "a political joke."

McKNIGHT FEELS that both Silverman's remark and the vice-president's retort were "simplified answers to more complex questions. Both are generalities. You don't put the whole blame (for violence) on anyone's shoulders."

Asked if he thought ASSU represents the University's students, McKnight replied, "We may not represent the most vocal, but we represent the majority and would like to serve all different opinions."

John McLean, senior history major, was appointed first vice president last spring to fill the post vacated by John Graves.

He hopes that directing student government "to more vital fundamental concerns of the students" (e.g. core curriculum, this fall's new pass/fail option) will ease the polarization of students, faculty and administration.

FINISHING the task of placing students on all University committees and encouraging communication between these students and the ASSU should

alleviate the "exaggerated malice of the Administration," McLean feels.

Block ticket buying and low-admission on-campus films are planned by Joe Zavaglia, second vice president.

"Bullitt" and "Lord Jim" will be the first double feature Nov. 1 in Pigott Auditorium. Price is \$1. "The Thomas Crown Affair" and "The April Fools" will follow on Nov. 22.

"IT'S DIFFICULT to reach all students due to political and cultural differences," admitted Zavaglia.

"We'd like to see all factions put on their own thing to further understanding rather than have ASSU organize something they don't understand. We would help them with organization and finances."

The best path to campus unity is "having a good time together," he added.

Decisions on club budgets are occupying Jim Eeckhoudt, treasurer. A target date of Oct. 17 has been set for completion of a budget proposal to present to the student senate. Budgets were not approved last year until late January. Club interviews begin today.

EECKHOUDT FORESEES roughly the same operating funds for ASSU this year as last since allotments from student fees depend on enrollment. His job is "getting ASSU on its feet financially so we'll be able to do the things we set out to do" without the "real scare" of losing large amounts of money on such activities as Homecoming.

George Irwin, publicity director, expects this year's block ticket buying to center around hard rock "since that seems to be what has the biggest saleability."

IRWIN REPORTS that Spirits, S.U.'s pep club, is already organized under president Paul Novak and will be providing buses to soccer games. Spirits, "a parties and good times group," is open to all.

Shirley, Miles, secretary, summed up the ASSU officers' hopes for the year: "I'd just like to see everyone cooperate and listen to each other. We lacked that last year."

local businesses suggesting that they use students for part-time employment and make use of the office's job board directory. Response to this project has been successful, but student supply still exceeds job demand.

SENIORS SEEKING jobs following graduation are also finding the employment picture grim. According to Col. Michael Dolan, Director of Placement, campus recruiting is down 50% from last year. His office is now preparing a list of companies who will visit campus for job interviews and this schedule along with instructions on how to sign up for interviews will be mailed to seniors by October 15.

Citing economic conditions locally, Col. Dolan recommends sending resumes outside the state and be prepared to go where the opportunities are.



SEATTLE Spectator UNIVERSITY

Vol. XXXIX, No. 2



Seattle, Washington

Tuesday, September 29, 1970

McLEAN:

Student committeemen could ease "exaggerated malice." Polarization can be checked.



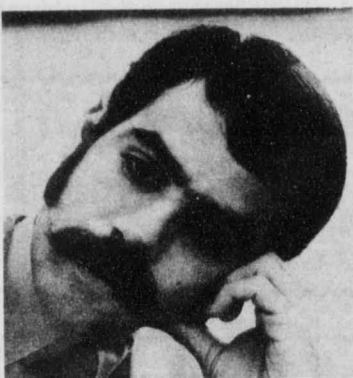
EECKHOUDT:

Budget due early this year. "Real scare" of losing big money still looms.



McKNIGHT:

"... we represent the majority and would like to serve all different opinions." Teacher evaluation: a reality at last?



ZAVAGLIA:

"... like to see all factions put on their own thing to further understanding..."

IRWIN:

Hard rock, Spirits will prevail. "If you're not part of the solution..."



MILES:

"... like to see everyone cooperate and listen..."



Job Hunting Students Find Market Scarce

The pinch of a shrinking job market is being felt at S.U. as more students are finding it difficult to locate part-time employment.

The Student Placement office had long lines last week of students seeking prospective employment. Most found that the jobs are fewer and filled faster than ever before.

STUDENT EMPLOYMENT has been affected by the closing down of SAGA food service in Campion. SAGA normally employs 115 students and this year has about 100 in Bellarmine and the Chieftain.

Another chief means of campus employment — student help in the various schools and departments of the university — has been reduced as departments are hiring fewer students.

The Student Placement office mails 1,000 letters quarterly to

— photos by bob kegel

gallery:
the
select
six

New Faces, Promoted Veterans Fill Staff

Some new faces mixed with familiar faces in different posts compose the S.U. faculty for the coming school year.

In the new administrative positions are Fr. Louis Gaffney, S.J., academic vice president; Fr. Timothy Cronin, S.J., vice president for students; Fr. James Cowgill, S.J., dean of the Graduate School and director of research and institutional development; Fr. Robert Rebhahn, S.J., director of resident student services; Fr. Edward Favilla, S.J., assistant to vice president for university relations; and Anthony Ogilvie, assistant director of minority student affairs.

New faculty members in the College of Arts and Sciences are Virginia Clayton, assistant professor of home economics; Louis Kelly, assistant professor of music; Fr. Arthur McNeil, S.J., professor of chemistry; and Dr. Alan Troy, assistant professor of mathematics.

SERVING AS lecturers are Ann Birnbaum, languages; Hilda Bryant, journalism; Joseph Do-

brich, political science; Temple Jones, political science; Bruce McKim, journalism; William Simmons, English, and Evalyn Taylor, psychology.

Walter Barbee is a new assistant professor of education and Michael Acres will serve as graduate assistant coach in the P.E. department.

New to the School of Business are assistant professors Dr. Julian Andersen and Barbara Yates. Lloyd Heath will be a lecturer in business.

RETURNING AFTER leaves of absences to the School of Nursing are Dr. Dolly Ito and Phyllis Leonard, both associate professors of nursing.

Lt. Col. Leonard Kraft, assistant professor of military science, and S/Sgt. Michael Von Millanich, instructor in military science, are new additions to the faculty.

In the admissions office Gerald Evich, Fr. Edward Favilla, S.J., and William Ording have been named assistant directors of admissions with Paul Seely acting as admissions counselor.

A new assistant chaplain this year is Fr. Eugene Delmore, S.J.,

The Community Service program has a new assistant director, D. Richard Greene.

In departmental changes, Dr. Glenn Olsen, associate professor of history, succeeds Dr. James Tallarico as director of the Honors Program.

JOHN ESHELMAN, assistant professor of economics, will serve as economic department chairman while Dr. Margaret Mary Davies is on leave.

Dr. Martin Larrey, associate professor of history, will be acting chairman of the history department during the leave of absence of Fr. Gerard Steckler, S.J.

In addition to Dr. Davies and Fr. Steckler, leaves of absence have been granted to Dr. Hayden Mees, associate professor of psychology, Fr. Ernest Bertin, S.J., chemistry professor, and Fr. John Fearon, O.P., theology associate professor.

Also granted one year sabbaticals are Fr. Engelbert Axer, S.J., associate professor of philosophy; Fr. Leonard Kaufer, S.J., associate professor of philosophy; and Fr. Cornelius O'Leary, S.J., associate professor of theology.

GIVEN ONE QUARTER leaves of absences during the following year are Fr. Frank Costello, S.J., associate professor of political science; Robert Harmon,

associate professor of history; John Talevich, journalism associate professor; Fr. Kevin Waters, S.J., assistant professor of music; and Robert Viggers, mechanical engineering professor.

Leaves of absence for the following have been extended: Fr. James Connors, S.J., assistant professor of drama; Sr. Rosemarie McCartin, FCSP, associate professor of psychology; Sr. Catherine Patch, O.P., theology assistant professor; and Fr. Michael Taylor, S.J., associate professor of theology.

Thirteen promotions for returning faculty members have also been approved by the President and Board of Trustees.

ASSUMING THE RANK of professor is Fr. James Reichmann, S.J., philosophy. Moving up to associate professor are Norma Bushman, nursing; Dr. Hildegard Hendrickson, economics and finance; Kenneth MacLean, English; Phyllis Leonard, nursing; Fr. James Powers, S.J., English; and Dr. Jerry Riehl, physics.

Other associate professors are Fr. Robert Saenz, S.J., modern languages; Dr. Robert Saltvig, history; Fr. Louis Sauvain, S.J., theology; Dr. Harriet Stephenson, management; and Charles Yackulic, education.

New assistant professor is Patrick Burke, philosophy.

Mysterious Death Robs Spec Of Executive Catnip Editor

Tabetha Cat, 2, Spectator mascot, was found dead last week in a planter near the Spectator-Aegis building.

Cause of death was unknown. A campus resident for the past year, the grey, white and gold cat was abandoned near Bellarmine last fall where soft-hearted Spectator staffers rescued her from a trip to the Humane Society.

Great Cat Hunts, lasting for hours in the chill, fall twilight, encouraged Tabetha to keep her curfew for her first few weeks at the Spec. Tactical search squads of ten to 20 erstwhile student journalists roamed the campus, climbing trees, calling discreetly and surprising strolling Jesuits in Loyola garden.

Eight kittens and 12 months later, Tabetha ruled the Spec with an iron hand, wandering at will into first floor journalism classes and curling up in files and copy boxes when the news was slow.

Survivors include the present



—photo by mike penney
TABETHA

Spectator staff and former editors Patty Hollinger and Kerry Webster.

Private funeral was last week on campus.

Tacky Cocoons:

Butterfly's Flight Not Flawless

by Don Nelson

Opera fans will not be totally pleased with the Seattle Opera Association's production of Puccini's "Madama Butterfly." And opera novices like myself will not be immediately captivated by this unique dramatic form, even though "Butterfly" has been described as one of the more palatable operas.

The music and its performance cannot be faulted. Puccini's score is sometimes amusing, sometimes moving, and continuously interesting. Marcella Reale, singing the role of Madama Butterfly for the 200th time on opening night, did an outstanding job of conveying the pride and passion of Cio Cio San.

THE SUPPORTING cast were excellent musically and dramatically, especially Gerald Thorsen as Goro and Marlena Kleinman as Suzuki. Thorsen made his character very enjoyable (although he was the "villain") through scene-stealing animation. Chris Trembanis was a sympathetic Sharpless, while Archie Drake was impressive in his short but action-filled scenes as the Bonze and as Prince Yamadori.

The dramatic weak spot, unfortunately, was Flaviano Labo, who sung the lead male role of Lt. B. F. Pinkerton. While Flaviano has a strong, excellent voice and had command of the music and libretto, his dramatic talent is just about nil. He was

not the dashing, carefree character Pinkerton should be.

The production's most glaring weakness is the ineffectiveness of the locally constructed sets. The sets for the first act looked amateurish and somewhat cluttering. The settings for the last two acts were no better, giving the production an undesired high-schoolish effect. A lack of color, in both the settings and the costumes, detracted from the pageantry usually associated with the Orient.

THE CHARACTERISTIC most likely to disinterest the first time opera goer is the comparative inaction on stage. The entire libretto could probably be read in 20 minutes, but it takes considerably longer than that to sing it.

"Madama Butterfly" is scheduled for three more performances in the Opera House tomorrow, Friday, and Saturday nights at 8 p.m. The Friday night performance is in English.

New SUn Also Rises

S.U. alumni are now in the process of producing an all new quarterly newspaper-magazine for some 22,000 S.U. alumni, parents, faculty and other friends of the University.

SUn (Seattle University News), which succeeds two former University publications, SU News and SU Magazine, will be in the mail the first week of October. Following editions are scheduled for January, April and July.

SUn's staff include Frederic A. Cordova, editor; Jean Mer-

lino, associate editor; and Rev. Edward Favilla, S.J., business manager. The alumni communications committee is also a part of the editorial board.

SU communications alumni are the writer-contributors.

CLASSIFIED ADS BRING RESULTS!

Classified Ads

CLASSIFIED ADS:
6c Per Word
DISPLAY ADS:
\$1.70 Per Column Inch
Discounts Available
SPECTATOR Advertising
EA 3-9400, ext. 596

Apts. for Rent

ROOM and Board, \$75 month, meals three times a day, seven days a week, contact Mrs. Agnes Goodie, EA 2-3961.

FURN. Apt., modern brick bldg., one bdrm. or studio. Hardwood floors, tile kitchen and bath. Heat and hot water. \$75-\$85. EA 5-8642.

IDEAL for students: Lovely apartments, 5 minutes from S.U., 1, 2, or 3-bdrm. with spectacular view, parking, on bus line, carpeted, from \$125. Call MU 2-9800, Mr. Salant or LA 4-1267 evenings.

SPACIOUS one bedroom furnished or unfurnished, \$100 and up; EA 2-5487 or PA 3-0685.

Help Wanted

APARTMENT manager needed, call EA 2-5487 or PA 3-0685.

MARRIED couple share home with widow, 2 blocks from S.U., \$90 a month. Day, EA 5-0407 and night, EA 5-6953.

MARRIED couple without children wanted to manage 11 unit apt. bldg. Call AT 3-1400.

HELP! Wanted TOY TRAINS any make, age or condition. Give details. A. M. Cox, LI 6-2230.

Personals

CATHOLICS in favor of Abortion Reform please call M. Donohue, MA 3-5315.

For Sale

\$10,000 low cost life insurance (group), \$18 a year up to 20 and \$21 a year for ages 20-29. No exclusion and no war clause. Call ME 2-2979 Bob Pigott.

The Spectator

Published Tuesdays and Thursdays during the school year except on holidays and during examinations by Seattle University. Edited by S.U. students with editorial and business offices at 825 Tenth Ave., Seattle, Wash. 98122. Second-class postage paid at Seattle, Wash. Subscription: \$4.50 a year; close relatives, alumni \$3.50; Canada, Mexico \$4.00; Other foreign addresses \$6.25; airmail in U.S. \$9.00.

Editor: Don Nelson
Managing Editor: Kathy McCarthy
Associate Editor: Art Reis
News Editor: Marsha Green
Asst. News Editor: Sr. Dolores Schafer

THE HARVARD EXIT

807 E ROY on capital hill EA3-4647

International Directors Series
Wednesday and Thursday

Joseph von Sternberg's
"THE BLUE ANGEL"
at 7 and 9:30

plus selected shorts by Seattle film makers and
"Captain Marvel" Ch. 5

Here is von Sternberg's legendary film that launched the career of Marlene Dietrich. Among film historians, it is acclaimed as a work of screen art, among psychologists as a classic study of sado-masochism. Von Sternberg had been working in Hollywood for more than fifteen years before he went to Germany, at Emil Jannings' request, to direct this crucial film—the first sound film for both Jannings and von Sternberg. With it they set in motion the Dietrich myth that was eventually to surpass their fame.

Friday and Saturday

Ingmar Bergman's
"THE VIRGIN SPRING"

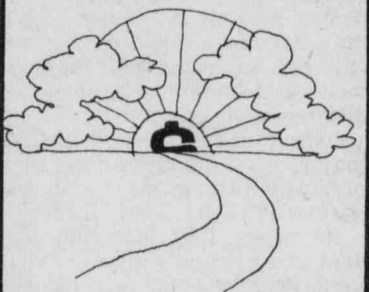
plus selected shorts by Seattle film makers and
"Captain Marvel" Ch. 6

Sunday thru Tuesday

Serge Eisenstein's
"IVAN THE TERRIBLE"
(Parts I and II)

THE HARVARD EXIT

807 E ROY on capital hill EA3-4647



This is the dawning of the Age of Security.

Today's college student is on to the future. He understands the importance of having financial security. And he'll start to plan for it now. By investing in a life insurance program that provides for now, and the future.

At Provident Mutual we have the precise program for college students. The earlier you start, the less it costs. And the more security you'll have a chance to build.

Give us a call. Or stop by our campus office. Make this the dawning of your Age of Security.

Bob Pigott
ME 2-2979

PROVIDENT
MUTUAL LIFE
INSURANCE COMPANY OF PHILADELPHIA

The fall quarter mass and confessional schedule, as announced by Fr. Joseph Maguire, S.J., chaplain:

MASSES: Weekdays, Liberal Arts Chapel, 6:30 a.m.; Bellarmine chapel, 7 a.m., 11:10 a.m., 12:10 p.m. and 4:30 p.m.; Campion chapel, 5 p.m.; New Liturgical Center (3rd floor of L.A. building), 12:10 p.m. Saturdays, and holidays, Campion chapel, 11:30 a.m.; Bellarmine chapel, 10 a.m. Sundays, Campion chapel, 12:30 a.m., 7:30 a.m., 11 a.m., 4:30 p.m., and 7:30 p.m.

CONFESSIONS: Weekdays, Liberal Arts chapel, 9 a.m., 10 a.m., and 11 a.m.; Bellarmine chapel, 4:10 p.m.; Campion chapel, 4:40 p.m., 7 p.m.

Page Two/Tuesday, September 29, 1970/The Spectator



SKI SALE

SATURDAY, OCT. 3
9:00 AM TO 5:30 PM

★ SKIS & SKI SETS ★

• **200 PR. METAL & GLASS DEMOS**
HEAD • K 2 • KNEISSL • HART
NEW VALUES TO \$200..... FROM **\$29⁹⁵**

• **STEP-IN BINDING SKI SET**
RELEASE STEP-IN TOE & HEEL
WITH A&T WOOD SKIS
\$44 VALUE ONLY **\$19⁹⁵**

• **STEP-IN SKI SET & BUCKLE BOOT**
5 BUCKLE RUBBER BOOT
WITH ABOVE SKI SET
\$69 VALUE ONLY **\$27⁹⁵**

• **ARROWGLASS-USA**
GLASS WRAPPED-RED TOP
REGULAR FULL WARRANTY **\$69⁹⁵**
\$115 WARRANTY

★ SKI BOOTS ★

• **RAICHLER FIBER JET 1969-70 Model**
RED, BLUE OR BLACK BOOT
\$135 REGULAR ONLY **\$85⁰⁰**

• **GLACIER 5-BUCKLE RUBBER**
REGULAR NOW ONLY **\$9⁹⁵**
\$25 ONLY

• **350 PR. BUCKLE & LACE BOOTS**
VALUES TO NOW **\$14⁹⁵**
\$85 FROM

★ SKI WEAR ★

• **SLOPE STAR SKI PANTS**
51% WOOL, 49% NYLON
\$15 REGULAR NOW ONLY **\$8⁹⁵**

• **OVER-THE-BOOT WESTERNER SKI PANTS**
60% WOOL, 35% NYLON, 5% SPANDEX
NEW 1971 FLARED STYLE
STITCHED WAISTBAND..... ONLY **\$24⁹⁵**

• **NYLON WIND SHELLS**
LARGE COLOR SELECTION
\$12 VALUE ONLY **\$6⁹⁵**

• **NAME BRAND**
PARKAS-PANTS
SHIRTS-SWEATERS UP TO **50% OFF**

★ **1970-71 SKIS & SKI WEAR** ★
NOW IN STOCK

WE HONOR ALL BANK CARDS
FREE PARKING



**RECREATIONAL
EQUIPMENT INC.**

1525 11th AVENUE
BROADWAY DISTRICT AT E. PINE ST.
EA 9-6060

S.U. Oarsmen to Hit Water Soon

The 4:30 a.m. rowers are at it again. For those wanting to fill the empty seats there will be an orientation meeting tomorrow night at 7:30 p.m. in the Campion Tower weight lifting room.

Coach Jim Gardner, a former Olympic champion and coach has again arranged for the crew to race against well known institutions such as U.C.L.A., U. of W. and O.S.U. This will be the crew's sixth consecutive year of participation in this oldest competitive sport.

When most of us are soundly asleep dreaming our most outer thoughts, the crew team has risen and already started stroking. They begin practice around 4:30 a.m. and do not end until 8:00 a.m. They practice for a est competitive sport.



CREW MEMBERS BARRY LEAHY AND GEORGE MONOSTORY
—photo by sue hill

Soccer Play Starts; U.P.S. Slated First

Two within-driving-distance games with the arch-rival UW Huskies will highlight the Chiefs' 1970 soccer schedule. The action begins October 10 with an afternoon game at the University of Puget Sound.

Half of the ten scheduled games are on S.U.'s "home" field, Lower Woodland playground. Games at Husky Stadium and at SPC's Interbay field give Chieftain rooters a total of seven chances to see the booters without ever leaving the city limits.

The slate also includes trips to Burnaby, B.C., and Bellingham.

Letterman Joe Zavaglia looks for increased spectator enthusiasm this year.

"We had a small demonstration game for the freshmen in the AstroGym last week," said Zavaglia. "The response was great. They really loved it."

Zavaglia added that it may be possible to arrange for free bus transportation to the UW game in the stadium.

The team turns out four nights a week, Monday through Thursday, from 7 to 9 p.m. in the AstroGym of the Connolly P.E. Center.

1970 SOCCER SCHEDULE

OCT. 10	S.U. at UPS (Tacoma)	2 p.m.
14	SPC at S.U. (Lower Woodland)	7 p.m.
17	S.U. at BCIT (Burnaby, B.C.)	2 p.m.
20	Western Wash. at S.U. (Lower Woodland)	1 p.m.
31	BCIT at S.U. (Lower Woodland)	1 p.m.
NOV. 3	S.U. at U.W. (Husky Stadium)	7 p.m.
8	S.U. at Western (Bellingham)	1 p.m.
14	S.U. at SPC (Interbay)	2 p.m.
18	UPS at S.U. (Lower Woodland)	7 p.m.
21	U.W. at S.U. (Lower Woodland)	7 p.m.

Welcome Back to Seattle U. and the Cellar-bration

★ Dancing

★ Fireside Chats

★ Food & Fun

Coming October 3rd

A Special Open House

for S.U. Students

Let us be your host

Cellar

between Madison & Union on 14th

—news— —briefs—

intramurals

Intramural enthusiasts! Teams are now beginning to form for football, volleyball and badminton. All team applications must be received by Bernie Simpson at the Connolly P.E. Center by October 2nd.

Football will commence Saturday, October 10th, while badminton and volleyball will debut Monday, October 12th.

Last year 16 football teams engaged in rigorous battles.

pre-med signups

Students interested in applying to dental or medical school in 1971-72 are asked to pick up recommendation forms and sign up for interviews, according to Dr. David Read.

Forms are available in Bannan 612.

The Committee on Predental and Premedical Education will conduct interviews on October 7.

lockers

Student lockers can still be rented for the quarter or the entire year, according to ASSU Treasurer Jim Eeckhoudt. The lockers will be rented each Monday afternoon from 2 p.m. to 4:30 p.m. in Eeckhoudt's office.

Rental rates are 75c per quarter or two dollars per school year.

mrs. logan dies

Mrs. Katherine Logan, mother of Fr. Frank Logan, S.J., S.U. assistant professor of modern languages, died recently in Seattle. Mrs. Logan was 93.

phone numbers

ASSU secretary Shirley Miles has requested that all current club officers leave their name, address, and phone number with her office. Shirley can be reached on extension 6815.

wall wizards

Six-wall wizards interested in representing S.U. in the Puget Sound Handball League are invited to a meeting in room 154 of the Connolly P.E. Center tomorrow at 3 p.m.

A six-man team will be selected, through match play, to represent the Chieftains when league play begins next week.

super band

Alpha Phi Omega is sponsoring a dance this Friday from 9 p.m. to midnight in the AstroGym. Music will be by the Superband.

The mod dance will feature strobe lighting and a black light poster room where refreshments will be served.

Tickets are \$1.25 stag and \$2 drag.

ASSU Fall Quarter Calendar

The fall quarter activities calendar, prepared by ASSU 2nd Vice President Joe Zavaglia, appears below in hopes that the apathetic majority will clip it for future reference. Varied events fill every week and weekend, through finals, so peruse and choose to your liking.

OCT. 2 A Phi O dance
8 I.K. movie and car wash
10 Weekend overniter, Camping in Nature Club
15 Business Woman of the Year Dinner

17 A Phi O all-school rally car and party
19 AWS Installation - Dinner
21 Ski Club fashion show
23 Intercollegiate Women Students convention (through 25th)
24 Camping in Nature Club party, U.N. Day
28 Spurs Caramel Apple sale
NOV. 1 ASSU movies, "Bullitt" and "Lord Jim"
6 A Phi O Las Vegas Night
7 Phi Chi Theta and Pi

Sigma Epsilon car wash
11 Admissions day, no classes
12 Activities Board meeting
13 Mu Sigma review
14 Phi Chi Theta and Pi Sigma Epsilon all school party
18 Spurs hot dog sale
19 Activities Board meeting
21 Senior class party
22 ASSU movies, "The Thomas Crown Affair" and "The April Fools"

26 Thanksgiving Holiday
DEC. 1 Spur-Frosh Get-Together
4 I.K. dance and picnic
8 Feast of the Immaculate Conception
8-11 Finals-week

Spectrum

TOMORROW
International Relations Club: meeting, 4 p.m. in Pigott 352. New members welcome.

FRIDAY
Rifle Club: meeting, 3 p.m. on Rifle Range. All persons interested in joining are invited.

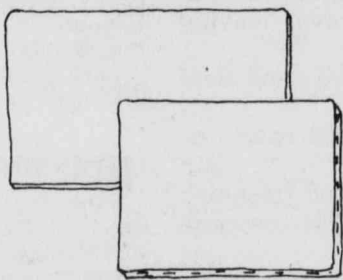
Booksale \$ Grab

Members of Alpha Phi Omega will be returning money to students who placed books to be sold with them from 10 a.m. until 4 p.m. through tomorrow or until the money runs out. The booksale is located in the basement of the Bellarmine Apartments.

Students must present a receipt in order to receive payment and receipts up to a year old will be honored.

Used books will continue to be on sale this week. Jerry Luna is booksale chairman.

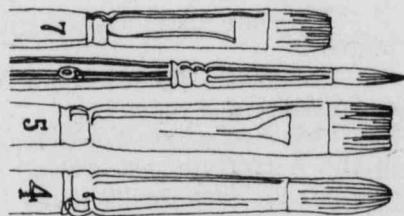
Yours for the asking. 20% off on back-to-school items.



COTTON CANVAS PANELS AND STRETCH CANVAS

High quality panel with perfect turned edges, or handmade cotton Duck on select kiln-dried pine stretcher strips. Excellent for any medium. All Sizes.

SAVE 20%



OIL COLOR AND WATER COLOR BRUSHES

These bristle or sable brushes are unexcelled for applying oils or water-colors. Whether you paint on canvas, wood, or on a friend.

All brushes.

SAVE 20%

LAGUNA EASEL

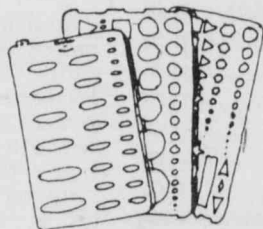
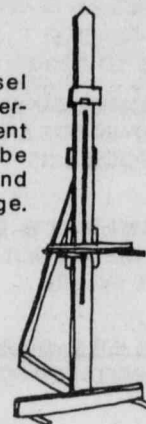
A sturdy studio easel with a metal ratchet, permitting easy adjustment to any height. Can be tilted to any angle. And folds flat for storage. Height 78", base 26".

Reg. \$24.50

Student price

\$19.60

SAVE 20%

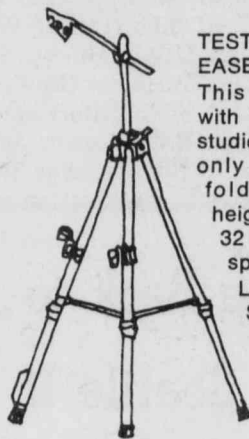


TIMELY, RAPIDESIGN & TIMESAVER TEMPLATES

With a template you can draw perfect circles, squares, triangles, ovals, ellipses, and many other shapes without losing your temper. And with our templates you'll save money as well as time and effort.

ALL BRANDS

SAVE 20%



TESTRITE STANDARD EASEL #100

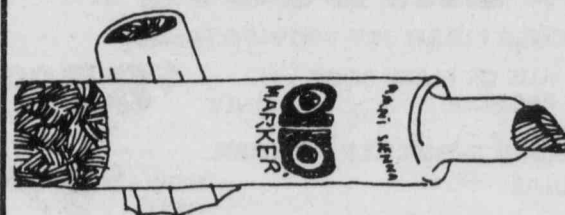
This sturdy deluxe model with "Autolock" is ideal for studio or outdoors. It weighs only 3 lbs., 8 ounces and folds from a maximum height of 6 ft. 9 in. to only 32 inches. It also has new spring canvas holders.

List \$16.45

Student price

\$13.16

SAVE 20%

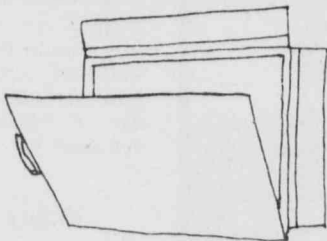


A & D DESIGN MARKERS

Design, create, experiment with color in the most versatile, easiest-to-use art medium available today. Studio Markers are water proof, leakproof, instant drying and smudge proof. Come in 100 vivid colors. And have replaceable tips.

List .89 Student price .72

SAVE 20%

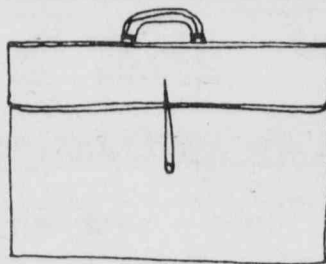


SKETCH BOARD PORTFOLIOS

A well made portfolio for carrying samples in complete protection. Heavy leatherette hinges and heavy braided ties strings. You'll present yourself well wherever you go with one of these.

All sizes with and without flaps

SAVE 20%



RED ROPE ENVELOPES

These large expanding envelopes are ideal for carrying material where an expensive case is not needed. Choose either the plain or the Deluxe with plastic handles and rubber band type holders.

All Sizes

SAVE 20%



PICKETT & POST SLIDE RULES

Make all your calculations faster and with greater accuracy on a Pickett or a Post slide rule. An indispensable tool for math, science, and engineering.

All types

SAVE 20%

Plus many, many more at even bigger savings. Now through November 2nd.

Just ask, and you shall receive.

MICHAEL'S ART, CRAFT, DRAFTING SUPPLIES

4209-11 University Way N.E., Seattle, Washington, 98105, (206) 632-1166

We have a way of fulfilling your needs.