

3-30-1962

Spectator 1962-03-30

Editors of The Spectator

Follow this and additional works at: <http://scholarworks.seattleu.edu/spectator>

Recommended Citation

Editors of The Spectator, "Spectator 1962-03-30" (1962). *The Spectator*. 751.
<http://scholarworks.seattleu.edu/spectator/751>

This Newspaper is brought to you for free and open access by ScholarWorks @ SeattleU. It has been accepted for inclusion in The Spectator by an authorized administrator of ScholarWorks @ SeattleU.



Spectator Photo by Jim Haley

AND LIT. 165: student registering for spring quarter receive class cards from members of the registrar's crew. An unofficial total of 2446 students had registered by Wednesday night. This compares to winter quarter's total of 2741 and fall's 2823.

California Convention:

Delegates to Study U.N. Policy, Crises

Ten S.U. students will travel to San Diego, Calif., to attend the West Coast convention of the Model United Nations, April 10 to 15. The convention will be on the San Diego State College campus.

The S.U. delegates attending are Mary Lou May, Bob Wedemeier, Tim Fitzgerald, Jim McBride, Jose Ricard, Mike James, Joan Berry, Jim Headley, Gerrard Chiffert and Tim Sullivan.

MARY LOU MAY, chairman, said that there are presently 930 delegates representing 90 schools on the West Coast registered for the convention.

The S.U. delegation will represent the country of Ghana in the mock security council and the general assembly.

In the first two days of the convention, each of the schools, representing 104 countries, will have delegates meeting in eight different committee sessions formulating resolutions on world problems.

SOME OF the points to be discussed are: U.N. forces in the Congo; population growth and economic development; granting independence to colonial countries; financing U.N. operations in the Congo; Red China's representation; Algeria; and nuclear weapon tests ban.

Each committee will pass resolutions and present them to the general assembly. In the final two days of the convention, delegates will debate the committees' recommendations. Delegates representing both the affirmative and negative side of a question will battle on the floor of the general assembly. The whole assembly will then vote on the issues.

THE PROPOSALS passed will be sent to the U.N.

Mary Lou said that the purpose of the convention is to acquaint students with the functions and structure of the U.N. and the international problems with which U.N. is dealing. She also said that they gain a greater understanding of the country they represent.

Spring Conference Scheduled

A spring leadership conference for S.U. students is being planned for April 28 at the Aqua Barn resort near Renton, said Mike Reynolds, chairman.

The purpose of the conference will be to synthesize and solidify the new and old ideas and programs that have been brought up.

THERE WILL be five major areas of discussion, Reynolds said. They are: senate representation; National Students Association affiliation; communications, which will include the student cooperation committee, the senate public relations committee and ASSU President-elect Jim Bradley's idea for a weekly newsletter; Frosh Orientation; and activi-

ties co-ordination, which will include discussion on revision of student activities, policies and procedures.

The method of choosing the delegates, Reynolds said, will be different than in the past. He said he has asked about 20 students "who are in a position to know" to submit a list of 10 people who have the capabilities of discussing, criticizing and formulating plans in the five areas.

"THERE WILL undoubtedly be duplications on the lists," Reynolds said. "We will probably end up with about 50 delegates plus the past and new ASSU officers and the leadership conference committee members.

Invitations will be mailed to the delegates in the near future, Reynolds said.

Press Workshop:

News Staff Swells to 93

Ninety-three high school students from 13 schools in Washington and Oregon have registered for the second Northwest Catholic High School Press Workshop, next Friday and Saturday, on campus, according to Jan Kelly, executive director.

The students will publish an 8-page tabloid newspaper, the Student Prints, in 24 hours. After a general briefing session in Bannan auditorium at 1:30 p.m., the actual production of the paper will begin at 2 p.m.

The schools that have registered are: Holy Rosary, Blanchet, Seattle Prep, and O'Dea, Seattle; Gonzaga Prep, Spokane; St. Leo's, Tacoma; St. Joseph's and Central Catholic, Yakima.

St. Mary's, Winlock; St. Boniface, Sublimity, Ore.; Mt. Angel, Ore.; Serra Catholic, Salem, Ore.; and Jesuit High, Portland.

'Martin Luther' Film On Campus Sunday

The Young Christian Students (Y.C.S.) on campus, under Barry Wilcox, group leader, in conjunction with the theology and history departments, is sponsoring the controversial film, "Martin Luther," at 7:30 p.m., Sunday, in Pigott auditorium.

The film, which was released in 1953, received a separate classification from the Legion of Decency: "Recommended for viewing by only the well-informed Catholic because of certain historical errors or distortions."

IN ACCORDANCE with this recommendation, Fr. Webster

T. Patterson, S.J., representing the theology department, and either Mr. Charles R. Harmon or Dr. Thomas E. Downey, representing the history department, will introduce the film. There will be an open discussion period following the film.

FATHER SAID that since this will be the only opportunity for many Catholics to view the film within the safeguards of the Legion of Decency rating and recommendation, the students may invite their parents, friends and other interested people. All will be admitted to the film at the regular students' admission price of 35 cents.

U.W. Professor To Speak Tuesday

"The Existentialism of Kierkegaard" will be the topic of a lecture presented by the S.U. cultural committee at 7:30 p.m., Tuesday, in the Bannan auditorium.

Dr. Paul Dietrichson of the U.W. philosophy department will give the free lecture. Dr. Dietrichson has done extensive study on existentialism.

There will be a question period following the lecture.

Czech Film To Run Here

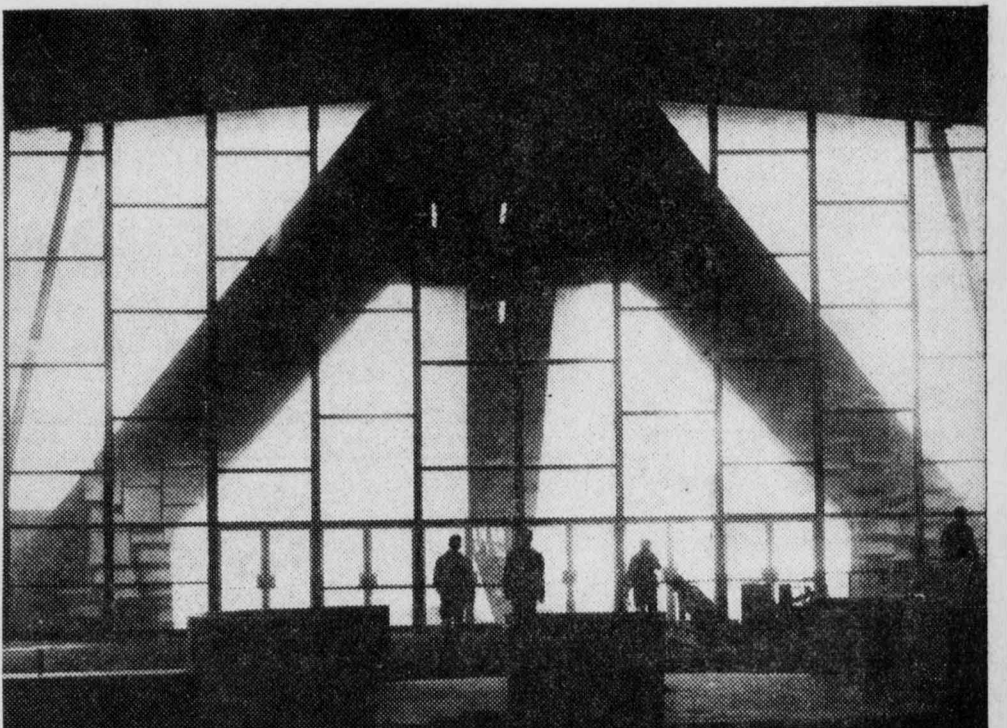
Film highlights of life in the Soviet satellite country of Czechoslovakia will be presented at 8 p.m., Sunday, April 8, in Pigott Aud. The movie is being presented by the ASSU cultural committee.

THE ALL-color film titled "Czechoslovakia — Torn Between Two Worlds" is an uncensored, comprehensive report filmed in the Iron Curtain country by nationally known lecturers Mrs. Bettina Shaw and her husband.

Mrs. Shaw will narrate and answer questions concerning the film.



OUT OF PLACE stands a statue of a World War I Doughboy in the midst of the 21st century surroundings of the World's Fair. In the background is part of a science exhibit which will produce solar energy.



C-21 WORKERS inside the Coliseum are silhouetted against the huge sections of windows. Reflected on the supporting arches on the left and right is part of the cloud chamber.

Spectator Photos by Jim Haley

Editorial

One-Hour Wonder

Those who by chance took The Spectator's recent jest on registration seriously were probably overjoyed to see the speed and facility with which the once lengthy process was handled.

Most students found that they had no use for folding chairs, thermoses, tranquilizers, or novels to aid in the usual registration "wait." Students would have been wiser to take roller skates for scooting through the formalities.

REGISTRATION went so smoothly and quickly that most students were finished in about an hour, somewhat different from the three or four hours it took in past years.

The efficient registration crew is to be commended for its almost flawless agility.

The only criticism that has been aired concerning registration is that some freshmen could not find open classes in required areas. Towards the end of registration there just didn't seem to be enough sections in some courses, especially in the lower division liberal arts areas.

OF COURSE, the problem of providing more classes is a difficult one to cope with, and we sympathize with the administration. The lack of teachers or the unexpected migration of upper classmen into lower division courses cannot easily be dealt with.

On the other hand, it is discouraging for students to be left with such a narrow choice of subjects so as to be forced to take upper division courses or courses which are unwanted or unnecessary.

The bumpy road of registration has become a veritable highway. Now if the class availability problem could be solved, nearly all of the significant registration ruts would be eliminated.

Official Notices

Students are responsible for the academic deadlines for adding or changing courses. No addition or change will be considered official unless the student has filed the necessary card with the registrar's office and paid the correct fees.

Students who wish to change or add a course must apply at the registrar's for a change/add card. Obtain the signature of your advisor and instructor on the card, return it to the registrar's office for approval and deposit the card and fee (\$1 for each change or addition) at the treasurer's office.

Changes and additions may be made only during the first five days, or from March 28 through April 3. To be official, cards must be received by the treasurer no later than 4:30 on April 3. The above dates are published on all class schedules and bulletin boards and you will be held responsible for being aware of them.

Mary Alice Lee
Registrar

Spurs Set Deadline For Member Applications

Applications for Spurs will be available from 10 a.m. to 3 p.m. in the Sodality office. Wednesday will be the last opportunity to apply. All freshman girls with at least a 2.5 g.p.a. are eligible.



Editor's note: "Campus Crossroads" is designed to inform the reader of interesting happenings at other universities throughout the nation. The information is taken from student publications.

Pioneer Log (Lewis and Clark, Portland, Ore.)

A yo-yo craze has hit the campus at L&C. One suggested explanation was "that the apparent popularity of the yo-yo is an attempt to recapture lost youth" . . . or "Maybe playing with a yo-yo is just plain fun—which makes the search for a reason unnecessary."

The Santa Clara

"None File for ASUSC Offices . . . Class Offices Also Ignored" pretty well sums up the situation at the opening of filings for student body positions at S.C. this year. Although a large crowd turned out for the filing assembly . . . "For the first time in the history of the University, no one declared himself for any office."

College Times (Los Angeles State)

"A poll . . . of LASC students and educators revealed that the majority opinion on campus favors raising the entrance requirements for the College." The resulting program, which was approved by the state board, will tighten admission standards, make certain courses mandatory, and set enrollment limits. Entrance will be confined "to the top 39 per cent of high school graduates."

Creightonian (Omaha, Nebraska)

"Like educational institutions throughout the nation, Creighton has recognized the need for special classes geared to superior students. As a result, honors sections may be found in . . . English, math, chemistry, theology, and philosophy. The purpose is to challenge top students and to give them a richer and fuller course," says Fr. T. McKenney, S.J., Arts and Sciences dean. "We don't consider honors courses, as such, the ideal arrangement (which) would be to have a completely separate honors program in which top students would have an exclusively honors curriculum," he said.

Temple University News (Philadelphia)

The Temple University student council has abolished the presentation of class-sponsored dances in favor of an All-University Weekend. The junior class president stated that the dances' main function "is to promote social interaction among members of a class. This has been grossly inadequate, as is shown by the attendance." The new event tentatively will include "a folk sing with a group like the Limelitters," a jazz concert, and a "big name band" dance.

THE SPECTATOR

Official publication by and for the students of Seattle University. Published Wednesdays and Fridays in the school year. Editorial office at the Student Union Building, business office at Lyons Hall, both at 11th Ave. and E. Spring St., Seattle 22, Washington. Subscription rates \$3 per year. Entered as third-class matter.

LUIGI'S PIZZA

Featuring Seattle's Finest

Spaghetti and Pizza

718 PIKE
MA 4-6313

for
ORDERS TO GO

92 Yesler Presents Walt Robertson's Folk-ways

A reward in art

April 10-14
8:30 p.m. to 3 a.m.

prices as usual



4-HOUR DRY CLEANING SERVICE MASTER CLEANERS

KNITS and FORMALS a SPECIALTY

Minor Repairs Free

Discounts to Seattle U Students and Faculty

1209 MADISON

MAin 4-6636

MALES UNDER 25 YEARS

"MARRIED OR NOT"
See Us About

AUTO INSURANCE

IT WILL PAY

BOB MATSON and CARL JONES

3046 N.E. 45th

LA 5-4082

SHERMAN
OPTICAL Company

"Guild Opticians"

CENTRAL
328 4th & Pike Bldg.
MAin 2-7458

BALLARD
1701 Market Street
SU 4-0700

BURIEN
S. W. 144th & Ambaum Way
CHerry 3-8998

UNIVERSITY
1301 East 45th
MEIrose 3-3710



Conveniently located in our own building out of high rent district. Serving S.U. More Than 10 Years

VIRGIN DIAMONDS

Precision Cut for Maximum Brilliance

For Engagement Rings

FRANK KIEFNER

Master Watchmaker — Jeweler

Diamonds • Watches • Silverware

512 Broadway E. EA 4-4410

TERMS IF DESIRED
Special Student Discounts

CORSAGES



Members of Florists' Telegraph Delivery

BALLARD

BLOSSOM SHOP

2001 Market St.

SUNset 2-4213

"City Wide Delivery"

Keith's Drive In

Now Featuring:

BURGER BASKET

our DELUXE BURGER

65c

with FRIES and SALAD

CHICKEN DINNER

98c

1/2 FRIED CHICKEN, SALAD, ROLL

FISH and CHIPS — PRAWNS — SCALLOPS

Weekends

11 a.m. - 2 a.m.

Daily

11 a.m. to Midnight

15th at E. MADISON

Serving Your Auto Needs:

JOE SHERIFF'S RICHFIELD

- Motor Tune Up
- Electrical
- Light Repair
- Lubrication
- Brakes

Just across from Chieftain

11th & E. Madison

D'Amico, Keenan Tabbed to Twirl Tuesday

By MIKE McCUSKER

Eddie O'Brien has nominated Rudy D'Amico and Frank Keenan for starting duties in Tuesday's season-opening baseball double-header against Western Washington, scheduled for 1:30 p.m. at S.U.'s Broadway Playfield.

O'Brien swings into his fourth season as chief of the S.U. diamond brigade, which last season compiled a 20-8 mark. Graduation losses were light, but took Larry McCauley, the team's Most Valuable Player, Chuck Parmelee and Lloyd Burgart.

THIRTY-TWO horsehide hopefuls are turning out, with 12 lettermen on hand. O'Brien expects to carry a 20-man squad. "We have all our pitchers back," the coach said. This includes the Big Four of D'Amico (4-6), Keenan (5-1), Jim Hatzenbihler (4-1) and Jim Arnsberg (2-0). D'Amico and Hatzenbihler were troubled with sore arms last year, but appear fit now.

The catching will be split between Steve Wandzilak (.409) and Jerry Schatz (.179).

A tentative infield will have Rich Kayla (.295) at third, Glen Mattison (.310) at short, Frank Michael (.413) at second and either Jack Fitterer (.257) or newcomer Mick McDonald at first.

Returning outfielders are Bob Neubauer (.333), Harry Lambro (.308) and Dan Salceda (.111).

"**OUR HITTING** is good; I'm not worried about that," O'Brien said. "Defensively, we're adequate. We could use a little more speed in the outfield. I'm looking for a second baseman who can make the pivot and give us a strong double-play combination."

Among the freshmen, O'Brien named McDonald (Yakima), John Vincent (Bellevue), Steve Hunter (Penticton, B.C.), and Denny Hodovance (Perth Amboy, N.J.) as likely to break into the lineup.

TENNIS SCHEDULE

Date	Opponent	Site
Mar. 31	Evergreen Tennis Club	E.T.C.*
Apr. 4	U.P.S.	E.T.C.
Apr. 10	P.L.U.	Tacoma
Apr. 12	Portland	Portland
Apr. 13-14	S. Ore. College Tournament	Ashland, Ore.
Apr. 18	S.P.C.	Vol. Park
Apr. 20	Oregon	E.T.C.
Apr. 21	O.S.U.	E.T.C.
Apr. 26	W.S.U.	Pullman
Apr. 27	Eastern Wash.	Cheney
Apr. 28	Whitworth	Spokane
Apr. 29	Gonzaga	Spokane
May 4	Eastern Wash.	E. T. C.
May 7	Idaho	E.T.C.
May 9	P.L.U.	E.T.C.
May 11	West. Wash.	Bellingham
May 14	U.P.S.	Tacoma
May 16	S.P.C.	Rogers Field
May 18	Portland	E.T.C.

* Evergreen Tennis Club, 1233 S. 168th St., Burien.

BASEBALL SCHEDULE

Date	Opponent	Site
Apr. 3	Western Wash. (2)	S.U.
Apr. 6	S.P.C. (2)	S.P.C.
Apr. 7	U.W.	S.U.
Apr. 10	P.L.U. (2)	S.U.
Apr. 13	O.S.U.	Corvallis
Apr. 14	O.S.U.	Corvallis
Apr. 18	U.W.	U.W.
Apr. 21	Gonzaga (2)	S.U.
Apr. 26	P.L.U. (2)	Parkland
May 2	U.W.	S.U.
May 5	Gonzaga (2)	Spokane
May 9	Ft. Lewis (2)	Ft. Lewis
May 12	Portland (2)	S.U.
May 15	U.W.	U.W.
May 18	Portland St. (2)	Portland
May 19	Portland (2)	Portland
May 22	Ft. Lewis (2)	S.U.
May 24	S.P.C.	S.U.
May 25	S.P.C.	S.U.
May 26	U.W.	U.W.

(Single games 9 innings; double headers 7.)

Fahnestock, 2 Others Signed by Chieftains

Chieftain Coach Vince Cazzetta announced Wednesday the signing of three state high-school basketball stars to athletic scholarships. Rob Fahnestock of Seattle's Roosevelt High, Tom Delaney of Port Townsend and Larry Berg of DeSales High, Walla Walla, have pledged their affiliation to S.U.

FAHNESTOCK, a 5-11 ball-handling whiz, was named to the Dell high-school All-America list in his junior year. The fiery playmaker averaged 12.8 points last season.

"I've always wanted to go to S.U.," he said in a telephone interview, "and when I got the chance I took it." Asked whether his height would be a hindrance to his collegiate career, Rob replied, "I don't think so. I can jump fairly well—that's what I rely on." He added that he will spend the summer weight-lifting to build himself up.

DELANEY, 6-4, made this year's Class 'A' Tournament Team, after carrying a 20.5 average for the regular season.

Berg, a giant at 6-6, was ineligible for prep competition, but averaged 30 p.p.g. in local amateur league play.

"We're very fortunate to get

them," said frosh Coach Clair Markey, who will inherit the three-some on his Papooses next year. "We're way ahead of last year as far as the local boys go," noting that several other cagers have shown interest in S.U. Of Fahnestock, Markey said, "He plays along the same style as Charlie Williams."

CHIEFTAIN AVERAGES (FINAL)

	G	FG	FT	TP	AVE
Miles	27	247	109	603	22.3
Dunston	26	124	75	323	12.4
Shaules	25	91	74	256	10.2
Butler	26	105	52	262	10.1
Tresvant	27	85	48	218	8.1
Brennan	24	36	31	103	4.3
Smither	26	40	14	94	3.6
Preston	25	23	20	66	2.6
Dynes	1	1	1	2	2.0
Vermillion	13	9	3	21	1.6
Gecker	10	5	5	15	1.5
Stautz	21	9	4	20	1.0
Amundson	4	1	1	2	.5
Burton	9	1	1	3	.3
Gillum	6	2	2	2	.3
Jacobson	6	1	1	1	.2
Kavanagh	3				.0

Team Total 27 777 437 1991 73.74

S.U. Netmen Vie Tomorrow

By GERRY HANLEY

S.U.'s tennis team swings into action tomorrow at the Evergreen Tennis Club. They will take on the Tennis Club's own team. The opening match will begin at noon.

Player-coach John Curran's net team is an experienced team, but also has a number of promising newcomers. Besides Curran, there are three seniors on the team. The trio consists of Garfield's Jiro Suguro, Seattle Prep's Larry Wagner, and Stan Stricherz, from Tacoma's Franklin Pierce High School. Curran also has Mike Dowd, a junior from Blanchet High.

Pressing these veterans for a spot on the team will be a trio of promising newcomers. They are Highline's Larry DeDonate, Mike McHugh, a freshman from Seattle Prep, and Nick Murphy, a sophomore from San Diego's Point Loma High.

Softball Meeting Scheduled Today

A meeting of interested male softball players has been scheduled for 1 p.m. today in the gym, announced Dave Nichols, intramural director. Team rosters must be submitted at this time. There is a limit of 15 to a team.

Coed softballers will meet at 1 p.m. Monday in the Chieftain lounge.

Im
RATHSKELLER
1st
Viel Los!
308 Marion



SAVE A DOLLAR
AND MANY DIMES.
YOU WILL HOLLER,
"HAPPY TIMES"

**SELF-SERVICE
DRY CLEANING**
Located at
TERRY & JAMES

COLLEGE STUDENTS IN THE VACATION RIOTS

What touches off the vicious vacation riots in resort towns from coast to coast? What madness causes the drunkenness, open immorality, violent battles with police? What sudden mob impulse can motivate a crowd of 30,000 educated young men and women into a rampage of destruction? Perhaps it's a new way to "let off steam" . . . a savage kind of self-expression. But why are so many college students—presumably the nation's most "adult" and sophisticated young people—involved? Why do they knowingly risk their futures, even their lives for a few hours of wild abandon? In the new April McCall's, don't miss the unbelievable, yet true, report on the spread of this insane activity . . . the terrible price you may have to pay if you're involved . . . and how you can help stop the insanity.

in the new April

McCall's

NOW ON SALE AT ALL NEWSSTANDS



SOME PENS WILL GO TO ANY LENGTH TO MAKE A GOOD IMPRESSION

Case in point — the
Lindy
UTRACTAPEN
non-refillable retractable ball pen

Extra length. Extra-long ink supply. Long long-lasting. You never refill. Long (fine or medium) point. You see what you write. Retractable. Easy top-button action. Six colors. Color of the pen is color of the ink. Perfect balance. No writing fatigue. Smooth-writing. No smudging, no skipping, no false starts, The Lindy UTRACTAPEN. It measures up.

to make a long story short... 59¢
manufactured by
Lindy Pen Co. Inc. Culver City, Calif. U.S.A.

5 POINT CLEANERS

STUDENT
10%
DISCOUNT

CLEANING CENTER FOR S.U.

STEAK DAY

Every Monday, Wednesday, Thursday, and Saturday
Spencer Steak, Salad, Fries.....\$1.00

The Cottage

15th and E. Madison

RAINIER "60" LANES

— Friendliest In The West —

Ample Parking

Snack Bar

OPEN 24 HOURS

Max's Pro Shop
Complete Line of Bowling Equipment

1/2 Block South of Ball Park

2901 - 27th S.

PA 2-0900

Federal Recruiters to Interview S. U. Seniors, Graduate Students

Don Willis, S.U.'s placement director, has arranged for a federal recruiting team to interview seniors and graduate students interested in management and administrative trainee positions April 15.

John M. Young, regional director, U. S. Civil Service Commission, pointed out that this is part of a national program. In the Northwest, 220 positions will be filled.

ARTS, SCIENCE, and Commerce and Finance majors are eligible for these positions. As examples, Mr. Young listed these positions available for filing before July 1: 15 personnel investigative positions; 17 revenue officers positions; 4 food and drug inspector positions; 5 math and statistics trainee positions; 8 economists or utility specialist positions; 15 social security examiner positions with 40 expected next fall; 5 land law examiner

positions; 4 budget examiner positions.

Students interested in signing for interviews or obtaining additional information should call at the placement office, L.A. Bldg.

Fr. President to Receive Honorary Degree

The Very Rev. A. A. Lemieux, S.J., president of S.U., will be honored by the reception of an honorary Doctor of Laws degree at Gonzaga's commencement ceremonies on Sunday, May 27.

Dr. Charles Odegaard, U.W. president, and Dr. Seth Eastvold, president of Pacific Lutheran University in Tacoma, will receive similar honors.

Hiyu Hikers to Tackle Mt. Si's Snow Sunday

The Hiyu Coolees will tackle 4,100 foot Mount Si Sunday. Mount Si is located at North Bend.

Larry Southwick, president, said that hikers should bring a supply of water and be clothed for snow.

The climbers should bring their own lunches and \$1 for transportation. The Hiyu's will leave at 8:30 a.m. from the north end of the L.A. Bldg.

CLARK'S ROUND THE CLOCK

Special Room For PARTIES SMALL GROUPS CLUB MEETINGS

Free Parking Convenient to Major Bus Lines & Arterials, Theaters, Hotels and Seattle U.

ASK ABOUT OUR SPECIAL GATHERINGS PLAN, WITH No Room Rental Charge

1001 OLIVE WAY

BREAKFASTS LUNCHES DINNERS LATE SNACKS

GOOD FOOD 24 HOURS DAILY

Week's Events

TODAY:
Night school registration, 6:30-8:30 p.m., Pigott Aud.

SATURDAY:
Retreats: 9 a.m.; men, P. 551, Fr. Michael J. Toulouse, S.J.; women, L.A. 219, Fr. William F. LeRoux, S.J.

Night school registration, 11 a.m.-3 p.m., Pigott Aud.

SUNDAY:
Lenten Lecture, 7:30 p.m., Bannan Aud.
Y. R's, meeting, 7:30 p.m., Chieftain conference room.
Lambda Chi Theta meeting, 8 p.m., L.A. 223.
Last Day to register, add or change courses.

MONDAY:
Night classes begin.

TUESDAY:
"Martin Luther" movie, 7:30 p.m., Pigott Aud.
Hiyu Coule Hike to Mt. Si, 8:30 a.m., L.A. Bldg.
Senate meeting, 6:30 p.m., Chieftain Conference Room.

CLASSIFIED

LOST: billfold in gym Monday. Don't care about money. \$5 reward for other contents. Ed Leibold, Bellarmine Hall, EA 3-4968.

On Campus with Max Shulman

(Author of "I Was a Teen-age Dwarf", "The Many Loves of Dobie Gillis", etc.)

EDUCATIONAL TV: ITS CAUSE AND CURE

A great deal of nonsense has been written about educational television. Following is my contribution:

It has been said that television allots no desirable viewing hours to educational and intellectual programs. This is simply not so. For instance, you can see "The Kant and Hegel Hour" every day at 4 a.m. This excellent show is followed at 5 a.m. by "Kierkegaard Can Be Fun." For such lazy scamps as lie abed beyond that hour, there is a splendid program on Sunday mornings at 7:15 called "Birds of Minnesota, Except Duluth."

So much for the myth that TV gives no prime time to educational programs. Now let us deflate another canard: that TV is not eager to inject intellectual content in all its programs.

If you have sat, as I have sat, with a television planning board, you would know that the opposite is true. I was privileged recently to witness a meeting of two of TV's topmost program developers—both named Binkie Tattersall.

"Binkie," said Binkie to Binkie, "if there is one thing I am bound and determined, it's that we're going to have intellectual content in next season's programs."

"Right!" replied Binkie. "So let us put on our thinking caps and go to work."

"I forgot my thinking cap in Westport," said Binkie, "but I have a better notion: let us light a Marlboro."

"But of course!" cried Binkie. "Because the best way to think is to settle back and get comfortable, and what is the cigarette that lets you settle back and get comfortable?"

"I said Marlboro," answered Binkie. "Weren't you listening?"

"A full-flavored smoke is Marlboro," declared Binkie. "Rich tobacco, pure white filter, a choice of pack or box. What is better than a Marlboro?"

"A Marlboro and a match," replied Binkie. "Got one?"

Binkie had, and so they lit their good Marlboros and settled back and got comfortable and proceeded to cerebration.

"First of all," said Binkie, "we are going to avoid all the old clichés. We will have no domestic comedies, no westerns, no private eyes, no deep sea divers, no doctors, and no lawyers."

"Right!" said Binkie. "Something offbeat."

"That's the word—offbeat," said Binkie. They smoked and cerebrated.

"You know," said Binkie, "there has never been a series about the Coast and Geodetic Survey."

"Or about glass blowers," said Binkie. They fell into a long, torpid silence.

"You know," said Binkie, "there's really nothing wrong with



A cowboy, a deep sea diver with a law degree plus an M.D.

a cliché situation—provided, of course, it's offbeat."

"Right!" said Binkie. "So let's say we do a series about a guy who's a family man with a whole bunch of lovable kids who play merry pranks on him."

"Yeah, and he's also a cowboy," said Binkie.

"And a deep sea diver," said Binkie.

"With a law degree," said Binkie.

"Plus an M.D.," said Binkie.

"And he runs a detective agency," said Binkie.

"Binkie," said Binkie to Binkie, "we've done it again!"

They shook hands silently, not trusting themselves to speak, and lit Marlboros and settled back to relax, for Marlboro is a cigarette not only for cerebration, but for settling back with—in fact, for all occasions and conditions, all times and climes, all seasons and reasons, all men and women. © 1962 Max Shulman

* * *

This column is sponsored—sometimes nervously—by the makers of Marlboro, who invite you to try their fine filter cigarettes, available in king-size pack or flip-top box at tobacco counters in all 50 states.

Bradley Opens Interviews For Executive Secretary

ASSU President-elect Jim Bradley will interview applicants for executive secretary next Monday, Tuesday, and Wednesday from 1-3 p.m. in the ASSU office.

THE BROTHERS OF HOLY CROSS

TEACHERS Are Needed!

Men willing to dedicate their lives to GOD and MAN . . . at home and in the missions:

CONTACT: Director of Vocations
Brother Gilbert Burke, C.S.C.
Notre Dame High School
13685 Riverside Dr.
Sherman Oaks, Calif.

KAUFER CO.

TRADITIONALLY
RELIABLE SINCE 1904
CATHOLIC GIFT
AND SUPPLY
HEADQUARTERS
1904 FOURTH AVE.

VAUGHN'S

Student Clothing Union
4308 University Way



Now Open

year round
35% Discount*

on natural
shoulder
clothing to:

- students
- faculty
- School employees

*Drop by
4308 University
Way and pick
up a permanent
discount card . . .
Free.

VAUGHN'S
4308
University
Way
Seattle
Berkley
San Jose

Broadway Theatre

201 Broadway E.

EA 3-1085

Paul
NEWMAN

Piper
LAURIE

JACKIE
GLEASON

"THE HUSTLER"

Elizabeth Taylor

"BUTTERFIELD 8"

STUDENT PRICE: 65c with Student Body Card

H. E. (Hal) CLINE

GRADUATE S.U. 1957

Plan your financial future now!
Special plans for College Men
and Women

Call MU 2-4574 or LA 2-6938

NEW YORK LIFE

INSURANCE COMPANY
1025 Securities Bldg.



nylic

SHERIFF & THOMPSON

"We Repair All Makes"

MOTOR WORK
BRAKES

BODY WORK
PAINTING

AUTOMATIC TRANSMISSION

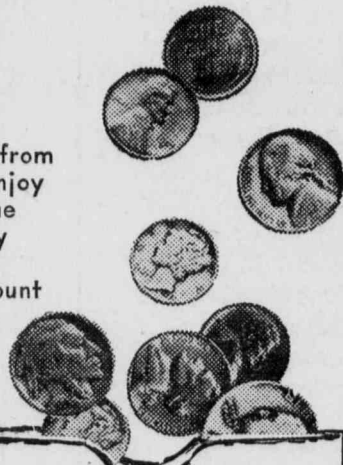
1130 Broadway

EA 4-6050

EA 4-6050

LOOKING for the best place to save?

For years Seattle University students have carried both their savings accounts and their checking accounts at the First Hill office of Peoples bank, just 3 blocks from the campus. Your savings enjoy full 3% interest . . . and the people at Peoples will gladly point out the advantages of either the CheckMaster account or regular checking account.



Come in soon!

FIRST HILL
OFFICE

1122 Madison Street

SAVINGS DEPARTMENT
PEOPLES
NATIONAL
BANK
for 70 years
OF WASHINGTON MEMBER F.D.C.