

10-25-1961

Spectator 1961-10-25

Editors of The Spectator

Follow this and additional works at: <http://scholarworks.seattleu.edu/spectator>

Recommended Citation

Editors of The Spectator, "Spectator 1961-10-25" (1961). *The Spectator*. 720.
<http://scholarworks.seattleu.edu/spectator/720>

This Newspaper is brought to you for free and open access by ScholarWorks @ SeattleU. It has been accepted for inclusion in The Spectator by an authorized administrator of ScholarWorks @ SeattleU.

Frosh Primary Tomorrow

Primary elections for freshman offices will be from 7:30 a.m. to 2 p.m., tomorrow, in the Chieftain cafeteria and the first floor of the L.A. Bldg., according to Wally Toner, election board co-ordinator.

Results of the primaries will be announced Friday in The Spectator.

AN ELECTIONS assembly for all freshmen will take place at 2 p.m., today, in Pigott Auditorium, said Toner. This will be an opportunity for voters to hear the candidates speak.

Freshmen must present their student body cards before they will be allowed to cast their ballots, he said. They may vote for five senatorial candidates, but only for one of those running for each of the class offices.

THE PRIMARIES will cut

the number of class officer candidates to two and the senatorial finalists to 10.

Last-minute filing raised the number of candidates to 34. Running for president are: Terry O'Brian, Bob Boyle, Mike Beers, Bryan Floyd and Mike McNett.

Seeking the vice presidency are: Michael McHugh, Louis Marzano, Pete Ferrai, Suzanne Green and Dave Verron.

THOSE WHO filed for secretary-treasurer are: Dorene Centioli, Timmie Ruef, Kittie Grotheer, Marianne Keenan and Sarah Jullion.

Senatorial candidates are: Kathy Jo Sweeny, Bart Irwin, Carol Nystrom, Jerome Miller, Terry McTigue, Sue Ferguson, Martin Toner, Melanie Cossalter and Judy Manke.

Mary Ann Lembiez, Roy An-

gevine, Eileen Browning, Margie Byrne, Mary Greenie, Suzanne Heguy, Sandi Whitworth, Vicki Slind and Diane Sischka.

Tjader Tickets On Sale Oct. 30

Cal Tjader will appear at 8:30 p.m., Tuesday, Nov. 7, for a two-hour concert in the S.U. gym. Tickets will be sold at the Chieftain starting Monday, Oct. 30.

There will be 1800 seats available, and the tickets will be sold for \$1.50 if an ASSU card is presented. The tickets can also be obtained at Sherman & Clay's for \$2.

No phone orders will be accepted, but if any tickets are left they will be sold at the door.

Forty-Four to Compete For Cheerleading Spots

Tryouts for cheerleaders and songleaders will be at 1 p.m. tomorrow in Pigott Auditorium, according to C. J. Michaelson, ASSU publicity director.

The results of the tryouts will be announced in Friday's Spectator.

THE INDIVIDUAL tryouts, beginning at 1 p.m., will run at five minute intervals. Those trying out are: Pat Pressentin, Joan MacDonald, Bob Garrison, Carolyn Vogue, Margie Hanson, Mick McHugh, Michele Drake, Patty Wenker, Jackie Ahrens, Eva Palmer, Margaret Nikolaisen.

Sally Bauerlein, Sue Schumacher, Judy Werthman; 2 p.m., Charleen Romero, Cris Peltzer, Tom Stammes, Chris Sifferman, Mary Michele Elliot, Lucia Buono, Kathie McElmiel, Sue Gallagher; 3 p.m., Mary Zohn, Robin Rowe.

Karyn Gallagher, Mary Lee

No Flu Vaccine Available At Student Health Center

The student health center has no flu vaccine available for students, according to Miss Corinne Donovan, nurse at the center.

Because of a government shortage at this time, S.U. has not received any additional vaccine, Miss Donovan said.

The center will inform the students when it has material for flu shots, she said.

Fashion Representative To Speak at Marycrest

Cay Mundorff Kershner, representative from Mademoiselle magazine, will speak to women students at 6:30 p.m., tomorrow, in Marycrest's active lounge.

The talk will be sponsored by the A.W.S. career series. According to co-chairmen Melissa Cadwallader and Carole Duni, refreshments will be served.

MRS. KERSHNER will outline the three contests which Mademoiselle sponsors each year. They include the college board contest, the college fiction contest and the art contest.

Also, she will give some ideas about a career with a fashion magazine.

Upperclass Honoraries To Sponsor Annual Tea

The annual Scholarship Tea, co-sponsored by Silver Scroll and Alpha Sigma Nu, upperclass students' honoraries, will be from 2 to 4 p.m., Nov. 12, in the Chieftain lounge, according to Ginger Ruby, Silver Scroll president.

GUESTS WILL include all freshmen with a 3.5 cumulative grade point from high school and upperclass students who have attained a 3.3 g.p.a. Also, all honors seminar and academic scholarship students are to receive invitations. The parents of any of these students are invited to attend, Ginger said.

All invitations will be mailed early in November.

The committee co-chairmen of the tea are: Sheila Donohoe, Mary Ann Hoare and Ann Donovan, invitations and guests;

Groups Prepare For Open House

Club open house will be presented from 7:30 to 10 p.m., Monday, in the Chieftain.

The annual event, which will include displays from 29 campus clubs, is designed to give student body members an opportunity to view the operations of the clubs and an opportunity to request membership. A trophy will be presented for the best display, which will be selected by judges.

JUDGES WILL be the Very Rev. A. A. Lemieux, S.J., president of S.U., Fr. Robt. Rebhahn, S.J., dean of students, and Miss Agnes E. Reilly, dean of women.

According to Sherry Doyle and Kathy Ermler, co-chairmen, refreshments will be served. Entertainment will be provided by the Docsons and either a band or recorded music.

At the Activities Board meeting Monday night, clubs were urged to begin preparations promptly at 6 on the evening of the open house. I.K.'s will be on hand to assist with table moving in the cafeteria.

Inside the Spec

'What, Me Worry?'	2
Senate Report	2
Letters to the Editor	2
Fellowships	2
Player of the Week	3
Week's Events	4
Xavier Officers	4

'World Boulevards' Homecoming Theme

"Boulevards of the World" will be the theme of the 1962 Homecoming, Trish O'Leary and Buzz McQuaid, co-chairmen of the program, announced to The Spectator today.

The emblem (pictured at right) will be used on all homecoming publicity and symbolizes the homecoming theme.

THE EMBLEM was designed by Sue Quirk, freshman physics major from San Francisco. The body of the maroon letters, "S" and "U" and the arrows at the conclusion of the letters signify the directions of the boulevards of the world.

The symbol of Century 21, has been modified to resemble a globe of the world.

THE SCHEDULE of events for this year's Homecoming includes: Variety show, Jan. 26 and 27; mixer (following variety show), Jan. 26; game (Portland U.), Jan. 30; student dance, Feb. 1; president's holiday, Feb. 2; and alumni dance, Feb. 3.

Other committee co-chairmen are: Dianne Wheeler, secretary; Jeff Pedersen, committee co-ordinator; Phil Perry, busi-

ness manager; Valerie Andrews and Mike Baer, art work; Marilyn Kam and Denny Williams, elections; Kathy Hogan and Don Luby, programs, tickets and invitations; Dick Peterson and Julie Bevegne, game.

LIZ BAUERNFIEND and Phil Rogers, dance; Carol Caviezel and Jan Greenfield, variety show; Mike Griffin and Sue Etchey, off-campus publicity; Ann MacQuarrie and Burke McCormick, on-campus publicity; and Peg Dibb and Fran Shanley, court.

Clubs to Sponsor Tour of McChord

Foreign students from S.U. may tour McChord Air Force Base Sunday. Fred Wong, president of the International Club, said that his club, the M.U.N., and the Air Force Power for Peace Program are sponsoring the tour.

The Air Force will provide a bus for 25. Wong asked that those interested drop him a note, Box 192, campus mail.

The group will leave at 9:15 Sunday from Eleventh and East Marion, and will return about 4:30 p.m.

They will visit a KC-135 Jet Tanker and a C-124 Globemaster. Col. Allison C. Brooks, wing commander, will give a talk.

Activity Board Plans Winter Social Dates

The preliminary organization for the winter quarter activities calendar was outlined at the Activities Board meeting Monday night.

The board, whose purpose is to give clubs an active voice in the distribution of dates on the calendar, is composed of representatives from approximately 30 clubs and is chaired by Paul Maffeo, ASSU 2nd vice president.

As each date is read by the chairman, interested organizations indicate their wishes. A list is then compiled and submitted to the student senate, along with a letter from each club enumerating their reasons for requesting the dates. The senate then determines the recipients of dates, based on need, and in some cases, the traditionality of the event.

THE EVENTS scheduled on the calendar for individual clubs are generally Friday night mixers, with some specialized functions, and the Sunday evening movies.

Major social dates that are also on the calendar are: homecoming mixer, Jan. 26; homecoming dance, Feb. 1; variety show, March 3 and 4; and the ROTC ball, March 9.

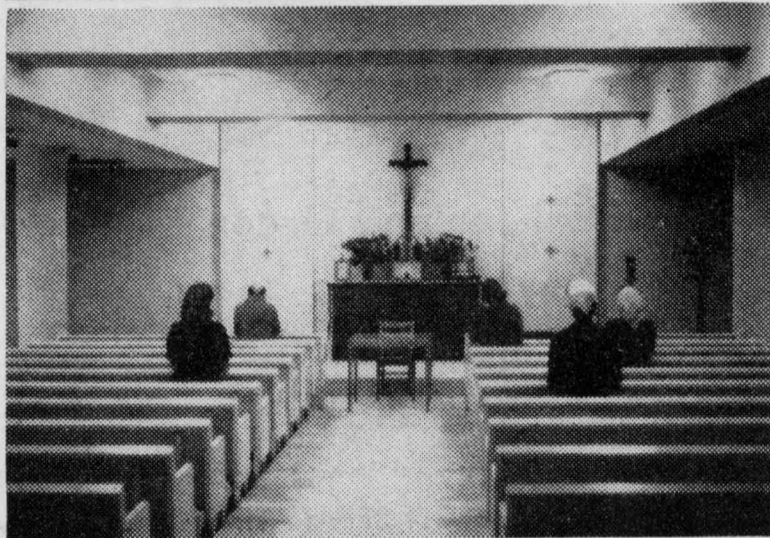
THE DATES open for competition and the clubs making requests are:

Jan. 5 (Friday) Interhall Council-Town Girls (Dorm-Town Tolo); Y.D.'s; Spurs; M.U.N.; Engineering Council; Pep Club; Pershing Rifles; Alpha Epsilon Delta; Lambda Chi Theta. **Jan. 12** (Friday), Interhall Council-Town Girls; I.K.'s (Pizza Prance); M.U.N.; Pep Club; Engineering Council; Alpha Epsilon Delta; International Club.

Jan. 14 (Movie: "The Tender Trap") Senior Class; Ski Club; Pep Club; Sailing Club. **Jan. 19** (Friday) I.K.'s; Town Girls; Y.D.'s; Spurs. **Jan. 21** (Movie: "Daddy Long Legs") Pep Club; Sailing Club; Marketing Club; Senior Class; Mu Rho Lambda. **Feb. 9** (Friday) I.K.'s; Alpha Epsilon Delta; Lambda Chi Theta.

Feb. 11 (Movie: "Say One For Me") Senior Class; Marketing Club; Sailing Club; AUSA; Mu Rho Lambda; Pep Club. **Feb. 16** (Friday) Pep Club; Soph Class; Town Girls; Y.D.'s; Y.R.'s; Frosh Class. **Feb. 23** (Friday) Frosh; Pep Club; Y.D.'s-Y.R.'s (joint). **Feb. 25** (Movie: "The Robe") Soph Class; Y.D.'s; Town Girls; Y.R.'s; Mu Rho Lambda; Sailing Club; Pershing Rifles; AUSA; Senior Class.

Mar. 2 (Friday) Pershing Rifles; Engineering Council; Pep Club; Town Girls; Spurs; Y.D.'s-Y.R.'s (joint). **March 11** (Movie: "Journey to the Center of the Earth") Senior Class; Sailing Club; Mu Rho Lambda.



NEW CHAPEL: The new permanent chapel for Marycrest Hall was completed last week. The richly designed room was formerly the girls' lower lounge, and special features include new furnishings, a complete sacristy and a permanent confessional. Seating capacity is about eighty.

EDITORIAL

'What, Me Worry?' Attitude of Students, Faculty

"What, me worry?" appears to be the philosophy prevalent on campus in regard to civil defense. In spite of the increasing publicity given to the bigger and better bombs being exploded, a general atmosphere of apathetic chaos surrounds the question of what to do in case of nuclear attack.

FEW PEOPLE with even the most elementary knowledge of civil defense procedure can be found on campus. No one at all, including student leaders and administrative faculty, can be found who has made any definite plans for action to be taken in the event of an emergency.

In view of the increasing world tension, this attitude is not only dangerous but ludicrous. It is all very well to have faith in God and government, but faith without works is dead and so will we be if we don't begin formulating some plan of action before the need arises.

THE FIRST STEP is to make civil de-



fense information available to the entire student body and faculty. Everyone should know the evacuation and take cover signals, the radio stations to tune to in event of attack and the basic supplies needed for survival.

The second step is to form a committee to explore evacuation and shelter possibilities on campus. The Civil Defense office has sufficient information available to establish protection but only through some kind of organized study can any effective plans be made.

FINALLY, all possible shelters and evacuation routes should be known by the students and faculty as well as the reception centers to which they would go in case of evacuation.

By taking definite steps to make the truth about blast and radiation danger, possible chances of survival, and the details of proper procedure available to everyone, we can replace both foolhardy apathy and defeatist panic with the educated confidence that comes from the realization that we are not totally helpless, totally lost in the event of an emergency.

ASSU Money Untied; Senate Seeks Passes

By CHUCK VERHAREN

At the close of the senate session last Sunday, Sen. Richard Peterson, Jr. (Auburn), uttered this plaintive request: "I'd like to see The Spectator print something nice about us."

In all fairness to the senator, his words must be placed in context. Fr. Robert J. Rebhahn, S.J., dean of students, had challenged the senators to ask themselves what they were doing for the students. In answering Fr. Rebhahn, Sen. Peterson maintained that the senate had passed worthwhile legislation, but The Spectator, ignoring the useful, had published only the ludicrous.

TO COMPLY with the honorable senator's request, this report will stress the motions passed for the benefit of the student body. Initially, the senate swallowed its pride and passed without change the 1961-62 student body budget after a barrage of reports from the ASSU president and treasurer.

Dave Irwin read to the senate a letter from the Very Rev. A. A. Lemieux, S.J., president of S.U., which presented a more logical, more feasible method of allocating the student allotment from student fees. To quote Fr. President: "... henceforth the President of the University will meet only with the president of the student body to determine the allotment from student fees to be distributed for student activities."

"THE STUDENT body can then work out its own procedure of how it wants to draw up its budget and who has the final say in regard to the distribution of the budget."

Fr. President further stated in his letter that the sum of the athletic budget will be deducted from the student allotment before it is given to the student financial board and student senate. This procedure is necessary since the student body "has a standing commitment to maintain intercollegiate athletics in a dignified manner ..."

Therefore the athletic budget is not subject to arbitration.

ALSO WITH specific reference to the student body, the senate approved the Lambda Chi Theta constitution. The servers' fraternity is now an official club of the ASSU.

Finally the senate resolved: "That the student cooperation committee be created to help provide a better Catholic atmosphere throughout the entire University by a collective effort to unite and fulfill these needs under the ASSU."

This committee is in an excellent position to carry out the proposals brought up in the Leadership Conference. The senate approved Jim Bradley as chairman of the committee.

IN DEFERENCE to Senator Peterson's request, this report will rapidly pass over the legislation which does not directly affect the student body as a group.

Ned Flohr was approved as the presidential appointee for senior senator. The Senate Forms Act was passed to enable the senate to number its legislation.

Sen. M. Flynn, Sr. (Seattle), moved that the senate request student activity passes for all senators from the dean of students. A motion for a roll call vote (a senatorial sign of personal conviction) failed. Three lone voices in the wilderness cried out in disapproval as the motion passed.

SOME 15 spectators observed the rise and fall of the 71st session. Among them were five freshman candidates for senate—a point of personal praise for Bart Irwin, Judy Manke, Jerry Miller, Diane Sischka, and Vicki Slind.

Fellowships Available to Graduates

S.U. upper division undergraduates planning on graduate work can apply for fellowship grants through the university. Fr. John Fitterer, S.J., dean of Arts and Sciences, has announced fellowship foundations available to graduates. Four are mentioned here.

THE DANFORTH Graduate Fellowships are awarded to qualified male graduates of any accredited college or university in the U.S. Applicants may be either single or married. Selections for the grants are based on scholastic ability, personality, integrity and religious and moral values.

All candidates must intend to enter college or university teaching or administration. The fellowship may be used at any accredited university in this country.

FULBRIGHT Fellowships are given to U.S. citizens for study abroad. Candidates must possess a bachelor degree and sufficient knowledge of the language of the "host country" to carry out the proposed study and to communicate with its people.

MARSHALL Scholarships awarded to students not yet 26 years of age are good for two or more years at any British university. The grants are made on the basis of intellectual ability combined with a capacity to play an active part in the community and life of

the university chosen by each selector.

GRANTEES OF RHODES Scholarships enter Oxford Uni-

versity. To be eligible, a candidate must be an unmarried, male citizen of the U.S., not over 24 years of age.

Letters to the Editor:

Applause from Afar

Dear Editor:

Having the opportunity to read a number of university publications via "exchanges," I have become interested in the controversy that has arisen between your paper and several of your student body concerning the effectiveness of S.U. student organizations.

In the letter to the editor (Oct. 13) in which the author "scolded" your stand in the matter of student government, I find two things wrong.

First, he failed to realize that only a fraction of readers ever write to the newspaper, and these are usually the ones that, in some way, take exception to what was printed. The great majority of people who agree with what was said seldom, if ever, take the time to acknowledge this to the editor.

Secondly, it appears that this "avid critic" has inescapably associated himself with the pitiful group of people that views things through rose-colored glasses and become irate when a person, or, in this case, newspaper questions an organization's efficiency. If only good comments were made on matters of public concern it would indeed be a very dull world in which to live.

The purpose of this letter is not to involve myself in the controversy (of which I admittedly

know very little), but to congratulate you on the courage of your convictions and for not backing down.

Sincerely,
Bill Barry, News Editor
Daily Evergreen
Washington State U.

To the Editor:

As a long-time Spectator reader and one-time Spectator writer, may I offer my congratulations?

After reading the first five issues of your paper this year, I realized that something unusual was happening: students were taking the time to sit down and write letters to you about not just one, but several editorials.

Some have been critical of the opinions expressed in your editorials; others have been critical of your action in printing them.

Those in the latter group should take a few moments to re-examine their concept of what a newspaper is and what an editor's job is—as you pointed out so well in your Oct. 6 editorial.

Whether or not your editorial points were well taken, you have stirred student interest and debate. That in itself is a worthwhile—and rare—achievement.

I, for one, hope you continue to do so.

Gail Delworth
Redding, Calif.
Class of 1960

Serving Your
Auto Needs:

JOE
SHERIFF'S
RICHFIELD

- Motor Tune Up
- Electrical
- Light Repair
- Lubrication
- Brakes

Just across from Chieftain
11th & E. Madison



Grotheer and Green
They're on the beam,
So Jump on the boat
Get out and Vote!

WE'RE RUNNING ON SEPARATE BALLOTS!

KITTY'S FOR SEC. TREAS.

SUZIE'S FOR V.P.

MALES UNDER 25 YEARS

"MARRIED OR NOT"
See Us About

AUTO INSURANCE

IT WILL PAY

BOB MATSON and CARL JONES

3046 N.E. 45th

LA 5-9444

John Curran Named Interim Tennis Coach

By GERRY HANLEY

John Curran, senior letterman, has been appointed interim tennis coach, Eddie O'Brien, athletic director, announced Thursday.

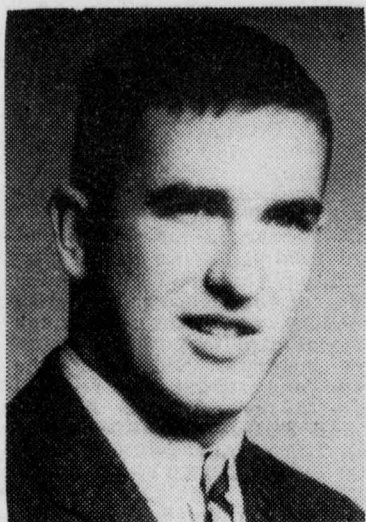
Curran will take over the coaching assignments while a suitable replacement is being sought, to take charge of Mr. Woodward's physical education classes as well as the coaching of the tennis team.

CURRAN has had a little experience in the coaching ranks. "He took charge of the team for Mr. Woodward during his illness last year and did a fine job," said O'Brien.

The organization of the team and the arrangement of the schedule will be John's main responsibilities.

"THE SCHEDULE will be much the same as it was last year," Curran said. "It will include 18 to 20 games. Games have been tentatively arranged with six schools. They include W.S.U., Gonzaga, Portland U., the U. of Oregon, Seattle Pacific College, and Oregon State."

Curran will have three veteran racquetmen, excluding himself, on the team this year.



JOHN CURRAN

The lettermen are Jiro Suguro, Mike Dowd and Stan Stricherz.

IN ADDITION to these experienced netmen, Curran will have the services of two promising freshmen. Fighting for the fifth position on the starting team, will be Mike McHugh and Bud De Donato.

Curran, who has been playing for six years, took up tennis seriously in his junior year at Seattle Prep. The Seattle Tennis Club is his home court.

Bill Meyer Top Gridder

Bill Meyer, a California Waste-Maker, is the intramural athlete of the week, Dave Nichols, football director, announced today.

Meyer, a freshman from Everett, won the top honor over 142 other intramural players. His performance in Friday's game against the Barflies proved him to be the week's top athlete.

Meyer figured in five of the Waste-Makers' six touchdowns. He started off the game with a 70 yard kick-off return touchdown and passed for four other touchdowns.

The top athlete was graduated from Everett High School and played basketball there.

The intramural department will host Meyers to a free dinner for two at a Seattle restaurant.

Other players considered for the honor, Nichols said, were Dick Sharp, passing for the Kiwis, and Frank Michaels, for his offensive and defensive leadership on the Omocs.

Once A Chief . . .

Dave Mills Makes Home Pro Debut

By JOHN CAMPBELL

Dave Mills, still a Chief, came "home" last Saturday to play his first professional game before familiar Seattle faces.

In his first invasion of the Civic Ice Arena with Hawaii's brand of Chieftainry, Dave looked nervous at first and made some ball-handling mistakes. He settled down at the beginning of the second half and became the aggressive, consistent player whom S.U. fans have known through the past three seasons. Dave tallied 15 points in Hawaii's 92-90 victory over the Chicago Majors.

FORMER GONZAGA star Frank Burgess, who saw very limited action for the Chiefs, was held to a pair of field goals.

"Because they stress offense in college basketball," Mills declared, "it has been hard trying to adjust to professional ball where the emphasis is on defense and offense is largely taken for granted. It's a lot more fun playing with the pros because you can devote your whole day to basketball without the additional burden of studies."

"It is also more enjoyable playing with Frank (Burgess) than trying to stop him from scoring against you," said Mills. "Although it is hard to travel around the country playing night after night, I am enjoying myself while I am still young and can take this punishment of the body. I do hope, however, to get back to S.U. in the spring quarter and finish the few hours I still need to get my degree."

Basketball fans are assured a full course of entertainment at 8 p.m., tomorrow, at the Civic Ice Arena when the Hawaii Chiefs once again take on the Chicago Majors and the Harlem Globetrotters play the Boston Whirlwinds. Tickets are available at Sherman & Clay.

OMOCS Unbeatable in Intramural Play

On Monday, the Omocs pressed the Kiwis with a versatile running-passing attack to down the birds, 22-8.

Early in the first half, the Omocs moved 30 yards on three Frank Michaels' carries. Later, a Mick Collins interception set up another Omoc score.

IN THE SECOND half, Omoc Jim Merrell connected on a pass to Don Connors to run up the score another six. The Kiwis retaliated with a scoring attack sparked by Dick Sharp's passing and Jeff Sullivan's receiving. Another Kiwi drive was set back when Sullivan dislocated a knee.

The Deadbeats were slaughtered by the Bellarmine Butchers, 32-12, in the second game. In the first half, both teams

moved the ball well. From his own 20-yard line, Lou Spear passed to Deadbeats Fred Labasan, Bill Shea, and Chuck Kirki, successively, for six points.

THE BUTCHERS struck back with a 95-yard run by Chuc Bahoskey. The rest of the period was virtually a standstill, until Butcher safetyman Frank Rusch picked off a Spear aerial and sprinted 50 yards to give the Butchers an eight-point half-time advantage.

The second half had the spirit of the first, despite a bombardment of hailstones. Rusch again intercepted on the mid-field stripe, and Bahoskey passed to Dick Cavaliere for another six. One play later, Spear hurled the pigskin fifty yards to Labasan for the

second Deadbeat touchdown.

AFTER A swift interchange, the Butchers took the lead and marched through the hail for two more touchdowns. The Deadbeats could not match the timely interceptions of Rusch and the long distance runs and passes of Bahoskey, and the game ended, 32-12.

On Friday, the Monarchs combined running and passing to total four touchdowns and whipped the Los Monigotes, 32-0. Figuring in the scoring for the Monarchs were John Curran and Bob Kazader.

In the second game, the California Waste-Makers squashed the Barflies, 38-0. Bob Boyle took the opening kickoff for the Waste-Makers and ran 70 yards for a TD. Teammate Bill Meyer passed successively for five touchdowns. The 38-0 score was the season's highest.

LUIGI'S PIZZA

Featuring Seattle's Finest

Spaghetti and Pizza

718 PIKE
MA 4-6313

for
ORDERS TO GO

The Finalists in

Dick's Barber Shop

(East Pike and Broadway)
Scholarship Contest Are

William Dodeward
Richard O'Brien
Nick Rossetto
John Brockliss
Burke McCormick
Jim Hardy
Tim Sullivan
Jim Sherwood

Add Your Name to
Next Week's List



Do Your Laundry the EASY Way

Any Hour — Day or Night

SAVE 35 to 50%

Westinghouse
Laundromat
REMODELED

WASH
25c
9 lbs.

DRY
10c
10 min.

Coin Operated - Self Service - Open Sundays & Holidays

612 BROADWAY LAUNDROMAT

Just Across from Marycrest
Free Parking: 716 Broadway

SPECIAL FOR S. U. STUDENTS:

For nine washes, get your tenth FREE.
See attendant for details.



SHERIFF & THOMPSON

"We Repair All Makes"

MOTOR WORK
BRAKES

BODY WORK
PAINTING

AUTOMATIC TRANSMISSION

1130 Broadway

EA 4-6050

EA 4-6050

TERRY McTIGUE

FOR

FROSH SENATE

PIZZA PETE



For a Pizza Treat!

232 Broadway E.

EA 5-2111

Frosh Campaigners Election Cards

1,000 2 x 3 1/2

White Cards

Black or Red Ink

Only \$4.00

Star Publishing Co.

(Tom Weaver)

WE 7-5495 Anytime

PIPES!



Seattle's Largest and Finest Selection of Quality Brand-Name Pipes from around the world — Sasieni, Comoy, G.B.D., Kriswill, Castello, Pipelane, etc. NOW . . . An exclusive shop for Pipe and Tobacco Connoisseurs, featuring imported Cigarettes from over 50 Countries, Tobaccos, Cigars, all Custom Smoking Blends as well as Our Own Pipe Repair Shop.
519 Pine St. Seattle 1, Wash.

PIPELANE, LTD.

(Across from Frederick's on Pine St.)
MA 2-3510

Fashion Representatives To Plan Shows, Booklet

By SALLY NEAULT

The A.W.S. Fashion Board will meet at 8 tonight, in the Chieftain lounge, according to Pat Monahan, chairman. The purpose of the meeting is to plan the board's fall fashion show and to begin work on the proposed fashion guide.

The proposed fashion guide is a pamphlet which will serve as a key to campus formal wear for women.

THE FASHION board is made up of two representatives from the sophomore, junior, and senior women students. This year's members, in addition to Pat, are: Ann Lange, senior; Nancy Nichol and Judy King, juniors; Lee Haegherty and Sharon Morrissey, sophomores. These girls will act as advisers in settling controversies on campus about new clothes styles or trends, said Pat.

Before the Thanksgiving holidays, the board will sponsor a fashion review of formals and cocktail dresses. The show will inform women students what type of gown is required for various formal functions.

DURING WINTER quarter, the "Best Dressed Girl On Campus" fashion contest will be sponsored by the fashion board. In this annual event,

girls will be nominated from various S.U. organizations to compete for the title.

The spring quarter fashion show will emphasize the trend in spring wear.

Week's Events

TODAY:

Electrical Engineering Club meeting, noon, Bannan Auditorium.

Mechanical Engineering Club meeting, 12:10 p.m., E101.

Creative Writing Club meeting, 3 p.m., English House.

Hawaiian Club meeting, 6 p.m., Chieftain Lounge.

AWS Fashion Board meeting, 8 p.m., Chieftain Lounge.

Sailing Club meeting, 8 p.m., LA 219.

I.K. meeting, 8 p.m., LA 223.

THURSDAY:

Freshman Primary Elections, 8 a.m. to 1:30 p.m., Chieftain, L.A. Bldg.

Cheerleader and Songleader Tryouts, 1 p.m., Pigott Auditorium.

AWS Speaker, representative from Mademoiselle Magazine, 6:30 p.m., Marycrest Lounge.

"Operation Crossroads," M.U.N. Film and Lecture, 7:30 p.m., P 153.

FRIDAY:

Bannan Building Dedication, 10:30 a.m.

Soph-Frosh Dance, 9 p.m. to midnight, Parker's Ballroom.

Hawaiian Club Elects Officers

Members of the Hawaiian Club will meet at 6 tonight in the Chieftain lounge.

Officers were elected at the last meeting. They are: Paul Chinen, president; Anthony Baron, vice president; Karen Dubrovin, recording secretary; Manuel Medeiros, treasurer; and Elliot Shimizu and Jim Love, publicity directors.

Moderator for the club is 1st Lt. Vic LeVesque, assistant professor of military science.

'Spec' Business Office Moves to Lyons Hall

The Spectator's business office is now located in Lyons Hall, Room 162, according to Michael Reynolds, business manager.

Also, Fr. Francis J. Greene, S.J., has moved the journalism department office to Ly 163.

AT THE PRESENT time, the office is without a phone and the advertising department may be contacted at the "Spec" office, Student Union Bldg.

Reynolds will keep office hours from 3 to 5 p.m., Monday, Wednesday and Friday, and from 1 to 5 p.m. on Tuesday and Thursday.

Official Notices

PRE-MAJORS

All pre-major students are instructed to consult the University bulletin boards for the names of their advisers. This list is also posted in all residence halls.

Mary Alice Lee
Office of the Registrar

INCOMPLETES

Students who have INCOMPLETES from spring and summer quarters, 1961, must officially remove the "I" grade by Oct. 30.

Obtain the incomplete removal card from the office of the registrar, pay the removal fee at the office of the treasurer, complete the class work and submit the removal card to your instructor. The instructor will enter the grade and submit the removal card to the registrar. INCOMPLETE REMOVAL CARDS BEARING THE GRADE EARNED WILL NOT BE ACCEPTED FROM STUDENTS.

To be considered official, the incomplete removal card is to be on file in the office of the registrar by Oct. 30 or the grade of "E" will automatically be entered on the student's record.

Mary Alice Lee
Registrar

WITHDRAWALS

Consult the bulletin boards or your copy of the fall quarter 1961 schedule for deadline dates for official withdrawals.

The last day to withdraw with a grade of "W" is Monday, Oct. 30. The last date to withdraw officially (grade of "PW") is Friday, Dec. 1. No withdrawals are per-

mitted after Dec. 1. A grade of "EW" which is computed as an "E" in your grade point average will be entered on records of students who do not officially withdraw.

Withdrawals are official when the student files the approved withdrawal card with the office of the registrar and pays the withdrawal fee (\$1 for each course) at the treasurer's office by 4:30 p.m. of the last withdrawal date. Cards or fees will not be accepted after that deadline.

Mary Alice Lee
Registrar

Xavier Residents Elect Cavaliere

Dick Cavaliere, sophomore first humanities major, was elected president of Xavier Hall last week. Other officers are Larry Erickson, sophomore accounting major, vice president, and Chuck Adams, junior accounting major, secretary-treasurer.

President Cavaliere told the residents that he would work hard, but he would make no promises he could not be sure of keeping.

Fr. Robt. Rebhahn, S.J., dean of students, and Cavalier will appoint seven members to each of the hall's two councils.

CLASSIFIED

FRENCH LESSONS by native. Group and private lessons. Experienced help for students. EA 4-9490.

ENGLISH TUTORING in your home. PA 3-8808.

WANTED: Students to sell Renaware cookware part-time. Guarantee or commission. Must be aggressive and ambitious. Contact Jim Nagle; SU 3-3662 or MA 3-8535.

LOST: Beige trenchcoat at "Harold's Club." Very anxious to get it back. Call Mike Beers, PA 3-3440.

THE SPECTATOR

Official publication of the students of Seattle University. Published Wednesdays and Fridays in the school year. Editorial and business offices at Student Union Building, 11th and E. Spring St., Seattle 22, Washington. Subscription rates \$3.00 per year. Entered as third class matter.

EDITOR-IN-CHIEF, JIM HARNISH
Managing Editor, Jan Kelly; Associate Editor, Judy King; News Editor, Randy Lumpp; Sports Editor, Gerry Hanley; Advertising Manager, John Campbell; Photographers, Tim Fitzgerald, Jim Haley; Faculty Adviser, Fr. Francis J. Greene, S.J.

Business Manager, Mike Reynolds; Office Manager, Juanita Pavelka; Circulation: Sue Geiger, manager; Andra Tschimperle, Judy Lehman, Ginger Ruby; Accountant: Suzanne Green.

MUSIC GO ROUND

THEATRE
On Broadway at Madison St.

ON STAGE
Oct. 31-Nov. 19

PAULA BANE
in Cole Porter's

CAN-CAN

Stewart BALLINGER Nagle JACKSON Sheril MORTON

Tues., Wed., Thurs., & Sun. at 8:30 p.m., \$3.00; Fri. & Sat. at 8:30 p.m., \$3.50; Matinees—Sat. at 2:30 p.m. and Sun. at 3 p.m., \$2.50

Phone Orders EAsT 5-8100
FREE PARKING FOR PATRONS

4-HOUR DRY CLEANING SERVICE

MASTER CLEANERS

KNITS and FORMALS a SPECIALTY

Minor Repairs Free

Discounts to Seattle U Students and Faculty

1209 MADISON

MAin 4-6636

"Sheriff Tex" Lewis
(Famous TV Personality)
Now Appearing Nightly
at 9:30

Golden Apple Restaurant

Dancing - Good Food
Cocktails

906 1st Ave.

Hawaiian Club Elects Officers

Members of the Hawaiian Club will meet at 6 tonight in the Chieftain lounge.

Officers were elected at the last meeting. They are: Paul Chinen, president; Anthony Baron, vice president; Karen Dubrovin, recording secretary; Manuel Medeiros, treasurer; and Elliot Shimizu and Jim Love, publicity directors.

Moderator for the club is 1st Lt. Vic LeVesque, assistant professor of military science.

'Spec' Business Office Moves to Lyons Hall

The Spectator's business office is now located in Lyons Hall, Room 162, according to Michael Reynolds, business manager.

Also, Fr. Francis J. Greene, S.J., has moved the journalism department office to Ly 163.

AT THE PRESENT time, the office is without a phone and the advertising department may be contacted at the "Spec" office, Student Union Bldg.

Reynolds will keep office hours from 3 to 5 p.m., Monday, Wednesday and Friday, and from 1 to 5 p.m. on Tuesday and Thursday.

Official Notices

PRE-MAJORS

All pre-major students are instructed to consult the University bulletin boards for the names of their advisers. This list is also posted in all residence halls.

Mary Alice Lee
Office of the Registrar

INCOMPLETES

Students who have INCOMPLETES from spring and summer quarters, 1961, must officially remove the "I" grade by Oct. 30.

Obtain the incomplete removal card from the office of the registrar, pay the removal fee at the office of the treasurer, complete the class work and submit the removal card to your instructor. The instructor will enter the grade and submit the removal card to the registrar. INCOMPLETE REMOVAL CARDS BEARING THE GRADE EARNED WILL NOT BE ACCEPTED FROM STUDENTS.

To be considered official, the incomplete removal card is to be on file in the office of the registrar by Oct. 30 or the grade of "E" will automatically be entered on the student's record.

Mary Alice Lee
Registrar

WITHDRAWALS

Consult the bulletin boards or your copy of the fall quarter 1961 schedule for deadline dates for official withdrawals.

The last day to withdraw with a grade of "W" is Monday, Oct. 30. The last date to withdraw officially (grade of "PW") is Friday, Dec. 1. No withdrawals are per-

mitted after Dec. 1. A grade of "EW" which is computed as an "E" in your grade point average will be entered on records of students who do not officially withdraw.

Withdrawals are official when the student files the approved withdrawal card with the office of the registrar and pays the withdrawal fee (\$1 for each course) at the treasurer's office by 4:30 p.m. of the last withdrawal date. Cards or fees will not be accepted after that deadline.

Mary Alice Lee
Registrar

Xavier Residents Elect Cavaliere

Dick Cavaliere, sophomore first humanities major, was elected president of Xavier Hall last week. Other officers are Larry Erickson, sophomore accounting major, vice president, and Chuck Adams, junior accounting major, secretary-treasurer.

President Cavaliere told the residents that he would work hard, but he would make no promises he could not be sure of keeping.

Fr. Robt. Rebhahn, S.J., dean of students, and Cavalier will appoint seven members to each of the hall's two councils.

CLASSIFIED

FRENCH LESSONS by native. Group and private lessons. Experienced help for students. EA 4-9490.

ENGLISH TUTORING in your home. PA 3-8808.

WANTED: Students to sell Renaware cookware part-time. Guarantee or commission. Must be aggressive and ambitious. Contact Jim Nagle; SU 3-3662 or MA 3-8535.

LOST: Beige trenchcoat at "Harold's Club." Very anxious to get it back. Call Mike Beers, PA 3-3440.

THE SPECTATOR

Official publication of the students of Seattle University. Published Wednesdays and Fridays in the school year. Editorial and business offices at Student Union Building, 11th and E. Spring St., Seattle 22, Washington. Subscription rates \$3.00 per year. Entered as third class matter.

EDITOR-IN-CHIEF, JIM HARNISH
Managing Editor, Jan Kelly; Associate Editor, Judy King; News Editor, Randy Lumpp; Sports Editor, Gerry Hanley; Advertising Manager, John Campbell; Photographers, Tim Fitzgerald, Jim Haley; Faculty Adviser, Fr. Francis J. Greene, S.J.

Business Manager, Mike Reynolds; Office Manager, Juanita Pavelka; Circulation: Sue Geiger, manager; Andra Tschimperle, Judy Lehman, Ginger Ruby; Accountant: Suzanne Green.

MUSIC GO ROUND

THEATRE
On Broadway at Madison St.

ON STAGE
Oct. 31-Nov. 19

PAULA BANE
in Cole Porter's

CAN-CAN

Stewart BALLINGER Nagle JACKSON Sheril MORTON

Tues., Wed., Thurs., & Sun. at 8:30 p.m., \$3.00; Fri. & Sat. at 8:30 p.m., \$3.50; Matinees—Sat. at 2:30 p.m. and Sun. at 3 p.m., \$2.50

Phone Orders EAsT 5-8100
FREE PARKING FOR PATRONS

4-HOUR DRY CLEANING SERVICE

MASTER CLEANERS

KNITS and FORMALS a SPECIALTY

Minor Repairs Free

Discounts to Seattle U Students and Faculty

1209 MADISON

MAin 4-6636

"Sheriff Tex" Lewis
(Famous TV Personality)
Now Appearing Nightly
at 9:30

Golden Apple Restaurant

Dancing - Good Food
Cocktails

906 1st Ave.

STEAK DAY


Every Monday, Wednesday, Thursday, and Saturday

Spencer Steak, Salad, Fries.....\$1.00


The Cottage

15th and E. Madison

COPYRIGHT © 1961, THE COCA-COLA COMPANY. COCA-COLA AND COKE ARE REGISTERED TRADEMARKS



60,000,000 times a day
people get that refreshing new feeling
with Coke!



Bottled under authority of
The Coca-Cola Company by

Seattle, Washington
PACIFIC COCA-COLA BOTTLING COMPANY

The LATEST in Eyewear



CONTACT LENSES

LENZ OPTICAL, Inc.

1211 MADISON

Two Blocks from Marycrest
FREE Adjustment at Any Time

In the Northwest,
An Arthur's Wedding
Is a Tradition



Entrust important details of your wedding to Arthur's staff of experienced Bridal Consultants. Personal service costs nothing extra. Choose from the Northwest's most extensive selections for Bride and Attendants. Bridal gowns from \$29.95, Bridesmaid's from \$22.95.

ARTHUR'S

1322 5th, Seattle
evening appointments; MA 2-7696