

The Spectator

1-23-1958

Spectator 1958-01-23

Editors of The Spectator

Follow this and additional works at: <http://scholarworks.seattleu.edu/spectator>

Recommended Citation

Editors of The Spectator, "Spectator 1958-01-23" (1958). *The Spectator*. 603.
<http://scholarworks.seattleu.edu/spectator/603>

This Newspaper is brought to you for free and open access by ScholarWorks @ SeattleU. It has been accepted for inclusion in The Spectator by an authorized administrator of ScholarWorks @ SeattleU.

Solicitation Period Over; 40% Returns \$4,000

The development drive officially ended this week and it was announced by the drive committee that so far the tabulations show it to be a tremendous success.

Forty per cent of the total student body have donated their support already and 100 per cent of those people contacted pledged money.

Over \$4,000 has been realized to date but the final figure cannot be given until all the money and pledge cards have been turned in to the committee. The importance of doing this cannot be over-emphasized and it is requested by Leo Costello, drive chairman, that the solicitors do this immediately.

A table staffed by development drive members has been set up in the Chieftain from 11 a.m. to 1 p.m., with the express purpose of collecting cards and money from these people.

The following is the first part of a list of students who have pledged their support. This list is not complete—more names will be run next week.

Abegglen, Harold; Abrams, Frances; Abrams, Richard; Adams, Andrea; Al-

berts, Adolf; Alberts, Anthony; Allen, Susan; Alexander, Dorothy; Anderson, Carol; Anderson, Gary; Anderson, Geraldine; Anderson, Kathryn;

Anderson, Oscar; Anderson, Shirley; Anderson, Wilfred; Andrews, Richard; Anglin, Florence; Arata, Joanne; Arima, Ranganatha; Arndt, Maureen; Arralde, Isabel; Arsenault, Joann; Artoe, Sandra; Assante, Michael; Atwood, Mariella; Augustiny, John;

Bachelder, Karen; Baginski, Dolores; Baker, Virginia; Ballard, Dan; Ballard, Judith; Banks, Nancy; Barker, Ben Etti; Barnes, Frank; Barone, Gloria; Barr, Margery; Barrett, Patricia; Barrie, Mary Ann; Barry, Robert;

Barry, Roberta; Bartz, Frank; Bauer, Kathleen; Bauer, Marilyn; Bean, Lelani; Becker, William; Belmont, Charlotte; Benson, Jacquelyn; Bentz, Richard; Bergevin, Alice; Berglund, Marilyn; Bergman, Sharon; Bertucci, Santicia; Bidwell, Sandra; Bigger, Gary; Billman, Susan; Binnett, Joseph; Bissett, Ronald; Blanc, Virginia; Blazina, Dennis; Blewett, Anita; Blood, Barbara; Bloom, Felice;

Booriak, Vladimir; Bosko, Rosemary; Bosserman, Peter; Boulanger, Lawrence; Bowen, Margaret; Boyle, Maureen; Boyle, Michael; Bradley, Leo; Brady, Irvine; Brandes, Barbara; Brennan, Rebecca; Briskey, Mary;

Broell, John; Brown, S. Felix; Bruck, Robert; Buckley, Michael; Burby, Mary Pat; Burke, Beverly; Burley, Gerard;

Cahill, Patrick; Cain, Mary; Cain, Maureen; Calhoun, Darla; Cammarano, William; Caraway, Betty; Carey, M.

JoAnne; Carlone, Angelo; Carroll, Mary; Carroll, Patricia; Carter, Barbara; Castonguay, Thomas;

Ceccarelli, Don; Cejka, Doris; Chaney, Diane; Chatman, Joan; Chavis, Bonnie; Chesley, Mary; Chicketti, Jeanette; Chinen, Paul; Christianson, Nell; Christopherson, Gall; Clasen, Diane; Cleary, Kathleen; Clemen, James; Clemen, Mark; Cluph, Wallace; Coates, Linda; Cobb, Julie; Cole, Wesley;

Conger, John; Conley, Charles; Conlon, Carol; Conners, Cecilia; Conners, Lucy; Contreras, Santos;

Cook, Howard; Cook, Richard, Jr.; Coombs, Robert; Copp, Bryan; Corcoran, Floyd; Costanti, Judith; Costello, Leo; Cote, Joseph; Covich, Eleanor; Cozzetti, Louis; Crane, Dick;

Crenna, Patricia; Crowder, Carol; Crowley, William; Cullerton, Brian; Culver, Craig; Cunningham, Connie; Curry, Charles W.; Curry, Sheila;

Dally, Robert; Daniels, Jack; Darghety, Terry; Davies, Patrick; Davis, Mary; Davis, Melvin; Deboer, Victoria; Dederer, Gary; Defina, Dorothy; Degrazia, Fred; Delohanty, Teresa;

Delaney, Sheila; Delgianni, James; Delworth, Gail; Demko, Andrew; Dennehy, Patricia; DePillo, Esther; Des-

mond, Michael; Deymonaz, JoAnn; Di-

cicco, Janet; DiGrazia, Mary; Diluzio Marjorie; Divall, Benny; Dollard, Barbara; Dombek, Donna; Donner, Joan; Donohue, Larry; Drake, Lorene; Driscoll, Maureen; Drong, Janie; Drum, Michael; Dugaw, Kathleen; Dumas, George; Dundon, Sheila; Dunne, Diane; Dwyer, Joseph; Dwyer, Mary;

Eberhardt, Lee; Eberhart, Elissa; Eckhoff, Helen; Egashira, Henry; Eisinger, Thomas; Ellefot, Jan; Elliot, Mary; Emerson, Mark; Eng, Jack; Enslow, Dan; Ericson, Gerald; Erickson, Margaret; Estes, James; Evans, Betty; Evans, Raymond;

Fagan, Kathleen; Farabaugh, Earl; Farrell, Frances; Fedora, Jeannette; Feid, Frances; Feller, Marion; Fernandez, Beatrice; Fernandez, Mary; Field, Yvonne; Finegan, Catherine; Fleece, Judith; Flint, Shelly; Fogelberg, John;

Folden, Nolan; Fordon, James; Formolo, Jill; Fosnick, Gerald; Fournier, Margaret; Fouty, Clifford; Franks, Lorraine; Fraser, Jean; Fuda, Don; Fuller, Kenneth; Furness, Milton, Jr.; Fury, Lynn;

Galbraith, Patrick; Gallagher, Patricia; Gallivan, Grace; Gallucci, Ronald;

Garay, Natalie; Gavin, Mary; Gerschke, Sherry; Gill, Karen; Kimness, Joyce; Glitschka, Donald; Gliva, Charles;

Glowacki, Ejaya; Golden, Henry; Goodman, Daniel; Goodman, Lawrence; Goodrich, Billie; Gordon, Barbara; Gordon, Barbara; Gordon, Jacqueline; Gorger, Elizabeth; Goudeare, Gloria; Grady, James;

Graften, Donald; Grant, Alexander; Grant, Gerald; Grant, Joseph; Greene, Richard; Gribbon, Anne; Gross, Joan; Guinn, Sandra; Gussman, Ruth; Guth, Barbara; Gwina, Susan; Gyrog, Carol;

Hansen, Robert; Hardison, Janice; Harnish, John; Harrell, P. Burke; Harrison, Mary; Hart, Janet; Harwood, Adria; Hasenoehrl, Loretta; Haslam, James; Hastings, William; Hata, Elaine;

Hattrup, Wayne W.; Hayashida, Neal; Healy, Timothy; Hebert, Lorette; Heck, Elsie; Heenan, Denise; Henderson, Harold; Henninger, Mary Jo; Henrickson, Brian; Herald, Chester; Herbert, Mary; Hill, Christina; Hill, Michael; Hindman, Ronald; Hines, Alicia; Hirabayashi, Hannah;

Hobercroft, Robert; Hodson, Joan; Hoeffler, Barbara; Hofmann, Margaret; Hohl, Suzanne; Homestead, Delbert;

(Continued to Page Four)

SEATTLE *Spectator* UNIVERSITY

Volume XXV

Seattle, Washington, Thursday, January 23, 1958

No. 13

Category Rules Explained As Literary Contest Opens

Entry blanks are now available for the first annual Gamma Sigma Alpha student writing contest.

They may be obtained at the Information Booth in the Pigott Building, at the English House on Marion St., or in the Spectator office in the Student Union Building. The blanks should be left in the Public Relations Office.

This contest is open to all students enrolled at Seattle U during the 1957-58 school year, and all entrants must file an entry blank. A student may enter as many categories as he wishes.

The deadline for submission of all material is Monday, March 10, 1958. All entries become the property of the Spectator. No competi-

tion will be held in any category with less than ten entries.

A list of explicit rules may be obtained with the entry blank. Students may enter in one of four divisions: article, editorial, poetry and short-story.

In this contest, "article" will be considered a non-fiction category and is not to be considered a news story. This category includes feature stories, interviews, essays, book reviews and articles.

Entries in the editorial category will be judged on their application to student life. All entries will be judged on the basis of adherence to the traditional concepts of the category.

SU Men Ditch Razors As Beard-Growing Contest Starts

Five o'clock shadow is destined to darken the SU campus within the next few weeks.

All regularly enrolled male students, with the exception of contest committee members, have been invited to participate in a Homecoming beard-growing contest, newly inaugurated this year.

Rules for the contest were released today by Don Barrett, contest chairman.

The contest will run from Friday, Jan. 24, until Monday, Feb. 10. Registration will take place in the Chieftain on January 24, from 11 a.m. until 1 p.m. All contestants must be clean-shaven at registration.

Judging will take place at Open House, the evening of February 10.

Beards will be judged on originality, neatness and general appearance. Names of judges and prizes to be awarded will be announced later.

In another Homecoming announcement, Pat Galbraith, general co-chairman, urged all clubs and organizations planning to enter skits, displays, or posters in Open House competition to submit entry blanks as soon as possible to the ASSU office.

"The degree of student response," stated Galbraith, "has not been as great as it was in the past years. If Open House is going to be successful this year, every organization on campus should plan to enter at least one of the three divisions."



"SPANISH FANDANGO" Co-Chairmen Peggy Prendergast and Joanne Arsenault are shown in the party dresses they're wearing to the AWS Tolo tomorrow evening.

'Spanish Fandango' Featured at Winter Tolo Tomorrow Night

"Spanish Fandango," the AWSU winter tolo, will be staged tomorrow evening at the Spanish Castle. Dancing from 9:30 p.m. to 12:30 a.m. will be to the music of Gordon Greene and his 13-piece orchestra.

The "Castle" was chosen for its appropriateness to the theme, Fandango, which is Spanish for dance. Gordon Greene, a native of Washington, has been the regular fea-

ture at the Spanish Castle for 25 years and originally played with Tex Howard and Vic Myers.

Pat Sherrer and Judy Lindblon, program co-chairmen, will have their committee selling programs in the Chieftain today and all day tomorrow. Bids are priced at \$2.50 per couple.

Co-chairmen Peggy Prendergast and Joanne Arsenault stress that the dance is semi-formal and non-corsage.

Jigger La Buda and Bobbie Kitts are decoration chairmen, while Mary Hanify and DeDe Hopkins have done the publicity work.

Nurses Slate Cookie Sale

The student body's chance to satisfy its collective sweet tooth is coming on Monday, Jan. 27, when the Nurses Club will sponsor its annual cookie sale.

The times and places where cookies will be on sale are the following: In the LA Building from 10 a.m. to 12 noon; in the Chieftain Cafeteria between 12 noon and 1 p.m.; and at Marycrest Hall (if any are left by that time) during the evening.

The cookies will be sold in amounts of five cookies for 10 cents.

Last year's profit from this event went to buying toys for the children's ward at Providence Hospital. This year's profits will go for a related purpose.

Barbara Novak, president of Nurses Club, is chairwoman of this sale. Sharon O'Byrne is in charge of publicity. General arrangements are in the hands of Virginia Blanc and Brenda McGroarty.

Vets Dance Saturday Nite

Saturday evening, Jan. 25, is the date for the first Vets Club dance of winter quarter, at the Senator Ballroom in Eagles Auditorium, Seventh and Union. Dancing will be from 9:30 p.m. to 1 a.m., to the music of the eight-piece orchestra, the "Stardusters." The evening's entertainment includes awarding of door prizes.

The dance is limited to veterans and their guests. Admission is \$2.50 per couple for club members who present their winter quarter membership cards at the door and \$3 for non-members. President Gil Martin adds that identification cards will be checked as usual for male students.

Arrangements have been made for 2 a.m. leave for co-eds living in the dorms. Faculty members are invited to attend as guests of the club.

Jim O'Reilly, general chairman of the dance, states that refreshments will be furnished free of charge.

Assisting O'Reilly are Leo Costello, in charge of refreshments; Dennis McElwain, handling tickets; Harry Hungerbuhler, publicity chairman; and Mike Williams, taking charge of the door prizes.

"RANSOM" IN PIGOTT
"Ransom," starring Glenn Ford and Donna Reed, will be shown Sunday night at 7:30 p.m. in the Auditorium. In addition, there will be a Walt Disney cartoon parade.

Admission is 25 cents. The movie is sponsored by Gamma Sigma Alpha, journalism honorary.



FRESHMAN HOMECOMING PRINCESS Rosemary Jellison brandishes a knife over Beard-Growing Contest chairman Don Barrett as she tries to shave the beard off of Barrett's distinguished jaw.



WINTER CARNIVAL PRINCESS Pat Schott is congratulated by Rick Thomas, KOL disc jockey; and Ski Club president Len Tangen at the "Sno-Ball" last Friday evening.

Editorial:

This is for you!

Those of you who have literary talent are encouraged to display these hidden qualities in the forthcoming literary contest. The first of its kind at SU, Gamma Sigma Alpha's contest has been devised to foster cultural interest in students who will be rewarded for outstanding effort with something more than vocal or written praise.

Often students who would enjoy writing for the paper are discouraged because they aren't asked or because they haven't an adequate interest in journalism to become a staff member. Sometimes it's lack of time to meet the deadline; however, this contest affords ample time for your best writing.

Along the same line, compositions written for an English class are often appreciated only by the professor and perhaps his circle of literary associates. Here again the professor can encourage his students to enter worthwhile work in a contest where the work can be seen in actual print.

The publication of a literary supplement is the accompanying innovation of Gamma Sigma Alpha's sponsorship which will take the place of the April Fool Edition. Winning works will be printed in the supplement and will then be entered in the national Catholic School Press Association literary contest.

Too often budding writing abilities are stifled by the lack of an avenue of expression. The avenue that Gamma Sig offers is publication in either the special Spring Edition or in future paper publications on the feature page, where non-winning but outstanding contributions will continue to be printed.

Posters, Pep and Prices:

ASSU reports

The "Star-Spangled Banner," our national anthem, was in the closing strains when suddenly the music was cut short. The ROTC color guard remained at attention and a ripple of laughter ran through the nearly full house at the Civic Auditorium. The occasion was the home basketball game between Seattle University and Montana State.

Merely an accident, caused by a little boy's carelessness. Nevertheless, the question arises, why was the national anthem being played on a phonograph? Where was our band? It's truly a sad state of affairs when a school our size depends on a record to open the ball-games.

We are not concerned with the reasons for this year's lack of a band, rather we must apply ourselves to a remedy for the situation. At first it was thought that the musicians in our student body were not interested in playing for the band.

After some investigation, however, it is increasingly evident that the students are eager to do so but have not been presented with the opportunity.

Realizing this, the effort is now being made to organize a pep band for the remainder of the home games. The student body office now has a list of students who play instruments and we are in the process of contacting these people and arranging suitable practice times. Bob Marsh, able ROTC band director, will be the guiding light.

If you play an instrument and haven't been contacted yet, please go to the student body office in the Student Union Building as soon as possible and submit your name.

A student cheering section without a band is a sorry sight. With the majority of our remaining home games being televised, let's put SU's best face forward.

— SANTOS CONTRERAS

At registration each quarter each student pays a General Fee of \$25.00. Out of this money comes the Student Body Fee. However, few students realize exactly how this money is spent or distributed.

This money is used to support the Sodality, Gavel Club, musical and dramatic productions, the spiritual advisor, athletics, the newspaper you are now reading, and student government.

The fee is allotted to the various accounts by the Financial Board, which consists of Mary Helen Vanderhoef, Bill McMenamin, John Edwards and the ASSU treasurer.

The account you are probably most interested in is that of student government, since it has a wider scope than the others. This year the ASSU started with a balance of \$2,100. We now have a balance of approximately \$1,350.

Thus far we have tried to provide the student body with free socials, better movies at cheaper prices, and better lectures with no admission charged. We are attempting to provide activities, both social and cultural, at the most reasonable cost to the students.

Those of you who have handled finances for clubs on campus know the procedures involved in obtaining requisitions. Forms must be filled out in triplicate, signed by the Dean of Men, a member of the Financial Board and the ASSU treasurer. They must then be distributed to the proper offices.

We realize that this is a very difficult process, but it is the only method that fits our present circumstances.

Throughout the remainder of the school year we will do our best to help you with financial problems and bring to you, the student body, every benefit we can.

— DAVE POISSON

Looking over the events so far this year, publicity-wise, things have been going fairly smooth. No specific complaints can be expressed; however, a word of thanks is in line to those people who have cooperated so well during the first half of this year.

Although the activities themselves have been efficiently run, the publicity of them has been only mediocre. It is up to the chairman of each event to see that publicity is put up at least a week in advance. The night school, along with day students, is interested in campus activities.

Classroom notices can be circulated for night school by contacting Bob Harmon, director of the evening division. Since many money-making projects have been done away with, the one or two events a club has for financial help must be advertised fully.

Concerning halftime entertainment for the home basketball games, we have arranged different and, we hope, interest-holding performances. Some of them will include Jimmy David, a spectacular trampoline artist, who is also competing for the Olympics; Irish dance from the Briscoe School in Kent and CYO basketball. With these and others, we hope to achieve our purpose, which is to entertain both the students and the general public.

In passing, a few words can be said concerning the student body, as well as class elections which will be coming up in the near future. In the past, about 40 per cent of the students have actively participated in these elections. With the addition of Pigott Auditorium, a made-to-order place for rallies, speeches and the like, student interest as well as spirit should increase. DO YOUR PART.

— PAUL TURNER

Away:

East of Eden

SPOKANE, Jan. 21 — A number of basketball fans were somewhat puzzled as the record crowd melted into the exit tunnels of the palatial Coliseum here Sunday.

The reason for their bewilderment was the small group of maroon-and-white-clad die-hards parading on the recently vacated basketball court in front of a large sign which said, "Hi Seattle!" They were singing the Seattle U Fight Song at the top of their voices, for their Chieftains had just delivered to them a 90-to-69 victory over the Gonzaga Bulldogs.

The Zags put up a good battle during the first half but the Chiefs were clearly the masters for the remainder of the game. Even so, the Seattle cheerleaders with their few Seattle fans (also a number of "recruited" fans) made noises, did dances, and acted as if they were cheering on a club that was twenty points behind.

Their repertoire gave evidence of long hours of practice; the crowd expressed their admiration by their applause. Spokaneites asked, "Why?" and "How?" I guess the answer is practice and desire. Anyway, as one Seattle sports writer put it, "I hope the students at home appreciate the yell-leaders as much as the Spokane fans did." My sentiments exactly. . . .

They cheered equally as well during the second game, although it was not quite as much of a run-away as the first.

Traffic Problem:

Learn to drive

• JUDY CAREY

The car was driving a little over 60 m.p.h., the wrong way on a one-way street. Suddenly, the driver realized his predicament.

He had two alternatives: to make a quick U-turn in which there would be the danger of swerving too wide and going in the wrong direction by doing a spin.

The other was to grab the first right turn and go around the block, following the pattern of the one-way streets. Which should he choose to do? Destruction for himself and others was ahead if he did not decide the right thing quickly.

This is an allegory. The car is life, the one-way street is the road to eternal happiness. Going the wrong way on the street signifies the leading away from eternal happiness, the quick U-turn symbolizes a sudden realization and a shallow, quick decision, the spin signifies the non-lasting results.

The right turn and drive around the block means a somewhat long, but lasting decision as the car gets back on the right one-way street and lastly, the driver is every one of us at one time or another.

Consider the feeling you would have if you WERE doing 60 m.p.h. NORTHBOUND on Fifth Avenue. It's the same with life. Evaluate the situation and find out which way you are headed. If you let it go, it may be too late to make that turn.

Pray every day that you and others stay on the right road; that is, the road of your purpose in life, the student vocation.

FROSH MEET

The Freshman Class will meet today in the Chieftain Lounge immediately after noon Mass. The Freshman Homecoming entries will be discussed.

Clearance

on
HATS • COATS • SUITS
DRESSES and FORMALS

Terry Avenue Gown Shop

1012 MADISON
Close to Your Campus

Elgin's average suffered but if team effort was important, he was number one. A Zag named Davis drew the defensive assignment on him. He stuck to Mr. B. like a dirty shirt (I mean he was all over him). Davis lasted until midway through the second half. Seattle brought in a 75-to-53 verdict and, for a bad night, that's not bad.

CHITTER - CHATTER

. . . A very colorful series . . . the Coliseum is a wonderful place in which to watch basketball. . . . Gonzaga's student body was all keyed up for this series and showed a lot of spirit. . . . They were so convinced that they would take at least one game that even-money, no-point bets on a split were as easy to come by in Spokane as chapped lips. . . .

I was surprised Monday to see a body hanging from a street lamp on Gonzaga's campus . . . it was labeled, "Blank Hank — Pure Po-

tency". . . Effigies are becoming more and more academic . . . and meaning less and less. . . . There was once a time when all heads would turn and people would run to see a coach in suspended animation.

I propose a contest . . . for the best suggestion as to "How to bring effigies back into the public eye" . . . entries to be submitted to the "Spec" office before February 1, 1958. . . . Hanging and burning are to be ruled-out as overworked. . . .

The winner will be awarded a coil of nine-thread manila line and a can of Energine. . . . The first place entry will be submitted to the NCAA and made available to all interested schools. . . . Should the winner be interested in desecrating a football coach, the award will be 18-thread line. . . . The judges' decisions will be final. . . . Athletes and their immediate families will not be eligible. . . .

• "OAKIE" OAKSMITH

Words of Wisdom:

Sound familiar?

• GAIL DELWORTH

Almost everyone has certain characteristic expressions which they use almost automatically. Lately, in several classes on campus, students have become increasingly aware that some of our learned and esteemed faculty members have fallen into the habit of saying particular phrases almost constantly.

We decided we would have a poll of the faculty this week. But that takes work, and being naturally lazy, we thought that we would probably get these answers anyway, so why bother asking them? Here are the answers . . . famous answers to SU students:

Father Gilmore: "Well, I really don't know anything about it, but . . ."

Mr. Reilly: "Ho there, girl!"

Father O'Callaghan: "It's allowed to read the book — yes?"

Mr. Sigelmann: "You are confused?"

Father McGuigan: "In the strict sense, that doesn't really belong in this course. Do you see the point?"

Father Toulouse: "It's the paradox that's real. You have a univocal mind."

Coach Castellani: "No comment."

Mr. Talevich: "Don't you know?"

Father O'Leary: "Scripture says . . ."

Mr. Kinerk: "I'll think about it over coffee in the Chieftain."

Father Donovan: "It would help if you studied."

Mr. Baldinger: "Well, back in Ohio . . ."

Father Logan: "Let's have a little life there!"

Father Carmody: "Well, I don't like him personally, but I don't want that to interfere with . . ."

Father Royce: "Have a stick of gum first."

Dr. Downes: "You've got to think!"

Father Sauvain: "Don't push the panic button."

Miss Rankin: "That and anything else that comes in on that section. Is that not so?"

Father Doherty: "Huh! They really didn't know what they were doing. No organization."

Mr. Suver: "Umhummm, that sounds pretty good."

Mr. LaCugna: "They don't theorize enough — too much practicality."

Father Bussy: "Well, 'Lawsie' . . ."

Father Reichmann: "I don't believe that the principle of double effect applies here."

Father Lindekugel: "You should apply that to daily life."

'Round town

• DE DE HOPKINS

ART
The "Prints of Reginald March" opened January 21 and extends through February 18 in the Frye Museum.

This exhibit features 62 framed examples of the people and architecture of New York City. It begins with the Bowery in 1928 and extends through League Print, 1949.

Also included in the exhibition are lithographs, etchings, engravings, sketches, slate proofs and actual plates; these show proof of March's gifted draftsmanship.

March, a Parisian born of American parents who were artists, began sketching at the age of three. He made a record of people in action in New York City and stressed the importance of a thorough knowledge of anatomical structure.

This is the last week to see Art Wood's collection at the Frye Mu-

seum. The "American Cartoon" exhibit ends this Saturday.

RADIO
KUOW-FM, the University of Washington radio station, is featuring as its weekly feature juvenile problems in a series, "Growing Pains." Teenagers and their problems will be discussed and evaluated by an adult panel. The time for this program is 8 p.m.

CONCERT
Monday and Tuesday, Jan. 27 and 28, at 8:30 p.m. the Seattle Symphony Orchestra will play in the Orpheum Theatre, featuring its season's orchestral highlight, "A Lincoln Portrait," by Aaron Copland.

David Byrd, a graduate drama student at the University of Washington, will act as narrator.

The other composition of the concert is "Symphonie Fantastique," by Hector Berlioz.

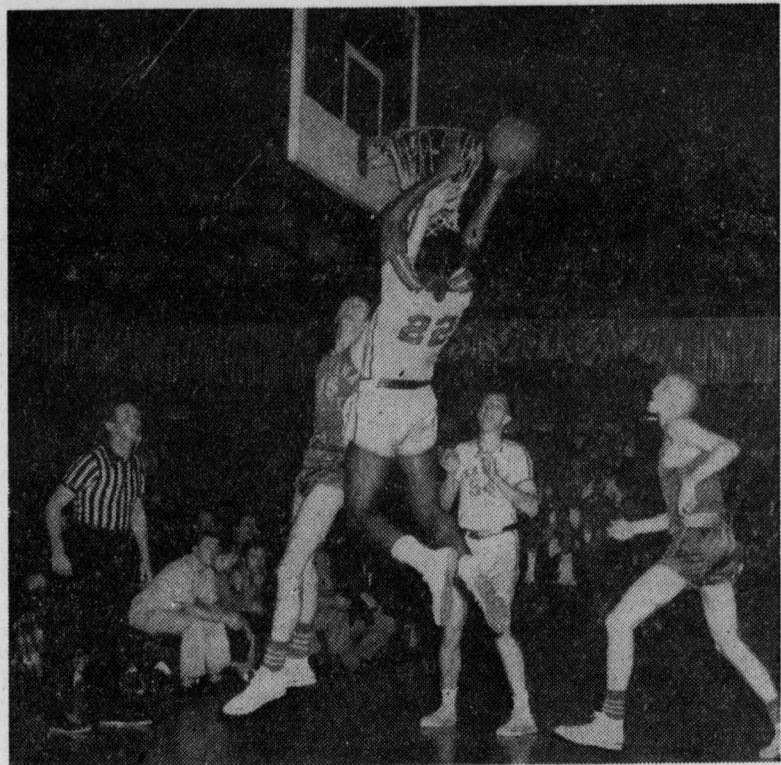
Seattle University Spectator

Official publication of the Associated Students of Seattle University. Published weekly on Thursdays during the school year. Editorial and business offices at Student Union Building, 11th and Spring St., Seattle 22, Wash. Subscription rates, \$3.00 per year. Entered as third class matter.

SONJA VUKOV
Editor-in-Chief

Feature Editor	Gail Delworth
News Editor	Mike Galvin
Makeup Editor	Fran Farrell
Sports Co-Editors	Chuck Schmitz and Fred Youmans
Copy Editor	Sue Hohl
Advertising Manager	Jerry Connelly
Business Manager	Joanne McClarty





BAYLOR JUMPS UP for 2 of his record-breaking 53 points against Montana State College last Wednesday night.

Chiefs Take Two from Zags; Baylor Scores 53 in MSC Tilt

By FRANK PIRO, Sports Staff

Seattle's Chieftains ran their victory streak to five last Monday, with a 75-53 pasting of arch-rival Gonzaga. The win marked the Chiefs' 29th victory in their last 42 starts and almost clinched another postseason tourney berth in March.

The most impressive factor about the lopsided triumph was the further evidence that SU has more than the one-man ball club that's been talked about all season long. Five players finished the contest in double-figures, led by All-America Elgin Baylor's 24 points.

Baylor also contributed 20 rebounds, besides passing off to his teammates for easy lay-ins. But despite Baylor's usual exhibition of the best in individual and team play, it was apparent that five others, including two substitutes, were also responsible for Monday night's victory.

Jerry Frizzell, probably the best full-time reserve in Northwest basketball, looked especially strong on the inside and racked up 11 points in a little over 20 minutes.

Jim Harney, the Chieftain captain, sparked the Seattle attack with six baskets from the field and his quarterbacking. The Chieftains displayed their screen-plays before the Spokane crowd and the results were positive. Harney and Don Piasecki, the sophomore guard, rid-

dled the hoop with ease and broke up the inside jam for their teammates. Piasecki finished the game with ten points.

Sophomore forward Don Ogorek also pumped in ten for the Chiefs, his average for the season. Another reserve standout besides Frizzell was Francis Saunders, who netted four points. Saunders, whose field goal percentage is over 60 per cent, played another of his fine floor games for Seattle.

The Chieftains now sport a 5-0 record over their NCAA opposition for a tourney bid. Portland, Gonzaga, and the strong Montana State club are the only teams with any chance of beating the Chiefs out of their postseason trip, and the trio has already fallen hard and fast before Seattle.

Seattle walloped Montana State by 25 points at Civic Auditorium on January 15, with "the Elgin" breaking the Northwest collegiate scoring record with 53 points. Baylor and Sweet Charlie Brown put on a big show for the home crowd and a television audience with a flood of court-length passes and sneaky assists.

If the Chiefs can take Portland and Gonzaga in their remaining series and beat Montana State at Bozeman, you can order your tickets for the San Francisco regionals. Seattle will be big-time for its eighth-straight season.

Battle of Winning Streaks on Line When SU, Santa Clara Clash Monday

By FRED YOUMANS

An exciting contest is on tap this Monday, January 27, when our Chieftains tangle with the Santa Clara Broncos at Civic Auditorium. The Broncos, 9-3 in overall college play, have won their last three games and are out to snap the Chieftains' recent streak of five-straight.

The Broncos were one of the three teams to beat SU last year, the teams splitting a pair of hard-fought games at Santa Clara. The Chieftains won the first game, 47-44, but were upset by the Broncos, 85-76, the following night. Monday's affair will be the only game this season between the two Coast powerhouses.

The California school is coached by Bob Feerick, now in his seventh year at Santa Clara. Feerick's teams have always been in the thick of the battle for Coast honors and in 1952 won the NCAA Western Regionals. The Broncos play in the tough West Coast Athletic Association, dominated in recent

years by the powerful San Francisco Dons.

Included in the Broncos' nine victories are wins over Stanford and USC, which could be classified as "upsets" by the young team Feerick has this year. With only one senior on the team, and all of three lettermen from last year's 15-7 squad available, Feerick's Five has still shown remarkable class for such a lack of experienced hands.

The losses include an overtime set-back to West Texas, a one-point defeat by Texas Tech, and a 65-42 beating by the Dons. Santa Clara's main difficulty has been a noticeable lack of height, and the Broncos stress ball control in an effort to overcome this disadvantage in playing their taller foes.

Top scorer on the team after the first dozen games is sophomore sensation Frank Sobrero. The 6-ft. 3½-in. forward has peppered the net for a 17.5 average. His running-mate on the starting five is 6-ft. 6-in. Mel Prescott, another

sophomore. The Class of '60 has five members on the varsity.

At center is 6-ft. 3½-in. Jerry Bachich, a starter last year and one man Chieftain fans should recognize. Little for a pivot man, Jerry still manages to pace the team rebounding and is the team's second-leading scorer. Bachich is one of the junior lettermen.

The guards are lone senior Gary Gillmor, a 6-ft. playmaker who has a 9.7 average; and Jim Taylor, the other letterman on the squad, a 6-ft. 1-in. defensive standout.

Substitutes who may see action, although Feerick usually stays with his starters as long as he can, are 6-ft. 4½-in. George Gardiner and 6-ft. 3-in. Jim Russi, both sophomores.

The Santa Clara game begins a five-game home stand for John Castellani's Chieftains. After the Broncos move out, Portland U invades Seattle for a return engagement with the Redmen on Thursday and Friday.

Intramural Hoop Action in 2nd Week; ROTC, Nooners, Probates Pace-Setters

Each intramural basketball team has played two games, as of Tuesday, but it is still far too early to try to predict a winner. The teams seem to be pretty fairly matched and there have been a number of close games in the two divisions; however, the American League appears to be the stronger.

American League action: On Thursday the Nooners set the Fiftths back, 67-26. John Brose collected 21 points for the winners, followed by teammate Hal Dodeward with 20. The ROTC team captured its second win Friday by dumping the Satellites, 66-38. Gene Boe's 14 points took scoring honors for the RO's.

Monday saw the Goinkers shade the Fiftths, 38-32. The Goinker scoring was well spread out, as high point man was Tom Treinen with 8, while John Rigg of the Fiftths had 14. Tuesday it was the

Nooners once more, squashing Kelly's Killers, 62-32. Brose with 21 and Dodeward with 16 again led the scoring for the victors.

National League play: The National League scores for the week were much closer than those of the AL. In Thursday's contest, the Dukes were edged by the Trees, 39-37. Paul Kuka canned 19 points for the Trees and Gary Pennington put in 9 for the winners. The Mafia eked out a slim 53-51 victory over the Champagne Charlies on Friday. The Mafia's Phil Contreras led all scorers with 20 points, while Frank Barnes sank 13 for the Charlies.

The Trees came back Monday to defeat the Huskies, 38-33. Ian Larsen with 15 and Bill Warner with 12 contributed the majority of the Trees' total. The Probationers gained the league lead Tuesday by chalking up their second victory

against no losses. They downed the Dukes, 42-36. Howard Wilkinson led the Probationer attack with 14 points. Jerry O'Brien's 12 points kept the Dukes in close pursuit throughout the game.

STANDINGS

AMERICAN LEAGUE		
Team	W.	L.
ROTC	2	0
Nooners	2	0
Goinkers	1	1
Satellites	1	1
Kelly's Killers	0	2
Fiftths	0	2

NATIONAL LEAGUE

Team	W.	L.
Probationers	2	0
Trees	1	1
Champagne Charlies	1	1
Dukes	1	1
Mafia	1	1
Huskies	0	2

LEADING SCORERS

(Compiled Friday, Jan. 17)

Name, Team	Avg.
J. Brose, Nooners	21.0
H. Dodeward, Nooners	20.0
P. Contreras, Mafia	20.0
P. Kuka, Trees	19.0
B. Lydum, ROTC	17.0
B. Ziel, Nooners	16.0
F. Barnes, Ch. Charlies	14.5
G. Boe, ROTC	13.5

SCHEDULE

Date	Teams	Time (p.m.)
Jan. 23	ROTC vs. Kelly's Killers	12:15
Jan. 23	Champagne Charlies vs. Probationers	1:10
Jan. 24	Goinkers vs. Nooners	12:15
Jan. 24	Huskies vs. Dukes	1:10
Jan. 27	Mafia vs. Trees	12:15
Jan. 27	Satellites vs. Fiftths	1:10
Jan. 28	ROTC vs. Fiftths	12:15
Jan. 28	Champagne Charlies vs. Trees	1:10

Al Phillips
THE CLEANER

15% Discount TO SU STUDENTS
Monday Thru Saturday
Week-end Specials
13th and E. Madison Plant Only

SUDDEN SERVICE

Diamonds Never Before Individually Owned or Worn

FRANK KIEFNER
512 Broadway N. FR. 4410
Across from the A. & P.
Member of K. of C. and St. Joseph's Parish

We Buy Direct from the cutters and are located out of the high-rent district. This results in 40% - 50% Savings to SU Students.

Just Arrived . . .
Contemporary Valentines

WILSON'S 1219 Madison
Near Campus and Marycrest
For Your Convenience — We Gift-Wrap and Mail Gifts

THE COTTAGE

PLENTY OF PARKING

JOE SHERIFF'S
Richfield Service

- BRAKES
- LUBRICATION
- LIGHT REPAIRS
- WHEEL BALANCING

11th and East Madison
(Across from Student Union Bldg.)

MIMEOGRAPHING
ECONO-LITH
Costs Less than Mimeographing
MULTILITHING

Alpha-Staunch
Direct Mail and Printing
1428-11th Ave. EA. 8118
10% DISCOUNT to
Seattle U. Students

McCann's Mens' Shop

SEMI-ANNUAL CLEARANCE
Starts Friday, January 24

DRASTIC REDUCTIONS
for
Quick Clearance

Reduced Items include
SPORTS COATS • SUITS • SLACKS • SWEATERS

Practically Anything for a Man

1629 Sixth Ave. ELiot 0227

Students Pledged

(Continued from Page 1)

Hondel, Shirley; Hopcraft, John; Hopkins, Doreen; Hopkins, Joan; Houlihan, Garth; Howard, James; Hrovat, Valerie; Hull, Sandra; Hungler, Marie; Huray, Mary; Ibsen, Don; Ibsen, Ronald; Irwin, JoAnn; Iverson, Nita; Jacoby, Claudia; James, Kathleen; Janiki, Veronica; Jansen, Kathleen; Jellison, Rosemary; Jensen, Sonya; Jergens, Jerald; Johnson, Dianne; Johnson, Richard; Johnston, Sandra; Jolin, Patricia; Jones, Nova; Jones, Robert; Kaiser, Mary; Kaiser, Vincent; Kauffer, Theresa; Kaufman, Gordon; Kearley, Mary A.; Kearney, Caroline; Kearns, Richard; Keene, Catherine; Kelly, Agnes; Kelly, John; Kelly, Nancy; Keough, Patrick; Kemp, Barbara; Kernan, Adrienne; Killen, Rosemary; King, Caroline; Kitts, Roberta; Klee, Karl; Kohler, Charles; Kohlman, Francis; Kohls, Mary; Kominski, Joann; Koreski, Roland; Kriewald, Westley; Ksamsant, Nitayasopark; Kubis, Corinne; Kuka, Paul; Kuntz, Nancy; LaBuda, Mary Grace; Laird, Sharon; Lakey, Eleanor; Langhelm, Maureen; Lara, Francisco; Larkin, Don; Larsen, Barbara; Larsen, David; Larsen, Richard B.; Law, David; Lawler, Judy; League, Nancy; Leath, Carol; Lechner, Connie; LeClair, Mary; Lee, Glenn; Lehnert, Mary; Ley, Geraldine; Lichtenwalner, Owen; Lindblam, Judy; Lindorfer, Elaine; Linek, Edwin; Livesay, Linda; Lorang, Les; Lycan, Robert; MacDonald, Bettie; MacIsaac, William; Maher, Arlene; Mahoney, Patrick; Mang, James; Manlowe, Linda; Manning, James; Marcon, Frances; Marshall, Betty; Marti, Vicki; Matheson, Robert; Mathiesen, Roy; Mathieson, Robert; Martin, Donna; Martin, Patrick; Matt, Joseph; Matthias, James; Matule, Antone; McAtee, Miles; McCabe, Grace; McCarthy, Michael; McClain, Patricia; McClarty, Joanne; McDermoth, Mary; McDonald, Gerald; McDonald, Patricia; McDonnell, John; McDonough, Moira; McFadden, Joan; McFarland, Carolyn; McGee, Mary; McGowan, Oneal J.; McGrath, Anne; McGroarty, Brenda; McLaughlin, John; McLellan, Donna; McLoughlin, Mary; McMaster, Joan; McMenamin, Maureen; McMinamin, Dennis; McMullen, Ralph; McNeill, Mary; McNerthney,

Mary; McNulty, Mary; McNulty, Patricia; McRae, Malcom; Medalla, Steven; Medeiros, Emmanuel; Meehan, Colleen; Meyer, Vicki; Michael, Miriam; Michelette, Joyce; Michell, Judith; Mikal, Edward; Miller, Gary; Miller, Janet; Miller, Sharon; Mills, Lora; Mobius, Joan; Mohr, Karen; Molitor, Patrick; Moloney, Kathleen; Molstad, Ralph; Monroe, Barbara; Morey, Barbara; Moriske, John; Morney, Sheila; Morrier, Joseph; Morrier, Paul; Moser, David; Most, Joseph; Mueller, Mary; Mullen, Michael; Mulvihill, Elizabeth; Murkowski, Gerald; Murphy, Dennis; Murray, Donald; Murray, Evelyn; Navel, Gary; Neff, Marjorie; Neupert, Madeline; Newman, Joyce L.; Nickerson, Judevine; Nilsen, Lora; Nishi, Peter; Nolan, Rosaleen; Nordby, Thomas; Norton, Carole; Notske, Robert; Nylund, Joyce; Nystrom, Edward; O'Brien, Bette; O'Brien, Mary; O'Brien, Mary; O'Connell, Jerry; O'Dowd, Barbara; Ogden, Donna; Ohashi, Ben; O'Hearn, Patrick; O'Hogan, Patrick; Olsen, Joanne; Olson, Charlotte; Olson, Judith; O'Neill, Carmen; O'Neill, Patrick; Orchard, Grace; Ordogh, Susanne; Orkiolla, Leon; O'Rourke, Joanne; Otis, Regina; O'Toole, Karen; Ott, Laverne; Owens, Joan; Owens, Mary; Owens, Thomas, Jr.; Panisko, Mary; Paolucci, Jacqueline; Park, Mary; Parsley, Sandra; Parson, Gall; Pasquan, John; Paulik, Beverly; Paulus, Kay; Pausch, Jerry; Pavelka, Pat; Pecchia, Donna;

(To Be Continued Next Week)

YOUR BARBER SHOP

5 Chairs—No Waiting
1532 BROADWAY (off Pine)

CLUB NEWS

SKI CLUB

A Ski Club meeting has been scheduled for Buhr Hall, in Room 410, on Thursday at 7:30 p.m. Members are asked to bring with them the \$3 fee for the ski trip on February 8-9. Movies will be shown at the meeting.

MU SIGMA

Mu Sigma, music honorary, will hold a work party at 9 a.m. this Saturday in the Little Theatre. This is a splendid opportunity for all those wishing to pledge to Mu Sigma to prove themselves as desirable members. Mu Sigma is the organization which engineers all of SU's musical productions, such as the Variety Show and operetta.

SPECS

Interested persons to work on the St. Patrick's Day Mixer committee are requested to contact co-chairmen Burke Harrell or De De Hopkins. This is a Junior Class project.

Students who are eligible to begin the course in medical record science at the hospital for the June class are requested to send in their application within the next two or three weeks.

'Youth to Brussels' Contest Entries Extended to Jan. 31

Contestants in the "Youth to Brussels" competition should be ready to submit their essays personally to the scholarship com-

mittee in the office of Rev. John Fitterer, S.J., Dean of Arts and Sciences, on Thursday and Friday, Jan. 30 and 31. The finalists and their alternates will be announced on Saturday, Feb. 1.

Noon Mass Set For SU Lounge

After a quarter of hard work, cutting red tape and much frustration, the main project of the planning committee of the Sodality has become an actuality. The Chieftain Lounge is now the site for the noon mass.

There are a few requests in regard to this major change. If you plan to receive communion, put your own host in the chalice BEFORE the Offertory (please don't receive unless you have done so). Since there will be no sitting, you will stand throughout the Mass except to kneel from the Sanctus to the Post Communion.

After receiving communion please move to the back so that others can easily receive. The Marian Committee leads a rosary immediately following the Mass, for which you are invited to stay. For those who aren't attending Mass, in the lounge itself or near the stairways to the lounge, there will be reminders to keep the noise down. Please be considerate!

The University will supply the school winners and their alternates with private tutoring in French.

The six-state winners will enjoy a six-month, all expense-paid stay in Belgium for the 1958 Brussels World Fair, as good-will ambassadors for the State of Washington. They will be paid a modest salary by the United States Government and the Washington State Department of Commerce and Economic Development.

Any last-minute entrants should submit their names to Fr. Fitterer as soon as possible.

Catholic Gift Headquarters
Kaufers Co.
1904 Fourth Ave.

FOR RENT
MADISON STREET THEATRE
Broadway & Madison. For particulars, call
T. V. DEAN
916 Minor Eliot 5595

The Latest in Eye Wear

- for • classroom
- casual date
- formal wear

Lenz Optical, Inc.

1211 MADISON
Two Blocks from Marycrest
FREE Adjustment at Any Time

Need An Auto Loan?



When you need quick cash on an auto—or for other personal reasons, go to **ECONOMY FINANCE CO.** (formerly Lee Loan Co.) For 31 years this Seattle-owned, State-regulated consumer finance company has given personal consideration, courtesy, and prompt service to all. Our NAME has changed—but everything else is the same!

For extra-fast service call in advance — MAin 2914.

ECONOMY FINANCE Co.

FORMERLY LEE LOAN CO.

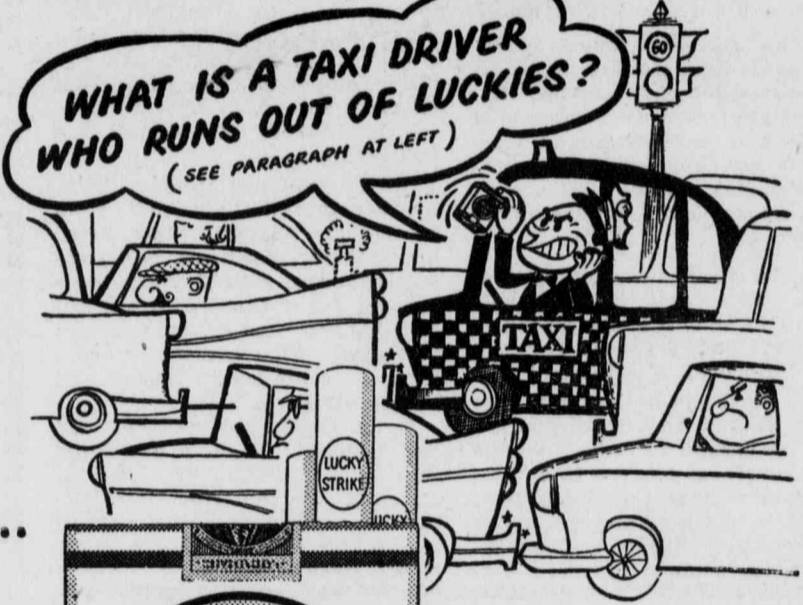
215 PINE STREET
MAin 2914

CLASSIFIED

ROOM AND BOARD. Newly decorated double-room. Television. Lunches. Rainier Valley district. Call Mrs. B. C. Finch, LA. 0167.

Sticklers!

TAXI DRIVING, at best, is a *checkered* career. Some days, nothing seems to click—including the meter! Traffic crawls, motor stalls, horns bleat, bumpers meet. What a moment to reach for a Lucky—and discover (horrors!) you're fresh out. That's when the most genial driver turns into a *Crabby Cabby*. And why not? He's missing the best taste going... a cigarette that's light as they come. Luckies are all light tobacco—good-tasting tobacco, toasted to taste even better. Try 'em yourself. And step on it!



DON'T JUST STAND THERE...

STICKLE! MAKE \$25

Sticklers are simple riddles with two-word rhyming answers. Both words must have the same number of syllables. (No drawings, please!) We'll shell out \$25 for all we use—and for hundreds that never see print. So send stacks of 'em with your name, address, college and class to Happy-Joe-Lucky, Box 67A, Mount Vernon, New York.

WHAT IS A DEFLATED DIRIGIBLE?

ARDIS ANDERSON, OREGON STATE *Limp Blimp*

WHAT IS A THIRD-BASE COACH?

ROBERT CLARK, U. OF OKLAHOMA *Slide Guide*

WHAT IS A TINY STORM?

RICHARD NIETHAMMER, U. OF COLORADO *Small Squall*



WHAT IS A GOOD-NATURED BARBER?

RICHARD GILLETTE, NEW PALTZ STATE TEACHERS COLL. *Chipper Clipper*

WHAT IS A KIDS' PLAYGROUND?

RAY FUKUI, U. OF CALIFORNIA *Tot Lot*

WHAT IS MASCARA?

WINNIE LEDGER, U. OF MICHIGAN *Eye Dye*

LIGHT UP A *light* SMOKE—LIGHT UP A LUCKY!