

4-18-1957

## Spectator 1957-04-18

Editors of The Spectator

Follow this and additional works at: <http://scholarworks.seattleu.edu/spectator>

---

### Recommended Citation

Editors of The Spectator, "Spectator 1957-04-18" (1957). *The Spectator*. 584.  
<http://scholarworks.seattleu.edu/spectator/584>

This Newspaper is brought to you for free and open access by ScholarWorks @ SeattleU. It has been accepted for inclusion in The Spectator by an authorized administrator of ScholarWorks @ SeattleU.

# Elections Draw Near; Petitions Released

Election rules and final plans for the ASSU, AWS and class office campaigns were mapped out at a meeting of the election co-ordinators last Monday night.

Don Willis, elections chairman, directed the confab of co-ordinators Sue Hohl, Ann O'Donnell, Fred Foy, Rico Parenti, Carol Gyrog and John Edwards.

The candidates picked up their petition and a list of election rules at the ASSU office on April 17. The nominations will be officially closed at 1 p.m. on April 23. The candidates and their campaign managers are requested to meet with the election co-ordinators at 1 p.m. in the conference room in the Student Union Building then.

Three voting booths will be open from 8 a.m. to 1 p.m. for the primaries on April 26. One booth will be located at the information booth in the Liberal Arts building. The two others will be placed in the Chieftain, to help speed the voting between classes.

The election rally, chairmaned by Fred Foy, is slated for the night of May 1. It will be held on campus, and its purpose is to give the candidates an opportunity to present their platforms to the student body.

Some of the election regulations stressed at the meeting of the co-ordinators included the rule that literature may be passed out only by the hand-to-hand method, and possible location for the campaign posters, as listed in the election rules.

The Judicial Board is in charge of the vote-counting chores.

The results of the primaries will

be posted as soon as they are tabulated. Final election results will be published in the SPECTATOR on May 3.

Commenting on the '57 elections, chairman Don Willis remarked: "We're hoping to make the elections this year an outstanding example of co-operation and good sportsmanship, even though the competition will be keen."

## Student Ticket Sale Over May 1

Only two more weeks left! May 1 is the deadline for the return of all drawing ticket sales. It is urged that everyone return either the books or money from sales as soon as possible to avoid last-minute confusion and the resulting overload of work on the part of the drawing committee.

These returns may be given to any of the committee members who include Jim Plastino, chairman; Lolly Michetti and Pat Dennehy, assistant chairmen; Barbara Murphy, chairman at Marycrest, and Cal Crow, chairman at Xavier. Returns may also be turned in to the booth in the Chieftain.

According to Jim Plastino, returns during the last week have been very light and he again urges anyone who is able to come to the booth in the Chieftain at 1 p.m. any day of the week except Friday. Teams will go to the downtown area and sell tickets in the office buildings.

The first prize, a 1957 Ford station wagon, is now on view in the Mall near the Liberal Arts Building. \$1,000 also goes to the first prize winner. \$500 will go to the second prize winner. Student salesmen are eligible to win the first prize of a console hi-fi or the second prize of a portable radio.

The drawing will be held May 4 at the annual banquet held in the Student Union Building.

## Scholarship Available

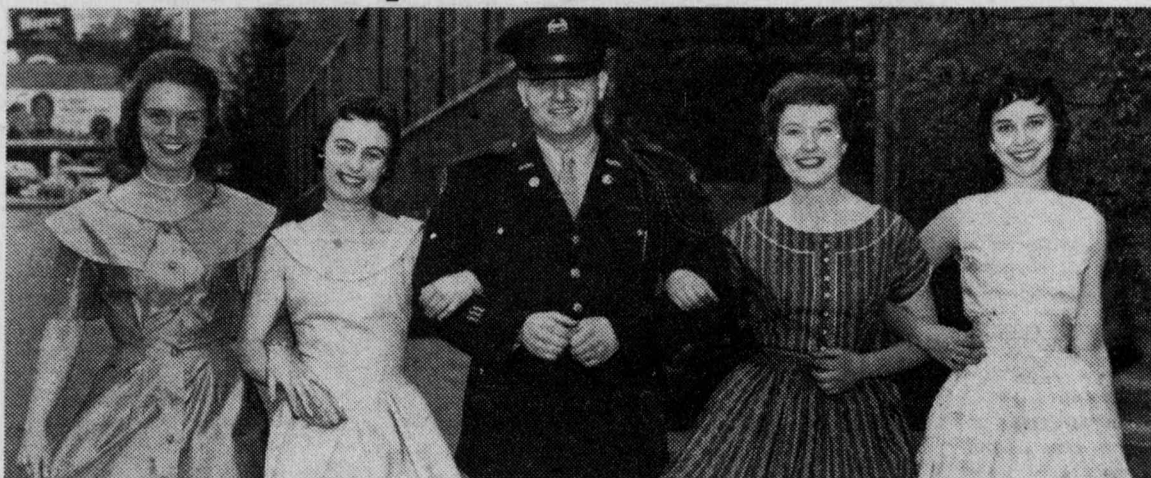
Several scholarships are being offered by the Naval Officers' Wives Club of Seattle to various colleges in the state of Washington. The scholarships are limited to Navy personnel or their sons and daughters. Students from Seattle University who are interested should write to Mrs. A. H. Roos, 5748 29th Ave. N.E., Seattle 5, Wash., giving their qualifications and reasons why they want a scholarship.

## AKP Opens Pledge Period

Alpha Kappa Psi, a national business fraternity for Commerce and Finance students, will begin their pledge period on Monday, April 22. Co-pledgmasters are Leo Costello and Tony Hoffman, assisted by committee members Bob Hacker, Harry Hungerbuhler and Larry Kramis.

Pledge period activities will consist of three consecutive pledge meetings to be held at 12 noon in Buhr Hall, Room 412, the first meeting being scheduled for Monday, April 22. All interested C&F students who would like to obtain more information concerning qualifications and duties involved in becoming a member of Alpha Kappa Psi should attend this first meeting, or else contact one of the above students or Prof. J. W. McLelland.

## ROTC Royal Court Chosen



ROTC COURT members, pictured above (l. to r.), Joan Parker, Anne Gribbon, Joan Petri, and Margery Barr are escorted by cadet Mark Horton.

This year's annual ROTC Military Ball royal court consists of Margery Barr, Anne Gribbon, Joan Parker and Joan Petri. These princesses were selected last week from a group of 14 co-eds.

Publicity Director Marc Horton disclosed that official announcement of the queen selected from the above group will be made April 25 in the Spectator. In addition to their other regal duties, the

royal four will appear twice on television. Channel 13 will host them on April 23 at 3 p.m. They will be guests on Channel 5 on April 25 at 1 p.m.

The Spanish Castle, located on the Seattle-Tacoma highway, will be the scene for the dance to be held on April 26 from 9 p.m. to midnight. Jerry Tucker's orchestra will furnish the music for the evening's dancing.

The following men with their

# SU Books Four Freshmen Quartet on Campus May 15

Announcement was made today by Pat Galbraith, ASSU vice president, that the Four Freshmen, nationally known singing quartet, will appear on the SU campus this Spring. The event is scheduled for Wednesday evening, May 15, at 8 p.m. Admission will be \$1.00 per person.

The Four Freshmen will appear at several other colleges on this Northwest college tour. On this, their first visit to the Northwest, the quartet will make only scheduled college appearances.

"Billboard" and "Downbeat" magazines rank this group as the number one singing quartet in the nation.

The Freshmen's recording of "Day by Day" has been acclaimed as the best known song of 1955. Other popular favorites include "It's a Blue World," "Graduation

Day," "You Stepped Out of a Dream," "Circus," and "I Remember You."

Among the more famous album recordings of this group are "Voices In Modern," "Freshmen Favorites," "Four Freshmen and Five Trombones," and one of their most recent albums, "Four Freshmen and Five Trumpets."

A program of supporting acts is in the making to feature with this highlighting group.

The Freshmen have been said to be a new advent in sound. Some maintain that their refreshing style in their delivery of close harmony will replace the barbershop music of the 20's. They are the original modern close harmony group and their style has been

imitated many times. The Hi-Lo's, who resemble this group, apparently developed their style from that of the Freshmen.

The ASSU office, in discussing this coming attraction, commented that SU's ability to book this group and a band of Les Brown's stature is prompted by the enthusiastic reception that our campus has given to such notables as Buddy Morrow and Claude Gordon on previous occasions.

ASSU Vice President Pat Galbraith stated, "By setting the admission at \$1.00, we hope that a capacity crowd will attend and prove that Seattle University can support big name attractions. We urge everyone to come and to bring their friends."



PREFECT NOEL BROWN places a medal on a new Sodality member while Fr. Francis Lindekugel, S.J., watches.

## Sodality Picks Pledges, Nominates '57 Officers

Nominations for Sodality offices, as well as the solemn reception of nearly seventy new members, highlighted the last general Sodality meeting held Sunday evening, April 14.

Those nominated include Noel Brown, Prefect; Ernie Mazei and Betty Petri, Vice Prefect; Felicia Bouker, Elizabeth Ciceri, Sally Kaufer and Sydel Kulczycki, Secretary; and Betty Kay Marshall, Mary Ann Short, and Dan Zimsen, Treasurer.

Final election and installation of officers is slated for the final general meeting of the quarter.

After addressing the prospective Sodality members, Rev. F. J. Lindekugel, S.J., Sodality moderator, blessed the medals and pins, which were then presented by the officers. The candidates then solemnly promised to abide by the Sodality rules, and made a solemn act of Consecration, after which they were officially received by the Director.

For the benefit of the new members, the various apostolic committees were described, and all Sodality members were asked to participate in one of them.

Spring Quarter plans of the Sodality include the annual May Procession and Crowning, to be held the second week in May, and con-

tinuation of the First Saturday Devotions and the Dialogue Mass every Saturday in the Student Chapel.

The next Day of Recollection for Sodality members on the first Sunday in May will be different from those in the past, and Sodality members are asked to watch the Catholic Action Bulletin for further information.

The special project for all Sodality members during the month of May is to encourage students to visit the grotto of Our Lady in front of the Liberal Arts Building.

## Band Concert Set April 28

April 28 is the date set for the annual Band Concert to be presented at 3 p.m. in the Student Lounge.

Thomas Rodrique is conductor. Featured in the program will be vocal selections by Peggy Jo Pasquier including Ardit's "Kiss Waltz."

The Band will present two movements from "American Symphonette" by Morton Gould; "Serenade" from "Student Prince;" "March" from "Suite for Band" by Holts; and familiar marches by Sousa.

A special attraction of the afternoon will be the performances of an original composition by Paul Chihara entitled "Composition for Brass Ensemble." Paul is a student at SU and a member of the Band.

Admission is free and the public is cordially invited to attend.

## Official Notice

Students planning to attend a school Summer Quarter should sign the list on the counter in the Registrar's Office signifying this intention. It is not necessary for students presently enrolled to fill out any form if they sign this list.

cadet rankings are handling all the arrangements for the ball: Lt. Col. Paul Mernaugh, general chairman; Sgt. 1/c. Santos Contreras, business manager; Lt. Col. Harold Cline, programs and invitations; Maj. David Morris, queen and court; Lt. Col. Hunter Haselton, decorations and policing; and M/Sgt. Horton, publicity.

The cadet precision drill team will form a guard of honor for the reigning queen and her royal court.



President's Message

SU spring building fund

Each Spring, we, the Student Body, are called upon to further the S.U. building project by participating in the Spring Fund Drive.

The participation of each and every student is most vital to the success of this most important undertaking. The advancement of Seattle U.'s educational facilities is of interest to the attending students and to future students.

This matter is strictly personal in nature for each one realizes how much he can contribute in money, and even more important, in time.

The faculty and student heads of the drive this Spring have taken great care in selecting valuable prizes and in providing that added incentive for the individual. In examining many fund-raising methods, we have found that there are few that surpass that of ours at S.U. The largest Catholic college on the Pacific Coast requires a large yearly budget. Still the tuition at SU is far less than that of other Catholic universities on the West Coast. The building program has placed a great debt on our shoulders. The advantages of this program we see even now in the new dormitories, the Engineering Building and the Chieftain. Each day we see further progress on the new Commerce and Finance Building, and each one of us observes this with more than a passing interest.

The continuation of the program must be supported by you, as an SU student. The value of your Catholic education is a matter that most certainly involves actual deficits.

There is no doubt that the students from SU will reach the goal set for them because they themselves see the necessity of a successful drive. Those who are interested in the advancement of Catholic education will soon see the attitudes of the students themselves expressed in the results of the drive.

—BOB MARTIN.

Think :

The other side • OAKIE OAKSMITH

BOOKSTORE

In this column last week there appeared an article listing the popular grievances held by some of the students concerning the Broadway Bookstore. A few days after that article appeared I received an invitation to visit the establishment to see and hear the other side of the story. The result of this visit was a realization of some of the problems that they are confronted with along with the assurance that they are constantly working to give their clientele better service at a reduced cost.

JESUIT ADMINISTRATION

The Broadway Bookstore is owned and operated by *Seattlensis Universitas* and all its employees are salaried.

Any profits realized from this venture are deposited in the Building Fund as donation of the students of Seattle U.

USED BOOKS

Up to this time the Bookstore has had great difficulty in obtaining a selection of good used books

'Famous Sayings'

• JOAN HATCHELL

"Famous Sayings" really doesn't have a winner this time. But contrary to a report in the *Spectator's* April 1st edition, people have not been caught stuffing the ballot box.

Since no one has correctly answered these quotes, two hamburgers and two malts from the *Maryland Freeze* will be added to this week's prize of tickets for two to the *Venetian Theater*. The *Venetian* is currently featuring "Lust for Life."

New quotations are:

- 1.) "What fools these mortals be."
- 2.) "The female of the species is more deadly than the male."
- 3.) "How do I love thee, let me count the ways."
- 4.) "Render unto Caesar the things that are Caesar's."
- 5.) "Neither a borrower or a lender be."

- 1.) Kipling
- 2.) Shakespeare
- 3.) New Testament
- 4.) Elizabeth Barrett Browning

Match the quotation to the author and turn your entry in to the *Spectator* office. All blanks must be in by 12 noon, April 12.

The author can apply to more than one quotation.

due to the fact that the Eastern firms dealing in them send only the most tattered to the West unless they are selected by a buyer from their stacks. This year they will have a buyer to select these books for them if the instructors select the texts that they wish to use the following quarter sufficiently in advance. Most bookstores receive this information six months in advance. At S.U. it is usually one and a half months. It would be a boon to the students if the instructors would make their selections early.

BETTER RESALE PROMISED

It has been promised that if students will sell their used books (in good condition) on the last two days of each quarter, thus getting them on the shelves in time for the next quarter, they can expect better prices, e.g., if a clean unmarked (no underlining of cribbing) book which originally cost \$7.00 is returned on one of these days, you will receive \$4.50 rather than the previous 50% for it, and it will go back on the shelf at \$6.00. Remember, on days of finals you can reclaim 65% rather than 50% on clean used books.

CONGRATULATIONS

You probably noticed on the front page of the *Spec* last week that Noel Brown has been elected to lead the Federation of Northwest Catholic College Students for the next year.

Reviewing the past year and wonderful job that Noel has done with the Sodality, it is evident that he possesses the drive to make this into a dynamic organization. It may be that it is a president like this that the Federation has been lacking in the past.

"Up to this time," stated Al Krebs, the Federation's publicity director, "The conventions have been nothing more than a confessional, and Seattle U. the priest!" The smaller schools would bring petty problems to the conventions and ask us for solutions.

A closer association among the seven member schools during the interim between conventions will enable them to clean up small problems and devote discussion at the conventions toward the solution of major problems of importance to all the schools.

This will then be the type of Federation that will most benefit S.U. and at the same time enable us to help other schools. This is Noel's chance to make the Confederation of Northwest Catholic College Students a significant force with both student body and academic administrations.

... PORTZEBIE ...

Campus Politics

Campaigning by rules and regulations

• AL KREBS

One of the most important and probably the most unsung personality in a political campaign is the campaign manager.

Not only must this individual be politically minded in order to do an effective job but he must also serve as a confessor, advisor, tub-thumper, salesman, treasurer, general handy man, trouble shooter and sometimes lawyer for his candidate. A manager who does not have the confidence of his man in these matters might as well jump out of a window.

For Maurice "Oakie" Oaksmith, his affairs in the coming elections will be handled by Jim Murphy. Murphy is no stranger to ASSU presidency races as in 1955 he helped direct the campaign of Mike Weber who was unsuccessful in his bid for the post won by Jim Ray.

In last year's memorable student body president's campaign Murphy brilliantly handled the activities of Jim Plastino although the latter was beaten in the finals by the lesser known Bob Martin who captured a greater majority of the student vote.

For the other candidate in the year's race, Pat Galbraith, his managerial reigns are being handled by Mary Ann Onorato and Maurice Galbraith. Both individuals have outstanding records in campaigning in the SU campus.

In the other races several of the candidates are still undecided over their manager although Santos Contreras, ASSU vice-presidential candidate has stated that he will team with Bob Bruck in carrying on his campaign.

Only other candidate to state definitely his choice of campaign managers is Paul Turner who will be handled by Xavier Hall president Cal Crow. Turner is running for ASSU publicity director.

In an effort to encourage and to keep the student body well-informed in their government "Campus Politics" this week lists the duties and requirements for the many offices to be decided May 2.

ASSU President

**Requirements:** A candidate for the presidency at the time of the regular Spring elections must be an undergraduate student with 123 credits completed at the end of the Winter Quarter.

**Duties:** He shall preside at all meetings of the ASSU and shall be an ex-officio member of all temporary and special committees which he has appointed and which are not subject to the Assembly Board. He shall be the official representative of the ASSU. He shall make all appointments, subject to the approval of the Student Assembly, to chairmanships of all special activities under the control of the ASSU.

ASSU Vice-President

**Requirements:** A candidate for the vice-president at the time of the regular Spring elections must be an undergraduate with 78 credits completed at the end of the Winter Quarter.

**Duties:** He shall assume the duties of the president during the temporary absence of that officer. He shall serve in the capacity of president of the Student Assembly

The sun shone down upon the place  
And on the road, and on His face  
And Spring bloomed forth in full array

To honor Him along His way.  
  
But soon the Spring would be no more  
To brighten up the path before.  
As Spring to Winter, love to hate,  
Palms once bedecked the city's gate.

Then love like Spring did fade and die.  
A solemn cross stood in the sky.  
And there He died where all could see,  
For love of us—humanity.

and chairman of Activities Board.

ASSU Secretary

**Requirements:** A candidate for the position of secretary at the time of the regular Spring elections must be an undergraduate student with 78 credits completed.

**Duties:** The secretary shall keep records of all proceedings of the ASSU, the Student Assembly and the Activities Board and shall be the custodian of all records belonging to the ASSU.

ASSU Treasurer

**Requirements:** A candidate for the treasurer at the time of the regular Spring elections must be an undergraduate with 78 credits completed.

**Duties:** The treasurer shall receive and disburse all funds of the ASSU. He shall keep a record of receipts and disbursements and shall have such records available at all times for accounting to the ASSU. The treasurer shall be chairman and member with full voting power on the Financial Board.

ASSU Publicity Director

**Requirements.** A candidate for the publicity director's office at the time of the regular Spring elections must be an undergraduate with 33 credits completed

**Duties:** The publicity director shall be responsible for regulating all on-campus publicity for the ASSU activities. He shall preserve according to Robert's Rules, order at all meetings of the ASSU, the Assembly Board, and the Activities Board. He shall be responsible for the publicity of the ASSU meetings and all general and special elections for any purpose called.

AWS President

**Requirements:** A candidate for the presidency at the time of the regular Spring elections must be an undergraduate student with 120 credits at the commencement of the quarter.

**Duties:** The president will preside at all meetings of the AWS and shall be ex-officio member of all temporary and special committees which she has appointed. She shall be the official representative of the AWS and shall make all appointments to chairmanships under the control of the AWS.

AWS Vice-President

**Requirements:** A candidate for the vice-presidency at the time of the regular spring elections must be an undergraduate student with 80 credits at the end of the quarter in which she is nominated.

**Duties:** She shall assume the duties of the president during the temporary absence of that officer. She shall serve as chairman of the Fund-Raising Council and co-ordinator of all AWS activities.

AWS Secretary

**Requirements:** A candidate for the secretary's office at the time of the regular spring elections must be an undergraduate student with 80 credits at the end of the quarter in which she is nominated.

**Duties:** The secretary shall keep records of all proceedings of the AWS and the AWS Cabinet. She shall be the custodian of all records belonging to the AWS including the scrapbook and files. She shall act as correspondent.

AWS Treasurer

**Requirements:** A candidate for the office of treasurer at the time of the spring elections must be an undergraduate student with 80 credits at the end of the quarter in which she is nominated.

**Duties:** The treasurer shall keep the financial records of the AWS. She shall submit a quarterly financial report and shall sign all student financial estimates as business manager.

Senior Class Officers

**Requirements:** Must have completed 123 credit hours.

**Duties:** To govern and organize the Senior Class.

Junior Class Officers

**Requirements:** Must have completed 78 credit hours.

**Duties:** To govern and organize the Junior Class.

Sophomore Class Officers

**Requirements:** Must have completed 33 credit hours.

**Duties:** To govern and organize the Sophomore Class.

One of the haziest races in recent years is beginning to shape in the Associated Women Students' association as "Campus Politics" has learned exclusively that Pat Dennehy, long time a question mark, has decided to run for the president's position. On the other hand another question mark, Miss Helen Hoolahan, has also stated exclusively to this column that she definitely will not run for AWS's top post.

Other candidates that have been "suggested" for the job are Miss Mary Ann Onorato, Joan Bailey and Lynn O'Neil. Next week should be the crucial period in this important race with something more positive coming forth than vague shrugs and "no comments."

CAMPAIGN CHATTER — The ASSU treasurer's post may have some stiff competition this year as Dave Poisson and Bill McMenamin have been rumored for the position. . . . Candidates are reminded that petitions can be picked up in the ASSU office starting today and can be turned on April 22 and 23. . . . Pressure is being applied to a certain sophomore coed into running for the ASSU secretary's position as the group feels the office needs another redhead. Only women are allowed to sign the petitions for those women running for AWS offices.

Holy week

• SYDNEE VOLTIN

Christ the Lord is risen today!

These words traditionally are connected with Easter Sunday, but before this event can properly be celebrated there must be a great deal of preparation. The six weeks previous to Easter probably are among the most important of the entire liturgical year since they are spent in preparation for the most beautiful, magnificent, and awe-inspiring event in history — the resurrection of Christ. This single event redeemed the entire world for all time. Is it, therefore, not fitting that we should give some thought to the event which made us eligible to share for all eternity in Christ's life?

True, Lent, in its entirety, is to be a time of spiritual preparation and personal sanctification. This effort should be intensified during the last week before Easter— Holy Week.

This week is Holy Week; a time when we should be thinking of matters spiritual, not worldly.

Christ, on Holy Thursday spent the entire night on His knees in prayer—for all of us. His disciples could not even "watch one hour" with Him. At the time when they should have been most wakeful, they slumbered; at the time when they should have been praying, they did nothing.

It was on this day that Christ instituted the Blessed Sacrament; the day when he gave the world His flesh and blood to feed their spiritually dead souls. This he did at the Last Supper. This is a sacrament—one way in which we may share in things divine with Christ.

The institution of this one sacrament alone makes Holy Week important. But at the same time, he instituted Holy Orders—the priesthood, for the clergy were to be the ones who would pass on this divine sacrament to all the world.

Should you be invited to a formal dance, you wouldn't dream of going in jeans, and you would spend a lot of time preparing for it. One should therefore, be ready and willing to spend even more time preparing for the greatest "date" of all time, your date with God.

When Easter comes, be happy: rejoice, but remember to properly celebrate it you must prepare and the time for preparing is now.



AROUND TOWN:

Festival of art and Kenton

On May 5, the events include the Cornish Junior Symphony concert and Northwest Jazz Workshop concert. There will be four groups scheduled from the workshop; this will include the Paul Nebes Trio and three other well-known, local groups.

The program for May 6 includes the Seattle Philharmonic and the Choral Society. A complimentary concert will be conducted at the Nathan Eckstein Junior High School.

There are a variety of events scheduled for May 7 and 8. Among these are performances of Mozart's "The Magic Flute," by the Opera Theater of the University of Washington. The performance will be given at Meany Hall.

Also scheduled on the evenings of May 7 and 8 are screen premieres of the French film, "Diary of a Country Priest," and a Japanese production, "The Magnificent Seven." These films are offered for entertainment by the Seattle Cinema Guild and the Fine Arts Guild, Inc.

On May 8 only, the Taylor String Quartet will present a chamber-music concert at Cornish Theater.

Two unique events are on the agenda for May 9. The Seattle Art Museum will sponsor an architectural tour. The University of Washington will organize a Northwest Indian costume parade. The program will also include Indian dances by Bill Halm and his company.

On May 10, the Northwest poets are expected to read their selections at Eagleson Hall.

ARTS—Through the courtesy of the local merchants, galleries have been arranged in the space provided by them. Every museum and every gallery will be featured in stores all over the city of Seattle.

Downtown exhibitors will include the Bon Marche, Frederick & Nelson, Hathaway House, I. Magnin & Co., the Majestic Furniture, and the Palomar Theater.

Woessner Fiellery and the Hiawatha Woodhouse and the Ridgemont Theater will present exhibits in the other sections of the city.

ON THE SIDE: The Associated Women Students of the University of Washington is presenting another one of its excellent top-billed concerts April 24, 3:00 p.m. in the Hub Ballroom.

The Stan Kenton All-Stars, a progressive or modern jazz group from the Stan Kenton School of Music, include Pete Jolly, a 21-year-old pianist, Sammy Criss, an alto saxophonist, and Jack Montrose, a tenor saxophonist. Other members of the group are Bob Berteau and Bob Neal. Donna Fuller is feature soloist.

The admission fee is \$1.00.

• DEE DEE HOPKINS

Seattle University Spectator

Official publication of the Associated Students of Seattle University. Published weekly on Thursdays during the school year. Editorial and business offices at Student Union Building, 11th and Spring St., Seattle 22, Wash. Subscription rates, \$1.50 per year. Entered as third class matter.

Editor-in-Chief  
ANN O'DONNELL

Sports Editor.....Don Harris  
News Editor.....Sonja Vukov  
Associate Editors.....Judith McManus, Don Wright  
Feature Editor.....Judith McManus  
Associate Feature Editor.....Doreen Hopkins  
Copy Editor.....Gail Delworth  
Picture Editor.....Lois Whiteside

MODERATOR.....Rev. Fred P. Harrison, S.J.  
PHOTOGRAPHER.....Jon Arnt  
Business Manager.....Marion Sullivan  
Local Advertising Manager.....Dennis Elbert

GIFTS

On Your Way Down Madison . . .  
Stop at your By-the-Campus Gift Center

- GREETING CARDS
- INFANTS' WEAR
- GIFTS AND JEWELRY

**WILSON'S** 1219 Madison  
Near Campus and Marycrest  
For Your Convenience — We Gift-Wrap and Mail Gifts

Element behind operetta

As "Song of Norway" goes into production, the element behind the Operetta comes clearly into focus. Mu Sigma, Seattle University's music honorary, has the entire job of presenting the show. Have you ever wondered who sets the Memorial Gym up for a show—or who puts everything in shape again the morning after? — it's Mu Sigma. Staging, costumes, lighting, publicity and programs are all ably handled by the club. The purpose of the honorary is to act in conjunction with the Music Department. Mu Sigma supplies the production staff for all department programs.

Mu Sigma has announced fifteen new pledges to the Music Honorary: Bernice Baumgartner, Janice Morgan, Tom Lambert, Jack Hill, John Broell, Mary Jo Paradis, Sue Vivolo, Carol Leath, Joan Warner, Ron Gallucci, Jeanne Bramble, Bill McMenamin and Pat McNulty.

The pledges were chosen for their interest and help in previous music productions this year. The only pledge group of the year was notified of their selection by letter. Spending a pledge period, they will be formally initiated in the Fall of 1957.

Drawing for membership on persons interested in music or theater, Mu Sigma does not boast one Music Major.

Club officers newly elected for the 1957-58 year are: President, Ron Bentz; Vice President, Mau-

reen Cain; Secretary, Jo Anne Carey; Treasurer, Bob Coombs; Publicity Director, Pat Martin. Other members are: Barbara Cole, Cal Crow, Joan Hatchell, Julie Hovind, Patty Ivers, John Vhay, Fred Lanouette, Len Lynch, Cathy Lytle, Sandy Pinsonneault, Ron Sailer and Charley Schaaf.

Special Rates to Faculty and Students

**5 POINT CLEANERS**

Satisfaction Guaranteed

Next to Chieftain Cafe      Broadway at Madison



How to make the most  
of your engineering career  
ONE OF A SERIES

go where  
engineers are free to do  
creative work

One of the things that irks engineers most, surveys show, is getting burdened with dull, routine chores. This takes the fun out of engineering, and slows you down.

You'll be ahead, therefore, if you select a company that helps you avoid this kind of career impediment.

Take Boeing, for instance. Boeing frees engineers for creative assignments by hiring engineering aides and draftsmen to handle routine jobs. Boeing engineers concentrate on engineering.

Another point: you'll find excitement aplenty at Boeing, working with men who are literally writing the book in the field of long-range jet-powered aircraft. You'll work on such projects as advanced civil and military jet airplanes, the supersonic BOMARC guided missile weapon system, and top-secret research programs.

Boeing's rapid, steady growth assures constant opportunities for advancement—and career stability. You'll enjoy a high starting salary, and benefits that include retirement plans and a company-paid graduate study program. There are long-range Boeing openings for engineers and scientists of ALL types, and for mathematicians and physicists. It'll pay you to look into these opportunities now!

NOW is the time to start planning ahead.  
Consult your Placement Office, or write:

JOHN C. SANDERS  
Engineering Personnel Administrator  
Boeing Airplane Co., Seattle 24, Washington

FRED B. WALLACE,  
Chief Personnel Engineer  
Boeing Airplane Co., Wichita 1, Kansas

**BOEING**  
Aviation leadership since 1916  
Seattle, Washington   Wichita, Kansas   Melbourne, Florida

Styles for Easter

Matching skirts and blouses

Easter Hats

**Terry Avenue Gown Shop**

1012 MADISON

Close to Your Campus

**JOE SHERIFF'S**

**Richfield Service**

- BRAKES
- LUBRICATION
- LIGHT REPAIRS
- WHEEL BALANCING

11th and East Madison

(Across from Student Union Bldg.)

**The Latest in Eye Wear**

for • classroom

• casual date

• formal wear

**Lenz Optical, Inc.**

1211 MADISON

Two Blocks from Marycrest

FREE Adjustment at Any Time



# Linksmen Play UW Today; Now Hold No-Defeat Crown

SU golf-men added several more victories to their no-defeat schedule as they downed College of Puget Sound, 15-0, and Western Washington, 15-0.

Today, April 18, the Chiefs go against the University of Washington at Inglewood at 1 p.m. On April 22 the Chiefs will host Gonzaga at Inglewood, also at 1 p.m.

Led by Canadian Gordon MacKenzie with one under par 72, the linksmen shut out Western Washington with an easy victory. Other members of the squad who took

three points apiece were Dick Madsack, Mike Hunt, Dale Lingenbrink and Dan Barkley.

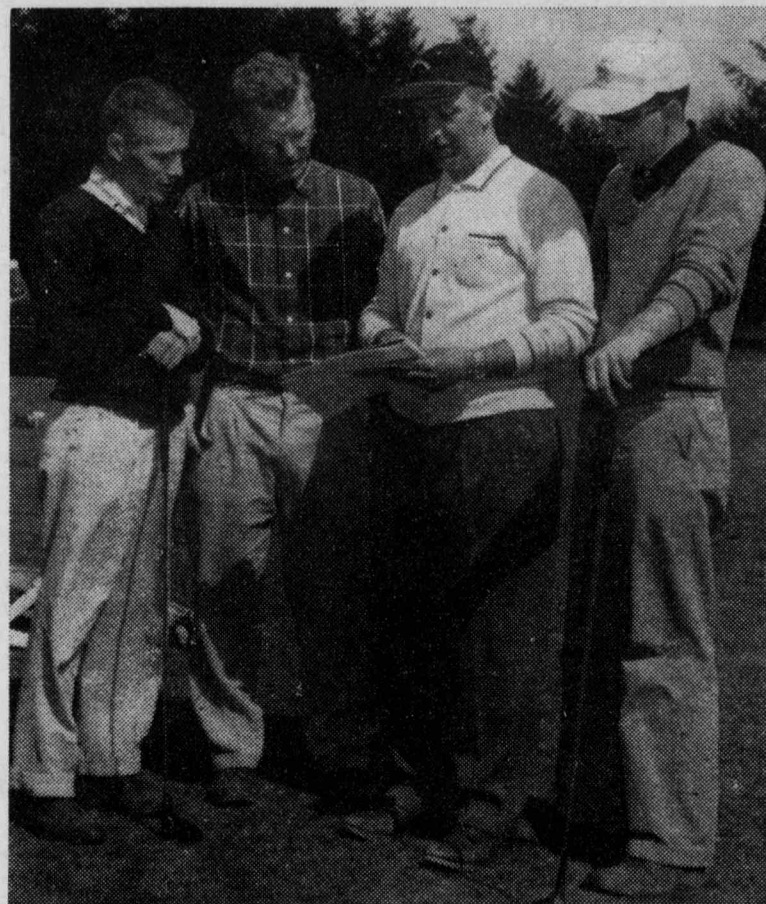
In the play with College of Puget Sound, Dale Lingenbrink led the Chiefs around Inglewood with a par 73. Barkley, MacKenzie, Madsack and Hunt each took three points.

MacKenzie, a 21-year-old senior, leads the team with an eight-under-par 72 for the total play this season. According to Coach Tom Page, SU will attempt to enter Gordon in the National Collegiate

Athletic Association tournament in Colorado Springs in June. But because he played several varsity matches during his freshman year and according to NCAA rules a man is allowed only three years of varsity play, an attempt to secure a waiver must be made. This will be attempted on the grounds that SU had no freshman squad at that time.

Also in the future for the green-men is the Northern California Intercollegiate Tournament in Santa Cruz on April 25 to 27. Last year the Chiefs came in second behind Fresno State with 303 strokes. MacKenzie won the 10th annual individual championship and will be defending his title.

**GOLF COACH Tom Page** maps strategy with three of his top golfers: (l-r.) Bob Bruck, Dale Lingenbrink, Page and Gordon MacKenzie.

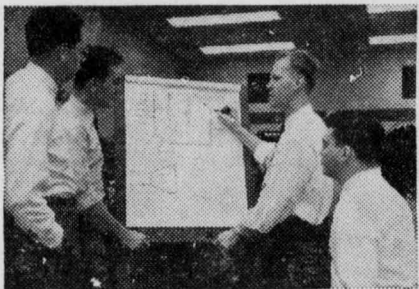


**Fast, Quality Service**  
**MASTER CLEANERS**  
Discounts to Seattle U. Students  
1209 MADISON Formals a Specialty



"I joined IBM for two clear-cut reasons," recalls Bob. "First, the tremendous company growth obviously offered every chance for advancement. Second, the work area was exactly what I was looking for—transistors and their application to computer systems."

Bob entered IBM's voluntary training program in June, 1955, where he studied the entire organization, its divisions and diversified products. He received technical training in computer logic, programming, and components such as transistors, cores and tapes. By September, half his day was being devoted to an actual project; by the following March, he was on this project full time. "Our job was



The "small-group" approach to research

to transistorize six servo-amplifiers for the MA-2 bombing-navigational system," he recalls, "and we completed the project in April."

In IBM Research (as in all IBM) Bob works in a small group. "Our team consists of three E.E.'s and a technician. We start with analysis and synthesis work involving math and systems logic. Then we use the 'black box' approach." His group splits up occasionally to research special phases of a project but reunites in frequent sessions to coordinate activities.

#### Promoted to Associate Engineer

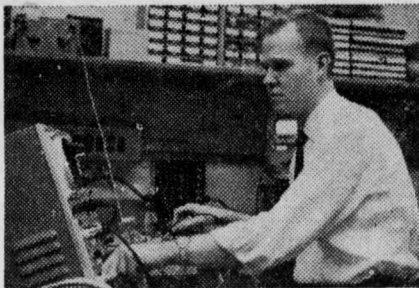
In August, 1956, Bob was made an Associate Engineer. From April of the same year, he had been working on a new Government project. This was "to design and develop a transistorized radar data presentation system for the MA-2 system." Basically, this was a research program in sample data theory and the develop-

## "What's it like to be A RESEARCH ENGINEER AT IBM?"

Two years ago, college senior Robert Thorpe asked himself this question as he worked toward his E.E. at the University of Toledo. Today, an Associate Engineer in the Applied Logic Group of IBM Research, Bob reviews his experiences and gives some pointers that may be helpful to you in taking the first, most important step in your career.

ment of a system containing both analog and digital components. Bob still works on this project—toward a completion date of April, 1957.

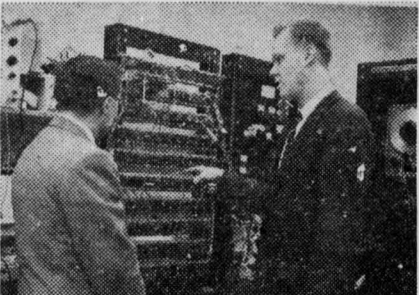
Shortly after this program started, Bob joined the Applied Logic Group.



Plotting transistor characteristics

Here, he was concerned with research in new areas of computer technology—for example, cryogenics and high-speed memories. Bob studies systems which operate on "real time," and his immediate problem is to analyze and synthesize closed-loop sample data systems for the control of complex data processing.

Asked what his most interesting assignment was, Bob replied, "My



New areas of computer technology

work on a digital-to-analog converter with a high degree of sensitivity and accuracy. This strictly electronic converter, with transistors, combines both digital and analog circuitry. It was a tough problem, and a fascinating one."

#### What does the future hold?

At the present time, after two years in IBM Research, Bob is more than enthusiastic about his future. He plans to continue in systems study and to develop "a more sophisticated approach." Two lines of advancement are open to him: to Project Engineer,

the administrative side, or to Staff Engineer, the technical side of Research. "Either way, I'm sure I'll get ahead," Bob feels. "Electronics research is really on the move at IBM. We have about 600 people at Poughkeepsie now, as against 56 in 1950. We'll need some 1,700 before 1960 to help staff a new research laboratory at Yorktown Heights, Westchester County, N. Y."

What does he like best about IBM? Probably the fact that he's so much "on his own." "There's no 'over-the-shoulder' supervision," he says. "You schedule your own program and create your own 'pressure.' And, if you



Promoted in fourteen months

feel the need for more education, IBM provides every facility for continued study. Besides the voluntary training programs, there are excellent afterhours courses offered by the IBM Department of Education. And you have a chance to work toward advanced degrees—at IBM expense."

IBM hopes this message will give you some idea of what it's like to be an E.E. in Research at IBM. There are equal opportunities for E.E.'s, I.E.'s, M.E.'s, physicists, mathematicians, Liberal Arts majors, and Business Administration graduates in IBM's many divisions—Product Development, Manufacturing Engineering, Sales and Sales Assistance. Why not drop in and discuss IBM with your Placement Director? He can supply our brochure and tell you when IBM will next interview on your campus. Meanwhile, our Manager of Engineering Recruitment, R. A. Whitehorse, will be happy to answer your questions. Just write him at IBM Corp., Room II 804, 590 Madison Ave., New York 22, N. Y.

**IBM**

INTERNATIONAL  
BUSINESS MACHINES  
CORPORATION

## Cadets Capture ROTC Tourney

The SU ROTC Cadets won the University of Washington Invitational ROTC Tournament for the second consecutive year by defeating the UW Naval ROTC, 50-46, in the final championship game played in the SU Gym last Thursday evening. Both teams entered the final game of the double elimination tournament tied, each having previously defeated the other.

The SU team, playing hard, aggressive ball, jumped off to a 10-4 lead, and left the floor at half-time leading, 32-17. Playing cautiously in the second half, the Cadets maintained a 10-point lead until well into the fourth quarter and with the reserves finishing out the game, the Navy managed to close to within 4 points.

Scoring for the SU team was well-distributed. Gary Miller and Ed Kelly had 12, Bob Lydum 11, Gene Boé 10, and Jim Connors 5. High for the Navy was Ralph Vanni with 17.

Selected as the most valuable player of the tournament was Ralph Vanni of the UW Naval ROTC. The All-Tournament team, selected by the coaches, includes Gary Miller, Bob Lydum and Ed Kelly, Seattle U; Ralph Vanni, UW Navy, and Bob Pederson, US Air Force.

Patronize Our Advertisers!



Want cash for a car or other personal needs? You can get it at LEE LOAN, your State-regulated consumer finance company—just as thousands of others have in the past 30 years in Seattle. Personal consideration, prompt, courteous attention always, at this friendly, convenient downtown office. For extra-fast service call in advance—MAin 2914.

Hours: Mon. 9 to 8, Tues. thru Fri. 9 to 5:15, Sat. 9 to 12 Noon

**LEE Loan Co.**

\* 222 DOUGLAS BUILDING \*  
4th & UNION \* MA. 2914



# Seattle Chiefs Split Bill With Washington Huskies

The "Power Pak" of Seattle University bats was too much for four Husky pitchers as the Chiefs pounded out 17 hits to beat their cross-town rivals, 14-2, at Graves Field on the University of Washington campus Monday afternoon.

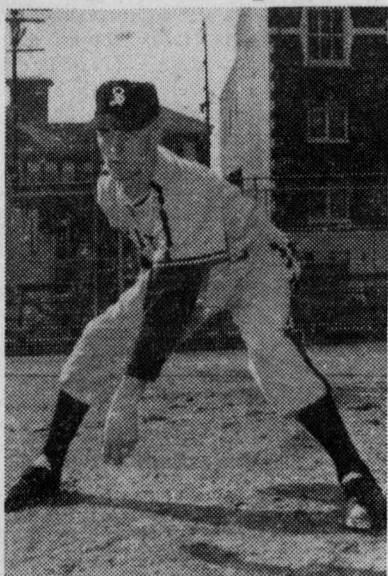
First-sacker Gary Schaab and freshman third-baseman Don Piasecki led Chieftain sluggers with four hits in six trips to the plate, plus knocking in four runs apiece.

Other Chiefs contributing to the "hit parade" were Gary Pennington with two hits; Frank Barnes picked up three hits, while Maury Galbraith and Denny Murphy each picked up one hit. Murphy pounded out a double in his only hit of the game.

Pitching his third win of the season, pitcher Maury Galbraith limited the Huskies to seven hits. A homerun by Ray Christianson which was blasted over the fence in deep center-field in the sixth was the biggest hit of the day off Galbraith. The ace of the Seattle U mound staff struck out ten and allowed only six bases on balls.

## KRITSONIS SLOWS CHIEFS

George Kritsonis, ex - chieftain hurler who deserted the ranks of the Chieftain tribe to enter the School of Forestry at the University of Washington and who is reputed to be the best pitcher in the Northwest area, silenced the Broadway Bombers' bats; allowing them but seven scattered hits to



PAUL DEMPSEY

beat Seattle U, 2-0, at Graves Field Tuesday. Kritsonis contributed to winning his own game by blasting out a double and a triple.

Seattle U picked up seven hits, but due to some sloppy base-running was unable to put a run across home plate, as they went down in defeat for the second time this season.

Gary Pennington and Frank Barnes hit safely twice in four times at bat. Other Chieftains picking up base-hits were Tom

Trautman, Denny Murphy and Gary Schaab, with one each.

Little Bobby McGruder pitched four-hit ball, striking out six and walking two opposing batters. Husky pitcher George Kritsonis struck out 14 and issued two free passes to first base.

The next meeting between the two schools will take place at Sick's Seattle Stadium in a night twin-bill on May 13.

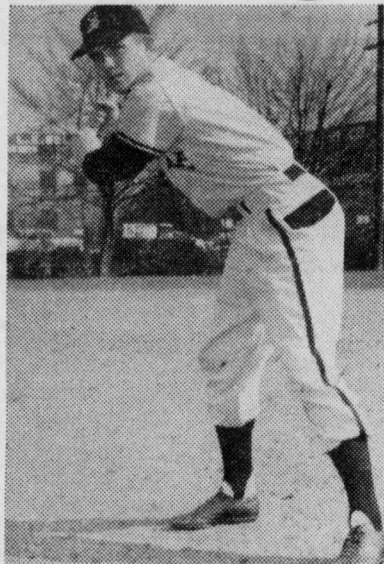
Coach Faccone will take his team to Wenatchee for a three-game slate with the Wenatchee Chiefs over Easter week end, returning to host Pacific Lutheran College at Broadway Playfield on Tuesday, April 23. Starting time is set for 1:30 p.m.

## GAME RECAP

Central Washington Wildcats put together a tremendous display of hitting and scoring power in the first game of a scheduled twin-bill to beat the previously undefeated Seattle University Chieftains at Ellensburg last Wednesday.

The Wildcats bombed the Chieftain pitchers—starter Bob Simmons, Bob McGruder, Del Michaelson and Paul Dempsey—for a total of 17 hits and 17 runs. Del Michaelson was credited with the loss.

Coach Joe Faccone's squad made a valiant attempt to win the game in a seventh-inning rally but were unable to overcome a nine-run deficit which was present in the top



JIM HARNEY

half of the sixth inning.

Frank Barnes, the sensational freshman shortstop who hits the ball like he owns it, came through with four hits in five trips to the plate, plus two runs. Jim Harney, the handy-andy of the Chieftain squad; Gary Pennington, slugger

de luxe; and Denny Murphy, veteran outfielder, each picked up two singles.

In the second game, Central threw everything against the Chiefs, who weren't to be denied, as they supported the five-hit pitching of Maury Galbraith with 15 hits and 14 runs to drop the Wildcats, 14-0, in the nightcap.

Don Piasecki had a "big four" performance at the plate, hitting safely in four times at bat, picking up four runs and adding four RBI's (runs batted in) to his record.

Frank Barnes added four hits in five trips to the plate to bring his total for the day to eight hits in ten times at bat, including a triple, a double and six singles.

Other hard-hitting Chiefs were Tom Trautman, who picked up three hits in four trips to the plate, plus three runs and three RBI's; Gary Schaab, the big Chieftain first-sacker, hit safely twice in five times at bat and collected three runs.

Pitcher Maury Galbraith allowed only five hits, as good defensive play prevented the Wildcats from scoring. He struck out 18 batters and allowed four bases on balls.

# Tennis Squad Whitewashes Lutheran 7-0 in Opener;

SU tennis team whitewashed Pacific Lutheran College at Parkland Tuesday, 7-0, in the opening match of the season. The previously scheduled opener with College of Puget Sound was washed out and will be played later.

The top-seeded players of the squad announced by Coach Fr. Frank Logan, S.J., are: Don Ko-

## Cadet Rifle Team In NFA Match

ROTC rifle team participated last week in the National Rifle Association Intercollegiate Sectional Rifle matches held at Oregon State College, Corvallis, Ore.

Jerry Pospisil and Dan Burns represented the team in the individual matches. Other team members were Ferdinand Reichlin, Don Hutt, Charles Cox, and Robert Berry.

Oregon State College won the team matches with a total score of 1425. Other teams participating were: University of Washington, University of Oregon, WSC, Montana State College, University of Montana and EWCE.

vacevich, Jack Eng, Jeff Comyn, Judy Wilmarth and Rich Green. Each won their individual matches by easy scores. Other racket-handlers are Sid Mon Wai and Sam Browne.

In the doubles play, Kovacevich-Browne and Eng-Comyn defeated the Lutes.

The next scheduled game for the Chieftain net-squad is against Seattle Pacific College, April 23, at Woodland Park at 1:30 p.m.

Following this match, Fr. Logan will lead his racketeers on a three-

game tour in Oregon: April 26, Oregon State College at Corvallis; April 27, University of Oregon, at Eugene; and April 28, University of Portland, at Portland.

SU - PL	Scores
Kovacevich - Johnson	6-2, 6-1
Eng - Schimke	6-0, 6-1
Comyn - Hildebrand	6-2, 11-9
Wilmarth - Lindsey	9-7, 6-0
Green - Troedsen	6-3, 6-3
Kovacevich-Brown — Schimke-Gunderson	6-2, 6-1
Eng-Comyn — Johnson-Hildebrand	6-0, 6-3

## Flowers

CORSAGES for the ROTC BALL

P. J. CASE FLORIST

A Few Blocks West of the Campus

1014 Madison

ELiot 5066

IT'S FOR REAL!

by Chester Field

DIFFERENT TASTES\*

Sam's girl is tall and thin  
My girl is fat and low  
Sam's girl wears silk and satin  
My girl wears calico  
Sam's girl is fast and speedy  
My girl is slow but good  
Think I'd swap my girl for Sam's?  
You're darn well right I would!

**MORAL:** Whether you swap, switch, or snitch a Chesterfield King you'll discover the biggest pleasure in smoking today. Majestic length—plus the smoothest natural tobacco filter because Chesterfields are packed more smoothly by ACCU-RAY. Try 'em!

**Chesterfield King gives you more of what you're smoking for!**

\*\$50 goes to John R. Citron, Dartmouth College, for his Chesterfield poem.  
\$50 for every philosophical verse accepted for publication. Chesterfield, P.O. Box 21, New York 46, N.Y.  
© Liggett & Myers Tobacco Co.



## IK PLEDGE MEETING

Tonight 8 p.m. Students Lounge

All Interested Please Attend



## Sociology

Spin a platter... have some chatter... and sip that real great taste of Coke.

Sure, you can have a party without

Coca-Cola—but who wants to!

BOTTLED UNDER AUTHORITY OF THE COCA-COLA COMPANY BY

The Coca-Cola Bottling, Inc.  
SEATTLE, WASHINGTON

SIGN OF GOOD TASTE



## T. V. DEAN

REAL ESTATE and INSURANCE

Ground Floor, Piedmont Bldg.  
1215 SENECA ELiot 5595

## VENETIAN THEATRE

On Capitol Hill EAST 5050

Alfred Hitchcock's  
"THE WRONG MAN"

with Henry Fonda

— ALSO —

"BUNDLE OF JOY"

Debbie Reynolds - Eddie Fisher

## YOUR BARBER SHOP

5 Chairs — No Waiting  
1532 Broadway (off Pine)



## Club News

### Commerce Club

The recently reactivated Commerce Club, a social and professional organization for Commerce and Finance students, held election of officers last quarter. Officers elected were Dick Goodreau, president; Harry Hungerbuhler, vice president; Maureen Dunn, secretary; Mike Caratan, treasurer; and Mary Ann Short, publicity. Prof. J. W. McLelland is moderator.

Tentative plans of the club include a guest speaker scheduled to appear at the next meeting on April 23 and a Lake Washington cruise to be held in May. A book exchange for C&F students is also planned for Fall Quarter.

### German Club

The German Club of Seattle University has announced that they now are publishing their own newspaper. The main purpose of this paper is to give German language students an opportunity to express themselves in the language and, at the same time, to give practice in reading German.

The first issue was published April 9. There are still a few copies of this publication left, and they may be obtained in the Language House.

If anyone is interested in helping write or proof-read articles for the paper, please contact Editor Pat Rose, VE. 5218, or any German Club member.

### Pan Xenia

Men students majoring in political science, commerce and finance, and language majors, who are interested in the promotion of international trade, are invited to attend the Pan Xenia Fraternity meeting on Thursday, April 18, 7:45 p.m. at the Chieftain Lounge.

Scheduled for discussion at the meeting are the plans for a banquet, co-sponsored by the Seattle University and University of Washington Chapters. The banquet will be in honor of the visiting delegates from more than 17 countries who will attend the International Marketing Conference which will be held at the University of Washington campus early next month.

### Young Republicans

A discussion for and against Initiative 199, the redistricting initiative, will be the highlight of the Young Republican Club meeting on Monday, April 22. It is scheduled for 7:45 p.m. in the Xavier Hall Lounge.

Heading the discussion of the merits of 199 will be Dave Moore and Dan Locke. Leading the side of the opposition will be Bill Hartinger and Terry Flanagan, and Charlotte Peskcur will act as hostess.

Plans for the YR Raffle, Spring Formal, Summer field trips, and political committees will also be made at this meeting. New committee chairmen appointed for the three new YR committees are: Holly Halse, raffle committee; Dan Locke, high school political council; and Caroline Verschling, telephone committee.

Catholic Gift Headquarters

**Kaufer Co.**

1904 Fourth Ave.

MIMEOGRAPHING  
WEDDING  
ANNOUNCEMENTS  
MULTILITHING

**Alpha-Staunch**

Direct Mail and Printing

1428-11th Ave. EA. 8118

10% Discount to  
Seattle U Students

## Songfest Regulations

As the date of the 1957 Songfest, April 30, draws closer, many groups have begun practicing in earnest and nearly all the entries are in.

Regulations are quite simple and the same as last year. They are:

1. The group must not have sung before publicly as a group. (Merely

to rule out any long established amateur group.)

2. Deadline date for entries is Tuesday, April 23.

3. Any re-written lyrics must be reviewed by the chairman and approved by them.

4. A minimum of two songs is required with a maximum of four.

### Official Notice

The next administration of the Senior Comprehensive Examination in Philosophy will be on Friday, May 3rd. Students who have completed all the philosophy courses or are taking their last one this quarter, are eligible to take the examination.

A grade of B is required for graduating with honors, a passing grade is needed to receive a degree.

It is planned to offer the customary repetition classes in the various subjects of philosophy before the May 3 examination. The time and place of these repetitive classes will be posted on the bulletin board in the LA Building in the near future. A private review of the materials covered in the various courses in Philosophy is strongly advised.

## JUMBO LUNCHEON SPECIALS

*Remember!!*

EVERY TUESDAY

10 a.m. to 2 p.m.

60c

60c

**The COTTAGE**

1501 E. Madison St.

THE RESTAURANT NEAR YOUR CAMPUS

### Drill Team

Last Saturday, April 17, 1957, Seattle University ROTC Drill Team and Band, commanded by cadet captains Leo Roppo and Jerome Zimmerman, displayed their talents in well executed precision maneuvers in the annual Daffodil Parade at Tacoma, Puyallup and Sumner.

### Office Hours

The Athletic Dept. Office hours for Spring Quarter will be 10 a.m.-12 noon and 1 p.m.-4 p.m., Monday through Friday. The gymnasium will be open in the afternoons from 1 p.m.-4 p.m., with the exception of rainy days in which case the gym will be used by the baseball, tennis, and golf teams.

## SENIORS

Order Your Graduation Announcements and Personal Cards NOW

Announcements 12½¢ each

Personal Cards \$2.00 and \$3.25 per Hundred

**BROADWAY BOOKSTORE**

BEFORE APRIL 26

New Management - New Lighting - New Look

TEN - O - FOUR

**Madison  
Barber Shop**

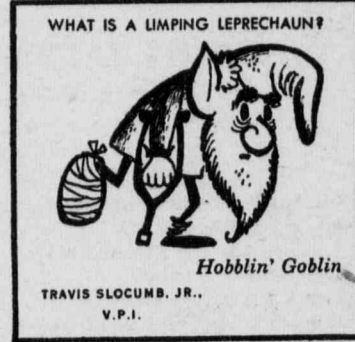
(3 BARBERS)

Near Corner of Madison and Terry

# Sticklers!

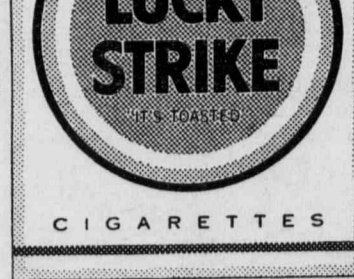


**CALENDAR** says it's spring . . . but it ain't necessarily so. The freezin' season may still come up with one last blast. And when that happens, your cigarette smoke makes a mighty *Crisp Wisp!* Of course, with Luckies, you can forget the weather. Luckies taste fine all year round—and no wonder! A Lucky is all cigarette . . . nothing but fine, mild, good-tasting tobacco that's **TOASTED** to taste even better. Forecast: You'll say Luckies are the best-tasting cigarette you ever smoked!



STUCK FOR DOUGH?  
START STICKLING!  
MAKE \$25

We'll pay \$25 for every Stickler we print—and for hundreds more that never get used! So start Stickling—they're so easy you can think of dozens in seconds! Sticklers are simple riddles with two-word rhyming answers. Both words must have the same number of syllables. (Don't do drawings.) Send 'em all with your name, address, college and class to Happy-Joe-Lucky, Box 67A, Mount Vernon, N. Y.



"IT'S TOASTED" TO TASTE BETTER . . . CLEANER, FRESHER, SMOOTHER!

©A.T.Co. PRODUCT OF *The American Tobacco Company* AMERICA'S LEADING MANUFACTURER OF CIGARETTES

**Luckies  
Taste Better**