

5-7-1953

## Spectator 1953-05-07

Editors of The Spectator

Follow this and additional works at: <http://scholarworks.seattleu.edu/spectator>

---

### Recommended Citation

Editors of The Spectator, "Spectator 1953-05-07" (1953). *The Spectator*. 477.  
<http://scholarworks.seattleu.edu/spectator/477>

This Newspaper is brought to you for free and open access by ScholarWorks @ SeattleU. It has been accepted for inclusion in The Spectator by an authorized administrator of ScholarWorks @ SeattleU.



# FINAL ELECTIONS TUESDAY

## DENNISON, SMITH FINALISTS; PRESIDENTIAL BATTLE RAGES

Climaxing the campaigning for Student Body offices, a rally will be held Monday evening, May 11, at 7:30. According to Bob Kelly, master of ceremonies, first event of the evening is a parade which will caravan the route of the residence halls.

Important campaign speeches in front of the Engineering Building will be delivered by candidates following the parade. A street dance will provide post-rally festivities.

John Kimlinger, Student Body president, suggests, "These speeches will give you, who are directly affected by elections, an opportunity to observe and judge those who want to lead you next year."

Final elections will be polled Tuesday, May 12, running from 8 to 1:30 in LA, Engineering, Buhr Hall Buildings; and from 11:30 to 1 at Providence.

Results of ASSU primaries held last Tuesday:

**President:** Rod Dennison, Flip Smith.

**Vice President:** Emmett Casey, Larry DeVries.

**Secretary:** Ginny Elliott, Dorothy Reuter.

**Treasurer:** John Jolly, Bob Elliott.

## Foundation Sets Up Year's Scholarship For Worthy Student

For the purpose of assisting and encouraging some student in undergraduate education, Crown-Zellerbach Foundation is offering a scholarship, to be awarded by the university.

Administrative authorities of SU will select the recipient on character, ability, and field of study. The latter must indicate promise of contribution toward industrial and social progress.

Other requirements are that the student must be in his third or fourth year of undergraduate work; his major course of study must be in the field of physical or social science; and he must be a citizen of the United States.

This grant, amounting to \$600 for the academic year, also includes a supplement of \$400, to be awarded by the university.

Those interested must submit a transcript, list of school activities, letter of application stating the object of their education and their future plans, and at least two letters of recommendation. All these must be turned in at the office of the President, Father Lemieux, no later than May 15.

Results of the primary election for AWSSU offices are:

**President,** Rose Armstrong and Joanne Schuck; **vice president,** Madeline Bergman and Mary Canavan; **secretary,** Dona Donaldson and Pat Williams; **treasurer,** Barbara Van Derhoef and Dorothy Schaaf.

**Adoption of proposed constitution:** yes.

## Gahan Submits Winning Name For Union Bldg.

Winner of "Name the Student Union Building" contest is Jack Gahan submitting the title of Chieftain Union Building.

The prize will be awarded May 20 at the Awards assembly.

Judges who selected the name CHUB were: Very Rev. A. A. Lemieux, S.J.; Rev. Edmund McNulty, S.J.; Rev. John Corrigan, S.J.; Rev. Edward Flajole, S.J., and Rev. John Kelley, S.J.

## Sodality Plans Spring Initiation

Following a day of recollection in the school chapel, aspirants to the Sodality of Our Lady, Catholic Action organization on campus, will be formally received Sunday, May 17.

Candidates who have successfully completed the two months' probation program are eligible for acceptance.

Beginning at 10 a.m., the day of recollection will continue until 2:30 p.m. During the formal reception at 1:45, candidates will receive their Sodality medals, pins, diplomas, and membership cards.

Rev. F. J. Lindekugel, S.J., moderator of the Sodality, will conduct the ceremony.

Present Sodality members are requested to contact Mary Narey if they plan to attend the day of recollection.

SEATTLE



UNIVERSITY

Vol. XX

SEATTLE, WASHINGTON, THURSDAY, MAY 7, 1953

No. 21

## May Procession Honoring Mary Next Wednesday

The annual Living Rosary Procession to the campus shrine honors the Blessed Virgin next Wednesday morning at 10. Rev. W. J. Codd, S.J., will deliver the address on Our Lady.

Vice Prefect of the Sodality Mary Narey will place the crown of flowers on the statue of the Blessed Mother. Bob Schmid, freshman, has been chosen standard-bearer and the Homecoming Court in pink satin and black lace formals will act as escorts.

### Human Rosary

Spurs in white SU jackets and IK's in white sweaters will represent the "Hail Mary's," with APO's in dark suits representing "Our Father's" in the human rosary chain.

Recitation of the rosary will be led by Emmett Beaulaurier, prefect of the Sodality. Furnishing the music will be the double-quintet.

Classes will be let out during the period so that all faculty and students may participate.



Sodality Vice Prefect Mary Narey rehearses the coronation ceremony she will perform next Wednesday during the "Living Rosary."

## Singing Competition Features 13 Groups

Students, faculty, and friends of Seattle University will gather at the Memorial Gym next Wednesday night to hear the performances of 13 amateur SU singing groups. Starting at 8 p.m., the three classifications, men's, women's, and mixed chorus, will present their vocal talents.

Trophies will be awarded to the best organization in each division and to the overall sweepstakes winner of the evening.

The second annual Song Fest judging will be based on originality, preparation, presentation, and audience appeal. The admission-free evening is sponsored by Mu Sigma, music honorary.

## Choir Presents Operetta Gems Friday, May 15

Under the direction of Carl Pitzer, the A Capella Choir will present its annual light opera concert May 15. "Gems From Light Opera," sponsored by Mu Sigma, music honorary, begins at 8:30 p.m. in the SU Memorial Gym.

This concert marks the initial appearance of the University orchestra, which was recently organized expressly for school musical productions. It will accompany the chorus in selections from such Broadway hits as "Oklahoma," "Carousel," and "Kiss Me Kate."

Featured soloists are Mary Frances Barthel, Bill Doyle, Harold Lebenach, Phyllis MacFarlane, Ralph MacFarlane, Peggy Mack, Pamela Haas, Dorothy Schaaf, Mary Kay Schaaf, Barbara Torlai, Martha Torlai, and Patricia Welch.

Students will be admitted free upon presentation of Student Body cards. General admission tickets will go on sale May 11 at the information booth and can also be purchased at the door.

### SENIORS!

Any seniors who have not yet signed for their comprehensives must do so before May 13 or pay an extra dollar.

## Queen Ruth Reigns As IK Sweetheart

Ruth Oaksmith, freshman, was crowned IK Sweetheart for 1953 last Saturday night in Serbian Hall.

Accompanying her at the fourth annual IK Ball were Princesses Mary Ann Marti, Mary Canavan, Margie Lappin, and Yvonne Huot.

The annual award for IK of the Year was presented to Jack Gahan. Other finalists for the award were John Kimlinger and Bernie Skahill.

### CLUBS!

All clubs who have changed officers within the last three months or plan to re-elect before the end of the quarter, please notify Marion Helenkamp, ASSU secretary.

## PAT WELCH PRESENTS SENIOR RECITAL SUN.

Patricia Welch, music major, will present her senior recital in viola and voice Sunday, May 10. Starting at 3:30 p.m., the musical program will be held in room 600, Warren West.

A member of Mu Sigma and student chairman of the Opera Guild, Pat is the first student from Seattle U to earn the degree of Bachelor of Music in the Performing Arts.

Allen Suver, member of Seattle U faculty, will accompany at the piano, and members of the official Navy String Quartet will assist for the afternoon's program.

There will be no admission for the Sunday recital. Students are welcome to come and bring their families and friends.

## Mixer Follows Gala Carnival Tomorrow Nite

Step right up, folks! Turtle races, bingo, dart throws, and many other concessions will be found at the annual ASSU Carnival this Friday night, Seattle U Gym, from 7 to 10:30.

Eighteen clubs and organizations on campus are joining the show with various displays, concessions and games. A trophy will be given for the booth showing most originality and work.

Co-Chairmen Darrell Brittain and John Jolly remind students that there is no general admission charge for the evening.

### Mixer Follows

A mixer is scheduled following the carnival at the Women's Century Club, 807 E. Roy. Sponsored by A Phi O, the dance will last from 10 to 12 p.m.

## Eng'r Dinner Dance Slates G.E. Speaker

Mr. George Nelson, Seattle sales engineer for General Electric Corporation, will be guest speaker at the annual banquet held by the Engineers Club of Seattle University.

The Spanish Ballroom of the Olympic Hotel is the site for the banquet slated for Saturday, May 16, from 7 p.m. to 12:30 a.m.

Single admission for the dinner-dance is \$4.00, couples, \$8.00.

Attire for the evening is semi-formal with men in suits and girls in formals. Jay Curtis and his orchestra will furnish the music.

### ATTENTION!

Mass will be offered daily at 8 a.m., in the chapel during May, in honor of the Blessed Virgin.



Pictured above are some soloists in Mu Sigma's annual "Gems from Light Opera." From left to right, they are: (front row) Pat Welch, Peggy Mack, Pamela Haas; (back row) Tom Stipek, Dorothy Schaaf, and Bob Suver.



# Extension

There's a lot of talk bantered about concerning unity and cooperation among students, especially during a campaign period. Unity boils down to just one thing: willingness to work together. As usual, we have the proverbial two sides to every question, and we'd like to offer them here:

1. A certain small portion of the student body is prominent in student activities, government, and general manipulation of the annual student body affairs. They've devoted their time in this way because they enjoy it and think it is the best way of supporting Seattle U. However, they send up a cry about midway in the year, charging, "There are hundreds of students at SU who are perfectly capable of helping with the extra-curricular work. They aren't interested in their school because they won't 'dig in' and help. It's a shame to SU that so great a portion is apathetic."

Thus argues our group number one, but the accused also have a word to say.

2. Our second group could be divided into three categories: The "I'd like to join, but don't know how" division, "I don't have time" group, and "I'm not interested."

The last mentioned section is really very small. There are few SU students who could actually be branded completely uninterested. However, many SUites don't have the time because of afternoon jobs and heavy study schedules. But, if they contribute to the good reputation of the University through their good example on the job and with friends, and if they incorporate their Christian education into everyday action, they will be doing much more for the school than any club president or activity chairman.

The last group has this to say for themselves: "We're interested in school activities, too, but no one ever asks us to join in the work. It's not easy to elbow your way into an organization when it is apparently run by a small group or clique."

Unity, we repeat, means working together. No one person can unify the school, there must be a desire on the part of everyone to cooperate. With understanding, hospitality, friendliness, and one large step forward by every person, we can work together.

—YOUR EDITOR

## SU CHARIVARI by Ceolwulf

### Certe! Bene dictum est!

Many years ago whilst I was quite young, the philosopher Aristotle, who lived next door but one, explained that all knowledge is obtained through the senses. All this I accepted and it caused me no worry — until one day I happened upon the picture of the three pseudo-philosophers, the priggish monkeys clamping their lunch-hooks tightly over their respective eyes, ears, and mouths. They didn't see nuttin', they didn't hear nuttin' they didn't say nuttin'. And to all practical purposes they don't know nuttin'. And so, declaring these Simian simps to be decadent Platonists at best, I submit this more accurate picture of intelligent activity. Whazzat? Hey, put me down!!

### Repercussions

After last issue's dissertation on Father Gaffney's Hiyu Hat and the principle of Excluded Middle State several inquiries have been put to me. I have meditated further (sipping Zinfandel) and will answer these inquiries briefly thus: "Though deviating considerably from the accepted norm, the cassock of Father Toulouse is NOT capable of inclusion in the newly posited fourth and transcendental state of being."

### Anthropomorphic, But Charming

Several days ago I ran across a series of quaint little stories called "Fee Fie Fo Fum's Anecdotes of God." One of these told how God one day wandered into a group which was discussing the ideas of space-time and the expanding universe. God left hurriedly and quietly lest He too become involved and confused in it.

## Seattle Hugh • JOHN MCGOUGH



## Why Major in English?

• DR. RICHARD HICKEY, Professor of English

Whereas the student who is seeking a course of instruction that will swiftly guide his feet along the lane which inevitably leads into Easy Street will certainly not choose to major in English, nonetheless others who do not consider the earning of a livelihood the be-all and the end-all of a career in life will recognize the value of a thorough training in English.

Mastering the various courses in this field not only is the surest foundation and complement of such careers as teaching, law, and medicine, but affords likewise an excellent training in thinking clearly, speaking correctly and forcibly, and living the good and the abundant life.

### Comp's Aid in One's Career

The many problems which the student will later encounter in performing the daily tasks of his life's work will not prove a greater challenge than planning the logical steps in the outline for his research paper. And in the actual writing of the essay, he will find the ideal application of all the abstract principles acquired in assiduous study of logic. Again in analyzing the thought content of the many master works written in both prose and poetry, he will increase and discipline his own intellectual faculties.

### Basis for Social Contact

The transition from thought to word is an easy step. Holy Scripture tells us that from the abundance of the heart the mouth speaketh. When one's head is replete with the chosen coin of fancy of the poets, the bon mots of the essayists, and their psychological observations, one's tongue finds little difficulty in choosing the language which best comports with any and all circumstances. Your aptest toastmasters and after-dinner speakers are those who are familiar with the teeming treasures of English literature. Even in the professions, other things being equal, the most persuasive men are those who have drunk copiously at the Pierian spring.

### Lit Enriches Student Life

Finally the alert student will tap all the springs of literature to fill the cisterns of the mind, to make rich the future hours of leisure with the remembered gems from some good book. Getting and spending, we lay waste our powers; and to keep these powers at their utmost, play and sports are not sufficient. To derive the maximum enjoyment from all the emotional and intellectual entertainments, such as movies, stage plays, televised drama, one must have attuned his heart and mind to appreciate these pleasures. And for this purpose there is no better preparation than a thorough course in English literature.

## Unity? Candidates Tell How!

• ANNE LIPPERT

Last week we ran a story on community at SU. We talked about our vocation to the student life and its end — sanctity. But besides individual initiative — growth in the spiritual, intellectual, social, and physical sides of our college career — we know that cooperative effort makes community. Candidates for final elections were asked to point up practical means of achieving this unity. Here are their answers:

### President

**Rod Dennison:** The most important thing is not to introduce radical changes, because such changes are never constructive in the long run. To further unity on our campus we must first operate efficiently within our present structure and then make gradual improvements where needed. Methods, such as becoming more aware of our part in campus life through more and higher quality publicity, and using the knowledge gained through this past year's experimentation with the Activities Bureau can help all of us to become more united through student activities.

**Philip Smith:** One of many suggestions to achieve better unity between the student body and the faculty would be to have a "High School Day" — high school seniors invited on campus — when each individual SU student would be assigned to a high school senior and would introduce him or her to every non-living and living object on campus. The faculty would definitely help us and continue to help all of us make a better Seattle U for a bigger Seattle.

### Vice President

**Emmett Casey:** A unified Student Body is an informed Student Body. An informed Student Body is an interested Student Body. I think a letter from the ASSU vice president to the Dean and to THE SPECTATOR informing the faculty and the students of the accomplishments of the Student Assembly and the Activities Board would be a means to student unity.

**Larry DeVries:** For more harmonious student-faculty relations we must have a more efficiently organized student government and complete cooperation with it on the part of all campus organizations. Then we can prove that we are worthy of the confidence of the faculty.

### Secretary

**Ginny Elliott:** One of the ways to stimulate closer relations between faculty members and the students is to have mimeographed copies of the

## SEATTLE UNIVERSITY SPECTATOR

Official publication of the Associated Students of Seattle University. Published weekly on Thursday during the school year, and twice quarterly during Summer School sessions. Editorial and business offices at Tenth and Madison Street, Seattle 22, Wash. Subscription rates, \$1.50 per year. Entered as third class matter.

## Senior Spotlight

• CHARLOTTE VAN DYKE

Lack of enthusiasm? Unh-unh! With Don Ley it's usually, "Get with it" or "Let's go!" People follow and are glad they did.

The thing that he has mostly concerned himself with in college has been A Phi O. In his sophomore year, he, Dave Lembcke and several others felt that there was room for another men's honorary on campus. Don picked up some ideas at a convention at the University of Oregon and came back here to reign as Seattle University chapter's first president. Last year this chapter became affiliated with the national organization.

Much as he's been wrapped up in A Phi O, Don has many other interests and activities. He was just recently tapped for Alpha Sigma Nu for his scholarship and service, and he is a member of Kappa Delta Pi, education honorary. These, of course, are minor in comparison with his avid interest in sports of all kinds.

It is told how Don played varsity baseball in his freshman and sophomore years. He and



Don Ley

Ed O'Brien played the same position but for Ed it was "left outfield" while for Don it was "left out . . ." He is still an active member of the varsity club and a lover of outdoor sports such as hiking (Hiyu Coolee member and truck driver for many hikes), fishing and—acrobatic diving.

Credit goes to Mr. Ley for keeping busy with jobs.

His summer work includes mostly athletic coaching and playground work, his winter work included working in a gas station, for a sander, for the SU library, and a janitorial position for the Student Body office which goes with his post as sergeant-at-arms.

Still with all of this, Don, a frustrated ukelele player, finds time and energy to have "much fun party-ing." He's usually late wherever he goes, but when he arrives it's "Hi-hi!" and all is fine.

Soon he'll be saying "Bye-bye!" to Seattle U to take advantage of his appointment to West Point and that's not so fine. Who, then, will send nasty notes to the Student Body treasurer, produce friendly greetings in the hall, announce for basketball games, and "chairman" the Good Neighbor drive?

minutes of all general student meetings sent to the President, the Dean, and to the chairman of the LA Faculty Committee, so they can see what the students are planning.

### Treasurer

**John Jolly:** The new SUB is the biggest help to student unity since the LA Building was built. All activities will be combined in one building and coordinated through it. The students will have a common center of interest.

**Bob Elliott:** There's always room for improvement and now is the time to prepare for next year's student government. Several things we can work for are more active participation in campus life activities, a building up of school spirit by both faculty and student body, and also even distribution of finances toward betterment of student functions.



## The Man in the Doghouse

• JIM SABOL

"SPRING HAS SPRUNG, the grass has riz; I wonder where the flowers is . . ." Now is the time for all good men . . ." With these immortal words, typing classes everywhere traditionally herald the advent of summer. And that is what they're typing up in room 210, so it must be official. Already, a sizable number of SU students have braved the icy waters of Lake Washington at Madrona Beach, so it looks like summer is here:

POME: When days are warm  
And hearts are gay,  
Oh, what is so rare  
As an "A" in May!

"Looks like that one got away," might be a fitting last line to the pome above. That's just what Dr. Lash, Education instructor, said (referring to student methods of skipping) when he saw a broken window in his classroom.

EVERYBODY wants to get into the act dept: Lecturing on Shakespearean plays, Mr. Spiers quipped: "It would have been impossible to have real horses as props in those days because the stages were so unstable."



# Pastornicky Beats UW With Second No-hitter; Chiefs Face Pilots Saturday

By AL WILLIAMS

Led by Ernie (Double No-No) Pastornicky, who threw his second-straight no-hitter, the Chieftains downed the Washington Huskies twice Saturday, 1-0 and 5-4, at Sick's Stadium.

Pastornicky, who had been sidelined with recurring arm trouble, was in complete command, although he used his fast-ball sparingly. Ernie followed the same pattern as he did in blanking CPS, mixing up his slower stuff in the early innings, saving his quicker deliveries for the last couple of frames. This second no-hitter, coupled with two sore-arm starts, leaves Pastornicky still unhit and unscored upon this season by college opponents.

Fred Baehm's single into right field, scoring Bill Collier, in the second inning proved to be the important blow. Collier had gotten aboard on a line drive one-baser.

The contest was well played by both sides, with the only error charged against the Huskies. Pastornicky received top support to insure the shutout. Bill Reams, the UW hurler, was in plenty of trouble, but pulled out each time except for the second inning.

Bob Ward got credit for his sixth victory in the second game. Ward started out in shaky fashion, being troubled with wildness and being hit solidly. After allowing two first-inning runs, he settled down to hold Washington to two more runs the rest of the way. SU tied up the game in the third, then iced it in the sixth with a three-run outburst climaxed by Don Ginsberg's line-drive double off the right field wall. Ward himself sent the clincher across the plate from third with a deep fly to center.

Bill Collier came up with the catch of the day, sliding on the turf to pull down a fast-sinking liner with the bases loaded in the second game, cutting off at least two runs. Collier rapped two hits and hit the ball solidly each time up. Jim Gallwas pounded out two second game bingles.

Tuesday the Chiefs ran their season record to 15-7 as they split a doubleheader with Western Washington, 14-3 for SU, 12-8 for Western.

John Kelly made his first start in weeks, firing a five-hitter for the first game win. Bob Ward was the loser in the nightcap. Cal Bauer led the SU attack with two homers, a double, and a single.

## Portland Next

Still shooting for a possible NCAA bid, the Chiefs must win practically all their remaining contests to stay in the running. Pastornicky will probably go after his fifth-straight win Saturday as the Chiefs meet Portland U in a Broadway Playfield twin bill.

Art McLarney's Pilots split a doubleheader with SU in Portland, 6-5 for Portland and 6-1 for SU. Bob Ward will get a chance to even things for his earlier loss to the Pilots if he goes in the other contest.

Portland has had so-so luck thus far, being also troubled with pitching. Center fielder Stan Rozich, left fielder Rudy Satalich, and second sacker Dick Bartel are the leading hitters, all over the .300 mark.

SU meets PLC and Central the following week end in double-headers, both away. The final home game will be against Seattle Pacific Friday, May 22, with a contest at Magnolia against the same team the following day.

## Don't Read This!

We warned you not to read this. Already you have read the first couple of lines. Your curiosity has led you on, but you still have time to quit. Well, if you insist, we must tell you. Ed "Rube" Rubatino is your best man for Sergeant-at-Arms.

(Paid Adv.)



Above is Fred Baehm, freshman third-sacker, who singled in the only run of the contest as SU beat Washington, 1-0, in the first game Saturday.

## Hiyus Journey To Nat'l Park In Overnite Hike

About 50 Hiyu Coolee Hiking Club members will pack their gear for the annual overnight hike this Friday and Saturday.

Destination of the hikers will be Olympic Hot Springs in the Olympic National Park, about 20 miles southwest of Port Angeles.

An advance party, composed of Bill Whitlock, Ginny Elliott and Darrell Brittain will leave at 11 o'clock Friday morning. They will prepare dinner for the remaining hikers, who will embark at 1 p.m.

The overnight is open to all Hiyu members who have been on seven hikes.

## Patronize Our Advertisers!

Only a Few Blocks from Campus  
**15th North Self-Service Laundry**  
Open Till 8 p.m. Weekdays  
Saturdays Till 6 p.m.  
129 - 15th Avenue North

## Netmen Down CPS By 6-1; PLC Next

SU netmen blasted CPS, 6-1, at Tacoma Monday, after taking an 8-0 shellacking at the hands of Portland U Saturday.

The lone winner for CPS was former Ballard High star Bill Medin, who took Vern Ball, 6-1, 6-1, in the No. 1 match.

Monday the racqueteers travel to Parkland to meet Pacific Lutheran.

The results of the CPS contest with SU listed first follow:

Vern Ball lost to Bill Medin, 6-1, 6-1; Fred Hupprich beat George Pearson, 6-1, 6-2; Jim Forler beat Bill Wee, 7-5, 6-3; Charles Chihara beat Dutch Brandegee, 6-1, 6-3; Roger Frydenlund beat Bill Rush, 6-2, 4-6, 6-3; Hupprich-Ball beat Medin-Brandegee, 7-5, 7-5; Forler-Frydenlund beat Pearson-Anderson, 7-5, 6-3.

## Divotmen Set For Huskies

Pointing for their big match with Washington, the Chieftain golfers downed the CPS Loggers, 12-3, at Fircrest Monday.

Dick Masterson fired a 1-under-par 70 to take medalist honors. Masterson also led the Chiefs with a 70 against Portland U Saturday, as SU lost the match, 11-7, to the strong Pilots.

The divotmen take on the Huskies Monday at Inglewood. Last year the Huskies edged SU and the Chiefs would like to even the score.

SEATTLE U	CPS
W. Samples -- 3	D. Anderson -- 0
P. Lesser -- 1½	R. Aest -- 1½
D. Masterson -- 3	M. Dear -- 0
J. Harbottle -- 3	D. Colundini -- 0
G. Karpach -- 1½	S. York -- 1½

Tuesday the Chiefs tied UBC, 13½ to 13½, at Inglewood. Dick Masterson was again medalist with a 72 for three points, while Wayne Samples also picked up three.

**Catholic Supply and Gift Headquarters**  
Books and Lending Library  
**THE KAUFER CO.**  
1904 Fourth Ave., near Stewart

For a  
**JOLLY**  
GOOD  
**TREASURER**  
(John Jolly)

## What Do You Want Most In A Job?

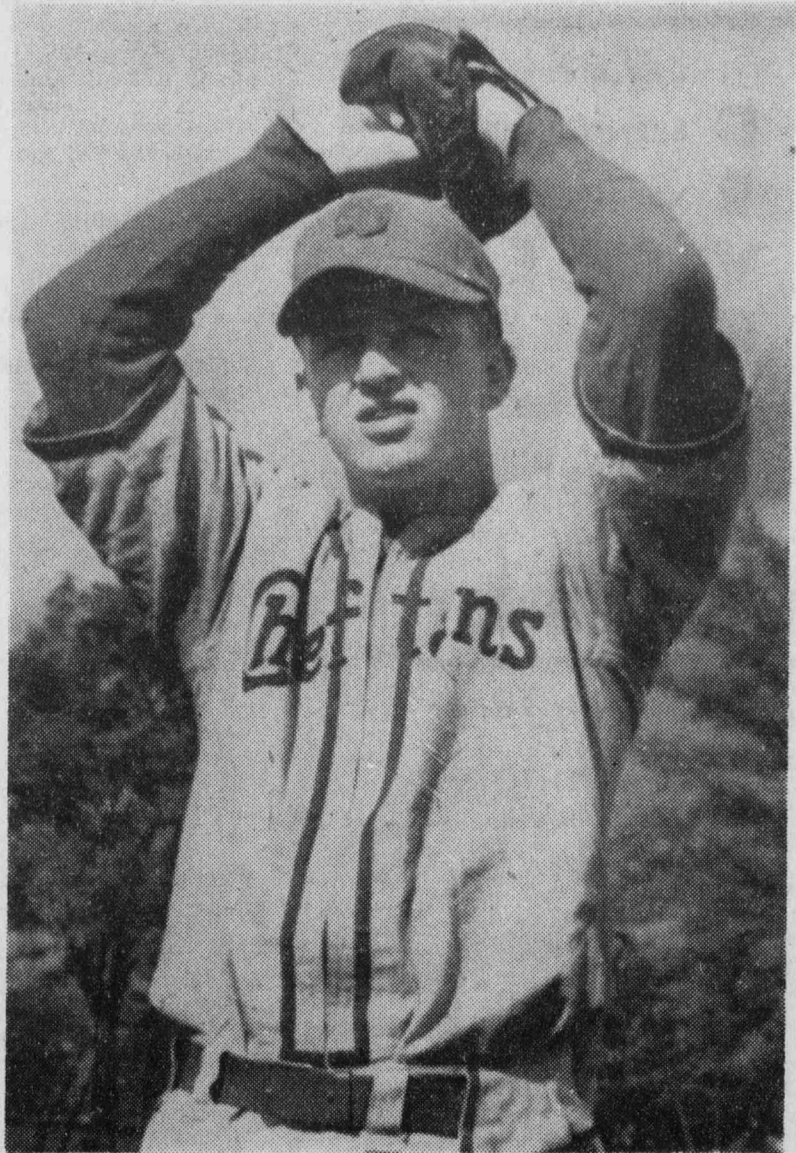
Do you want an interesting job with a future? Do you like to deal with people? . . . to do work that is stimulating and has variety? . . . to exercise your judgment and initiative? . . . to assume responsibility?

The job of a Telephone Company Service Representative is interesting — challenging. She handles the contacts with customers assigned to her on matters concerning their service.

Steady work with good pay from the day you start. Regular salary increases. Opportunity to advance. Congenial associates. Convenient location.

If you'd like to know more about one of industry's most desirable positions, stop in at our employment office.

**Pacific Telephone**  
SECOND & UNIVERSITY  
"It's a Good Place To Work"



Curve-balling Bob Ward, sophomore right-hander, currently leads Chieftain hurlers in wins, with six. Ward has taken up much of the slack in Brightman's depleted pitching staff, and came through with a 5-4 win over UW Saturday.

**ELECT**  
**BARBARA**  
**VAN DERHOEF**  
**AWSSU**  
**TREASURER**

**ROD**  
for  
**PRESIDENT**

## CAMPUS CALENDAR

What,	When
CARNIVAL, HIYU OVERNIGHT.....	May 8
HIYU OVERNIGHT .....	May 9
FINAL ELECTIONS, DEMOS MEETING.....	May 12
MAY PROCESSION, SONG FEST, A PHI O, COLHECON MEETINGS .....	May 13
NO SCHOOL, A PHI O, SPURS, IK PICNIC.....	May 14
GEMS OF LIGHT OPERA.....	May 15
SPUR DANCE, ENGINEERS BANQUET.....	May 16
SODALITY RECEPTION, SILVER SCROLL BANQUET.....	May 17
IK MEETING .....	May 18
PHILOSOPHY, PSYCHOLOGY MEETINGS .....	May 19
C & F BANQUET, COOKIE SALE.....	May 20
CHESS, VARSITY, SPURS, CCD MEETINGS.....	May 21
BACCALAUREATE, JUNIOR PROM .....	May 22
SENIOR BANQUET .....	May 24
YOUNG DEMOS MEETING .....	May 26
A PHI O MEETING.....	May 27
FINAL EXAMS, SENIOR RECEPTION.....	May 28
FINAL EXAMS, GRADUATION .....	May 29

**VOTE!**

**VOTE!**



Beautiful and Varied Selections of  
**WEDDING and ENGAGEMENT RINGS**  
20% DISCOUNT TO ALL SEATTLE U STUDENTS!!  
**FRANK KIEFNER**  
512 BROADWAY NORTH  
Across from the A & P Parking Lot

**GIFTS**

**Time NOW To Think of a Mother's Day Gift — MAY 10 Is Her Day!**

For Your Convenience We Have a Mailing and Gift-Wrapping Service  
On Your Way Down Madison, Stop at the

**WILSONS'** **FIRST HILL GIFT SHOP**  
1219 Madison St.



**Elect**  
**D**EPENDABLE  
**E**XPERIENCED  
**V**OTE  
**R**ELIABLE  
**I**NTERESTED  
**E**FFICIENT  
**S**INCERE  
**VICE PRESIDENT**

### Allen Competes In State Finals

Tonight at 8 o'clock Steve Allen, junior, will represent Seattle University in the state finals of the Hearst Oratorical contest. Judging will take place at McKinley Auditorium on Seattle Pacific College campus. Steve earned the right to orate as the representative of SU in the school finals April 10. Contestants from seven state colleges and universities will talk on the life and times of John Marshall. Winner of tonight's contest will represent Washington in the national finals.



Photo by Kennell-Ellis  
Steve Allen

### Marketing Division Hears Utz, Gormley

Each year the Commerce and Finance Marketing Division invites key Seattle business men to speak to the students. This week John S. Mykut, divisional head, has scheduled two speakers for his marketing class. "Buying" will be the subject of Jack Utz, manager of the budget floor, merchandise division, Frederick & Nelson, on Friday, May 8. Jack Gormley, administrator credit supervisor of Seattle First

**CLASSIFIED**  
Lost something? Want something? Advertise in your SPECTATOR. Only 5 cents per line for students; 10 cents a line for those out of school.

**WEDDING CATERING**  
GETTING MARRIED? Complete reception service. Phone Mrs. Tharp, ME. 8115, or Mrs. Ruggles, LO. 3189.

**ORCHESTRA**  
MILO HALL Orchestra, up to 10 pieces. For your small affair, use our combo. GARfield 7056.

**TYPING**  
WILL DO any kind of typing, pick up and delivery. Nettie Belleman, CA. 9397.

**HELP WANTED**  
SUMMER WORK in bank for paying and receiving teller, must be experienced. Full time, 5-day week. Excellent working conditions. Write in care of THE SPECTATOR.

**HELP WANTED — MALE**  
TWO MEN age 20 or over as unit leaders for 16 boys at summer camp. Lopez Island in San Juans, June 25 to Aug. 25. Full-time assistant, age 18 or over, provided. Salary for season \$280, plus excellent food and beach tepee lodging. Horseback riding, swimming, sailing, canoeing. Seattle telephone beginning Sunday, May 9, CApitol 0779, Mr. or Mrs. Henderson.

**EUROPE BY BICYCLE**  
Low Cost Student Tours, Bus or Bike. Mexico, S. America, Orient, Far West. Plan now for summer '53. See more with  
**SITA STUDENTS' INTERNATIONAL TRAVEL ASSOCIATION**  
Mary Lou LaPierre, 5561 Ambleside Rd. VERmont 6162

National Bank, will speak on "Consumer Finance" Tuesday, May 12. Last week H. O'Neil, Seattle Pay 'n' Save Drug Stores manager, and J. A. Walsh, assistant comptroller of the Bon Marche, spoke before the class.  
Cookies will be sold in the halls of Seattle U Wednesday, May 20. Proceeds will go to the Colhecon Club, SU home economics group.

**COTTAGE CAFE**  
1501 E. Madison  
Managed by FRED SCOTT, Class '50  
Open Daily 6 a.m. - 2 a.m., except Fri. and Sat., 6 a.m. - 3 a.m.

**FIVE-POINT CLEANERS**  
WE SPECIALIZE IN FAST SERVICE!  
Across the Street from Campus 1112 Broadway

**VOTE TUESDAY! VOTE TUESDAY!**

# TRIPLE THREAT MAN!



## The Brains of the Team

Teamwork can work miracles. In a football game the man who sparks these miracles is the quarterback. He's the man who calls the signals. There's a man who calls the signals for an Air Force flying team, too! They call him an Aircraft Observer.

**Do YOU have what it takes to become an Aircraft Observer?**  
It isn't easy. It's tough. You have to be a MAN to qualify as an Aircraft Observer. But when you are one, brother, you're SOMEBODY! The success or failure of a mission involving over a million dollars worth of flight equipment depends on you.

**THE AIRCRAFT OBSERVER IS THE SOMEBODY WHO:**  
As *Bombardment Officer*, is number one man on a bombing run, the man who controls the plane in the target area!  
As *Navigation Officer*, is the pilot's guiding hand on every flight!  
As *Radar Officer*, is master of a new science and operator of the device that sees beyond human sight!  
As *Aircraft Performance Engineer Officer*, is the one who "keeps the plane flying", the man who knows his plane in-

side and out, who keeps it fit for the skies and sees that it stays there!

If YOU can accept a challenge like this, you'll take your place beside the best—you'll find your future in the clouds!

**TO BE QUALIFIED** you must be single, a citizen, between 19 and 26½ years old, have had at least 2 years of college and be in tip top physical shape. If this describes you, then YOU, too, can qualify. Today!

**HERE'S WHAT YOU'LL GET!** The world's best training. Good food and plenty of it. Uniforms, flight clothes, equipment. Medical and dental care. Free insurance. Flight training in Uncle Sam's greatest aircraft.

**AND THEN, AFTER GRADUATION**, you'll win your silver wings, and earn more than \$5000 a year as an Air Force Lieutenant. You'll enjoy an adventurous, exciting career with a hand-picked crew of real men. You'll be THE BRAINS OF THE TEAM, A TRIPLE THREAT MAN... as a Bombardment Officer, as a Navigation Officer, as a Radar Officer, as an Aircraft Performance Engineer.

★ **THE SOONER YOU APPLY, THE SOONER YOU FLY!** ★  
**GET THE DETAILS:** Visit your nearest Air Force Base or Air Force Recruiting Officer. Or write to Director of Training, Headquarters, USAF, Washington 25, D.C., Attention: Aviation Cadet Branch. If you are in a school that has an Air Force ROTC program, see your Professor of Air Science and Tactics.  
★ **New Aircraft Observer Cadet Training Classes Begin Every Two Weeks** ★



★ **AIRCRAFT OBSERVER PROGRAM** ★