

11-6-1952

Spectator 1952-11-06

Editors of The Spectator

Follow this and additional works at: <http://scholarworks.seattleu.edu/spectator>

Recommended Citation

Editors of The Spectator, "Spectator 1952-11-06" (1952). *The Spectator*. 462.
<http://scholarworks.seattleu.edu/spectator/462>

This Newspaper is brought to you for free and open access by ScholarWorks @ SeattleU. It has been accepted for inclusion in The Spectator by an authorized administrator of ScholarWorks @ SeattleU.

3-DAY RETREAT NEXT WEEK

Annual Sadie Hawkins Day Tolo Tomorrow



In typical Dogpatch fashion, Jackie McDonald urges Marv Pasquin to attend the Sadie Hawkins Tolo with her tomorrow night.

Girls Escort Boys Friday; Silver Scroll Sponsors Tolo

By DONA DONALDSON

Sadie Hawkins Tolo time is here again and the girls are treating the boys in traditional style Friday night, Nov. 7, at the Palladium. Tickets for this non-cabaret dance are two dollars per couple. Ted Carper's orchestra will furnish the music from 9:30 until 12:30.

Silver Scroll, junior women's service honorary, sponsors this first tolo of the year. The attire for the affair is informal, with dresses and heels for girls and suits for boys.

Co-chairmen for the event are Jackie McDonald and Leila Charbonneau. Introduction of new members will be held at intermission.

Publicity is headed by Pat Keeling and Rose Armstrong. Dorothy Reuter, Joanne Schuck and Theresa Schuck are in charge of programs.

'Boutonnieres'

Spur boutonniere sale for the Sadie Hawkins Tolo ends tomorrow. Orders are being taken at the Information Booth from 11 until 12:30 today and Friday. At 35 cents each, the flowers may be picked up at the booth Friday between 11 and 12 noon, 5 and 6 p.m., or at the dance that evening. Girls may also purchase them to wear in their hair.

Rev. Corkery, S.J. Opens Guild's Winter Series

The first in Seattle University Guild's winter series of lectures and concerts will be the presentation of the Very Reverend Francis E.



Fr. Corkery, S.J., president of SU, Father Corkery will talk on "The Battle for the Minds of Men." He will be introduced by the Very Rev. A. A. Lemieux, S.J.

Student tickets will be on sale for 75 cents at the box office this evening.

Season Guild tickets may be secured by calling Miss Agnes Handey, Capitol 2571, and single tickets for each event will be available at the door. All parents of Seattle University students are urged to attend.

33 New Applicants Considered by IKs

Thirty-three male students have been accepted as applicants for the Intercollegiate Knights. Under Pledgemasters Larry DeVries, Bernie Skahill and Chuck Karaman, the applicants will attend regular meetings and perform service duties.

The pledge period lasts until November 25 when the active members vote on the initiates' eligibility to pledge. A formal initiation will take place at a banquet early in the winter quarter.

Applicants are Robert Ayres, Cecil Albee, Ken Borski, Charles Burke, Mike Dennehy, John Gallucci, Robert Graves, Duane Greer, Robert Hattrup, Victor Heins, William Herold, James Honda, John Jolly, John Kirk, Michael Lane, James Lyons, Steve Moreland, Robert Morris, Joe Prather, John Ryan, Bill Stolcis, Erwin Sundstead, Robert Suver, John Talbot, Bill Taylor, Donald Tessier, Gerald Voelker, Anthony Voukov, Robert Wehrer, James Welch, Ben Schwartz, Clarence Leingang, Ben Bullinger.

Specs of News

Al Acena was elected president of Pinoy Club at the first meeting of the year, Oct. 29. Other officers include: Jerry Laigo, vice president; Loretta Pimental, secretary; and Bill Neri, treasurer.

On the agenda for the club are cooperative activities with the Filipino Club of UW. A joint meeting was held last Saturday.

Our Lady's Committee of the Sodality wishes to express thanks to all those who gave of their time to pray the Perpetual Rosary on Tuesday, Nov. 4. The particular intention was for wise judgment of voters for elections.

Officers and moderators of SU Colheon Club will attend a state convention at Washington State College, in Pullman, Nov. 14-15.

All publicity for the women student activities, including the recent Pun'kin Pow-Wow and Apple Sale is headed by Co-Chairmen Suzanne and Suzette Riverman.

SEATTLE *Spectator* UNIVERSITY

Vol. XX

SEATTLE, WASHINGTON, THURSDAY, NOVEMBER 6, 1952

No. 6

Sexton Directs '53 Production Of Drama Guild

By BILL BRAMMER

The largest group in the history of Seattle University Drama Guild was on hand October 27, 28 and 29 for tryouts.

"The Patsy," a comedy in three acts, by Barry Connors, is the first of two major productions scheduled for this year.

Keith Sexton of the University of Washington will direct the play. Sexton majored in drama before his graduation from the UW and was affiliated with the well-known Pasadena Playhouse, Pasadena, Calif. At present he is a member of the faculty at the University of Washington in charge of children's productions, and is director of dramatics at the Washington Athletic Club.

The cast includes Suzanne Riverman as Patricia Harrington; Byron Hoffman as Bill Harrington; Harriett Regan as Mrs. William Harrington; Steve Allen as Tony Anderson; Bill Schuetz as Billy Caldwell; Chuck Vogeler as Francis P. O'Flaherty; Marcus Ritter as "Trip Busty," and Joyce Van Dyke as Sadie Buchanan.

"The Patsy" will be presented Jan. 13, 14, and 15.

Retreat Fosters Moral Growth Vital to Education -- McGuigan

By MARY LOU CORBETT

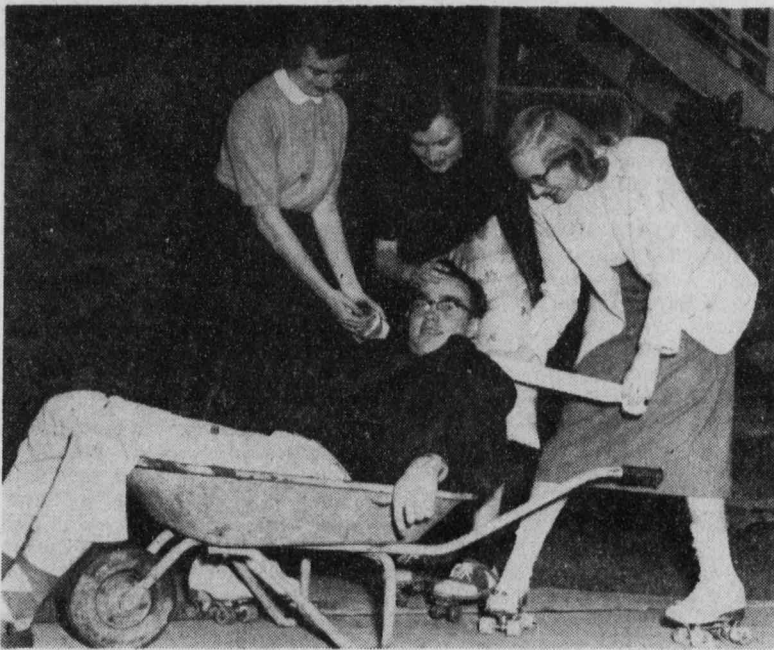
"Education is the physical, intellectual, and moral development of a person," according to Fr. James McGuigan, S.J., Dean of Faculties. "Of these the most important phase is moral education. Toward this end, Seattle U. has set aside three days, Nov. 12, 13, and 14 for the annual retreat."

Seniors
Monday, Nov. 10, is absolutely the last day for senior "Aegis" pictures.

Initial Totem Mix Next Sunday Night

Totem Club will hold its first mixer at Buhr Hall this Sunday evening, Nov. 9. Adrian Richmond and Bob Downing, representatives from Tacoma, and Ken Hayne and Mary Ellen Castagnola from California will be co-chairmen of the dance.

Other chapter representatives elected at the last meeting are: Bob Hattrup and Cecilia Olkrich, Oregon; Barbara Hanses and Betty Swanson, Yakima; Emmett Casey, Montana, and Suzanne Burke, Pat Kiggins, Kathleen Humes and Bernard Smith from Central chapter.



Marg Richardson, Helen Larsen and Joan Underwood assure Dick Trousdale that he deserves the prize for the most unaccomplished skater at the SPEC "Cheap-Skate" Saturday night.

Wheels to Roll Saturday For Second Annual Skate

Saturday night, Nov. 8, is the time set for the second annual SPEC Cheap Skate. Scene for the "whirl" is the Ridge Roller Rink. With an admission price of 50c, skating lasts from 10:15 to 12:30 p.m. Located at 620 N. 85th Street, the rink can be reached by a No. 5 Phinney bus.

VARIETY SHOW OPENS

Tickets are now available for the Variety Show to be presented Nov. 18 to 21 at the Woman's Century Club.

Each ASSU card-holder is entitled to one free ticket to the show. These can be obtained only in the main hall in the LA Building and will not be issued during Retreat. Student Body cards will not be honored on performance nights. Those who wish to attend on a special night must get their tickets early.

Catholic women will meet at St. Joseph's Church, 732 - 18th Avenue North, where Father John Brolan, S.J., is scheduled to lead the retreat. Father Brolan gave the men's retreat last year. He taught at the novitiate at Los Gatos, Calif., and in the Philosophy Department at the University of San Francisco.

Conducting the retreat for Catholic men will be Father Giambastiani, S.J., former faculty moderator of athletics at the University of San Francisco. The men's retreat will be held at St. James' Cathedral, 804 Ninth Avenue.

Non-Catholics will meet in the Knights of Columbus Hall, 722 E. Union. Lectures will be by Father Thomas Sexton, of St. Joseph's Parish. These discussions will deal with the application of Christian principles in the practical problems of life.

The retreat program will be based on the spiritual exercises of St. Ignatius. Daily schedule includes Mass at 8:10 at St. Joseph, 8:15 at the Cathedral, and lectures at 9, 10, and 11, with the benediction following the last.

Notice

Important meeting of the Homecoming Decoration Committee will be held this noon in room 123.

Student Presidents Attend Conventions

John Kimlinger, ASSU president, will represent Seattle U at the regional conference of the Association of College Unions. The meeting is scheduled for today and tomorrow at Oregon State College in Corvallis, Oregon.

Purpose of the convention is to furnish student leaders with an opportunity to learn more about the educational resources of a college union and to share and solve their mutual problems.

The ASSU prexy left early this morning with a group of delegates from the University of Washington.

Women Prexies Convene

Mary Ellen Bergmann, AWSSU president, will attend a similar convention for women student government. It will be held at Washington State College in Pullman on November 7, 8, 9.

ART FACULTY PLANS ADDITIONAL COURSES

Art faculty of SU met Nov. 1 at the home of Mr. and Mrs. Richard J. Prash. Among those present at this first business meeting were Jacob Elshin, Nicholas Damascus, Douglas Bennett, Miss Geraldine Standaert, and Fr. Hayden Vachon.

Additional Courses, rearrangement of hours, and greater integration with other schools and departments were recommended at this meeting.

A dinner party on November 22 is set for the first social meeting of the year.

Extension



Because of the three-day Retreat next week, THE SPECTATOR will suspend publication. The next issue will appear the following week, on Nov. 20. Look for it then!

Now that the heat of elections is reducing to a simmer, we have a chance to turn our minds to other things. We've spent a good amount of time worrying about the welfare of our national and state government; next week, for three days, we have the opportunity to concentrate on personal government.

Much has already been said about the Retreat, so this will be short. . . . We know that we can't elect representatives to guarantee personal peace, order, and security. However, the general order of the nation can only emanate from these personal qualities. Making a good Retreat is just as important as voting, and just as much of a duty to ourselves and country.

Speaking of elections, it's a novel experience listening to returns deadline night in the SPEC office. Supporters' arguments would be cut short at a mild roar by a loud "Sh-h-h!" Jubilant and cynical eyes gazed at the same radio. The only ones who could maintain any equilibrium were Pogo supporters. Incidentally, the SPEC poll of last week was pretty accurate.

—YOUR EDITOR.

God's Will and My Retreat

To know why God wills that I make the annual retreat is to know the entire mystery of God's wonderful Providence in my regard. Why does God will that I spend these three days of my school year in the prayerful silence of retreat?

If we ask God Himself, as we should, He will tell us that the retreat which He is giving us is the most important exercise of the school year. It gives us the realization of the most necessary objectives of our entire life.

He made me to know Him; but only He Himself, in the silence of prayer, can really teach me the glorious Truth of Himself and of my unique relationship with Him. He gives me my retreat in order that He might Himself teach me those truths, without the living realization of which I am indeed an ignorant person, living my life in unreality.

God made me to love Him. Yet I will love Him, and thereby come to the possession of the real secret of my happiness, only in the degree that He Himself reveals to me the true nature of His Infinite Goodness. I must realize, in the depths of my heart, His eternal, personal love for me. My retreat is the means He has chosen to lay open before me the magnificent vision of His love for me, a love which urges and impels me to return love for love.

To love God, which alone is the basic answer to all my problems, the real solution to all my difficulties, is to serve God. In order to serve God I must have the light to see what His will in my regard is. I must have the strength to choose and embrace His will in all things. This Light to know His will, this strength to do His will—this is the fruit of my retreat. It is the fruit that Christ spoke of when He told me, "My peace I give to you, the peace that surpasses all understanding, the peace that the world cannot give."

My retreat is a gift of God's benevolent love, which He Himself purchased for me on the cross with His own most precious Blood. It is an external grace through which God Himself will come to me and teach me to know Him, to love Him, to serve Him.

I must not receive this grace of God in vain; I must make a good retreat. God wills it.

—REV. FRANCIS LINDEKUGEL

Sad Skate of Affairs

● JIM SABOL

All who plan to attend the second annual SPEC skating party next Saturday night are strongly urged to first read a newly published book on the subject, the contents of which are respectfully submitted herewith:

Chapter One—SAVE MONEY AND MAKE YOUR OWN SKATES

Cheap Sources of Cast Pewter . . . How To Operate a Lathe . . . Three Easy Ways To Make Ball-Bearings . . . Application and Use of Bubble Gum . . . A Reliable List of Roller Skate Dealers.

Chapter Two—LEARNING TO SKATE

Laws of Physics and Their Practical Applications . . . The Importance of Self-Confidence . . . How To Roll Gracefully When Hitting the Ground . . . The Proper Method of Holding Crutches.

Chapter Three—FINANCING THE PRICE OF ADMISSION

How To Court a Banker's Daughter . . . A Hot Tip on Lucky Lady in the 5th . . . Counterfeiting as a Hobby . . . The FBI in Peace and War.

Chapter Four—HOW TO MAKE A HIT AT THE RINK

Ways To Leap Over Fallen Skaters . . . Executing the Triple-Loop . . . Hints on Jumping Barrels . . . Popular Pastimes in the Hospital . . . How To Make the Insurance Company Pay Off.

Seattle University Spectator

Member of the NORTHWEST INTERCOLLEGIATE PRESS CONFERENCE
Official publication of the Associated Students of Seattle University. Published weekly on Thursdays during the school year, and twice quarterly during Summer School sessions. Editorial and business offices at Tenth and Madison Street, Seattle 22, Wash. Subscription rates, \$1.50 per year. Entered as third class matter.
National advertising representative: National Advertising Service, Inc., 420 Madison Ave., New York 17, N. Y.

PUBLICITY'S ROLE IN CAMPUS LIFE PROMPTED BY STUDENT BODY RULES

● GEORGE McMAGLADRY

As we rush madly up the stairs, attempting to reach our first class on time, our eyes are directed toward the windows on the stairwell. No, it's not the exquisite sunshine that this area bathes in that grasps our attention. Our senses perceive a mass of paper and color all

mixed with the agility that we connect with modernistic art.

Again we look, then stop (risking one-third of a cut) and attempt to evaluate this mass. We conclude that as it exists it must have a purpose. This conglomeration is publicity, an essential element of all SU-activities that strive for success.

Behind this matter we find intelligent beings that have schemed and planned for days how best to entangle the student body into their web. They have labored ceaselessly with pen and brush. They have scraped the depth of their minds in an attempt to entrap first your eyes, then your mind, and finally your will.

To allow order and regular arrangement to reign in our hallowed halls, we students are requested to conform to the following rules: No signs are allowed on the outside of buildings. No sign may be placed around the chapel on the second floor. Scotch tape may not be used on the walls. No signs may be hung on doors or lockers.

Thumbtacks are not allowed in the woodwork. Discretion should be used so that signs do not interfere with activity. All signs hung in the Cave must have Mrs. Anderson's permission. The ASSU has the right to remove any signs that they consider improper. All publicity should be removed when there is no longer any use for it.

Another space where mayhem has been the order of the day is the ASSU Bulletin Board. This sporadic assemblage is located between the Public Relations and Hiyu Coolee Bulletin Boards. A revolution is in progress to sectionalize this space. Organizations will be allotted their own area and a special section will be reserved for classified ads.

This reorganization is headed by Don Ley, ASSU sergeant-at-arms, and he will be in charge of approving all notices to be posted. Any notice posted without his approval will be removed.

How 'Bout It?

● JERRY SCHOENBERG

The SAC has burst forth from its cocoon. And I must say that it looks much better without its wooden trappings. Incidentally, a couple of suggestions have drifted in concerning the name of the new Student Union Building. Someone likes TEE-PEE or WIGWAM; what do you like?

There was only one thing wrong with the apple sale. Too bad they didn't have it slightly earlier. As you know, Friday was Hallowe'en. Therefore the demand for apples that you pay for had dropped somewhat by Tuesday.

You will still find a good use for them, though, students. Mid-quarters are this week; better get out your polishing cloths.

While we're on the subject of apples, — although I don't dislike them, why do people give nothing but apples to trick-or-treaters? I remember the time when you could get even chocolate bars and gumdrops. Now what do you get . . . an inevitable shiny red apple. What a meager haul I made this year! Twenty-three apples, six bags of popcorn, and a half-stick of Juicy-Fruit. Oh well, I guess people have just lost the spirit.

Grab your pillows, everyone, and be off. Saturday night is the "Cheap-Skate."

WANTED: Cameramen

● HUGH FERGUSON

S.U., Nov. 6 — Flash! Shutterbugs, attention! Marion Helenkamp, editor of the school yearbook, has issued a call for students who would like to contribute shots of informal campus life to the "Aegis." The need is great for candid cameramen who can supply Marion with informal snaps of different school activities.

Pictures most urgently needed are those which touch different aspects of school life, such as Buhr Hall confabs, life in the Cave, non-ritual glimpses of club activities, life at the halls, the hikes, etc. . . .

Any flash artists who are interested can turn their names and negatives into the SPEC office any time in the next two weeks. Any available pictures taken at the Barn Dance or the Hallowe'en mixer should be turned in as soon as possible.

● TOM TOWEY and JACK PETERSON

The Adventures of Kimchi Samurai



The Williams Shift

• AL WILLIAMS

The Huskies finally came through about as expected against OSC, but had Sam Baker been in shape, the Beavers could have made it closer. Baker is probably the best all-around ballplayer on the Coast. The deflated Golden Bears come to Seattle Saturday, and look for a real battle across the canal. Cal still has plenty left, and I think it will be enough to take the Huskies.

Down south, USC will roll over Stanford, UCLA will take OSC, and WSC will continue its upsurge against the dead Ducks. Back East, Purdue will edge Minnesota at Minneapolis; Wisconsin will whip Northwestern, and Ohio State will be too much for Pittsburgh. In the country's big TV battle, Oklahoma will power by Notre Dame in a high-scoring battle.

Penn will come through (for a change, I hope) against Georgia. Duke's Blue Devils will bounce back to take Navy. Gen. Neyland's Tennessee Vols will continue their comeback against LSU in New Orleans. In that weird Southwest Conference, Texas will outpass Baylor.

This sports department recently received a letter from the St. Louis University sports editor, proposing the formation of a Jesuit school all-American basketball team at the end of this season.

Athletic Publicity Director Jack Gordon received a similar letter from St. Louis University, and he favors following the Associated Press voting method whereby each editor lists three choices or more, with 10 points for first, six for second, and three for third, with honorable mention getting one point each. We believe this plan is the most feasible, and if anyone has any other suggestions leave them in the Pigskin Poll box.

... All broadcasts of SU games will be direct with the exception of the Eastern series, which will be recreated from wire reports. ... A Christmas gift suggestion from the Athletic Department—buy a season ticket to SU home games as a Christmas gift, or buy reserved seat tickets for separate games and give them in pairs, etc.

5-Point Cleaners

Across the Street from Campus—1112 BROADWAY



SAVE MONEY—SAVE TIME, TOO, BY GREYHOUND!

Go home or to visit friends for Thanksgiving by Greyhound for more friendly fun, less cost, greater comfort and convenience. You'll find there's a bus leaving almost any time you're ready to go—and you'll save money every mile of the way! On your trips to and from the campus—enjoy yourself by Greyhound... the friendly, relaxing way to travel!

from Seattle	one way	round trip
SPOKANE	\$6.65	\$12.00
BELLINGHAM	1.75	3.15
PORTLAND	3.30	5.95
OLYMPIA	1.45	2.65
YAKIMA	3.50	6.30
ELLENSBURG	2.60	4.70

[plus U. S. tax]



GREYHOUND BUS TERMINAL

Eighth & Stewart SEATTLE SEneca 3456

GREYHOUND



Jerry's Boys Mural Leaders

The past week's games were highlighted by two thrillers in which both the Suds and Jerry's Boys had to come from behind in the fading minutes with the winning margin.

Both of these teams are still unbeaten, which puts them in the role of favorites on a seven-game schedule.

The Dons and Oinkers each won a game by forfeit when the Jones and Vets Hall failed to produce the required six players at game time.

After the Tacoma Boys led, 6-0, on a pass from George Karpach to Bob Rovai, Jack Haigh threw to Bill Digleria to tie the score. Then Roy Barnes heaved one to Wynn Brindle for the winning point, 7 to 6.

Bob Drummey was the hero for the Suds as he picked up at BTAP fumble and ran about 40 yards to the winning touchdown, 25 to 21. The Ryan - Richards - Collins trio had previously piled up a commanding lead throughout, only to see it dwindle to 21 to 18 before Jerry's Boys racked up their third triumph. Pat Coyne accounted for three touchdowns when he passed to gluefingers: Drummey and Pat Moore.

More of the schedule follows:
Nov. 6—Tacoma Boys vs. Jones
Nov. 7—Dons vs. Suds
Nov. 10—B-T-A-P vs. Tac. Boys
Nov. 17—Vets' Hall vs. Dons
Nov. 18—Oinkers vs. The Jones

Early Games Rough; Frosh Slate Huskies



COACH AL BRIGHTMAN

Moving into the third week of practice, the SU varsity and frosh casaba squads continue to look speedy and sharp on the hardwood.

The varsity opens its season December 2 against the Central Washington Wildcats at the Civic Auditorium. On Dec. 5, PLC will come to Civic for the second test of the season. On Dec. 9, Brightman's boys travel to Olympia for the St. Martin's game.

Following these preliminaries, SU moves into its big-time schedule, meeting the Wyoming Cowboys at Edmundson Pavilion December 12 and 13. December 16 the AAU champion Peoria Caterpillars come to town, meeting SU at 7:30 on the Civic floor. The Chiefs then hit the road for the rest of 1952, meeting Oregon at Eugene on December 20 before flying to New York.

The Papoose schedule has also been announced and will consist of about 30 contests. Highlights include two games with the U. of W. yearlings, whom they tied and defeated last year, plus the regular Northwest League play and games with other colleges. The first part of the schedule is as follows:

Dec. 2—Olympic Col., Civic Aud., 6:15
Dec. 4—Val Kirk's Pharmacy, SU, 9:00
Dec. 5—PLC JV, Civic Auditorium, 6:15
Dec. 8—Federal Old Line, Seattle U, 9:00
Dec. 9—St. Martin's JV, Olympia, 6:15
Dec. 12—Sand Pt. Naval, Ed. Pavil., 6:15
Dec. 13—Everett JC, Edmund. Pav., 6:15
Dec. 15—Pacific Trails, Seattle U., 7:30
Dec. 18—Alpine Dairy, Seattle U, 9:00
Jan. 5—Renton A & B, Seattle U, 9:00
Jan. 8—Alpine Dairy, Seattle U, 9:00
Jan. 10—Paine Field, Civic Aud., 6:15
Jan. 15—Buchan's Bakery, Seattle U, 9:00
Jan. 19—Federal Old Line, Seattle U, 7:30
Jan. 20—PLC JV, Parkland, 6:15
Jan. 20—Pac. Luth. JV, Parkland, 6:15

Cheer Try-Outs

Cheer leading tryouts are slated for Monday, Nov. 10, at 7 p.m. in room 412, Buhr Hall.

Contestants will be judged on an individual basis, although they may compete as a member of a team.

The formula by which the persons will be judged is as follows:

1. One of the cheers must be of the locomotive type, while the others may be original, new or old.
2. A maximum of four cheers has been set for each team.

All who intend to compete should contact Pat Rice, chairman of the tryouts, or John Kimlinger before noon on Monday.

Pigskin Poll

Last Saturday's football games proved fairly easy for local prognosticators, with the exception of the Baylor-TCU tie and Illinois' win over Michigan. Other troublemakers were the Ole Miss win over LSU, Georgia Tech over Duke, and Texas over SMU.

The winner this week is Wayne Greer, who hit nine for 12. He missed the tie, Miss over LSU, and Texas over SMU. His 34-13 prediction of the Washington-OSC score made him winner over last week's winner, Jim Riconosciuto. Jim got nine right, but his score read 20-7 for Washington. Send in your guesses for the games below.

Incidentally, Chuck Guinasso outpicked his old rival, Al Brightman, and will attempt to wangle a free ceegee from H. A. He again challenges Al to beat him in this week's selections.

GAMES	Dick Trousdale	Tom Mahoney	Al Brightmn.	Chuck Guinasso
California at Washington	California 34-27	Wash. 14-7	Wash. 28-20	California 28-13
USC at Stanford	USC	USC	USC	USC
OSC at UCLA	UCLA	UCLA	UCLA	UCLA
WSC at Oregon	WSC	Oregon	WSC	WSC
Purdue at Minn.	Purdue	Purdue	Purdue	Purdue
Northw. at Wisc.	Wisconsin	Northwn.	Wisc.	Wisc.
Okla. at N. Dame	Ohio State	Ohio St.	Ohio State	Ohio St.
Georgia at Penn.	Okla.	Okla.	N. Dame	Okla.
Pitt. at Ohio St.	Georgia	Penn.	Penn.	Penn.
Navy at Duke	Duke	Duke	Duke	Duke
Tenn. at LSU	LSU	Tenn.	Tenn.	Tenn.
Texas at Baylor	Texas	Baylor	Baylor	Texas

COTTAGE CAFE

1501 E. Madison

Managed by FRED SCOTT, Class '50

Open Daily 6 a.m. - 2 a.m., except
Fri. and Sat., 6 a.m. - 3 a.m.

Hanan's Shoe Repair

For Quick Service on Shoes

1006 Madison

Repair While You Wait

Shoe Shine Parlor

Open 7:30 A. M. to 6:15 P. M.

Maryland Freeze

FISH 'N' CHIPS

and BEEFBURGERS

Shakes • Malts • Cones

15th and East Madison

EUROPE BY BICYCLE

Low-Cost Student Tours, Bus or Bike. Study Groups with College Credit. Mexico, So. America, Orient, Far West.

SITA STUDENTS' INTERNATIONAL TRAVEL ASSN.

Richard Wilkie, 5744 - 34th N.E., KE. 1852

Seattle U-ltes . . .



STOP HERE

for FAST SERVICE on Cleaning!

In Today-Out Tomorrow

MASTERPIECES OF CLEANING

by

MADISON MASTER CLEANERS

Madison at Minor

now... **PAGE GAGE** takes the guesswork out of page-end typing



\$15.00
DOWN
\$1.55
a Week

Smith-Corona

World's fastest PORTABLE

Broadway Bookstore
SEATTLE UNIVERSITY

Bachman Elected Mu Sig President; 18 Members Chosen

Bob Bachman was recently elected president of Mu Sigma, campus music honorary. Other officers are Pat Ingersoll, publicity chairman, and Peggy Mack, secretary, and Jack Johnson, vice president in charge of finances. Chairmen for the various events in which the club participates are Gwen Christy, A Cappella Choir; Pat Welch, Opera Guild.

Requirements for membership in Mu Sigma include high academic standing, participation in music activities and interest in school productions.

Eighteen students admitted to the organization are Gwen Christy, Don Chatterton, Marcia Dodson, Jackie McDonald, Bill Doyle, Jean Duskey, Madeline Bergmann, Jim Griffith, Pat Ingersoll, Barbara Johnson, Peggy Mack, Bill O'Donnell, Tom Stipeck, Larry Tofte, Vaughn Thomson, Keith Walters, and Patricia Welch.

These new members will join the former members to form the coordinating central body for the entire music department. Main purpose of the club is to combine the efforts of all individual performers and ensembles on campus for more outstanding musical performances.

ROTC UNIT APPROVED BY SIXTH ARMY TEAM

ROTC facilities and equipment were reviewed recently by members of a Sixth Army inspection team. Weapons, vehicles, fire control material, clothing and projection equipment were checked by team members and found to be in good condition.

The group stated that equipment inspected at this unit compared very favorably with that of other ROTC sections which they had visited.

Personnel of the team included Major McNemar, Captain Milam, Sergeant First Class Maynard, Mr. Molyneux, Mr. Bennett and Mr. Patrick.

CLASSIFIED

Lost something? Want something? Advertise in your SPECTATOR. Only 5 cents per line for students; 10 cents a line for those out of school.

FOR SALE

RESALE Smart Ladies' Apparel at fraction of original cost. Ruth's Apparel, 1408 - 18th Ave., Capitol 6221.

WEDDING CATERING

GETTING MARRIED? Complete reception service. Phone Mrs. Tharp, ME. 8115, or Mrs. Ruggles, LO. 3189.

ORCHESTRA

MILO HALL Orchestra, up to 10 pieces. For your small affair, use our combo. GARfield 7055.

Prof.: "A fool can ask more questions than a wise man can answer." Student: "No wonder so many of us flunk in our exams."—Colgate University Banter.

For a Good, Clean Wash . . .

SCHNEIDER'S

WASH-N-SHOP LAUNDROMAT

Next to Broadway A&P Store
525 BROADWAY NO.

J. W. Codling, M.D. Next CCD Speaker

"Morals and Medicine" will be the topic of a talk given by Dr. John W. Codling, Seattle physician, on Tuesday, Nov. 18, at 8 p.m., in room 118.

This is the second in a series of conferences sponsored by the Confraternity of Christian Doctrine, featuring the practical aspects of Christian living.

Dr. Codling, member of the King County Medical Society, Obstetrics and Gynecology, is very active in the Serra Club, Catholic laymen's organization. He is also a Fourth Degree Knight of Columbus and choir member of St. Mary's parish.

Group discussions, open to all SU students, will follow Dr. Codling's talk.

BROADWAY BOWLING ALLEYS

Noon to Midnight

219 Broadway No. MI. 5233
Phone for Reservations

CAMPUS CALENDAR

What	When
SPURS MEETING	November 6
SADIE HAWKINS TOLO	November 7
MID-QUARTERS	November 8-7
"CHEAP-SKATE"	November 8
IK MEETING	November 10
ARMISTICE DAY HOLIDAY	November 11
RETREAT	November 12-14

Attention . . . Seattle U. Students!

10% DISCOUNT upon Presentation of This Ad

ADMIRAL CLEANERS 1016 Madison

We Operate Our Own Plant • 6-Hour Service

GIFTS

Order Your Imprinted Christmas Cards Here . . .

DROP IN for • Gifts
• Greeting Cards
• Infants' Wear

WILSONS' FIRST-HILL GIFT SHOP
1219 Madison St.
BY-THE-HILL Gift Shop
1008 Terry Ave.

NOSE, THROAT,

and Accessory Organs not Adversely Affected by Smoking Chesterfields

FIRST SUCH REPORT EVER PUBLISHED ABOUT ANY CIGARETTE

A responsible consulting organization has reported the results of a continuing study by a competent medical specialist and his staff on the effects of smoking Chesterfield cigarettes.

A group of people from various walks of life was organized to smoke only Chesterfields. For six months this group of men and women smoked their normal amount of Chesterfields—10 to 40 a day. 45% of the group have smoked Chesterfields continually from one to thirty years for an average of 10 years each.

At the beginning and at the end of the six-months period each smoker was given a thorough

examination, including X-ray pictures, by the medical specialist and his assistants. The examination covered the sinuses as well as the nose, ears and throat.

The medical specialist, after a thorough examination of every member of the group, stated: "It is my opinion that the ears, nose, throat and accessory organs of all participating subjects examined by me were not adversely affected in the six-months period by smoking the cigarettes provided."

First Hill Floral Headquarters

P. J. CASE

Florist

1014 Madison Street

Catholic Supply and Gift Headquarters

Books and Lending Library

THE KAUFER CO.

1904 Fourth Ave., near Stewart

DON'T TOIL . . . RENT A ROYAL

Late Model Office Typewriters
on EASY TERMS

One Month \$4, Three Months \$9

Free Delivery, Pickup and
Service

Royal Typewriter Co.,
Incorporated

1000 Lenora St., Volker Bldg.
SEneca 4321

Announcing . . .

NEW SELF-SERVICE

Laundry

CLOSE TO CAMPUS

For a Cleaner Wash

**WHIRLPOOL AUTOMATIC
AGITATOR TYPE WASHER**

Open 8:30 A.M. to 9:00 P.M. Daily
8:30 A.M. to 6:00 P.M. Saturday
Closed Sundays

**15th North
Self-Service Laundry**

129 - 15th Ave. No. EAst 9655

ASK YOUR DEALER
FOR CHESTERFIELD—
EITHER WAY YOU
LIKE 'EM



★
CONTAINS TOBACCOS
OF BETTER QUALITY &
HIGHER PRICE THAN ANY
OTHER KING-SIZE
CIGARETTE

Buy CHESTERFIELD. Much Milder