

1994

1994 Bulletin of Information - Summer School

Seattle University

Follow this and additional works at: <http://scholarworks.seattleu.edu/bulletinofinformation>

Recommended Citation

Seattle University, "1994 Bulletin of Information - Summer School" (1994). *Bulletin of Information*. 151.
<http://scholarworks.seattleu.edu/bulletinofinformation/151>

This Bulletin is brought to you for free and open access by ScholarWorks @ SeattleU. It has been accepted for inclusion in Bulletin of Information by an authorized administrator of ScholarWorks @ SeattleU.

Scale the Summit.



Summer School 1994
Seattle University

Bulletin of Information

Contents

Seattle University

Bulletin of Information USPS 487-740
Published quarterly by Seattle University
Seattle, Washington 98122-4460
Second class postage paid
at Seattle, Washington

POSTMASTER: Send address changes to

Evening Studies, Continuing Education
and Summer School Office
Seattle University
Broadway and Madison
Seattle, WA 98122-4460

Seattle University is an equal opportunity/affirmative action employer. Seattle University does not discriminate on the basis of religion, race, color, national or ethnic origin, gender, or the presence of any sensory, mental, or physical handicaps in the administration of its admission and in its scholarship, loan, and work study programs. Inquiries relating to these policies may be referred to the university's assistant vice president for Human Resources and affirmative action officer.

Seattle University offers opportunities and experiences of higher education to all students equally without regard to race, religion, age, gender, or national origin. It does so in keeping with the guidelines and requirements of laws and regulations as promulgated by state and federal agencies.






Information concerning graduate and undergraduate programs may be obtained in supplementary bulletins.

This Summer School Bulletin of Information was produced by the Evening Studies, Continuing Education and Summer School Office and the Publications Office of Seattle University.



Printed on recycled paper

Six Reasons to Scale the Summit

Why do people climb Mount Everest? Because it's there. Why do people go to summer school? Here are just a few reasons: Teachers can renew their certificates or work on master's degrees for continuing certification.  Summer is the season for our SUMORE (summer only) and EMMAUS (summer plus weekends) programs, designed for lay ministers working on their master of arts in pastoral studies.  The Albers School of Business and Economics offers undergraduate and graduate classes from June through mid-September.  Busy professionals who work days can go to school in the evening to complete bachelor's or master's degrees in just a few years.  Undergraduate students enjoy the more relaxed style of going to school in the summer—while getting a head start on graduation.  And some decide to sign up for a class they've always wanted to take—just for fun—because it's there! Take advantage of those long summer days and explore new possibilities at Seattle University's Summer School.

Contents

Program Descriptions	4
Class Summaries	6
Course Descriptions	10
Admission	32
Registration	34
Tuition and Financial Aid	36
General Information	38
Campus Map	40
Application for Admission/Re-admission	41
Index	43

Scout Ahead of the Rest Undergraduate Students

Students working on their bachelor's degrees often attend Summer School to repeat courses, lighten their credit load in other quarters or have the opportunity to take electives for which they might not otherwise have time.

A wide choice of classes—including many core curriculum courses—is available during the summer quarter. Faculty instructors during Summer School are the same as during other quarters, and courses cover the same material for the same number of credits. Housing and financial aid are also available. Best of all, you can wear shorts to class!

Graduate Students

Options for graduate students include selected off-campus courses, evening or weekend courses and a variety of intensive workshops. Read on for further information and then contact the Graduate Admissions Office at (206) 296-5900 for an application.

Climb by Moonlight Evening Programs

Pursue your education after hours without interfering with your career or other daytime activities. Many undergraduate and most graduate courses are offered in the early afternoon or evening during the summer quarter. Courses that begin after 4 pm are highlighted in color.

More courses and logical sequencing make it possible for students in business, liberal studies, nursing, and public administration to earn bachelor's degrees from Seattle University in the late afternoon and evening. Extended hours in the Registrar's and Controller's Offices, as well as other service offices, allow evening students to conduct school business at times more convenient to their schedules.

Any undergraduate or graduate student satisfying the prerequisites may register for late afternoon or evening courses. Special permission is not required. Evening sections have the same content, faculty and academic quality as daytime sections.

For further information, write the Evening Studies, Continuing Education and Summer School Office, Seattle University, Broadway and Madison, Seattle, WA 98122-4460, or call (206) 296-5920.



Off-Campus Sites

Some Summer School courses in business are offered at off-campus sites in Bellevue and Everett. These are regular credit courses, taught by the same faculty members who teach on campus. Classes held off campus and listed in this publication are indicated in the course descriptions.

For more information about the Everett site, call (206) 290-7176 in Everett, or (206) 296-5700 in Seattle. For more information about the Bellevue site, call (206) 451-0200.

For More Detailed Information

Toll-free inside Washington 1-800-542-0833 • Toll-free outside Washington 1-800-426-7123

Addiction Studies Office 296-5350	College of Arts and Sciences 296-5300 Mon.-Fri., 8 am to 4:30 pm	Graduate School (see Admissions, Graduate) 296-5900	Registrar's Office 296-5850 Mon.-Tues., 8:30 am to 6 pm; Wed.-Fri., 8:30 am to 4:30 pm
Admissions, Graduate ... 296-5900 Mon.-Tues., 8 am to 6 pm; Wed.-Thurs., 8 am to 4:30 pm; Fri., 9 am to 4:30 pm	Controller's Office 296-5880	Institute for Theological Studies 296-5330 Mon.-Fri., 8 am to 4:30 pm	Residential Life Office (Resident Student Services) 296-6274
Admissions, Undergraduate 296-5800 Call for office hours	Counseling Center 296-6090 Mon.-Fri., 8 am to noon, 1 to 4:30 pm; Closed intersession	International Student Adviser 296-6260	Safety and Security Office 296-5990 Mon. and Tues. from 8:30 am to 6 pm; Wed.-Fri. from 8:30 am to 4:30 pm
Alumni Office 296-6100 Mon.-Fri., 8 am to 4:30 pm	Education, School of 296-5760	Library, A.A. Lemieux 296-6230 Mon.-Thurs., 8 am to 10 pm; Fri., 8 am to 5 pm; Sat., 10 am to 6 pm; Sun., 1 pm to 9 pm	Science and Engineering School of 296-5500 Mon. to Fri., 8 am to 4 pm
Bellarmino Hall 296-6280	Evening Studies, Continuing Education .. 296-5920	Matteo Ricci College 296-5405 Mon.-Fri., 8 am to 4:30 pm	Student Development 296-6060 Mon. to Fri., 8 am to 4:30 pm
Business and Economics, Albers School of 296-5700 Mon.-Fri., 8 am to 8 pm; Sat., 8:30 am to 4 pm	Summer School 296-5410 Mon.-Wed., 8:30 am to 6:30 pm; Thurs., Fri., 8:30 am to 4:30 pm	Minority Student Affairs Office 296-6070 Mon.-Fri., 8:30 am to 4:30 pm	
Campion Residence Hall 296-5600	Financial Aid Office 296-5840 Mon., Wed.-Fri., 8:30 am to 4:30 pm, Tues., 8:30 am to 6 pm	Nursing, School of 296-5660 Mon.-Fri., 8 am to 4:30 pm	
Campus Ministry 296-6075 Mon.-Fri., 8 am to noon, 1 to 4:30 pm	Liberal Studies 296-5310 Mon.-Fri., 8:30 am to 4 pm		

Program Descriptions

Explore as a Student for a Change

School of Education

Teachers seeking continuing certification to teach in Washington state must complete, post-baccalaureate, 45 quarter hours or 30 semester hours in upper division or graduate course work. Seattle University's School of Education focuses on graduate education, so we have the programs you need to renew your teaching certificate or earn your master's degree.

A number of scheduling choices are available: eight-week, four-week, and short courses (one- and two-week). And many of our students attend evening classes in summer, a popular option.

For more information, write to the School of Education, Seattle University, Broadway and Madison, Seattle, WA 98122-4460, or call (206) 296-5760.

Business-Minded Climbers Can Improve Their Vertical Rate of Ascent

Albers School of Business and Economics

For part-time students with full-time careers, the Albers School of Business and Economics offers accelerated undergraduate and graduate courses in time slots designed to fit their needs. Evening and weekend classes offered in Seattle, Bellevue, and Everett allow career-minded individuals

the opportunity to further their education after working hours. And, for the convenience of our evening students, offices of the Albers School of Business and Economics are open until 8 pm, Monday through Friday, and from 8 am to 4 pm on Saturday. Undergraduates will find our intersession courses apply to the business core curriculum. Our innovative summer scheduling offers a choice of courses that enable students to accelerate completion of their degrees.

For more information, write to the Albers School of Business and Economics, Seattle University, Broadway and Madison, Seattle, WA 98122-4460, or call (206) 296-5700.

Non-Credit Courses for Business Applicants

GMAT Preparation Course

For anyone considering application to the MBA program, this non-credit class is intended to increase your GMAT test scores through intensive instruction, using current GMAT materials. Classes are available in Seattle, Bellevue or Everett and are open to both matriculated and non-matriculated students. Register by phone through the Albers School of Business and Economics Office at (206) 296-5732. Fee: \$155.

Math Proficiency Course

This non-credit class, covering algebra and calculus for business applications, satisfies the mathematics proficiency requirements for the MBA program at Seattle University. Students may take this before entering the graduate program. Register through the Albers School of Business and Economics Office at (206) 296-5732. Prerequisite: College algebra or equivalent. Fee: \$270.

Climb to the Top of the Mount

Institute for Theological Studies

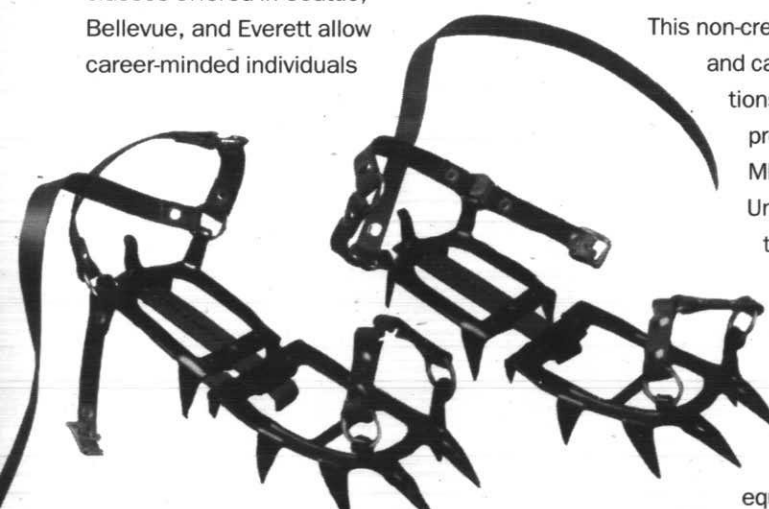
Students whose jobs keep them too busy during the year to attend classes can earn a master of arts in pastoral studies (MAPS) by attending classes summers only or by combining a two-week summer session with weekends during the rest of the year. SUMORE, the summer-only learning community, and EMMAUS, the summer-plus-weekend learning community, include teachers, social workers, counselors, and nurses, as well as parish ministers. All seek to enrich their spiritual life and interpersonal skills.

If you choose to attend all three two-week sessions during the new six week SUMORE summer session, you will complete course work for a master's degree in three summers. You can also design a three-year program that integrates fewer summer sessions, the weekend courses (EMMAUS) and the academic year courses (CORPUS). The MAPS degree offers you the option to design a general ministry preparation or to concentrate your electives in spirituality, ministry with aging, ecclesial ministry, religious education, and/or sacred universe.

Sacred Universe Program

Sacred universe classes meet a new and pressing demand for knowledge and skills related to ecology and spirituality. Currently there are four courses in this concentration which encourage understanding and dialogue on Christian values, cultural traditions, and new scientific paradigms. The two courses available again this summer are described under Christianity and Cosmos and Communion of Earth and Spirit.

For more information on the master of arts in pastoral studies (SUMORE, EMMAUS, or CORPUS), the sacred universe concentration, or other ITS degrees write the Institute for Theological Studies, Seattle University, Broadway and Madison, Seattle, WA 98122-4460, or call (206) 296-5330.



Culture and Language Bridge Program

The Culture and Language Bridge Program is a comprehensive 12-credit program for students whose first language is not English. It focuses on the development of all phases of academic English and helps students overcome cultural barriers that prevent them from full participation in the Seattle University experience. The courses are based on content and materials typical of Seattle University.

During the summer it is offered in a special nine-week term, from July 5 to August 31, to accommodate students who have recently arrived from other countries. It is mandatory for students with TOEFL scores of 520-550. However, students with TOEFL scores above 550 may take the program with the approval of the coordinator.

The program consists of 12 credits, five of which satisfy EN 101 Basic Writing and count toward graduation. The other seven credits of Academic Reading and Writing, Classroom Communication, and Language Lab do not count toward a degree program or graduation requirements.

For more information, contact the International Student Center at (206) 296-6260.

Discover for the Fun of It Something for everyone

Adult education improves your memory and comprehension, and gives you terrific conversational material. Choose from a wide selection of interesting topics for Summer School adventure.

Impress your friends with your grasp of film as art with our **Film and Literature** class, or delve into **Environmental Philosophy**. If classics are your passion, what better way to spend summer mornings than discussing

Masterpieces of Literature or Great Historical Figures?

Timely issues will be covered in such areas as the past achievements and future problems of **Health Care Ethics** and **Psychological Aspects of Aids**.

No prior experience is necessary for **Introduction to Computers and Applications**, which includes extensive hands-on instruction.

And while those on campus are taking part in the intensive foreign language classes in **French** and **Spanish**, the lucky ones will literally be **Journaling in Ireland** for two weeks.

Whatever your peak experience, there's a course for you this summer at Seattle University.



Elderhostel

Seattle University participates in the Elderhostel program, a major international educational movement for seniors 60 years of age or older. Seven one-week, low-cost, residential academic programs are offered on campus from June 19 to August 13.

Registration for residential students is made only through the Boston office.

To receive catalogs or register, call (617) 426-9389, or write to:

Elderhostel
75 Federal Street, Third Floor
Boston, Massachusetts 02110

Five spaces are reserved each week for commuters. To register, contact the Evening Studies, Continuing Education and Summer School Office at (206) 296-5920.

Seattle University

Seattle University is an independent, co-educational institution, operated under the auspices of the Society of Jesus. The faculty and staff include Jesuits as well as lay and religious people of various faiths.

The university is composed of nine major academic units (with 49 undergraduate programs, 18 graduate programs and one doctoral program). The academic units are the College of Arts and Sciences; Albers School of

Business and Economics; School of Education; School of Science and Engineering; School of Nursing; Matteo Ricci College; Graduate School; Institute of Public Service; and Institute for Theological Studies.

Seattle University is accredited by the Northwest Association of Schools and Colleges; National League for Nursing; American Chemical Society (chemistry); Council on Rehabilitation Education; Committee on Allied Health Education and Accreditation (diagnostic ultrasound, health

information administration); Accreditation Board for Engineering and Technology (civil, electrical and mechanical engineering); National Council for Accreditation of Teacher Education; and the American Assembly of Collegiate Schools of Business. It is also a member of the Independent Colleges of Washington, and its professional education programs are approved by the state Board of Education. Students completing these programs are eligible for certification as teachers (upon completion

of the master in teaching degree), principals, superintendents, counselors, reading specialists or school psychologists.

The Graduate School offers master's programs in business administration; psychology; public administration; counseling; adult education; teaching; educational administration; human resource development; theological studies; ministry; and software engineering. It also offers a doctoral program in educational leadership.

Class Summaries

course section	CRN	title/(credits)	term
Addiction Studies			
ADD 400	10016	Survey of Alcoholism (3)	8-week
ADD 401	10027	Pharmacology/ Physiology of Alcohol (2)	8-week
ADD 424	10038	Drug Abuse I: Social Aspects (2)	8-week
ADD 426	10040	Addiction and Mental Illness (2)	8-week

course section	CRN	title/(credits)	term
Biology			
BL 491E	12995	Marine Biology (5)	June 14-24
BL 491E	13211	Marine Botany (5)	June 28-July 8
BL 491E	13225	Ecomorphology (5)	July 12-22
BL 491E	13233	Forest Ecology (5)	July 26-August 5
BL 496		Independent Study (1-5)	Arranged

course section	CRN	title/(credits)	term
Business, Undergraduate			
ACC 230	10095	Principles of Accounting (Financial) (5)	8-week
ACC 231	10100	Principles of Accounting (Managerial) (5)	Intercession
ACC 331	10111	Intermediate Accounting I (5)	8-week
ACC 432	10125	Financial Statement Analysis (5)	8-week
BUSA 310	10133	Management Information Systems (5)	8-week
BUSA 370	10144	Business & International Law (5)	Intercession
BUSA 476	10157	International Law (5)	8-week
FIN 340	10166	Business Finance (5)	8-week
FIN 344	10179	Investments and Portfolio Theory (5)	8-week
IB 386	13793	International Business (5)	8-week
MGMT 380	10182	Principles of Management (5)	8-week
MGMT 382	10205	Organizational Behavior (5)	8-week
MGMT 482	10198	Business Policy and Organization (5)	8-week
MKTG 350	10218	Introduction to Marketing (5)	8-week
MKTG 351	10220	Consumer Behavior (5)	8-week
OP 360	10236	Manufacturing & Service Operations (5)	8-week
OP 466	10247	Project Management (5)	8-week

course section	CRN	title/(credits)	term
Business, Graduate			
ACC 503	10291	Financial Accounting (3)	8-week
ACC 513	10309	Managerial Accounting (3)	8-week
ACC 513	10314	Managerial Accounting (3)	8-week
ACC 531	10323	Financial Accounting Theory & Practice (3)	8-week
ACC 536	10337	Federal Taxation (3)	8-week
BUSA 500	10346	Management Information Systems (3)	8-week
BUSA 500	10358	Management Information Systems (3)	Intercession
BUSA 502	10360	Legal Environment (3)	8-week
BUSA 506	10371	Production & Operations Management (3)	8-week
BUSA 511	10385	Management Science (3)	8-week
BUSA 520	10392	Business Responsibilities/Ethics (3)	8-week
BUSA 520	10406	Business Responsibilities/Ethics (3)	Intercession
BUSA 576	10419	International Law (3)	Intercession
BUSA 591C	13062	Database Management (3)	Intercession
BUSA 591C	13077	Operations Strategy (3)	8-week
EC 501	10441	Introductory Business Statistics (3)	8-week
EC 517	10453	Macro-economic Analysis (3)	8-week
EC 517	10464	Macro-economic Analysis (3)	8-week
EC 527	10470	Managerial Economics (3)	8-week
EC 563	10488	Survey Research Methods and Experimental Design (3)	8-week
EC 575	10497	Health Care Economics & Finance (3)	8-week
FIN 504	10503	Introduction to Financial Management (3)	8-week
FIN 514	10512	Managerial Finance (3)	8-week
FIN 545	10529	Speculative Financial Markets (3)	8-week
FIN 546	10530	International Finance (3)	8-week
FIN 591C	13008	Personal Financial Planning (3)	8-week
IB 519	10548	International Business Enterprise (3)	8-week
MGMT 508	10556	Principles of Management (3)	8-week
MGMT 508	10567	Principles of Management (3)	8-week
MGMT 518	10575	Advanced Organizational Behavior (3)	8-week
MGMT 518	10581	Advanced Organizational Behavior (3)	Intercession
MGMT 585	10594	Management of Change (3)	8-week
MGMT 586	10608	Entrepreneurship (3)	8-week
MGMT 588	10613	Negotiations (3)	8-week
MGMT 590	10624	Business Policy (3)	8-week
MGMT 590	10631	Business Policy (3)	Intercession
MGMT 591C	13086	Management for the 21st Century (3)	Intercession
MGMT 591C	13090	American Manufacturing Mgmt in 1990s (3)	Intercession
MGMT 591C	13105	International Management (3)	8-week
MGMT 591C	13118	Business Communications (3)	8-week
MGMT 591C	13120	Global Culture and International Business (3)	Intercession
MKTG 505	10690	Marketing Principles (3)	8-week
MKTG 515	10707	Marketing Management (3)	8-week
MKTG 515	10715	Marketing Management (3)	8-week
MKTG 551	10721	Consumer Behavior (3)	8-week

Your Key to Abbreviations

First 4-week First four-week term, June 20 to July 16

Second 4-week Second four-week term, July 18 to August 13

7-week Seven-week session, June 20 to August 6

8-week Eight-week session, June 20 to August 6

Intercession August 15 to September 12

Complete course descriptions begin on page 10

Seattle University reserves the right to cancel any class without prior notice. All classes offered in this schedule that begin at 4 pm or later are indicated in color.

	June	July	August	September
Seven-Week Session				
Eight-Week Session				
First Four-Week Term				
Second Four-Week Term				
Intercession				

course section	CRN	title/(credits)	term
Chemistry			
CH 102	10052	Introduction to Organic & Biochemistry (5)	8-week
CH 123	10069	General Chemistry 3 (4)	First 4-week
CH 133	10074	General Chemistry Lab 3 (1)	First 4-week
CH 260	10083	Laboratory Safety (2)	Second 4-week

Computer Science

CSC 103	10832	Introduction to Computers (5)	8-week
CSC 103	10849	Introduction to Computers (5)	8-week

Criminal Justice

CJ 110	13807	Introduction to Criminal Justice (5)	8-week
CJ 391E	13031	Social and Criminal Justice: Crime & Personality (5)	8-week

Culture and Language Bridge Program

EN 101	10804	Basic Writing (CLB) (5)	Special 9-week
ESL 087	11930	Academic Reading and Writing (3)	Special 9-week
ESL 088	11948	Classroom Communication (3)	Special 9-week
ESL 089	11956	Language Lab (1)	Special 9-week

course section	CRN	title/(credits)	term
Diagnostic Ultrasound			
US 396		Independent Study (1-5)	Arranged
US 473	11361	Clinical Orientation to Ultrasound (10)	8-week
US 474	11376	Clinical Experience in Ultrasound (8)	8-week
US 483	11387	Ultrasound Seminar (2)	8-week
US 483	11393	Ultrasound Seminar (2)	8-week
US 484	11409	Basic Science of Ultrasound (2)	8-week

Economics

EC 260	10254	Business Statistics (5)	8-week
EC 271	10263	Principles of Economics -Macro (5)	8-week
EC 330	10289	International Economic Events & Business (5)	8-week

Education

ED 412	12797	Practicum: Early Childhood Education (3)	Second 4-week
ED 422	12320	Parents & Professionals (3)	First 4-week
ED 424	12336	Introduction to Mild Handicaps (3)	First 4-week
ED 425	12808	Introduction to Special Education (3)	Second 4-week
ED 428	12813	Language Development (3)	Second 4-week

course section	CRN	title/(credits)	term
ED 491C	13189	Curriculum Design: Gifted (3)	August 1-12
ED 491C	11414	Math for Elementary Teachers (5)	8-week
ED 491C	13172	The Shape of Jesus in Your Religion Class (3)	June 20-24
ED 492	13326	Ethical Leadership in Catholic Schools (3)	August 1-5
ED 493C	13191	Ethics & The School Administrator (3)	August 1-5
ED 500	12363	Introduction to Research & Graduate Study (3)	First 4-week
ED 500	12824	Introduction to Research & Graduate Study (3)	Second 4-week
ED 501	12389	Philosophy of Education (3)	First 4-week
ED 515	12831	Multicultures (3)	Second 4-week
ED 521	11967	Adult Psychology/Learning (3)	8-week
ED 521	12407	Adult Psychology/Learning (3)	First 4-week
ED 522	12415	Child Psychology/Learning (3)	First 4-week
ED 523	12845	Adolescent Psychology/Learning (3)	Second 4-week
EDAD 559	12859	The American Community College (3)	Second 4-week
EDAD 561	12439	Women as Transformational Leaders (3)	First 4-week
EDAD 564	11423	Administrative Internship I (2)	8-week
EDAD 565	11437	Administrative Internship II (2)	8-week
EDAD 566	11446	Administrative Internship III (2)	8-week
EDAD 570	11458	Leadership in Education I (3)	8-week

Important Dates for Your Log

April 1

Summer residence hall registration forms are available from the Residential Life Office.

Summer financial aid application

forms are available from the Financial Aid Office (this is in addition to the Free Application for Federal Student Aid).

May 1

Deadline for graduate and undergraduate international applications for summer programs.

May 18*

Touchtone registration begins. (For details see page 34.)

May 20

Deadline for undergraduate and graduate applications for summer programs.

June 15

Deadline for tuition and fee payment for all classes, including intersession.

June 20

Classes begin for seven-week session, eight-week session and first four-week term.

Last day to drop courses with 100 percent refund for the first four-week term.

Last day to add/drop for short classes (anything shorter than four weeks) is the day of the first class meeting.

Residence halls open.

June 25

Deadline for summer alumni audit fees and applications.

June 26

Last day to add/drop for seven-week session, eight-week session and first four-week term.

Touchtone registration closes.

July 4

Independence Day (no classes, except for ITS)

July 5

Last day to withdraw from first four-week term.

July 18

Classes begin for second four-week term.

July 18 to 22

In-person registration for second four-week term.

July 22

Last day to add/drop for second four-week term.

July 29

Last day to withdraw from second four-week term, and seven- and eight-week session.

August 13

Residence halls close.

August 15

Classes begin for intersession.

August 17

Last day to add/drop for intersession.

August 19

Last day to withdraw from intersession.

September 5

Labor Day (no classes)

*Touchtone registration for summer will not be available May 21 through June 4, during advance registration for fall quarter. The system will reopen for summer registration on June 5.

Class Summaries

course section	CRN	title/(credits)	term
EDAD 572	11460	The Principalship (3)	8-week
EDAD 580	11471	Higher Education Law (3)	8-week
EDAD 584B	12442	Washington School Law (2)	First 4-week
EDAD 584C	12468	Washington School Law (3)	First 4-week
EDAD 586	12473	Professional Personnel (3)	First 4-week
EDAD 587	12862	Community Relations (3)	Second 4-week
EDAD 595	11485	Administrative Graduate Project (3)	8-week
EDAD 596		Administrative Independent Study (1-3)	8-week
EDAE 510	12484	Planning Programs for Adult Learners (3)	First 4-week
EDAE 566	11508	Internship in the Adult Setting (1-3)	8-week
EDAE 567	11513	Internship in the Adult Setting (1-3)	8-week
EDAE 568	12496	Administration of Adult Programs (3)	First 4-week
EDAE 595	11524	Adult Education Graduate Project (3)	8-week
EDAE 596		Adult Education Independent Study (1-3)	8-week
EDCI 510	12877	Basics of Curriculum & Instruction (3)	Second 4-week
EDCI 512	12886	Seminar: Instructional Effectiveness (3)	Second 4-week
EDCI 513	12500	Supervision of Instruction (3)	First 4-week
EDCI 525	12511	Seminar in Teaching of Reading (3)	First 4-week
EDCI 526	12890	Reading in Content Fields (3)	Second 4-week
EDCI 527	12525	Corrective Techniques in Teaching Reading (3)	First 4-week
EDCI 528	12533	Reading Practicum Workshop (3)	First 4-week
EDCI 529	12544	Field Practicum in Reading (6)	First 4-week
EDCI 531	12557	Curriculum for the Gifted: Development and Modification (3)	First 4-week
EDCI 532	13013	Psychosocial Development of Gifted Students (3)	Second 4-week
EDCI 543	12901	Seminar in Behavior Disorders (3)	Second 4-week
EDCI 546	12916	Class Room Management (3)	Second 4-week
EDCI 554	11545	Diagnosis & Prescription (3)	8-week
EDCI 591C	12566	Assessment and the IEP (3)	First 4-week
EDCI 591C	12927	Instructional Media (3)	Second 4-week
EDCI 591C	13429	Learning Through Movement (3)	June 20-July 1
EDCI 591C	12770	Teaching Reading with Children's Literature (3)	First 4-week
EDCI 595	11559	Curriculum Graduate Project (3)	8-week
EDCI 596		Curriculum Independent Study (1-4)	8-week
EDCN 508	13136	Washington Law for School Counselors & Psychologists (3)	8-week

course section	CRN	title/(credits)	term
EDCN 509	12579	Developmental School Counseling (3)	First 4-week
EDCN 512	11577	Career Counseling and Information Sources (3)	8-week
EDCN 515	12582	Loss and Grief (3)	First 4-week
EDCN 517	11586	Group Counseling Theories and Practice (3)	8-week
EDCN 552	11590	Individual Counseling Practicum I (3)	8-week
EDCN 558	11605	Community Mental Health Practice (3)	8-week
EDCN 564	11618	Counseling Internship I (4)	8-week
EDCN 565	11857	Counseling Internship II (4)	8-week
EDCN 565	11981	Counseling Internship II (4)	8-week
EDCN 566C	13147	Counseling Internship III (3)	8-week
EDCN 591C	13154	Ethics in Counseling (3)	8-week
EDCN 595	*	Counseling Graduate Project (3-6)	8-week
EDCN 596		Counseling Independent Study (1-3)	8-week
EDDR 600	12719	Workshop in Educational Leadership (9)	July 11-August 5
EDDR 604	12598	Workshop in Organizational Development & Change (3)	First 4-week
EDDR 605		Independent Study in Educational Leadership (1-5)	8-week
EDDR 606		Independent Study in Educational Leadership (1-5)	8-week
EDDR 607		Independent Study in Educational Leadership (1-5)	8-week
EDDR 608	*	Internship in Educational Leadership (1-9)	8-week
EDDR 609	*	Superintendent Internship (1-9)	8-week
EDDR 610	*	Doctoral Project (1-14)	8-week
EDDR 613	12099	Project Continuation (0)	8-week
EDDR 649	12103	Doctoral Enrollment (0)	8-week
EDMT 520	12604	Community Internship (2)	First 4-week
EDMT 535	12938	Child Abuse and Related Issues (1)	First 4-week
EDMT 535	12940	Child Abuse and Related Issues (1)	First 4-week
EDMT 540	12610	Reflective Teaching Seminar (3)	First 4-week
EDMT 540	12628	Reflective Teaching Seminar (3)	First 4-week
EDMT 542	12952	MIT Research Project (1)	First 4-week
EDMT 543	12969	MIT Research Project (1)	First 4-week
EDMT 544	12632	MIT Research Project (1)	First 4-week
EDMT 544	12649	MIT Research Project (1)	First 4-week
EDSD 564	12237	Internship in Student Development Administration I (1)	8-week
EDSD 565	12260	Internship in Student Development Administration II (1)	8-week

course section	CRN	title/(credits)	term
EDSD 566	12285	Internship in Student Development Administration III (1)	8-week
EDSD 576	12655	Organization & Governance of Post-Secondary Education (3)	First 4-week

English

EN 101	10810	Basic Writing (ESP) (5)	Intersession
EN 110	10934	Freshman English (5)	7-week
EN 120	10965	Masterpieces of Literature (5)	7-week
EN 120	10978	Masterpieces of Literature (5)	7-week
EN 120	10999	Masterpieces of Literature (5)	7-week
EN 201	11006	Advanced Grammar and Vocabulary (5)	7-week
EN 388	11019	Film and Literature (5)	7-week
EN 391E	11035	Religious Experience in Autobiography and Story (5)	7-week
EN 391E	11041	Creative Writing (5)	Second 4-week
EN 391E	11053	Journaling in Ireland (5)	2-week

Fine Arts

ART391E	13868	The Art of Greece: Ancient and Byzantine (5)	June 7 to July 4
FA 120	10742	Experiencing the Arts (5)	7-week
MU 110A	10768	Piano Lessons (1)	8-week
MU 110B	10773	Piano Lessons (2)	8-week
MU 111A	10784	Vocal Lessons (1)	8-week
MU 111B	10796	Vocal Lessons (2)	8-week
MU 140	10750	Beginning Voice Class (1)	8-week

Foreign Language

SP 115	11116	Spanish I (5)	June 20 to July 7
SP 125	11127	Spanish II (5)	July 8 to July 26
SP 135	11138	Spanish III (5)	July 27 to Aug. 12
FR 115	11070	French I (5)	June 20 to July 7
FR 125	11088	French II (5)	July 8 to July 26
FR 135	11097	French III (5)	July 27 to Aug. 12

General Science

ISC 120	12983	Introduction to Geology (5)	8-week
ISC 480E	11866	Environmental Philosophy (5)	7-week

History

HS 120	10861	Origins of Western Civilization (5)	7-week
HS 121	10902	Studies in Modern Civilization (5)	8-week
HS 121	10887	Studies in Modern Civilization (5)	First 4-week
HS 121	10893	Studies in Modern Civilization (5)	7-week
HS 393E	13059	Historical Geography (5)	7-week
HS 419	13351	Great Historical Figures	7-week

* See Course Descriptions for course reference number (CRN)

	June	July	August	September
Seven-Week Session	■	■	■	
Eight-Week Session	■	■	■	
First Four-Week Term	■	■		
Second Four-Week Term		■	■	
Intersession			■	■

course section	CRN	title/(credits)	term
Institute of Public Service			
PUB 512	12246	The Implementation Process (3)	8-week
PUB 521	12258	Human Resource Leadership (3)	8-week
PUB 531	12271	Management Analysis and Control II (3)	8-week
PUB 540	12292	Policy and Program Research (3)	8-week
PUB 570	12318	Economic Analysis (3)	8-week
PUB 585	12391	Management of Change (3)	8-week
PUB 591C	12354	Labor Law and Collective Bargaining (3)	8-week
PUB 592C	12372	Strategic Management of Public Organizations (3)	8-week
PUB 593C	12421	Cross-Cultural Bureaucratic Systems (3)	Intersession

Institute for Theological Studies SUMORE

ITSA 596		Independent Study (1-6)	Arranged
ITSA 599	*	MDiv Completion Project (3-6)	Arranged
ITSM 500	11169	Christian Anthropology (3)	Aug. 1 to Aug. 12
ITSM 502	11800	Ecclesiology (3)	Aug. 1 to Aug. 12
ITSM 505	11811	Sacramental and Liturgical Theology (3)	Aug. 1 to Aug. 12
ITSM 529	11825	Biblical Spirituality (3)	July 18 to July 29
ITSM 548	11844	Theological Reflection in Ministry (3)	July 4 to July 15
ITSM 549	11879	Interpersonal Process (2)	July 4 to July 15
ITSM 550	11882	Conflict Resolution (3)	July 18 to July 29
ITSM 551	11898	Organizational Dynamics (3)	July 4 to July 15
ITSM 555	11903	Practicum I (2)	July 18 to July 22
ITSM 556	11912	Practicum II-A (2)	July 8 and 15
ITSM 556	11929	Practicum II-B (2)	July 22 and 29
ITSM 561	12129	Prayer and Spirituality (3)	Aug. 1 to Aug. 12
ITSM 563	12175	History of Christian Spirituality (3)	July 18 to July 29
ITSM 581	12130	Teaching and Learning in the Faith Community (3)	July 14 to July 15
ITSM 582	12148	Developing Religious Imagination (3)	July 18 to July 29
ITSM 585	12156	Perspectives on Aging (2)	July 4 to July 15
ITSM 586	12167	Issues in Aging: Ethics and Moral Decisions (2)	July 18 to July 19
ITSM 592B	12764	U.S./Hispanic American Theology (2)	Aug. 1 to Aug. 12
ITSM 594B	12214	Communion of Earth and Spirit (2)	Aug. 1 to Aug. 5
ITSM 594C	12223	Christianity and Cosmos (3)	July 18 to July 29
ITSM 598	12194	Independent Study (1-6)	Arranged
ITSM 599	12181	Completion Project (3)	Arranged

* See Course Descriptions for course reference number (CRN)

course section	CRN	title/(credits)	term
Interdisciplinary Social Science			
ISS 120	10951	Social Science Inquiry (5)	7-week
Mathematics			
MT 130	11140	Elements of Calculus for Business (5)	First 4-week
MT 222	11152	Discrete Structures (5)	7-week
Military Science			
MS 296C	12741	Independent Study (3)	8-week
MS 315	12753	Advanced Camp (4)	8-week

Philosophy

PL 110	11654	Introduction to Philosophy and Critical Thinking (5)	First 4-week
PL 110	11663	Introduction to Philosophy and Critical Thinking (5)	8-week
PL 210	11672	Philosophy of the Human Person-Bridge (5)	First 4-week
PL 210	11689	Philosophy of the Human Person-Bridge (5)	7-week
PL 210	11691	Philosophy of the Human Person-Bridge (5)	8-week
PL 210	11239	Philosophy of the Human Person-Bridge (5)	Intersession
PL 220	11242	Philosophy of the Human Person (5)	7-week
PL 220	11273	Philosophy of the Human Person (5)	7-week
PL 220	11284	Philosophy of the Human Person (5)	8-week
PL 220	11296	Philosophy of the Human Person (5)	Second 4-week
PL 260	11304	Logic (5)	8-week
PL 306	11726	Philosophy and Psychology (5)	Second 4-week
PL 309	11734	Environmental Philosophy (5)	7-week
PL 345	11743	Ethics (5)	7-week
PL 345	11310	Ethics (5)	7-week
PL 345	11328	Ethics (5)	First 4-week
PL 345	11332	Ethics (5)	8-week
PL 345	11355	Ethics (5)	Second 4-week
PL 345	11620	Ethics (5)	Intersession
PL 345	11636	Ethics (5)	Intersession
PL 352	11647	Health Care Ethics (5)	8-week
PL 367	11702	Gender and Social Reality (5)	7-week
PL 391E	11717	Frankl and Scheler (5)	Second 4-week

Physics

PH 101	11174	Introduction to Astronomy (5)	7-week
PH 201	11183	Electricity and Magnetism (5)	7-week
PH 202	11195	Waves, Optics and Thermodynamics (5)	7-week



Political Science

PLS 210	10980	Local and State Politics (5)	8-week
PLS 305	11022	Policy Process (5)	8-week
PLS 393E	11064	Cowboys and Indians (5)	8-week
PLS 493B	11101	European Community (2)	7-week

Psychology

PSY 120	11207	Introduction to Psychology (5)	7-week
PSY 220	11215	Individual and Society (5)	7-week
PSY 391E	11221	Humanistic Psychology (5)	First 4-week
PSY 391E	12112	Psychological Aspects of AIDS (5)	Second 4-week
PSY 391E	12735	Philosophy and Psychology (5)	Second 4-week

Sociology

SC 391E	11250	Sex, Lies, and Greed: Deception and Desire in Our Lives (5)	First 4-week
SC 480E	11268	Gender and Social Reality (5)	7-week

Software Engineering

SE 502	10855	Discrete Mathematics for Software Engineers (3)	8-week
--------	-------	---	--------

Theology and Religious Studies

RS 211	11751	The Gospel of Jesus Christ (5)	7-week
RS 217	11765	The Message of Paul (5)	7-week
RS 267	11778	History of Religions (5)	First 4-week
RS 293E	12450	Religious Experience in Autobiography and Story (5)	7-week
RS 301	13317	Women and Theology (5)	8-week
RS 338	11799	Human Sexuality: The Challenge of Love (5)	Second 4-week
RS 393E	12788	Stories of God and Human Transformation (5)	7-week

Course Descriptions

Your Key to Abbreviations

ADM	Administration Building
BA	Bannan Building
BELLEVUE	Bellevue Location
CA	Campion Residence Hall
CC	Connolly Center
CRN	Course Reference Number
ENGR	Engineering Building
EVERETT	Everett Location
FA	Fine Arts Building
GEL	Gene E. Lynn Building
LL	A.A. Lemieux Library
NOC	Not on Campus
P	Pigott Building
SU	Sunday
M	Monday
T	Tuesday
W	Wednesday
Th	Thursday
F	Friday
S	Saturday

First four-week term classes are held from June 20 to July 16

Seven-week session classes are scheduled for 70-minute blocks and are held from June 20 to August 6.

Eight-week session classes are scheduled for 60-minute blocks and are held from June 20 to August 13.

Second four-week term classes are held from July 18 to August 13

Short classes meet daily unless otherwise noted. Dates are listed under course description.

Intersession classes are held from August 15 to September 12.

Seattle University reserves the right to cancel any class without prior notice. All classes offered in this schedule that begin at 4 pm or later are indicated in color.

Addiction Studies

ADD 400 Survey on Alcoholism (3)

8-week/5:15-6:50 pm/MW

History, scope, physiological, and family aspects of alcohol problems. Also covers: Drunk driving, progression, symptoms, causality, treatment, and prevention. XPSY 490. Core Interdisciplinary.
Morris/ADM 20710016

ADD 401 Pharmacology/Physiology of Alcohol (2)

8-week/7-9:05 pm/T

Ingestion, absorption, metabolism, behavioral effects at different blood levels. Damage to brain, liver and other organs.
Scratchley/ADM 20710027

ADD 424 Drug Abuse 1: Social Aspects (2)

8-week/4:45-6:50 pm/T

History, scope, and classification of drugs of abuse. Also covers: Patterns of use, abuse, and legal aspects; treatment, rehabilitation and recovery.
Morris/ADM 20710038

ADD 426 Addiction and Mental Illness (2)

8-week/7-9:05 pm/W

Dual diagnosis: When psychiatric disorders coexist with addiction. Psychiatric terminology, clinical symptoms of mental illness; use of DSM-III-R in differential diagnosis; treatment and referral.
Scratchley/ADM 20710040

Biology

Blakely Island Courses: Study at the Thomas B. Crowley Laboratory on Blakely Island in the San Juan Islands of North Puget Sound. These 10-day intensive courses combine lectures, laboratory and field work. Plane passage to the island from Anacortes Airport provided. For information on room and board fees, contact Dr. David C. Brubaker, Biology Department, Seattle University, (206) 296-5485.

BL 491E Marine Biology (5)

2-week, June 14 to 24/MTWThF

Field study of the inter-relationships of marine plants and animals within their environment. Laboratory and field work will include application of ecological techniques to a specific problem and a written report describing results. Prerequisite: one year of general biology or equivalent.
Brubaker/NOC 00112995

BL 491E Marine Botany (5)

2-week, June 28-July 8/MTWThF

Field study of the inter-relationships of marine plants and animals within their environment. Laboratory and field work will include application of ecological techniques to a specific problem and a written report describing results. Prerequisite: one year of general biology or equivalent.
Nelson/NOC 00113211

BL 491E Ecomorphology (5)

2-week, July 12-22/MTWThF

This course provides the opportunity for field observations and investigations focusing on this single topic. Examination of relationships between the environment and structure, functional design and behavior of organisms. Prerequisite: one year of general biology or equivalent.
Ridgway/NOC 00113225

BL 491E Forest Ecology (5)

2-week, July 26-August 5/MTWThF

Examines the organisms that comprise the forest ecosystem and their interaction with the physical environment. Emphasis will be placed on field study of population dynamics, composition and function of the forest community, and the forest as biologically modified habitat. Prerequisite: one year of biology or the equivalent.
Congdon/NOC 00113233

BL 496 Independent Study (1-5)

Arranged

Staff/NOC 001

Addiction Studies to Business Administration (Undergraduate Intercession and 8-week Session)

Business Administration

Undergraduate Courses

Intercession 8/15-9/12

ACC 231 Principles of Accounting 2 (Managerial) (5)

Intercession/5:35-8 pm/MTWTh

Introduction to the use of accounting information for decision-making in planning and controlling the operation of business organizations. Prerequisite: ACC 230 and sophomore standing.

Hafford/P 351 **10100**

BUSA 370 Business and International Law (5)

Intercession/1:10-3:40 pm/MTWTh

The course will include traditional legal issues, including nature and development of law, structure and functions of the courts, civil and criminal procedure, and contracts. The course will focus on the legal environment that exists for U.S. businesses because of the increased international business activities. Prerequisites: junior standing.

Staff/P 351 **10144**

8-week Session 6/20-8/13

ACC 230 Principles of Accounting (Financial) (5)

8-week/5:35-8 pm/MW

Introduction to financial accounting concepts with emphasis on the development of the student's ability to understand and interpret financial statements of business entities. Prerequisite: sophomore standing. Business Core.

Staff/P 351 **10095**

ACC 331 Intermediate Accounting I (5)

8-week/4:30-7 pm/TTh

Theory and development of accounting principles; evolution of theory as it relates to the current state of accounting for the assets of the entity and the measurement and reporting of periodic income. Introduction to international accounting issues.

One third of the class time will be devoted to written and oral communications skill development. Prerequisites: ACC 231 and junior standing.

Hafford/P 353 **10111**

ACC 432 Financial Statement Analysis (5)

8-week/5:35-8 pm/MW

Develop an understanding of the tools and techniques used in the analysis of financial statements. Covers use and application of financial statements in decision-making, both internally and by investors and creditors. Liquidity and profitability analysis will be examined.

Emphasis on development of oral and written communications skills. Prerequisites: ACC 230, 231 and FIN 340.

Staff/P 353 **10125**

BUSA 310 Management Information Systems (5)

8-week/5:35-8 pm/MW

Examination of background management elements related to data processing systems. Planning and design of information flows and business systems. Prerequisite: CSC 103 and junior standing. Business Core.

Bird/BELLEVUE **10133**

BUSA 476 International Law (5)

8-week/5:35-8 pm/MW

Course includes a study of various problems in doing business in foreign countries. Emphasis is placed on the legal problems/issues of firms operating in Canada and other Pacific Rim countries as well as foreign firms doing business in the United States. Prerequisite: BUSA 270.

Staff/P302 **10157**

FIN 340 Business Finance (5)

8-week/7:50-10:20 am/TTh

Study of the financial policies and practices of business firms: of funds, financing growth. Prerequisite: EC 271, ACC 231, junior standing. Business Core.

Carrithers/P 302 **10166**

FIN 344 Investments and Portfolio Theory (5)

8-week/5:35-8 pm/TTh

An introduction to the theory of investments and a review of empirical research in the area. Emphasis is on risk/return relationship. Topics to be covered include: modern portfolio theory, asset pricing, the pricing of contingent claims, taxes, inflation and investments, and market efficiency. Prerequisite: FIN 340.

Staff/ENGR 305 **10179**

IB 386 International Business (5)

8-week/5:35-8 pm/TTh

Addresses the differences in finance, accounting, marketing and management in an international environment; with specific attention to cultural changes occurring in the international environment. Analysis of business organization roles of multinational corporations, methods of serving foreign markets, political risk assessment.

Prerequisite: MGMT 380

Marsh/ENGR 311 **13793**

MGMT 380 Principles of Management (5)

8-week/7:50-10:20 am/MW

Introductory survey of field of management including organizational theory, behavior, development, strategy, and human resource management. Basic concepts and tools for solving organizational problems. Prerequisite: junior standing.

Callahan/P 304 **10182**

MGMT 382 Organizational Behavior (5)

8-week/10:30 am-1 pm/MW

Models of organizational behavior, alternative managerial behaviors, developing skills in dealing with people in areas of leadership, motivation, communication skills, conflict, and group processes. Prerequisite: MGMT 380.

Staff/P 351 **10205**

Course Descriptions

MGMT 482 Business Policy and Organization (5)

8-week/5:35-8 pm/TTh

Case studies of policy and administration of business; original work in analysis and policy decisions. Prerequisite: all business core courses and senior standing. Business Core.

Stephenson/BELLEVUE **10198**

MKTG 350 Introduction to Marketing (5)

8-week/10:30 am-1 pm/TTh

Survey of institutions and essential functions of the marketing system; analysis of marketing mix, product, place, price strategies. Prerequisite: junior standing. Business Core.

Staff/P 351 **10218**

MKTG 351 Consumer Behavior (5)

8-week/1-3:40 pm/MW

Application of behavioral sciences to explore consumer decision making processes. Characteristics of goods, shopper behavior, opinion leadership, market segmentation, concepts, relevant personal selling. Prerequisite: MKTG 350.

Heimbach/P 351 **10220**

OP 360 Manufacturing and Service Operations (5)

8-week/10:30 am-1 pm/MW

An introduction to the operations function, including operations strategy, operations analysis, quality improvement, facility layout, work design, materials management, scheduling, aggregate planning, forecasting and international operations. Students work in teams to visit a local factory, and prepare reports relating their observations to course topics. Prerequisites: EC 260, CSC 103. Business Core.

Ansari/P 304 **10236**

OP 466 Project Management (5)

8-week/5:35-8 pm/TTh

This course addresses the managerial concepts and technical tools required for evaluating, planning, managing and controlling projects.

Topics include strategic issues, project selection, risk analysis, work breakdown structures, PERT/CPM, resource management, conflict issues, time cost trade-offs, project scheduling software, cost/schedule control systems, teambuilding, and matrix organization. Guest speakers from industry highlight implementation issues. Students apply course concepts to real and simulated projects. Prerequisite: OP 360.

Cline/P304 **10247**

Business, Graduate

Interession 8/15-9/12

BUSA 500 Management Information Systems (3)

Interession/5:35-8:45 pm/MW

Introductory survey course in information systems. Includes systems concepts, transaction processing, MIS, decision-support systems; database management, data communications and LANs, system analysis and design, acquisition and contracting, security, and ethical issues.

Prerequisite: computer proficiency.

Ansari/BELLEVUE **10358**

BUSA 520 Business Responsibilities/Ethics (3)

Interession/5:35-8:45 pm/TTh

Bases for ethical relationship among agents in a mixed-market economy. Responsibilities on both sides of such relationships are examined: employer and employee, firm and customer, competitors and stockholders, dealers and suppliers, unions, local community, and government.

Tallarico/BELLEVUE **10406**

BUSA 576 International Law (3)

Interession/5:35-8:45 pm/TTh

Course includes a study of various problems in doing business in foreign countries. Emphasis will include study of problems/issues of operating in Canada and other Pacific Rim countries, as well as problems/issues of foreign businesses operating in the U.S. Prerequisite: BUSA 502.

Arsenen/BELLEVUE **10419**

BUSA 591C Database Management (3)

Interession/5:35-8:45 pm/TTh

Review of database management techniques. Survey of database management systems, their use, architecture, design, implementation and cost/benefit/performance. Prerequisite: BUSA 500

Vanmane/ENGR 304 **13062**

MGMT 518 Advanced Organizational Behavior (3)

Interession/5:35-8:45 pm/MW

Models and theories of organizational behavior, alternative managerial behaviors, developing skills in dealing with people in areas of leadership, motivation, communication skills, conflict, group processes, and selected international topics. Emphasis on emerging theory. Prerequisite: MGMT 508.

Wells/P 453 **10581**

MGMT 590 Business Policy (3)

Interession/5:35-8:45 pm/MW

Policy problems faced by chief administrative officers. Determination of objectives, development of policies to achieve objectives. Organization of executive personnel to implement policies, coordination of the organization, and adjustments to changes in environment. Case study seminars. Prerequisite: all management core classes.

Fleenor/P 401 **10631**

MGMT 591C Management for the 21st Century (3)

Interession/5:35-8:45 pm/TTh

The course is designed to meet the challenges an entrepreneur/manager faces in the next decade. Topics covered include the business plan that gets money; entrepreneurial venturing alliances; mergers, acquisitions; management of rapid growth; management of decline; turnaround issues; getting and serving on boards of directors and advisory boards for profit and nonprofit organizations. Management trends for the year 2000. Local company owners and managers will be guest speakers. The growth of several industries (such as software and pizza) is analyzed as well as specific firms within these industries. Prerequisite: MGMT 518 or permission of instructor.

Stephenson/ENGR 400 **13086**

Business Administration (Undergraduate 8-week Session, Graduate 8-week Session)

MGMT 591C American Manufacturing Management in the 1990s (3)

Intersession/5:35-8:45 pm/MW

American companies' internal management practices must change to re-establish international competitiveness in manufacturing. Seminar participants will examine the Why and How.

Prerequisite: MGMT 518.

Culbertson/BELLEVUE **13090**

MGMT 591C Global Culture and International Business (3)

Intersession/5:35-8:45 pm/TTh

A seminar to help managers become comfortable with other cultural attitudes by introducing them to various cultures around the world. It will form a base for later regional culture studies. Prerequisite: MGMT 518.

Tallarico/EVERETT **13120**

Business, Graduate

8-week session 6/20-8/13

ACC 503 Financial Accounting (3)

8-week/5:35-8:45 pm/Th

Concepts and principles underlying accounting, with special attention to income determination and measurement of assets and equities. Analysis of business performance from accounting viewpoints.

Staff/BELLEVUE **10291**

ACC 513 Managerial Accounting (3)

8-week/5:35-8:45 pm/T

An examination of the basic issues of managerial accounting: product costing and information for planning and control decisions through problem solving, case analysis, lecture, and class discussion. Prerequisite: ACC 503.

Staff/EVERETT **10309**

ACC 513 Managerial Accounting (3)

8-week/5:35-8:45 pm/W

See description above.

Staff/P 451 **10314**

ACC 531 Financial Accounting Theory and Practice (3)

8-week/7:15-8:45 pm/TTh

Theory and development of accounting principles; evolution of theory as relates to the current state of accounting for the assets of the entity and the measurement and reporting of periodic income.

Prerequisite: ACC 503.

Hafford/P 351 **10323**

ACC 536 Federal Taxation (3)

8-week/5:35-8:45 pm/W

Introduction to the basic concepts of federal income taxation for the various forms of business organizations. Use of tax service and research in tax problems. Prerequisite: ACC 503.

Weihrich/P 401 **10337**

BUSA 500 Management Information Systems (3)

8-week/9:15 am-12:30 pm/S

Introductory survey course in information systems. Includes systems concepts, transaction processing, MIS, decision-support systems; database management, data communications and LANs, system analysis and design, acquisition and contracting, security, and ethical issues.

Prerequisite: computer proficiency.

Ansari/P 351 **10346**

BUSA 502 Legal Environment (3)

8-week/5:35-8:45 pm/M

Objectives of American legal system: its structure, procedures, and dynamics of courts and regulatory commissions. Relationship of law to social change and preservation of society's values. Emphasis on legal analysis.

Staff/P 401 **10360**

BUSA 506 Production and Operations Management (3)

8-week/4-7:15 pm/Th

Topics include quality control, capacity planning and scheduling, inventory control and materials requirements planning, forecasting, facility layout, Japanese manufacturing principles, project management, productivity, product design, service operations, and other topics. Prerequisites: EC 501, math and computer proficiencies.

Magnan/BELLEVUE **10371**

BUSA 511 Management Science (3)

8-week/5:35-8:45 pm/Th

Techniques of quantitative and statistical analysis such as linear programming, transportation and assignment simulation, queuing theory, game theory, dynamic programming, decision theory, and time-series analysis. Prerequisite: EC 501, BUSA 506.

Toh/ENGR 400 **10385**

BUSA 520 Business Responsibilities/Ethics (3)

8-week/9:15 am-12:30 pm/S

Bases for ethical relationship among agents in a mixed-market economy. Responsibilities on both sides of such relationships are examined: employer and employee, firm and customer, competitors and stockholders, dealers and suppliers, unions, local community, and government.

Tallarico/P 401 **10392**

BUSA 591C Operations Strategy (3)

8-week/5:35-8:45 pm/M

Analysis of the relationship between the operations function and business strategy, with an examination of operations strategies and their linkages with other organizational functions, including marketing, accounting, and design. Development, content, and implementation of operations strategies are discussed in the context of domestic and international cases. Students apply a theoretical framework to analyze operations strategies in local firms.

Magnan/BELLEVUE **13077**

EC 501 Introductory Business Statistics (3)

8-week/1-4:15 pm/S

Descriptive and summary statistics, probability, statistical sampling and sampling distribution, interval estimation, hypothesis testing on one population, Chi-square analysis, one-way analysis of variance, simple correlation and regression analysis. Prerequisite: math and computer proficiencies.

Toh/ENGR 400 **10441**

Course Descriptions

EC 517 Macroeconomic Analysis (3)

8-week/1-4:15 pm/S

Functioning of mixed-market economy. Determinants of aggregate level of income; employment and prices. Forecasting and policy analysis, international aspects. Prerequisite: math proficiency.

Staff/P 401 **10453**

EC 517 Macroeconomic Analysis (3)

8-week/5:35-8:45 pm/W

See description above.

Staff/BELLEVUE **10464**

EC 527 Managerial Economics (3)

8-week/4-7:15 pm/Th

Theory of the consumer, the firm, and the industry, with emphasis on applications to business decision-making. Prerequisite: EC 517.

Rivers/P 405 **10470**

EC 563 Survey Research Methods and Experimental Design

8-week/5:35-8:45 pm/Th

Hypothesis testing on two populations, non-parametric statistics, two-way analysis of variance, goodness-of-fit tests, multiple correlation and regression analysis, time series analysis and forecasting, computer applications. Prerequisite: EC 501.

Wilson/ENG 312 **10488**

EC 575 Health Care Economics and Finance (3)

8-week/5:35-8:45 pm/T

The application of economic principles to health care policy issues. Topics include analysis of health care demand, information costs and market structure and the provision of private and social health care insurance. Prerequisite: EC 527.

Staff/BELLEVUE **10497**

FIN 504 Introduction to Financial Management (3)

8-week/5:35-8:45 pm/Th

Theory and practice of business finance with emphasis on asset valuation, capital structure, cost of capital and capital budgeting. Prerequisites: Math proficiency, ACC 503.

Staff/P 451 **10503**

FIN 514 Managerial Finance (3)

8-week/4-7:15 pm/T

Topics to be covered are asset valuation, capital budgeting, lease analysis, dividend policy, long-term sources of funding, and contingent claims. Prerequisite: FIN 504.

Staff/BELLEVUE **10512**

FIN 545 Speculative Financial Markets (3)

8-week/5:35-8:45 pm/M

Modeling for risk and uncertainty, advanced portfolio theory, options and futures. Prerequisite: FIN 514.

Staff/P 451 **10529**

FIN 546 International Finance (3)

8-week/5:35-8:45 pm/W

Reviews theoretical concepts, practical techniques, institutions and issues related to the management of financial aspects of international business. Includes topics such as balance of payments, exchange rates, trade finance instruments, hedging, economic exposure, capital budgeting, foreign investment. Prerequisites: EC 517, FIN 514.

Staff/BELLEVUE **10530**

FIN 591C Personal Financial Planning (3)

8-week/5:35-8:45 pm/Th

Objective is to expose students to the various elements involved in formulating a comprehensive financial plan. Topics included will be personal investing, education planning, retirement planning, risk management and consumer finance. Prerequisite: FIN 514

Jung/P 452 **13008**

IB 519 International Business Enterprise (3)

8-week/5:35-8:45 pm/T

Managing international business. Topics such as the international financial environment and exchange rate risk, international trade theories and institutions, and government trade policies. Foreign marketing strategies and accounting, legal and labor practices. Prerequisite: MGMT 508, EC 517.

Staff/P 453 **10548**

MGMT 508 Principles of Management (3)

8-week/5:35-8:45 pm/M

Introductory survey of principles of management, organizational theory and organizational behavior. Basic concepts and tools for solving organizational problems.

Culbertson/EVERETT **10567**

MGMT 508 Principles of Management (3)

8-week/7:15-10:30 pm/T

See description above.

Culbertson/P 452 **10556**

MGMT 518 Advanced Organizational Behavior (3)

8-week/7:15-10:30 pm/T

Models and theories of organizational behavior, alternative managerial behaviors, developing skills in dealing with people in areas of leadership, motivation, communication skills, conflict, group processes, and selected international topics. Emphasis on emerging theory. Prerequisite: MGMT 508.

Wells/BELLEVUE **10575**

MGMT 585 Management of Change (3)

8-week/7:15-10:30 pm/Th

Process of change in organizations, its impact on the individuals and organizations. Problems in technology and culture, managerial philosophy, lifestyles and attitudes toward work. Prerequisite: MGMT 518.

Wells/P 453 **10594**

Business Administration (8-week Session) to Computer Science

MGMT 586 Entrepreneurship (3)

8-week/9:15 am-12:30 pm/S

Procedures and problems in starting and operating a successful small business enterprise. Prerequisite: all business core.

Stephenson/ENGR 400 **10608**

MGMT 588 Negotiations (3)

8-week/5:35-8:45 pm/T

Traditional and modern approaches to bargaining and conflict resolution. Emphasis on developing negotiation skills for use in a professional context or any interpersonal activity. Prerequisite: BUSA 502.

Low/BELLEVUE **10613**

MGMT 590 Business Policy (3)

8-week/5:35-8:45 pm/M

Policy problems faced by chief administrative officers. Determination of objectives, development of policies to achieve objectives. Organization of executive personnel to implement policies, coordination of the organization, and adjustments to changes in environment. Case study seminars. Prerequisite: all management core classes.

Fleenor/BELLEVUE **10624**

MGMT 591C International Management (3)

8-week/5:35-8:45 pm/T

The study of how firms become and remain international in scope. Emphasis on the internationalization process and multinational management. Lecture, discussion, and case analysis.

Fleenor/P 456 **13105**

MGMT 591C Business Communications (3)

8-week/5:35-8:45 pm/Th

Elements of the communications process, formal and informal networks, verbal and nonverbal messages; listening, conflict styles, effective meetings, small group communication, oral presentations, written communications and intercultural considerations. Prerequisite MGMT 518

Staff/BELLEVUE **13118**

MKTG 505 Marketing Principles (3)

8-week/4-7:15 pm/T

Introduction to marketing and its functions. Examination of contemporary problems and issues in marketing of goods and services.

Galbraith/ENGR 400 **10690**

MKTG 515 Marketing Management (3)

8-week/9:15 am-12:30 pm/S

Basic marketing management activities of planning, implementing, and controlling product, price, distribution, and promotion decisions. Application of the marketing mix and evaluation of the firm's marketing efforts. Prerequisite: MKTG 505.

Staff/P 453 **10707**

MKTG 515 Marketing Management (3)

8-week/5:35-8:45 pm/Th

Basic marketing management activities of planning, implementing, and controlling product, price, distribution, and promotion decisions. Application of the marketing mix and evaluation of the firm's marketing efforts. Prerequisite: MKTG 505.

Lee/BELLEVUE **10715**

MKTG 551 Consumer Behavior (3)

8-week/5:35-8:45 pm/M

Study and research in consumer behavior. Theoretical concepts from psychology, sociology and economics are applied to understanding human behavior in the market place and relating it to firm strategy. Prerequisite: MKTG 515.

Heimbach/ENGR 400 **10721**

Chemistry

CH 102 Introduction to Organic and Biochemistry (5)

8-week/9:10-10:10 am/MTThF
(Lab: T, Th, 1:10-4:30 pm)

Organic chemistry and introduction to biochemistry with applications to health sciences. Phippen/BA 501 **10052**

CH 123 General Chemistry 3 (4)

First 4-week/10:30 am-12:30 pm/MTWThF

Third quarter introductory chemistry for science and engineering majors. Phippen/BA 501 **10069**

CH 133 General Chemistry Lab 3 (1)

First 4-week/1-5 pm/WTh (Lab to accompany CH 123)

Phippen/BA 501 **10074**

CH 260 Laboratory Safety (2)

Second 4-week/10 am-noon/TTh

Lab safety with applications for the academic environment, regulations, waste management and minimization. Pietrzyk/BA 502 **10083**

Computer Science

CSC 103 Introduction to Computers (5)

8-week/1:10-2:10 pm/MTWThF

Introduction to the use of microcomputers in typical applications, such as word processing and spreadsheets. No prior experience is assumed. Includes an overview of computer concepts and extensive hands-on experience. Vanmane/P 403 (MWF), ENG 304 (TTh) **10832**

CSC 103 Introduction to Computer Science (5)

8-week/5:30-8 pm/TTh

See description above. Vanmane/P 403 **10849**

Course Descriptions

Criminal Justice

CJ 110 Introduction to Criminal Justice

8-week/1:30-4 pm/MW

A survey of criminal justice processes from arrest through release, the relationships of police, prosecutor, defense, the courts and prison, as each integrates into a system. CJ 110 or equivalent is required for all majors.

Helfgott/ADM 207 **13807**

CJ 391E Social and Criminal Justice: Crime and Personality (5)

8-week/10 am-12:30 pm/MW

To explore the history, theory, and empirical study of the relationship between crime and personality. Particular emphasis will be directed toward merging criminological and psychological perspectives in light of conflicting objectives of the criminal justice and mental health systems that have historically influenced the understanding of the relationship between crime and personality. Central issues of study will include: The conceptual development of the conditions of sociopathy, psychopathy, and anti-social personality disorder; differential cross-cultural and across gender manifestations of personality disorders most associated with criminality.

Helfgott/ADM 207 **13031**

Culture and Language Bridge Program

EN 101 Basic Writing (CLB) (5)

Special 9-week, July 5 to August 31/11-11:50 am/ MTWThF

For non-native English students: writing with emphasis on generating, organizing and developing ideas in paragraphs and short essays. Emphasis, also, on control of sentence structure and punctuation. Counts toward graduation.

Staff/ENGR 305 **10804**

ESL 087 Academic Reading and Writing (3)

Special 9-week, July 5 to Aug. 31/9-9:50 am/ MTWThF

For non-native English students: An introduction to the written modes of the academic classroom, including essay-test writing, summarizing, and paraphrasing.

Harman/ENGR 305 **11930**

ESL 088 Classroom Communication (3)

Special 9-week, July 5 to Aug. 31/10-10:50 am/ MTWThF

For non-native English students: An introduction to oral classroom communication, including note-taking from lectures, guest professors, group discussions, in-class participation, presentations, and asserting opinions.

Harman/ENGR 305 **11948**

ESL 089 Language Lab (1)

Special 9-week, July 5 to Aug. 31/Arranged

For non-native English students: A supervised experiential lab, with options including student discussion groups, volunteering in local service agencies, and other activities.

Harman/Arranged **11956**

Diagnostic Ultrasound

US 396 Independent Study (1-5)

8-week/Arranged

Staff/NOC 001 **11349**

US 473 Clinical Orientation to Ultrasound (10)

8-week/Arranged

Clinical ultrasound internship. Corequisite: US 483.

Mentors/NOC 001 **11361**

US 474 Clinical Experience in Ultrasound (8)

8-week/Arranged

Clinical ultrasound internship. Corequisite: US 483.

Mentors/NOC 001 **11376**

US 483 Ultrasound Seminar-Section 1 (2)

8-week/Arranged

Clinical ultrasound internship. Corequisite: US 473 or 474.

Staff/NOC 001 **11387**

US 483 Ultrasound Seminar-Section 2 (2)

8-week/Arranged

Clinical ultrasound internship. Corequisite: US 473 or 474. Permission of instructor required.

Staff/NOC 001 **11393**

US 484 Basic Science of Ultrasound (2)

8-week/Arranged

Clinical ultrasound internship. Corequisite: US 473 or 474.

Staff/NOC 001 **11409**

Economics

EC 260 Business Statistics (5)

8-week/4:30-7 pm/MW

Descriptive statistics, summary statistics, statistical sampling, probability distributions, interval estimation, hypothesis testing, Chi-square analysis, analysis of variance, correlation, and simple regression analysis. Prerequisite: MT 130 and sophomore standing. Business Core.

Staff/P 304 **10254**

EC 271 Principles of Economics - Macro (5)

8-week/5:35-8 pm/TTh

Organization, operation, and control of the U.S. economy in its historical and socio-political setting. Problems of inflation, unemployment, taxation, the public debt, money and banking, growth.

Prerequisite: sophomore standing. Core Option/ Business Core

Staff/P 305 **10263**

Criminal Justice to Education (First 4-week Term)

EC 330 International Economic Events and Business Decisions (5)

8-week/5:35-8 pm/MW

This course will develop the economic theory necessary to understand how the international macro economy works and influences the behavior and success of business. Emphasis will be placed upon the impact of international macroeconomic events and how those events affect a firm's ability to compete. Prerequisites: EC 271. No credit granted for students who have taken EC 372.

Staff/P 305 **10289**

Education

Short Sessions

ED 491C The Shape of Jesus in Your Religion Class (3)

8 am-3 pm/Daily, June 20 to 24

Designed to make faith living, conscious and active for their students. The basic components of religion lesson planning and the importance of story-telling, media and music, etc., as methods for the teaching doctrine and Scripture will be stressed. Aimed at new teachers and/or experienced teachers.

Perri/Tierman/P 305 **13172**

ED 491C Curriculum Design: Gifted (3)

1:10-4:10 pm/Daily, Aug. 1 to 12

How to develop and teach lessons incorporating a variety of curriculum and learning models appropriate for gifted students. Included will be classroom observations.

Simms/P 452 **13189**

ED 492C Ethical Leadership in Catholic School (3)

8 am-3 pm/Daily, Aug. 1 to 5

This five day symposium will feature nationally known speakers who will focus on current thinking and research in formal leadership in the ethical community of the Catholic school.

Ford/Purpel/Sergiovanni/LL 115 **13326**

ED 493C Ethics and the School Administrator (3)

8 am-3 pm/Daily, Aug. 1 to 5

This five day symposium will feature nationally known speakers who will focus on current explorations of ethics and moral issues in changing school communities.

Purpel/Sergiovanni/ENGR 400 **13191**

EDCI 591C Learning Through Movement (3)

1:10-4:30 pm/Daily, June 20 to July 1

This course explores the elements of creative dance, connecting dance with other art forms. Focus will be on learning to use movement in the classroom, adding new dimensions to teaching.

Green-Gilbert/P 456 **13429**

EDDR 600 Workshop in Educational Leadership (9)

9 am-4:30 pm/Daily, July 11 to Aug. 5

Integrated four-week workshop in educational leadership. Includes theoretical and practical study of leadership in educational institutions. Required first course in the EdD program. Majors only. Full doctoral tuition.

Fillenberg/Forbes/Gardiner/Zarter/P 353 . **12719**

First 4-week Term 6/20-7/16

ED 422 Working with Parents and Professionals (3)

First 4-week/9:10-10:40 am/MTWThF

This course will focus on skills necessary for teachers to work with parents and professionals. Included are techniques for involving parents in the educational process, counseling approaches and conferencing practices. Emphasis is placed on working with the parents of exceptional students.

Hilton/P 551 **12320**

ED 424 Introduction to Mild Handicaps (3)

First 4-week/7:30-9 am/MTWThF

History and current practices in diagnosis and remediation of students who are learning-disabled and mildly handicapped.

Denoon/P 453 **12336**

ED 500 Introduction to Research and Graduate Study (3)

First 4-week/5:45-8:45 pm /TTh and F, July 1 and July 15

Introduction to research skills and literature in students' fields. Includes an orientation to graduate studies. Ordinarily taken as first graduate course.

Willing/P 354 **12363**

ED 501 Philosophy of Education (3)

First 4-week/7:30-9 am/MTWThF

Philosophical foundations of education and related fields.

Gilroy/P 551 **12389**

ED 521 Adult Psychology/Learning (3)

First 4-week/12:10-3:45 pm/TTh and F, July 1 and July 15

Investigation of various theories of adult development and learning.

Staff/P 452 **12407**

ED 522 Child Psychology/Learning (3)

First 4-week/9:10-10:40 am/MTWThF

Investigation of various theories of child development and learning.

Guest/P 453 **12415**

EDAD 561 Women as Transformational Leaders (3)

First 4-week/5:45-8:45 pm/MW and F, June 24 and July 8

Exploration of a model of leadership based on feminist values, leadership and organizational theory, systems thinking, contexts for leadership and women's wisdom.

Forbes/P 454 **12439**

Course Descriptions

EDAD 584B Washington School Law (2)

**First 4-week/7:30-10:20 am/MW and F,
June 24 and July 8**

School laws of Washington based on its constitution, statutes, administrative code and court precedents. Emphasis on application to K-12 schools. Prerequisite: EDAD 578.

Hannah/P 451 **12442**

EDAD 584C Washington School Law (3)

**First 4-week/7:30-10:20 am/MW and F,
June 24 and July 8**

School laws of Washington based on its constitution, statutes, administrative code and court precedents. Emphasis on application to K-12 schools. Prerequisite: EDAD 578.

Hannah/P 451 **12468**

EDAD 586 Professional Personnel (3)

**First 4-week/10:30 am-noon/MW and F,
June 24 and July 8**

Selection, assignment, evaluation, competency maintenance; positive personnel climate, rights, responsibilities, grievances, and bargaining procedures.

Staff/P 302 **12473**

EDAE 510 Planning Programs for Adult Learners (3)

**First 4-week/5:45-8:45 pm/TTh and F,
July 1 and July 15**

This course presents models and processes for curriculum development, planning of scope and sequence of course offerings, thematic development, competency-based models of instruction, syllabus development and assignment of class requirements all appropriate to the adult setting.

Weaver/P 454 **12484**

EDAE 568 Administration of Adult Programs (3)

**First 4-week/9:15 am-4:30 pm/S,
June 18, July 9 and 16**

Focuses on application of administrative skills in the adult education setting. Key administrative processes are investigated, including program planning, marketing, budgeting and staffing as they apply to the adult setting.

Weaver/Willing/P 454 **12496**

EDCI 513 Supervision of Instruction (3)

**First 4 week/11 am-2 pm/MW and F,
June 24 and July 8**

Improvement of instruction through supervisory leadership.

Anderson/P 452 **12500**

EDCI 525 Seminar: Teaching of Reading (3)

**First 4-week/9:15 am-12:20 pm/TTh and F,
July 1 and 15**

Development of reading skills at all levels; examination and evaluation of current reading practices, research, and materials. Prerequisite: ED 336 or 337 or equivalent, or permission of instructor.

Schlick Noe/P 451 **12511**

EDCI 527 Corrective Techniques in Teaching Reading (3)

First 4-week/10:50 am-12:20 pm/MTWThF

Identification of components of effective corrective reading programs; description and application of specific methods and materials; evaluation and design of corrective reading approaches.

Prerequisite: EDCI 524 or 554 or permission of instructor.

Davis/P 551 **12525**

EDCI 528 Reading Practicum Workshop (3)

First 4-week/9:15 am-3:30 pm/MTWThF

Emphasis on lesson design for word recognition and comprehension skills; recording and reporting student learning increments, and study of role and application of materials. Prerequisite: EDCI 524, 525 or permission of instructor.

Schlick Noe/P 454 **12533**

EDCI 529 Field Practicum in Reading (6)

First 4-week/8:30 am-3:30 pm/MTWThF

Supervised field experience in diagnosis and teaching of reading. Prerequisite: EDCI 524, 525 or permission of instructor.

Schlick Noe/P 454 **12544**

EDCI 531 Curriculum for the Gifted: Development and Modification (3)

First 4-week/12:30-2 pm/MTWThF

Strategies for constructing and modifying curriculum for gifted students based on a variety of curriculum and learning models.

Bravmann/P 352 **12557**

EDCI 591C Assessment and the IEP (3)

First 4-week/7:30-9 pm/Daily

This course trains special education personnel to use norm-referenced and curriculum-based assessment to develop appropriate individual education plans for students with disabilities.

Hilton/P 405 **12566**

EDCI 591C Teaching Reading with Children's Literature (3)

**First 4-week/2:10-5:10 pm/MW and F,
June 24 and July 8**

Using children's literature as the basis for reading comprehension and vocabulary instruction. Developing instruction in the content areas with relevant trade books.

Schaefer/P 352 **12770**

EDCN 509 Developmental School Counseling (3)

**First 4-week/12:10-3:45 pm/TTh and F,
July 1 and 15**

Emphasizes expanded role of the school counselor as psychological educator, consultant, and systems change agent. Studies models of these functions and promotes application to student's school setting.

Ingram/P 405 **12579**

EDCN 515 Loss and Grief (3)

**First 4-week/12:10-3:45 pm/MW and F,
June 24 and July 8**

Loss and the grieving process as they relate to illness, disability, and dying.

Haney/P 405 **12582**

Education (First and Second 4-week Terms)

EDDR 604 Workshop in Organizational Development and Change (3)

First 4-week/1:30-4:30 pm/MW and F, June 24 and July 8

Integrated workshop relating to organizational development, conflict management. Required during the second summer in the EdD program.
Fillenberg/Forbes/P 453 **12598**

EDMT 520 Community Internship (2)

First 4-week/Arranged

Observation, analysis and sharing of experiences based on an internship in a service learning program, a non-school community agency, business or industrial setting. Permission of instructor.
Anderson/Arranged **12604**

EDMT 535 Child Abuse and Related Issues (1)

First 4-week/Arranged

Examines child abuse related to the role of the schools. Includes identification, reporting, and legal responsibilities.
Staff/Arranged **12938**

EDMT 535 Child Abuse and Related Issues (1)

First 4-week/Arranged

See description above.
Staff/Arranged **12940**

EDMT 540 Reflective Teaching Seminar (3)

First 4-week/9:15 am-12:10 pm/MWF

Self-assessment and the development of a professional improvement plan, including an initial articulation of a personal philosophy of teaching, based on a reflective analysis of historical and contemporary philosophies of education. Permission of instructor.
Marshak/P 405 **12610**

EDMT 540 Reflective Teaching Seminar (3)

First 4-week/9:15 am-12:10 pm/TThF

See description above.
Marshak/P 405 **12628**

EDMT 542 MIT Research Project (1)

First 4-week/Arranged

See course description for EDMT 544. Permission of MIT coordinator required.
Roddy/Arranged **12952**

EDMT 543 MIT Research Project (1)

First 4-week/Arranged

See course description for EDMT 544. Permission of MIT coordinator required.
Roddy/Arranged **12969**

EDMT 544 MIT Research Project (1)

First 4-week/9:15 am-12:10 pm/TTh

Students will develop skills in critically evaluating research in education and work in cooperative groups to conduct an action research project. Permission of instructor.
Roddy/P 401 **12632**

EDMT 544 MIT Research Project (1)

First 4-week/9:15 am-12:10 pm/MW

See description above.
Roddy/P 401 **12649**

EDSD 576 Organization and Governance of Post-Secondary Education (3)

First 4-week/4-7 pm/TTh and F, July 1 and 15

Examines the various governance structures within higher education including public, independent, religious, community college, and multiversity. Includes history and philosophy of college student affairs work. Explores how context of each structure affects student development programs.
Stringer/P 401 **12655**

Second 4-week Term 7/18-8/13

ED 412 Early Childhood Practicum (3)

Second 4-week/Arranged

Supervised field experience in an early education setting.
Chattin-McNichols/Arranged **12797**

ED 425 Introduction to Special Education (3)

Second 4-week/9:10-10:40 am/MTWThF

Survey of characteristics of exceptional students served by special educators. A review of practices and federal and state laws guiding special education. Writing individual education programs that lead to effective instruction is also included.
Staff/P 551 **12808**

ED 428 Language Development (3)

Second 4-week/9:10-10:40 am/MTWThF

An introduction to critical features of the development processes of receptive and expressive language with consideration of diagnosis, curriculum and method.
Staff/P 405 **12813**

ED 500 Introduction to Research and Graduate Study (3)

Second 4-week/7:30-9:30 am/MTWThF

Introduction to research skills and literature in students' fields. Includes an orientation to graduate studies. Ordinarily taken as first graduate course.
Chattin-McNichols/P 453 **12824**

ED 515 Multicultures (3)

Second 4-week/5:45-8:45 pm/TTh and F, 7/29 and 8/12

Examination of a wide variety of cultures with implications for helping professionals.
Murphy/P 302 **12831**

ED 523 Adolescent Psychology/Learning (3)

Second 4-week/1:10-4:10 pm/TTh and F, July 29 and Aug. 12

Investigation studies in adolescent psychology and learning.
Murphy/P 551 **12845**

EDAD 559 The American Community College (3)

Second 4-week/5:45-8:45 pm/TTh and F, July 29 and Aug. 12

History, role, present status and future directions of the American Community College.
Hungar/P 454 **12859**

Course Descriptions

EDAD 587 Community Relations (3)

**Second 4-week/9:10 am-noon/MW and F,
July 22 and Aug. 5**

Purposes and media for informing the general public and patrons about programs and needs; roles of professional personnel and administrators.

Staff/P 352 **12862**

EDCI 510 Basics of Curriculum and Instruction (3)

**Second 4-week/11 am-2 pm/TTh and F,
July 29 and Aug. 12**

Study of the foundations of curriculum and instructional development. Investigation and analysis of selected current issues, innovations and trends with an emphasis on their bases.

Bravmann/P 401 **12877**

EDCI 512 Seminar: Instructional Effectiveness (3)

**Second 4-week/11 am-2 pm/MW and F,
July 22 and Aug. 5**

Survey of current research on teacher behaviors, instructional patterns, classroom conditions, and school characteristics associated with student learning. Review of teaching and learning styles with an emphasis on value-based instruction.

Staff/P 405 **12886**

EDCI 526 Reading in Content Fields (3)

**Second 4-week/4-7 pm/M,W, and F,
July 22 and Aug. 5**

Decoding and vocabulary analysis, comprehension, reading rate, study skills, and reading interests as related to specific content fields. Prerequisite: ED 336 or 337 or equivalent or permission of instructor.

Sledge/P 455 **12890**

EDCI 532 Psychosocial Development of Gifted Students (3)

Second 4-week/12:30-2 pm/MTWThF

Focus will be on the specific psychological and emotional needs of gifted students. Theoretical foundations will be addressed as will the role of the teacher in working with both gifted students and, when appropriate, their parents. Topics covered will include special populations and their needs, the family's role, peer relationships, underachievement, psychopathology, etc.

Staff/P 305 **13013**

EDCI 543 Seminar in Behavior Disorders (3)

Second 4-week/10:50 am-12:20 pm/MTWThF

Overview of practices and rationales in the education of the behavior disordered and/or emotionally disturbed child. Structuring of individualized remedial programs and techniques which use existing agencies and personnel.

Staff/P 551 **12901**

EDCI 546 Classroom Management (3)

Second 4-week/9:10-10:40 am/MTWThF

Critical analysis of management systems, such as operant discrimination learning and environmental control.

Staff/P 401 **12916**

EDCI 591C Instructional Media (3)

**Second 4-week/5:45-8:45 pm/TTh and F,
July 29 and Aug. 12**

Basic issues and trends in instructional media, especially in computer software for both K-12 and adult educators. Review of the research based on the effectiveness of various media. Social impacts of technology, gender, and equity issues.

Prerequisite: ED 460 or equivalent or basic familiarity with Macintosh computer, ability to load and use software.

Chattin-McNichols/P 401 **12927**

8-week Session 6/20-8/13

ED 491C Math for Elementary Teachers (5)

8-week/5:45-8:45 pm/TTh

A participation-oriented, hands-on review of the mathematical content needed to teach elementary school mathematics in a manner consistent with national reform standards in mathematics education. The focus is on the acquisition of conceptual understanding in preparation for teaching.

Roddy/P 352 **11414**

ED 521 Adult Psychology/Learning (3)

8-week/5:45-8:45 pm/M and F, July 1 and 22

Investigation of various theories of adult development and learning.

Crow/P 551 **11967**

EDAD 564 Administrative Internship I (2)

8-week/Arranged

Supervised experiences in building, program, and school business administration, as well as managing institutional development and training services. On-site conferences and group seminars. Prerequisites: course work in administration and permission of program coordinator at least one full quarter prior to beginning internship. Required for principal and program administrator credentials. Graded S/NC.

Barker/Arranged **11423**

EDAD 565 Administrative Internship II (2)

8-week/Arranged

See description above.

Barker/Arranged **11437**

EDAD 566 Administrative Internship III (2)

8-week/Arranged

See description above.

Barker/Arranged **11446**

Education (Second 4 week term and 8-week Session)

EDAD 570 Leadership in Education I (3)

8-week/5:45-8:45 pm/W and F, July 8 and 29

Introduction to program through personal values assessment and examination of values of leaders, the process of valuing, leadership and value theories, and development of a personal growth plan.

Barker/P 453 **11458**

EDAD 572 The Principalship (3)

8-week/2:10-5:10 pm/TTh

Leadership of faculty, student, and community groups to meet school goals; development of school culture and management of building functions and resources. Prerequisites: School of Education and administration core course work. Class meets through August 4.

Staff/P 352 **11460**

EDAD 580 Higher Education Law (3)

8-week/5:45-8:45 pm/M and F, July 1 and 22

Overview of legal issues related to post-secondary institutions, based on federal and state case law, statutes, WACs and RCWs.

Jennerich/Walerius/P 352 **11471**

EDAD 595 Administrative Graduate Project (3)

8-week/Arranged

Intensive library research. Approximately 30 hours of reading and allied assignments for each credit. Completion reports will include analysis and critical appraisal of materials read. Prerequisite: permission of adviser.

Staff/Arranged **11485**

EDAD 596 Administrative Independent Study (1-3)

8-week/Arranged

Staff/Arranged

EDAE 566 Internship in the Adult Setting (1-3)

8-week/Arranged

Supervised field experience of 120 to 150 hours in a setting appropriate for the student's program and career goals. On-campus seminars included. Permission of program coordinator required prior to beginning.

Weaver/Arranged

1 credit 13365

2 credit 13378

3 credit 13380

EDAE 567 Internship in the Adult Setting (1-3)

8-week/Arranged

Additional field experience of 40 to 50 hours per credit (elective). Arranged with adviser for settings suited to the student's career interests. On-campus seminars included.

Weaver/Arranged

1 credit 13399

2 credit 13403

3 credit 13412

EDAE 595 Adult Education Graduate Project (3)

8-week/Arranged

Intensive library research. Approximately 30 hours of reading and allied assignments for each credit. Completion reports will include analysis and critical appraisal of materials read. Prerequisite: Permission of adviser.

Staff/Arranged **11524**

EDAE 596 Adult Education Independent Study (1-3)

8-week/Arranged

Individualized reading and reporting on a specific topic approved by the instructor. Approximately 30 hours of reading and allied assignments for each credit. Completion reports will include analysis and critical appraisal of materials read. Prerequisite: permission of adviser.

Weaver/Arranged

EDCI 554 Diagnosis and Prescription (3)

8-week/1:10-4 pm/MW

Comparison of various methods used in the diagnosis of learning problems. Selection, administration, and analysis of tests plus writing educational prescription. Prerequisite: ED 424. Class meets through July 27.

Denoon/P 401 **11545**

EDCI 595 Curriculum Graduate Project (3)

8-week/Arranged

Scholarly graduate project designed to improve some aspect of education. Prerequisites: graduate core requirements and approval of adviser.

Staff/Arranged **11559**

EDCI 596 Curriculum Independent Study (1-4)

8-week/Arranged

Library research in curriculum. Approximately 30 hours of reading and allied assignments per credit. Reports will include analysis and critical appraisal of materials read. Prerequisite: permission of adviser

Staff/Arranged

EDCN 508 Washington Law for School Counselors and Psychologists (3)

8-week/7:10-9:10 am/TTh

School laws of Washington based on its constitution, statutes, administrative code and court precedents. Emphasis on application to K-12 schools.

Howard/P 452 **13136**

EDCN 512 Career Counseling and Information Sources (3)

8-week/5:45-9:30 pm/T

Study of vocational development. Exploration of educational, social, vocational, and referral sources. Prerequisite: EDCN 511.

Crow/P 551 **11577**

Course Descriptions

EDCN 517 Group Counseling Theories and Practice (3)

8-week/4-6:45 pm, Lab, 7-9 pm/W

Emphasizes group counseling theory. Provides group experiences to integrate theory and practice. Discusses possible applications in various school, college, and agency settings along with relevant ethical considerations. Prerequisites: EDCN 510, 511.

O'Connor/P 551 **11586**

EDCN 552 Individual Counseling Practicum I (3)

8-week/4:15-8 pm/W

Supervised counseling experience with off-campus clients. Prerequisite: EDCN 551

Leibsohn/P 405 **11590**

EDCN 558 Community Mental Health Practice (3)

8-week/4:15-8 pm/T

An examination of organization, clientele, and functions of community mental health agencies. Focus on clinical assessment, case conceptualization, and management.

Johnson/P 405 **11605**

EDCN 564 Counseling Internship I (4)

8-week/4:15-8 pm/M

Supervised field experiences in a school, college, or agency. Taken in final three quarters of graduate program with permission and application made two quarters earlier. On-campus seminar required first and second quarters.

Hines/P 405 **11618**

EDCN 565 Counseling Internship II (4)

8-week/4:15-8 pm/M

See above description.

Afanador/P 504 **11857**

EDCN 565 Counseling Internship II (4)

8-week/4:15-8 pm/M

See above description.

O'Connor/P 455 **11981**

EDCN 566C Counseling Internship III (3)

8-week/4:15-8 pm/M

See above description.

Leibsohn/Haney/P 456 **13147**

EDCN 591C Ethics in Counseling (3)

8-week/12:10-3:45 pm/T

A survey of the ethical, legal, and professional issues facing agency and school counselors.

Some topics included are the ethical decision making process, codes of ethics, clients vs. public rights, client, and professional relationships.

Afanador/P 304 **13163**

EDCN 595 Counseling Graduate Project (3-6)

8-week/Arranged

Investigation of some practical aspect of the counseling field. Mandatory for master of arts in education degree. Prerequisite: permission of adviser. Graduate students only.

Staff/Arranged

3 credit **13430**

4 credit **13448**

5 credit **13456**

6 credit **13467**

EDCN 596 Counseling Independent Study (1-3)

8-week/Arranged

Intensive reading and field research in a topic agreed on by adviser and student. Approximately 30 hours of work per credit. Prerequisite: permission of adviser.

Staff/Arranged

EDDR 605 Independent Study in Educational Leadership (1-5)

8-week/Arranged

Staff/Arranged

EDDR 606 Independent Study: Educational Leadership (1-5)

8-week/Arranged

Staff/Arranged

EDDR 607 Independent Study: Educational Leadership (1-5)

8-week/Arranged

Staff/Arranged

EDDR 608 Internship in Educational Leadership (1-9)

8-week/Arranged

Gardiner/Zarter/Arranged

1 credit **13475**

2 credit **13481**

3 credit **13494**

4 credit **13506**

5 credit **13519**

6 credit **13522**

7 credit **13535**

8 credit **13541**

9 credit **13553**

EDDR 609 Superintendent Internship (1-9)

8-week/Arranged

Planned internship in school superintendency under the supervision of an experienced superintendent and a Seattle University supervisor. Graded S/NC.

Fillenberg/Arranged

1 credit **13564**

2 credit **13570**

3 credit **13588**

4 credit **13597**

5 credit **13601**

6 credit **13616**

7 credit **13627**

8 credit **13638**

9 credit **13873**

Education (Second 4-week Term and 8-week Session) to English

EDDR 610 Doctoral Project (1-14)

8-week/Arranged

A doctoral level project completed under the supervision of a project committee and a major professor. Eleven to 19 credits are required for the EdD degree. Quarterly registration will range from one to 14 credits as approved by the adviser.

Gardiner/Arranged

1 credit	13652
2 credit	13669
3 credit	13674
4 credit	13683
5 credit	13695
6 credit	13704
7 credit	13710
8 credit	13728
9 credit	13732
10 credit	13749
11 credit	13755
12 credit	13761
13 credit	13776
14 credit	13787

EDDR 613 Project Continuation (0)

8-week/Arranged

Doctoral students who do not complete the dissertation in four years must register for this course in each quarter of the fifth and following years until completion.

Gardiner/Arranged 12099

EDDR 649 Doctoral Enrollment (0)

8-week/Arranged

Doctoral students who must maintain continuous enrollment register for EDDR 649 during any quarter in which they are not otherwise registered. Permits validation of student ID.

Gardiner/Arranged 12103

EDSD 564 Internship in Student Development

Administration I (1)

8-week/Arranged

Exposure to practice of student development through an on-site internship in a student development office (three one-credit internships are required in the sequence).

Stringer/Arranged 12237

EDSD 565 Internship in Student Development

Administration II (1)

8-week/Arranged

See description above.

Stringer/Arranged 12260

EDSD 566 Internship in Student Development

Administration III (1)

8-week/Arranged

See description above.

Stringer/Arranged 12285

English

EN 101 Basic Writing (ESP) (5)

7-week/Arranged

Instruction and practice in basic writing skills with emphasis on generating, organizing, and developing ideas in paragraphs and short essays. Emphasis, also, on control of sentence structure, punctuation and standard usage. Through focus on the writing process, the course aims to increase students' self-confidence as writers. Counts toward graduation, but does not satisfy core writing requirements. Registration restricted to early success program students. Permission required.

Staff/Arranged 10810

EN 110 Freshman English (5)

7-week/9:10-10:20 am/MTWThF

Focuses on reading and writing as creative, interpretive and argumentative acts. Seeks to develop the rhetorical skills of invention, arrangement, style, and correctness. Core requirement.

Nichols/ADM 223 10934

EN 120 Masterpieces of Literature (5)

7-week/7:50-9 am/MTWThF

A study of narrative, drama and poetry, primarily of American and English authors. The student will learn to appreciate how these literary forms embody metaphoric, poetic, and mythic ways of knowing; through writing assignments, the student will also learn how to respond to literature. Core requirement.

Tadie/ADM 203 10965

EN 120 Masterpieces of Literature (5)

7-week/9:10-10:20 am/MTWThF

See description above.

Tadie/ADM 203 10978

EN 120 Masterpieces of Literature (5)

7-week/5:30-8 pm/MW

See description above.

Taylor/ADM 224 10999

EN 201 Advanced Grammar and Vocabulary (5)

7-week/10:30-11:40 am/MTWThF

A study of traditional English grammar as it relates to issues of usage, punctuation, structural correctness and rhetorical effect in standard written English. A study of the formation, meaning and nuances of words, with attention to questions of usage and accuracy.

Rowan/ADM 203 11006

EN 388 Film and Literature (5)

7-week/9:10-10:20 am/MTWThF

An introductory study of the basic principles and techniques of film art, with emphasis on the complementary contributions of the screenwriter, the director, the cinematographer and the editor.

Taylor/ADM 202 11019

Course Descriptions

EN 391E Religious Experience in Autobiography and Story (5)

7-week/7:50-9 am/MTWThF

A study of religious experience as expressed in stories and autobiographies of major writers, such as Augustine of Hippo, Thomas Merton, C.S. Lewis, Flannery O'Connor, Dorothy Day, Malcolm X and others. Also offered under RS 293E.

Leigh/ADM 220 11035

EN 391E Creative Writing (5)

Second 4-week Session, July 18-August 12/5:30-8 pm/MTWTh

Fiction and poetry writing, developed in a workshop circle of fellow writers and in tutorials, with an emphasis on tireless revising and preparing manuscripts for publication. For details, contact the instructor: 296-5426, Casey 513.

Weihe/ADM 203 11041

EN 391E Journaling in Ireland (5)

2-week, June 29-July 13

A study-abroad course in creative nonfiction writing, developed and practiced in a writers' colony of students, two writing instructors, and guest Irish authors and performers, in a village on the spectacular southwest coast of Ireland. The course concludes with a study-tour of literary Dublin. Contact instructor for permission and details: 296-5426, Casey 513.

Weihe/NOC 001 11053

Fine Arts

ART 391E The Art of Greece: Ancient and Byzantine (5)

June 16-July 4/Arranged

Learning how to look at art and how to discuss the major artistic contributions of the ancient (10th to 1st centuries B.C.) and Byzantine (11th to 16th centuries A.D.) periods of Greek civilization will be the focal points of this course. Sculptural and architectural antiquities will be studied in Athens, Delphi, Olympia, Epidauros, Tiryns, Mycenae, Corinth and on the island of Santorini. Byzantine churches and their extraordinary golden mosaics

will be examined in Athens, Ossios Loukas, Mystra and Daphne. For comparison, examples of the art from the earlier Minoan civilization (2800 to 1100 B.C.) will be seen on Crete and in Athens. Specific works will be selected for study, notes taken on site and a formal paper submitted within a month of the student's return to Seattle. For further information, contact Rebecca Bruckner at 296-5364. A deposit will be due March 1, 1994. Additional class meetings may be scheduled on the Seattle University campus.

Bruckner/NOC 001 13868

FA 120 Experiencing the Arts (5)

7-week/7:45-9:50 am/TTh

Aesthetics-based exploration of the arts, focused on enhancing ability to experience and make decisions about aesthetic qualities in man-made and natural objects and events in the environment. Interdisciplinary in art, music, and drama. Lectures and practical experience. Core requirement for freshmen.

Dore/FA 116 10742

MU 110A Piano Lessons (1)

8-week/Arranged

Contact instructor or Fine Arts Department office before beginning of term to schedule piano lessons. No auditors.

Barnes/FA 112 10768

MU 110B Piano Lessons (2)

8-week/Arranged

See description above.

Barnes/FA 112 10773

MU 111A Vocal Lessons (1)

8-week/Arranged

Contact instructor or Fine Arts Department office before beginning of term to schedule vocal lessons. No auditors.

Wopat/FA 112 10784

MU 111B Vocal Lessons (2)

8-week/Arranged

See description above.

Wopat/FA 112 10796

MU 140 Beginning Voice Lessons (1)

8-week/10-10:50 am/T

Wopat/FA 114 10750

Foreign Language

The following intensive courses employ an intuitive approach to understanding, speaking, reading, and writing in French and Spanish. They constitute a systematic, programmed study of each language. All courses are taught in the subject language. Each three-course sequence condenses three quarters of language instruction into one 8-week term. Students may enroll in an entire sequence or in individual courses.

SP 115 Spanish I (5)

June 20 to July 7/8-11:30 am/MTWThF

See description above.

Silva and Perozo/ADM 206 11116

SP 125 Spanish II (5)

July 8 to July 26/8-11:30 am/MTWThF

See description above.

ADM 206 11127

SP 135 Spanish III (5)

July 27 to August 12/8-11:30 am/MTWThF

See description above.

ADM 206 11138

FR 115 French I (5)

June 20 to July 7/8-11:30 am/MTWThF

See description above.

Reinking and Milan/ADM 205 11070

FR 125 French II (5)

July 8 to July 26/8-11:30 am/MTWThF

See description above.

ADM 205 11088

FR 135 French III (5)

July 27 to August 12/8-11:30 am/MTWThF

See description above.

ADM 205 11097

General Science

ISC 120 Introduction to Geology (5)

8-week/10:30-11:30 am/MTThF

Study of the principles of modern geology with consideration of both the physical and historical aspects. Topics will include: modern plate theory, tectonics, uniform processes and the fossil record. Four hours lecture and three hours of laboratory per week. Arranged weekend field trips. Prerequisite: MT 101, 107 or above. Core Option Smith/ENGR 304**12983**

ISC 480E Environmental Philosophy (5)

7-week/10:30 am-12:30 pm/MWF

An examination of the two key debates: anthropocentrism (human-centered view of the world) vs. non-anthropocentrism, and individualism vs. ecological holism. Several specific environmental problems are treated, including animal rights issues. Prerequisite: PL 220. Core. Also listed under PL 309. Dombrowski/ADM 306**11866**

History

HS 120 Origins of Western Civilization (5)

7-week/10:20-11:40 am/MTWThF

Traditional societies of the Western world, their values, institutions and historical development from ancient times to the modern era. Core Option. Madsen/ADM 224**10861**

HS 121 Studies in Modern Civilization (5)

First 4-week/9:10 am-2:20 pm/MTWThF

The process of modernization in the West and in the world. Core option. Mann/P 456**10893**

HS 121 Studies in Modern Civilization (5)

First 4-week/8-10 am/MTWThF

See description above. Core option. Taylor/ADM 224**10887**

HS 121 Studies in Modern Civilization (5)

8-week/5:30-8 pm/MW

See description above. Parry/ADM 205**10902**

HS 393E Historical Geography (5)

7-week/11:50 am-1 pm/MTWThF

This course examines the impact of physical environments on human life, thought and institutions (religious, political, social, economic) as these develop over time. The professor will present several historical case-studies (Mesopotamia, Egypt, Japan, the Roman Empire, Britain and the U.S.). Students will prepare and present in-class analyses of geographic impacts on the histories of selected contemporary countries. Mann/P 455**13059**

HS 419 Great Historical Figures (5)

7-week/10:30-11:40 am/MTWThF

The analysis of great historical figures in the context of their times. Individual subjects to be chosen in consultation with the professor. Dilemmas of self-revelation, psychological inference, role playing, sources, secular hagiography and mythography, etc. Fisher/ADM 204**13351**

Institute of Public Service

PUB 512 The Implementation Process (3)

8-week/5:30-8:50 pm/W

How public policies become public programs. Interplay of executive, legislative, judicial, and administrative branches. Influence of public bureaucracies upon policy making. Intergovernmental and interagency relations. MPA core. Prerequisite: PUB 511. Duca/ADM 223**12246**

PUB 521 Human Resource Leadership (3)

8-week/5:30-8:50 pm/T

Leadership in public and non-profit organizations. The manager's job as leader in decision making, conflict regulating, team building, and visioning. Individual behavior in organizations. MPA core. Peters/ADM 223**12258**

PUB 531 Management Analysis and Control II (3)

8-week/5:30-8:50 pm/M

The role of budgeting, including purpose, type, and use; capital budgeting, bonding, and debt management; planning, programming, and performance analysis. MPA core. Prerequisite: PUB 530. Collins/ADM 223**12271**

PUB 540 Policy and Program Research (3)

8-week/5:30-8:50 pm/Th

Research design for public decision making. Specification of questions to guide inquiry; basis for casual inference; acquisition of quantitative data; reliability and validity issues; descriptive statistics; and the logic of statistics. MPA core. Peters/ADM 223**12292**

PUB 570 Economic Analysis (3)

8-week/5:30-8:50 pm/T

Focus on the development of economic models, and upon the application of models to issues of public policy and management. Concepts of production, cost, supply, demand, market analysis, welfare, employment theory, and stabilization policy. Prerequisite for PUB 571. Sawyer/ADM 321**12318**

PUB 585 Management of Change (3)

**8-week/F, July 8 and 15, 6-9 pm/
S, July 9 and 16, 10 am-4 pm/
Su, July 10 and 17, 10 am-1 pm**

A course on the future: forecasting methods, trends, scenarios. Discussions of change processes (diffusion, revolution, attitude change) and methods of responding. Course will be presented in a two-weekend format. Mills/ADM 305A**12391**

Course Descriptions

PUB 591C Labor Law and Collective Bargaining (3)

8-week/5:30-8:50 pm/M

History and analysis of legislation and court intervention in labor relations. Organization, bargaining, and grievance systems. Simulations to gain experience. One all day Saturday required (July 30).

Hammond/ADM 322 **12354**

PUB 592C Strategic Management of Public Relations (3)

8-week/Arranged

Development and execution of a strategic perspective for public organizations. Includes defining missions, values, and vision developing planning and issues management systems; conducting the environmental scan and the institutional audit. Strategic use of ongoing organizational processes, including budgeting, human resource management, affirmative action, and constituency/clientele relations. Course will be presented in a two-weekend format.

Mills/Arranged **12372**

PUB 593C Cross-Cultural Bureaucratic Systems (3)

M July 15, Aug. 1, 8, and 15, 5:30-8:50 pm

This course is designed to offer a comparative perspective of bureaucratic and administrative systems and politics in a different cultural context. Students will learn various methods for comparing administrative and political systems and have the opportunity to apply these in the case of Turkey. The purpose of this experiential course is to provide students with exposure to administrative systems in a developing nation. It is also hoped that the student will enhance his/her appreciation of cultural diversity. This course includes 21 days of travel and study in Turkey. Total cost is tuition plus travel expenses. For further information contact instructor.

Duca/ADM 203/NOC 001 **12421**

Institute for Theological Studies/SUMORE

ITSA 596 Independent Study (1-6)

Arranged

Staff/Arranged

ITSA 599 MDiv Completion Project (3-6)

Staff/Arranged

3 credit 13821

4 credit 13839

5 credit 13842

6 credit 13850

ITSM 500 Christian Anthropology (3)

2-week, August 1 to 12/9-11:50 am/MTWThF

Exploration from a Christian perspective of the mystery of human existence. Examination of the structures of human being: self-transcendence, finitude, freedom, destiny, relatedness, autonomy, growth, and history. Special attention to the horizons which shape human life, to the roots of the possibility of religion, grace, and sin in the human.

Rolheiser/P 354 **11169**

ITSM 502 Ecclesiology (3)

2-week, August 1 to 12/2-4:50 pm/MTWThF

Examination of understanding of church from New Testament times through the present, with attention to the strengths and weaknesses of each image/model/conceptualization and with an eye to articulating an ecclesiology for our time. Examination of the issues which face the church today; women and the church, leadership, local church-universal church tension, authority. Prerequisite: ITSM 500. Permission of director.

Padovano/P 354 **11800**

ITSM 505 Sacramental and Liturgical Theology (3)

2-week, August 1 to 12/9-11:50 am/MTWThF

The Christian Community is brought into being and is nurtured through an encounter with God, through Christ, in the Holy Spirit, by means of Word and Sacrament. This course examines the behavioral and theological dynamics at work in this encounter, the relationship between ritual action and theological reality. A balance of readings, lecture, and discussion will introduce the students to the historical, and theological and behavioral foundations of liturgy, as well as helping them develop a critical "liturgical sense."

Janouiac/P 305 **11811**

ITSM 529 Biblical Spirituality (3)

2-week, July 18 to 29/9-11:50 am/MTWThF

Through careful study of selected texts from the Hebrew Bible and Christian scripture, students will construct the underlying spiritualities. Exploring this variety of where and how biblical generations expected God to appear and act will lead to tools and methods for integrating belief, attitude, affection, prayer, and action in the students' own lives.

Eblen/Barta/P 354 **11825**

ITSM 548 Theological Reflection in Ministry (3)

2-week, July 4 to 15/9-11:50 am/MTWThF

This course will help participants examine their intuitions and experiences of pastoral transition as a framework for exploring future trends in ministry. Incorporating both lecture presentation and structured discussion, the process will emphasize theological reflection rather than historical survey; that is, doing rather than studying a theology of ministry.

Eblen/P 354 **11844**

ITSM 549 Interpersonal Process (2)

2-week, July 4 to 15/2-4:30 pm/TWThF

This course explores the essential communication skills which enable and sustain healthy interpersonal relationships: attending and listening to self as well as others; knowing and naming feelings; expressing feelings appropriately. The emphasis is on biblical-psychological integration of relational skills. Majors only. Permission of director.

Ferder/Heagle/P 354 **11879**

ITSM 550 Conflict Resolution (2)

2-week, July 18 to 29/2-4:30 pm/MTWTh

This course enables participants to become more effective in negotiating the large and small daily conflicts in their personal and professional lives. The format includes theory, input, interpersonal sharing, skill building and awareness exercises. Topics include concepts of conflicts, personal attitudes and beliefs, types of conflicts, the role of emotions, communication skills and negotiating to achieve mutual interest. Majors only. Permission of director.

Rochelle-Stephens/P 354 **11882**

ITSM 551 Organizational Dynamics (3)

2-week, July 4 to 15/9-11:50 am/MTWThF

The church's future is shaped at the point where lived experience (praxis) and sound reflection (theoria) intersect. The course will draw upon life experiences of participants from the various religious and civic settings in which they have played a part, as leaders or as members. Using constructs derived from the whole field of organizational development, the facilitator will engage the members in guided reflection, leading to personal decisions concerning ways they might intervene more effectively in these systems in the future. Majors only. Permission of director.

Wilson/P 306 **11898**

ITSM 555 Practicum I (2)

1-week, July 18 to 22/6:30-9 pm/MWF

During the practicum students reflect on their ministries and their relationships in order to determine areas of personal growth. A holistic growth plan is introduced and used as the basis for a growth covenant. Majors only. Permission of director.

Staff/P 354 **11903**

ITSM 556 Practicum II-A (2)

July 8 and July 15/2-4:30 pm/F

In this practicum the focus is on personal growth as professionals within the Church. Students develop a process to help formulate professional goals that will enhance performance and determine how to work with a local mentor as they pursue these goals. Majors only. Permission of director.

Staff/Arranged **11912**

ITSM 556 Practicum II-B (2)

July 22 and July 29/2-4:30 pm/F

In this practicum the focus is on personal growth as professionals within the Church. Students develop a process to help formulate professional goals that will enhance performance and determine how to work with a local mentor as they pursue these goals. Majors only. Permission of director.

Staff/Arranged **11929**

ITSM 561 Prayer and Spirituality (3)

2-week, August 1 to 12/2-4:50 pm/MTWThF

This course is designed to introduce the student to the most important themes in contemporary spirituality and to a variety of approaches to prayer. Students will be invited to apply these themes to reflect upon and articulate their personal spirituality and to evaluate the theological and pastoral implications of these different approaches to prayer and spirituality. Keeping a prayer journal is strongly recommended for this course. The sessions will include lecture, prayer experiences, reflective times and discussion.

Kovats/P 305 **12129**

ITSM 563 History of Christian Spirituality (3)

2-week, July 18 to 29/2-4:50 pm/MTWThF

This course is designed to introduce students to the rich variety within Christian spirituality through the study of selected text and visual images. Special attention will be paid to themes such as silence, poverty, imagination, friendship, etc., understood in the tradition to be central to personal and communal spiritual transformation. Emphasis will be given to theological reflection in which students and instructor will collaboratively integrate, reinterpret or revitalize these themes in light of their own ministry and prayer.

Boroughs/P 306 **12175**

ITSM 581 Teaching and Learning in the Faith Community (3)

2-week, July 4 to 15/2-4:50 pm/MTWThF

This course will be organized around four significant dimensions of the teaching/learning process: context; learner; content; teacher. Participants will first be given an opportunity to reflect on their present practice or experience of teaching, then explore and evaluate a variety of teaching models for educating in faith, with the aim of becoming more creative and intentional teacher/ministers.

Liddy/P 305 **12130**

ITSM 582 Developing Religious Imagination (3)

2-week, July 18 to 29/2-4:50 pm/MTWThF

This course will place in dialogue our understanding of the nature and purpose of religious education with recent philosophical reflections or imaginations. It will explore the relationship between religious education and imagination and will examine the implication of this relationship for the way we teach and will also offer practical suggestions for increasing our creative and imaginative abilities.

Gilligan/P 305 **12148**

ITSM 585 Perspectives on Aging (2)

2-week, July 4 to 15/6:30-9 pm/MTWTh

This course is designed as an overview of how physiological, psychological, and social aspects of aging interrelate across the lifespan. How the individual interacts with the systems around him or her will be explored. The question of what is "abnormal" vs. "normal" in the aging process will be addressed. Health promotion and illness, family and family systems and networks, the politics of aging, and mental health and mental illnesses for older adults are among some of the topics to be discussed.

Richards/P 306 **12156**

Course Descriptions

ITSM 586 Issues in Aging: Ethics and Moral Decisions (2)

2-week, July 18 to 29/6:30-9 pm/MTWTh

Identification of pastoral responses to older adults and their families. Students are invited to identify their own experience with older adults in the Church and to relate their experience to cultural, political and environmental influences as they relate to the aging process.

Secker/P 306 **12167**

ITSM 592B U.S./Hispanic American Theology (2)

2-week, August 1 to 12/2-4:30 pm/MTWTh

Situated between Euro-American and Latin American theologies, Hispanic theologians are addressing key issues: method, fundamental theological themes, the use of scripture, the roles of women and their own context. This course will examine some of the most creative new theology from within the Hispanic community.

Rodriguez-Holguin/P 306 **12764**

ITSM 594B Communion of Earth and Spirit (2)

1-week, August 7 to 13

Unique live-in immersion experience on both Whidbey and Orcas Islands designed to enable participants to build a sensitized and knowledgeable connection with creation. Focus will be on building a theological perspective which integrates theology, spiritual development, ecological understanding and creative discipleship.

Staff/NOC 001 **12214**

ITSM 594C Christianity and Cosmos (3)

2-week, July 4 to 15/9-11:50 am/MTWThF

An exploration of Christian traditions relative to the spiritual nature of the universe, the role and place of humans and other living things, cosmology and its impact on the understanding of human existence and the current ecological crises. This unique learning opportunity will include the classroom field trips and experiences. Requires an all day and evening commitment.

Staff/BA 403 **12223**

ITSM 598 Independent Study (1-6)

Arranged

Staff/Arranged

ITSM 599 Completion Project (3)

Arranged

Staff/Arranged **12181**

Interdisciplinary Social Science

ISS 120 Social Science Inquiry (5)

7-week/10:30-11:40 am/MW

Poverty in America, its causes and consequences, is the central theme of this introduction to the analytic methods of sociology, economics, and political science. Students investigate case studies of real people, interpret aggregate data, assess existing programs, and propose new public responses to this growing problem.

Scharf/ADM 202 **10951**

Mathematics

MT 130 Elements of Calculus for Business (5)

First 4-week/7:50-10 am/MTWThF

Limits; continuity; differentiation; integration; applications to business. Prerequisites: MT 118 or MT 111 or equivalent core option.

Yandl/BA 402 **11140**

MT 222 Discrete Structures (5)

7-week/7:50-10 am/MTTh

Logic; set theory; equivalence relations and partitions; algebraic structures; combinatorics; graph theory; applications to computer science. Prerequisites: MT 135 and programming course.

Guy/BA 301 **11152**

Military Science

MS 296C Independent Study (3)

8-week/Arranged

Composite of freshman and sophomore courses.
Sain/CC 155 **12741**

MS 315 Advanced Camp (4)

8-week/Arranged

Cadet evaluation and leadership practical experience. Prerequisites: MS 311, 312, 313.
Kahue/CC 155 **12753**

Philosophy

PL 110 Introduction to Philosophy and Critical Thinking (5)

First 4-week/8:15-10:20 am/MTWThF

Key philosophical problems provide the context for developing habits of critical reflection, logical reasoning and argumentative writing. Prerequisite: EN 110. Core requirement.

O'Brien/ADM 307 **11654**

PL 110 Introduction to Philosophy and Critical Thinking (5)

8-week/5:30-8 pm/TTh

See description above.

Hopkins/ADM 307 **11663**

PL 210 Philosophy of the Human Person-Bridge (5)

First 4-week/8:15-10:20 pm/MTWThF

This course is a modification of PL 220 for transfer students for whom PL 110 has been waived and who have had no previous introductory philosophy course. It introduces students to the nature of philosophical inquiry, includes the issues contained in PL 220, and is writing intensive. Core requirement for junior/senior transfers.

Burke/ADM 221 **11672**

PL 210 Philosophy of the Human Person-Bridge (5)

7-week/1:30-4:30 pm/TTh

See description above.

Hopkins/ADM 221 **11689**

PL 210 Philosophy of the Human Person-Bridge (5)

8-week/5:30-8 pm/MW

See description above.

Staff/ADM 307 **11691**

PL 210 Philosophy of the Human Person-Bridge (5)

Intersession/6-8:40 pm/MTWTh

See description above.

Risser/ADM 307 **11239**

PL 220 Philosophy of the Human Person (5)

7-week/10:30-11:40 am/MTWThF

Critical examination of the nature and powers of the human person. Special emphasis on the human knowing process and the problems of human freedom and personal responsibility. Prerequisite: PL 110. Core requirement.

Reichmann/ADM 307 **11242**

PL 220 Philosophy of the Human Person (5)

7-week/8-10 am/MWF

See description above.

Dombrowski/ADM 306 **11273**

PL 220 Philosophy of the Human Person (5)

8-week/5:30-8 pm/TTh

See description above.

Staff/ADM 221 **11284**

PL 220 Philosophy of the Human Person (5)

Second 4-week/1:20-3:50 pm/MTWTh

See description above.

O'Brien/ADM 307 **11296**

PL 260 Logic (5)

8-week/5:30-8 pm/MW

Systematic treatment of traditional logic. The themes of communication and language, division and definition, propositions, syllogisms, and the nature of science will be examined.

Bjelland/ADM 221 **11304**

PL 306 Philosophy and Psychology (5)

Second 4-week/1:10-3:50 pm/MTThF

Cross listed with PL 391E and PSY 391E. For description, see PL 391E below.

Stickers/ADM 321 **11726**

PL 309 Environmental Philosophy (5)

7-week/10:30 am-12:30 pm/MWF

An examination of the two key debates: anthropocentrism (human-centered view of the world) vs. non-anthropocentrism, and individualism vs. ecological holism. Several specific environmental problems are treated, including animal rights issues. Prerequisite: PL 220. Core. Also listed under ISC 480E.

Dombrowski/ADM 306 **11734**

PL 345 Ethics (5)

7-week/10:30 am-12:30 pm/MWF

A systematic study of ethical theory, the character of ethical reasoning and the levels of ethical discourse, with application of ethical theory to specific problems. Prerequisite: PL 210/220.

Core option.

Deltete/ADM 220 **11310**

PL 345 Ethics (5)

First 4-week/1:10-3:50 pm/MTWTh

See description above.

Burke/ADM 307 **11328**

PL 345 Ethics (5)

8-week/6-8:30 pm/MW

See description above.

Kidder/ADM 305A **11332**

PL 345 Ethics (5)

Second 4-week/8:15-10:20 am/MTWThF

See description above.

Stickers/ADM 307 **11355**

PL 345 Ethics (5)

Intersession/9-11:40 am/MTThF

See description above.

Staff/ADM 307 **11620**

PL 345 Ethics (5)

Intersession/6-9:30 pm/MWTh

See description above.

Staff/ADM 221 **11636**

PL 345 Ethics (5)

7-week/8-10 am/MWF

See description above.

Deltete/ADM 321 **11743**

PL 352 Health Care Ethics (5)

8-week/5:30-8 pm/TTh

Application of general ethical theory to basic problems encountered in the medical profession: fees, professional secrecy, rights of patients, abortion, transplants, drugs. Prerequisite: PL 210/220. Core option.

Bjelland/ADM 305A **11647**

PL 367 Gender and Social Reality (5)

7-week/9:10-10:20 am/MTWThF

A study of the influence of feminist thinking on metaphysics, epistemology, ethics, and the methodology of philosophy. Prerequisite: PL 210/220. Core interdisciplinary course. Also listed under SC 480E.

Kidder/ADM 220 **11702**

PL 391E Frankl and Scheler (5)

Second 4-week/1:10-3:50 pm/MTThF

An examination of the philosophical foundation of Viktor Frankl's theory of "logotherapy" in the existential phenomenology of Max Scheler. Prerequisite: PL 210/220. Also offered under PSY 391E.

Stickers/ADM 321 **11717**

Course Descriptions

Physics

PH 101 Introduction to Astronomy (5)

7-week/10:30-11:40 am/MTThF

(Lab, 10:30 am-12:30 pm/W)

Astronomy, the solar system: Description of the motions of celestial objects as seen from earth. Explanation of the motions from the early Greeks through the moderns. Survey of the physical properties and origins of the solar system, including the latest findings of the space probes. Core Science option.

Toutonghi/BA 401 **11174**

PH 201 Electricity and Magnetism (5)

7-week/9:10-10:20 am/MTThF

(Lab, 2:10-5 pm/Th)

Electric charge, forces, field, flux; Gauss' law electric potential; conductors, dielectrics, capacitance; current and resistance; DC circuits; magnetic forces, fields; inductance. Prerequisite: PH 200, MT 135.

Staff/BA 401 **11183**

PH 202 Waves, Optics and Thermodynamics (5)

7-week/7:50-9 am/MTThF (Lab, 2:10-5 pm/T)

Harmonic motion, mechanical and electromagnetic waves; reflection, refraction, dispersion, interference, diffraction and polarization, temperature, ideal gases, kinetic theory, second law of thermodynamics. Prerequisite: PH 201, MT 136.

Staff/BA 401 **11195**

Political Science

PLS 210 Local and State Politics (5)

8-week/5:30-8 pm/MW

Local, state, county, and special district government structures and political processes. Proposals for reform.

Hogan and Sperry/ADM 202 **10980**

PLS 305 Policy Process (5)

8-week/5:30-8 pm/MW

The interplay of the White House, Congress, administrative agencies, interest groups, and public media in setting priorities and forming public policy.

Young/ADM 204 **11022**

PLS 393E Cowboys and Indians (5)

8-week/5:30-8 pm/TTh

The methods of literary analysis, film criticism, ecological science, anthropology, sociology, history, economics, and political science are invoked to understand (1) Native American culture, (2) the European impact on that culture, and (3) the meaning of this historical experience for contemporary Americans.

Young/ADM 204 **11064**

PLS 493B European Community (2)

7-week/7-9:20 pm/M

Europe's optimistic efforts to create a truly united economy clash with national needs to combat recession in the face of global competition. How Europe deals with a single currency, the coordination of labor market and social policies, and the rising tide of immigration will have profound implications for the U.S. and the North American Free Trade Agreement.

Scharf/ADM 321 **11101**

Psychology

PSY 120 Introduction to Psychology (5)

7-week/7:50-9 am/MTWThF

General introduction to the modes of inquiry of scientific psychology includes nature, scope, and method; organic environmental and personal factors that influence human experience. Social science core option.

Kunz/ADM 305A **11207**

PSY 220 Individual and Society (5)

7-week/10:30-11:40 am/MTWThF

How the individual shapes society by interacting with the various cultural institutions and how society, in turn, shapes the individual, especially during the formative years. Social science II core option.

Kunz/ADM 222 **11215**

PSY 391E Humanistic Psychology (5)

First 4-week/8-10 am/MTWThF

A holistic approach to the study of human personality, with special emphasis given to optimal psychological functioning. Following an in-depth study of the major contributors to humanistic psychology and a review of self theory, the course relates emotions, roles, love, creativity, work, play, and sexuality to theoretical models of psychological health. Prerequisite: PSY 120.

Rosenblatt/ADM 323 **11221**

PSY 391E Psychological Aspects of AIDS (5)

Second 4-week/10 am-noon/MTWThF

The reality of AIDS is frightening to many, disgusting to others and ignored to some degree by all. This course will go beyond AIDS as a disease and address its powerful personal, social, economic, and political dimensions. Service.

Krycka/ADM 321 **12112**

PSY 391E Philosophy and Psychology (5)

Second 4-week/1:10-3:50 pm/MTThF

An examination of the philosophical foundation of Viktor Frankl's theory of "logotherapy" in the existential phenomenology of Max Scheler. Prerequisite: PL 210/220. Also offered under PL 391E.

Stickers/ADM 321 **12735**

Sociology

SC 391E Sex, Lies, and Greed: Deception and Desire in Our Lives (5)

First 4-week/9-11 am/MTWThF

What role does deception play in our lives, both public and private? What are the roots of deception? When do we willingly use and enjoy it? When does it cause us and others harm? This interdisciplinary course will analyze deception from psychological perspectives. The economic, social and personal consequences will be investigated. Materials will be drawn from historical and literary sources, recent incidents from Wall Street to Hollywood, and personal experience.

Lawrence/FA 119 **11250**

SC 480E Gender and Social Reality (5)

7-week/9:10-10:20 am/MTWThF

A study of the influence of feminist thinking on metaphysics, epistemology, ethics, and the methodology of philosophy. Also listed as PL 367. Core interdisciplinary.

Kidder/ADM 220 **11268**

Software Engineering (Graduate)

SE 502 Discrete Mathematics for Software Engineers (3)

8-week/5:30-8:30 pm/W

Mathematical logic, sets, graph theory, functions, relations, recursion, computability, and proof of correctness.

Staff/ENGR 304 **10855**

Theology and Religious Studies

RS 211 The Gospel of Jesus Christ (5)

7-week/9:10 am-12:10 pm/MW

Evaluation of the Gospels of Matthew, Mark, and Luke in their religious and cultural contexts in an effort to discover who Jesus was for the earliest Christian community and who Jesus can be for us today.

Early/ADM 305A **11751**

RS 217 The Message of Paul (5)

7-week/9:10 am-12:10 pm/TTh

Description of Christian experience given in Paul's letters; development of his thought in its original context; relation of his message to the contemporary world.

Early/ADM 305A **11765**

RS 267 Spiritual Traditions: East and West (5)

Second 4-week/10:30 am-12:30 pm/MTWThF

Study of the revelation-authority religions of the West (Judaism-Christianity-Islam) compared with the wisdom-experience traditions of Asia (Hindu-Buddhist-Tao-Shinto). Focus on historical data and scriptural texts of each tradition to understand different views of person, community, sacred world, and meditation as experienced relationship to the divine.

Duncan/ADM 221 **11778**

RS 293E Religious Experience in Autobiography and Story (5)

7-week /7:50-9 am/MTWThF

A study of religious experience as expressed in autobiographies by major religious thinkers such as St. Augustine of Hippo, Dorothy Day, Thomas Merton, Gandhi, C.S. Lewis and Malcolm X. Also offered as EN 391E.

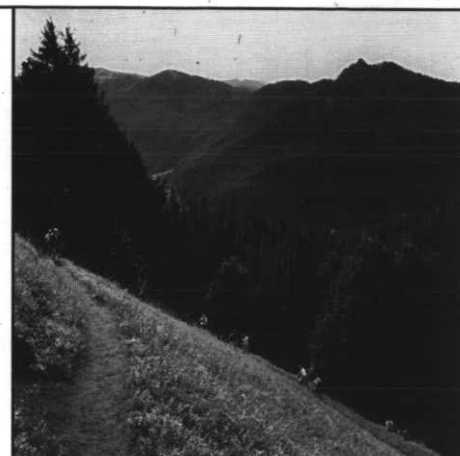
Leigh/ADM 220 **12450**

RS 301 Women and Theology (5)

8-week/5:30-8 pm/TTh

Exploration of central topics in feminist theology, e.g., naming the Sacred, the self in relation, transformation of the world. Discussion of what is involved in "doing theology" and what women bring to this discipline by attending to their own experience, interpretation and the power of their heritage.

Barta/ ADM 223 **13317**



RS 338 Human Sexuality: The Challenge of Love (5)

Second 4-week/10:30 am-12:30 pm/MTWThF

Examination of the uses and abuses of human sexuality in Western culture in light of Judeo-Christian tradition. Historical background and contemporary understandings of sexuality. Exploration of marriage and special problem areas in sexuality from a Christian perspective.

Chamberlain/ADM 223 **11799**

RS 393E Stories of God and Human Transformation (5)

7-week/9:10-10:20 am/MTWThF

Study of the link between biblical narratives and life stories with a focus on human transformation. The course includes an analysis of several films that exemplify secular translations of Christian conversion.

Navone/ADM 204 **12788**

Admission

Admission

For Degree-Seeking Undergraduate Students

Those who wish to enroll as degree-seeking undergraduates at Seattle University and obtain regular academic credit during the summer quarter must make formal application to the university. Application forms may be obtained from the Undergraduate Admissions Office, or use the form at the back of this bulletin. Applications, supporting documents and transcripts should be on file by May 20. International students residing overseas must submit a complete application by May 1.

For Degree-Seeking Graduate Students

All applicants to the Graduate School must request an application packet directly from the Graduate Admissions Office, Seattle University, Broadway and Madison, Seattle, WA 98122-4460, or call (206) 296-5900 or toll-free from within Washington, 1-800-542-0833.

Complete application packets for summer must be received in the Graduate Admissions Office by May 20. International application materials must be received by May 1.

NOTE: Some graduate programs have limited terms for entry and deadlines other than May 20. Request additional information on programs and deadlines from the Graduate Admissions Office.

Transitional Students

Admission as an undergraduate or graduate transitional student is granted for up to two quarters to students who are not enrolled in a degree program at Seattle University. Application forms for those wishing to enroll as undergraduate transitional students are available at the Undergraduate Admissions Office. NOTE: Transitional students are not eligible for financial aid.

Graduate transitional application procedures include submission of a graduate transitional application, required transcripts and approval from the departmental dean or program director. Not all programs accept transitional students. To request more information and an application, contact the Graduate Admissions Office at (206) 296-5900.

University credit will be awarded for successful completion of courses taken as a transitional student. Such credit may be applied toward a degree from Seattle University only after admission to a degree program.

Re-admission

Former undergraduate students not enrolled at the university for the spring quarter must apply for re-admission if they wish to attend summer quarter. Those who have not attended since receiving their degrees may be re-admitted as fifth-year students unless pursuing a master's or doctoral degree, in which case they must file for admission to the Graduate School. Applications and supporting documents should be on file by May 20 (undergraduate and graduate students). Graduate students retain registration eligibility for one calendar year. Those who have not attended since spring quarter 1993 must be re-admitted.

International Students

Specific admission requirements and procedures for all international students are listed on the university's international student application form. These criteria differ from those applied to United States citizens. Inquiries may be directed to the Undergraduate Admissions Office or the Graduate Admissions Office. The summer quarter deadline for international students outside the United States is May 1.

Auditing

Admission as an auditor must be requested through the Undergraduate Admissions Office and approved by the instructor of the course. An auditor will not be required to participate in class discussion or laboratory work. Assignments are at the discretion of the instructor. There is no auditing allowed for graduate or foreign language classes.

Alumni Audit

Undergraduate classes are open for non-academic audit to Seattle University alumni at \$55 per class. The following restrictions apply: A student may not be currently enrolled as a regular student at Seattle University; only undergraduate classes may be audited; no credit will be given nor academic record maintained.

Class availability is at the discretion of each instructor. Fees and applications for summer alumni audit must be received in the Alumni Relations Office no later than June 24, the fifth day of class. No refunds will be made after that date.

For further information about alumni audit, write to the Alumni Relations Office, Seattle University, Broadway and Madison, Seattle, WA 98122-4460, or call (206) 296-6100.

Elder Audit

Seniors 60 years of age or older may audit regular credit classes for a modest fee on a space-available basis with permission of the instructor. For further details, pick up an elder audit form from the Registrar's Office, or call (206) 296-5850.

Enrollment

Graduate Courses

Enrollment in graduate courses (numbered 500-699) is restricted to those admitted to the Graduate School to pursue a graduate degree or to those admitted as graduate transitional students. Students holding fifth-year status are not eligible to enroll in graduate courses without permission of the dean of the Graduate School.

Summer Graduate Course Load

For graduate students attending the entire eight-week session, a maximum load will ordinarily be 12 credits. In special circumstances, and with the permission of the department chair, a student may register for a total of 15 credits during this period. This is especially appropriate if the additional three credits are research or independent study that will not be completed during the summer quarter. In the case of SUMORE students, the limit will be 16 credits, since this group begins course preparation and readings well in advance of summer quarter.

For graduate students attending a four-week term, a maximum load will ordinarily be six credits. In special circumstances, and with permission of the department chair, a student may register for a total of nine credits during this period.

Undergraduate Course Load

A full quarter's credits (15 hours) may be earned during the summer.

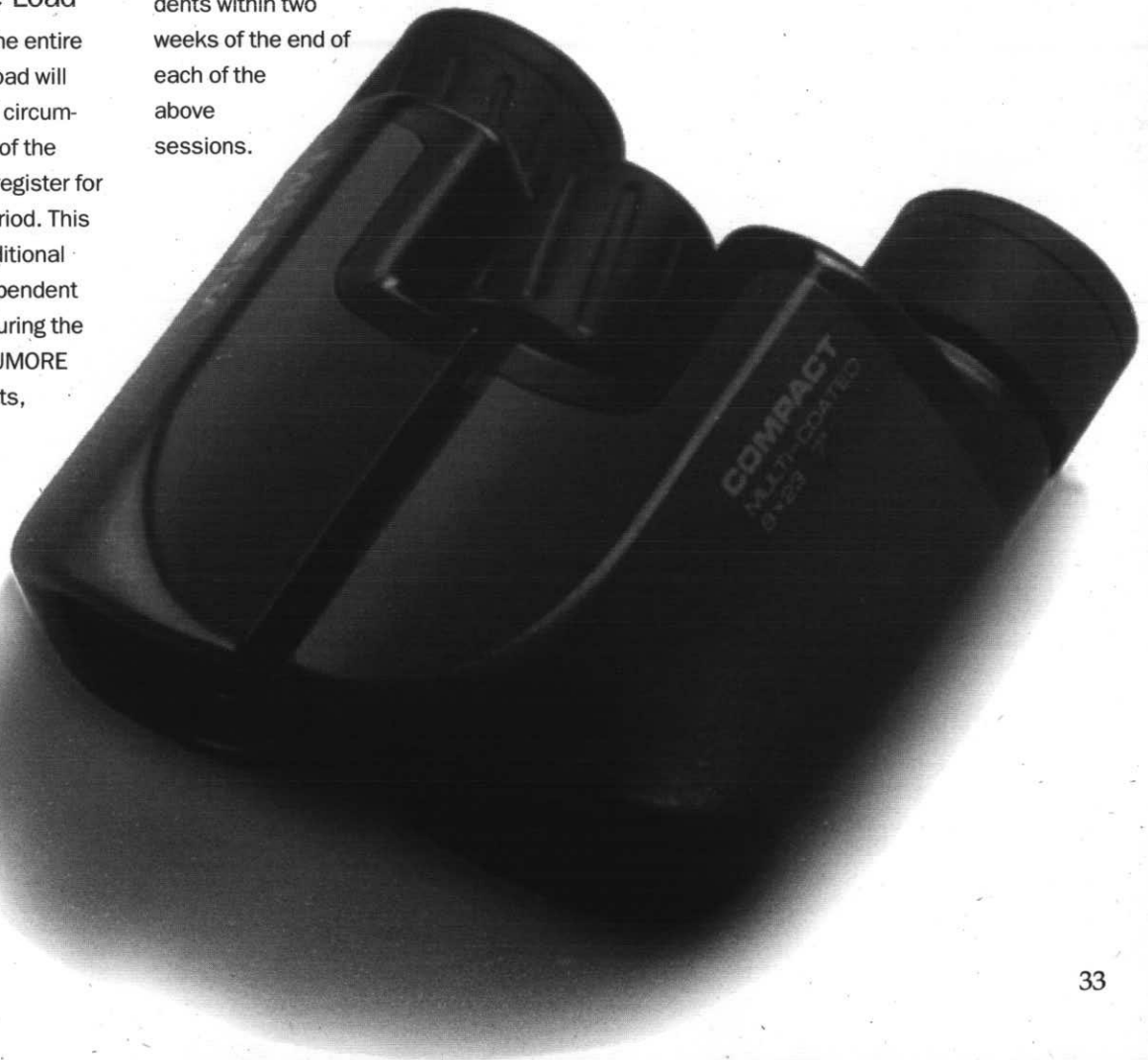
Records

The policy of Seattle University on the right of students' access to their educational records and on confidentiality of information conforms to current public law.

The full statement of policy is available for inspection in the Associate Provost for Academic Administration Office or the Registrar's Office.

Grades

Grade reports are issued twice, at the conclusion of the eight-week session and at the conclusion of the intersession. Grades will be mailed to all students within two weeks of the end of each of the above sessions.



Registration

Registration

May 18 through 20 and
June 5 through 26

Touchtone telephone registration for summer is from May 18 through 20 and from June 5 through 26. Any registration or add/drop to be completed after June 26 must be done **in person** at the Registrar's Office. Registration is open to students continuing from spring quarter and to new and re-admitted students. However, new and re-admitted students may not register until they have filed for admission and obtained an acceptance letter or re-admission notice.

When to Register

Contact your academic adviser early enough to schedule an advising appointment to enable you to complete your registration at the time indicated below. You may register on or after the day assigned for your class level, determined by the number of credits successfully completed at the time you register. (0-44 credits, freshman; 45-89 credits, sophomore; 90-134 credits, junior; 135 or more credits, senior). If you have questions regarding your class level, contact the Registrar's Office. Touchtone telephone registration hours are 7 am to 5 pm, May 18, 19 and 20, see details below; and every day except Saturday, during June 5 through June 26.

Graduate students (by appointment)	May 18
Seniors, fifth-year students and juniors	May 19
Sophomores and freshmen	May 20
Transitional and special students	May 20
Registration continues and add/drop begins	June 5

NOTE: Touchtone telephone registration will not be available for summer registration from May 21 through June 4.

How to Register

Seattle University students eligible to register for summer 1994 will complete the registration and add/drop process using the touchtone telephone registration system. However, if you have not completed your registration by June 26, you must register in person at the Registrar's Office, University Services Building, Room 104.

- Step 1. Contact your major department to arrange for an advising appointment.
- Step 2. Plan a program of study with your academic adviser.
- Step 3. Complete your touchtone registration worksheet. It is wise to list alternate course choices.
- Step 4. If you owe the university money, you will be unable to register until you clear your student account with the Controller's Office. If you have questions, call 296-5880.
- Step 5. Check the registration appointment schedule in the summer 1994 Schedule of Classes. The system will be available from 7 am to 5 pm, May 18, 19 and 20, and every day except Saturday, from June 5 through June 26. The last day to register and add/drop on the touchtone system is June 26.
- Step 6. Call 296-CLAS from any touchtone phone in the Seattle area. Out-of-area access is (206) 296-CLAS. Dial only CLAS if using a campus phone. The computer will prompt you with spoken instructions.
- Step 7. Enter your password, which is your student ID number (Social Security number) followed by the [*] key on your touchtone telephone and the summer quarter indicator [9][4][3], followed by the [#] key. Wait for a response.

Example of password:

Student ID Number	Term Indicator
[3] [3] [3] [3] [3] [3] [3] [3] [3] [*] [9] [4] [3] [#]	

Step 8. Enter each course selection using the five-digit course reference number found at the end of each course description, followed by the [*] key and your chosen grading option. You have three choices of grading options:

- a. If you wish to receive a letter grade, touch [0], followed by the [#] key.
- b. If you are eligible for pass/fail, touch [1], followed by the [#] key (not available for graduate courses).
- c. If you wish to audit, touch [2], followed by the [#] key (not available for graduate classes).

The system will read back your selected course reference number and ask if you wish to add or drop the course. Simply follow the spoken instructions.

See page 35 for special procedures if you intend to enroll in an independent study or a variable credit course, if you are enrolling for more than the maximum credit hours allowed for your school/college, if you have permission to enter a closed class, if you are repeating a class, or if you intend to withdraw from a class.

If you encounter a problem with your touchtone registration, call the Registrar's Office for assistance at 296-5850 between the hours of 8:30 am and 4:30 pm, Monday through Friday.

Within two weeks of completing your touchtone registration, you will receive a schedule confirmation by mail. Examine it carefully and report any problems to your academic adviser or the Registrar's Office.

Step 9. Pay your tuition and fees (see page 36 for details).

Special Procedures

Should your program of study include one or more of the following, please use the special procedures outlined below. Unless otherwise noted, enter all other course selections using the regular touchtone registration system. Bring your touchtone registration worksheet to the Registrar's Office, University Services Building, Room 104, and request a form for the appropriate special procedure below. Fill out the form and present it to the Registrar's Office.

NOTE: You must complete the special procedures by the last day to add or drop a course for the specific session you are attending (see page 7, Important Dates for Your Log).

- Independent Study
- Variable Credit Courses (Those listed without a course reference number.)
- Credits in Excess of Maximum Allowed
Written permission of the dean of your school or college must also be presented to the Registrar's Office along with your

touchtone registration worksheet (with credits up to the limit allowed, see page 33 for course loads allowed).

- Request to Enter a Closed Class
- Course Repeats

Withdrawal

To withdraw from a course, complete a withdrawal form and present it in person at the Registrar's Office. NOTE: Last day to withdraw from each session is listed on page 17, Important Dates for Your Log.



1994 Summer Schedule

	June	July	August	September
Seven-Week Session	[Blacked out]			
Eight-Week Session	[Blacked out]			
First Four-Week Term	[Blacked out]			
Second Four-Week Term		[Blacked out]		
Intersession			[Blacked out]	

Sample Touchtone Registration Worksheet

<i>Touchtone Thomas M.</i>				<i>S/E</i>	<i>Chem</i>				
Student Name	Last	First	Middle	School	Major				
[8][8][8][4][1][5][5][5][5][*][9][4][3][#]									
Student ID Number				Year	Term				
Course Reference Number	Grading Option	Course Number	Course Title	Credits	Time	Days	Room/Bldg		
[1][6][9][2][8][*][0][#]		<i>EN 110</i>	<i>Frosh English</i>	5	11 am	MF	P 354		
[1][4][3][0][7][*][0][#]		<i>PL 110</i>	<i>Intro. Phil</i>	5	10 am	MF	ADM 307		
[1][1][1][5][7][*][0][#]		<i>CH 122</i>	<i>Gen. Chem II</i>	4	9 am	MF	BA 301		
<i>alternate:</i> [1][4][2][4][9][*][0][#]		<i>PL110</i>	<i>Intro. Phil</i>	5	8 am	MF	P 352		
<i>drop:</i> [1][6][7][2][8][*][0][#]		<i>EN 110</i>	<i>Grading option not used for drop</i>						

For Academic Adviser Only

This student has been duly advised and I have lifted his/her adviser hold.

Dr. Beth Adviser *5-23-94*

Signature Date

White Copy - Student Pink Copy - Adviser

Tuition and Financial Aid

Tuition and Fees

Tuition fees are per credit hour unless otherwise noted.

Undergraduate Courses \$270	Educational Specialist Degree Program \$204	Laboratory Fees (usually per course)	Matriculation, undergraduate and graduate \$65
400-Level Education Courses \$204	Doctoral Program \$325	Private music lessons \$63	Credit by examination, per credit hour \$65
Graduate Programs (Master's degrees and post-master's certificates)	Certificate Programs	Science and Engineering laboratory courses \$58	Removal of incomplete ... \$35
Business/Economics/Finance \$350	Addiction/Drug Studies \$235	Psychology 385, 401 \$58	Vocal or instrumental lessons (per credit hour) \$270
Education \$204	Applied Social Research/Corrections \$270	Education 460, 527, 528, 547 \$44	International insurance ... \$75
Master in Teaching \$270	Health Information \$270	Occasional Fees (non-refundable)	NSF check fee \$15
Institute for Theological Studies \$270	Human Resources (Institute of Public Service) \$270	Application, undergraduate or transitional \$35	Miscellaneous Fees
Psychology \$293	Audit (undergraduate courses only) \$85	Application, graduate or transitional \$45	Room charge for eight-week session ... \$808
Public Administration \$293		Late fee \$200	Private room charge for eight-week session ... \$998
Software Engineering \$350			Parking permit \$10-59
			Disabled parking permit \$10-59

Tuition Payment Policy

Students registering for classes during advance registration starting May 18, may either pick up their statements in person or receive them in the mail after May 27. Students who register (or add/drop) after May 27 are expected to pick up their statements the same day at the Controller's Office.

Payment of tuition and fees includes library, health service and student activities fees. International students will automatically be charged insurance. An insurance waiver can be obtained from the International Student Center upon proof of insurance coverage. After a student registers for a course(s), the university commits a space in that course(s) for that student. It is the student's responsibility to pay all fees in full, whether the student attends the course(s) or not.

Tuition and fee payment for registered summer classes, including intersession classes, are due on or before June 15, 1994. Payment is due within one working day for classes registered after June 15, 1994. Payments made after due time are subject to the late registration/late payment policies.

Failure to pay in full all tuition and fees of any session or term may result in a hold on the student's transcript and may prevent registration in subsequent quarters. To avoid lines, students are encouraged to pay tuition and fees by mail. Checks should be made payable to: Seattle University, PO Box 84107, Seattle, WA 98124-5407, or delivered in person to the Controller's Office. Visa or MasterCard payments may also be made using the pay stub at the bottom of your statement or in person.

Late Registration and Late Payment Policy

A late fee of \$200 will be charged if tuition and fees are not paid in full according to the session or term you are attending (see tuition payment policy for more detail). Late processing fees and interest fees shall apply to all checks not honored by banks and returned to Seattle University. A charge of one percent on any balance due at the end of the month will be charged if tuition and fees are not paid in full by the tuition due date.

Although Seattle University reserves the right to change its charges at any time without prior notice, after the beginning of a quarter no change will be made effective for that quarter.

Tuition Refund for Class Withdrawal

Adjustments are based on the number of calendar days, defined as consecutive Mondays through Fridays, beginning the first day of each session. The adjustment policy applies to complete withdrawal or reduction in class load. The official date of withdrawal from a course is considered to be the date a student submits the withdrawal or change form to the registrar. An adjustment to a financial aid recipient is applied first to the student's financial aid source(s), and the balance, if any, is remitted to the student.

Credit balances created because of tuition adjustments may be remitted to students upon the request of the student.

If tuition and/or fees have not yet been paid, the portion normally not adjusted is due and payable together with the handling charge. Failure to pay non-adjusted tuition and fees will result in transcript holds and will prevent registration in subsequent quarters.

Tuition Refund Insurance is available prior to the beginning of the summer quarter to cover tuition costs for those who withdraw for medical reasons. For details, contact the Controller's Office.



Withdrawal (full or partial) from Eight-Week Session

6/20-6/26	100%
6/27-7/3	80%
7/4-7/10*	70%
7/11-7/17	60%
7/18-7/24	50%
7/25-7/31	40%
Thereafter	No refund

Withdrawal (full or partial) from Seven-Week Session

6/20-6/26	100%
6/27-7/3	80%
7/4-7/10*	60%
7/11-7/17	50%
Thereafter	No refund

Withdrawal from First Four-Week Term

6/21	100%
6/22-6/26	75%
6/27-7/3	50%
Thereafter	No refund

Withdrawal from Second Four-Week Term

7/19	100%
7/20-7/24	75%
7/25-7/31	50%
Thereafter	No refund

Withdrawal from Intersession

8/17	100%
8/18-8/19	50%
Thereafter	No refund

Withdrawal from Short Courses

First class meeting	100%
Thereafter	No refund

*Includes Holiday

Financial Aid and Student Employment

During the summer quarter, loans, work study and, for some eligible students, Pell Grants are available. In order to apply for financial aid for the summer quarter, students must have completed the 1993-94 Free Application for Federal Student Aid (FAFSA) and/or the 1994-95 FAFSA. Please consult with the Financial Aid Office to determine which form you need if you are a new student or a graduating student. Continuing students should complete both forms. It will take approximately four weeks to process the FAFSA.

Students must also complete a summer financial aid application, available at the Financial Aid Office beginning April 1. This application will be reviewed once the student's file is complete. Students applying for summer work study should apply as early as possible (before May 1) as funds are extremely limited. Students desiring Federal Stafford Loans or SLS must apply at least eight weeks prior to registration to ensure the availability of funds when tuition is due. The summer application will take up to four weeks to process.

Students qualifying for work study will receive a summer authorization form and may work from July 1 through September 14. Students enrolled less than half time may work full time during summer. The Financial Aid and Student Employment Office maintains a listing of both on- and off-campus jobs.

For more information concerning financial aid, call the Financial Aid Office at (206) 296-5840. For information regarding summer jobs, call the Student Employment Office at (206) 296-6084.

General Information

General Information

A.A. Lemieux Library

The reading room on the first floor is open every day from 7 am to midnight. Holiday hours are posted during the quarter. The library reserves the right to adjust the posted times as necessary.

Book Store

The Book Store is your source for all required textbooks and course-related supplies. In addition, it offers computers, general paperback books and reference books. The store also features a wide selection of sweatshirts, T-shirts and gift items with Seattle University imprinting. Other selections include greeting cards, snack foods and sundries. You may special order any book not in stock, leave your film for processing and sell your used books at the end of the quarter. If you have any questions, call (206) 296-5820.

Housing and Food Service is Available

Bellarmino Hall is the designated residence hall for single students enrolled during summer quarter. The hall opens June 20 at 9 am and closes August 13 at noon.

Contact the Residential Life Office, (206) 296-6274, for more information and an application for summer residence.

Summer residence hall registration forms will be ready April 1, 1994.

The room charge for the eight-week session is \$808. Shorter sessions are pro-rated for rooms and private rooms. Private rooms are limited. You may request a single room; however, it cannot be guaranteed until the beginning of summer quarter. The cost of a private room is an additional \$190 for the entire session.

All resident students must purchase a meal plan. There are several meal options available, depending on the level of service you select.

Students must check out by noon of the day following their last examination.

Parking

All parking on campus requires the display of a valid Seattle University parking permit. Permits may be purchased at the Controller's Office in the University Services Building at the beginning of summer advance registration. Take the receipt to the Safety and Security Services Office (USB 102) to obtain the permit decal.

All parking areas are restricted, reserved or otherwise regulated. Parking maps, parking information and security related information are available at the Safety and Security Services Office, University Services Building, Room 102, (206) 296-5990.

Disabled Parking

Parking spaces for the disabled are available in most parking areas. A Seattle University disabled parking permit must be displayed when parking in these designated areas.

Metro Bus Passes

Bus passes for Seattle University students are available at a 30 percent discount and may be purchased at the Safety and Security Services Office, University Services Building, Room 102. For transportation or related information, call (206) 296-5995.

Academic Calendar 1994-95

If you intend to continue your studies at Seattle University in fall quarter and beyond, the following dates will be of interest to you:

Fall Quarter 1994

March 1	Tues	Undergraduate financial aid priority deadline
June 1	Wed	Undergraduate application deadline
September 15	Th	Tuition and fees for fall quarter due
September 21	Wed	All classes begin
September 27	Tue	Last day to register or add/drop
November 11	Fri	Veteran's Day - no classes
November 16	Wed	Advance registration - winter 1995 begins
November 17	Th	Last day to withdraw with W grade
November 23-26	W-Sat	Thanksgiving - no classes
December 3	Sat	Last class day
December 5-8, 11	Mon-Th, Sat	Final examinations

Winter Quarter 1995

December 15	Th	Tuition and fees for winter quarter due
January 2	Mon	All classes begin
January 8	Sun	Last day to register or add/drop
January 16	Mon	Martin Luther King's Birthday - no classes
February 17	Fri	President's Day observed - no classes
February 26	Sun	Advance registration - spring 1995 begins
March 1	Wed	Last day to withdraw with W grade
March 11	Sat	Last class day
March 13-16, 18	Mon-Th, Sat	Final examinations

Spring Quarter 1995

March 15	Wed	Tuition and fees for spring quarter due
March 27	Mon	All classes begin
April 2	Sun	Last day to register or add/drop
April 14	Fri	Good Friday - no classes
April 15	Sat	Easter Holiday - no classes
May 21	Sun	Advance registration - fall 1995 begins
May 24	Wed	Last day to withdraw with W grade
May 29	Mon	Memorial Day observed - no classes
June 2	Fri	Last class day
June 5-8, 10	Mon-Th, Sat	Final examinations
June 10	Sat	Baccalaureate
June 11	Sun	Commencement

Summer Quarter 1995

May 17	Wed	Advance registration begins
June 19	Mon	Classes begin



Campus Map

Seattle University Campus

1 Administration Building (ADM)
Alumni Relations Office, Dean of the Graduate School, President's Office, Provost, Publications Office, Public Relations Office, Vice President of Finance, University Relations. *Wheelchair accessible to one floor.*

2 Bannan Building (BA) Biology, Chemistry, Electrical Engineering, Mathematics, Physics. *Wheelchair accessible entrance and elevator.*

3 Bellarmine Residence Hall (BEL)
Health Center, Marketplace, Residence Hall Association, Residential Life. *Wheelchair accessible entrance and elevator.*

4 Bessie Burton Sullivan Skilled Nursing Care Residence (BBS)
Wheelchair accessible entrance and elevator.

5 Campion Tower Residence Hall (CA) Campion Ballroom, The Cave. *Wheelchair accessible entrance and elevator.*

6 Campus Services Building (CS)
Mailing Services, Plant Services, Purchasing, Reprographic Services. *Wheelchair accessible to one floor.*

7 Casey Building (CSY) Addiction Studies, Commons, Communications/Journalism, Criminal Justice, Dean of the College of Arts and Sciences, English, Foreign Language, History, Honors Program, Institute for Theological Studies, Institute of Public Service, International Studies, Kinsey Gallery, Liberal Studies, Matteo Ricci College, Philosophy, Political Science, Psychology, Sociology, Summer School. *Wheelchair accessible entrance and elevator.*

8 Connolly Center (CC)
Club Sports, Intramural Sports, Military Science, University Sports. *Wheelchair accessible entrance and elevator.*

9 Engineering Building (ENG)
Civil and Environmental Engineering, Computer and Information Services, Computer Science and Software Engineering, Dean of the School of Science and Engineering, Mechanical Engineering, Writing Center, Wyckoff Auditorium. *Wheelchair accessible entrance and elevator.*

10 Fine Arts Building (FAB)
Fine Arts. *Wheelchair accessible entrance and elevator.*

11 Garrard Building (GA)
Wheelchair accessible to one floor.

12 Gene E. Lynn Building (GEL)
School of Nursing. *Wheelchair accessible entrance and elevator.*

13 International Student Center (ISC) *Wheelchair accessible to one floor.*

14 Jesuit Residence (JR)
Wheelchair accessible to main floor.

15 Lemieux Library (LL) Instructional Media Services. *Wheelchair accessible entrance and elevator.*

16 Loyola Hall (LOY) Children's Literacy Project, Women's Center. *Wheelchair accessible entrance and elevator.*

17 McGoldrick Center (MCG)
Campus Ministry, Career Development Center, Counseling Center, Minority Student Affairs, Peace and Justice Center. Not wheelchair accessible.

18 Pigott Building (P) Dean of the Albers School of Business and Economics, Dean of the School of Education, Entrepreneurship Center/Small Business Institute, Learning Center, Business Graduate Programs Office. *Wheelchair accessible entrance and elevator.*

19 Student Union Building (SU)
ASSU, Campus Assistance Center, Center for Leadership and Service, Chieftain, New Student Programs, Spectator, Student Development, Volunteer Center. *Wheelchair accessible to one floor.*

20 University Services Building (USB) Book Store, Evening Programs and Continuing Education, Controller's, Financial Aid, Graduate Admissions, Human Resources, Job Location and Development, Registrar, Safety and Security, Testing Service, Undergraduate Admissions. *Wheelchair accessible entrance and elevator.*

21 Xavier Residence Hall (X)
The Big Moose. *Wheelchair accessible entrance.*



Application for Admission/Re-admission

Undergraduate only (Graduate and graduate transitional applications available from Graduate Admissions Office)

Regular undergraduate, \$35 fee Transitional undergraduate, \$35 fee Re-admission, no fee

Full Legal Name-Last _____ First _____ Middle _____ Former _____

Mailing Address _____ Phone _____

City _____ State _____ Zip _____ Social Security Number _____

Check your academic status here:

Freshman Transfer 2nd Degree 5th Year Transitional

Birthdate _____ Birthplace _____ U.S. citizen? Yes No

Country of citizenship, if not U.S.A. _____

Type of visa _____

NOTE: TOEFL is required of all applicants whose native language is other than English.

Are you currently enrolled at Seattle University? Yes No

Have you ever enrolled at Seattle University? Yes No

If yes, list quarter _____ and year _____

Is there any other name under which you were enrolled? _____

Are you planning to earn a degree from Seattle University? Yes No

If yes, what major is desired? _____

If no, fill out the box below

NOTE: This form does **not** constitute registration. For planning purposes, please indicate the class(es) for which you wish to register.

Course # _____ Title _____ Term _____
First, Second, Intersession

Course # _____ Title _____ Term _____
First, Second, Intersession

Course # _____ Title _____ Term _____
First, Second, Intersession

The following biographical information in this shaded box is optional.

Sex:
 Female Male

Marital Status:
 Single Married

Ethnic Origin:
 American Indian/Alaska Native
 Asian American
 African American
 Hispanic American
 White American
 Foreign National
 Other _____

Religious Preference: _____

Application for Admission/Readmission

Please list all collegiate institutions, including Seattle University, in order of attendance

Institution	City	State	Dates Attended		Degree	Date Received	Major
			From	To			
1.	_____						
2.	_____						
3.	_____						
4.	_____						
5.	_____						

Current Employer-Name of Firm _____

Job Title _____ Business Phone _____

Business Address _____ City/State _____ Date Employed _____

Signature _____ Date _____

Mail completed application to:

Undergraduate Admissions Office
Seattle University
Broadway and Madison
Seattle, WA 98122-4460

Undergraduate Information: (206) 296-5800
Graduate Information: (206) 296-5900

Call Toll-Free:

From Inside Washington: 1-800-542-0833
From Outside Washington: 1-800-426-7123

Index

A.A. Lemieux Library	38	Evening Programs	3	Special Procedures	35
Academic Calendar	39	Financial Aid	37	Student Employment	37
Admission, Undergraduate Students	32	GMAT Preparation Course	4	Theological Studies, Institute for	4
Admission, Graduate Students	32	Grades	33	Touchtone Telephone Registration	34
Albers School of Business and Economics	4	Graduate Students Admission	32	Tuition and Fees	36
Alumni Audit	32	Housing and Food Service	38	Tuition Payment Policy	36
Application for Admission/ Re-admission	41	Important Dates	7	Tuition Refund for Class Withdrawal	37
Auditing	32	Institute for Theological Studies	4	Undergraduate Students Admission	32
Book Store	38	International Students	32	Withdrawal	35
Business and Economics, Albers School of	4	Late Payment Policy	36		
Calendar, Academic	39	Late Registration	36		
Campus Map	40	Library, A.A. Lemieux	38		
Course Load, Summer Graduate	33	Map, Campus	40		
Course Load, Undergraduate	33	Math Proficiency Course	4		
Culture and Language Bridge Program	5	Metro Bus Passes	38		
Disabled Parking	38	Off-Campus Sites	3		
Education, School of	4	Parking	38		
Elder Audit	33	Re-admission	32		
Elderhostel	5	Records	33		
Employment, Student	37	Refund, Tuition	37		
Enrollment, Graduate Courses	33	Registration	34		
		Sacred Universe Program	4		
		School of Education	4		



Product photos courtesy of Recreational Equipment, Inc. (REI). REI is a national retailer of quality outdoor gear and clothing, with five stores in Washington state.



Director of Summer School

Broadway and Madison
Seattle, WA 98122-4460

RETURN POSTAGE GUARANTEED

Second Class
Postage Paid at
Seattle, WA

SEATTLE UNIVERSITYIN THE JESUIT TRADITION

SUMMER HIGHLIGHTS

This summer continue your education at Seattle University. Inside, you'll find information about all kinds of educational opportunities for every type of learner. Whether you are fresh out of high school, eager to get a quick start on your college career, or you haven't been in a university classroom for more years than you care to admit, there's something for you here! Summer School course descriptions begin on page 10. Here's a sample:

Marine Biology (BL 491E)

Field study of the interrelationships of marine plants and animals within their environment. This course is conducted from June 14 to June 24 on Blakely Island in the San Juan Islands of North Puget Sound. (See page 10).

Film and Literature (EN 388)

An introductory study of the basic principles and techniques of film art, with emphasis on the complementary contributions of the screenwriter, the director, and cinematographer and the editor. (See page 23).

Great Historical Figures (HS 393E)

The analysis of great historical figures in the context of their times. Some individual subjects to be chosen in consultation with the professor. (See page 25).

Cowboys and Indians (PLS 393E)

Methods of literary analysis, film criticism, ecological science, anthropology, sociology, history, economics, and political science are invoked to understand Native Indian culture, the European impact on that culture, and the meaning of this historical experience for contemporary Americans. (See page 30).