

1990

1990 Bulletin of Information - Summer School

Seattle University

Follow this and additional works at: <http://scholarworks.seattleu.edu/bulletinofinformation>

Recommended Citation

Seattle University, "1990 Bulletin of Information - Summer School" (1990). *Bulletin of Information*. 139.
<http://scholarworks.seattleu.edu/bulletinofinformation/139>

This Bulletin is brought to you for free and open access by ScholarWorks @ SeattleU. It has been accepted for inclusion in Bulletin of Information by an authorized administrator of ScholarWorks @ SeattleU.



SUMMER SESSIONS

1990

Seattle University • **BULLETIN OF INFORMATION** • June 18 to August 10

Let Seattle U Work For You This Summer

Summer 1990

Director of Summer School
Joseph B. Monda, Ph.D.
Seattle University
Seattle, Washington 98122

Where to Call for Detailed Information

Admissions Office	296-5800
Addiction Studies Office	296-5350
Alumni Office	296-6100
Arts and Sciences, College of	296-5300
Bellarmino Hall	296-6280
Business, Albers School of	296-5700
Campion Tower	296-5600
Campus Ministry	296-6075
Continuing Education	296-5920
Controller's Office	296-5880
Counseling Center	296-6090
Education, School of	296-5760
Financial Aid Office	296-5840
General Studies	296-5310
Graduate School	296-5900
Housing (Resident Student Services)	296-6274
Institute for Theological Studies	296-5330
International Student Adviser	296-6260
Library, A.A.Lemieux	296-6230
Matteo Ricci College II	296-5405
Minority Student Services	296-6070
Nursing, School of	296-5660
Registrar's Office	296-5850
Science and Engineering, School of	296-5500
Student Life	296-6060
Summer School Director	296-5410
SUMORE-See Institute for Theological Studies	296-5330

For Information

OFFICE OF ADMISSIONS
(206) 296-5800

REGISTRAR
(206) 296-5850

SCHOOL OF EDUCATION
(206) 296-5760



**Seattle
University**
FOUNDED 1891



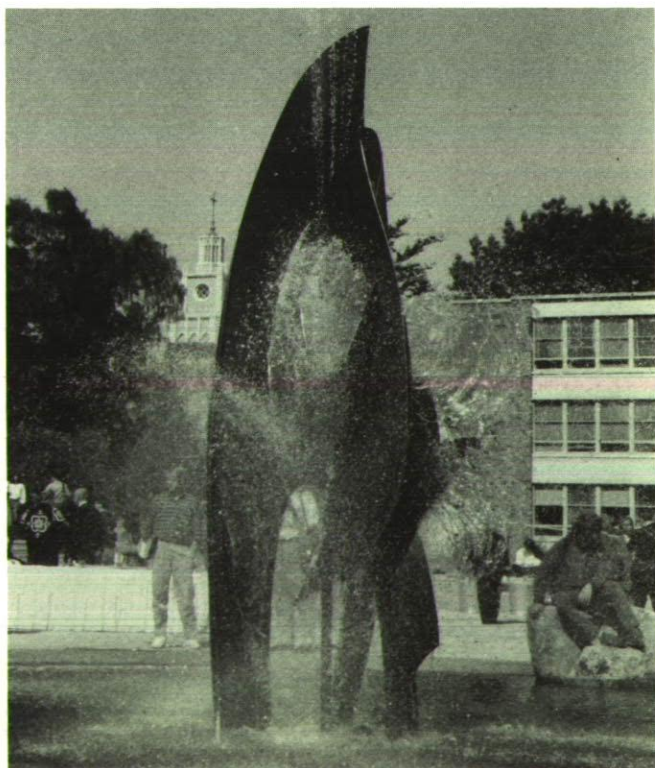
1891 - 1991
CELEBRATING A CENTURY
OF JESUIT EDUCATION

Bulletin of Information
USPS 487-740
Volume 21, No. 4
Summer 1990
Published Quarterly by Seattle University
Seattle, Washington 98122
Second class postage paid at Seattle, Washington

POSTMASTER: Send address changes to Summer School Director,
Seattle University, Seattle, WA 98122

An equal opportunity employer

Information concerning graduate and undergraduate programs may
be obtained in supplementary bulletins.



Academic Calendar

Summer 1990

7-Week Session	June 18-August 3
8-Week Session	June 18-August 10
First 4-Week Term	June 18-July 13
Second 4-Week Term	July 16-August 10

Touch-tone registration for summer begins May 2*
(For details see page 9.)

Classes begin for 7-Week and 8-Week Full Sessions and

First 4-Week Term	June 18
Last day to add or drop for full sessions and first term	June 22
Last day to drop courses with 100 percent refund for short terms	1st Day of Class
Touch-tone registration closes	June 22
Independence Day (no classes)	July 4
Last day to withdraw, first term	July 9
Close of first term	July 13
In-person registration for second four-week term	July 16-17
Last day to add or drop for second term	July 20
Last day to withdraw: second term and full sessions	July 27

Final Examinations:

First term	July 13
Seven-week full session	August 2, 3
Eight-week full session and second term	August 9, 10

* Note: Touch-tone registration for summer will not be available May 6 - May 20, the period during which advance registration for fall will be held. The system will re-open for summer registration on May 21.



Seattle University

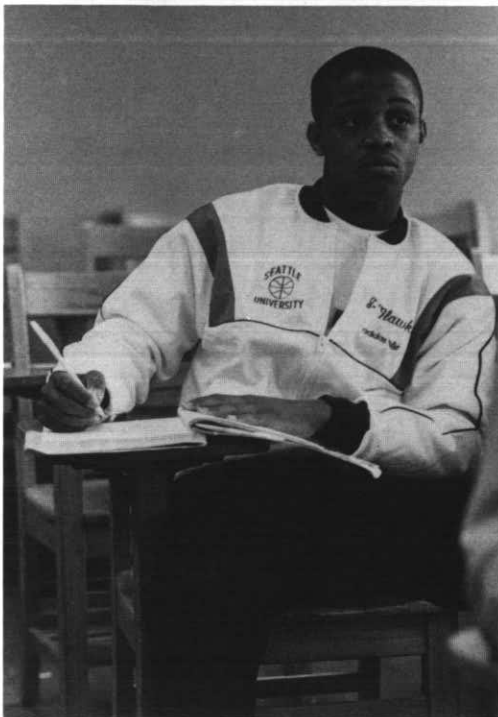
Seattle University is an independent, coeducational institution, operated under the auspices of the Society of Jesus with a faculty and staff which include Jesuits as well as lay people of various faiths.

The university is composed of nine major academic units (with 44 undergraduate and 16 graduate programs of study): the College of Arts and Sciences; Albers School of Business; School of Education; School of Science and Engineering; School of Nursing; Matteo Ricci College II; Graduate School; Institute of Public Service; and Institute for Theological Studies.

Seattle University is accredited by the Northwest Association of Schools and Colleges; National League for Nursing; American Chemical Society (Chemistry); Council on Rehabilitation Education; Committee on Allied Health Education and Accreditation (Diagnostic Ultrasound, Health Information Administration); Accreditation Board for Engineering and Technology (Civil Engineering, Electrical Engineering and Mechanical Engineering); National Council for Accreditation of Teacher Education; and the American Assembly of Collegiate Schools of Business. It is also a member of the Independent Colleges of Washington.

The university's professional education programs are approved by the State Board of Education. Students completing these programs are eligible for certification as teachers (upon completion of the masters in teaching degree), principals, superintendents, counselors, reading specialists, or school psychologists.

The Graduate School includes master's programs in business administration; psychology; public administration; counseling; adult education; education; educational administration; human resource development; theological studies; ministry; and software engineering. It also includes a doctoral program in educational leadership.



Of Special Interest

Addiction Studies

Symposium on Alcoholism: Focus on Youth

ADD 400; June 18-29, Daily, 9:00 a.m.-4:00 p.m., 3 credits

Alcohol and drug problems among young people have captured national attention. The 41st ANNUAL SYMPOSIUM ON ALCOHOLISM will focus on youth: childhood and adolescent alcohol and drug use patterns; progression in this population; developmental disruption; assessment and referral; treatment options and outcomes. This material will be interwoven with the fundamental concepts of alcoholism as described in the course overview listed on page 16.

Alcoholics Anonymous

ADD 422; July 2 and 3, Daily, 8:00 a.m.-6:00 p.m., 2 credits

Alcoholics Anonymous' International Convention will take place July 5-8, 1990, at Seattle Center, not far from the Seattle University campus. Plan to take this course in the days preceding the convention to enhance and deepen your convention experience. The course will explore the history, structure, traditions and program of AA; the psychology of the 12 Steps; use of 12-Step programs as a resource for treatment professionals. The course is open to treatment professionals, AA members, or anyone interested in this most effective recovery program for alcoholics. Anonymity as members of AA or other 12-Step groups will be respected. Attendance at the convention is encouraged, but not required for participation in this course.

Advanced Assessment for Addiction Counselors

ADD 491A; July 12 and July 19; 1:00-6:00 p.m., 1 credit

As the chemical dependency field becomes more complex, with an increase in the number of dual diagnosis clients, third-party utilization review, and demands for individualized treatment planning, the need for comprehensive assessment of clients becomes critical. This course reviews the many approaches to assessment and works toward a synthesis to assist counselors to meet these challenges. Good treatment planning depends on good assessment. This course is designed to provide skills directly applicable to working with clients.

Learning Disabilities and Addiction Treatment

ADD 491A; June 21 and June 28, 1:00-6:00 p.m., 1 credit

People recovering from chemical dependency have sustained a series of losses because of their dependencies. If they also have learning disabilities, their experience with care providers, as well as their success in chemical dependency treatment, may be adversely affected. Also offered under ED 491A.

Addiction in the Schools

ADD 491A; June 18-20, Daily, 9:00 a.m.-3:00 p.m.

This course provides an excellent follow-up to the 41st annual Summer Symposium, or stands alone as an overview of addiction problems in young people, particularly from the educator's perspective. The emphasis is on the middle and high schools. Also offered under ED 491A.

Developing Capable People: Family Building

ADD 491B; June 22 and 29, 7:00-10:00 p.m.; June 23 and 30, 8:00 a.m.-5:00 p.m., 2 credits

Prevention of chemical dependency among youth depends in part on strengthening the family unit. This course will provide to counselors, teachers and others who work with youth, powerful tools for developing young people's self-esteem, interpersonal skills, responsibility, judgment, sense of self-efficacy, and family stability. Based on a system developed by Stephen Glenn and Jane Nelson, authors of *Raising Self-Reliant Children in a Self-Indulgent World*. Many of these tools would work equally well with adults whose personal and social development has been affected by chemical dependency. Also offered under ED 491B. **Enrollment limited to 12 participants.**

Of Special Interest

Business

Competitiveness and Industrial Policy

BMBA 591C; 8-week, Saturdays, 1:00-4:15 p.m., 3 credits

Discusses the international competitiveness challenge to American business; the role played by governments in other industrialized economies, including the Japanese economy. Attempts to give prescriptions for the future.

Labor Relations and Collective Bargaining

BMBA 584; 4-week, T, 7:15-9:30 p.m. (June 19, 26, July 3) and Saturdays 10:00 a.m.-4:00 p.m. (June 30, July 7, 14), 3 credits

Historical development of labor management relations and current legal and regulatory systems, including collective bargaining, and future prospects. Emphasis is on developing skills in labor relations. Prerequisite: BMBA 508.

Intersession Summer 1990

MBA Students can fulfill elective requirements in a special four-week session, which will start August 13, 1990, and run through September 10, 1990. Each course will carry three MBA credits. The following courses will be offered:

BMBA 591C (BUSA 591) Real Estate Law (3 credits), MW, 5:35-8:45 p.m., August 13-September 10, 1990 (class does not meet September 3, Labor Day)

The course is designed to assist graduate students in evaluating and understanding real estate acquisitions. Topics covered include mortgages, deeds of trust; promissory notes, easements; liens; warranty deeds, quit claim deeds; encumbrances; taxes; legal descriptions; community property; joint tenancy; tenancy in common; strategies for investment, etc.

BMBA 591C (MGMT 591) Management for the 1990s (3 credits), TTH, 5:35-8:45 p.m., August 14-September 6, 1990.

This course will prepare an entrepreneur/manager to meet the challenges of the next decade. Topics covered include the business plan that gets money; entrepreneurial venturing; alliances; mergers; acquisitions; management of rapid growth; management of decline; turn-around issues; getting and serving on boards of directors and advisory boards for profit and nonprofit organizations. Management trends for the year 2000. Local company owners and managers will be guest speakers.

Education

Today's teachers must serve an increasingly diverse population. The courses listed below can provide some of the knowledge and skills needed to be successful in this work.

- | | | |
|------|-----|--|
| ED | 428 | Language Development |
| ED | 432 | Mainstreaming |
| ED | 450 | Intro to Gifted Education |
| ED | 452 | Gifted Education: Science |
| ED | 515 | Multicultures |
| EDCI | 533 | Gifted Education: Methods for Exceptionality |
| ED | 491 | Issues in Early Childhood Special Education |
| ED | 491 | Curriculum Design for the Gifted |
| ED | 591 | Special Education Administration |
| ED | 591 | Teaching Critical Thinking |

See Education section for specific dates and times.



Of Special Interest

English

Film and Literature

EN 391E; 7-week, Daily, 11:50 a.m.-1:00 p.m., 5 credits

An Introduction to Film art, the goal is to help students to see, understand, enjoy, and judge film more effectively, with assurance and validity.

Americans in Paris

EN 391E; August 12-26 in Paris, France, 5 credits

A social history of the expatriate community of writers and artists who celebrated Modernism in Paris in the 1920s. Contact Dr. Edwin Weihe, the instructor, for details at 296-5426, Casey 513.

Fine Arts

Video Profiles

DR 230; First, Daily, 7:50-9:00 a.m., 5 credits

Designed for people who will appear in public in various roles and situations: interviews, group discussions, panels and demonstrations. Students will be videotaped so that they may study themselves and evaluate the effectiveness of the appearances.

Piano Lessons

MU 110; 8-week, Arranged, 1-2 credits

Contact instructor or Fine Arts Department office before beginning of term to schedule lessons. Classes are credit/no credit. No auditors. Tuition plus \$47 per credit hour additional fee charged for private lessons.

Voice Lessons

MU 111; 8-week, Arranged, 1-2 credits

Contact instructor or Fine Arts Department office before beginning of term to schedule lessons. Classes are credit/no credit. No auditors. Tuition plus \$47 per credit hour additional fee charged for private lessons.

Pop and Rock 'n' Roll: the Music and its Culture

MU 391E; 7-week, Daily, 9:10-10:20 a.m., 5 credits

The history and cultural involvement of pop and rock 'n' roll from the '50s to the present. Music, politics and the greening of America. Lots of tunes, no required text. Come boogie.

History

Peace and War in Western Civilization

HS 317; 8-week, MWF, 10:30 a.m.-12:10 p.m., 5 credits

Examination of the major issues of peace and war in Western civilization from classical times to present.

Introduction to World Civilization

HS 391E; 7-week, Daily, 9:10-10:20 a.m., 5 credits

Introduction to problems of World History and comparative World culture with emphasis on problems of periodization.

Afro-American History

HS 391E; 7-week, Daily, 11:50 a.m.-1:00 p.m., 5 credits

Introduction to the Afro-American experience from slavery to civil rights.



Of Special Interest

Institute for Theological Studies

Issues in Parish Leadership

ITSS 571; July 16-27, Daily, 9:00-10:50 a.m., 2 credits

A unique opportunity to update your knowledge and thinking about the church at a time when 10 percent of U.S. parishes presently have no resident pastor and the number of available ordained priests is rapidly diminishing. Father Maurice Monette, OMI, consultant on the National Conference of Catholic Bishops' task force for professional lay ministries, and author of two books on alternative staffing of Catholic parishes, will explore the relationship of pastoral ministry to sacramental ministry and the centrality of the eucharist.

Revelations and Fundamentalism

ITSS 591B; July 30-August 10, Daily, 9:00-10:50 a.m., 2 credits

Have you wished you knew more about scripture so that you could understand bible-quoting fundamentalists who predict the end of the world and claim to know who will be saved? Father Stephen Rowan will take you on a journey through the New Testament's book of Revelations – the book most often used and quoted by fundamentalists. He'll help you discover the meaning and the power of the text, freeing you from dependence on those who read it simplistically.

Continuing Education

Non-Credit Programs for All Ages

For further information on the Continuing Education program write to: Continuing Education Department, Seattle University, Seattle, WA 98122. Or call (206) 296-5920.

Classes are not offered for academic credit, though they may qualify for Continuing Education Units. For a complete listing of upcoming courses and inclusion on the mailing list, contact the Office of Continuing Education.

Elderhostel .. for persons 60 and over

Seattle University is a participant in this major educational movement. Seven one-week, low-cost residential academic programs will be offered on campus, beginning June 19. REGISTRATION IS THROUGH THE BOSTON OFFICE ONLY. Write to: ELDERHOSTEL, 80 Boylston Street, Suite 400, Boston, MA 02116. Spaces are reserved each week for commuters, but number is limited. Contact the Continuing Education Department for further information.

Seattle University Alumni Audit

Undergraduate classes are open for non-academic audit to Seattle University alumni at \$35 per class. The following restrictions apply: 1) student may not be currently enrolled as a regular student at Seattle University; 2) no credit will be given nor academic record maintained; 3) classes offered for alumni audit are open on a space available basis. The requirements for work and class participation are at the discretion of each instructor. Fees and applications for summer alumni audit must be received at the Office of Alumni Relations no later than June 23, the fifth day of class. No refunds will be made after that date. For further information write to the Office of Alumni Relations, Seattle University, Seattle, WA 98122, or call 296-6100.

Elderaudit .. for persons 60 and over

Elders may audit classes for \$35 per class on a space-available basis with permission of instructor. For details contact the Office of Continuing Education.



Academic Information

Admission

Those who wish to be regular degree-seeking students at Seattle University and obtain regular academic credit during the summer quarter must make formal application to the university. Application forms may be obtained from the Office of Admissions, or you may use the form at the back of this Bulletin. Applications, supporting documents, and transcripts must be on file by May 18. International students must submit a complete application by May 1.

Transitional Students

Admission as a transitional student is granted to students who are not enrolled in a degree program at Seattle University. Admission into graduate courses as a transitional student will require permission of the graduate dean and submission of undergraduate transcripts.

University credit will be awarded for successful completion of courses taken as a transitional student. Such credit may be applied toward a degree from Seattle University only after admission to a degree program.

By special arrangement, superior high school students may be admitted to specific courses with transitional student status.

Readmission

Former undergraduate students not enrolled at the university for the spring quarter must apply for readmission if they wish to attend the summer quarter. Undergraduates who have not attended since receiving their degrees will be readmitted as fifth-year students unless pursuing a master's or doctoral degree, in which case the student must file for admission to Graduate School. Applications and supporting documents should be on file by May 18.

Graduate students retain registration eligibility for one calendar year. Graduate students who have not attended since spring quarter 1989 must be readmitted.

Registration

Touch-tone telephone registration for summer will be available from May 2 - 4 and from May 21 - June 22 (see page 9). Any registration or add-drop to be completed after June 22 must be done in person at the Office of the Registrar. Registration is open to students continuing from spring term and to new and readmitted students. New and readmitted students, however, may not register until they have filed for admission and obtained a letter of acceptance or notice of readmission.

Auditor

Admission as an auditor must be requested through the Office of Admissions and approved by the dean of the school and the instructor of the course. An auditor will not be required to participate in class discussion or laboratory work. Assignments are at the discretion of the instructor.

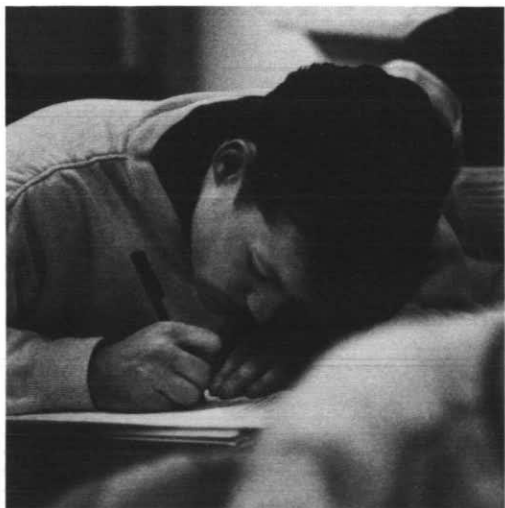
Graduate Courses

Restrictions: Enrollment in graduate courses (500-699) is restricted to those admitted to the Graduate School to pursue a master's or doctoral program. Students holding fifth year status are not eligible to enroll in courses numbered 500-699 without permission of the dean of the Graduate School.

Summer Graduate Course Load

For graduate students attending the entire eight-week session, a maximum load will ordinarily be 12 credits. In special circumstances, and with the permission of the chair, a student may register for a total of 15 credits over this period. This is especially appropriate if the additional three credits are research or independent study which will not be completed within the summer time frame. In the case of SUMORE students, the limit will be 16 credits, since this group begins course preparation and readings well in advance of summer session.

For graduate students attending a four-week session, a maximum load will ordinarily be six credits. In special circumstances and with permission of the chair, a student may register for a total of nine credits over this period.



Academic Information

International Students

Specific admission requirements and procedures for all international students are listed on the university's international student application form. These criteria and deadlines differ from those applied to United States citizens. Direct inquiries to the Office of Admissions.

Undergraduate Credit

A full quarter's credit (15 hours) may be earned during the summer.

Records

The policy of Seattle University on the right of students' access to their educational records and on confidentiality of information conforms to current public law. The full statement of policy is available for inspection in the Office of the Assistant Provost for Academic Administration or the Office of the Registrar.

Registration

Summer 1990

May 2, 3, and 4

May 21 - June 22

Contact your academic adviser early enough to schedule an advising appointment so you will be ready to complete your registration at the time indicated below. You may register on or after the day assigned for your class level. Class level is determined by the number of credits successfully completed at the time you register. (0-44 credits, freshman; 45-89 credits, sophomore; 90-134 credits, junior; 135 or more credits, senior). If you have questions regarding your class level, contact the Office of the Registrar.

Touch-tone telephone registration hours are 5:00 a.m. to 5:00 p.m., each Sunday through Friday, May 2, 3, and 4 and May 21 - June 22, 1990.

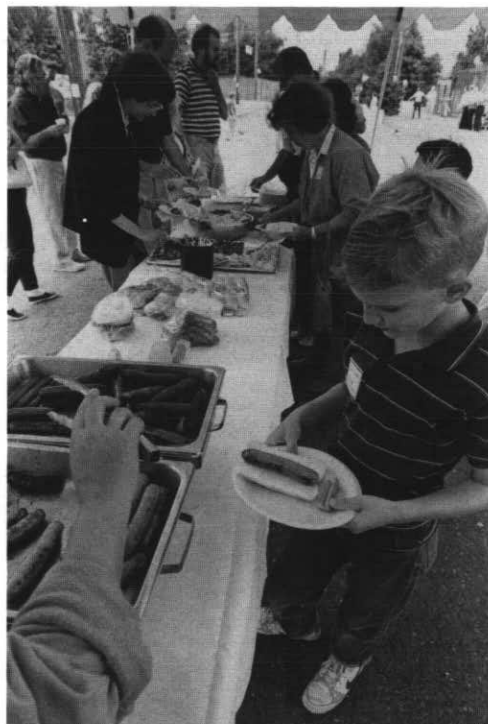
Graduate students Wednesday, May 2, 1990
Seniors, fifth year students, and juniors Thursday, May 3, 1990
Sophomores, freshmen, transitional, and special students Friday, May 4, 1990
Registration reopens and add/drop begins Monday, May 21, 1990

Note that touch-tone telephone registration will not be available for summer registration from May 6 - May 20.

Touch-Tone Registration Instructions

Seattle University students eligible to register for summer 1990 will complete the registration and add/drop process using the touch-tone telephone registration system. However, if you have not completed your registration by June 22, you must register IN PERSON at the Office of the Registrar, Room 104 - University Services Building.

- Step 1. Contact your major department to arrange for an advising appointment. The following departments place a hold on your ability to register until your academic advising is complete: Diagnostic Ultrasound, English, General Science, Religious Studies/Theology - undergraduates only, and Sociology. Advisers in those departments must lift the adviser hold on the touch-tone registration system before students may register.
- Step 2. Plan a program of study with your academic adviser.
- Step 3. Complete your touch-tone registration worksheet. Be certain to list alternate course choices.



- Step 4. If you owe the university money, you will be unable to register unless you clear your student account with the Controller's Office. (If you have questions, call 296-5880)
- Step 5. Check the registration appointment schedule on page 9 of the Summer 1990 Class Schedule. You may register on or after the day assigned to your class level. The system will be available Sunday through Friday, May 2, 3, and 4 and May 21 to June 22, 5:00 a.m. - 5:00 p.m. Note that the last day to register and add or drop on the touch-tone system is June 22.
- Step 6. Call 296-CLAS from any touch-tone phone (out-of-area access is (206) 296-CLAS). The computer will prompt you through the call with spoken instructions.
- Step 7. Enter your password which is your student ID number (Social Security number) followed by the [*] key on your touch-tone telephone and the summer term indicator [9][0][3], followed by the [#] key. Wait for a response.

```
[3][3][3][3][3][3][3][3][3][*][9][0][3][#]
```

- Step 8. Enter each course selection using the five-digit course reference number found in the first column of the Class Schedule, followed by the [*] key and your chosen grading option. You have three choices of grading options:
- A. If you wish to receive a letter grade, touch [0], followed by the [#] key.
 - B. If you are eligible for pass/fail, touch [1], followed by the [#] key (not available to graduate students).
 - C. If you wish to audit, touch [2], followed by the [#] key.

The system will then read back your selected course reference number and ask if you wish to add or drop the course. Simply follow the spoken instructions. See the "Special Procedures" section of these instructions if you intend to enroll in an independent study or a variable credit course, if you are enrolling for more than the maximum credit hours allowed for your school/college, if you have permission to enter a closed class, if you are repeating a class, or if you intend to withdraw from a class.

If you encounter a problem with your touch-tone registration, call the Office of the Registrar for assistance at 296-5850 between the hours of 8:30 a.m. and 4:30 p.m., Monday-Friday.

Within two weeks after you complete your touch-tone registration, you will receive a schedule confirmation by mail. Examine it carefully and report any problems to your academic adviser or the Office of the Registrar.

Step 9. Pay your tuition and fees. See page 12 for details.

Touchtone, Thomas P. S/E Chem.

Student Name	Last	First	Middle	School	Major								
1	1	1	4	1	5	5	5	5	*	9	0	3	#
Student I.D. Number Year Term													
Course Reference Number	Grading Option	Course Number	Course Title	Credits	Time	Days	Room / Bldg.						
1	6	9	2	8	*	0	#	EN 110	Fresh, Engl.	5	11 AM	M-F	P354
1	4	3	0	7	*	0	#	PL 110	Intro./Phil.	5	10 AM	M-F	Adm 307
1	1	1	5	1	*	0	#	CH 122	Gen. Chem. II	4	9 AM	M-F	Ba 301
1	1	1	7	8	*	0	#	CH 132	Gen. Chem. Lab.	1	2:10 PM	Th	Ba 301
ALTERNATE:													
1	4	2	4	9	*		#	PL 110	Intro./Phil.	5	8 AM	M-F	P352
DROP:													
1	6	9	2	8	*	X	#	EN 110	Grading option not used for drop				

For Academic Adviser Only

This student has been duly advised and I have lifted his/her adviser hold
Dr. Anne *Adviser* *2/17/90*
 Signature Date

White Copy-Student

Pink Copy-Adviser

Registration

Special Procedures

Advance Registration – May 2 - June 22

Should your program of study include one or more of the following, please use the special procedure as outlined below. Enter all other course selections using the regular touch-tone registration system. Note that you must complete the special procedures by the last day to add or drop a course for the specific session as indicated in the academic calendar on page 3 of this schedule.

1. **Independent Study**

Complete an independent study request form and present it in person at the Office of the Registrar (Room 104 – University Services Building).

2. **Variable Credit Courses (those listed without a course reference number)** Present your touch-tone registration worksheet in person at the Office of the Registrar (Room 104 – University Services Building) after you have entered all other course selections.

3. **Credits in Excess of Maximum Allowed**

Obtain the written permission of the dean of your school/college and present your touch-tone registration worksheet in person at the Office of the Registrar (Room 104 – University Services Building) after you have entered credits up to the limit allowed. (See page 8 of this schedule for course loads allowed).

4. **Request to Enter a Closed Class**

Present the completed "Request to Enter a Closed Class" form in person at the Office of the Registrar. (Room 104 – University Services Building).

5. **Course Repeats**

After completing your touch-tone registration, report in person to the Office of the Registrar (Room 104 – University Services Building) to notify the registrar of your repeat.

6. **Withdrawal**

To withdraw from a course, complete a withdrawal form and present it in person at the Office of the Registrar (Room 104 – University Services Building). Note the last day to withdraw from each session as listed in the academic calendar on page 3 of this schedule.

Grades

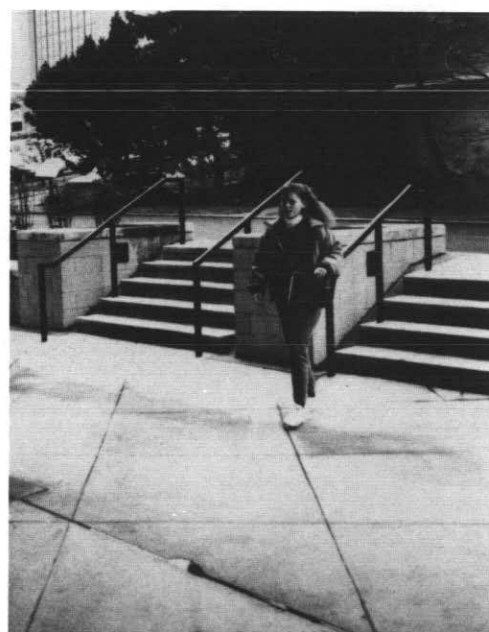
Grade reports and transcripts are issued only once at the conclusion of the entire summer term. Grades will be mailed to all students within two weeks of the end of summer quarter.

Library Hours

Summer library hours for the A.A. Lemieux Library will be from 8:00 a.m. to 10:00 p.m. Monday through Thursday; Friday from 8:00 a.m. to 5:00 p.m.; Saturday from 10:00 a.m. to 6:00 p.m.; and Sunday from 1:00 to 10:00 p.m. The reading room on the first floor will be open every day from 7:00 a.m. to midnight. Holiday hours will be posted during the quarter. The library reserves the right to adjust the posted times as necessary.

Book Store

The Book Store is your source for all required textbooks and course related supplies. In addition, it offers computers, a complete selection of general paperback books, and reference books. The store features a wide selection of sweatshirts, T-shirts, and gift items with Seattle University imprinting. Other selections include greeting cards, snack foods, and sundries. You may special order any book not in stock, leave your film for processing, and sell your used books at the end of the quarter. If you have any questions, call (206) 296-5820.



Financial Information

Tuition and Fees

Policy – Tuition Payment

Students registering for classes during the advance registration starting May 2, may either pick up their statements in person or receive them in the mail after May 31. Students who register (or add/drop) after May 31 are expected to pick up their statements the same day at the Controller's Office.

Payment of tuition and fees includes library, health service and student activities fees. International students will automatically be charged insurance. An insurance waiver can be obtained from the International Student Center upon proof of insurance coverage. After a student registers for a course, the university has committed a space in each course for each student. It is the student's responsibility to pay for all fees in full whether the student attends the course(s) or not. Tuition and fee payment for eight- and seven-week classes and the first session are due on or before June 18, 1990, the day classes begin for Summer School. Tuition and fee payments for the second session are due on or before July 16, 1990, the first day of the second session. Tuition and fee payments for short courses are due on the first day of the short course. Payments made after that time are subject to the late registration/late payment policies.

Failure to pay in full all tuition and fees of any quarter or session may result in a hold on the student's transcript and may prevent registration in subsequent quarters.

To avoid lines for payment, students are encouraged to pay tuition and fees by mail. Checks should be made payable to Seattle University and mailed to Seattle University, P.O. Box 84107, Seattle, WA 98124-5407, or delivered in person to the Controller's Office. VISA or MasterCard payments may also be made in person or by phone. Date of payment is determined by the date postmarked or by payment in person.

Policy – Late Registration/Late Payment

A late processing fee of \$40 will be charged if tuition and fees are not paid in full according to the session you are attending (see Policy–Tuition Payment for more detail). Late processing fees and interest fees shall apply to all checks not honored by banks and returned to Seattle University. A charge of 1.5 percent on any balance due at the end of the month will be charged if tuition and fees are not paid in full on the date classes begin.

Although Seattle University reserves the right to change its charges at any time without prior notice, after the beginning of a quarter no change will be made effective for that quarter.



Undergraduate courses – per credit hour\$199

Undergraduate education courses – per credit hour\$145

Masters programs – per credit hour

Business	\$258
Education	\$145
ITS(Corpus)	\$199
ITSS (SUMORE)	\$147
Psychology	\$216
Public Administration	\$216
Rehabilitation	\$199
Software Engineering	\$258

Educational specialist program – per credit hour\$145

Doctoral program – per credit hour\$239

Certificate programs – per credit hour

Addiction/Drug Studies	\$173
Applied Sociology	\$199
Health Information	\$199
Rehabilitation	\$199

Audit (undergraduate courses only) – per credit hour\$63

Occasional fees (non-refundable)

Application, undergraduate	\$25
Application, graduate	\$35
Application, transitional students ...	\$25
Late processing fee	\$40
Matriculation, undergraduate and graduate	\$55
Credit by examination	\$55
Validation of field experience – per credit hour	\$55
Removal of incomplete – per credit hour	\$25
Graduation, undergraduate (per degree)	\$55
Graduation, graduate (per degree)	\$55
Certificate fee	\$40
Vocal or instrumental lessons – per credit hour	\$199
International Insurance	\$67

Graduation fees are due at the time of application for graduation, and graduation forms will be released only upon presentation of a receipt. For laboratory fees and other occasional fees, consult the 1989-90 Seattle University Bulletin of Information.

Financial Information

Tuition Adjustments

Adjustments are based on the number of class days, defined as consecutive Mondays through Fridays, beginning the first day of class for each session. The adjustment policy applies to complete withdrawals or reduction in class load. The official date of withdrawal from a course is considered to be the date a student submits the withdrawal or change form to the registrar. An adjustment to a financial aid recipient is applied first to the student's financial aid source(s) and the balance, if any, is remitted to the student. Credit balances created because of tuition adjustments may be remitted to students upon the request of the student.

If the tuition and/or fees have not yet been paid, the portion normally not adjusted is due and payable together with the late fee. Failure to pay the non-adjusted tuition and fees may result in transcript holds and may prevent registration in subsequent quarters.

Withdrawal (full or partial) Full seven- or eight-week session:

First class day through fifth class day	100%
sixth through seventh class day	75%
eighth through 12th class day	60%
13th through 15th class day	40%
Thereafter	No refund

Withdrawal, half session:

First class day	100%
second through fifth class day	70%
sixth through 10th class day	40%
Thereafter	No refund

Withdrawal, shorter sessions:

First class day	100%
Thereafter	No refund

Financial Aid

During summer quarter, loans and work-study employment are available. Students desiring long-term loans must apply for a Stafford Student Loan approximately eight weeks prior to registration to insure the availability of funds when tuition is due on registration day. The Stafford Loan requires an FAF (Financial Aid Form) as well as a separate application. The FAF must be processed by the College Scholarship Service before May 1, 1990. We will receive the FAF six weeks after processing. We may require a separate summer application in addition to the FAF.

Students who have remaining work-study eligibility for the preceding academic year may continue to utilize that eligibility through June 15, 1990. Students who have work-study awards for 1990-91 academic year may be eligible for work-study jobs after July 1, 1990. Students may pick up summer work-study authorization forms in the Financial Aid Office.

The Career Development Center maintains a listing of both on and off-campus jobs. Phone: (206) 296-6080.

For specific information, contact the Financial Aid Office, Seattle University, Seattle, WA 98122. Phone: (206) 296-5840.



Housing

Residential Living

Bellarmine Hall is the designated residence hall for single students enrolled in the 1990 summer session. The hall will open on June 16 at 9:00 a.m. and will close at noon on August 11. Contact the Residential Life Office, (206) 296-6274, for more information and application for summer residence.

Food Service

All resident students must purchase a meal plan. There are three meal plans offered:

Plan A \$420

Plan B \$380

Plan C \$350

Most meals are served in the Marketplace in Bellarmine Hall. Meals begin with dinner on June 17, and end with dinner on August 10. If you have any questions on the meal plans, contact the Food Service Office at (206) 296-6310.

Private Rooms

Private rooms are limited. You may request a single room; however, it cannot be guaranteed until the beginning of the summer session. The cost of a private room is an additional \$168 for the entire session and is pro-rated for shorter stays.

Checkout

Students must check out by noon of the day following their last exam.

Room and Meal Rates (with Meal Plan A)

First Term: June 18-July 13	\$514.00
Second Term: July 16-August 10	\$514.00
Full 7-week Session: June 18-August 3	\$899.50
Full 8-week Session: June 18-August 10	\$1028.00

Parking

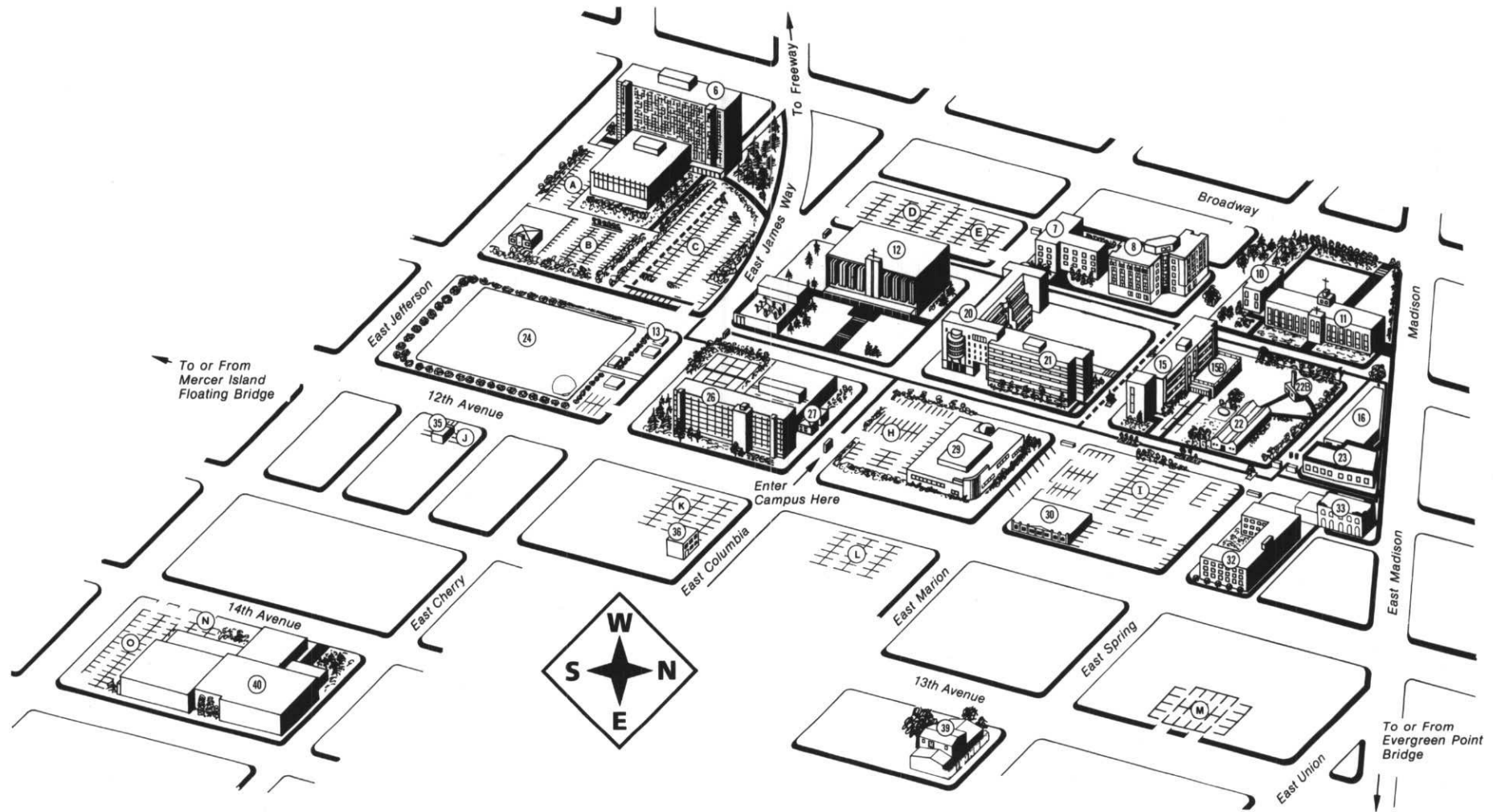
All parking on campus is authorized by the display of a valid Seattle University parking permit. Parking permits may be purchased at the Controller's Office in the University Services Building beginning Friday, June 15, between the hours of 8:00 a.m. and 4:30 p.m. The permits are then issued by the Safety and Security Services Office, which is located in the same building. Parking spaces for the disabled are available in most parking areas. A Seattle University disabled parking permit, as well as a Washington state disabled parking permit, must be displayed when parking in these designated areas. All parking areas are restricted, reserved, or otherwise regulated. Campus maps, parking information, and other security-related information is available at Safety and Security Services at (206) 296-5990.

Equal Opportunity

Seattle University offers the opportunities and experiences of higher education to all students equally without regard to race, religion, age, sex, or national origin. It does so in keeping with the guidelines and requirements of laws and regulations as promulgated by state and federal agencies.



SEATTLE UNIVERSITY CAMPUS



LEGEND

NOTE: Building Numbers on Map Correspond to Signs in Front of Buildings.

- Accessible entrance and elevator
- Accessible entrance to one floor
- Not accessible
- Disabled parking
- Accessible path
- Power operated

CAMPUS BUILDINGS

Administration Building	11
Bannan Building	21
Bellarmino Residence Hall	26
Buhr Hall	22
Campion Tower	6
Campus Services Building	30
Casey Building	8
Child Care Center	39
Connolly Center	40
Connolly Center Parking	N

Engineering Building	20
Faculty/Staff Parking	A, E, G, I, J, N
Garrard Building	10
International Student Center	13
Intramural Field	24
Lemieux Library	12
Loyola Hall	7
Lynn Nursing Building	33
Madison Building	16
McGoldrick Student Center	27

Pigott Building	15
Pigott Auditorium	15B
Sculpture Lab	22B
Seaport Building	36
Student Parking	B, C , D, K, L, M, N
Student Union	23
Twelfth Ave. Building	35
University Services Building	29
Visitor Parking	H
Xavier Residence Hall	32

Classes

Schedule

Seattle University reserves the right to cancel any class without prior notice.

Seven-week classes are scheduled for 70-minute blocks and extend from June 18 to August 3.

Eight-week classes are scheduled for 60-minute blocks and extend from June 18 to August 10.

The first four-week term will extend from June 18 to July 13.

The second 4-week term will extend from July 16 to August 10.

Dates of short courses are listed under course descriptions.

All courses offered after 4 pm are highlighted in the schedule with this color bar.

Building Code

ADM	Administration Building	GA	Garrand Building
BA	Bannan Building	GEL	Gene E. Lynn Building
BU	Buhr Hall	LL	Lemieux Library
CA	Campion Tower	MAD	Madison Building
CC	Connolly Center	NOC	Not on campus
ENGR	Engineering Building	P	Pigott Building

Course/Section	Description/Credit	Instructor
Course Reference	Session/Time	Building/Room

Addiction Studies Short Courses

ADD 400 12190	Symposium on Alcoholism: Focus on Youth (3) June 18-29, Daily, 9:00 a.m.-4:00 p.m.	Roise ADM 220
--------------------------------	---	--------------------------------

History, scope, physiological, social, psychological and family aspects of alcohol problems. Drunk driving. Progression, symptoms, types of alcoholics. Nature of addictive diseases: causality, treatment and prevention. Special emphasis for the 1990 Symposium: Focus on Youth. Also offered under ED 491C and PSY 490.

ADD 422 12204	Alcoholics Anonymous (2) July 2-July 3, Daily, 8:00 a.m.-6:00 p.m.	Schnell ADM 323
--------------------------------	---	----------------------------------

History, structure, traditions and program of A.A. Psychology of the 12 Steps. Use of 12-Step programs as a resource for treatment professionals.

ADD 491A 12854	Advanced Assessment for Addiction Counselors (1) July 12 and July 19, 1:00-6:00 p.m.	Morris ADM 323
---------------------------------	---	---------------------------------

This course is designed to assist chemical dependency counselors in moving beyond the basic diagnostic assessment to a comprehensive assessment useful for coordination with long-term treatment planning. The course will also cover assessment of special problems including depression, suicide risk, cognitive impairment and assessments designed to facilitate special treatment models (such as skills training and relapse prevention), treatment triage, and special issues for cocaine and opiate abusers.

ADD 491A 12210	Learning Disabilities and Addiction Treatment (1) June 21 and June 28, 1:00-6:00 p.m.	Haykin ADM 323
---------------------------------	--	---------------------------------

A substantial number of chemically addicted clients also have learning disabilities that impact their self-esteem, their previous experience with care providers, and their success in chemical dependency treatment. This course will cover: definition of learning disabilities; implications of learning disabilities in chemical dependency treatment. Course will also cover attention deficit disorders (once called "hyperactivity" in children), and the special challenges presented by these clients. Also offered under ED 491A.

Course/Section	Description/Credit	Instructor
Course Reference	Session/Time	Building/Room

ADD 491A 12228	Addiction in the Schools (1) June 18-20, Daily, 9:00 a.m.-3:00 p.m.	Deiro ADM 323
---------------------------------	--	--------------------------------

Addiction problems in young people. Emotional, developmental, and educational problems in young people from alcoholic or other drug-affected families. How educators can become aware of, help, and assist in preventing these problems. Emphasis on middle and high schools. Also offered under ED 491A.

ADD 491B 12232	Developing Capable People: Family Building (2) June 22 and 29, 7:00-10:00 p.m.; June 23 and 30, 8:00 a.m.-5:00 p.m.	Deiro ADM 325
---------------------------------	--	--------------------------------

Prevention of chemical dependency among youth depends in part on strengthening the family unit. This course will provide to counselors, teachers, and others who work with youth, powerful tools for developing young people's self-esteem, interpersonal skills, responsibility, judgment, sense of self-efficacy, and family stability. Based on a system developed by Stephen Glenn and Jane Nelson, authors of Raising Self-Reliant Children in a Self-Indulgent World. Many of these tools would work equally well with adults whose personal and social development has been affected by chemical dependency. Also offered under ED 491B. ENROLLMENT LIMITED TO 12 participants.

Eight-Week Courses

ADD 401 12249	Physiology and Pharmacology of Alcohol Use (2) 8-week, W, 7:00-9:00 p.m.	Scratchley ADM 224
--------------------------------	---	-------------------------------------

Ingestion, absorption, metabolism. Behavioral effects of different blood levels. Damage to brain, liver, other organs. Pre- or Co-requisite: ADD 400.

ADD 405 12255	Alcohol and the Law (2) 8-week, TH, 7:00-9:00 p.m.	Bond ADM 224
--------------------------------	---	-------------------------------

Legal implications and consequences of alcohol-related offenses. Deferred prosecution. Uniform Alcoholism and Intoxication Act. Impaired driving laws. Court structures and jurisdictions. Changes in the laws related to chemical dependency treatment during the past year. This course is particularly timely because these changes have been extensive. Pre-requisite: ADD 400.

ADD 412 12261	Group Dynamics (2) 8-week, M, 4:30-6:50 p.m.	Dickman ADM 326
--------------------------------	---	----------------------------------

Role playing as a means to development of self awareness; dynamics of group interaction. Applications to addiction treatment. Prerequisite: ADD 402.

ADD 414 12276	Case Management and Assessment (2) 8-week, T, 4:30-6:50 p.m.	Roise ADM 326
--------------------------------	---	--------------------------------

Procedures and skills used in alcoholism and other drug addiction referral and treatment agencies. Intake interview, client evaluation, case-writing, pre-sentence report, record-keeping and confidentiality. Prerequisite: ADD 402.

ADD 418 12758	Addiction and the Family (2) 8-week, TH, 4:30-6:50 p.m.	Abbott ADM 220
--------------------------------	--	---------------------------------

Alcohol and other drug-related problems in the family, including the addicted person, spouse, children and significant others. Individual and group counseling. Married couples and team approach as alternatives.

ADD 424 12760	Drug Abuse 1: Social Aspects (2) 8-week, W, 4:30-6:50 p.m.	Morris ADM 222
--------------------------------	---	---------------------------------

Use, abuse, and addiction. Treatment, recovery and rehabilitation methods and strategies.

ADD 425 12771	Drug Abuse 2: Physiological Aspects (2) 8-week, T, 7:00-9:00 p.m.	Scratchley ADM 220
--------------------------------	--	-------------------------------------

Pharmacology and physiology of drug action. Prescription and nonprescription drugs. Interactions among drugs, polydrug abuse. Actions of drugs on the central nervous system. Recovery from addiction. Prerequisite: ADD 401.

Course/Section Course Reference	Description/Credit Session/Time	Instructor Building/Room
------------------------------------	------------------------------------	-----------------------------

ADD 426 **Addiction and Mental Illness (2)** **Morris**
12785 **8-week, M, 7:00-9:00 p.m.** **ADM 222**
Dual diagnosis: When psychiatric disorders coexist with addiction. Psychiatric terminology, clinical symptoms of mental illness; use of DSM-III-R in differential diagnosis; treatment and referral.

ADD 428 **Ethics for Addiction** **Wagner**
12792 **Professionals (2)** **ADM 222**
8-week, M, 4:30-6:50 p.m.
Common problems of counselors and administrators: rights of patients, confidentiality, discrimination, incompetence, fees, personal relationships with patients, inter- and intra-professional relationships. Cooperation with A.A. and other 12-Step groups. Prerequisite: ADD 400.

Business

BUS 230 **Principles of Accounting I** **Staff**
12315 **(Financial) (5)** **P 353**
8-week, TTH, 5:35-7:55 p.m. **Bus Core**
Introduction to financial accounting concepts with emphasis on the development and interpretation of financial statements. Prerequisite: sophomore standing.

BUS 260 **Business Statistics (5)** **Staff**
12321 **8-week, MW, 4:35-6:55 p.m.** **P 351**
Bus Core
Descriptive statistics, summary statistics, statistical sampling, probability distributions, interval estimation, hypothesis testing, Chi-square analysis, analysis of variance, correlation and simple regression analysis. Prerequisite: MT 130 and sophomore standing.

BUS 310 **Computer-based Management** **Staff**
12339 **Information Systems (5)** **P 351**
8-week, TTH, 10:30 a.m.-12:55 p.m. **Bus Core**
Examination of background management elements related to data processing systems. Planning and design of information flows and business systems. Prerequisite: CSC 103 and junior standing.

BUS 340 **Business Finance (5)** **Staff**
12342 **8-week, MW, 7:50-10:15 a.m.** **P 351**
Bus Core
Study of the financial policies and practices of business firms, asset management; capital budgeting; cost of capital; management of funds; financing growth. Prerequisite: EC 271, BUS 231, junior standing.

BUS 350 **Introduction to Marketing (5)** **Staff**
12350 **8-week, TTH, 7:50-10:15 a.m.** **P 351**
Bus Core
Survey of institutions and essential functions of the marketing system; analysis of marketing mix, product, place, price strategies. Prerequisite: junior standing.

BUS 353 **Sales Management (5)** **Cheshier**
13054 **8-week, TTH, 5:35-7:55 p.m.** **P 451**
Deals with the personal selling function and its related administration and managerial activities. The course also covers the sales process, sales management planning, recruiting, training, supervision, and motivation; compensation and evaluation. Prerequisite: BUS 350.

BUS 380 **Organization Behavior (5)** **Staff**
12368 **8-week, MW, 5:35-7:55 p.m.** **P 453**
Bus Core
Develop understanding of organizational behavior with focus on basic processes, methods involved in diagnosing human situations. Prerequisite: Junior standing.

BUS 482 **Business Policy and Organization (5)** **Staff**
12373 **8-week, MW, 4:35-6:55 p.m.** **P 302**
Bus Core
Case studies of policy and administration of business; original work in analysis and policy decisions. Prerequisite: all business core courses and senior standing.

Classes

Course/Section Course Reference	Description/Credit Session/Time	Instructor Building/Room
------------------------------------	------------------------------------	-----------------------------

BUS 491E **Real Estate Law (5)** **Arnesen**
12384 **8-week, MW, 10:30 a.m.- 12:55 p.m.** **P 351**
Course designed for advanced business students who have a solid background in contracts and finance. Purchase and sale agreements, legal descriptions, types of deeds, broker relationships, legal remedies; financing instruments and taxes. Prerequisite: BUS 270.

BUS 496 **Independent Study (1-5)** **Staff**
Arranged **Arr**
Independent study under the supervision of a faculty member. Prerequisite: Permission of instructor and department chair.

BUS 498 **Internship (1-5)** **Konarski**
Arranged **Arr**
Gives students significant experience directly related to their professional goals. Students get opportunity to explore career interests in a real-world setting.

Business Graduate Courses

Interession Courses August 13 to September 10

BMBA 591C **Real Estate Law (3)** **Arnesen**
(BUSA 591C) **August 13-September 10,** **P 351**
12714 **MW, 5:35-8:45 p.m.**
(class does not meet 9/3 Labor Day)

Course is designed to assist graduate students in evaluating and understanding real estate acquisitions. Topics covered include mortgages, deeds of trust, promissory notes, easements, liens, warranty deeds, special warranty deeds, quit claim deeds, encumbrances, taxes, legal descriptions, actions for specific performance, broker responsibilities, leases, community property, joint tenancy, tenancy in common, strategies for investment, negotiation techniques, types of financing and escrow. Prerequisite: BMBA 502.

BMBA 591C **Management for the 1990s (3)** **Stephensen**
(MGMT 591C) **August 14-September 6,** **P 351**
12426 **TTH, 5:35-8:45 p.m.**

The course is designed to meet the challenges an entrepreneur/manager faces in the next decade. Topics covered include the business plan that gets money; entrepreneurial venturing alliances; mergers, acquisitions; management of rapid growth; management of decline; turnaround issues; getting and serving on board of directors and advisory boards for profit and non-profit organizations. Management trends for the year 2000. Local company owners and managers will be guest speakers. The growth of several industries (such as software and pizza) is analyzed as well as specific firms within these industries. Prerequisite: BMBA 580 or permission of instructor.

BMBA 501 **Introductory Business Statistics (3)** **Staff**
(EC 501) **8-week, S, 1:00-4:15 p.m.** **P 351**
12434

Descriptive and summary statistics, probability, statistical sampling and sampling distribution, interval estimation, hypothesis testing on one population, Chi-square analysis, one-way analysis of variance, simple correlation and regression analysis. Prerequisite: Math and computer proficiencies.

BMBA 502 **Legal Environment (3)** **Arnesen**
(BUSA 502) **8-week, M, 5:35-8:45 p.m.** **Bellevue**
12443

Objectives of American legal system: its structure, procedures, and dynamics of courts and regulatory commissions. Relationship of law to social change and preservation of society's values. Emphasis on legal analysis.

Classes

Course/Section Course Reference	Description/Credit Session/Time	Instructor Building/Room
BMBA 503 (ACC 503) 12451	Financial Accounting (3) 8-week, TTH, 5:35-7:05 p.m.	Staff P 351
Concepts and principles underlying accounting with special attention to income determination and measurement of assets and equities. Analysis of business performance from accounting viewpoint.		
BMBA 504 (FIN 504) 12465	Corporate Financial Theory (3) 8-week, MW, 5:35-7:05 p.m.	Staff P 304
Theory and practice of business finance with emphasis on asset valuation, capital structure, cost of capital and capital budgeting. Prerequisite: Math proficiency; BMBA 503.		
BMBA 505 (MKTG 505) 12478	Marketing Processes (3) 8-week, TTH, 5:35-7:05 p.m.	Staff P 304
Introduction to marketing and its functions. Examination of contemporary problems and issues in marketing of goods and services.		
BMBA 506 (BUSA 506) 12953	Production and Operations Management (3) 8-week, MW, 5:35-7:05 p.m.	Staff P 306
Survey of analytical methods for improving the effectiveness of manufacturing and service systems. Topics include facility; location plant layout; inventory control work; design, capacity; planning; scheduling, and quality control. Prerequisite: Math and computer proficiency.		
BMBA 507 (EC 517) 12480	Economic Analysis (3) 8-week, TTH, 7:15-8:45 p.m.	Staff P 304
Functioning of mixed market economy. Determinants of aggregate level of income, employment and prices. Forecasting and policy analysis, international aspects. Prerequisite: Math proficiency.		
BMBA 510 (BUSA 511) 12499	Management Science (3) 8-week, TTH, 5:35-7:05 p.m.	Staff P 405
Techniques of quantitative and statistical analysis such as linear programming, transportation and assignment simulation, queuing theory, game theory, dynamic programming, decision theory, and time series analysis. Prerequisite: BMBA 501, 506.		
BMBA 520 (BUSA 520) 12501	Business Responsibilities/Ethics (3) 8-week, MW, 5:35-7:05 p.m.	Staff P 405
Bases for ethical relationship among agents in a mixed market economy. Responsibilities on both sides of such relationships are examined: employer and employee, firm and customer, competitors and stockholders, dealers and suppliers, unions, local community, and government.		
BMBA 530 (ACC 513) 12516	Managerial Accounting (3) 8-week, MW, 7:15-8:45 p.m.	Tinius P 401
An examination of the basic issues of managerial accounting: product costing and information for planning and control decisions through problem solving, case analysis, lecture, and class discussion. Prerequisite: BMBA 503.		
BMBA 540 (FIN 514) 12527	Managerial Finance (3) 8-week, T, 7:15-10:30 p.m.	Dibee P 306
Cases in business finance that develop students' skills for identifying problems, acquiring relevant material and using appropriate financial theory for making decisions in simulated business settings. Prerequisite: BMBA 504.		

Course/Section Course Reference	Description/Credit Session/Time	Instructor Building/Room
BMBA 542 (FIN 542) 12538	Investments (3) 8-week, M, 7:15-10:30 p.m.	Dibee P 306
Principles and practices of investments, security analysis and valuation, portfolio management, and other elements of the investment process. Prerequisite: BMBA 540.		
BMBA 550 (MKTG 515) 12540	Marketing Management (3) 8-week, S, 9:15 a.m.-12:30 p.m.	Staff P 306
Basic marketing management activities of planning, implementing, and controlling product, price, distribution, and promotion decisions. Application of the marketing mix and evaluation of the firm's marketing efforts. Prerequisite: BMBA 504.		
BMBA 560 (BUSA 500) 12552	Management Information Systems (3) 8-week, S, 9:15 a.m.-12:30 p.m.	Staff P 351
Introductory survey course in information systems. Includes systems concepts, transaction processing, MIS, decision support systems; data base management, data communications and LANs, system analysis and design, acquisition and contracting, security, and ethical issues. Prerequisite: Computer proficiency.		
BMBA 562 (BUSA 565) 12569	Advanced Topics: Just-in-Time and Quality Control Manufacturing (3) 8-week, T, 5:35-8:45 p.m.	Modarress Bellevue
Fundamental and comprehensive coverage of quality control principles and procedures pertinent to the quality of output in manufacturing, and research on quality problems. Just-in-time inventory control. Prerequisite: BMBA 506, 510.		
BMBA 566 (EC 566) 12583	Forecasting Business Conditions (3) 8-week, MW, 7:15-8:45 p.m.	Rivers P 405
Focus is on techniques of forecasting appropriate at the firm and industry levels. Judgmental projections and model building are emphasized. Prerequisite: BMBA 507, 510.		
BMBA 570 (EC 527) 12595	Managerial Economics (3) 8-week, TH, 5:35-8:45 p.m.	Staff Bellevue
Theory of the consumer, the firm and the industry, with emphasis on applications to business decision-making. Prerequisite: BMBA 507.		
BMBA 583 (IB 519) 12611	International Business Enterprise (3) 8-week, TTH, 7:15-8:45 p.m.	Staff P 354
Managing international business. Topics such as the international financial environment and exchange rate risk, international trade theories and institutions, and government trade policies. Foreign marketing strategies and accounting, legal, and labor practices. Prerequisite: BMBA 507.		
BMBA 584 (MGT 584) 12935	Labor Relations and Collective Bargaining (3) 4-week, T, 7:15-10:30 p.m. and Saturdays, 10:00 a.m.-4:00 p.m. June 30, July 7 and 14	Mandelbaum P 302
Historical development of labor management relations and current legal and regulatory systems, including collective bargaining, and future prospects. Emphasis on developing skills in labor relations. Prerequisite: BMBA 508.		
BMBA 585 (MGMT 585) 12625	Management of Change (3) 8-week, MW, 5:35-7:05 p.m.	Staff P 354
Process of change in organizations, its impact on the individuals and organizations. Problems of technology and culture, managerial philosophy, life styles, and attitudes toward work. Prerequisite: BMBA 580.		
BMBA 586 (MGMT 586) 12633	Entrepreneurship and Business (3) 8-week, M, 7:15-10:30 p.m.	Stephenson P 302
Procedures and problems in starting and operating a successful small business enterprise. Prerequisite: All business core.		

Course/Section Course Reference	Description/Credit Session/Time	Instructor Building/Room
------------------------------------	------------------------------------	-----------------------------

BMBA 591C (MGMT 591C) 12941	American Manufacturing Management in the 1990s (3) 8-week, TW, 7:15-10:30 p.m.	Culbertson P354
--	---	----------------------------------

American companies' internal management practices must change to re-establish international competitiveness in manufacturing. Seminar participants will examine the Whys and Hows. Prerequisite: BMBA 580.

BMBA 591C (BUSA 591C) 12644	International Law (3) 8-week, W, 5:35-8:45 p.m. (class will meet 7/6 instead of 7/4)	Arnesen Bellevue
--	---	-----------------------------------

Course includes a study of various problems doing business in foreign countries. Emphasis will include study of problems/issues of operating in Canada and Pacific Rim countries, as well as problems/issues of foreign businesses operating in the U.S. Prerequisite: BMBA 502.

BMBA 591C (EC 591C) 12657	Competitiveness and Industrial Policy (3) 8-week, S, 1:00-4:15 p.m.	Sawyer P 304
--	--	-------------------------------

International competitiveness challenge to American business. The role played by government in other industrialized economies, including Japan. The prescription - indicative economic planning - acknowledges the untenability of the market to make choices about society's future.

BMBA 591C (MGMT 508) 12666	Principles of Management (3) 8-week, MW, 7:15-8:45 p.m. (fulfills new Foundation requirement)	Staff P 304
---	--	------------------------------

Introductory survey of principles of management, organizational theory and organizational behavior. Basic concepts and tools to solving organizational problems.

BMBA 595 (MGMT 590) 12679	Business Policy (3) 8-week, W, 7:15-10:30 p.m. (class will meet 7/6 instead of 7/4)	Fleenor P 306
--	--	--------------------------------

Policy problems faced by chief administrative officers. Determination of objectives, development of policies to achieve objectives. Organization of executive personnel to implement policies, coordination of the organization, and adjustments to changes in environment. Case study seminars. Prerequisite: all management core classes.

BMBA 596	Independent Study (1-3) Arranged	Staff Arr
-----------------	---	----------------------------

Prerequisite: Permission of instructor and department chair.

BMBA 598	Internship (1-3) Arranged	Konarski Arr
-----------------	--	-------------------------------

Gives students opportunities to explore their career interests in business settings. Prerequisite: Permission of instructor.

BMBA 599 12709	MBA Research Paper (3) Arranged	Staff Arr
---------------------------------	--	----------------------------

Final requirement for those MBA students choosing the MBA research paper option. Prerequisite: Permission instructor.

Communication

COMC 230 10088	Public Speaking (5) 7-week, MWF, 10:30 a.m.-12:30 p.m.	Wildeson MAD 107
---------------------------------	---	-----------------------------------

Theory and practice of constructing, presenting, and analyzing speeches. Emphasis on audience adaptation and the development of critical listening skills. Performance-oriented course.

COMC 260 10097	Interpersonal Communication (5) 7-week, MWF, 1:00-3:00 p.m.	James MAD 101
---------------------------------	--	--------------------------------

Interpersonal communication theory and its application between two or more people. Development of skills, knowledge and understanding of interpersonal communication effectiveness.

COMJ 210 10101	Media Writing I (5) 7-week, MWF, 1:00-3:00 p.m.	McCoy ENGR 310
---------------------------------	--	---------------------------------

Theory and practice of basic news writing with strong emphasis on writing in class. Focus on accuracy and precision in written communication. Aims to improve discipline in writing, attempt at objectivity and fact gathering.

Classes

Course/Section Course Reference	Description/Credit Session/Time	Instructor Building/Room
------------------------------------	------------------------------------	-----------------------------

Computer Science

CSC 103 10780	Introduction to Computers and Applications (5) 7-week, Daily, 9:10-10:20 a.m.	Mills ENGR 311
--------------------------------	--	---------------------------------

An overview of computers and their applications to information processing. Word processing, spreadsheets, database systems, and elementary concepts of computer programming. No prior experience with computers assumed or required.

CSC 103 10799	Introduction to Computers and Applications (5) 7-week, Daily, 10:30-11:40 a.m.	Staff ENGR 311
--------------------------------	---	---------------------------------

See description above.

CSC 103 10800	Introduction to Computers and Applications (5) 8-week, TTH 5:30-8:00 p.m.	Mills ENGR 311
--------------------------------	--	---------------------------------

See description above.

CSC 230 10825	FORTTRAN for Engineers (3) 8-week, MTTH, 10:30-11:30 a.m.	Gehlen ENGR 312
--------------------------------	--	----------------------------------

FORTTRAN language including flowcharting, debugging, input/output, loops, arrays, and subprograms. Introduction to numerical techniques. Laboratory programming assignments will be drawn primarily from the fields of engineering. Prerequisite: ME 215 or 230, MT 232 and 233.

CSC 310 10811	Data Structures and Analysis of Algorithms (5) 8-week, Daily, 9:20-10:20 a.m.	Vanmane ENGR 312
--------------------------------	--	-----------------------------------

Concepts of data structures and analysis of their utilization in algorithm design. Graphs and applications of graphs, memory management, algorithm and system design, and analysis. Prerequisite: CSC 250, MT 222.

CSC 491E 10833	Application Programming with the Macintosh Toolbox (5) 8-week, T, 5:30-8:30 p.m. TH, 5:30-7:30 p.m.	Staff ENGR 312
---------------------------------	--	---------------------------------

This course will reveal the inner workings of the Macintosh and will provide experience in constructing application programs on the Mac. Topics will include calling the Event Manager, using Quickdraw, creating and manipulating windows, menu management, etc.

Criminal Justice

CJ 110 12124	Introduction to Criminal Justice (5) 8-week, TTH, 7:00-9:00 p.m.	Paradis ADM 202
-------------------------------	---	----------------------------------

A survey of criminal justice processes from arrest through release, the relationships of police, prosecutor, defense, the courts and prison, as each integrates into a system. Required course for majors.

CJ 218 12131	Criminal Justice Research Methods (5) 7-week, Daily, 9:10-10:20 a.m.	Kelliher ADM 321
-------------------------------	---	-----------------------------------

A review of statistical procedures and an introduction to the use of the computer in research. Introductory students will acquire knowledge of the basics of criminal justice research, as well as learn how to evaluate and think critically about the techniques of data collection, analysis and presentation. Required course for majors.

CJ 458 12145	Field Experience I (5) Arranged	Kastama Arr
-------------------------------	--	------------------------------

Direct observation, supervised practical experience, and academic study in a selected law enforcement agency or organization in the criminal justice system. Prerequisite: Senior standing and permission of chair.

CJ 459 12159	Field Experience II (5) Arranged	Kastama Arr
-------------------------------	---	------------------------------

See description above.

Classes

Course/Section Course Reference	Description/Credit Session/Time	Instructor Building/Room
------------------------------------	------------------------------------	-----------------------------

CJ 496	Independent Study (1-5) Arranged	Kelliher Arr
In-depth topics. Prerequisite: Senior standing and permission of chair.		
CJ 497	Independent Study (1-5) Arranged	Kelliher Arr
Research. Prerequisite: Senior standing and permission of chair.		
CJ 498	Independent Study (1-5) Arranged	Kelliher Arr
Directed reading. Prerequisite: Senior standing and permission of chair.		

Diagnostic Ultrasound

US 473 10647	Clinical Orientation to Ultrasound (10) Arranged	Mentors NOC
Clinical ultrasound internship. Co-requisite: US 483.		
US 474 10654	Clinical Experience in Ultrasound (8) Arranged	Mentors NOC
Clinical ultrasound internship. Co-requisite: US 483.		
US 483 10663	Ultrasound Seminar (2) 8-week, Arranged	Staff NOC
Clinical ultrasound internship. Co-requisite: US 473 or 474.		
US 484 10672	Basic Science of Ultrasound (2) Arranged	Staff NOC
Clinical ultrasound internship. Co-requisite: US 473 or 474.		

Economics

EC 271 12293	Principles of Economics - Macro (5) 8-week, MW, 5:35-7:55 p.m.	Snow P 353 Core Option Bus Core
Organization, operation, and control of the U.S. economy in its historical and socio-political setting. Problems of inflation, unemployment, taxation, the public debt, money and banking, growth. Prerequisite: Sophomore standing.		
EC 496	Independent Study (1-5) Arranged	Staff Arr

Education

One-Week Courses (meet daily)

ED 491A 12863	Learning Disabilities and Addiction Treatment (1) June 21 and June 28, 1:00-6:00 p.m.	Haykin ADM 323
For description see ADD 491A.		
ED 491A 12889	Addiction in the Schools (1) June 18-20, Daily, 9:00 a.m.-3:00 p.m.	Deiro ADM 323
For description see ADD 491A CRN 12228.		

Course/Section Course Reference	Description/Credit Session/Time	Instructor Building/Room
------------------------------------	------------------------------------	-----------------------------

ED 491B 12919	Developing Capable People: Family Building (2) June 22, 7:00-10:00 P.M. June 23 and 30, 8:00 a.m.-5:00 p.m.	Deiro ADM 325
--------------------------	--	--------------------------

Prevention of chemical dependency among youth depends in part in strengthening the family unit. This course will provide to counselors, teachers and other who work with youth powerful tools for developing young people's self-esteem, interpersonal skills, responsibility, judgment, sense of self-efficacy, and family stability. Based on a system developed by Stephen Glenn and Jane Nelson, authors of *Raising Self-Reliant Children in a Self-Indulgent World*. Also offered under ADD 491B.

ED 491C 10994	Instructional Theory into Practice (ITIP) (3) June 11-15, 8:00 a.m.-3:00 p.m.	Perri P 401
--------------------------	--	------------------------

The elements of successful teaching, distilled from the literature in human learning and from observation of master teachers by Madeline Hunter and her colleagues at UCLA. (Reduced tuition \$165.)

ED 491C 12970	Instructional Theory into Practice (ITIP) (3) August 13-17, 8:00 a.m.-3:00 p.m.	Perri P 452
--------------------------	--	------------------------

See description above.

Two-Week Courses (meet daily)

ED 450 10310	Introduction to Gifted Education (3) June 18-29, 1:10-3:40 p.m.	Bronson/ Langdon P 401
-------------------------	--	---------------------------------------

An introduction to gifted education, including definition and identification of areas of giftedness, curriculum modes, program organization, awareness of and attitudes toward giftedness, and evaluation of student performance. Language arts, humanities and the arts will be considered.

ED 452 11014	Gifted Education: Science (3) July 16-27, 7:50-10:20 a.m.	Staff P 352
-------------------------	--	------------------------

Rationale for and methods of science instruction for gifted students. Emphasis will be placed on the implications of Piaget in cognitive development for curriculum design.

ED 491C 12746	Symposium on Alcoholism: Focus on Youth (3) June 18-29, Daily, 9:00 a.m.-4:00 p.m.	Roise ADM 220
--------------------------	---	--------------------------

History, scope, physiological, social, psychological, and family aspects of alcohol problems. Drunk driving. Progression, symptoms, types of alcoholics. Nature of addictive diseases: causality, treatment, and prevention. Special emphasis for the 1990 Symposium: Focus on Youth. Also offered under PSY 490 and ADD 400.

ED 491C 11023	Curriculum Design for Gifted (3) July 30-August 10, 1:10-3:40 p.m.	Simms P 352
--------------------------	---	------------------------

How to develop and teach lessons incorporating a variety of curriculum and learning models appropriate for bright students. Included will be classroom observations.

ED 491C 11037	Introduction to Theology for Catholic School Personnel (3) June 18-29, 9:00 a.m.-12:00 p.m.	Burdett P 352
--------------------------	--	--------------------------

This session will explore the basic themes of our Catholic faith as outlined in the National Catechetical Directory. This survey will be done from theological and spiritual perspectives.

ED 491C 11046	Introduction to Theology for Catholic School Personnel (3) July 30-August 10, 9:00 a.m.-12:00 p.m.	Burdett P 352
--------------------------	---	--------------------------

See description above.

ED 491C 11058	Teaching Science in the Elementary School (3) June 18-29, 1:10-4:00 p.m.	Wild P 352
--------------------------	---	-----------------------

Utilizing an inquiry-oriented method of teaching, this course will emphasize the development of basic concepts of biology, physics, and astronomy. (Reduced tuition \$165.)

Course/Section Course Reference	Description/Credit Session/Time	Instructor Building/Room
------------------------------------	------------------------------------	-----------------------------

ED 591C American Labor Relations (3) Mandelbaum
11009 June 25 & July 5, 9:00 a.m.-12:00 p.m. P 401

The course provides an historical, legal and operational overview of labor-management relations, emphasizing (1) conditions which lead to unions; (2) organizational issues; (3) collective bargaining systems; and (4) contract administration, including arbitration; and (5) the future of unionism. Special practica are designed to help junior and senior high school faculty develop appropriate curriculum for courses in history, social science, and social ethics.

ED 591C Special Education Administration (3) Staff
11060 June 18-29, 1:10-3:40 p.m. P 455

Focuses on the aspects of special-education classrooms and programs that differ from regular education. Provides a knowledge-base of difference along with practical approaches for development, maintenance, and evaluation of special education programs within the school.

ED 591C Teaching Critical Thinking (3) Zarter
11071 July 16-27, 1:10-3:40 p.m. P 352

Appropriate for teachers in the K-12 setting, this course will examine theory and research in critical and creative thinking, explore applications for the various grade levels and disciplines, and demonstrate specific strategies from such programs as Marzano's TACTICS for Thinking and deBono's CoRT thinking program.

EDCI 533 Gifted Education: Methods for Bronson/
12847 Exceptionality (3) Langdon
July 2-13, 1:10-3:40 p.m. P 455

Teaching strategies for teachers of gifted education. Prerequisite: ED 450 and EDCI 554.

First Four-Week Term: June 18-July 13

ED 424 Introduction to Learning Denoon
11085 Disabilities (3) P 452
First, Daily 7:50-9:00 a.m.

History and current practices in diagnosis and remediation of students who are learning-disabled and mildly handicapped.

ED 460 Computers and Instructional Mrosia
11092 Technology in the Classroom (3) P 353
First, Daily, 11:50 a.m.-1:00 p.m.

An examination of the uses of computers and forms of media in the classroom.

ED 491C Early Childhood: Special Staff
11325 Education (3) P 401
First, Daily, 9:10-10:20 a.m.

ED 500 Introduction to Graduate Research (3) Zarter
11106 First, Daily, 7:30-8:40 a.m. P 352

Introduction to research skills and literature in students' fields. Includes an orientation to graduate studies. Ordinarily taken as first graduate course.

ED 501 Philosophy of Education (3) Zarter
11119 First, Daily, 9:10-10:20 a.m. P 353

Philosophical foundations of education and related fields.

ED 515 Multicultures (3) Simmons
11122 First, Daily, 9:10-10:20 a.m. P 452

Examination of a wide variety of cultures with implications for helping professions.

ED 523 Adolescent Psychology/Learning (3) Grieneeks
11135 First, MW, 2nd and 4th F, P 452
11:50 a.m.-2:20 p.m.

Investigation studies in adolescent psychology and learning.

EDAD 578 Principles of Educational Law (3) Hutton
11141 First, MW, 2nd and 4th F, P 451
7:50-10:20 a.m.

Introduction to American legal system and principles affecting education. Emphasis on constitutional, statutory, regulatory, and case procedures applicable nationally to all levels of education.

Classes

Course/Section Course Reference	Description/Credit Session/Time	Instructor Building/Room
------------------------------------	------------------------------------	-----------------------------

EDAD 586 Professional Personnel (3) Hutton
11153 First, TTH, 1st and 3rd F, P 451
11:50 a.m.-2:20 p.m.

Selection, assignment, evaluation, competency maintenance; positive personnel climate, rights, responsibilities, grievances, and bargaining procedures.

EDAD 587 Community Relations (3) Reul
11164 First, Daily, 10:30-11:40 a.m. P 353

Purposes and media for informing the general public and patrons about programs and needs; roles of professional personnel and administrators.

EDCI 513 Supervision of Instruction (3) Mrosia
12820 First, TTH, 1st and 3rd F, P 451
7:50-10:20 a.m.

Improvement of instruction through supervisory leadership.

EDCI 525 Seminar in Teaching of Reading (3) Schlick-Noe
11170 First, Daily, 10:30-11:40 a.m. P 451

Development of reading skills at all levels; examination and evaluation of current reading practices, research and materials. Prerequisite: ED 336 or 337 or equivalent.

EDCI 527 Corrective Techniques in the Davis
11188 Teaching of Reading (3) P 455
First, Daily, 9:10-10:20 a.m.

Identification of components of effective corrective reading programs; description and application of specific methods and materials; evaluation and design of corrective reading approaches. Prerequisite: EDCI 524 or 554.

EDCI 528 Reading Practicum Workshop (3) Schlick-Noe
12836 TBA Arr

Emphasis on task analysis lesson design using ECRI instructions for word recognition and comprehension skills; recording and reporting student learning increments, and study of role and application of materials.

EDCI 529 Field Practicum in Reading (6) Staff
11197 TBA Arr

Supervised field experience in diagnosis and teaching of reading. Prerequisite: EDCI 524, 525, or permission of instructor.

EDCI 543 Seminar in Behavior Disorders (3) P 452
11243 First, Daily, 10:30-11:40 a.m. Denoon

Overview of practices and rationales in the education of the behavior disordered and/or emotionally disturbed child. Structuring of individualized remedial programs and techniques which utilize existing agencies and personnel.

EDCN 509 Counselor Preparation (3) Ingram
11251 Developmental School Counseling P 452
First, TTH, 1:10-4:10 p.m.

Emphasizes expanded role of the school counselor as psychological educator, consultant, and systems change-agent. Studies models of these functions and promotes application to student's school setting.

EDRB 515 Loss and Grief (3) Haney
11265 First, MTH, 5:00-8:00 p.m. P 352

Loss and grieving process as they relate to illness, injury, disability and dying.

EDDR 604 Workshop in Organizational Morford/
11278 Development and Change (3) Willing
First, MWF, 1:30-4:30 p.m. P 321

Integrated workshop relating to organizational development, conflict management. Permission of instructor.

Classes

Course/Section Course Reference	Description/Credit Session/Time	Instructor Building/Room
------------------------------------	------------------------------------	-----------------------------

Second Four-Week Term: July 16-August 10

ED 411 11280	Early Education and Child Development (3) Second, Daily 9:10-10:20 a.m.	Chattin-McNichols P 353
-----------------	--	----------------------------

Current issues and trends in early childhood education - birth through eight years. Emphasis on recent research including that carried out by teachers in their own classrooms.

ED 423 11299	Introduction to Classroom Management (3) Second, Daily, 11:50 a.m.-1:00 p.m.	Hilton P 353
-----------------	---	-----------------

Provides theory and strategies for managing the K-12 classroom. While a variety of theories will be studied, the systematic use of applied behavior analysis techniques will be a major emphasis of the course.

ED 428 11300	Language Development (3) Second, Daily, 10:30-11:40 a.m.	Staff P 353
-----------------	---	----------------

An introduction to critical features of the developmental processes of receptive and expressive language with consideration of diagnosis, curriculum and method.

ED 432 11311	Mainstreaming the Exceptional Student (3) Second, Daily, 9:10-10:20 a.m.	Hilton P 302
-----------------	---	-----------------

Issues surrounding mainstreaming; methods for working with exceptional students in the regular classroom.

ED 500 11333	Introduction to Graduate Research (3) Second, Daily, 7:50-9:00 a.m.	Chattin-McNichols P 353
-----------------	--	----------------------------

Introduction to research skills and literature in students' fields. Includes an orientation to graduate studies. Ordinarily taken as first graduate course.

ED 521 11344	Adult Psychology/Learning (3) Second, TTHF, 11:50 a.m.-2:20 p.m.	Crow P 551
-----------------	---	---------------

Investigation of various theories of adult development and learning.

ED 522 11357	Child Psychology/Learning (3) Second, Daily, 10:30-11:40 a.m.	Guest P 455
-----------------	--	----------------

Investigation of various theories of child development and learning.

ED 591C 11366	The American Community College (3) Second, MW, 5:00-8:00 p.m.	Hungar P 451
------------------	--	-----------------

History, role, present status and future directions of the American Community College.

EDAD 572 11379	The Principalship (3) Second, Daily, 10:30-11:40 a.m.	Barker P 452
-------------------	--	-----------------

Leadership of faculty, student, and community groups to meet school goals; development of school culture, and management of building functions and resources. Prerequisite: School of Education and Administration Core course-work.

EDAD 574 11382	School Plant and Facilities Planning (3) Second, Daily, 11:50 a.m.-1:00 p.m.	Staff P 451
-------------------	---	----------------

School plant requirements for new construction and remodeling: Projections, site selection; staff and patron planning; and leadership of the administrator.

EDAD 589 12992	Washington School Law and Finance (3) Second, Daily, 7:50-9:00 a.m.	Howard P 452
-------------------	--	-----------------

School laws of Washington based on its constitution, statutes, administrative code and court precedents; includes legal requirements of school finance for budgeting, accounting and auditing. Emphasis on applicability to K-12 system. Prerequisite: EDAD 578.

Course/Section Course Reference	Description/Credit Session/Time	Instructor Building/Room
------------------------------------	------------------------------------	-----------------------------

EDCI 510 11404	Basics of Curriculum and Instruction (3) Second, MW, 2nd and 4th F, 11:50 a.m.-3:00 p.m.	Weaver P 401
-------------------	--	-----------------

Study of the foundations of curriculum and instructional development. Investigation and analysis of selected current issues, innovations and trends, with an emphasis on their bases.

EDCI 512 11410	Seminar: Instructional Effectiveness (3) Second, Daily, 9:10-10:20 a.m.	Barker P 452
-------------------	--	-----------------

Survey of current research on teacher behaviors, instructional patterns, classroom conditions, and school characteristics associated with student learning. Review of teaching and learning styles with an emphasis on value-based instruction.

EDCI 526 11428	Reading in Content Fields (3) Second, Daily, 7:50-9:00 a.m.	Staff P 455
-------------------	--	----------------

Decoding and vocabulary analysis, comprehension, reading rate, study skills, and reading interests as related to specific content fields. Prerequisite: ED 336 or 337 or equivalent, or permission of instructor.

EDDR 600 11432	Workshop in Educational Leadership (9) Second, Daily, 9:00 a.m.-4:30 p.m.	Morford/ Willing Stimson Room
-------------------	--	--

An integrated four-week workshop in educational leadership. Includes theoretical and practical study of leadership in educational institutions. Required first course in the Ed.D program.

Eight-Week Term: June 18-August 10

EDAD 564 11449	Administrative Internship I (3) 8-week, Arranged	Barker Arr
-------------------	---	---------------

EDAD 565 11455	Administrative Internship II (3) 8-week, Arranged	Barker Arr
-------------------	--	---------------

EDAD 566 11461	Administrative Internship III (3) 8-week, Arranged	Barker Arr
-------------------	---	---------------

EDAD 595 11476	Administrative Graduate Project (3) 8-week, Arranged	Barker Arr
-------------------	---	---------------

Scholarly graduate project designed to improve some aspect of professional assignment. Prerequisite: Graduate core requirements and approval of coordinator.

EDAD 596	Administrative Independent Study (1-3) 8-week, Arranged	Barker Arr
----------	--	---------------

Intensive library research. Approximately 30 hours of reading and allied assignments for each credit. Completion reports will include analysis and critical appraisal of materials read. Prerequisite: Permission of adviser. Request course number from Registrar's Office at time of registration.

EDAD 597	Administrative Independent Study (1-3) 8-week, Arranged	Barker Arr
----------	--	---------------

See description above. Request course number from Registrar's Office at time of registration.

EDAD 598	Administrative Independent Study (1-3) 8-week, Arranged	Barker Arr
----------	--	---------------

See description above. Request course number from Registrar's Office at time of registration.

EDCI 549	Practicum: Special Education (3-6) 8-week, Arranged	Hilton Arr
----------	--	---------------

Diagnostic and prescriptive teaching with children who have learning or behavior problems. Laboratory course. Prerequisite: Permission of instructor. Request course number from Registrar's Office at time of registration. Request course number from Registrar's Office at time of registration.

Course/Section Course Reference	Description/Credit Session/Time	Instructor Building/Room
------------------------------------	------------------------------------	-----------------------------

EDCI 554 **Diagnosis and Prescription (3)** **Coady**
11520 **8-week, MW, 1:10-3:10 p.m.** **P 456**

Comparison of various methods used in the diagnosis of learning problems. Selection, administration, and analysis of tests; writing educational prescriptions to deal with those problems. Prerequisite: ED 424.

EDCI 595 **Curriculum Graduate Project (3)** **Staff**
11536 **8-week, Arranged** **Arr**

Scholarly graduate project designed to improve some aspect of education. Prerequisite: Graduate core requirements and approval of adviser.

EDCI 598 **Curriculum Independent Study (1-4)** **Staff**
8-week, Arranged **Arr**

Library research in curriculum. Approximately 30 hours of reading and allied assignments per credit. Reports will include analysis and critical appraisal of materials read. Prerequisite: Permission of adviser. Request course number from Registrar's Office at time of registration.

EDCN 510 **Fundamental Counseling Skills (3)** **Staff**
12997 **8-week, MW, 9:10-11:10 a.m.** **P 551**

Focus on basic counseling skills training and counseling ethics through intensive small group practice. Designed to complement EDCN 511, Counseling Theories, though they need not be taken concurrently.

EDCN 512 **Career Counseling and** **Crow**
11554 **Informational Sources (3)** **P 452**
8-week, T, 7:00-10:00 p.m.

Study of vocational development. Exploration of educational, social, vocational, and referral sources. Prerequisite: EDCN 511. (Plus six additional hours to be negotiated.)

EDCN 517 **Group Counseling/Theories** **Afanador**
11563 **and Practice (3)** **P 452**
8-week, W, 4:20-6:40 p.m. **P 455**
Lab, W, 7:00-9:00 p.m.

Emphasizes group counseling theory. Provides group experiences in a two-hour weekly laboratory (including required 10-hour marathon) to integrate theory and practice. Discusses possible applications. Prerequisite: EDCN 510 and 511.

EDCN 552 **Individual Counseling** **Staff**
11572 **Practicum I (3)** **P 452**
8-week, M, 4:20-7:20 p.m.

Supervised counseling experience with off-campus clients. Prerequisite: EDCN 551.

EDCN 558 **Community Mental Health (3)** **Johnson**
11589 **8-week, TH, 4:20-7:20 p.m.** **P 452**

An examination of organization, clientele, and functions of community mental health agencies. Focus on clinical assessment, case conceptualization and management.

EDCN 564 **Counseling Internship I (4)** **Grieneeks**
11591 **8-week, M, 4:20-7:20 p.m.** **P 455**

Supervised experiences in a school or agency. Taken in final three quarters of graduate program with permission and application made two quarters earlier. On-campus seminar required first and second quarters. Permission of instructor.

EDCN 565 **Counseling Internship II (4)** **Haney**
12988 **8-week, M, 4:20-7:20 p.m.** **P 456**

Permission of instructor.

EDCN 566 **Counseling Internship III (3)** **Afanador**
13005 **8-week, M, 4:20-7:20 p.m.** **P 551**

Permission of instructor.

EDCN 591C **Spirituality and the Counselor (3)** **O'Connor**
11607 **8-week, T, 4:20-7:00 p.m.** **P 551**

An investigation of the spiritual dimension of the counselor and of counseling through readings and experimental activities. Prerequisite: EDCN 510, 511.

EDCN 595 **Counseling Graduate Project (3-6)** **Staff**
8-week, Arranged **Arr**

Classes

Course/Section Course Reference	Description/Credit Session/Time	Instructor Building/Room
------------------------------------	------------------------------------	-----------------------------

EDCN 596 **Counseling Independent Study (1-3)** **Staff**
8-week, Arranged **Arr**

EDDR 605 **Independent Study in** **Staff**
Independent Study in **Arr**
Educational Leadership (1-5)
8-week, Arranged

Permission of instructor.

EDDR 606 **Independent Study in** **Staff**
Independent Study in **Arr**
Educational Leadership (1-5)
8-week, Arranged

Permission of instructor.

EDDR 607 **Independent Study in** **Staff**
Independent Study in **Arr**
Educational Leadership (1-5)
8-week, Arranged

Permission of instructor.

EDDR 608 **Internship in Educational** **Staff**
Leadership (1-9) **Arr**
8-week, Arranged

Permission of instructor.

EDDR 609C **Superintendent Internship (3)** **Staff**
13020 **8-week, Arranged** **Arr**

Permission of instructor.

EDDR 610 **Doctoral Project in Educational** **Morford**
11684 **Leadership (1-14)** **Arr**
8-week, Arranged

EDDR 610C **Doctoral Project (3)** **Morford**
13036 **8-week, Arranged** **Arr**

EDDR 610E **Doctoral Project (5)** **Morford**
13047 **8-week, Arranged** **Arr**

EDDR 613 **Project Continuation (0)** **Morford**
11712 **8-week, Arranged** **Arr**

EDDR 649 **Doctoral Enrollment (0)** **Morford**
11729 **Arranged** **Arr**

EDRB 210 **Field Experience (5)** **Staff**
11730 **8-week, Arranged** **Arr**

Actual experience in an agency or institution setting with a rehabilitation framework. Coordinating seminars are an integral part of each field experience course. Prerequisite: RHB 100 and 201, or permission of instructor. Mandatory C/NC.

EDRB 310 **Field Experience (5)** **Staff**
11748 **8-week, Arranged** **Arr**

See description above. Mandatory C/NC.

EDRB 410 **Field Experience (5)** **Staff**
11756 **8-week, Arranged** **Arr**

See description above. Mandatory C/NC.

Classes

Course/Section Course Reference	Description/Credit Session/Time	Instructor Building/Room
------------------------------------	------------------------------------	-----------------------------

Engineering

Civil Engineering

CE 402 10284	Engineering Economy (3) 8-week, MTTH, 9:20-10:20 a.m.	Majors ENGR 305
-----------------	--	--------------------

Elements of immediate and long-term economy of facility design, construction, and maintenance; interest rates, present worth and prospective return on investment, depreciation and replacement studies. Prerequisite: Senior standing.

Mechanical Engineering

ME 350 10930	Materials Science (5) 8-week, Daily, 9:20-10:20 a.m.	Gehlen ENGR 304
-----------------	---	--------------------

Atomic structure. Metallic bond. Structure of metals and non-metals. Equilibrium diagrams. Time-dependent transformations. Relation of structure to properties. Elastic and plastic deformation. Prerequisite: CE 221, 222.

Software Engineering

SE 591C 10844	Macintosh Application Programming Using Software Engineering Principles (3) 8-week, T, 5:30-8:30 p.m.	Staff ENGR 305
------------------	--	-------------------

This course will reveal the inner workings of the Macintosh and will provide valuable experience for students starting projects based on the Macintosh or other window-oriented systems. Event Manager, Quickdraw, windows, menus, etc.

English

EN 110 10332	Freshman English (5) 7-week, Daily 7:50-9:00 a.m.	Tadie ADM 203 Core
-----------------	--	--------------------------

Focuses on reading and writing as creative, interpretive and argumentative acts. Seeks to develop the rhetorical skills of invention, arrangement, style and correctness, needed for college success.

EN 120 10349	Masterpieces of Literature (5) 7-week, Daily, 9:10-10:20 a.m.	Tadie ADM 203 Core
-----------------	--	--------------------------

A study of narrative, drama and poetry. The student will learn to appreciate how these literary forms embody metaphoric, poetic and mythic ways of knowing; through writing assignments, the student will also learn how to respond to literature.

EN 120 10355	Masterpieces of Literature (5) 7-week, Daily, 10:30-11:40 a.m.	Douglas ADM 203 Core
-----------------	---	----------------------------

See description above.

EN 120 10414	Masterpieces of Literature (5) 7-week, MWTH, 5:30-7:30 p.m.	Carroll ADM 204 Core
-----------------	--	----------------------------

See description above.

Course/Section Course Reference	Description/Credit Session/Time	Instructor Building/Room
------------------------------------	------------------------------------	-----------------------------

EN 201 10361	Advanced Grammar and Vocabulary (5) 7-week, Daily, 11:50 a.m.-1:00 p.m.	Douglas ADM 203
-----------------	---	--------------------

A study of traditional English grammar as it relates to issues of usage, punctuation, structural correctness and rhetorical effect in standard written English. A study of the formation, meaning and nuances of words, with attention to questions of usage and effectiveness.

EN 358 10376	Modernism in Art and Literature (5) 7-week, Daily, 9:10-10:20 a.m.	Taylor ADM 204
-----------------	---	-------------------

The roots of modernism, with emphasis upon artists and writers in Paris, 1890-1930, such as Picasso, Matisse, Joyce and Hemingway.

EN 391E 10387	Film and Literature (5) 7-week, Daily, 11:50 a.m.-1:00 p.m.	Taylor ADM 204
------------------	--	-------------------

Introduction to film art. The goal is to help students to see, understand, enjoy, and judge films more effectively, with assurance and validity.

EN 391E 10393	Religious Experience in Autobiography and Story (5) 7-week, Daily, 7:50-9:00 a.m.	Leigh ADM 308
------------------	---	------------------

A study of religious experience as expressed in stories and autobiographies of major writers such as Augustine of Hippo, Thomas Merton, C.S. Lewis, Flannery O'Connor, Dorothy Day, Malcolm X and others. Also offered under RS 293.

EN 391E 10409	Americans in Paris (5) August 12-26, in Paris, France	Weihe
------------------	--	-------

A social history of the expatriate writers and artists who created and celebrated Modernism in Paris in the 1920s. Course conducted entirely in Paris, approximately August 12-26. Contact instructor for details (296-5426, Casey 513) or Professor Taylor (296-5418).

Fine Arts

Drama

DR 230 10531	Video Profiles (5) First, Daily, 7:50-9:00 a.m.	Dore BU 119
-----------------	--	----------------

Designed for people who will appear in public in various roles and situations: interviews, group discussions, panels, and demonstrations. Students will be videotaped so that they may study themselves and evaluate the effectiveness of their appearances.

Music

MU 110A 10545	*Piano Lessons (1) 8-week, Arranged	Barnes BU 117
------------------	--	------------------

*Contact instructor or Fine Arts Department Office before beginning of term to schedule lessons. Classes are credit/no credit. No auditors. Tuition plus \$47 per credit hour additional fee charged for private lessons.

MU 110B 10559	*Piano Lessons (2) 8-week, Arranged	Barnes BU 117
------------------	--	------------------

See description above.

MU 111A 10562	*Voice Lessons (1) 8-week, Arranged	Schneider- Boreson BU 108
------------------	--	---------------------------------

*Contact instructor or Fine Arts Department Office before beginning of term to schedule lessons. Classes are credit/no credit. No auditors. Tuition plus \$47 per credit hour additional fee charged for private lessons.

MU 111B 10577	*Voice Lessons (2) 8-week, Arranged	Schneider- Boreson BU 108
------------------	--	---------------------------------

See description above.

MU 391E 10304	Pop and Rock'n'Roll: The Music and its Culture (5) 7-week, Daily, 9:10-10:20 a.m.	Mann BU 107
------------------	---	----------------

The history and cultural involvement of pop and rock'n'roll from the '50s to the present. Music, politics and the greening of America. Lots of tunes, no required text. Come boogie.

Course/Section Course Reference	Description/Credit Session/Time	Instructor Building/Room
------------------------------------	------------------------------------	-----------------------------

Foreign Languages

FR 115 10586 FR 125 10590 FR 135 10605	French Language I, II, III (15) 8-week, Daily, 8:00-11:30 a.m.	Milan/ Reinking ADM 208
---	--	-------------------------------

SP 115 10618 SP 125 10620 SP 135 10636	Spanish Language I, II, III (15) 8-week, Daily, 8:00-11:30 a.m.	Perozo/ Silva ADM 206
---	---	-----------------------------

These intensive, 15-credit courses are taught by skilled specialists using an intuitive approach to understanding, speaking, reading and writing in the language taught. These courses constitute a systematic, programmed study of the French or Spanish language. All language courses are taught in the subject language, and will take the beginning student through the first year of college French or Spanish in one quarter.

General Science

ISC 291E 10296	Principles of Geology (5) 8-week, Daily, 10:30-11:30 a.m.	R. Smith ENGR 304 Core Option
-------------------	--	-------------------------------------

Study of the principles of modern geology with consideration of both the physical and historical aspects. Topics will include: modern plate theory, tectonics, uniform processes, and the fossil record. Arranged field trips on weekends.

Health Information Administration

HI 460 10691	Management Internship (4) Second, Arranged	Hanken Arr
-----------------	---	---------------

Development of management skills and competencies in a seminar and in health-care facilities. Participation in professional practice activities with campus and clinical faculty. Prerequisite: HI 310, 311, 410.

HI 462 10702	Management Project (2) Second, Arranged	Hanken Arr
-----------------	--	---------------

Action research, management problems in health information systems. Campus and clinical faculty participate in projects submitted by health-related facilities. Prerequisite: HI 310, 311, 461.

HI 497	Independent Study (1-3) Second, Arranged	Hanken Arr
--------	---	---------------

History

HS 120 10460	Introduction to Western Civilization (5) 7-week, Daily, 1:10-2:20 p.m.	Fisher ADM 221 Core Option
-----------------	---	----------------------------------

A study of the ideas, values, and institutions that have comprised Western Civilization.

HS 120 10471	Introduction to Western Civilization (5) 7-week, Daily, 10:30-11:40 a.m.	Madsen ADM 221 Core Option
-----------------	---	----------------------------------

See description above.

HS 221 10485	Modern Western Civilization (5) 8-week, MWF, 7:20-9:00 a.m.	Harmon ADM 221 Core Option
-----------------	--	----------------------------------

An analysis of the modernizing Western World of the 19th and 20th centuries, the spread of modernization to the non-West and the tension between traditional and modernizing societies as a global problem of the 20th century.

Classes

Course/Section Course Reference	Description/Credit Session/Time	Instructor Building/Room
------------------------------------	------------------------------------	-----------------------------

HS 221 10492	Modern Western Civilization (5) 8-week, TTH, 5:30-8:00 p.m.	Parry ADM 221 Core Option
-----------------	--	---------------------------------

See description above.

HS 231 10508	Survey of U.S. History (5) 7-week, Daily, 9:00-10:20 a.m.	Siwundhla ADM 221
-----------------	--	----------------------

A topical survey focusing on the U.S. as a model of the "modern" society and an analysis of the conflicts generated by competing traditional and modern values systems in American society.

HS 317 10513	Peace and War in Western Civilization (5) 8-week, MWF, 10:30 a.m.-12:10 p.m.	Harmon ADM 222
-----------------	---	-------------------

Examination of major concepts regarding the nature of peace and war from classical times to the present. A review of efforts to define, achieve and insure peace in the Western tradition, social, political and philosophical-theological opposition to, or support for war.

HS 341 10524	History of the Pacific Northwest (5) 7-week, Daily, 9:00-10:20 a.m.	Saltvig ADM 222
-----------------	--	--------------------

Past development and present problems of the Pacific Northwest with emphasis on Washington state.

HS 391 13063	Europe Grows Up: Social and Cultural Transformation from the 19th to the 20th Centuries 7-week, Daily, 10:30-11:40 a.m.	Fisher ADM 324
-----------------	--	-------------------

The course examines novels, plays, film and painting as well as more conventional sources to "see" the birth of contemporary European culture.

HS 391E 10437	Introduction to World Civilization (5) 7-week, Daily, 9:10-10:20 a.m.	Parry ADM 223
------------------	--	------------------

A thematic and selective investigation of several world cultural areas analyzing the impact of modernization.

HS 391E 10446	Afro-American History (5) 7-week, Daily, 11:50 a.m.-1:00 p.m.	Siwundhla ADM 221
------------------	--	----------------------

An analysis of the Afro-American experience from slavery through the civil rights movement.

HS 397	Independent Study (1-5) Arranged	Staff Arr
--------	-------------------------------------	--------------

Institute for Theological Studies

ITS 506 10116	Christian Ethics (3) June 18-July 30, MW, 9:00-11:50 a.m.	Secker P 305
------------------	--	-----------------

Study of dynamics of moral decision-making, process of moral development, and principles of Christian moral action; development of methodology for addressing personal and social moral issues. Permission of director.

ITS 593C 10127	Theology of Suffering (3) July 2-27, MTTH, 6:30-9:00 p.m.	Wisner P 305
-------------------	--	-----------------

This course will consider how different cultures cope with suffering, and find hope and healing in this experience. Examples from the United States, Latin America and India. Permission of director. Also offered under ITSS 593C.

ITS 596	Independent Study (1-6) Arranged	Staff Arr
---------	-------------------------------------	--------------

ITS 597	Independent Study (1-6) Arranged	Staff Arr
---------	-------------------------------------	--------------

ITS 598	Independent Study (1-6) Arranged	Staff Arr
---------	-------------------------------------	--------------

ITS 599 10975	Graduate Project (3) June 21-August 2, TH, 9:00-11:50 a.m.	Steffes P 305
------------------	---	------------------

Classes

Course/Section	Description/Credit	Instructor
Course Reference	Session/Time	Building/Room

Institute for Theological Studies/ SUMORE

ITSS 501 Hebrew Scriptures (3) Eblen
10138 July 2-13, Daily, 9:00-11:50 a.m. MAD 101
Through working with variety of texts, students are exposed to the three major parts of the Hebrew Bible and the pluralism of viewpoints that came to expression in the biblical tradition. Permission of director.

ITSS 502 Christian Scriptures (3) Barta
10140 July 16-27, Daily, 9:00-11:50 a.m. MAD 101
The New Testament teems with various tensions and conflict experienced by early Christians. This course explores the "hermeneutics of the heart" attending to controversial issues of sexism, classism and racism challenged by New Testament theologies. Permission of director.

ITSS 505 Church (3) Padovano
10152 July 30-August 10, Daily, 9:00-11:50 a.m. MAD 101
Involves biblical, historical and theological reflections on the meaning of the church, aimed at a deeper understanding and living of its reality. Major themes include: Christ, spirit, power and authority, and role of women. Permission of director.

ITSS 507 Sacramental Theology (2) N. Topley/
10207 June 19-22, TWTHF, 2:00-4:30 p.m. R. Topley
June 25-28, MTWTH, 2:00-4:30 p.m. MAD 114
A general introduction to sacramental theology with particular reference to the sacraments of initiation, eucharist and reconciliation. Operating from a Vatican II principle of liturgical catechesis, these sacraments will be explored historically, theologically and pastorally. Permission of director.

ITSS 510 Christian Self-Understanding (3) Rolheiser
10169 June 19-29, Daily, 9:00-11:50 a.m. MAD 101
This course will draw upon insights from a variety of theological and psychological disciplines in an attempt to provide a wide Christian model for understanding the human person. Permission of director.

ITSS 511 History of Spirituality (3) Wright
10174 July 2-13, Daily, 9:00-11:50 a.m. MAD 114
This course is designed to introduce students to the rich variety within Christian spirituality through the study of selected texts, visual images, and major themes important to spiritual transformation. Permission of director.

ITSS 527 Convivial Global Community (2) Zappone
10183 July 16-27, MTWTH, 2:00-4:30 p.m. MAD 118
The first part of this course examines central themes of liberation theologies and spiritualities in light of our call to live justly. The second part of the course focuses on how to make personal and professional choices in the first world setting that supports a global community. Permission of director.

ITSS 552 Interpersonal Process (2) Ferder/
10195 June 19-28, Daily, 2:00-4:30 p.m. Heagle
MAD 110
This course reflects on the primary communication skills of attentive listening, knowing and expressing feelings, verbal clarity, self-disclosure, and managing conflict. Reflections will come from both a theological and psychological perspective. Majors only.

ITSS 553 Conflict Resolution (2) Rochelle-
10215 June 19-29, Daily, 9:00-10:50 a.m. Stephens
MAD 114
Enables more effectiveness in negotiating the large and small conflicts in professional and personal life. Includes theory input, interpersonal sharing, skill-building, and awareness exercises. Majors only.

Course/Section	Description/Credit	Instructor
Course Reference	Session/Time	Building/Room

ITSS 555 Organizational Development (3) Wilson
10221 June 19-29, Daily, 9:00-11:50 a.m. MAD 118
Using constructs derived from the whole field of organizational development, this course will seek to engage students in guided reflection, leading to decisions concerning ways they might effectively intervene in the systems they find themselves involved in. Majors only.

ITSS 571 Issues in Parish Leadership (2) Monette
11202 July 16-27, Daily, 9:00-10:50 a.m. MAD 118
This course will explore the issues raised by the emerging role of the non-ordained parish director, including the relationship of pastoral ministry to sacramental ministry, the centrality of the Eucharist and the relationship between the roles of the parish and the basic mission of the church. Permission of director.

ITSS 587 Practicum I (2) Staff
11217 July 16-27, MTTH, 2:00-4:30 p.m. MAD 110
This course helps those involved in ministry to determine areas for personal growth. A holistic-growth plan is introduced and used as the basis for a growth-covenant. Majors only.

ITSS 588 Practicum II (2) Staff
11226 July 19 and 26, TH, 7:00-9:30 p.m. MAD 114
This course consists of a process to help formulate professional goals which, with the aid of a local mentor, will enhance the performance of ministry. Majors only.

ITSS 588 Practicum II (2) Staff
11234 July 20 and 27, F, 12:30-3:00 p.m. MAD 114
See description above.

ITSS 591B Revelations and Fundamentalism (2) Rowan
10239 July 30-August 10, Daily, 9:00-10:50 a.m. MAD 118
In this course we will study the Book of Revelation by means of historical and rhetorical methods of textual analysis. The aim is to recover the meaning and the power of the text both for its original audience and for all who are in a similar situation. Permission of director.

ITSS 592A Feminist Critique of Catholic Social Teaching (1) Riley
10242 July 30-August 3, MTWTH, 2:00-4:30 p.m. MAD 118
This course is designed as a dialogue between some major themes of Catholic social thought and contemporary feminist ideologies: liberal, cultural, socialist and radical. It will examine the dimensions of the change the current women's movement has initiated and the critical questions that it raises for Catholic social teachings. Permission of director.

ITSS 592B Christian Sexuality (2) Ferder/
10250 July 2-13, MTWTH, 2:00-4:30 p.m. Heagle
MAD 114
An exploration of the biblical and psychological dimensions of embodiment and relationality, as they relate to the contemporary issues surrounding human sexuality. Majors only.

ITSS 592C Teaching and Learning in the Faith Community (3) Little
12818 July 2-13, Daily, 9:00-11:50 a.m. MAD 118
This course will examine literature in the area of theory and practice of teaching from the viewpoint of teaching as ministry. We will explore a variety of models, methods and skills and use these components in laboratory-type activities in class. Permission of director.

ITSS 593A Hispanic Spirituality and Ministry (1) Elizondo
10268 August 6-10, MTWTH, 2:00-4:30 p.m. MAD 114
An introduction to Hispanic spirituality and culture and its implications for our Catholic Christian identity and for the ministry of the church. Permission of director.

ITSS 593B Developing Religious Imagination (2) Gilligan
12805 July 16-27, Daily, 9:00-10:50 a.m. MAD 114
This course will explore the nature of religious education today, the philosophical foundations for imagination and the relationship between the two. In the second half of the course, three pressing global issues will be examined to see how religious education rooted in the imagination might address them. Permission of director.

Course/Section Course Reference	Description/Credit Session/Time	Instructor Building/Room
------------------------------------	------------------------------------	-----------------------------

ITSS 593C **Theology of Suffering (3)** **Wisner**
12964 **July 2-27, MTTH, 6:30-9:00 p.m.** **P 305**
This course will consider how different cultures cope with suffering, and find hope and healing in this experience. Examples from the United States, Latin America and India. Permission of director. Also offered under ITS 593C.

ITSS 598 **Independent Study (1-6)** **Staff**
Arranged **Arr**

ITSS 599 **Completion Project (3)** **Staff**
10929 **Arranged** **Arr**

Mathematics

MT 118 **College Algebra for Business (5)** **Yandi**
10717 **7-week, Daily, 7:50-9:00 a.m.** **BA 403**
Core Option

Sets; functions; graphing; polynomial, exponential, and logarithmic functions; linear equations and inequalities; applications to business. Prerequisite: MT 101 or equivalent.

MT 130 **Elements of Calculus for** **Mirbagheri**
10726 **Business (5)** **BA 502**
7-week, Daily, 9:10-10:20 a.m. **Core Option**

Limits; continuity; differentiation; integration; applications to business. Prerequisite: MT 118 or MT 111.

MT 136 **Calculus and Analytic Geometry III (5)** **Yandi**
10734 **7-week, Daily, 10:30-11:40 a.m.** **BA 502**
Indeterminate forms; infinite series and Taylor's theorem; vectors; polar coordinates; solid analytic geometry. Prerequisite: MT 135.

MT 200 **Mathematics for K-8 Teachers (5)** **W. Guy**
10743 **First, Daily, 9:10-11:10 a.m.** **BA 403**
Systems of numeration; algorithms; sets; logic; introduction to probability and statistics. Prerequisite: MT 101 or MT 107 or equivalent.

MT 222 **Discrete Structures (5)** **Sullivan**
10751 **7-week, Daily, 1:10-2:20 p.m.** **BA 403**
Logic, set theory; equivalence relations and partitions; algebraic structures; combinatorics; graph theory; applications to computer science. Prerequisite: MT 135 and CSC 113, 114, or 151.

MT 232 **Multivariable Calculus (3)** **Staff**
10765 **7-week, MTTHF, 10:30-11:40 a.m.** **BA 201**
Partial derivatives, multiple integration and applications. Prerequisite: MT 136.

MT 233 **Linear Algebra (3)** **Mirbagheri**
10778 **7-week, MTTHF, 7:50-9:00 a.m.** **BA 502**
Matrices, determinants; vector spaces, linear transformations, eigenvalues. Prerequisite: MT 136.

Military Science

MS 296 **Independent Study (1-3)** **Staff**
Arranged **Arr**
Prerequisite: permission of instructor.

MS 314 **Advanced Camp (4)** **Staff**
10882 **Arranged** **NOC**
Successful completion is prerequisite to commissioning. At Ft. Lewis students are placed in a variety of roles to practice leadership and management competencies in the broader context of officership. Prerequisite: Permission of instructor, MS 311, 312, and 313.

MS 315 **Advanced Camp - Nursing (4)** **Staff**
10898 **Arranged** **NOC**
Successful completion is prerequisite to commissioning. At Madigan Army Medical Center nursing students are placed in a variety of roles as Army nurses to develop their professional competencies, both as nurses and as officers. Prerequisite: Permission of instructor, MS 311, 312, and 313.

Classes

Course/Section Course Reference	Description/Credit Session/Time	Instructor Building/Room
------------------------------------	------------------------------------	-----------------------------

MS 496 **Independent Study (1-5)** **Staff**
Arranged **Arr**

Prerequisite: Permission of instructor.

Philosophy

PL 110 **Introduction to Philosophy and** **Hopkins**
11767 **Critical Thinking (5)** **ADM 204**
8-week, TTH, 5:30-8:00 p.m. **Core**

Key philosophical problems provide the context for developing habits of critical reflection, logical reasoning, and argumentative writing.

PL 110 **Introduction to Philosophy** **Dombrowski**
11775 **and Critical Thinking (5)** **ADM 207**
7-week, Daily, 10:30-11:40 a.m. **Core**

See description above.

PL 110 **Introduction to Philosophy and** **Dombrowski**
11781 **Critical Thinking (5)** **ADM 207**
7-week, Daily, 9:10-10:20 a.m. **Core**

See description above.

PL 220 **Philosophical Problems: Human** **Risser**
11794 **Person (5)** **ADM 202**
8-week, MW, 5:30-8:00 p.m. **Core**

Systematic study of the nature and powers of the human person. Special emphasis on the problems of human knowing, freedom and responsibility.

PL 220 **Philosophical Problems: Human** **Bjelland**
11801 **Person (5)** **ADM 205**
7-week, Daily, 9:10-10:20 a.m. **Core**

See description above.

PL 220 **Philosophical Problems: Human** **Burke**
11816 **Person (5)** **ADM 324**
June 18-July 20, 5-week, Daily, **Core**
7:50-9:30 a.m.

See description above.

PL 220 **Philosophical Problems: Human** **Stickers**
11827 **Person (5)** **ADM 203**
7-week, M,W,F, 1:10-3:05 p.m. **Core**

See description above.

PL 260 **Logic I (5)** **Bjelland**
11852 **7-week, Daily, 10:30-11:40 a.m.** **ADM 308**
Old Core
Option

Systematic treatment of traditional logic.

PL 306 **Philosophy and Psychology: Jung (5)** **Hopkins**
11874 **7-week, Daily, 11:50 a.m.-1:00 p.m.** **ADM 202**
Old Core
Option

Study of the interrelationships between philosophical methods and content, and the method and content of psychology. This course will emphasize Carl Jung. Also offered under PSY 391E.

PL 345 **Ethics (5)** **Stickers**
11838 **7-week, M,W,F, 8:25-10:20 a.m.** **ADM 320**
Core Option

Systematic study of ethical theory, the character of ethical reasoning, and the levels of ethical discourse, with application of ethical theory to specific problems.

Classes

Course/Section Course Reference	Description/Credit Session/Time	Instructor Building/Room
------------------------------------	------------------------------------	-----------------------------

PL 345 11840	Ethics (5) June 18-July 20, 5-week, Daily, 10:30 a.m.-12:10 p.m.	Burke ADM 308 Core Option
-------------------------------	---	--

Systematic study of ethical theory, the character of ethical reasoning, and the levels of ethical discourse, with application of ethical theory to specific problems.

PL 352 11869	Health Care Ethics (5) 7-week, Daily, 10:30-11:40 a.m.	Staff ADM 306 Core Option
-------------------------------	---	--

Application of general ethical theory to basic problems encountered in the medical profession: fees, professional secrecy, rights of patients, abortion, transplants, and drugs.

Physics

PH 101 10857	Introduction to Astronomy (5) 7-week, MTTHF 10:30-11:40 a.m. Laboratory: W, 10:30 a.m.-12:30 p.m.	Toutonghi BA 401 Core Option
-------------------------------	--	---

A survey of astronomy starting with a description of the visually observed skies and their apparent motions; historical development of attempts to explain the observed motions beginning with the Greek synthesis and ending with the "Moderns" including Newton; a description of the cataloging of stellar properties starting with determination of distances to stars and ending with their plot on the H-R diagram; our theories of the birth, life and death of stars. The course emphasizes the observation bases of our several models, and includes a two-hour weekly laboratory. Prerequisite: Core mathematics requirement.

PH 201 10866	Electricity and Magnetism (5) 7-week, MTTHF, 9:10-10:20 a.m. Laboratory: TH, 2:10-5:00 p.m.	Staff BA 301
-------------------------------	--	-------------------------------

Physics for students of Science and Engineering. Prerequisite: PH 200, MT 135.

PH 491D 12891	Fiber Optics Systems (4) 8-week, TTH, 4:00-6:00 p.m.	Green BA202
--------------------------------	---	------------------------------

Fiber optics for communications: components, links, and networks, link analysis and design, survey of application areas. Tradeoffs and design issues for optical communications networks. Prerequisite: Senior standing in electrical engineering or physics.

Political Science

PLS 205 12030	American National Government (5) 8-week, TTH, 5:30-8:00 p.m.	R. Young ADM 203 Core Option
--------------------------------	---	---

Constitutional and historical foundations of federal government. Power, class and culture in shaping participation and public policy. Conservative, radical and reformist views.

PLS 210 12048	Introduction to Local and State Politics (5) 8-week, TTH, 5:30-8:30 p.m.	Hogan ADM 205
--------------------------------	---	--------------------------------

Local, state, county, and special district government structures and political processes. Proposals for reform.

PLS 260 12056	Introduction to Global Politics (5) 8-week, MWF, 8:50-10:20 a.m.	Anthony ADM 306 Core Option
--------------------------------	---	--

Politics in the global community. Power, nationalism, sovereignty, imperialism, colonialism, hunger and development.

PLS 305 12067	The Policy Process (5) 8-week, MW, 5:30-8:00 p.m.	R. Young ADM 203
--------------------------------	--	-----------------------------------

The interplay of the White House, Congress, administrative agencies, interest groups and public media in setting priorities and forming public policy. Prerequisite: PLS 205.

Course/Section Course Reference	Description/Credit Session/Time	Instructor Building/Room
------------------------------------	------------------------------------	-----------------------------

PLS 365 12075	U.S. Foreign Policy (5) 8-week, MWF, 10:30 a.m.-Noon	Scharf ADM 307
--------------------------------	---	---------------------------------

How American values and political processes lead us to shape our contemporary world. Role of president, Congress, special interests.

Psychology

PSY 201 11959	Statistics I (5) 7-week, Daily, 9:10-10:20 a.m.	Gaffney P 454
--------------------------------	--	--------------------------------

Basic descriptive and inferential statistics; central tendency, variability, correlation and regression, probability, z & t tests, one-way analysis of variance.

PSY 315 11962	Abnormal Psychology (5) 8-week, MW, 1:10-3:40 p.m.	Krycka P 302 Old Core Option
--------------------------------	---	---

Survey of abnormal mental and emotional life; symptoms, nature, and causes of psychological disorders; abnormalities of specific functions; theories of etiology. Prerequisite: PSY 100/120.

PSY 375 11977	Psychology of Death and Dying (5) 8-week, TTH, 1:10-3:40 p.m.	Young P 405
--------------------------------	--	------------------------------

Course will concentrate on developing skills in grief counseling. Some areas be studied: various cross-cultural means of coping with loss, children's perception of death, reconciliation, and creative renewal. Prerequisite: PSY 100/120.

PSY 391E 11986	Psychology and Art (5) 8-week, TTH, 5:30-8:00 p.m.	Young P 453
---------------------------------	---	------------------------------

Course is centered around clinical applications of artistic methods of expression in a variety of contexts. Various settings for art therapy will be studied, e.g., counseling sessions, hospitals, hospices. Prerequisite: PSY 100/120.

PSY 391E 11990	Psychology and Philosophy: Jung (5) 7-week, Daily, 11:50 a.m.-1:00 p.m.	Hopkins ADM 322
---------------------------------	--	----------------------------------

Study of the interrelationships between philosophical methods and content and the methods and content of psychology. Course will emphasize Carl Jung. Also offered under PL 306.

PSY 391E 12003	Psychology of Consciousness (5) 8-week, MW, 5:30-8:00 p.m.	Krycka ADM 324
---------------------------------	---	---------------------------------

Course designed to explore human consciousness experientially and theoretically. Using various models employed during human history to explain human consciousness. We will be concerned with how we can understand this phenomenon in our own lives. Prerequisite: PSY 100/120.

PSY 427 12012	Introduction to Counseling (5) 8-week, MW, 1:10-3:40 p.m.	Rowe ADM 324
--------------------------------	--	-------------------------------

Basic theory, principles and dynamics of the counselor-client relationship and the counseling process. Prerequisite: PSY 100/120 and junior or senior standing.

PSY 490 12737	Symposium on Alcoholism: Focus on Youth (3) June 18-29, Daily, 9:00 a.m.-4:00 p.m.	Roise ADM 220
--------------------------------	---	--------------------------------

History, scope, physiological, social, psychological and family aspects of alcohol problems. Drunk driving. Progression, symptoms, types of alcoholics. Nature of addictive diseases: causality, treatment and prevention. Special emphasis for the 1990 Symposium: Focus on Youth. Also offered under ED 491C and ADD 400.

PSY 591C 12029	Political Psychology (3) 7-week, Arranged	Gerber Arr
---------------------------------	--	-----------------------------

Readings, discussions, and short writing assignments in an interdisciplinary area that has developed since WWII, paralleling the increasingly dangerous and globally connected world we live in.

Course/Section Course Reference	Description/Credit Session/Time	Instructor Building/Room
------------------------------------	------------------------------------	-----------------------------

Public Administration – Graduate Program

PUB 512 11883	The Implementation Process (3) 8-week, M, 5:30-8:30 p.m.	Hopps ADM 220 Core
-------------------------	--	---------------------------------

How public policies become public programs. Interplay of executive, legislative, judicial, and executive branches. Inter-governmental and inter-agency relations. Prerequisite: PUB 511.

PUB 562 11895	Oral Communication for Administrators (3) 8-week, W, 5:30-8:30 p.m.	Wildeson ADM 205 Core
-------------------------	---	------------------------------------

Oral communication within the context of the contemporary organization. Some theory, but emphasis on performance. Differentiated assignments according to the needs and professional applications of students.

PUB 585 11908	Management of Change (3) June 22, July 6, 27, F, 6:00-9:30 p.m. June 23, July 7, 28, S, 9:00 a.m.-2:00 p.m.	D. Mills ADM 220
-------------------------	--	----------------------------

A course on the future: forecasting methods, trends, scenarios. Discussions of change processes (diffusion, revolution, attitude change) and methods of responding.

PUB 591C 11913	Issues in Management (3) June 23, July 7, 28, S, 3:00-6:00 p.m. June 24, July 8, 29, Sunday, 9:00 a.m.-3:00 p.m.	D. Mills ADM 220
--------------------------	--	----------------------------

Course will focus on new developments in the study of organizational culture, climate, conflict and change, with particular emphasis on their application to the daily experience of leadership. Designed for graduate students who have at least one course in management.

PUB 595	Internship (1-3) Arranged	Staff Arr
----------------	-------------------------------------	---------------------

PUB 597	Independent Study (1-5) Arranged	Staff Arr
----------------	--	---------------------

PUB 598	Independent Study (1-5) Arranged	Staff Arr
----------------	--	---------------------

Sociology

SC 120 12081	Introductory Sociology (5) First, Daily, 7:50-9:00 a.m.	Lawrence P 302
------------------------	---	--------------------------

Two major topics: social basis of everyday life examined cross-culturally and analysis of transition from traditional to modern society as manifest in work, family, religion and ethnicity.

SC 311 12094	Social Work with Families (5) 8-week, M, 1:10-6:00 p.m.	Livingston ADM 206
------------------------	---	------------------------------

Examination of two meanings of social work (traditional and changing) as reflected in our choices of strategies and expressions of concern about health and power of our families.

SC 393 12723	Popular Culture (5) First, Daily, 9:20-11:30 a.m.	Lawrence P 456
------------------------	---	--------------------------

Investigates contemporary culture from Batman to Spike Lee, from Skinheads to "New Age" through film, music videos, soap operas and advertisements. Social political and aesthetic theories applied.

SC 493 13018	Social Work with Women (5) 8-week, T, 1:10-6:00 p.m.	Livingston ADM 206
------------------------	--	------------------------------

How women think and what they think about cross-culturally examined with respect to personal and public, spiritual and material concerns and how these affect social work.

Classes

Course/Section Course Reference	Description/Credit Session/Time	Instructor Building/Room
------------------------------------	------------------------------------	-----------------------------

Theology and Religious Studies

RS 200 10019	Judaean-Christian Origins (5) 8-week, TTH, 5:30-8:00 p.m.	Quitslund ADM 207 Core Phase II
------------------------	---	--

Historical background and development of Israelite and Jewish religious experience and tradition; its contribution to the foundations of the Christian community.

RS 217 10022	Message of Paul (5) 7-week, Daily, 10:30-11:40 a.m.	Early ADM 205 Core Phase II
------------------------	---	--

Description of the Christian experience given to us in the Pauline letters; Paul's experience of Christ; development of his thought in some dominant themes or perspectives; the influence of the believing community and of contemporary history and culture on his experience and development; relation of his message to all times and people.

RS 243 10035	Christians in Action (5) 7-week, Daily, 9:10-10:20 a.m.	Hart ADM 307 Core Phase II
------------------------	---	---

Moral and spiritual development in general and the Christian tradition in particular within the broader human quest for a way of life that brings lasting happiness and satisfaction. The central component is the study of scriptures, focusing upon the notion of prophetic call in the Hebrew scriptures and the New Testament message of the Kingdom of God and life in the Spirit.

RS 293E 13072	Religious Experience in Autobiography and Story (5) 7-week, Daily, 7:50-9:00 a.m.	Leigh ADM 308 Core Phase II
-------------------------	---	--

A study of religious experience as expressed in autobiographies by major religious thinkers, such as St. Augustine of Hippo, Dorothy Day, Thomas Merton, Gandhi, C.S. Lewis, and Malcolm X. Also offered under 391E.

RS 307 10053	Theology of the Feminine (5) 8-week, MW, 5:30-8:00 p.m.	Barta ADM 207 Core Phase III
------------------------	---	---

Investigation of what has been communicated to men and women historically about who and what they are, what their roles are in church and society; a look at the changing understanding of what it is to be human, generated by a rising consciousness of both women's and men's issues. Prerequisite: Core Phase II.

RS 338 10064	Christian Views of Love, Sex, Marriage (5) Second, Daily, 9:10-11:40 a.m.	Chamberlain ADM 220
------------------------	---	-------------------------------

Examination of uses and abuses of human sexuality in Western culture in light of Judeo-Christian tradition. Contemporary understandings of sexuality; historical background which shapes attitudes, beliefs, values about sexuality; critical examination of marriage as confluence of sexuality, fidelity, commitment. Examination of several problem areas in sexuality from a Christian perspective. Discussion of opposing views; reflection on students' views, attitudes, values. Prerequisite: Core Phase II.

RS 393E 10070	Theology of Story (5) 7-week, Daily, 7:50-9:00 a.m.	Navone ADM 202 Core Phase III
-------------------------	---	--

The narrative quality of religious experience: the myths and models people live by in the process of human experiencing, with special attention to the quest for communion/communication. Prerequisite: Core Phase II.

RS 397	Independent Study (1-5) Arranged	Staff Arr
---------------	--	---------------------

SUMMER SESSION ONLY

Seattle University Summer School Application for Admission

SUMMER SESSION ONLY

Check one:

Application for ADMISSION: regular grad ☐ regular undergrad ☐
 Application for READMISSION: ☐ no fee

\$25 fee

FULL LEGAL NAME—LAST		FIRST	MIDDLE	FORMER NAME(s)
MAILING ADDRESS				AREA CODE/PHONE
CITY		STATE		ZIP

Social Security Number

/ /

BIOGRAPHICAL INFORMATION

SEX <input type="checkbox"/> FEMALE <input type="checkbox"/> MALE	MARITAL STATUS <input type="checkbox"/> SINGLE <input type="checkbox"/> MARRIED	ETHNIC ORIGIN (OPTIONAL) <input type="checkbox"/> AMERICAN INDIAN <input type="checkbox"/> ASIAN AMERICAN	<input type="checkbox"/> BLACK AFRO AMERICAN <input type="checkbox"/> HISPANIC AMERICAN <input type="checkbox"/> WHITE AMERICAN	<input type="checkbox"/> FOREIGN NATIONAL <input type="checkbox"/> OTHER	RELIGION (OPTIONAL) <input type="checkbox"/> CATHOLIC <input type="checkbox"/> OTHER
---	---	---	---	---	--

Birthdate _____ Birthplace _____	Citizen of U.S.A. Yes <input type="checkbox"/> No <input type="checkbox"/>	Country of Citizenship if not U.S.A. TOEFL required of all applicants whose native language is other than English.	Type of Visa
-------------------------------------	--	--	--------------

CHECK YOUR STATUS HERE:

- ☐ Undergraduate/Transfer
☐ Graduate
☐ Second Degree
☐ 5th Year
 Transitional (non-degree seeking):
☐ Undergrad (Courses 100-499)
☐ Graduate (Courses 500+)

Are you currently enrolled at S.U.? ☐ Yes ☐ No
 Have you been enrolled at S.U.? ☐ Yes ☐ No Quarter _____ Year _____
 Any other name under which you were enrolled? _____

For Office Use Only:

Dept. _____ / _____
 Dean _____ / _____

IF YOU ARE SEEKING
A DEGREE FROM SU,
WHAT **MAJOR** IS
DESIRED?

(IF NO DEGREE IS
SOUGHT, FILL OUT
BOX TO RIGHT) →

This application does **NOT** constitute registration; for planning purposes, please indicate class(es) for which you wish to register:

Course No.	Title	Term: 1 <input type="checkbox"/> 2 <input type="checkbox"/>
Course No.	Title	Term: 1 <input type="checkbox"/> 2 <input type="checkbox"/>
Course No.	Title	Term: 1 <input type="checkbox"/> 2 <input type="checkbox"/>

IF YOU WERE ENROLLED AT S.U. WITHIN THE LAST YEAR: IF YOU WISH THE SAME MAJOR AND PROGRAM AND IF YOU HAVE TAKEN NO INTERVENING COURSES AT OTHER UNIVERSITIES, CHECK BOX AT FAR RIGHT AND SKIP TO SIGNATURE.

☐ NO INTERVENING
COURSE WORK

NOTE: IF THIS IS YOUR FIRST APPLICATION FOR GRADUATE DEGREE PROGRAM, DO NOT SKIP.

ARE YOU NOW ENROLLED ELSEWHERE? <input type="checkbox"/> Yes <input type="checkbox"/> No	IF YES, WHAT ARE YOU STUDYING AND WHEN WILL YOU FINISH?					
LIST ALL COLLEGIATE INSTITUTIONS, INCLUDING SEATTLE UNIVERSITY, IN ORDER OF ATTENDANCE						
INSTITUTION	CITY	STATE	DATES ATTENDED FROM TO	DEGREE	DATE RECEIVED	MAJOR
1)						
2)						
3)						
4)						
5)						

CURRENT EMPLOYER—NAME OF FIRM	JOB TITLE	BUSINESS PHONE
CURRENT EMPLOYER—BUSINESS ADDRESS	CITY STATE ZIP	DATE EMPLOYED

DATE _____ SIGNATURE _____

Return to Office of Admissions, Seattle University, Seattle, Washington 98122

PHONE: (206) 296-5800 Toll Free: Within Washington, 1-800-542-0833 Out-of-State, 1-800-426-7123



Director

Summer Sessions

Broadway and Madison

Seattle, Washington 98122

SUMMER SESSIONS