

1987

1987 Bulletin of Information - Summer School

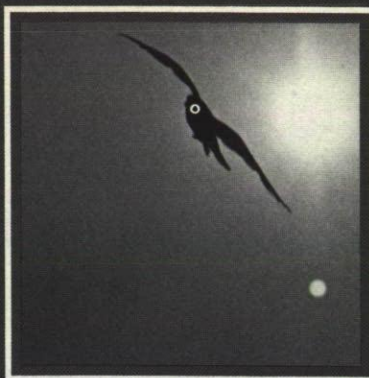
Seattle University

Follow this and additional works at: <http://scholarworks.seattleu.edu/bulletinofinformation>

Recommended Citation

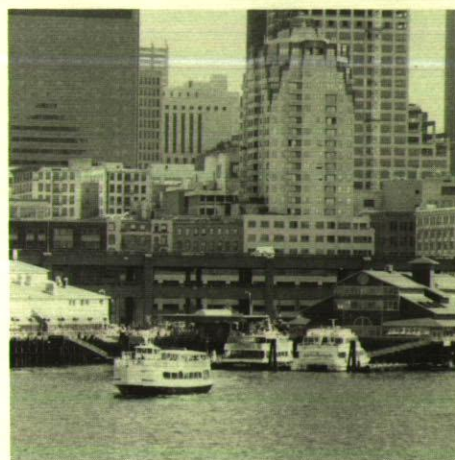
Seattle University, "1987 Bulletin of Information - Summer School" (1987). *Bulletin of Information*. 130.
<http://scholarworks.seattleu.edu/bulletinofinformation/130>

This Bulletin is brought to you for free and open access by ScholarWorks @ SeattleU. It has been accepted for inclusion in Bulletin of Information by an authorized administrator of ScholarWorks @ SeattleU.



**BULLETIN OF
INFORMATION**

**Seattle
University**
Summer Session
June 22 to August 14, 1987



SUMMER 1987

Director of Summer School
Joseph B. Monda, Ph.D.
Seattle University
Seattle, Washington 98122

Where to Call for Detailed Information

| | |
|--|----------|
| Admissions Office | 626-5720 |
| Alcohol Studies Office | 626-6498 |
| Alumni Office | 626-5656 |
| Arts and Sciences, College of | 626-5986 |
| Bellarmino Hall | 626-6858 |
| Business, Albers School of | 626-5456 |
| Campion Tower | 626-5638 |
| Campus Ministry | 626-5900 |
| Continuing Education | 626-6626 |
| Controller's Office | 626-5747 |
| Counseling Center | 626-5846 |
| Education, School of | 626-5416 |
| Financial Aid Office | 626-5462 |
| General Studies | 626-5387 |
| Graduate School | 626-6320 |
| Housing (Resident Student Services) | 626-5920 |
| Institute for Theological Studies | 626-5318 |
| International Student Adviser | 626-5388 |
| Library, A.A. Lemieux | 626-6859 |
| Matteo Ricci College II | 626-5379 |
| Minority Affairs Office | 626-6226 |
| Nursing, School of | 626-6380 |
| Registrar's Office | 626-5700 |
| Science and Engineering, School of | 626-6250 |
| Student Life | 626-5685 |
| Summer School Director | 626-5361 |
| SUMORE — see Institute for Theological Studies | 626-5318 |
| Xavier Hall | 626-6595 |

For Information

ADMISSIONS
(206) 626-5720

REGISTRAR
(206) 626-5700

SCHOOL OF EDUCATION
(206) 626-5416

Volume 18, No. 4
Summer 1987

Seattle University
Bulletin of Information USPS 487-740
Published Quarterly by Seattle University
Seattle, Washington 98122
Second class postage paid at Seattle, Washington

POSTMASTER: Send address changes to Summer School Director, Seattle University, Seattle, WA 98122

An Equal Opportunity Employer

Editor/Jean Merlino

Information concerning graduate and undergraduate programs may be obtained in supplementary bulletins.



ACADEMIC CALENDAR

| | |
|--|-------------------------|
| Advance Registration | April 20-24 |
| Evening hours to 7:00 p.m. | April 20, 21 |
| Advance Registration Closed | April 25-June 18 |
| Registration Days | |
| Full Sessions and First Term | June 19 and 22 |
| Evening hours to 7:00 p.m. | June 22 |
| Second Term | July 20, 21 |
| Other Short Term Courses and Workshops | First two days of class |
| Classes Begin | June 22 |
| Last day to drop with 100% refund | First day of class |
| Late Registration | |
| Full Sessions and First Term | June 23-26 |
| Add/Drop/Change | June 19-26 |
| Independence Day Observance (no classes) | July 3 |
| Last Day to Withdraw, First Term | July 13 |
| Close of First Term | July 17 |
| Registration, Second Term | July 20, 21 |
| Last Day to Withdraw, Second Term and Full Sessions | July 31 |
| Final Examinations | |
| First Term | July 17 |
| Seven-Week Full Session | August 6, 7 |
| Eight-Week Full Session and Second Term | August 13, 14 |

Summer 1987

| | |
|--------------------------|-------------------|
| 7-Week Session | June 22-August 7 |
| 8-Week Session | June 22-August 14 |
| First 4-Week Term | June 22-July 17 |
| Second 4-Week Term | July 20-August 14 |

Seattle University

Seattle University is an independent, coeducational institution, operated under the auspices of the Jesuit Order, with a faculty and staff which includes Jesuits as well as lay people of various faiths.

The University is composed of nine major academic units with 44 undergraduate and 12 graduate programs of study: the College of Arts and Sciences, Albers School of Business, School of Education, School of Science and Engineering, School of Nursing, Matteo Ricci College II, Graduate School, Institute of Public Service, and Institute for Theological Studies.

Seattle University is accredited by the Northwest Association of Schools and Colleges, National League for Nursing, American Chemical Society, Council on Rehabilitation Education, Committee on Allied Health Education and Accreditation, Accreditation Board for Engineering and Technology, National Council for Accreditation of Teacher Education, and the American Assembly of Collegiate Schools of Business. It is also a member of the Independent Colleges of Washington.

The University's teacher training programs are approved by the State of Washington and qualify its students for teaching certificates and principals' credentials issued by the State Department of Public Instruction. The School of Education, approved by the Washington State Board of Education, offers programs leading to the Bachelor of Arts in Education and the Bachelor of Education degrees and graduate and fifth-year programs.

The Graduate School includes Master's programs in business administration, education, psychology, public administration, rehabilitation, religious education and ministry, and software engineering. It also includes a Doctoral program in Education and the Institute for Theological Studies.

SUMMARY OF 1987 SUMMER SCHOOL CLASSES

Summary 1987 — See complete course listings of ALL CLASSES, pages 16-30.

Alcohol Studies

| | | |
|--------------|---|----------|
| Alc 400 01 | Symposium on Alcoholism (3) | 6/22-7/2 |
| Alc 401 01 | Pharmacology/Physiology of Alcohol Use (2) | 8-week |
| Alc 402 01 | Counseling Principles/Techniques (4) | 8-week |
| Alc 402 02 | Counseling Principles/Techniques (4) | 8-week |
| Alc 403 01 | Personal/Social Rehabilitation (2) | 8-week |
| Alc 405 01 | Law and Alcohol (2) | 8-week |
| Alc 407 01 | Field Experience I-Alcoholism (3) | 8-week |
| Alc 408 01 | Field Experience II-Drug Abuse (3) | 8-week |
| Alc 410 50 | Individual Research (1-3) | 8-week |
| Alc 413 01 | Alcoholism Schools Workshop (2) | 7/6-10 |
| Alc 421 50 | Advanced Project or Research in Alcoholism/Drug Abuse (2-5) | 8-week |
| Alc 422 01 | Alcoholics Anonymous As a Resource for Professionals (2) | 7/6-17 |
| Alc 425 01 | Drug Abuse II: Physiological Aspects (2) | 8-week |
| Alc 491 SA01 | Alcoholics Anonymous: Recovery As Spiritual Path (1) | 6/25,26 |
| Alc 491 SB01 | Prevention Programs (2) | 6/22-7/2 |
| Alc 491 SC01 | Grief and Loss (1) | 7/20-24 |
| Alc 491 SD01 | Alcohol and Nutrition (1) | 7/27-31 |
| Alc 491 SE01 | Anorexia and Alcoholism (2) | 7/27-31 |
| Alc 491 SF01 | Adult Children of Alcoholics (2) | 8-week |
| Alc 491 SG01 | Intervention Process (2) | 8-week |
| Alc 491 SH01 | Normal Family Dynamics (2) | 8-week |
| Alc 492 SA01 | Alcohol and Schools (2) | 7/13-17 |

Allied Health

| | | |
|-----------|--|--------|
| AH 396 50 | Cytotechnology Internship (0) | Arr |
| AH 453 01 | Applied Nuclear Medicine Technology IV (7) | Arr |
| AH 459 01 | Nuclear Medicine Seminar IV (2) | Arr |
| AH 473 01 | Clinical Orientation-Ultrasound (10) | Arr |
| AH 474 01 | Clinical Experience-Ultrasound (8) | Arr |
| AH 483 01 | Ultrasound Seminar (2) | 8-week |
| AH 484 01 | Basic Science of Ultrasound (2) | Arr |

Biology

| | | |
|-----------|---|--------|
| BI 182 01 | Elementary Human Anatomy and Physiology (5) | 8-week |
|-----------|---|--------|

Business

| | | |
|--------------|---|--------|
| Bus 230 01 | Principles of Accounting I (5) | 8-week |
| Bus 231 01 | Principles of Accounting II (5) | 8-week |
| Bus 260 01 | Business Statistics (5) | 8-week |
| Bus 270 01 | Law and Business (5) | 8-week |
| Bus 310 01 | Computer-based Management Information Systems (5) | First |
| Bus 330 01 | Cost Accounting (5) | 8-week |
| Bus 333 01 | Intermediate Accounting II (5) | 8-week |
| Bus 334 01 | Intermediate Accounting III (5) | 8-week |
| Bus 340 01 | Business Finance (5) | 8-week |
| Bus 350 01 | Introduction to Marketing (5) | 8-week |
| Bus 360 01 | Production and Operations Management (5) | Second |
| Bus 380 01 | Organization Behavior (5) | 8-week |
| Bus 391 SA01 | Japan and the West (5) | 8-week |
| Bus 435 01 | Auditing (5) | 8-week |
| Bus 482 01 | Business Policy and Organization (5) | 8-week |
| Bus 496 50 | Independent Study (1-5) | Arr |

Business Graduate Courses

| | | |
|--------------|--|----------|
| Bus 501 01 | Business Statistics (3) | 8-week |
| Bus 502 01 | Financial Accounting (3) | 8-week |
| Bus 506 01 | Economic Analysis (3) | 8-week |
| Bus 507 01 | Organization Behavior (3) | 8-week |
| Bus 508 01 | Production and Operations Management (3) | 8-week |
| Bus 530 01 | Managerial Accounting (3) | 8-week |
| Bus 539 53 | Research in Accounting (3) | Arr |
| Bus 549 53 | Research in Finance (3) | Arr |
| Bus 550 01 | Domestic/International Marketing (3) | 8-week |
| Bus 559 53 | Research in Marketing (3) | Arr |
| Bus 562 01 | Advanced Statistical Analysis (3) | 8-week |
| Bus 566 01 | Forecasting Business Conditions (3) | 8-week |
| Bus 569 53 | Research Operations/Systems (3) | Arr |
| Bus 570 01 | Managerial Economics (3) | 8-week |
| Bus 576 01 | Finance for International Business (3) | 8-week |
| Bus 577 01 | Business Responsibilities/Ethics (3) | 8-week |
| Bus 579 53 | Research Environmental Area (3) | Arr |
| Bus 585 01 | Management of Change (3) | 7/24-8/8 |
| Bus 586 01 | Entrepreneurship and Small Business Management (3) | 8-week |
| Bus 589 53 | Research Behavioral Area (3) | Arr |
| Bus 591 SA01 | Seminar in Negotiating, Mediating and Advocating (3) | First |
| Bus 591 SB01 | Quality Control (3) | 8-week |
| Bus 591 SC01 | Industrial Organization (3) | 8-week |
| Bus 591 SD01 | Management Information Systems (3) | 8-week |
| Bus 595 01 | Business Policy (3) | 8-week |
| Bus 596 50 | Independent Study (1-3) | Arr |

Chemistry

| | | |
|-----------|-------------------------------|--------|
| Ch 110 01 | Fundamentals of Chemistry (5) | 8-week |
| Ch 241 01 | Organic Chemistry I (4) | First |
| Ch 242 01 | Organic Chemistry II (4) | Second |
| Ch 251 01 | Organic Chemistry Lab I (2) | First |
| Ch 252 01 | Organic Chemistry Lab II (2) | Second |
| Ch 499 50 | Undergraduate Research (1-6) | Arr |

Community Services (See Sociology)

Computer Science

| | | |
|--------------|---|--------|
| CSC 103 01 | Introduction to Computers and Applications (5) | 8-week |
| CSC 113 01 | Introductory Programming w/BASIC (5) | 8-week |
| CSC 114 01 | Intro. Programming w/FORTRAN (5) | 8-week |
| CSC 150 01 | Intro. to Computer Science (5) | 8-week |
| CSC 170 01 | Intermed. Programming w/PASCAL (5) | 8-week |
| CSC 235 01 | Computer Systems and Assembler Language (5) | 8-week |
| CSC 491 SA01 | Special Topics: C Language Programming on the MacIntosh (5) | 8-week |

SUMMARY OF 1987 SUMMER SCHOOL CLASSES

Criminal Justice Program

| | | |
|--------------|-------------------------|--------|
| CJP 291 SA01 | Polygraph (5) | 7-week |
| CJP 378 01 | Field Experience I (5) | 7-week |
| CJP 379 01 | Field Experience II (5) | 7-week |
| CJP 496 50 | Independent Study (1-5) | 7-week |

Economics

| | | |
|-----------|-----------------------------------|--------|
| Ec 271 01 | Principles of Economics-MACRO (5) | 8-week |
|-----------|-----------------------------------|--------|

Education

| | | |
|-------------|--|----------|
| Ed 424 01 | Intro. to Learning Disabilities (3) | First |
| Ed 432 01 | Mainstreaming Exceptional Student(3) | First |
| Ed 450 01 | Introduction to Gifted Education (3) | 7/6-17 |
| Ed 451 01 | Gifted Education: Mathematics (3) | 7/20-31 |
| Ed 460 01 | Computers and Instructional Technology in Classroom (3) | Second |
| Ed 491 SA01 | Instructional Theory into Practice ITIP (3) | 6/15-19 |
| Ed 491 SB01 | Peace-ing It Together (3) | 6/22-26 |
| Ed 491 SC01 | Peaceful Procedures (3) | 7/6-10 |
| Ed 491 SD01 | Catholic School Leadership: Christian Formation (2) | 6/22-26 |
| Ed 491 SE01 | The Shape of Jesus in Our Classrooms (2) | 8/10-14 |
| Ed 491 SF01 | Alcohol and Schools (2) | 7/13-17 |
| Ed 491 SG01 | Alcoholics Anonymous: Recovery As Spiritual Path (1) | 6/25,26 |
| Ed 491 SH01 | The Substitute Teacher (3) | 7/20-31 |
| Ed 491 SI01 | Teaching Science in the Elementary School (3) | 6/22-7/2 |
| Ed 491 SJ01 | Symposium on Alcoholism (3) | 6/22-7/2 |
| Ed 491 SK01 | LOGO and LOGOWriter I (2) | 7/20-31 |
| Ed 491 SL01 | LOGO and LOGOWriter II (2) | 8/3-14 |
| Ed 491 SM01 | Working w/Parents/Professionals (3) | Second |
| Ed 491 SN01 | Japan and the West (5) | 8-week |
| Ed 491 SO01 | Approaches to Romantic Literature(5) | 7-week |
| Ed 491 SP01 | Practical Teaching Strategies in Mathematics and Reading/English (1) | 6/29-7/2 |
| Ed 491 SQ01 | Thinking Skills in the Curriculum (3) | First |
| Ed 491 SR01 | Teaching of Basic Reading/Writing to Out-of-School Non-Readers (2) | 6/5, 6 |
| Ed 497 50 | Independent Study (1-6) | 8-week |
| Ed 500 01 | Introduction to Research and Graduate Study (3) | First |
| Ed 501 01 | Philosophy of Education (3) | Second |
| Ed 507 01 | Principles of Educational Law (3) | First |
| Ed 508 01 | The School Superintendent: Politics and Policy (3) | First |
| Ed 510 01 | Fundamental Counseling Skills (3) | 8-week |
| Ed 511 01 | Counseling Theories (3) | First |
| Ed 512 01 | Career Counseling and Informational Sources (3) | 8-week |
| Ed 515 01 | Multicultures (3) | Second |
| Ed 517 01 | Group Counseling: Theories and Practice (3) | 8-week |
| Ed 521 01 | Adult Psychology/Learning (3) | Second |
| Ed 522 01 | Child Psychology/Learning (3) | Second |
| Ed 523 01 | Adolescent Psychology/Learning (3) | First |
| Ed 524 01 | Seminar in Behavior Disorders (3) | First |
| Ed 526 01 | Reading Practicum Workshop (3) | Arr |

| | | |
|-------------|---|----------|
| Ed 527 01 | Counseling Tests/Measurements (3) | 8-week |
| Ed 532 01 | Field Practicum in Reading (6) | Arr |
| Ed 534 01 | Seminar in Teaching of Reading (3) | First |
| Ed 535 01 | Reading in Content Fields (3) | Second |
| Ed 536 01 | Supervision of Instruction (3) | Second |
| Ed 537 50 | Curriculum Independent Study (1-4) | 8-week |
| Ed 539 01 | Curriculum Graduate Project (3) | 8-week |
| Ed 540 01 | Basics of Curriculum/Instruction (3) | First |
| Ed 543 01 | Corrective Techniques in the Teaching of Reading (3) | Second |
| Ed 544 01 | Seminar: Instructional Effectiveness (3) | Second |
| Ed 545 01 | Special Methods in Mental Retardation (3) | 8/3-14 |
| Ed 546 01 | Seminar in Mental Retardation (3) | 7/6-17 |
| Ed 547 01 | Diagnosis and Prescription (3) | 8-week |
| Ed 550 01 | Creativity/Productive Thinking (3) | 7/20-31 |
| Ed 551 01 | Counseling Practicum (3) | 8-week |
| Ed 555 50 | Practicum: Special Education (3-6) | 8-week |
| Ed 557 50 | Counseling Independent Study (1-3) | 8-week |
| Ed 560 01 | Family Counseling (3) | 8-week |
| Ed 561 SA01 | Continuing Certification for Counselors (3) | First |
| Ed 561 SB01 | Family Counseling Practicum (3) | 8-week |
| Ed 561 SC01 | Finance in Higher Education (3) | First |
| Ed 561 SD01 | Qualitative Evaluation and Teacher Performance (2) | 7/20-24 |
| Ed 562 SA01 | The American Community College (3) | First |
| Ed 563 01 | Seminar in Reading Research (3) | Second |
| Ed 564 01 | Counseling Internship I (4) | 8-week |
| Ed 565 01 | Counseling Internship II (4) | 8-week |
| Ed 566 01 | Counseling Internship III (3) | 8-week |
| Ed 581 01 | Fundamentals of Administration (3) | First |
| Ed 583 01 | School Finance (3) | Second |
| Ed 584 01 | Washington School Law (3) | Second |
| Ed 586 01 | Professional Personnel (3) | Second |
| Ed 590 01 | Administrative Internship I (3) | 8-week |
| Ed 591 01 | Administrative Internship II (3) | 8-week |
| Ed 592 01 | Administrative Internship III (3) | 8-week |
| Ed 593 01 | School Business Administration (3) | Second |
| Ed 596 01 | Administrative Graduate Project (3) | 8-week |
| Ed 597 50 | Administrative Independent Study (1-3) | 8-week |
| Ed 600 01 | Workshop-Educational Leadership (9) | 7/13-8/7 |
| Ed 604 01 | Workshop in Organizational Development and Change (3) | First |
| Ed 605 50 | Independent Study in Educational Leadership (1-5) | 8-week |
| Ed 606 50 | Independent Study in Educational Leadership (1-5) | 8-week |
| Ed 607 50 | Independent Study in Educational Leadership (1-5) | 8-week |
| Ed 608 50 | Internship in Educational Leadership (1-9) | 8-week |
| Ed 610 50 | Doctoral Project Educational Leadership (1-14) | 8-week |
| Ed 613 01 | Project Continuation (0) | 8-week |
| Ed 649 01 | Doctoral Enrollment (0) | Arr |

Engineering, Mechanical

| | | |
|------------|-----------------------|--------|
| EML 210 01 | Statics (5) | 8-week |
| EML 230 01 | Dynamics (5) | 8-week |
| EML 350 01 | Materials Science (5) | 8-week |

SUMMARY OF 1987 SUMMER SCHOOL CLASSES

English

| | | |
|-------------|---|--------|
| En 110 01 | Freshman English (5) | 7-week |
| En 132 01 | American Literature (5) | 7-week |
| En 175 01 | Introduction to Literature (5) | 7-week |
| En 291 SA01 | G.K.Chesterton and C.S.Lewis: Literature of Religion/Romance (5) | 7-week |
| En 391 SA01 | G.K.Chesterton and C.S.Lewis: Literature of Religion/Romance (5) | 7-week |
| En 391 SB01 | Autobiographies: Narrative Modes of Self-Presentation (5) | 8-week |
| En 391 SC01 | Religious Experience in Autobiography and Story (5) | 7-week |
| En 391 SD01 | Japan and the West (5) | 8-week |
| En 488 01 | Film and Literature (5) | 7-week |
| En 491 SA01 | Approaches to Romantic Literature (5) | 7-week |

Fine Arts

Art

| | | |
|--------------|--------------------------|--------|
| Art 491 SA01 | Japanese Calligraphy (2) | Second |
|--------------|--------------------------|--------|

Drama

| | | |
|-------------|--------------------|--------|
| Dr 491 SA01 | Video Profiles (5) | Second |
|-------------|--------------------|--------|

Music

| | | |
|-----------|---------------------------------|--------|
| Mu 110 50 | Piano Lessons (1-2) | 7-week |
| Mu 111 50 | Voice Lessons (1-2) | 7-week |
| Mu 123 50 | Classic Guitar Lessons (1-2) | 7-week |
| Mu 125 50 | Organ/Harpsichord Lessons (1-2) | 7-week |
| Mu 310 50 | Piano Lessons (1-2) | 7-week |
| Mu 311 50 | Voice Lessons (1-2) | 7-week |

Foreign Languages

| | | |
|-------------|----------------------------------|--------|
| Fr 115 01 | French Language I, II, III (15) | 8-week |
| Fr 125 01 | | |
| Fr 135 01 | | |
| Sp 115 01 | Spanish Language I, II, III (15) | 8-week |
| Sp 125 01 | | |
| Sp 135 01 | | |
| Fl 191 SA01 | Introduction to Japanese (5) | 8-week |

General Science

| | | |
|--------------|---------------------------|--------|
| ISC 291 SA01 | Principles of Geology (5) | 8-week |
|--------------|---------------------------|--------|

History

| | | |
|-------------|---|--------|
| Hs 104 01 | Western Civilization I (5) | 7-week |
| Hs 105 01 | Western Civilization II (5) | 7-week |
| Hs 281 01 | Survey of Far East (5) | 7-week |
| Hs 315 01 | 20th Century Europe (5) | 7-week |
| Hs 341 01 | Pacific Northwest (5) | 7-week |
| Hs 492 SA01 | Leadership in History: Orient and West (5) | Arr |
| Hs 497 50 | Independent Study (1-5) | Arr |

Institute for Theological Studies

Graduate Courses (ITS formerly CORPUS)

| | | |
|------------|---------------------------------|-----------|
| ITS 506 01 | Christian Ethics (3) | 6/22-7/18 |
| ITS 539 01 | Contemporary Ethical Issues (3) | 6/22-7/18 |
| ITS 596 50 | Independent Study (3-6) | Arr |
| ITS 597 50 | Independent Study (3-6) | Arr |
| ITS 599 50 | Graduate Project (3-6) | Arr |

SUMORE

| | | |
|---------------|-------------------------------------|----------|
| ITSS 502 01 | Theologies of the New Testament (3) | 7/6-17 |
| ITSS 503 01 | Christian Anthropology (3) | 7/20-31 |
| ITSS 504 01 | Christology (3) | 6/23-7/3 |
| ITSS 505 01 | The Church As Community (3) | 8/3-14 |
| ITSS 506 01 | Christian Ethics (3) | 8/3-14 |
| ITSS 510 01 | Christian Self Image (3) | 6/23-7/3 |
| ITSS 512 01 | Liturgy and Worship (2) | 7/6-16 |
| ITSS 516 01 | Spiritual Direction (2) | 7/20-31 |
| ITSS 522 01 | Justice Ministry (3) | 7/20-31 |
| ITSS 532 01 | Theories of Religious Education (3) | 7/20-31 |
| ITSS 552 01 | Interpersonal Process (2) | 6/23-7/3 |
| ITSS 553 01 | Conflict Resolution (2) | 6/23-7/3 |
| ITSS 554 01 | Leadership and Organization (2) | 6/29-7/9 |
| ITSS 556 01 | Pastoral Counseling (3) | 7/6-17 |
| ITSS 556 02 | Pastoral Counseling (3) | 7/6-17 |
| ITSS 556 03 | Pastoral Counseling (3) | 7/6-17 |
| ITSS 556 04 | Pastoral Counseling (3) | 7/6-17 |
| ITSS 580 01 | Completion Project (3) | Arr |
| ITSS 587 01 | Practicum I (2) | 7/20-31 |
| ITSS 588 01 | Practicum II (2) | 7/6-17 |
| ITSS 591 SA01 | Spirituality (2) | 7/20-30 |
| ITSS 596 50 | Independent Study (1-6) | Arr |

Mathematics

| | | |
|-----------|--------------------------------------|--------|
| Mt 118 01 | College Algebra for Business (5) | 7-week |
| Mt 130 01 | Elements of Calculus for Business(5) | 7-week |
| Mt 136 01 | Calculus, Analytic Geometry III (5) | 7-week |
| Mt 222 01 | Discrete Structures (5) | 7-week |
| Mt 232 01 | Multivariable Calculus (3) | 7-week |
| Mt 233 01 | Linear Algebra (3) | 7-week |

Military Science

| | | |
|-----------|---------------------------|-----|
| MS 314 01 | Advanced Camp (4) | Arr |
| MS 315 01 | Advanced Camp-Nursing (4) | Arr |

Philosophy

| | | |
|-----------|---|--------|
| PI 110 01 | Philosophical Problems: World (5) | 7-week |
| PI 110 02 | Philosophical Problems: World (5) | 7-week |
| PI 110 03 | Philosophical Problems: World (5) | 8-week |
| PI 220 01 | Philosophical Problems: the Human Person (5) | 7-week |
| PI 220 02 | Philosophical Problems: the Human Person (5) | 7-week |
| PI 220 03 | Philosophical Problems: the Human Person (5) | 7-week |
| PI 220 04 | Philosophical Problems: the Human Person (5) | 8-week |

SUMMARY OF 1987 SUMMER SCHOOL CLASSES

| | | |
|-------------|-------------------------------------|--------|
| PI 250 01 | Ethics (5) | 7-week |
| PI 250 02 | Ethics (5) | 7-week |
| PI 255 01 | Medical Ethics (5) | 7-week |
| PI 260 01 | Logic I (5) | 7-week |
| PI 324 01 | Philosophy of Religion (5) | 7-week |
| PI 337 01 | Social and Political Philosophy (5) | 7-week |
| PI 493 SA01 | Phenomenology of Loving (5) | 7-week |
| PI 497 50 | Independent Study (1-5) | Arr |

Physics

| | | |
|-----------|--------------------------------------|--------|
| Ph 110 01 | Astronomy of the Solar System (5) | 7-week |
| Ph 200 01 | Mechanics (5) | 8-week |
| Ph 201 01 | Electricity and Magnetism (5) | 8-week |
| Ph 202 01 | Waves, Optics and Thermodynamics (5) | 8-week |

Political Science

| | | |
|--------------|--|--------|
| Pls 100 01 | American National Government (5) | 7-week |
| Pls 260 01 | Introduction to International Politics (5) | 7-week |
| Pls 330 01 | Soviet Union (5) | 7-week |
| Pls 491 SA01 | African Politics (5) | 7-week |

Psychology

| | | |
|--------------|--|----------|
| Psy 201 01 | Statistics (5) | 7-week |
| Psy 315 01 | Abnormal Psychology (5) | 7-week |
| Psy 322 01 | Psychology of Growth/Development (5) | 7-week |
| Psy 427 01 | Introduction to Counseling (5) | 7-week |
| Psy 461 01 | Theory of Group Dynamics (2) | 7-week |
| Psy 462 01 | Experience of Group Dynamics (3) | 7-week |
| Psy 490 01 | Symposium on Alcoholism (3) | 6/22-7/2 |
| Psy 491 SA01 | Alcoholics Anonymous: Recovery as Spiritual Path (1) | 6/25,26 |
| Psy 496 50 | Independent Study (2-5) | Arr |
| Psy 543 01 | Basic Practicum in Therapeutic Psychology (6) | 8-week |
| Psy 596 50 | Independent Study (1-3) | Arr |

Public Service

| | | |
|--------------|---|----------|
| Pub 349 01 | Collective Bargaining (5) | 8-week |
| Pub 495 50 | Internship (2-5) | 8-week |
| Pub 497 50 | Independent Study (1-5) | Arr |
| Pub 498 50 | Independent Study (1-5) | Arr |
| Pub 512 01 | The Implementation Process (3) | 8-week |
| Pub 562 01 | Oral Communication for Administrators (3) | 8-week |
| Pub 585 01 | Management of Change (3) | 7/24-8/8 |
| Pub 586 01 | Thesis Preparation (1) | Arr |
| Pub 588 01 | Thesis Preparation (1) | Arr |
| Pub 592 SA01 | Human Services: Changing Delivery Systems (3) | 8-week |
| Pub 595 50 | Internship (1-3) | Arr |
| Pub 597 50 | Independent Study (1-5) | Arr |
| Pub 598 50 | Independent Study (1-5) | Arr |

Rehabilitation

| | | |
|--------------|-------------------------------------|--------|
| Rhb 210 01 | Field Experience (5) | Arr |
| Rhb 310 01 | Field Experience (5) | Arr |
| Rhb 410 50 | Field Experience (5-20) | Arr |
| Rhb 493 SA01 | Ethics in Rehabilitation (3) | 7-week |
| Rhb 520 01 | Group Process in Rehabilitation (3) | 8-week |
| Rhb 525 01 | Loss and Grief (3) | First |
| Rhb 530 01 | Practicum in Rehabilitation (3) | Arr |
| Rhb 531 01 | Practicum in Rehabilitation (3) | Arr |
| Rhb 532 01 | Practicum in Rehabilitation (3) | Arr |
| Rhb 580 50 | Internship in Rehabilitation (1-6) | Arr |

Sociology

| | | |
|-------------|--|--------|
| Sc 101 01 | Fundamentals of Sociology (5) | 8-week |
| CS 491 SA01 | The Crisis of Suicide (5) | First |
| CS 492 SA01 | Social Work in Minority Ethnic Communities (5) | 7-week |

Speech

| | | |
|--------------|---|--------|
| Sph 200 01 | Interpersonal Communication (5) | Second |
| Sph 391 SA01 | Autobiographies: Narrative Modes of Self-Presentation (5) | 8-week |

SUMORE

See Institute for Theological Studies

Theology and Religious Studies

Undergraduate Courses

| | | |
|-------------|---|--------|
| RS 200 01 | Judaeo-Christian Origins (5) | 7-week |
| RS 211 01 | The Gospel of Jesus Christ (5) | Second |
| RS 263 01 | Religious Experience: East, West (5) | 7-week |
| RS 293 SA01 | Religious Experience in Autobiography and Story (5) | 7-week |
| RS 310 01 | Christ for Our Times (5) | 7-week |
| RS 338 01 | Christian Views of Love, Sex, and Marriage (5) | 7-week |
| RS 393 SA01 | Women in Western Religions (5) | 7-week |



OF SPECIAL INTEREST

Alcohol Studies Program

During Summer Session the Alcohol Studies Program seeks to accommodate regular Certificate students and also offer special short-term courses designed for out-of-town students who are in Seattle for a limited time.

Alcohol and Schools

Ed 491 SF01 or Alc 492 SA01, July 13-17, Daily, 9:00 a.m.-3:00 p.m., 2 credits

The special problems of adolescence and drug use in the school setting will be discussed. The special roles that can be played by teachers, principals, counselors, and nurses will be presented. Issues of prevention, treatment and follow-up support groups will be addressed. This course is recommended for all professional educators and concerned parents.

Adult Children of Alcoholics

Alc 491 SF01, 8-week, Tuesday, 7:00-9:30 p.m., 2 credits

The ACOA movement will be explored. Characteristics of adult children of alcoholics will be presented in order to understand the problems observed in this population. Risks for alcoholism and other addictive diseases will be explored. Emphasis on therapy: when and where it is appropriate. Prerequisites: Alc 402 and 403.

Symposium on Alcoholism

Alc 400 01, June 22-July 2, Daily, 9:00 a.m.-4:00 p.m., 3 credits

This annual symposium will place special emphasis on spirituality and recovery. Guest lecturers will discuss the special role that spiritual paths play in recovery from alcoholism and other addiction. Also offered under Ed 491 SJ01 and Psy 490.

Alcoholics Anonymous: Recovery As a Spiritual Path

Alc 491 SA01, June 25,26, 11:00 a.m.-4:00 p.m., 1 credit

Dr. Ernest Kurtz, noted historian and author, will discuss the history of Alcoholics Anonymous and the emergence of spiritual models for recovery from alcoholism. History, Steps, traditions. Philosophy and psychology of the 12 Steps. Role in recovery. Prerequisite: Alc 400 or permission of Director. Also offered under Ed 491 SG01 and Psy 491 SA01.

G.K.Chesterton and C.S.Lewis: Literature of Religion and Romance

En 291 SA01 (En 391 SA01), 7-week, 5 credits

The novel, poetry, literary history, social commentary, apologetics and fantasy from the voluminous writings of these two popular 20th century authors. Students will participate in a conference and hear and meet some of the most important Chesterton and Lewis scholars in America, Canada, and Europe.

Introduction to Japanese

Fl 191 SA01, 8-week, TTh, 5:30-8:00 p.m., 5 credits

This class is especially valuable for travellers to Japan, people with Japanese business contacts, or students desiring basic conversational skills. The textbook, language tape, and in-class instruction are designed to give the student basic skills in simple conversation, as well as in reading and writing phonetic Hiragana.

Japan and the West

Ed 491 SN01, 8-week, MW, 5:30-8:00 p.m., 5 credits

An interdisciplinary study of the Japanese culture, its values, habits of thought, and fundamental assumptions about reality as seen in its cultural products, including language and literature, fine arts, pop culture, business structures, and social institutions. Guest lecturers, Japanese and American. Of interest to anyone wanting to learn about the Japanese culture, or anyone planning to deal directly with Japanese people or institutions. Also offered under En 391 SD01 and Bus 391 SA01.

OF SPECIAL INTEREST



Introduction to Computers and Applications

CSC 103 01, 8-week, Daily, 8:00-9:00 a.m., 5 credits

Introduction to computers and the use of microcomputers in wordprocessing, spread-sheets and database application. No prior experience with computers is required or assumed.

African Politics

Pls 491 SA01, 7-week, 5 credits

Seminar format. Discussion of history of colonialism, the slave trade, roots of underdevelopment, various development strategies, African socialism, military coups, and the one-party system. Special section on South Africa.

Medical Ethics

Pl 255 01, 7-week, 5 credits

Application of general ethical theory of basic problems encountered in the medical profession: fees, professional secrecy, right of patients, abortion, transplants, drugs.

Phenomenology of Loving

Pl 493 SA01, 7-week, 5 credits

A phenomenological analysis of the "yes" of loving and its creativity relative to the freedom, forgiveness, sexuality, and death of self and beloved.

Autobiographies:

Narrative Modes of Self-Presentation

Sph 391 SA01 (En 391 SB01), 8-week, 5:30-8:00 p.m., 5 credits

Examine autobiographies as literary and personal statements. Class discussions will center on three modes of self-presentation: historical self expression, philosophical self analysis, and poetic self expression.

Principles of Geology

ISC 291 SA01, 8-week, 5 credits

Study of the principles of modern geology with consideration of both the physical and historical aspects. Topics will include modern Plate theory, tectonics, uniform processes, and the Fossil Record. Arranged field trips on weekends.

Social Work in Minority Ethnic Communities

CS 492 SA01, 7-week, 5 credits

A practice-oriented course designed to explore the implementation of service programs in varied cultural settings, viewing cultural values as tools for helping rather than as obstacles to understanding. Examination of ethnological basis for designing helping interventions. Major term project in ethnic community required.

Polygraph

CJP 291 SA01, 7-week, 5 credits

An introduction to the science of polygraphy—including the history, validity, and reliability; use in courts and ethics.

Education — Special Programs

Qualitative Education and Teacher Performance

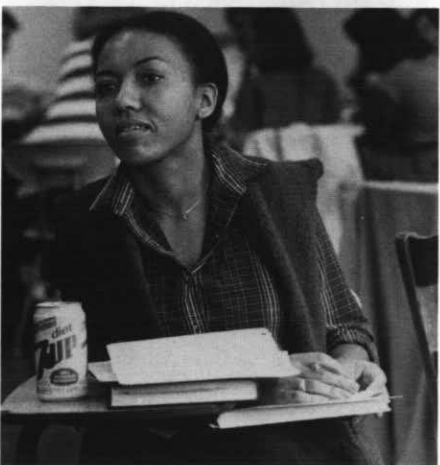
Ed 561 SD01, July 20-24, 9:00 a.m.-1:00 p.m., 2 credits

Elliott Eisner, Professor of Education and Art at Stanford University, will present four sessions appropriate for administrators and teachers. University credit optional.

Teaching of Basic Reading/Writing to Out-of-School Non-Readers

Ed 491 SR01, June 5 and 6, 2 credits

In addition to 12 contact hours for training, 15 hours of tutoring at selected sites will be required over five weeks, to be completed before August 7. Course includes introduction to Laubach Literacy and Literacy Volunteers of America materials, Learning Disabilities and Learning Styles, Language Experience, Phonics, Sight-reading, Word Patterns, and supervised tutoring.

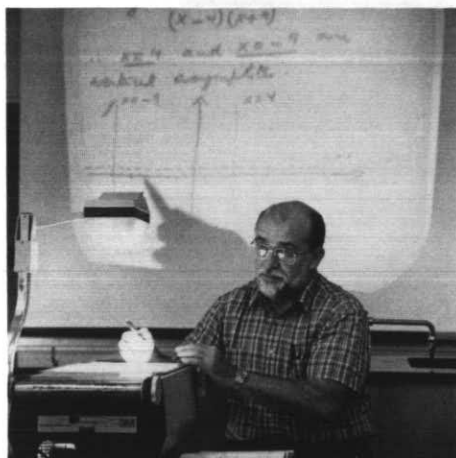




CONTINUING EDUCATION

Non-Credit Programs for all ages

For further information on the programs listed below, write to:
Continuing Education Department, Seattle University,
Seattle, WA 98122 or call (206) 626-6626.



Musical Theatre Workshop—All ages, 12 and over

Three-Week Workshop—August 3 to 21

Daily, 10:00 a.m.-12:00 p.m.

Beginning and advanced musical theatre techniques—vocal, dance, and movement. A musical review will be presented at the end of the three-week workshop.

Instructors: Robert Cooper and Ralph McCoy

Tuition: \$65.00 for the three-week workshop

Elderaudit...for persons 60 and over

Elders may audit classes for \$35.00 per class on a space-available basis with permission of instructor. For details contact the Continuing Education Department.

Elderhostel...for persons 60 and over

Seattle University is a participant in this major educational movement. Seven one-week, low-cost residential academic programs will be offered on campus, beginning June 22. REGISTRATION THROUGH BOSTON OFFICE ONLY. Write to: ELDER-HOSTEL, 80 Boylston St., Suite 400, Boston, MA 02116.

Spaces are reserved each week for commuters, but number is limited. Contact the Continuing Education Department for further information.



Seattle University Alumni Audit

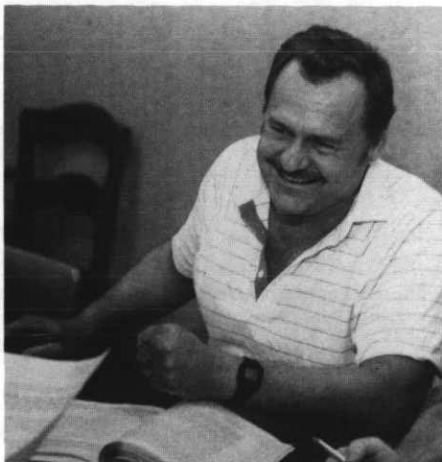
Undergraduate classes are open for non-academic audit to Seattle University alumni at \$35.00 per class. The following restrictions apply: 1) student may not be currently enrolled as a regular student at Seattle University; 2) no credit will be given nor academic record maintained; 3) classes offered for alumni audit are open on a space available basis. The requirements for work and class participation are at the discretion of each instructor. Fees and applications for summer alumni audit must be received at the Office of Alumni Relations no later than June 26, the fifth day of class. No refunds will be made after that date. For further information write to Office of Alumni Relations, Seattle University, Seattle, WA 98122, or call (206) 626-5656.

Seattle University Adult Literacy Project If you can read this, you can help.

Seattle University's Adult Literacy Project uses volunteer tutors in one-to-one sessions twice a week. Anyone who can read can teach someone else to read, using materials and learning centers located throughout our area. It is possible for 'graduates' of this method ("The Laubach Way to Reading") to achieve a fifth-grade reading and writing level in a relatively short period of time; but only with the help of volunteers. For further information call Olivia at the Office of Continuing Education, 626-6626.



ACADEMIC INFORMATION



Admission—Those who wish to be regular students and obtain regular academic credit during the Summer Quarter must make formal application to the University. Application forms may be obtained from the Admissions Office or you may use the form at the back of this Bulletin. Applications and transcripts must be on file by June 12.



Readmission—Former students not enrolled at the University for the Spring Quarter must apply for readmission if they wish to attend the Summer Quarter. Graduates who have not attended since receiving their degrees will be readmitted as fifth year students unless pursuing a Master's or Doctoral degree, in which case the student must file for admission to Graduate School. Applications and supporting documents should be on file by June 18.

Registration—Two registration options are offered: advance registration April 20-24, or registration immediately preceding the session/term. (See registration dates on page 3.) These registration options are open to students continuing from Spring term and to new and readmitted students. New and readmitted students, however, may not register until they have filed for admission and obtained mail confirmation of approval to register.

Auditor—Admission as an auditor must be requested through the Admissions Office and be approved by the dean of the school and the instructor of the course. An auditor will not be required to participate in class discussion or laboratory work. Assignments are at the discretion of the instructor.



Graduate Courses—Restrictions: Enrollment in graduate courses (500-699) is restricted to those holding status of "graduate student": (Level=G1 or G3) which indicates full admission to the Graduate School to pursue a Master's or Doctoral Program. Students holding 5th year status (Level=5Y) are not eligible to enroll in courses numbered 500-699 without permission of the Dean of the Graduate School.

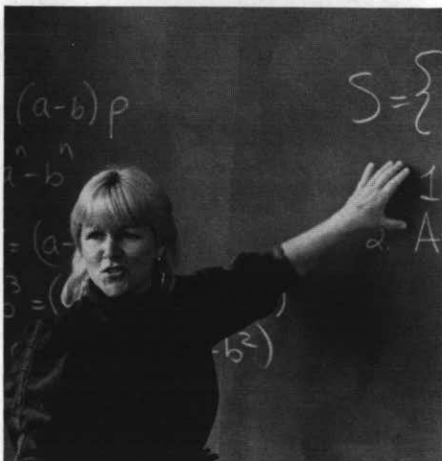
Summer Graduate Course Load—For Graduate students attending the entire eight-week session, a maximum load will ordinarily be 12 credits. In special circumstances, and with the permission of the chair, a student may register for a total of 15 credits over this period. This is especially appropriate if the additional three credits are research or independent study which will not be completed in the summer time frame. In the case of SUMORE students, the limit will be 16 credits since this group begins course preparation and readings well in advance of summer session.

For graduate students attending a four-week session, a maximum load will ordinarily be six credits. In special circumstances and with permission of the chair, a student may register for a total of nine credits over this period.

International Students—Specific admission requirements and procedures for all international students are listed on the University's international student application form. These criteria differ from those applied to United States citizens. Direct inquiries to Admissions Office.

Undergraduate Credit—A full quarter's credit (15 hours) may be earned during the summer.

Records—The policy of Seattle University on the right of students' access to their educational records and on confidentiality of information conforms to current public law. The full statement of policy is available for inspection in the Office of the Vice President for Academic Affairs or the Registrar.





REGISTRATION

Advance Registration — April 20-24

Continuing students do not require clearance for advance registration; the procedure is simply to prepare a program of study approved by an adviser during the April 20-24 period, and to present the signed form at the Registrar's Office during regular office hours. A fee statement will be mailed after the close of advance registration.

New and readmitted students who obtain mail notification approval to register before April 17 will follow the same procedures as continuing students.

- Consult with department adviser and prepare a program of study on the schedule form. Advisers will be available during registration hours.
- Present the approved schedule form at the Registrar's Office during regular hours, 8:30 a.m. to 4:00 p.m., through April 24 and until 7:00 p.m. the evenings of April 20 and 21. You will be registered at the Registrar's Office.
- Pay tuition and fees to the Controller during regular office hours, or by mail through June 22.

Registration

Continuing, new, and readmitted students who do not advance register may register on June 19 and June 22 by presenting an adviser-approved schedule form to the Registrar during regular office hours, or from 4:00 to 7:00 p.m. on June 22. Those who do not register by 4:00 p.m. on Friday, June 19, may register the first day of class (June 22). New and readmitted students register between 8:30 a.m.-12:00 noon; continuing students will register between 2:00-7:00 p.m.

Course Changes—Additions and drops for full and first term courses are permitted June 19 to June 26. No program changes may occur after June 26. Drops and additions for short term classes are permitted only for the first two class days of these classes.

Withdrawal—The Registrar's Office must be officially notified when a student withdraws from one or more of his/her courses. See the calendar for withdrawal closing dates for full and short term courses. After closing dates no withdrawals are permitted, and a grade of E or NC will be assigned.

Grades—will be mailed to all students within two weeks of the end of Summer Quarter.

Library Hours

Summer library hours for the A.A.Lemieux Library will be from 8:00 a.m. to 10:30 p.m. Monday through Thursday; Friday from 8:00 a.m. to 5:00 p.m.; Saturday from 11:00 a.m. to 5:00 p.m.; and Sunday from 1:00 p.m. to 10:30 p.m. The reading room on the first floor will be open every day from 7:00 a.m. to midnight. Holiday hours will be posted during the quarter. The library reserves the right to adjust the posted times as necessary.

Book Store

The Book Store is your source for all required textbooks and course related supplies. In addition, it offers a complete selection of general paperback books and reference books. The store features a wide selection of sweatshirts, T-shirts, and gift items with Seattle University imprinting. Other selections include greeting cards, snack foods, and sundries. You may special order any book not in stock, leave your film for processing, and sell your used books at the end of the quarter. If you have any questions, call (206) 626-5925.



FINANCIAL INFORMATION

Tuition and Fees

POLICY — Tuition Payment

Students registering for classes during the advance registration period from April 20 through April 24 may either pick up their statements in person or may receive them in the mail after April 24. Students registering (or add/drop) after April 24 are expected to pick up their statement the same day at the Controller's Office.

Payment of tuition and fees includes library and health service fees, student activities, and building fund. After a student registers for a course, the University has committed a space in each course for each student. It is the student's responsibility to pay for all fees in full whether the student attends the course(s) or not. Tuition and fee payment for either the Full or First session are due on or before June 22, 1987—the day classes begin for Summer School. Tuition and fee payments for short courses are due on the first day of the short course. Payments made after that time are subject to the late registration/late payment policies.

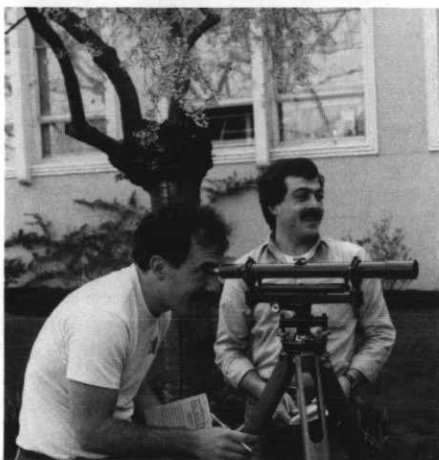
Failure to pay in full all tuition and fees of any quarter or session may result in a hold on the student's transcript and may prevent registration in subsequent quarters.

To avoid lines for payment, students are encouraged to pay tuition and fees by mail. Checks should be made payable to Seattle University and mailed to: Seattle University, P.O.Box 84107, Seattle, WA 98124-5407, or delivered in person to the Controller's Office. Date of payment is determined by the date postmarked or by payment in person.

POLICY—Late Registration/Late Payment

Late registration fees of \$10 per day to a maximum of \$80 are charged if tuition and fees are not paid in full according to the session you are attending (see Policy-Tuition Payment for more detail). Late registration/late payment fees shall apply to all checks not honored by banks and returned to Seattle University.

Although Seattle University reserves the right to change its charges at any time without prior notice, after the beginning of a quarter no change will be made effective for that quarter.



Undergraduate courses
— per credit hour \$148.00

Undergraduate Education Courses
— per credit hour 110.00

Masters Programs — per credit hour
Business 189.00
Education 110.00
ITS (Corpus) 148.00
ITSS (SUMORE) 110.00
Psychology 161.00
Public Administration .. 161.00
Rehabilitation 161.00
Software Engineering ... 189.00

Educational Specialist Programs —
per credit hour 110.00

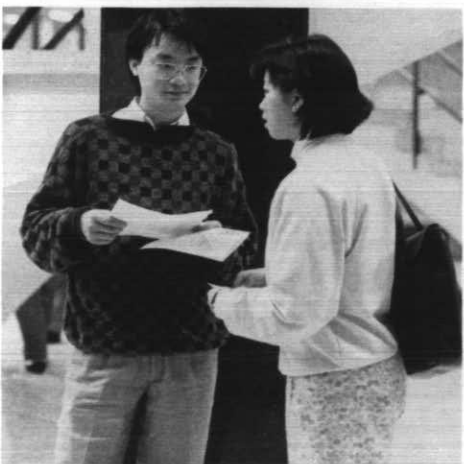
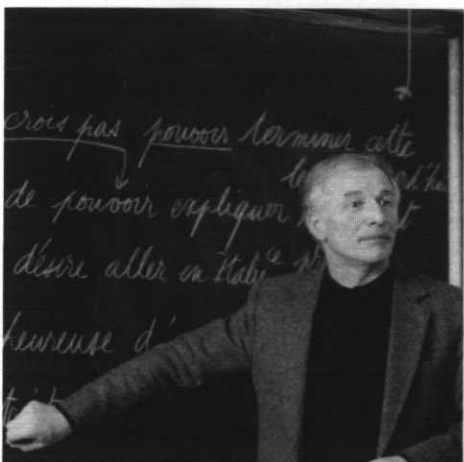
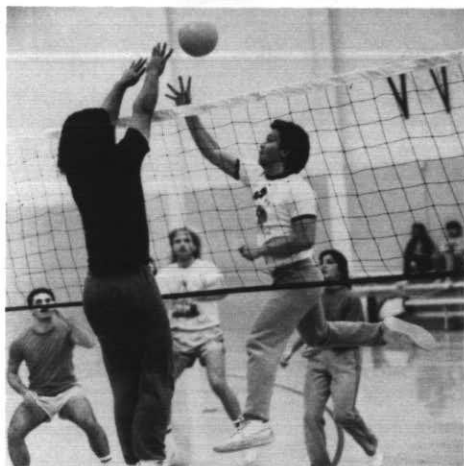
Doctoral Program —
per credit hour 189.00

Certificate Programs —
per credit hour
Alcohol/Drug Studies ... 110.00
Applied Sociology 148.00

Health Information 148.00
Rehabilitation 148.00

Audit (undergraduate courses only)
per credit hour 47.00

Occasional Fees (non-refundable)
Application, undergraduate and graduate 15.00
Application, transient students 15.00
Late registration (maximum \$80), per day \$10.00
Matriculation, undergraduate and graduate \$45.00
Credit by examination .. \$40.00
Validation of field experience (per credit hour) \$40.00
Removal of incomplete (per credit hour) \$15.00
Graduation, undergraduate (per degree) \$45.00



FINANCIAL INFORMATION

Graduation, graduate
(per degree) \$65.00

Graduation fees are due at the time of application for graduation, and graduation forms will be released only upon presentation of a receipt.

Certificate fee \$30.00
Vocal or instrumental lessons
(per credit hour) \$148.00

For laboratory fees and other occasional fees, consult the 1986-87 Seattle University Bulletin of Information, page 16.

Refunds

Refunds are based on the number of class days, defined as consecutive Mondays through Fridays, beginning the first day of class for each session. The refund policy applies to complete withdrawals or reduction in class load. The official date of withdrawal from a course is considered to be the date a student submits the withdrawal or change form to the Registrar. A refund to a financial aid recipient is applied first to the student's financial aid source(s) and the balance, if any, is remitted to the student. Financial Aid recipients will, therefore, in all likelihood, not receive refunds.

If the tuition and/or fees have not yet been paid, the portion normally not refunded is due and payable together with the late fee. Failure to pay the non-refundable tuition and fees may result in transcript holds and may prevent registration in subsequent quarters.

Withdrawal (full or partial) Full 7-week or 8-week Session:
First class day 100%
2nd through 7th class day 80%
8th through 12th class day 60%
13th through 15th class day 40%
Thereafter No refund

Half Session:
First class day 100%
2nd through 5th class day 70%
6th through 10th class day 35%
Thereafter No refund
Shorter Sessions No refund

Financial Aid

During Summer Quarter, loans and Work-Study employment are available. Students desiring long-term loans must apply for a Guaranteed Student Loan approximately eight weeks prior to registration to insure the availability of funds when tuition is due on registration day.

Students who have established Work-Study eligibility for the preceding academic year may continue to utilize that eligibility through June 30, 1987. Students who have Work-Study eligibility for the 1987-88 academic year are eligible for Work-Study jobs during the summer.

For specific information, contact the Financial Aid Office, Seattle University, Seattle, WA 98122. Phone: (206) 626-5462.

The Career Development Center maintains a listing of both on and off-campus jobs. Phone: (206) 626-6235.



Housing

Residential Living

Bellarmino Hall will be open for single student housing during all summer sessions. The hall will be open on June 21 at 9:00 a.m. and will close on August 15 at 12:noon. Contact the Resident Student Services Office, (206) 626-5920, for more information or applications for housing. Admission to Seattle University does not automatically guarantee room reservations. Applications for student housing must be made through the Resident Student Services Office. No deposit is required.



Food Service

Students must purchase a meal plan in order to live on campus. Four meal plans are offered, all meals being served in the Marketplace in Bellarmine Hall. Meals begin with breakfast on June 22, and end with dinner on August 14. The rate reflected in room and board charges is for Plan A (the highest meal plan).

Private Rooms

Requests for private rooms will be taken, but not guaranteed, until June 15. The cost of a private room is an additional \$168.00 for the 8-week session and is prorated for shorter terms.



Checkout

Students must check out no later than 24 hours after their last final exam.

Room and Board Rates

| | |
|--|----------|
| First Term: June 22-July 17 | \$461.00 |
| Second Term: July 20-August 14 | \$461.00 |
| Full 7-Week Session: June 22-August 7 | \$806.00 |
| Full 8-Week Session: June 22-August 14 | \$921.00 |

Parking

All parking on campus is authorized by the display of a valid Seattle University parking permit. Parking permits may be purchased at the Controller's Office in Campion. The permits are then issued in the Safety and Security Services office which is located at the Seaport Building, across 12th Avenue at 1215 E. Columbia. **However, on June 19 and 22 between the hours of 8 a.m. and 4:30 p.m. permits may be paid for at the point of issue.** Disabled parking spaces are available in most parking areas. A Seattle University disabled parking permit must be displayed when parking in these designated areas. All parking areas are signed and clearly state which areas are restricted, reserved, or otherwise regulated. Campus maps, parking information, and other Security related information is available at Safety and Security Services at 626-5356.



Equal Opportunity—Seattle University offers the opportunities and experiences of higher education to all students equally without regard to race, religion, age, sex, or national origin. It does so in keeping with the guidelines and requirements of laws and regulations as promulgated by state and federal agencies.

CLASSES

| Course/Section | Description/Credit Session/Time | Instructor Building/Room |
|----------------|---------------------------------|--------------------------|
|----------------|---------------------------------|--------------------------|

Schedule

Seattle University reserves the right to cancel any class without prior notice.

Seven-week classes are scheduled for 70-minute blocks and extend from June 22-August 7.

Eight-week classes are scheduled for 60-minute blocks and extend from June 22-August 14.

The first 4-week term will extend from June 22-July 17.

The second 4-week term will extend from July 20-August 14.

Dates of short courses listed under course descriptions.

All courses offered after 4 pm are highlighted in the schedule with this color bar.

Building Code

| | | | |
|----|----------------------|-----|-----------------------|
| Ba | Bannan Building | GEL | Gene E. Lynn Building |
| Bu | Buhr Hall | LA | Liberal Arts Building |
| Ca | Campion Tower | LL | Lemieux Library |
| CC | Connolly Center | M | Marian Hall |
| E | Engineering Building | NOC | Not On Campus |
| Ga | Garrard Building | P | Pigott Building |

Alcohol Studies

Short Courses

| | | |
|------------|--|---------------------------------|
| Alc 400 01 | Symposium on Alcoholism (3) June 22-July 2, Daily, 9:00 a.m.-4:00 p.m. | Schnell/Royce Kurtz P 401 |
|------------|--|---------------------------------|

Survey on alcoholism with special emphasis on spirituality. Alcoholism: nature, causes, diagnosis, prevention and recovery. Spiritual programs for recovery. Also offered under Psy 490 and Ed 491 SJ01.

| | | |
|------------|--|-------------------|
| Alc 413 01 | Alcoholism Schools Workshop (2) July 6-10, Daily, 9:00 a.m.-3:00 p.m. | Marshall P 401 |
|------------|--|-------------------|

How to teach Alcohol Information (AIS) and DWI Schools. Prerequisite: Alc 400 or permission of Director.

| | | |
|------------|--|------------------------|
| Alc 422 01 | Alcoholics Anonymous As a Resource for Professionals (2) July 6-17, Daily, 4:00-5:50 p.m. | Royce/Schnell P 405 |
|------------|--|------------------------|

History, Steps, Traditions. Philosophy and psychology of the 12 Steps. Role in recovery. Prerequisite: Alc 400 or permission of Director.

| | | |
|--------------|---|----------------|
| Alc 491 SA01 | Alcoholics Anonymous: Recovery As Spiritual Path (1) June 25-26, Daily, 11:00 a.m.-4:00 p.m. | Kurtz P 401 |
|--------------|---|----------------|

History and evolution of A.A. as a model for a spiritual path for recovery from addiction. Will meet with Alc 400. Prerequisite: Alc 400 or permission of Director. Also offered under Ed 491 SG01 and Psy 491 SA01.

| | | |
|--------------|---|----------------|
| Alc 491 SB01 | Prevention Programs (2) June 22-July 2, Daily, 4:00-6:30 p.m. | Thorn P 453 |
|--------------|---|----------------|

Exploration of educational programs for prevention of use, abuse, and addiction. Initiating and implementing community and school programs. Prerequisite: Alc 400 or permission of Director.

| Course/Section | Description/Credit Session/Time | Instructor Building/Room |
|----------------|---------------------------------|--------------------------|
|----------------|---------------------------------|--------------------------|

| | | |
|--------------|--|---------------------------|
| Alc 491 SC01 | Grief and Loss (1) July 20-24, Daily, 4:00-5:50 p.m. | Madsen-Sundquist P 405 |
|--------------|--|---------------------------|

Helping patients deal with loss. The Grief Work Model. Use of the model in alcoholism field. Prerequisite: Alc 402.

| | | |
|--------------|--|------------------|
| Alc 491 SD01 | Alcohol and Nutrition (1) July 27-31, Daily, 4:00-5:50 p.m. | Schnell P 405 |
|--------------|--|------------------|

Basic principles of nutrition. Malnutrition in alcoholics. Nutrients in health and disease. Prerequisite: Alc 401 01.

| | | |
|--------------|---|----------------|
| Alc 491 SE01 | Anorexia and Alcoholism (2) July 27-31, Daily, 9:00 a.m.-3:30 p.m. | Roise P 354 |
|--------------|---|----------------|

The nature of eating disorders (anorexia nervosa and bulimia) and possible links to alcohol/drug abuse. Prerequisite: Alc 402.

| | | |
|--------------|---|--------------------|
| Alc 492 SA01 | Alcohol and Schools (2) July 13-17, Daily, 9:00 a.m.-3:00 p.m. | Kosterman P 401 |
|--------------|---|--------------------|

Alcohol and drug problems in adolescents. Children from alcoholic homes. How educational professionals can help, and prevent problems. Also offered under Ed 491 SF01.

Eight-Week Courses

| | | |
|------------|--|------------------|
| Alc 401 01 | Pharmacology/Physiology of Alcohol Use (2) 8-week, Monday, 7:00-8:30 p.m. | Schnell P 405 |
|------------|--|------------------|

Absorption, distribution, excretion, and metabolism. Behavioral effects and chronic organ damage. Prerequisite: Alc 400 or permission of Director.

| | | |
|------------|--|------------------|
| Alc 402 01 | Counseling Principles and Techniques (4) 8-week, MW, 7:00-9:30 p.m. | Dickman P 401 |
|------------|--|------------------|

Patient/counselor relationship. Legal and ethical responsibilities. Directive vs. non-directive. Role-playing and video-taping. Prerequisite: Alc 400.

| | | |
|------------|---|------------------|
| Alc 402 02 | Counseling Principles and Techniques (4) 8-week, TTh, 7:00-9:30 p.m. | Carlson P 401 |
|------------|---|------------------|

See description above.

| | | |
|------------|--|-----------------|
| Alc 403 01 | Personal and Social Rehabilitation (2) 8-week, Wednesday, 7:00-9:30 p.m. | Wagner P 405 |
|------------|--|-----------------|

Motivation and personal problems in recovering alcoholics. Sobriety, relapses, dry-drunks, family adjustments and recovery. Prerequisite: Alc 400.

| | | |
|------------|--|---------------------|
| Alc 405 01 | Law and Alcohol (2) 8-week, Tuesday, 7:00-9:30 p.m. | Bennington P 451 |
|------------|--|---------------------|

Legal implications and consequences of alcohol-related offenses. Uniform Act. Deferred prosecution. Courts and jurisdictions. Prerequisite: Alc 400 or permission of Director.

| | | |
|------------|---|-------------|
| Alc 407 01 | Field Experience I—Alcoholism (3) 8-week, Arranged | Bury Arr |
|------------|---|-------------|

Supervised work in an approved alcoholism facility. Oral and written reports. Prerequisite: Alc 402.

| | | |
|------------|--|-------------|
| Alc 408 01 | Field Experience II—Drug Abuse (3) 8-week, Arranged | Bury Arr |
|------------|--|-------------|

Supervised work in an approved drug abuse facility. Oral and written reports. Prerequisite: Alc 407

CLASSES

| Course/Section | Description/Credit Session/Time | Instructor Building/Room |
|--|---|--------------------------|
| Alc 410 50 | Individual Research (1-3) 8-week, Arranged | Staff Arr |
| Open only to students with sufficient academic background to pursue independent study. Permission of Director. | | |
| Alc 421 50 | Advanced Project or Research in Alcoholism/Drug Abuse (2-5) 8-week, Arranged | Staff Arr |
| Replication, original research or scholarly investigation which demonstrates mastery of fact-finding, experimental design, and presentation of results. | | |
| Alc 425 01 | Drug Abuse II: Physiological Aspects (2) 8-week, Monday, 7:00-9:30 p.m. | Halsey P 451 |
| Pharmacology and physiology of drug action. Interactions. Polydrug abuse and addiction. The major psychoactive drugs. Prerequisites: Alc 401 and 424. | | |
| Alc 491 SF01 | Adult Children of Alcoholics (2) 8-week, Tuesday, 7:00-9:30 p.m. | Jenkins/Sale P 405 |
| Personality characteristics of adult children of alcoholics. Risks for alcoholism and other life problems. Therapy models. Prerequisites: Alc 402 and 403. | | |
| Alc 491 SG01 | Intervention Process (2) 8-week, Wednesday, 7:00-9:30 p.m. | Sundin/Gustafson P451 |
| Facilitation of the intervention process. Family focus. Role-playing and strategies. Goals and risks. Prerequisites: Alc 402 and 403. | | |
| Alc 491 SH01 | Normal Family Dynamics (2) 8-week, Thursday, 7:00-9:30 p.m. | Black P 405 |
| Exploration of models of normal families. Roles and duties. Parenting, communicating, nurturing within a normal family. Prerequisite: Alc 400 or permission of Director. | | |

Allied Health

Cytotechnology

| | | |
|---|---|--------------|
| AH 396 50 | Cytotechnology Internship (0) Arranged | Buschman NOC |
| AH 473 01 | Clinical Orientation to Ultrasound (10) | Mentors NOC |
| Clinical Ultrasound Internship. Arranged. | | |

Nuclear Medicine

| | | |
|---|--|-------------|
| AH 453 01 | Applied Nuclear Medicine Technology IV (7) | Mentors NOC |
| Clinical Nuclear Medicine Internship. Arranged. | | |
| AH 459 01 | Nuclear Medicine Seminar IV (2) | Mentors NOC |
| Clinical Nuclear Medicine Internship. Arranged. | | |
| AH 474 01 | Clinical Experience in Ultrasound (8) | Mentors NOC |
| Clinical Ultrasound Internship. Arranged. | | |
| AH 483 01 | Ultrasound Seminar (2) | Skelly Arr |
| Clinical Ultrasound Internship. 8-week, Arranged. | | |
| AH 484 01 | Basic Science: Ultrasound (2) | Skelly NOC |
| Clinical Ultrasound Internship. Arranged. | | |

Biology

| | | |
|-----------|--|--------------------|
| BI 182 01 | Elementary Human Anatomy and Physiology (5) 8-week, Daily, 9:20-10:20 a.m. Lab, Thursday, 1:10-5:00 p.m. | Santisteban Ga 111 |
|-----------|--|--------------------|

A one-quarter survey of structure and function of the human body. Lecture-laboratory sessions.

Business

| | | |
|------------|--|---------------------------|
| Bus 230 01 | Principles of Accounting I (Financial) (5) 8-week, MW, 11:50 a.m.-2:20 p.m. | Ziebell P 351 Bus Core |
|------------|--|---------------------------|

Introduction to financial accounting concepts with emphasis on the development and interpretation of financial statements. Prerequisite: Sophomore standing.

| | | |
|------------|--|--------------------------|
| Bus 231 01 | Principles of Accounting II (Managerial) (5) 8-week, MW, 11:50 a.m.-2:20 p.m. | Tinius P 353 Bus Core |
|------------|--|--------------------------|

Introduction to the use of accounting information for decision-making in planning and controlling the operation of businesses. Prerequisites: Sophomore standing and Bus 230.

| | | |
|------------|--|-------------------------|
| Bus 260 01 | Business Statistics (5) 8-week, TTh, 5:35-7:55 p.m. | Staff P 352 Bus Core |
|------------|--|-------------------------|

Business applications of basic statistics, probability distributions, expectation, sampling, estimation, hypothesis testing, index numbers, time series analysis. Prerequisites: Mt 130 and Sophomore standing.

| | | |
|------------|---|---------------------------|
| Bus 270 01 | Law and Business (5) 8-week, Daily, 7:50-9:00 a.m. | Arnesen P 351 Bus Core |
|------------|---|---------------------------|

Nature and development of the law, structure and functions of the court, civil and criminal procedure, role of attorneys and introduction to the law of contracts. Prerequisite: Sophomore standing.

| | | |
|------------|---|--------------------------|
| Bus 310 01 | Computer-based Management Information Systems (5) First, Daily, 1:10-4:10 p.m. | Ansari P 304 Bus Core |
|------------|---|--------------------------|

Examination of background management elements related to data processing systems. Planning and design of information flows and business systems. Prerequisites: CSC 113 or 114, or CSC 291; Junior standing.

| | | |
|------------|--|---------------|
| Bus 330 01 | Cost Accounting (5) 8-week, MW, 7:50-10:10 a.m. | Ziebell P 353 |
|------------|--|---------------|

Determination of manufacturing costs in job order, process and standard cost systems; introduction to methods of cost control. Prerequisites: Bus 231 and Junior standing.

| | | |
|------------|--|-----------------|
| Bus 333 01 | Intermediate Accounting II (5) 8-week, MW, 11:50 a.m.-2:20 p.m. | Cleveland P 352 |
|------------|--|-----------------|

Theory and development of accounting principles; evolution of the theory as it relates to the current state of accounting for liabilities and owners' equities. Prerequisites: Bus 332 and Junior standing.

| | | |
|------------|---|-----------------|
| Bus 334 01 | Intermediate Accounting III (5) 8-week, MW, 5:35-7:55 p.m. | Cleveland P 352 |
|------------|---|-----------------|

Study of advanced topics in accounting theory and practice with emphasis on financial reporting. Prerequisites: Bus 333 and Junior standing.

CLASSES

| Course/Section | Description/Credit Session/Time | Instructor Building/Room |
|--|--|--|
| Bus 340 01 | Business Finance (5) 8-week, Daily, 7:50-9:00 a.m. | Carrithers P 302 Bus Core |
| Study of the financial policies and practices of business firms, asset management; capital budgeting; cost of capital; management of funds; financing growth. Prerequisites: Ec 271; Bus 231; Junior standing. | | |
| Bus 350 01 | Introduction to Marketing (5) 8-week, TTh, 10:30 a.m.-1:00 p.m. | Staff P 302 Bus Core |
| Survey of institutions and essential functions of the marketing system; analysis of marketing mix, product, place, price strategies. Prerequisite: Junior standing. | | |
| Bus 360 01 | Production and Operations Management (5) Second, Daily, 1:10-4:10 p.m. | Brown P 302 Bus Core |
| Survey of the system analysis design and operating techniques for manufacturing and service organizations. Prerequisites: Bus 260, CSC 113 or 114. | | |
| Bus 380 01 | Organization Behavior (5) 8-week, MW, 10:30 a.m.-1:00 p.m. | Staff P 302 Bus Core |
| Develop understanding of organizational behavior with focus on basic processes, methods involved in diagnosing human situations. Prerequisite: Junior standing. | | |
| Bus 391 SA01 | Japan and the West (5) 8-week, MW, 5:30-8:00 p.m. | Taylor P 305 |
| An interdisciplinary study of the Japanese culture, its values, habits of thought, and fundamental assumptions about reality as seen in its cultural products, including language and literature, fine arts, pop culture, business structures, and social institutions. Guest lecturers, Japanese and American. Of interest to anyone wanting to learn about the Japanese culture, or anyone planning to deal directly with Japanese people or institutions. Also offered under En 391 SD01 and Ed 491 SN01. | | |
| Bus 435 01 | Auditing (5) 8-week, TTh, 5:35-7:55 p.m. | Judd P 304 |
| Purpose, scope, concepts and methods used in examining and attesting to financial statements. Prerequisite: Bus 334. | | |
| Bus 482 01 | Business Policy and Organization (5) 8-week, MW, 5:35-7:55 p.m. | Stephenson P 304 Bus Core |
| Case studies of policy and administration of business; original work in analysis and policy decisions. Prerequisites: All Business Core courses and Senior standing. | | |
| Bus 496 50 | Independent Study (1-5) Arranged | Staff Arr |
| Independent study under the supervision of a faculty member. Prerequisite: Permission of Instructor, Dean, and Adviser. | | |

Business Graduate Courses

| | | |
|--|---|----------------------|
| Bus 501 01 | Business Statistics (3) 8-week, TTh, 5:35-7:00 p.m. | Toh P 302 |
| Business applications of business statistics, probability concepts, probability distributions, expectations, sampling, estimation, hypothesis testing, index numbers, time series analysis, forecasting techniques and introduction to simple linear models. | | |
| Bus 502 01 | Financial Accounting (3) 8-week, MW, 7:15-8:45 p.m. | Weis P 351 |
| Concepts and principles underlying accounting with special attention to income determination and measurement of assets and equities. Analysis of business performance from accounting viewpoint. | | |

| | | |
|---|--|---------------------------|
| Bus 506 01 | Economic Analysis (3) 8-week, MW, 5:35-7:00 p.m. | DeKay P 302 |
| Functioning of mixed marketing economy. Determinants of aggregate level of income employment and prices. Forecasting and policy analysis, international aspects. | | |
| Bus 507 01 | Organization Behavior (3) 8-week, MW, 5:35-7:00 p.m. | Callahan P 351 |
| Administration process with emphasis on organizational behavior. Basic contributions of social science to the study and practice of management. Analysis of socio-psychological theory and research, decision making, group structure, dynamics and leadership. | | |
| Bus 508 01 | Production and Operations Management (3) 8-week, TTh, 5:35-7:00 p.m. | Modarress P 351 |
| Survey of the system analysis and operating techniques for manufacturing and service organizations. Prerequisites: Bus 500 and 501. | | |
| Bus 530 01 | Managerial Accounting (3) 8-week, MW, 7:15-8:45 p.m. | Tinius P 353 |
| An examination of the basic issues of managerial accounting—product costing and information for planning and control decisions—through problem solving, case analysis, lecture and class discussion. Prerequisite: Bus 502. | | |
| Bus 539 53 | Research in Accounting (3) Arranged | Staff Arr |
| Permission of Instructor. | | |
| Bus 549 53 | Research in Finance (3) Arranged | Staff Arr |
| Permission of Instructor. | | |
| Bus 550 01 | Domestic and International Marketing (3) 8-week, TTh, 5:35-7:00 p.m. | Burke P 353 |
| Managerial approach to the study of various policy areas in marketing through the use of case studies. Prerequisite: Bus 504. | | |
| Bus 559 53 | Research in Marketing (3) Arranged | Staff Arr |
| Permission of Instructor. | | |
| Bus 562 01 | Advanced Statistical Analysis (3) 8-week, TTh, 7:15-8:45 p.m. | Toh P 353 |
| Fundamentals of sampling, analysis of variance, non-parametric methods, multivariate and non-linear regression models, advanced time series analysis. Prerequisites: Bus 501 and 508. | | |
| Bus 566 01 | Forecasting Business Conditions (3) 8-week, MW, 5:35-7:00 p.m. | Rivers P 353 |
| Focus is on techniques of forecasting appropriate at the firm and industry levels. Judgmental projections and model building are emphasized. Prerequisites: Bus 500 and 501. | | |
| Bus 569 53 | Research Operations/ Systems (3) Arranged | Staff Arr |
| Permission of Instructor. | | |
| Bus 570 01 | Managerial Economics (3) 8-week, MW, 7:15-8:45 p.m. | Rivers P 354 |
| Theory of the consumer, the firm, and the industry, with emphasis on applications to business decision making. | | |

CLASSES

| Course/Section | Description/Credit Session/Time | Instructor Building/Room |
|---|---|---------------------------|
| Bus 576 01 | Finance for International Business (3) 8-week, MW, 7:15-8:45 p.m. | DeKay P 306 |
| Balance of payments, international investment, exchange controls, liquidity and adjustment problems. IMF, American payment problems, Eurodollar market. Prerequisite: Bus 506. | | |
| Bus 577 01 | Business Responsibilities/Ethics (3) 8-week, TTh, 5:35-7:00 p.m. | Mandelbaum/Hopps P 306 |
| Bases for ethical relationships among agents in a mixed market economy. Responsibilities on both sides of such relationships are examined: employer and employee, firm and customer, competitors, stockholders, dealers and suppliers, unions, local community and government. | | |
| Bus 579 53 | Research Environmental Area (3) Arranged | Staff Arr |
| Permission of Instructor. | | |
| Bus 585 01 | Management of Change (3) Fridays: July 24, 31, August 7; 5:30-8:30 p.m. Saturdays: July 25, August 1, 8; 9:00 a.m.-4:00 p.m. | Mills, D. P 353 |
| A course on the future: forecasting methods, trends, scenarios. Discussions of change processes (diffusion, revolution, attitude change) and methods of responding. Also offered under Pub 585. | | |
| Bus 586 01 | Entrepreneurship and Small Business Management (3) 8-week, Tuesday, 7:15-10:00 p.m. | Stephenson P 351 |
| Procedures and problems in starting and operating a successful small business enterprise. Prerequisite: Bus 580. | | |
| Bus 589 53 | Research Behavioral Area (3) Arranged | Staff Arr |
| Permission of Instructor. | | |
| Bus 591 SA01 | Seminar in Negotiating, Mediating and Advocating (3) First, TTh, 7:15-8:45 p.m., and Friday, Saturday: Time arranged | Mandelbaum P 302 |
| Objective of this course is to build confidence and skill in professional negotiation. Both traditional adversary and current nonadversary theory and practice are applied. Simulations and role playing complement lecture/discussions. | | |
| Bus 591 SB01 | Quality Control (3) 8-week, TTh, 7:15-8:45 p.m. | Modarress P 354 |
| This course provides a fundamental yet comprehensive coverage of quality control principles and procedures pertinent to the quality of output of a given manufacturing process, and research on quality problems. While the quality control concept is associated primarily with industries and manufactured products, the application of quality control techniques in service industries is discussed and considered. | | |
| Bus 591 SC01 | Industrial Organization (3) 8-week, MW, 5:35-7:00 p.m. | Nickerson P 306 |
| Covers market structure of U.S. business and the effects that different market structures have on pricing, marketing innovation and profit seeking. Prerequisite: Bus 570. | | |
| Bus 591 SD01 | Management Information Systems (3) 8-week, MW, 7:15-8:45 p.m. | Staff P 302 |
| Planning, designing, implementing, and evaluating commercial systems. Use of programming concepts for data base management. Development of | | |

| Course/Section | Description/Credit Session/Time | Instructor Building/Room |
|---|--|--------------------------|
| Bus 595 01 | Business Policy (3) 8-week, Thursday, 7:15-10:00 p.m. | Stephenson P 351 |
| Policy problems faced by chief administrative officers. Determination of objectives, development of policies to achieve objectives, organization of executive personnel to implement policies, coordination of the organization and adjustments to changes in environment. Case study seminars. Prerequisites: All Management core. | | |
| Bus 596 50 | Independent Study (1-3) Arranged | Staff Arr |
| Prerequisite: Permission of Instructor and Dean. | | |

Chemistry

| | | |
|--|---|--------------------------------|
| Ch 110 01 | Fundamentals of Chemistry (5) 8-week, Daily, 10:30-11:30 a.m. | Smith Ba 502 Core Option |
| An introduction to chemistry for students with little preparation in the sciences. Can serve as a preparation for Ch 101 or 121. | | |
| Ch 241 01 | Organic Chemistry I (4) First, Daily, 9:20-11:30 a.m. | Meany Ba 501 |
| Beginning organic chemistry for chemistry and biology majors and premed students. Prerequisites: Ch 123 and 133. | | |
| Ch 242 01 | Organic Chemistry II (4) Second, Daily, 9:20-11:30 a.m. | Meany Ba 501 |
| Continuation of Ch 241. Prerequisites: Ch 241 and 251. | | |
| Ch 251 01 | Organic Chemistry Lab I (2) First, TTh, 1:10-5:10 p.m. | Meany Ba 501 |
| Laboratory for Ch 241. Corequisite: Ch 241. | | |
| Ch 252 01 | Organic Chemistry Lab II (2) Second, TTh, 1:10-5:10 p.m. | Meany Ba 501 |
| Laboratory for Ch 242. Corequisite: Ch 242. Prerequisite: Ch 251. | | |
| Ch 499 50 | Undergraduate Research (1-6) Arranged | Staff Arr |
| Permission of Chair. | | |

Computer Science

| | | |
|--|--|-------------------|
| CSC 103 01 | Introduction to Computers and Applications (5) 8-week, Daily, 8:00-9:00 a.m. | Richter Ba 402 |
| Introduction to computers and the use of microcomputers in wordprocessing, spread-sheets and database application. No prior experience with computers is required or assumed. Meets CSC 113 requirement for Business majors. | | |
| CSC 113 01 | Introductory Programming with BASIC (5) 8-week, Daily, 9:20-10:20 a.m. | Richter Ba 402 |
| Introduction to computer programming using the BASIC language. Several programs will be implemented. | | |
| CSC 114 01 | Introductory Programming with FORTRAN (5) 8-week, Daily, 9:20-10:20 a.m. | Ehlers Ba 202 |
| Introduction to computer programming using the FORTRAN language. Several programs will be implemented. Prerequisite: Mt 101. | | |

CLASSES

| Course/Section | Description/Credit Session/Time | Instructor Building/Room |
|---|--|--------------------------|
| CSC 150 01 | Introduction to Computer Science (5) 8-week, Daily, 10:30-11:30 a.m. | Spector Ba 201 |
| Introduction to the discipline of computer science, including coverage of basic concepts of hardware, software, algorithms and control/data structures. Prerequisite: CSC 113 or 114. | | |
| CSC 170 01 | Intermediate Programming with PASCAL (5) 8-week, Daily, 9:20-10:20 a.m. | Spector Ba 401 |
| A second level course in computer programming, involving the use of the PASCAL language. Several programs will be assigned involving fundamental algorithms and data structures. Prerequisites: CSC 150 and Mt 135. | | |
| CSC 235 01 | Computer Systems and Assembler Language (5) 8-week, Daily, 10:30-11:30 a.m. | Yunten Ba 202 |
| Introduction to computer systems and writing programs in Assembler language. Several programs will be written in microcomputer assembly language. Prerequisite: CSC 170 or 180. | | |
| CSC 491 SA01 | Special Topics: C Language Programming on the Macintosh (5) 8-week, MW, 6:00-8:30 p.m. | Jackson Ba 202 |
| An introduction to writing C-Language programs on the Apple Macintosh computer. No prior experience with C or the Macintosh is required. Prerequisite: Some experience in computer programming. | | |

Criminal Justice Program

| | | |
|--|--|-------------------|
| CJP 291 SA01 | Polygraph (5) 7-week, Daily, 9:10-10:20 a.m. | Kelliher P 352 |
| An introduction to the science of polygraphy—including the history, validity, and reliability; use in courts and ethics. | | |
| CJP 378 01 | Field Experience I (5) 7-week, Arranged | Kelliher Arr |
| CJP 379 01 | Field Experience II (5) 7-week, Arranged | Kelliher Arr |
| CJP 496 50 | Independent Study (1-5) 7-week, Arranged | Kelliher Arr |

Economics

| | | |
|---|--|---------------------------------------|
| Ec 271 01 | Principles of Economics-MACRO (5) 8-week, Daily, 9:10-10:20 a.m. | Nickerson P 302 Core Option-Bus |
| Organization, operation, and control of the U.S. economy in its historical and socio-political setting. Problems of inflation, unemployment, taxation, the public debt, money and banking, growth. Prerequisite: Sophomore. | | |

Education: One-Week Courses

| | | |
|--|---|------------------|
| Ed 491 SA01 | Instructional Theory into Practice (ITIP) (3) June 15-19, 8:00 a.m.-3:00 p.m. | Perri P 401 |
| The elements of successful teaching, distilled from the literature in human learning and from observation of master teachers by Madeline Hunter and her colleagues at UCLA. (Reduced tuition \$150.) | | |
| Ed 491 SB01 | Peace-ing It Together (3) June 22-26, 8:00 a.m.-3:00 p.m. | Fellers P 405 |
| Emphasizes theory and practice of an elementary peace education program including peace and justice issues. (Reduced tuition \$150.) | | |

| | | |
|---|--|--------------------|
| Ed 491 SC01 | Peaceful Procedures (3) July 6-10, 8:00 a.m.-3:00 p.m. | Fellers P 405 |
| Help fight stress and teacher burnout! Emphasizes theory and practice of peaceful organizational methods. (Reduced tuition \$150.) | | |
| Ed 491 SD01 | Catholic School Leadership: Christian Formation (2) June 22-26, 9:00 a.m.-1:00 p.m. | Gedaro P 551 |
| This course will provide information, resources, and activities which focus on the concepts of Christian formation, staff development, and spiritual leadership. (Reduced tuition \$100.) | | |
| Ed 491 SE01 | The Shape of Jesus in Our Classrooms (2) August 10-14, 9:00 a.m.-1:00 p.m. | Krsak P 401 |
| Practical helps to "shape up" our religious learning, enthusiasm, commitment, and dedication to Jesus. (Reduced tuition \$100.) | | |
| Ed 491 SF01 | Alcohol and Schools (2) July 13-17, 9:00 a.m.-3:00 p.m. | Kosterman P 401 |
| Alcohol and drug problems in adolescents; children from alcoholic homes. How educational professionals can help, and prevent problems. Also offered under Alc 492 SA01. | | |
| Ed 491 SG01 | Alcoholics Anonymous: Recovery As Spiritual Path (1) June 25-26, 11:00 a.m.-4:00 p.m. | Kurtz P 401 |
| History and evolution of A.A. as a model for a spiritual path for recovery from addiction. Prerequisite: Alc 400 or permission of Instructor. Also offered under Alc 491 SA01 and Psy 491 SA01. | | |
| Ed 491 SP01 | Practical Teaching Strategies in Mathematics and Reading/English (1) June 29-July 2, 1:10-3:10 p.m. | Bimstein P 454 |
| Instructional strategies for elementary teachers; most useful for teachers of grades 3 through 6. Hands-on materials, experiences. | | |
| Ed 491 SR01 | Teaching of Basic Reading/Writing to Out-of-School Non-Readers (2) June 5 (Friday), 6:00-10:00 p.m.; June 6 (Saturday), 9:00 a.m.-5:00 p.m. | Staff Ba 112 |
| Required: 12 contact hours for training and 15 hours of supervised tutoring to be completed before August 7. See "Of Special Interest" section for fuller description. | | |
| Ed 561 SD01 | Qualitative Evaluation and Teacher Performance (2) July 20-24 9:00 a.m.-1:00 p.m. | Eisner P 306 |
| Use qualitative evaluation to improve teacher performance. Clinical techniques for gathering and assessing qualitative data to promote reflection and dialogue on teacher performance. | | |

Two-Week Courses

| | | |
|---|--|------------------------------|
| Ed 450 01 | Introduction to Gifted Education (3) July 6-17, 1:10-3:50 p.m. | Olson P 455 |
| Introduction to gifted education, including definition and identification of areas of giftedness, curriculum modes, program organization, awareness of and attitudes toward giftedness and evaluation of student performance. Language Arts, Humanities, and the Arts will be considered. | | |
| Ed 451 01 | Gifted Education: Mathematics (3) July 20-31, 7:50-10:20 a.m. | Langdon/ Bronson P 455 |
| Current research exploring the relationship of brain development to the types of giftedness will be studied. Implications of this research and its application to mathematics lessons for gifted students will be identified. | | |

CLASSES

| Course/Section | Description/Credit Session/Time | Instructor Building/Room |
|----------------|---------------------------------|--------------------------|
|----------------|---------------------------------|--------------------------|

| | | |
|-------------|--|-------------------------------|
| Ed 491 SH01 | The Substitute Teacher (3) July 20-31, 11:50 a.m.-2:20 p.m. | Iverson/ Billeter P 551 |
|-------------|--|-------------------------------|

Covered in this course are the specific and interdisciplinary strategies needed by a substitute, along with the application of classroom management techniques and current educational methods.

| | | |
|-------------|---|---------------|
| Ed 491 SI01 | Teaching Science in the Elementary School (3) June 22-July 2, 1:10-3:50 p.m. | Wild P 455 |
|-------------|---|---------------|

Methods and techniques for teaching science in the elementary grades. (Reduced tuition \$150.)

| | | |
|-------------|--|----------------------------------|
| Ed 491 SJ01 | Symposium on Alcoholism (3) June 22-July 2, Daily, 9:00 a.m.-4:00 p.m. | Schnell/Royce /Kurtz P 401 |
|-------------|--|----------------------------------|

Survey on alcoholism with special emphasis on spirituality. Alcoholism; nature, causes, diagnosis, prevention and recovery. Spiritual programs for recovery. Also offered under Alc 400 01 and Psy 490 01.

| | | |
|-------------|--|-----------------|
| Ed 491 SK01 | LOGO and LOGOWriter I (2) July 20-31, 9:10-11:10 a.m. | Marion P 405 |
|-------------|--|-----------------|

No previous experience with computers required. Turtle graphics and word processor integration into the curriculum.

| | | |
|-------------|---|-----------------|
| Ed 491 SL01 | LOGO and LOGOWriter II (2) August 3-14, 11:50 a.m.-1:50 p.m. | Marion P 405 |
|-------------|---|-----------------|

Text processing and more advanced LOGO/LOGOWriter application, integration into a content area of the student's choice. Prerequisite: LOGO I or familiarity with LOGO.

| | | |
|-----------|--|-----------------|
| Ed 545 01 | Special Methods in Mental Retardation (3) August 3-14, 1:10-3:40 p.m. | Burton P 453 |
|-----------|--|-----------------|

Educational provisions for the retarded affected by environmental deprivation, sensory and/or other impairments. Prerequisite: Ed 546.

| | | |
|-----------|--|-----------------|
| Ed 546 01 | Seminar in Mental Retardation (3) July 6-17, 1:10-3:40 p.m. | Hilton P 452 |
|-----------|--|-----------------|

Investigation, analysis and reporting on studies and trends in education of the mentally retarded. Prerequisite: Ed 426 or equivalent.

| | | |
|-----------|--|--------------------------|
| Ed 550 01 | Creativity and Productive Thinking (3) July 20-31, 1:10-3:50 p.m. | Langdon/Bronson P 455 |
|-----------|--|--------------------------|

Discussion of the identification and assessment of creative abilities and productive thinking skills; curriculum development and instructional designs for creatively gifted students. Prerequisite: Ed 450 01.

First Four-Week Term: June 22-July 17

| | | |
|-----------|---|-----------------|
| Ed 424 01 | Introduction to Learning Disabilities (3) First, Daily, 7:50-9:00 a.m. | Denoon P 451 |
|-----------|---|-----------------|

History and current practices in diagnosis and remediation of learning disabilities.

| | | |
|-----------|--|-----------------|
| Ed 432 01 | Mainstreaming the Exceptional Student (3) First, Daily, 9:10-10:20 a.m. | Hilton P 451 |
|-----------|--|-----------------|

Issues surrounding mainstreaming; methods for working with exceptional students in the regular classroom.

| | | |
|-------------|---|--------------------|
| Ed 491 SG01 | Thinking Skills in the Curriculum (3) First, TTh, 4:00-7:00 p.m. | Bumgarner P 401 |
|-------------|---|--------------------|

Survey of the current thinking skills movement. Presentations by local trainers will be included.

| Course/Section | Description/Credit Session/Time | Instructor Building/Room |
|----------------|---------------------------------|--------------------------|
|----------------|---------------------------------|--------------------------|

| | | |
|-----------|---|-----------------|
| Ed 500 01 | Introduction to Research and Graduate Study (3) First, Daily, 11:50 a.m.-1:00 p.m. | Zarter P 451 |
|-----------|---|-----------------|

Introduction to research skills and literature in students' fields. Includes orientation to graduate studies. Ordinarily taken as first graduate course.

| | | |
|-----------|--|----------------|
| Ed 507 01 | Principles of Educational Law (3) First, Daily, 7:50 a.m.-9:00 a.m. | Staff P 452 |
|-----------|--|----------------|

Introduction to American legal system and principles affecting education. Emphasis on constitutional, statutory, regulatory and case precedents applicable nationally to all levels of education.

| | | |
|-----------|--|-----------------|
| Ed 508 01 | The School Superintendent: Politics and Policy (3) First, TTh, 4:20-6:50 p.m. | Bilboa P 452 |
|-----------|--|-----------------|

Local, state, and federal political structures and processes which influence and in turn are influenced by education policies. Emphasis on use of these systems by practicing superintendents to achieve goals.

| | | |
|-----------|---|---------------|
| Ed 511 01 | Counseling Theories (3) First, MW, and two Fridays, 9:10-11:40 a.m. | Owen P 452 |
|-----------|---|---------------|

Theoretical foundations of major counseling approaches with opportunities for in-class practice in simulated counseling interview. Complement to Ed 510, though they need not be taken concurrently.

| | | |
|-----------|--|----------------|
| Ed 523 01 | Adolescent Psychology Learning (3) First, Daily, 11:50 a.m.-1:00 p.m. | Staff P 453 |
|-----------|--|----------------|

Investigation studies in adolescent psychology and learning.

| | | |
|-----------|---|-----------------|
| Ed 524 01 | Seminar in Behavior Disorders (3) First, Daily, 10:30-11:40 a.m. | Denoon P 453 |
|-----------|---|-----------------|

Overview of practices and rationales in the education of the behavior disordered and/or emotionally disturbed child. Structuring of individualized remedial programs and techniques which utilize existing agencies and personnel.

| | | |
|-----------|--|---------------|
| Ed 526 01 | Reading Practicum Workshop (3) Arranged | Rudeen Arr |
|-----------|--|---------------|

Emphasis on task analysis lesson design using ECRI instructions for word recognition and comprehension skills; recording and reporting student learning increments, and study of role and application of materials.

| | | |
|-----------|--|--------------|
| Ed 532 01 | Field Practicum in Reading (6) Arranged | Staff Arr |
|-----------|--|--------------|

Supervised field experience in diagnosis and teaching of reading. Prerequisite: Ed 533, 534, or permission of Instructor.

| | | |
|-----------|--|----------------------|
| Ed 534 01 | Seminar in Teaching of Reading (3) First, Daily, 10:30-11:40 a.m. | Schlick-Noe P 451 |
|-----------|--|----------------------|

Development of reading skills at all levels; examination and evaluation of current reading practices, research, and materials. Prerequisite: Ed 336, 337, or equivalent.

| | | |
|-----------|--|-------------------|
| Ed 540 01 | Basics of Curriculum and Instruction (3) First, MW, 7:50-10:20 a.m. and June 26, July 10 (Fridays) | Tresvant P 453 |
|-----------|--|-------------------|

Study of the foundations of curriculum and instructional development. Investigation and analysis of selected current issues, innovations, and trends with an emphasis on their bases.

CLASSES

| Course/Section | Description/Credit Session/Time | Instructor Building/Room |
|--|--|-----------------------------------|
| Ed 561 SA01 | Continuing Certification for Counselors (3) First, TTh, 1:10-4:20 p.m. and two Fridays | Ingram P 456 Arr |
| Curriculum based on WAC regulations for continuing level counseling certification. Emphasis on practical application and growth of personal perspectives on school counseling. | | |
| Ed 561 SC01 | Finance in Higher Education (3) Staff First, Daily, 10:30-11:40 a.m. | P 456 |
| An examination of financial issues confronting higher education. | | |
| Ed 562 SA01 | The American Community College (3) First, MW, 5:00-7:45 p.m. | Hungar P 456 |
| Overview of history, policies, issues. | | |
| Ed 581 01 | Fundamentals of Administration (3) First, Daily, 10:30-11:40 a.m. | Barker P 455 |
| Administration theory, style, criteria, responsibilities, process, and management by objective. | | |
| Ed 604 01 | Workshop in Organizational Development and Change (3) First, MWF, 1:30-4:30 p.m. | Forbes/Wahle/ Morford P 451 |
| Integrated workshop relating to organizational development, conflict management. Required during the second summer in the Ed.D. program. Permission of Instructor. | | |

Second Four-Week Term July 20-August 14

| | | |
|---|--|----------------------|
| Ed 460 01 | Computers and Instructional Technology in Classroom (3) Second, Daily, 1:10-2:20 p.m. | Towner P 401 |
| An examination of the uses of computers and other forms of media in the classroom. | | |
| Ed 491 SM01 | Working with Parents and Professionals (3) Second, Daily, 10:30-11:40 a.m. | Burton P 455 |
| Rationale, techniques and strategies for work with parents, school district professionals, and others involved in the child's education. | | |
| Ed 501 01 | Philosophy of Education (3) Second, Daily, 9:10-10:20 a.m. | Haggerty P 452 |
| Philosophical foundations of education and related fields. | | |
| Ed 515 01 | Multicultures (3) Second, Daily, 7:50-9:00 a.m. | Pang P 405 |
| Examination of a wide variety of cultures with implications for helping professions. | | |
| Ed 521 01 | Adult Psychology/Learning (3) Second, TTh, and 7/31, 8/14 (Fridays) 11:50 a.m.-2:20 p.m. | Crow P 451 |
| Investigation of various theories of adult development and learning. | | |
| Ed 522 01 | Child Psychology/Learning (3) Second, MW, and 7/24, 8/7 (Fridays) 11:50 a.m.-2:20 p.m. | Guest P 452 |
| Investigation of various theories of child development and learning. | | |
| Ed 535 01 | Reading in Content Fields (3) Second, Daily, 7:50-9:00 a.m. | Schlick-Noe P 451 |
| Decoding and vocabulary analysis comprehension, reading rate, study skills, and reading interests as related to specific content fields. Prerequisite: Ed 336 or Ed 337 or equivalent, or permission of Instructor. | | |

| | | |
|--|---|-------------------------|
| Ed 536 01 | Supervision of Instruction (3) Second, TTh, 11:50 a.m.-2:20 p.m. and July 31 & August 14 (Fridays). | Haggerty P 456 |
| Improvement of instruction through supervisory leadership. | | |
| Ed 543 01 | Corrective Techniques in the Teaching of Reading (3) Second, Daily, 10:30-11:40 a.m. | Staff P 451 |
| Identification of components of effective corrective reading programs; description and application of specific methods and materials; evaluation and design of corrective reading approaches. Prerequisite: Ed 533 or Ed 547. | | |
| Ed 544 01 | Seminar: Instructional Effectiveness (3) Second, Daily, 9:10-10:20 a.m. | Hanson P 452 |
| Survey of current research on teacher behaviors, instructional patterns, classroom conditions and school characteristics associated with student learning. Review of teaching and learning styles with an emphasis on value based instruction. | | |
| Ed 563 01 | Seminar in Reading Research (3) Second, Daily, 9:10-10:20 a.m. | Staff LL 108 |
| Discuss current research in reading education. | | |
| Ed 583 01 | School Finance (3) Second, Daily, 11:50 a.m.-1:00 p.m. | Staff P 453 |
| Historical development; balanced taxation; school support program; problems and controversies. | | |
| Ed 584 01 | Washington School Law (3) Second, Daily, 7:50-9:00 a.m. | Howard P 452 |
| School laws of Washington based on its constitution, statutes, administrative code and court precedents. Emphasis on applicability to the K-12 system. Prerequisite: Ed 507. | | |
| Ed 586 01 | Professional Personnel (3) Second, Daily, 10:30-11:40 a.m. | Staff P 453 |
| Selection, assignment, evaluation, competency maintenance; positive personnel climate, rights, responsibilities, grievances, and bargaining procedures. | | |
| Ed 593 01 | School Business Administration (3) Second, Daily, 9:10-10:20 a.m. | Staff P 453 |
| Legal and procedural factors in school budgeting, expending, accounting, auditing, planning policy, program budgeting and community reporting as they relate to federal and state rules and regulations. | | |
| Ed 600 01 | Workshop in Educational Leadership (9) July 13-Aug. 7, 9:00 a.m.-4:00 p.m. LL114 | Forbes/Wahle Morford |
| An integrated four-week workshop in educational leadership. Includes theoretical and practical study of leadership in educational institutions. Required first course in the Ed.D. program. Permission of Instructor. | | |

Eight-Week Term: June 22-August 14

| | | |
|--|---|-----------------|
| Ed 491 SN01 | Japan and the West (5) 8-week, MW, 5:30-9:00 p.m. | Taylor P 305 |
| An interdisciplinary study of the Japanese culture, its values, habits of thought, and fundamental assumptions about reality as seen in its cultural products, including language and literature, fine arts, pop culture, business structures, and social institutions. Guest lecturers, Japanese and American. Also offered under En 391 SD01 and Bus 391 SA01. | | |

CLASSES

| Course/Section | Description/Credit Session/Time | Instructor Building/Room | Course/Section | Description/Credit Session/Time | Instructor Building/Room |
|---|--|--------------------------|---|--|--------------------------|
| Ed 491 SO01 | Approaches to Romantic Literature (5) 7-week, June 22-August 7, Daily, 9:10-10:20 a.m. | MacLean P 351 | Ed 557 50 | Counseling Independent Study (1-3) 8-week, Arranged | O'Connor/Owen Arr |
| An examination of the prose and poetry of the romantic period with special emphasis on teaching approaches. Also offered under En 491 SA01. | | | Intensive reading and field research in a topic agreed upon by adviser and student. 30 hours work per credit. Graduate students only. Prerequisite: Permission of adviser. | | |
| Ed 497 50 | Independent Study (1-6) 8-week, Arranged | Denoon Arr | Ed 560 01 | Family Counseling (3) 8-week, Wednesday, 4:20-6:50 p.m. | Bestock P 455 |
| Ed 510 01 | Fundamental Counseling Skills (3) 8-week, TTh, 9:10-11:10 a.m. | Haney P 454 | Demonstration/discussion focusing on dysfunctional families including theoretical and practical applications. Prerequisite: Ed 551 01. | | |
| Focus on basic counseling skill training through intensive small group practice. Complements Ed 511, Counseling Theories, though they need not be taken concurrently. Three one-hour counseling lab sessions. | | | Ed 561 SB01 | Family Counseling Practicum (3) 8-week, Wednesday, 7:15-10:00 p.m. | Bestock P 455 |
| Ed 512 01 | Career Counseling and Informational Sources (3) 8-week, Tuesday, 7:00-10:00 p.m. | Crow P 455 | This course is a continuation of Ed 560. There will be consultation, readings, and discussion focused on each student's current work with a client family. Prerequisites: Ed 560, client family, permission of instructor. | | |
| Study of vocational development. Exploration of educational, social, vocational, and referral sources. | | | Ed 564 01 | Counseling Internship I (4) 8-week, Tuesday, 4:20-6:50 p.m. | O'Connor P 456 |
| Ed 517 01 | Group Counseling: Theories and Practice (3) 8-week, TTh, 9:10-11:10 a.m. | Afanador P 353 | Supervised experiences in a school or agency. Taken in final two to three quarters of graduate program with permission and application made two quarters earlier. On-campus seminar required first and second quarters. | | |
| Emphasizes group counseling theory. Provides group experiences, including required 10-hour marathon to integrate theory and practice. Discusses possible applications. Prerequisites: Ed 510, 511. | | | Ed 565 01 | Counseling Internship II (4) 8-week, Tuesday, 4:20-6:50 p.m. | Gordon P 455 |
| Ed 527 01 | Counseling Tests and Measurement (3) 8 week, Monday, 5:00-8:00 p.m. | Calsyn P 455 | Ed 566 01 | Counseling Internship III (3) 8-week, Arranged | Owen Arr |
| Familiarization with measurements, concepts and commonly used tests. Extra lab time required. Prerequisite: Ed 506. | | | Ed 590 01 | Administrative Internship I (3) 8-week, Arranged | Barker Arr |
| Ed 537 50 | Curriculum Independent Study (1-4) 8-week, Arranged | Haggerty/Guest/Hilton | Ed 591 01 | Administrative Internship II (3) 8-week, Arranged | Barker Arr |
| Library research in curriculum. Approximately 30 hours of reading and allied assignments per credit. Reports will include analysis and critical appraisal of materials read. Prerequisite: Permission of adviser. | | | Ed 592 01 | Administrative Internship III (3) 8-week, Arranged | Barker Arr |
| Ed 539 01 | Curriculum Graduate Project (3) 8-week, Arranged | Haggerty/Guest/Hilton | Ed 596 01 | Administrative Graduate Project (3) 8-week, Arranged | Barker Arr |
| Scholarly graduate project designed to improve some aspect of education. Prerequisite: Graduate core requirements and approval of adviser. | | | Scholarly graduate project designed to improve some aspect of professional assignment. Prerequisites: Graduate core requirements and approval of coordinator. | | |
| Ed 547 01 | Diagnosis and Prescription (3) 8-week, MW, 1:10-3:10 p.m. | Staff P 456 | Ed 597 50 | Administrative Independent Study (1-3) 8-week, Arranged | Barker Arr |
| Comparison of various methods used in the diagnosis of learning problems. Selection, administration and analysis of tests, plus writing educational prescriptions. Prerequisite: Ed 424. | | | Intensive library research. Approximately 30 hours of reading and allied assignments for each credit. Completion reports will include analysis and critical appraisal of materials read. Prerequisite: Permission of adviser. | | |
| Ed 551 01 | Counseling Practicum (3) 8-week, Thursday, 4:00-8:00 p.m. | Bestock P 455 | Ed 605 50 | Independent Study in Educational Leadership (1-5) 8-week, Arranged | Forbes/Wahle Arr |
| Supervised counseling experience wherein the counselor candidate is responsible for actual counseling cases with supervision. Limited enrollment. Prerequisites: Ed 510 and Ed 511. Graduate students only. | | | Permission of instructor. | | |
| Ed 555 50 | Practicum: Special Education (3-6) 8-week, Arranged | Hilton Arr | Ed 606 50 | Independent Study in Educational Leadership (1-5) 8-week, Arranged | Forbes/Wahle Arr |
| Diagnostic and prescriptive teaching with children who have learning or behavior problems. Laboratory course. Permission of instructor. | | | Permission of instructor. | | |
| | | | Ed 607 50 | Independent Study in Educational Leadership (1-5) 8-week, Arranged | Forbes/Wahle Arr |
| | | | Permission of instructor. | | |

CLASSES

| Course/Section | Description/Credit Session/Time | Instructor Building/Room |
|---------------------------|--|--------------------------------------|
| Ed 608 50 | Internship in Educational Leadership (1-9) 8-week, Arranged | Forbes/Wahle Arr |
| Permission of instructor. | | |
| Ed 610 50 | Doctoral Project Educational Leadership (1-14) 8-week, Arranged | Morford/Wahle Forbes/Staff Arr |
| Ed 613 01 | Project Continuation (0) 8-week, Arranged | Morford Arr |
| Ed 649 01 | Doctoral Enrollment (0) Arranged | Morford Arr |

Engineering

Mechanical Engineering

| | | |
|--|--|---------------------|
| EML 210 01 | Statics (5) 8-week, Daily, 9:20-10:20 a.m. | Wiedemeier E 114 |
| Force and Moment equilibrium, distributed forces, friction, virtual work. Prerequisites: Mt 135 and Ph 200. | | |
| EML 230 01 | Dynamics (5) 8-week, Daily, 9:20-10:20 a.m. | Gehlen E 111 |
| Kinematics and kinetics of particles, systems of particles, and rigid bodies. Impulse-Momentum, Work-Energy. Prerequisites: EML 210 and Mt 136. | | |
| EML 350 01 | Materials Science (5) 8-week, Daily, 10:30-11:30 a.m. | Gehlen E 111 |
| Atomic Structure. Metallic bond. Structure of metals and non-metals. Equilibrium diagrams. Time-dependent transformations. Relation of structure to properties. Elastic and plastic deformation. Prerequisites: ECL 321. | | |

English

| | | |
|--|---|------------------|
| En 110 01 | Freshman English (5) 7-week, Daily, 7:50-9:00 a.m. | Tadie LA 202 |
| Study and practice in written expression with attention to grammar, standard usage, and the rhetoric of argument in formal prose. Pedagogy: the writing of essays modeled on readings from eminent authors, past and present. | | |
| En 132 01 | American Literature (5) 7-week, Daily, 7:50-9:00 a.m. | Spiers LA 223 |
| Survey of American Literature from beginning to 20th Century. | | |
| En 175 01 | Introduction to Literature (5) 7-week, Daily, 10:30-11:40 a.m. | Spiers LA 223 |
| An introduction to the major types of literature: the short story, poetry, the essay, the play; historical development and cultural background of these genres. | | |
| En 291 SA01 | G.K.Chesterton and C.S.Lewis: Literature of Religion and Romance (5) 7-week, Daily, 10:30-11:40 a.m. | Tadie LA 202 |
| These two popular 20th century authors wrote voluminously and in many forms: the novel, poetry, literary history, social commentary, apologetics, and fantasy. Students will participate in a conference on Chesterton and Lewis. They will hear and meet some of the most important Chesterton and Lewis scholars from America, Canada, and Europe. Also offered under En 391 SA01. | | |

| | | |
|--|---|--------------------|
| En 391 SA01 | G.K.Chesterton and C.S.Lewis: Literature of Religion and Romance (5) 7-week, Daily, 10:30-11:40 a.m. | Tadie LA 202 |
| Students enrolled in this course will prepare a research paper on either Chesterton or Lewis. See En 291 SA01 for description. | | |
| En 391 SB01 | Autobiographies: Narrative Modes of Self-Presentation (5) 8-week, TTh, 5:30-8:00 p.m. | Sullivan LA 207 |
| We examine autobiographies as literary and personal statements. Class discussions will center on three modes of self-presentation: historical self-expression, philosophical self-analysis, and poetic self-expression. Also offered under Sph 391 SA01. | | |
| En 391 SC01 | Religious Experience in Autobiography and Story (5) 7-week, MTTh, 5:30-7:30 p.m. | Leigh LA 206 |

A study of religious experience as expressed in stories and autobiographies by major religious thinkers such as Augustine, Merton, C.S. Lewis, Chesterton, Flannery O'Connor, Dorothy Day. Also offered under RS 293 SA01.

| | | |
|---|---|------------------|
| En 391 SD01 | Japan and the West (5) 7-week, Daily, 9:10-10:20 a.m. | Taylor P 305 |
| An interdisciplinary study of the Japanese culture, its values, habits of thought and fundamental assumptions about reality as seen in its cultural products, including language and literature, fine arts, pop culture, business structures, and social institutions. Guest lecturers, Japanese and American. Of interest to anyone wanting to learn about the Japanese culture, or anyone planning to deal directly with Japanese people or institutions. Also offered under Ed 491 SN01 and Bus 391 SA01 | | |
| En 488 01 | Film and Literature (5) 7-week, Daily, 11:50 a.m.-1:00 p.m. | Taylor LA 208 |
| Introduction to film art. This course's primary goal is to help the student to see, understand, enjoy, and judge films more effectively, with assurance and validity. | | |
| En 491 SA01 | Approaches to Romantic Literature (5) 7-week, Daily, 9:10-10:20 a.m. | MacLean P 351 |
| Examination of the prose and poetry of the Romantic period with special emphasis on teaching approaches. Also offered under Ed 491 SO01. | | |

Fine Arts

Art

| | | |
|---|---|-----------------|
| Art 491 SA01 | Japanese Calligraphy (2) Second, TTh, 1:10-3:25 p.m. | Thiel Bu 106 |
| Designed for beginning and continuing students. Comprises the aesthetics, history, and techniques of this art form. Three styles will be used to demonstrate works of ancient masters. Experience in Japanese not required. No auditors except by permission of Instructor. | | |

Drama

| | | |
|--|--|----------------|
| Dr 491 SA01 | Video Profiles (5) Second, Daily, 8:00-10:00 a.m. | Dore Bu 119 |
| Designed for people who will appear in public in various roles and situations; interviews, group discussions, panels, and demonstrations. Students will be videotaped so they may study themselves and evaluate the effectiveness of their appearance. | | |

CLASSES

| Course/Section | Description/Credit Session/Time | Instructor Building/Room |
|----------------|---------------------------------|--------------------------|
|----------------|---------------------------------|--------------------------|

Music

| | | |
|-----------|--|------------------|
| Mu 110 50 | *Piano Lessons (1-2) 7-week, Arranged | Barnes Arr |
| Mu 111 50 | *Voice Lessons (1-2) 7-week, Arranged | Schneider Arr |
| Mu 123 50 | *Classic Guitar Lessons (1-2) 7-week, Arranged | Smith, W. Arr |
| Mu 125 50 | *Organ/Harpsichord Lessons (1-2) 7-week, Arranged | Olson Arr |
| Mu 310 50 | *Piano Lessons (1-2) 7-week, Arranged | Barnes Arr |
| Mu 311 50 | *Voice Lessons (1-2) 7-week, Arranged | Schneider Arr |

*Contact Instructor or Fine Arts Department office before beginning of term to schedule lessons. Classes are credit/no credit. No auditors. \$35.00 per credit hour additional fee.

Foreign Languages

| | | |
|-----------|--|-----------------------|
| Fr 115 01 | French Language I, II, III (15) 8-week, Daily, 8:00-11:30 a.m. | Dozer/Milan LA 208 |
| Fr 125 01 | | |
| Fr 135 01 | | |
| Sp 115 01 | Spanish Language I, II, III (15) 8-week, Daily, 8:00-11:30 a.m. | Plaza/Staff LA 206 |
| Sp 125 01 | | |
| Sp 135 01 | | |

These intensive 15 credit programs are taught by skilled specialists in foreign languages. The courses enable the student to understand, speak, read, write, and think in the language taught, within a limited vocabulary. These courses take the beginning student through the first year of college French or Spanish in one quarter.

| | | |
|-------------|---|------------------|
| FI 191 SA01 | Introduction to Japanese (5) 8-week, TTh, 5:30-8:00 p.m. | Kajita LA 208 |
|-------------|---|------------------|

This class is especially valuable for travellers to Japan, people with Japanese business contacts, or students desiring basic conversational skills. The textbook, language tape, and in-class instruction are designed to give the student basic skills in simple conversation, as well as in reading and writing phonetic Hiragana.

General Science

| | | |
|--------------|--|-----------------------------------|
| ISC 291 SA01 | Principles of Geology (5) 8-week, Daily, 10:30-11:30 a.m. | Smith, R. E 101 Core Option |
|--------------|--|-----------------------------------|

Study of the principles of modern geology with consideration of both the physical and historical aspects. Topics will include: modern Plate theory, tectonics, uniform processes, and the Fossil Record. Arranged field trips on weekends.

History

| | | |
|-----------|---|------------------------------|
| Hs 104 01 | Western Civilization I (5) 7-week, Daily, 10:30-11:40 a.m. | Mann E 118 Core Option |
|-----------|---|------------------------------|

The development of Western civilization from prehistoric times to the 18th century.

| Course/Section | Description/Credit Session/Time | Instructor Building/Room |
|----------------|---------------------------------|--------------------------|
|----------------|---------------------------------|--------------------------|

| | | |
|---|--|-------------------------------|
| Hs 105 01 | Western Civilization II (5) 7-week, Daily, 8:00-9:00 a.m. | Parry P 305 Core Option |
| Development of Western civilization from the 18th to the late 20th century. | | |
| Hs 281 01 | Survey of Far East (5) 7-week, Daily, 9:10-10:20 a.m. | Mann P 305 Core Option |
| Domestic and international development of China, Japan, and the states of Southeast Asia. | | |
| Hs 315 01 | 20th Century Europe (5) 7-week, Daily, 10:30-11:40 a.m. | Parry P 305 |
| Contemporary movements and institutions in the post-modern world. | | |
| Hs 341 01 | Pacific Northwest (5) 7-week, Daily, 9:10-10:20 a.m. | Saltvig P 306 |
| Past development and present problems of the Pacific Northwest with emphasis on Washington State. | | |

| | | |
|--|---|----------------|
| Hs 492 SA01 | Leadership in History: Orient and West (5) TTh, July 21, 23, 27, 31, August 4, 6, 11, 13, 3:30-5:30 p.m. plus Saturday, Sunday day-long seminars August 1, 2 and 8, 9. | Mann Ma 144 |
| An examination in a historical setting, in its perception of itself, other, and the norms and sources of leadership. Prerequisite: Permission of Instructor. | | |
| Hs 497 50 | Independent Study (1-5) Arranged | Staff Arr |

Institute for Theological Studies Graduate Courses (ITS courses formerly CORPUS)

| | | |
|------------|---|-----------------|
| ITS 506 01 | Christian Ethics (3) June 22-July 18, MTWTh, 9:00-10:50 a.m. | George P 306 |
|------------|---|-----------------|

A study of the dynamics of moral development, and principles of Christian moral action; the development of a methodology for addressing personal and social moral issues. Permission of Director.

| | | |
|------------|---|--------|
| ITS 539 01 | Contemporary Ethical Issues (3) Staff June 22-July 18, MTWTh, 10:00-11:50 a.m. (3) | LA 325 |
|------------|---|--------|

Analysis and discussion of selected topics in the areas of morality and ethics in the light of the Christian perspective. Special attention to how the interpretation of Christian believing and historical contexts shape Christian ethics and how past resolutions of problems continue to shape our ethics today.

| | | |
|------------|-------------------------------------|--------------|
| ITS 596 50 | Independent Study (3-6) Arranged | Staff Arr |
|------------|-------------------------------------|--------------|

| | | |
|------------|-------------------------------------|--------------|
| ITS 597 50 | Independent Study (3-6) Arranged | Staff Arr |
|------------|-------------------------------------|--------------|

| | | |
|------------|------------------------------------|--------------|
| ITS 599 50 | Graduate Project (3-6) Arranged | Staff Arr |
|------------|------------------------------------|--------------|

CLASSES

| Course/Section | Description/Credit Session/Time | Instructor Building/Room |
|----------------|---------------------------------|--------------------------|
|----------------|---------------------------------|--------------------------|

SUMORE

| | | |
|-------------|---|----------------------|
| ITSS 502 01 | Theologies of the New Testament (3) July 6-17, Daily, 9:00-11:50 a.m. | LaVerdiere LA 305 |
|-------------|---|----------------------|

The nature of revelation and inspiration; the process of New Testament composition and the means to recover its message; historical backgrounds of the communities and theologies of the writers. Permission of Director.

| | | |
|-------------|---|---------------------|
| ITSS 503 01 | Christian Anthropology (3) July 20-31, Daily, 9:00-11:50 a.m. | Rolheiser LA 305 |
|-------------|---|---------------------|

An exploration of the dynamic relationship between God and humankind. A study of Grace in its personal and social manifestations, understood in historical and contemporary contexts, and a treatment of sin within this understanding of Grace. Permission of Director.

| | | |
|-------------|--|----------------|
| ITSS 504 01 | Christology (3) June 23-July 3, Daily, 9:00-11:50 a.m. | Hart Ba 102 |
|-------------|--|----------------|

A survey of theological reflection on Jesus, his life, his teaching, his death-resurrection. Examines the New Testament, the Fathers, the important conciliar definitions, the scholastic synthesis and contemporary discussion and covers three questions: Who is this man? How does he save us? How do we relate to him now? Permission of Director.

| | | |
|-------------|---|--------------------|
| ITSS 505 01 | The Church as Community (3) August 3-14, Daily, 9:00-11:50 a.m. | Padovano LA 305 |
|-------------|---|--------------------|

Biblical, historical and theological reflection on the meaning of the Church and its mission. Permission of Director.

| | | |
|-------------|--|------------------|
| ITSS 506 01 | Christian Ethics (3) August 3-14, Daily, 9:00-11:50 a.m. | Gudorf LA 221 |
|-------------|--|------------------|

Christian approaches to personal and social morality, especially in the Roman Catholic tradition. Issues of method, including contemporary challenges to the moral tradition; human work and ethical issues surrounding work. Permission of Director.

| | | |
|-------------|---|---------------------|
| ITSS 510 01 | Christian Self Image (3) June 23-July 3, Daily, 9:00-11:50 a.m. | Francoeur LA 305 |
|-------------|---|---------------------|

An analysis of the development and ongoing clarification of our self image as it is dynamically influenced by conscience, the presence of God and Christian community. Permission of Director.

| | | |
|-------------|--|--------------------|
| ITSS 512 01 | Liturgy and Worship (2) July 6-16, MTh, 6:30-9:00 p.m. | Empereur LA 305 |
|-------------|--|--------------------|

Liturgical theology and major issues in contemporary liturgical renewal. Present situation in liturgical living, models of theology of worship, social justice, and inculturation; liturgical planning, ritual, symbol, spirituality, and the sacraments. Permission of Director.

| | | |
|-------------|--|-------------------------------|
| ITSS 516 01 | Spiritual Direction (2) July 20-31, Daily, 9:30-11:30 a.m. | Carroll/ Dyckman LA 224 |
|-------------|--|-------------------------------|

What spiritual direction is, and is not; its relation to psychological counseling; assumptions of the director regarding human/spiritual growth and prayer; discernment; sexuality and spirituality; universal call to mysticism and prophecy. Permission of Director.

| | | |
|-------------|---|---------------------------------|
| ITSS 522 01 | Justice Ministry (3) July 20-31, Daily, 9:00-11:50 a.m. | McGinnis /McGinnis LA 221 |
|-------------|---|---------------------------------|

Meaning and implications of social justice for ministries, principles in the formation of a social conscience and consciousness, a spirituality of justice, cultural obstacles and strategies for attitudinal change and the social

| Course/Section | Description/Credit Session/Time | Instructor Building/Room |
|----------------|---------------------------------|--------------------------|
|----------------|---------------------------------|--------------------------|

mission of the Christian family. Focus on selected contemporary problems. Permission of Director.

| | | |
|-------------|--|-------------------|
| ITSS 532 01 | Theories of Religious Education (3) July 20-31, Daily, 9:00-11:50 a.m. | Zappone LA 220 |
|-------------|--|-------------------|

Consideration of the nature and content of religious education through critical examination of selected contemporary theorists and an historical examination of the emergence of religious education as a discipline. Special attention to developmental research that assists the religious education process. Permission of Director.

| | | |
|-------------|--|-------------------------|
| ITSS 552 01 | Interpersonal Process (2) June 23-July 3, T-F/M-Th, 2:00-4:30 p.m. | Ferder/Heagle LA 305 |
|-------------|--|-------------------------|

Introducing the student to awareness of self and others. Development of listening skills; examination of barriers to effective interpersonal communication; constructive use of feedback and empathetic response; developing basics for community support system. SUMORE students only.

| | | |
|-------------|--|----------------------------|
| ITSS 553 01 | Conflict Resolution (2) June 23-July 3, T-F/M-Th, 2:30-4:30 p.m. | Rochelle-Stevens LA 224 |
|-------------|--|----------------------------|

Become more effective in negotiating the large and small daily conflicts in your professional and personal lives. Includes theory input, interpersonal sharing and skill-building, and awareness exercises. SUMORE students only.

| | | |
|-------------|--|------------------|
| ITSS 554 01 | Leadership and Organization (2) June 29-July 9, M-Th, 2:00-4:30 p.m. | Wilson LA 221 |
|-------------|--|------------------|

Deals with leadership styles, various approaches to dealing with people, organizational functioning, team building as it applies to healthy group interaction. SUMORE students only.

| | | |
|-------------|--|---|
| ITSS 556 01 | Pastoral Counseling (3) July 6-17, Daily, 8:30 a.m.-12:00 p.m. | Wemhoff/Steig /Boyd/Smith LA 220, 221, LA 222, 224 |
|-------------|--|---|

This course integrates basic helping skills with theological foundations for counseling ministry. The course is structured in two parts: lecture and lab practicum. SUMORE students only.

| | | |
|-------------|---|--------------|
| ITSS 580 01 | Completion Project (3) Arranged | Staff Arr |
|-------------|---|--------------|

| | | |
|-------------|--|-----------------|
| ITSS 587 01 | Practicum I (2) July 20-31, MTTh, 2:00-4:00 p.m. | Staff LA 220 |
|-------------|--|-----------------|

Helps those involved in various ministries to determine areas for personal growth. A holistic-growth plan is introduced and used as the basis for a growth-covenant. SUMORE students only.

| | | |
|-------------|--|-----------------|
| ITSS 588 01 | Practicum II (2) July 6-17, 2:00-4:00 p.m., MTTh | Staff LA 220 |
|-------------|--|-----------------|

Consists of a process to help formulate professional goals which, with the aid of a mentor, will enhance the performance of ministry. Permission of Director. SUMORE students only.

| | | |
|---------------|--|-------------------|
| ITSS 591 SA01 | Spirituality (2) July 20-30, MTWTh, 2:00-4:30 p.m. | Fischer LA 221 |
|---------------|--|-------------------|

Draws on biblical, classical, and contemporary writers. An exploration of the characteristics of a spirituality that sustains the many forms of Christian ministry. Themes to be covered include: compassion, contemplation, imagination, power, courage, and healing. Permission of Director. SUMORE students only.

CLASSES

| Course/Section | Description/Credit Session/Time | Instructor Building/Room |
|----------------|---------------------------------|--------------------------|
|----------------|---------------------------------|--------------------------|

| | | |
|-------------|-------------------------------------|--------------|
| ITSS 596 50 | Independent Study (1-6) Arranged | Staff Arr |
|-------------|-------------------------------------|--------------|

Mathematics

| | | |
|-----------|--|----------------------|
| Mt 118 01 | College Algebra for Business (5) 7-week, Daily, 10:30-11:40 a.m. | Mirbagheri Ba 304 |
|-----------|--|----------------------|

Required in Business Program. Prerequisite: Mt 101 or equivalent.

| | | |
|-----------|--|-----------------|
| Mt 130 01 | Elements of Calculus for Business (5) 7-week, Daily, 10:30-11:40 a.m. | Yandl Ba 402 |
|-----------|--|-----------------|

Continuation of Mt 118, required in Business Program: a short course in calculus with business applications. Prerequisite: Mt 130.

| | | |
|-----------|---|-----------------|
| Mt 136 01 | Calculus and Analytic Geometry III (5) 7-week, Daily, 7:50-9:00 a.m. | Yandl Ba 401 |
|-----------|---|-----------------|

Indeterminate forms, improper integrals, infinite series, Taylor's Theorem, vectors, polar coordinates, solid analytic geometry. Prerequisite: Mt 135.

| | | |
|-----------|--|---------------------|
| Mt 222 01 | Discrete Structures (5) 7-week, Daily, 10:30-11:40 a.m. | Mills, J. Ba 301 |
|-----------|--|---------------------|

Logic, set theory, Boolean algebra, algebraic structures, graph theory and combinatorics; introductions to abstract machines and formal languages; compatibility concepts. Emphasis on applications to computer science. Prerequisite: Mt 135.

| | | |
|-----------|---|-----------------|
| Mt 232 01 | Multivariable Calculus (3) 7-week, MTTh, 11:50 a.m.-1:00 p.m. | Staff Ba 402 |
|-----------|---|-----------------|

Partial derivatives, multiple integration and applications. Prerequisite: Mt 136.

| | | |
|-----------|--|----------------------|
| Mt 233 01 | Linear Algebra (3) 7-week, MTTh, 7:50-9:00 a.m. | Mirbagheri Ba 202 |
|-----------|--|----------------------|

Matrices, determinants, vector spaces, linear transformation, eigenvalues. Prerequisite: Mt 136.

Military Science

| | | |
|-----------|-------------------------------|-----------------|
| MS 314 01 | Advanced Camp (4) Arranged | Anderson NOC |
|-----------|-------------------------------|-----------------|

A six-week training program at Fort Lewis during which students are evaluated on their demonstrated leadership potential. Permission of instructor.

| | | |
|-----------|---------------------------------------|-----------------|
| MS 315 01 | Advanced Camp-Nursing (4) Arranged | Anderson NOC |
|-----------|---------------------------------------|-----------------|

A six-week training program in two phases which includes a five-week program in an Army hospital.

Philosophy

| | | |
|-----------|---|--------------------------|
| PI 110 01 | Philosophical Problems: World (5) 7-week, Daily, 9:10-10:20 a.m. | Risser LA 202 Core |
|-----------|---|--------------------------|

A combined historical and problematic approach to the nature of philosophical inquiry. An introduction to fundamental philosophical problems of being, language, logic, knowledge, reality, human existence, and God.

| Course/Section | Description/Credit Session/Time | Instructor Building/Room |
|----------------|---------------------------------|--------------------------|
|----------------|---------------------------------|--------------------------|

| | | |
|-----------|--|-------------------------|
| PI 110 02 | Philosophical Problems: World (5) 7-week, Daily, 10:30-11:40 a.m. | Staff LA 202 Core |
|-----------|--|-------------------------|

| | | |
|-----------|---|----------------------------|
| PI 110 03 | Philosophical Problems: World (5) 8-week, MW, 5:30-8:00 p.m. | Bjelland LA 202 Core |
|-----------|---|----------------------------|

| | | |
|-----------|--|-----------------------------|
| PI 220 01 | Philosophical Problems: The Human Person (5) 7-week, Daily, 9:10-10:20 a.m. | Reichmann LA 203 Core |
|-----------|--|-----------------------------|

Systematic study of the nature and powers of the human person. Special emphasis on the problems of human knowing, freedom, and responsibility.

| | | |
|-----------|---|-------------------------|
| PI 220 02 | Philosophical Problems: The Human Person (5) 7-week, Daily, 10:30-11:40 a.m. | Burke LA 203 Core |
|-----------|---|-------------------------|

| | | |
|-----------|--|-----------------------------|
| PI 220 03 | Philosophical Problems: The Human Person (5) 7-week, Daily, 11:50 a.m.-1:00 p.m. | Dickerson LA 203 Core |
|-----------|--|-----------------------------|

| | | |
|-----------|---|----------------------------|
| PI 220 04 | Philosophical Problems: The Human Person (5) 8-week, TTh, 5:30-8:00 p.m. | Bjelland LA 202 Core |
|-----------|---|----------------------------|

| | | |
|-----------|---|----------------------------------|
| PI 250 01 | Ethics (5) 7-week, Daily, 7:50-9:00 a.m. | Harkins LA 203 Core Option |
|-----------|---|----------------------------------|

A study of the general theory of moral behavior; ethics as a science. It is concerned with the goal of human life, and the human act which is a study of the proper means to attain it. A study of the nature of conscience, and its proper formation with principles drawn from the natural law. These general principles will be applied to all aspects of life.

| | | |
|-----------|--|-----------------------------------|
| PI 250 02 | Ethics (5) 7-week, MWF, 8:25-10:20 a.m. | Stikkors LA 204 Core Option |
|-----------|--|-----------------------------------|

| | | |
|-----------|--|----------------------------------|
| PI 255 01 | Medical Ethics (5) 7-week, Daily, 11:50 a.m.-1:00 p.m. | Deltete LA 204 Core Option |
|-----------|--|----------------------------------|

Application of general ethical theory to basic problems encountered in the medical profession; fees, professional secrecy, rights of patients, abortion, transplants, drugs.

| | | |
|-----------|--|---------------------------------|
| PI 260 01 | Logic I (5) 7-week, Daily, 10:30-11:40 a.m. | Risser LA 204 Core Option |
|-----------|--|---------------------------------|

Systematic treatment of traditional logic.

| | | |
|-----------|--|------------------------------------|
| PI 324 01 | Philosophy of Religion (5) 7-week, Daily, 10:30-11:40 a.m. | Dickerson LA 205 Core Option |
|-----------|--|------------------------------------|

Critical assessment of some of the foremost arguments for and against the existence of God. Discussion of the relation between the concept of God and the concept of ethical value, human will and responsibility, human knowing, the nature and immortality of the soul, and the problem of evil.

| | | |
|-----------|---|-----------------------------------|
| PI 337 01 | Social and Political Philosophy (5) 7-week, MWF, 11:50 a.m.-1:45 p.m. | Stikkors LA 202 Core Option |
|-----------|---|-----------------------------------|

This course focuses on the theme: the Individual and Community. It examines what various contemporary philosophers have described as the rise of mass conformity and social disintegration in the present-day West and what they prescribe for the reemergence of genuine individuality and community.

CLASSES

| Course/Section | Description/Credit Session/Time | Instructor Building/Room |
|----------------|---------------------------------|--------------------------|
|----------------|---------------------------------|--------------------------|

| | | |
|-------------|--|-----------------|
| PI 493 SA01 | Phenomenology of Loving (5) 7-week, Daily, 9:10-10:20 a.m. | Burke LA 205 |
|-------------|--|-----------------|

A phenomenological analysis of the "yes" of loving and its creativity relative to the freedom, forgiveness, sexuality, and death of self and beloved.

| | | |
|-----------|-------------------------------------|--------------|
| PI 497 50 | Independent Study (1-5) Arranged | Staff Arr |
|-----------|-------------------------------------|--------------|

Physics

| | | |
|-----------|--|------------------------------------|
| Ph 110 01 | Astronomy of the Solar System (5) 7-week, Daily, 10:30-11:40 a.m. | Toutonghi Ba 401 Core Option |
|-----------|--|------------------------------------|

A non-mathematical survey of the motions and properties of the members of the Solar System.

| | | |
|-----------|--|-------------------------------|
| Ph 200 01 | Mechanics (5) 8-week, MTThF, 8:00-9:00 a.m. Laboratory: Tuesday, 2:10-5:00 p.m. | Toutonghi Ba 301 Ba 307 |
|-----------|--|-------------------------------|

Physics for students of science and engineering. Prerequisite: Mt 134.

| | | |
|-----------|---|-------------------------|
| Ph 201 01 | Electricity and Magnetism (5) 8-week, MTThF, 9:20-10:20 a.m. Laboratory: Wednesday, 2:10-5:00 p.m. | Guy Ba 301 Ba 305 |
|-----------|---|-------------------------|

Physics for students of science and engineering. Prerequisites: Ph 200 and Mt 135.

| | | |
|-----------|--|-------------------------|
| Ph 202 01 | Waves, Optics and Thermodynamics (5) 8-week, MTThF, 11:50 a.m.-12:50 p.m. Laboratory: Thursday, 2:10-5:00 p.m. | Guy Ba 301 Ba 306 |
|-----------|--|-------------------------|

Physics for students of science and engineering. Prerequisites: Ph 201 and Mt 136.

Political Science

| | | |
|------------|---|------------------------|
| Pls 100 01 | American National Government (5) 7-week, TTh, 5:30-7:40 p.m. | Hogan/Sperry LA 207 |
|------------|---|------------------------|

The structure and public policy functions of the national government, with emphasis on the Reagan Administration's impact on the American system.

| | | |
|------------|---|------------------|
| Pls 260 01 | Introduction to International Politics (5) 7-week, Daily, 7:50-9:00 a.m. | Schulz LA 205 |
|------------|---|------------------|

Analysis of the East/West and North/South conflicts from various national and ideological perspectives.

| | | |
|------------|---|----------------------|
| Pls 330 01 | Soviet Union (5) 7-week, TTh, 5:30-7:40 p.m. | Scharf, B. LA 205 |
|------------|---|----------------------|

Non-ideological view of Soviet digarchic rule. Party-State relations in the context of cultural limitations and socialist goals, social changes, economic dilemmas, ethnic conflict, law, dissent, and public welfare.

| | | |
|--------------|--|------------------|
| Pls 491 SA01 | African Politics (5) 7-week, Daily, 9:10-10:20 a.m. | Schulz LA 307 |
|--------------|--|------------------|

Seminar: Discussion of history of colonialism, the slave trade, roots of underdevelopment, various development strategies, African socialism, military coups and one-party systems. Special section on South Africa.

Psychology

| | | |
|------------|---|------------------|
| Psy 201 01 | Statistics (5) 7-week, Daily, 7:50-9:00 a.m. | Gaffney P 352 |
|------------|---|------------------|

Basic descriptive and inferential statistics: central tendency, variability, correlation, and regression.

| | | |
|------------|--|------------------------|
| Psy 315 01 | Abnormal Psychology (5) 7-week, Daily, 10:30-11:40 a.m. | Staff P 351 Core |
|------------|--|------------------------|

Understanding the behavior of persons labelled as having psychological problems with emphasis on the context of family. Discussion of treatment approaches and the change process. Prerequisite: Psy 100.

| | | |
|------------|--|-------------------------|
| Psy 322 01 | Psychology of Growth and Development (5) 7-week, Daily, 9:10-10:20 a.m. | Young LA 223 Core |
|------------|--|-------------------------|

Human development over the life span. Stages of growth. Conditions necessary for maximizing the potential of the individual. Prerequisite: Psy 100.

| | | |
|------------|--|------------------------|
| Psy 427 01 | Introduction to Counseling (5) 7-week, MW, 5:30-8:10 p.m. | Rowe LA 307 Core |
|------------|--|------------------------|

Basic theory, principles and dynamics of the counselor-client relationship and the counseling process. Prerequisites: Psy 100 and permission of Instructor.

| | | |
|------------|--|------------------------|
| Psy 461 01 | Theory of Group Dynamics (2) 7-week, MW, 1:10-3:50 p.m. | Rowe LA 203 Core |
|------------|--|------------------------|

General overview of the theory of group process. Concurrent with Psy 462. Prerequisite: Psy 100.

| | | |
|------------|--|------------------------|
| Psy 462 01 | Experience of Group Dynamics (3) 7-week, MW, 1:10-3:50 p.m. | Rowe LA 203 Core |
|------------|--|------------------------|

Explore aspects of group process and dynamics via an experiential group. Concurrent with Psy 461. Prerequisite: Psy 100.

| | | |
|------------|--|---------------------------------|
| Psy 490 01 | Symposium on Alcoholism (3) June 22-July 2, Daily, 9:00 a.m.-4:00 p.m. | Schnell/Royce Kurtz P 401 |
|------------|--|---------------------------------|

Survey on alcoholism with special emphasis on spirituality. Alcoholism: nature, causes, diagnosis, prevention and recovery. Spiritual programs for recovery. Also offered under Alc 400 01 and Ed 491 SJ01.

| | | |
|--------------|--|----------------|
| Psy 491 SA01 | Alcoholics Anonymous: Recovery as Spiritual Path (1) June 25-26, Daily, 11:00 a.m.-4:00 p.m. | Kurtz P 401 |
|--------------|--|----------------|

History and evolution of A.A. as a model for a spiritual path for recovery from addiction. Will meet with Alc 400. Prerequisite: Alc400 or permission of Director. Also offered under Alc 491 SA01 and Ed 491 SG01.

| | | |
|------------|---|--------------|
| Psy 496 50 | Independent Study (2-5) Arranged. For majors only. | Staff Arr |
|------------|---|--------------|

| | | |
|------------|---|---------------|
| Psy 543 01 | Basic Practicum in Therapeutic Psychology (6) 8-week, Arranged | Gerber Arr |
|------------|---|---------------|

Minimum 200 hours each of on-site supervised practicum experience in agencies providing psychological services. Majors only.

| | | |
|------------|-------------------------------------|--------------|
| Psy 596 50 | Independent Study (1-3) Arranged | Staff Arr |
|------------|-------------------------------------|--------------|

CLASSES

| Course/Section | Description/Credit Session/Time | Instructor Building/Room |
|----------------|---------------------------------|--------------------------|
|----------------|---------------------------------|--------------------------|

Public Service

| | | |
|--|---|-----------------------------|
| Pub 349 01 | Collective Bargaining (5) 8-week, MW, 5:30-8:00 p.m. | Sawyer LL 112/406 |
| History and statutory requirements, dynamics, and strategies of labor-management relations. Simulation of a realistic collective bargaining situation. | | |
| Pub 495 50 | Internship (2-5) 8-week, Arranged | Benner Arr |
| Pub 497 50 | Independent Study (1-5) Arranged | Mills, E. Arr |
| Pub 498 50 | Independent Study (1-5) Arranged | Mills, E. Arr |
| Pub 512 01 | The Implementation Process (3) 8-week, Monday, 5:30-8:30 p.m. | Staff LA 203 MPA Core |
| How public policies become public programs. Interplay of executive, legislative, judicial and administrative branches. Influence of public bureaucracies upon policy-making. Intergovernmental and interagency relations. Prerequisite: Pub 511. | | |
| Pub 562 01 | Oral Communication for Administrators (3) 8-week, Tuesday, 5:30-8:30 p.m. | Staff LA 305 MPA Core |
| Oral communications within the context of the contemporary organization. Some theory, but emphasis will be on performance. Differentiated assignments according to the needs and professional applications of individual students. | | |
| Pub 585 01 | Management of Change (3) July 24, 31, Aug 7 (Fridays), 5:30-8:30 p.m. July 25, Aug. 1, 8 (Saturdays), 9:00 a.m.-4:00 p.m. | Mills, D. P 353 |
| A course on the future: forecasting methods, trends, scenarios. Discussions of change processes (diffusion, revolution, attitude change) and methods of responding. Also offered under Bus 585 01. | | |
| Pub 586 01 | Thesis Preparation (1) Arranged | Mills, E. Arr |
| Pub 588 01 | Thesis Preparation (1) Arranged | Mills, E. Arr |
| Pub 592 SA01 | Human Services: Changing Delivery Systems (3) 8-week, Wednesday, 5:30-8:30 p.m. | Johnson, P. LA 203 |
| Issues relating to government/private business/the independent sector, including the privatization of human services, and the entry of nonprofits into commercial ventures. Seminar format: guest speakers and class discussion. | | |
| Pub 595 50 | Internship (1-3) Arranged | Benner Arr |
| Pub 597 50 | Independent Study (1-5) Arranged | Mills, E. Arr |
| Pub 598 50 | Independent Study (1-5) Arranged | Mills, E. Arr |

| Course/Section | Description/Credit Session/Time | Instructor Building/Room |
|----------------|---------------------------------|--------------------------|
|----------------|---------------------------------|--------------------------|

Rehabilitation

| | | |
|--|--|------------------------|
| Rhb 210 01 | Field Experience (5) Arranged | Thompson P 500 |
| Actual experience in an agency or institution setting with a rehabilitation framework. Coordinating seminars are an integral part of each Field Experience course. Prerequisites: Rhb 100 and Rhb 201 or permission of instructor. Mandatory Credit/No Credit. | | |
| Rhb 310 01 | Field Experience (5) Arranged | Thompson P 500 |
| Mandatory Credit/No Credit. | | |
| Rhb 410 50 | Field Experience (5-20) Arranged | Thompson P 500 |
| Mandatory Credit/No Credit. | | |
| Rhb 493 SA01 | Ethics in Rehabilitation (3) 7-week, TTh, 4:00-6:00 p.m. | Thompson P 451 |
| Situations, problems, professional judgment and conflict of interest in rehabilitation will be presented to students to facilitate their identification and development of sound ethical service delivery practices. | | |
| Rhb 520 01 | Group Process in Rehabilitation (3) 8-week, Tuesday, 6:00-9:00 p.m. | Afanador P 551 |
| Seminars on rehabilitation process, techniques and selected counseling theories as applied to groups in conjunction with one supervised Practicum experience. | | |
| Rhb 525 01 | Loss and Grief (3) First, MW, 5:00-8:00 p.m. | Haney P 454 |
| Loss and grieving process as they relate to illness, injury, disability, and dying. | | |
| Rhb 530 01 | Practicum in Rehabilitation (3) Arranged | Haney P 500 |
| Counseling experience. Applying the principles of rehabilitation; student works part-time in a rehabilitation agency. One hour of individual supervision per two hours of practical experience. | | |
| Rhb 531 01 | Practicum in Rehabilitation (3) Arranged | Haney P 500 |
| Rhb 532 01 | Practicum in Rehabilitation (3) Arranged | Haney P 500 |
| Rhb 580 50 | Internship in Rehabilitation (1-6) Arranged | Thompson Arr Arr |
| Full-time placement in a rehabilitation setting, integrating and applying knowledge from classroom; further development of counseling skills emphasized. Student will be supervised by faculty and agency. | | |

Sociology

| | | |
|---|--|------------------|
| Sc 101 01 | Fundamentals of Sociology (5) 8-week, TTh, 5:30-7:30 p.m. | Sperry LA 220 |
| Focus on culture, social action and structures. Socialization of individual. Studies both social order and social change. | | |
| CS 491 SA01 | The Crisis of Suicide (5) First, Daily, 8:20-10:20 a.m. | Tolson Ba 502 |
| This course will explore the concept of emotional crisis and identify processes for intervention. Techniques of assistance through a study of case histories. | | |

CLASSES

| Course/Section | Description/Credit Session/Time | Instructor Building/Room | Course/Section | Description/Credit Session/Time | Instructor Building/Room |
|----------------|---------------------------------|--------------------------|----------------|---------------------------------|--------------------------|
|----------------|---------------------------------|--------------------------|----------------|---------------------------------|--------------------------|

| | | |
|-------------|---|-----------------|
| CS 492 SA01 | Social Work in Minority Ethnic Communities (5) 7-week, Daily, 10:30-11:40 a.m. | Tolson P 352 |
|-------------|---|-----------------|

A practice-oriented course designed to explore the implementation of service programs in varied cultural settings, viewing cultural values as tools for helping rather than as obstacles to understanding. Examination of ethnological basis for designing helping interventions. Major term project in ethnic community required.

Speech

| | | |
|------------|---|----------------|
| Sph 200 01 | Interpersonal Communication (5) Second, Daily, 12:00-1:30 p.m. | Dore Bu 119 |
|------------|---|----------------|

Through theory and practice this course will raise the student's consciousness of, and skill in, observing and engaging in verbal and non-verbal communication.

| | | |
|--------------|--|--------------------|
| Sph 391 SA01 | Autobiographies: Narrative Modes of Self-Presentation (5) 8-week, TTh, 5:30-8:00 p.m. | Sullivan LA 207 |
|--------------|--|--------------------|

We examine autobiographies as literary and personal statements. Class discussions will center on three modes of self-presentation: historical self-expression, philosophical self-analysis, and poetic self-expression. Also offered under En 391 SB01.

SUMORE

See Institute for Theological Studies

Theology and Religious Studies

Undergraduate Courses

| | | |
|-----------|---|----------------------------------|
| RS 200 01 | Judaeo-Christian Origins (5) 7-week, Daily, 7:50-9:00 a.m. | Shaver LA 207 Core Level I |
|-----------|---|----------------------------------|

Historical background and development of Israelite and Jewish religious experience and tradition; its contribution to the foundations of belief in Christ.

| | | |
|-----------|---|---------------------------------|
| RS 211 01 | The Gospel of Jesus Christ (5) Second, Daily, 5:30-7:35 p.m. | Barta LA 204 Core Level I |
|-----------|---|---------------------------------|

Examination of some New Testament writings in their religious and cultural context in an effort to discover the Christian community's experience of the message and person of Jesus.

| | | |
|-----------|--|----------------------------------|
| RS 263 01 | Religious Experience: East and West (5) 7-week, Daily, 11:50 a.m.-1:00 p.m. | Shaver LA 206 Core Level I |
|-----------|--|----------------------------------|

The phenomenon of religious experience and mysticism as it has been described in spiritual classics of Eastern and Western religions; nature and meaning of these phenomena.

| | | |
|-------------|---|---------------------------------|
| RS 293 SA01 | Religious Experience in Autobiography and Story (5) 7-week, MTTh, 5:30-7:30 p.m. | Leigh LA 206 Core Level I |
|-------------|---|---------------------------------|

A study of religious experience as expressed in stories and autobiographies by major religious thinkers such as Augustine, Merton, C.S. Lewis, G.K. Chesterton, Flannery O'Connor, and Dorothy Day. Also offered under En 391 SC01.

| | | |
|-----------|---|-----------------|
| RS 310 01 | Christ for Our Times (5) 7-week, Daily, 10:30-11:40 a.m. | Early LA 207 |
|-----------|---|-----------------|

Historical context of questions about who Jesus Christ is; exploration of past and present foundations and content of Christian affirmation of Jesus as the Christ; later developments. Prerequisite: Level I.

| | | |
|-----------|---|-------------------|
| RS 338 01 | Christian Views of Love, Sex, and Marriage (5) 7-week, Daily, 11:50 a.m.-1:00 p.m. | Sauvain LA 207 |
|-----------|---|-------------------|

The meaning of love experiences in human sexuality in light of God's relation with each person; examination of spiritual dimensions of sexuality and marriage; sacramental dimension; present procedures and regulations. Prerequisite: Level I.

| | | |
|-------------|--|---------------------|
| RS 393 SA01 | Women in Western Religions (5) 7-week, Daily, 9:10-10:20 a.m. | Quitslund LA 207 |
|-------------|--|---------------------|

Women who have influenced Western religious traditions—when, how, and why; beginning analysis of how their contributions have changed our perception of what it is to be human. Prerequisite: Level I.



SEATTLE UNIVERSITY, SEATTLE, WASHINGTON 98122

Application for ADMISSION: regular grad ☐ regular undergrad ☐ \$15 fee

Application for READMISSION: ☐ no fee

| | | | | |
|------------------------|--------|-----------------|--------|--------|
| FULL LEGAL NAME—LAST | | FIRST | MIDDLE | MAIDEN |
| LOCAL STREET ADDRESS | | LOCAL PHONE NO. | | |
| CITY | COUNTY | STATE | ZIP | |
| PERMANENT HOME ADDRESS | | AREA PHONE NO. | | |
| CITY | COUNTY | STATE | ZIP | |

| | |
|---------------------------------------|------|
| WHEN DO YOU WISH TO ENROLL? | YEAR |
| <input type="checkbox"/> FALL (SEPT) | |
| <input type="checkbox"/> WINTER (JAN) | |
| <input type="checkbox"/> SPRING (MAR) | |
| <input type="checkbox"/> SUMMER (JUN) | |

| |
|-------------------------|
| SOCIAL SECURITY NUMBER: |
|-------------------------|

| |
|--------------------------------|
| LAST ENROLLED AT SU? QTR/YR |
|--------------------------------|

| |
|---------------------------|
| MAJOR WHEN LAST ENROLLED? |
|---------------------------|

| |
|---|
| HAVE YOU USED ANY OTHER NAME(S)? IF YES, LIST THEM. |
|---|

ADMISSION INFORMATION

| | | |
|---|--|---------------------|
| IN WHICH SCHOOL DO YOU WISH TO ENROLL? <input type="checkbox"/> ARTS & SCIENCES <input type="checkbox"/> BUSINESS <input type="checkbox"/> EDUCATION <input type="checkbox"/> INSTITUTE OF PUBLIC SERVICE | <input type="checkbox"/> MATTEO RICCI COLLEGE <input type="checkbox"/> NURSING <input type="checkbox"/> SCIENCE & ENGINEERING <input type="checkbox"/> GRADUATE | WHAT MAJOR DESIRED? |
|---|--|---------------------|

| |
|---|
| YOUR EDUCATIONAL OBJECTIVES AT SU? |
| <input type="checkbox"/> FIRST BACHELOR DEGREE <input type="checkbox"/> ADDITIONAL BACHELOR DEGREE <input type="checkbox"/> MASTER DEGREE <input type="checkbox"/> DOCTORATE <input type="checkbox"/> EDUC PROVISIONAL CERTIFICATE <input type="checkbox"/> EDUC STANDARD CERTIFICATE <input type="checkbox"/> SCHOOL COUNSELING CERTIFICATE <input type="checkbox"/> SCHOOL ADMIN. CERTIFICATE <input type="checkbox"/> EDUCATIONAL SPECIALIST CERTIFICATE <input type="checkbox"/> OTHER CERTIFICATE |

RESIDENCE INFORMATION

| | | |
|--|-------------------------------------|------------|
| WASHINGTON RESIDENT? <input type="checkbox"/> Yes <input type="checkbox"/> No | MO. DAY YR. BIRTHDATE | BIRTHPLACE |
| CITIZEN OF US <input type="checkbox"/> Yes <input type="checkbox"/> No | CITIZENSHIP, IF NOT US TYPE OF VISA | |

| |
|--|
| CULTURAL OR PROFESSIONAL ENRICHMENT COURSES |
| <input type="checkbox"/> UNDERGRADUATE <input type="checkbox"/> GRADUATE <input type="checkbox"/> OTHER DESCRIBE |

BIOGRAPHICAL INFORMATION

| | | | | | |
|---|---|---|---|---|--|
| SEX <input type="checkbox"/> FEMALE <input type="checkbox"/> MALE | MARITAL STATUS <input type="checkbox"/> SINGLE <input type="checkbox"/> MARRIED | ETHNIC ORIGIN (OPTIONAL) <input type="checkbox"/> AMERICAN INDIAN <input type="checkbox"/> ASIAN AMERICAN | <input type="checkbox"/> BLACK AFRO AMERICAN <input type="checkbox"/> HISPANIC AMERICAN <input type="checkbox"/> WHITE AMERICAN | <input type="checkbox"/> FOREIGN NATIONAL <input type="checkbox"/> OTHER | RELIGION (OPTIONAL) <input type="checkbox"/> CATHOLIC <input type="checkbox"/> OTHER |
|---|---|---|---|---|--|

IF YOU WERE ENROLLED AT S.U. WITHIN THE LAST YEAR: IF YOU WISH THE SAME MAJOR AND PROGRAM, AND IF YOU HAVE TAKEN NO INTERVENING COURSES AT OTHER UNIVERSITIES, CHECK BOX AT FAR RIGHT AND SKIP TO SIGNATURE. ☐ NO INTERVENING COURSE WORK

NOTE: IF THIS IS YOUR FIRST APPLICATION FOR GRADUATE DEGREE PROGRAM, DO NOT SKIP.

| | |
|---|---|
| ARE YOU NOW ENROLLED ELSEWHERE? <input type="checkbox"/> Yes <input type="checkbox"/> No | WHAT ARE YOU STUDYING AND WHEN WILL YOU FINISH? |
|---|---|

| LIST COLLEGIATE INSTITUTIONS, INCLUDING SEATTLE UNIVERSITY, IN ORDER OF ATTENDANCE | | | | | | |
|--|------|-------|------------------------|--------|---------------|-------|
| INSTITUTION | CITY | STATE | DATES ATTENDED FROM TO | DEGREE | DATE RECEIVED | MAJOR |
| 1) | | | | | | |
| 2) | | | | | | |
| 3) | | | | | | |
| 4) | | | | | | |
| 5) | | | | | | |

| | | |
|-----------------------------------|----------------|---------------------------|
| CURRENT EMPLOYER—NAME OF FIRM | JOB TITLE | BUSINESS PHONE |
| CURRENT EMPLOYER—BUSINESS ADDRESS | CITY STATE ZIP | DATE EMPLOYED |
| PREVIOUS EMPLOYERS | CITY AND STATE | DATES FROM—MO/YR TO MO/YR |
| | | |
| | | |

I CERTIFY THAT THE FOREGOING INFORMATION CONTAINED IN THIS APPLICATION IS TRUE AND CORRECT. I UNDERSTAND THAT MISREPRESENTATION OR OMMISSION OF INFORMATION SUCH AS FAILURE TO LIST ALL SCHOOLS, COLLEGES, OR UNIVERSITIES ATTENDED MAY RESULT IN THE DENIAL OF THIS APPLICATION OR MY SUBSEQUENT DISMISSAL FROM THE UNIVERSITY AND LOSS OF CREDIT.

DATE _____ 19____

MR ☐ MS ☐ MISS ☐ MRS ☐ SR ☐ BRO ☐ REV ☐ DR ☐

FULL LEGAL SIGNATURE _____



Director, Summer Session
Seattle University
Seattle, WA 98122