

1986

1986 Bulletin of Information - Summer School

Seattle University

Follow this and additional works at: <http://scholarworks.seattleu.edu/bulletinofinformation>

Recommended Citation

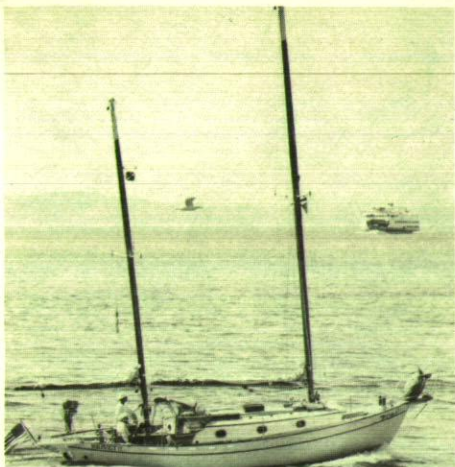
Seattle University, "1986 Bulletin of Information - Summer School" (1986). *Bulletin of Information*. 127.
<http://scholarworks.seattleu.edu/bulletinofinformation/127>

This Bulletin is brought to you for free and open access by ScholarWorks @ SeattleU. It has been accepted for inclusion in Bulletin of Information by an authorized administrator of ScholarWorks @ SeattleU.

BULLETIN OF INFORMATION

Seattle
University
SUMMER SESSION
JUNE 16 to AUGUST 8, 1986





SUMMER 1986

Director of Summer School
Joseph B. Monda, Ph.D.
Seattle University
Seattle, Washington 98122

Where to Call for Detailed Information

Admissions Office	626-5720
Alumni Office	626-5656
Arts and Sciences, College of	626-5986
Bellarmine Hall	626-6858
Business, Albers School of	626-5456
Campion Tower	626-5638
Campus Ministry	626-5900
Continuing Education	626-6626
Controller's Office	626-5747
Counseling Center	626-5846
Education, School of	626-5416
Financial Aid Office	626-5462
General Studies	626-5387
Graduate School	626-6320
Housing (Resident Student Services)	626-5920
Institute for Theological Studies	626-5318
International Student Adviser	626-5388
Library	626-6859
Matteo Ricci College II	626-5379
Minority Affairs Office	626-6226
Nursing, Office of	626-6380
Registrar's Office	626-5700
Science and Engineering, School of	626-6250
Students, Dean for	626-6782
Summer School Director	626-5361
SUMORE — see Institute for Theological Studies.....	626-5318

For Information

ADMISSIONS
(206) 626-5720

REGISTRAR
(206) 626-5700

SCHOOL OF EDUCATION
(206) 626-5416

Volume 17, No. 4
Summer 1986

Seattle University
Bulletin of Information USPS 487-740
Published Quarterly by Seattle University
Seattle, Washington 98122
Second class postage paid at Seattle, Washington

POSTMASTER: Send address changes to Summer School Director,
Seattle University, Seattle, WA 98122

An Equal Opportunity Employer

Editor/Jean Merlino

Information concerning graduate and undergraduate programs may be
obtained in supplementary bulletins.



ACADEMIC CALENDAR

Advance Registration	April 21-25
Evening hours to 7:00 p.m.	April 21, 22
Advance Registration Closed	April 26-June 12
Registration Days	
Full Sessions and First Term	June 13 and 16
Evening hours to 7:00 p.m.	June 16
Second Term	July 14, 15
Other Short Term Courses and Workshops.....	First two days of class
Classes Begin	June 16
Last day to drop with 100% refund	First day of class
Late Registration	
Full Sessions and First Term	June 17-20
Add/Drop/Change	June 13-20
Independence Day—No Classes	July 4
Last Day to Withdraw, First Term	July 7
Close of First Term	July 11
Registration, Second Term	July 14, 15
Last Day to Withdraw, Second Term and Full Sessions	July 25
Final Examinations	
First Term	July 11
Seven-Week Full Session	July 31, August 1
Eight-Week Full Session and Second Term	August 7, 8

Summer 1986

7-Week Session	June 16-August 1
8-Week Session	June 16-August 8
First 4-Week Term	June 16-July 11
Second 4-Week Term	July 14-August 8

See Education schedule (pages 18-23) for adjusted dates to accommodate teachers with extended school year.

Seattle University

Seattle University is an independent, coeducational institution, operated under the auspices of the Jesuit Order, with a faculty and staff which includes Jesuits as well as lay people of various faiths.

The University is composed of eight major academic units with 44 undergraduate and 12 graduate programs of study: the College of Arts and Sciences, Albers School of Business, School of Education, School of Science and Engineering, School of Nursing, Matteo Ricci College II, Graduate School, and the Institute of Public Service.

Seattle University is accredited by the Northwest Association of Schools and Colleges, National League for Nursing, American Chemical Society, Council on Rehabilitation Education, Committee on Allied Health Education and Accreditation, Accreditation Board for Engineering and Technology, National Council for Accreditation of Teacher Education, and the American Assembly of Collegiate Schools of Business. It is also a member of the Independent Colleges of Washington.

The University's teacher training programs are approved by the State of Washington and qualify its students for teaching certificates and principals' credentials issued by the State Department of Public Instruction. The School of Education, approved by the Washington State Board of Education, offers programs leading to the Bachelor of Arts in Education and the Bachelor of Education degrees and graduate and fifth-year programs.

The Graduate School includes Master's programs in business administration, education, psychology, public administration, rehabilitation, religious education and ministry, software engineering, and transportation engineering. It also includes a Doctoral program in Education and the Institute for Theological Studies.

EVENING OFFERINGS

For dates, times, and credits, see complete description of all classes pages 14-30

Alcohol Studies

Alc 401 01 Pharmacology/Physiology of Alcohol Use
Alc 402 01/02 Counseling Principles and Techniques
Alc 403 01 Personal and Social Rehabilitation
Alc 405 01 Law and Alcohol
Alc 411 01 Advanced Counseling
Alc 412 01 Group Dynamics
Alc 418 01 Alcoholism and the Family
Alc 422 01 Alcoholics Anonymous as a Resource for Professionals
Alc 491 SA 01 Spirituality and Recovery
Alc 491 SC 01 Aging and Addiction
Alc 491 SE 01 Adult Children of Alcoholics
Alc 491 SF 01 Intervention Process

Business

Bus 260 01 Business Statistics
Bus 334 01 Intermediate Accounting III
Bus 435 01 Auditing
Bus 482 01 Business Policy and Organization
Bus 501 01 Business Statistics
Bus 502 01 Financial Accounting
Bus 505 01 Legal Environment
Bus 506 01 Economic Analysis
Bus 507 01 Organization Behavior
Bus 508 01 Production and Operations Management
Bus 530 01 Managerial Accounting
Bus 550 01 Domestic and International Marketing
Bus 552 01 Marketing Research
Bus 555 01 Marketing Communications
Bus 560 01 Management Information Systems
Bus 562 01 Advanced Statistical Analysis
Bus 570 01 Managerial Economics
Bus 575 01 International Business Enterprise
Bus 580 01 Organizational Structure and Theory
Bus 585 01 Management of Change
Bus 586 01 Entrepreneurship and Small Business Management
Bus 591 SA 01 Seminar in Negotiating, Mediating, and Advocating
Bus 595 01 Business Policy

Computer Science

CSC 150 01 Introduction to Computer Science
CSC 170 01 Intermediate Programming with PASCAL
CSC 180 01 Intermediate Programming with COBOL

Education

Ed 491 SU 01 Thinking Skills in the Curriculum
Ed 512 01 Counseling and Informational Sources
Ed 527 01 Counseling Tests and Measurements I
Ed 551 01 Counseling Practicum
Ed 560 01 Family Counseling

Engineering, Software

ESW 591SA 01 Special Topics-C/UNIX

English

En 382 01 Major American Novelists
En 492 SA 01 American West in Film and Literature

Foreign Languages

Fl 191 SA 01 Business Spanish

Philosophy

Pl 220 04 Philosophical Problems: The Human Person
Pl 252 01 Business Ethics

Political Science

Pls 100 01 American National Government
Pls 330 01 Soviet Union and East Europe

Psychology

Psy 427 01 Introduction to Counseling

Public Service

Pub 349 01 Collective Bargaining
Pub 511 01 Bureaucratic Organizations
Pub 562 01 Oral Communication for Administrators
Pub 585 01 Management of Change
Pub 592 SA 01 Meta-analysis

Rehabilitation

Rhb 425 01 Loss and Grief
Rhb 493 SA 01 Ethics in Rehabilitation
Rhb 520 01 Group Process in Rehabilitation

Sociology

Sc 491 SB 01 Extremes: A Study of Environments

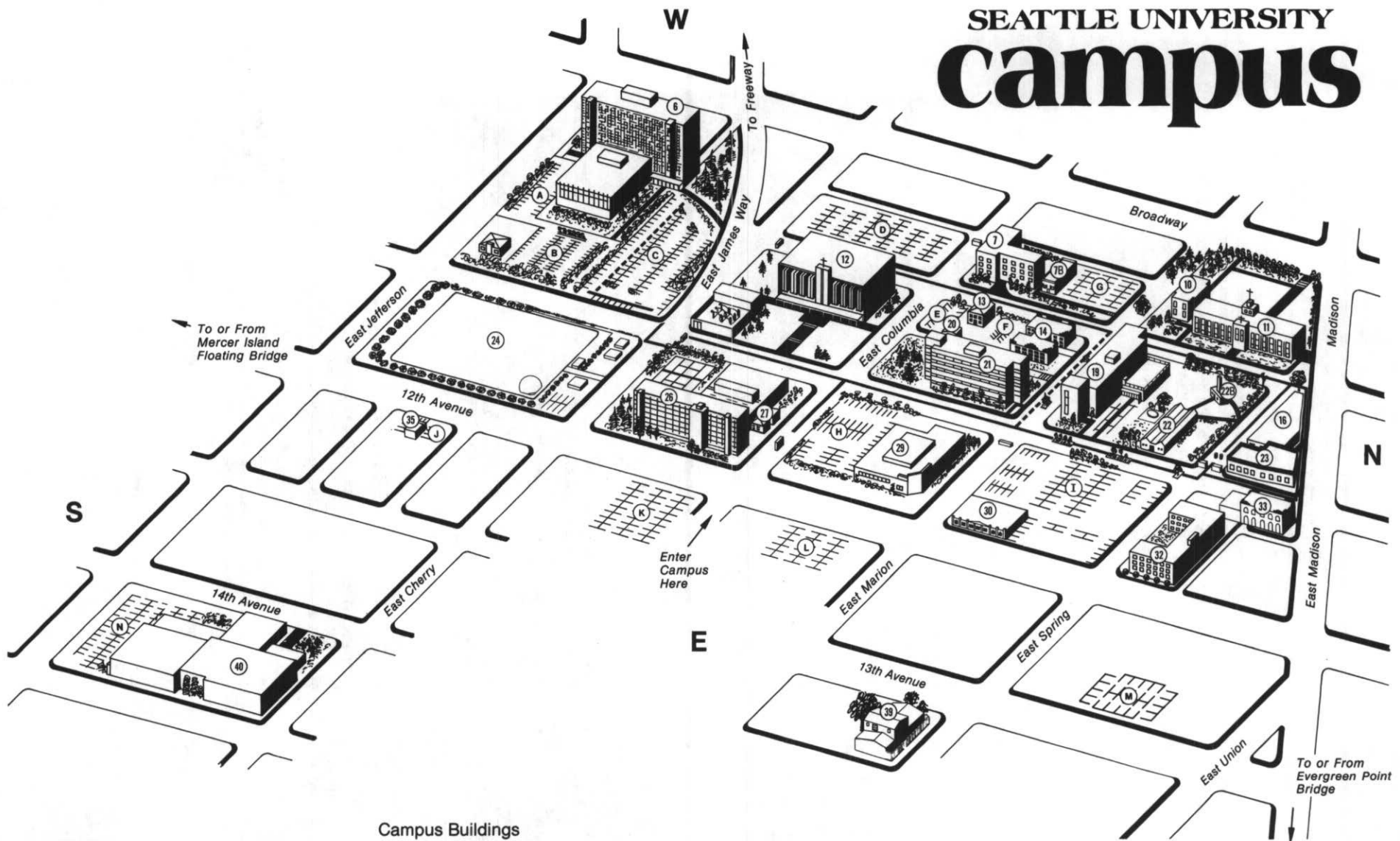
Speech

Sph 200 01 Public Speaking

Theology/Religious Studies

RS 211 01 The Gospel of Jesus Christ

SEATTLE UNIVERSITY campus



Campus Buildings

KEY

NOTE: Building numbers on map correspond to signs in front of buildings.

- Accessible entrance and elevator
- Accessible entrance to one floor
- Not accessible
- Disabled parking
- Accessible path
- Power operated

- ♣ Bannan Building 21
- ♣ Bellarmine Residence Hall 26
- ♣ Book Store Building 29
- ♣ Buhr Hall 22
- ♣ Campion Tower 6
- ♣ Campus Services Building 30
- ♣ Child Care Center 39
- ♣ Connolly Center 40
- ♣ Connolly Center Parking N DP
- ♣ Engineering Building 16
- ♣ Faculty/Staff Parking A, E DP, G DP, I, J, N DP

- ♣ Garrand Building 10
- ✕ International Student Center 20
- ♣ Intramural Field 24
- ♣ Lemieux Library 12
- ♣ Liberal Arts Building 11
- ✕ Loyola Annex 7B
- ♣ Loyola Hall 7
- ♣ Loyola Hall Parking F
- ♣ Lynn Nursing Building 7
- ♣ Marian Hall 14
- ✕ McGoldrick Student Development Center 27
- ♣ Pigott Building 19

- ♣ Pigott Auditorium 19
- ✕ ROTC Headquarters 13
- ♣ Sculpture Lab 22B
- ♣ Student Parking B, C DP, D, K, L, M, N DP
- ♣ Student Union 23
- ♣ Twelfth Ave. Building 35
- ♣ Visitor Parking H DP
- ✕ Xavier Residence Hall 32



OF SPECIAL INTEREST

Attention Teachers

Reasonable effort will be made by the School of Education to accommodate students who, because of the extended school year, will be unable to begin classes on the scheduled dates.

Alcohol Studies Program

During Summer Session the Alcohol Studies Program seeks to accommodate regular Certificate students and also offer special short-term courses designed for out-of-town students who are in Seattle for a limited time.

Note that we are offering two new courses this summer: **Spirituality and Recovery** and **Aging and Addiction**. Both are short courses. The other short courses are repeats of "winners" from past summers.

For our Certificate students we are offering a full complement of eight-week courses that include most of the required courses and five advanced courses, including **The Intervention Process** and **Adult Children of Alcoholics**.



Institute for Theological Studies

The Institute is a newly constituted collaborative venture in graduate theological and pastoral education co-sponsored by Seattle University and the Roman Catholic Archdiocese of Seattle. The Institute offers five advanced ministerial degrees: the Master of Ministry, Master of Religious Education, Master of Pastoral Ministry, Master of Theological Studies and Master of Divinity. Summer students draw upon the rich resource of the Institute's SUMORE Program with its nationally acclaimed faculty.

In addition to the rich summer course offerings which appear in this bulletin, two special workshops will be conducted:

Proffoff Life Context Intensive Journal Workshop, June 21-22 (sponsored by Seattle University Continuing Education Department).

"Christian Living and the American Economy," July 18-19, with Philip Berrigan and Amata Miller, I.H.M.

Additional information on the Institute's summer and year-long programs may be obtained by calling the ITS Office, (206) 626-5318.



New This Summer

Introduction to Northwest Coast Indian Carving

Art 491 SCO1, 2 credits, July 21-August 1

Conducted by Jim Schoppert, Tlingit Artist. Learn about Northwest Coast art, make your own carving tools, and produce a carving in this intensive workshop. Jim Schoppert is well known in Washington and Alaska for his carving, has executed a number of sculptures under Alaska and Washington Art Programs, and conducts workshops regularly in Alaska. A board member of the Institute for Alaska Native Arts, Mr. Schoppert was recently appointed to the Washington State Art Commission.

Literary Source and Stream: The Influence of the Bible and the Classics

En 391 SA 01, 5 credits, June 16-August 1

Comparison of Biblical and classical stories, motifs, and genres, tracing these in the Western tradition through ancient and modern writings.





NEW THIS SUMMER

American West in Film and Literature

En 492 SA 01, 5 credits, June 16-August 8

Examines classic films and literature which illuminate the mythic patterns of the American West.

Contemporary Russia

Fl 391 SA 01, 3 credits

Evening Lectures in the Spring and Tour of Russia in the Summer

This course involves a series of evening lectures offered during the Spring Quarter followed by a summer tour of Russia, directed by Mr. Richard Carter. For information, contact the Department of Foreign Languages before the start of Spring Quarter (March 24). Also offered under Ed 391 SA 01.

Biography as History

Hs 391 SA 01, 5 credits, June 16-August 1

Introduction to the problems of biography as a form; currents in the history of biography and the problems of the relationship of history and biography.

History of Science

Hs 392 SA 01, 5 credits, June 16-August 1

Introduction to the history of modern science, with emphasis on selected episodes from the history of 19th and 20th century biology, psychology, and physics. Background in biological or physical sciences desirable, but not required.

Philosophy in Science Fiction

Pl 491 SA 01, 5 credits, June 16-August 1

Study of philosophical problems that are raised by contemporary science fiction writers.

Women in the Third World

Pls 291 SA 01, 5 credits, June 16-August 1

Explores the impact of economic underdevelopment and international aid efforts on family structures in Africa, Asia, and Latin America.

On Church and State: History, Theory, Practice

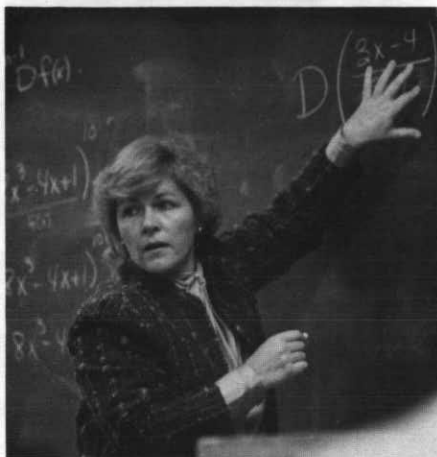
RS 393 SA 01, 5 credits, June 16-August 1

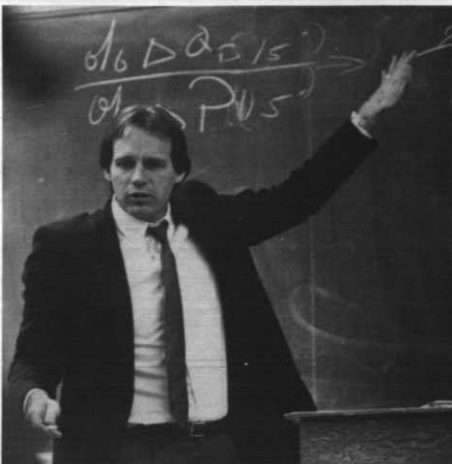
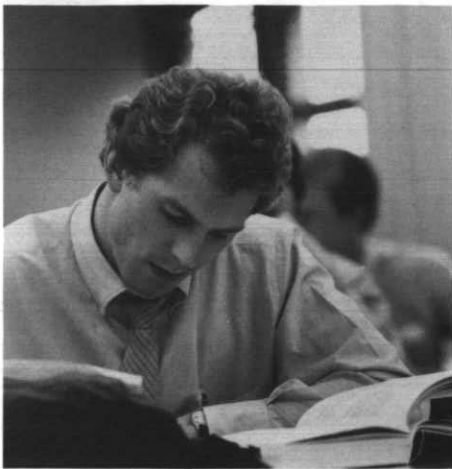
The history of Church-State relationships, their genesis and development.

Extremes: A Study of Environments

Sc 491 SB 01, 5 credits, June 16-August 8

A study of environments in extreme situations. Concentration camp, prison, abusive families, submarines, space flight, police stress and war are some of the settings to be studied.





CONTINUING EDUCATION

Non-Credit Programs for all ages

For further information on the programs listed below, write to:

Continuing Education Department
Seattle University
Seattle, WA 98122
or call (206) 626-6626

Musical Theatre Workshop—for students age 12 and over

Two 2-week workshops

August 4-16, Daily, 10:30 a.m.-12:00 p.m.

Beginning musical theatre techniques—vocal, dance, movement

August 18-29, Daily, 10:30 a.m.-12:00 p.m.

Advanced musical theatre techniques—vocal, dance, movement. This session will culminate in a musical review to be presented at the end of the two weeks.

Instructors: Robert Cooper and Ralph McCoy

Tuition: \$40/session \$60/both sessions

Summer Challenge I—for High School Students

Three-week Program—July 6-25

Learning strategies and writing will be the focus of classes for these high school students who will live on campus for three weeks in a supervised group. Goals of this specially designed program are 1) to improve the ability to learn, think, and write; 2) enhance the commitment to learning; 3) understand one's learning style; and 4) experience and improve the opportunities for success in an academic environment. Small classes, intensive instruction, and supervised field trips in the city and surrounding areas comprise the core of the program. Cost is \$825.

Elderaudit—for persons 60 or over

Elders may audit classes for \$40.00 per class on a space-available basis with permission of instructor. For further details contact the Continuing Education Department.

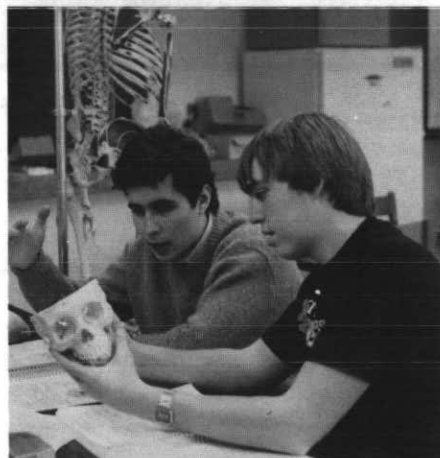
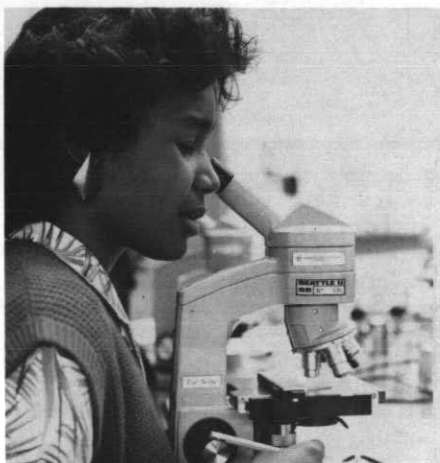
Elderhostel—for persons 60 or over

Seattle University is a participant in this major educational movement. Seven one-week, low-cost residential academic programs will be offered beginning June 15. REGISTRATION THROUGH THE BOSTON OFFICE ONLY. Write to: ELDERHOSTEL, 80 Boylston St., Suite 400, Boston, MA 02116.

A limited number of spaces are reserved for commuters each week. Contact Continuing Education Department for further information.

Seattle University Alumni Audit

Undergraduate classes are open for non-academic audit to Seattle University alumni at \$40.00 per class. The following restrictions apply: 1) the student may not be currently enrolled as a regular student at Seattle University; 2) no credit will be given nor academic record maintained; 3) the classes offered for alumni audit are open on a space-available basis. The requirements for work and class participation are at the discretion of each instructor. Fees and applications for summer alumni audit must be received at the Office of Alumni Relations no later than June 20, the fifth day of class. No refunds will be made after that date. For further information write to Office of Alumni Relations, Seattle University, Seattle, WA 98122, or call (206) 626-5656.



ACADEMIC INFORMATION

Admission — Those who wish to be regular students and obtain regular academic credit during the Summer Quarter must make formal application to the University. Application forms may be obtained from the Admissions Office or you may use the form at the back of this Bulletin. Applications and transcripts must be on file by June 12.

Readmission — Former students not enrolled at the University for the Spring Quarter must apply for readmission if they wish to attend the Summer Quarter. Graduates who have not attended since receiving their degrees will be readmitted as fifth year students unless pursuing a Master's or Doctoral degree, in which case the student must file for admission to Graduate School. Applications and supporting documents should be on file by June 12.

Registration — Two registration options are offered: advance registration April 21-25, or registration immediately preceding the session/term. (See registration dates on page 3.) These registration options are open to students continuing from Spring term and to new and readmitted students. New and readmitted students, however, may not register until they have filed for admission and obtained mail confirmation of approval to register.

Auditor — Admission as an auditor must be requested through the Admissions Office and be approved by the dean of the school and the instructor of the course. An auditor will not be required to participate in class discussion or laboratory work. Assignments are at the discretion of the instructor.

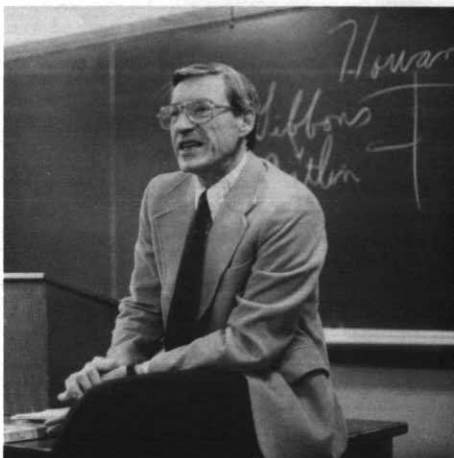
Graduate Courses — Restrictions: Enrollment in graduate courses (500-699) is restricted to those holding status of "graduate student": (Level = G1 or G3) which indicates full admission to the Graduate School to pursue a Master's or Doctoral Program. Students holding 5th year status (Level = 5Y) are not eligible to enroll in courses numbered 500-699 without permission of the Dean of the Graduate School.

Summer Graduate Course Load — For Graduate students attending the entire eight-week session, a maximum load will ordinarily be 12 credits. In special circumstances, and with the permission of the chair, a student may register for a total of 15 credits over this period. This is especially appropriate if the additional three credits are research or independent study which will not be completed in the summer time frame. In the case of SUMORE students, the limit will be 16 credits since this group begins course preparation and readings well in advance of summer session.

For graduate students attending a four-week session, a maximum load will ordinarily be six credits. In special circumstances and with permission of the chair, a student may register for a total of nine credits over this period.

Undergraduate Credit — A full quarter's credit (15 hours) may be earned during the summer.

Records — The policy of Seattle University on the right of students' access to their educational records and on confidentiality of information conforms to current public law. The full statement of policy is available for inspection in the Office of the Vice President for Academic Affairs or the Registrar.



REGISTRATION

Advance Registration — April 21-25

Continuing students do not require clearance for advance registration; the procedure is simply to prepare a program of study approved by an adviser during the April 21-25 period, and to present the signed form at the Registrar's Office during regular office hours. A fee statement will be mailed after the close of advance registration.

New and readmitted students who obtain mail notification approval to register before April 18 will follow the same procedures as continuing students.

- a) Consult with department adviser and prepare a program of study on the schedule form. Advisers will be available during registration hours.
- b) Present the approved schedule form at the Registrar's Office during regular hours, 8:30 a.m. to 4:00 p.m., through April 25 and until 7:00 p.m. the evenings of April 21 and 22. You will be registered at the Registrar's Office.
- c) Pay tuition and fees to the Controller during regular office hours, or by mail through June 16.

Registration

Continuing, new, and readmitted students who do not advance register may register on June 13 and June 16 by presenting an adviser-approved schedule form to the Registrar during regular office hours, or from 4:00 to 7:00 p.m. on June 16. Those who do not register by 4:00 p.m. on Friday, June 13, may register the first day of class (June 16). New and readmitted students register between 8:30 a.m.-12:00 noon; continuing students will register between 2:00-7:00 p.m.

Course Changes — Additions and drops for full and first term courses are permitted June 13 to June 20. No program changes may occur after June 20. Drops and additions for short term classes are permitted only for the first two class days of these classes.

Withdrawal — The Registrar's Office must be officially notified when a student withdraws from one or more of his/her courses. See the calendar for withdrawal closing dates for full and short term courses. After closing dates no withdrawals are permitted, and a grade of E or NC will be assigned.

Grades — will be mailed to all students within two weeks of the end of Summer Quarter.

Library Hours

Summer library hours for the A.A. Lemieux Library will be from 8:00 a.m. to 11:00 p.m. Monday through Thursday; Friday from 8:00 a.m. to 5:00 p.m.; Saturday from 9:00 a.m. to 5:00 p.m.; and Sunday from 1:00 p.m. to 11:00 p.m. The reading room on the first floor will be open every day from 7:00 a.m. to midnight. Holiday hours will be posted during the quarter. The library reserves the right to adjust the posted times as necessary.

Book Store

The Book Store is your source for all required textbooks and course-related supplies. In addition, it offers a complete selection of general paperback books and reference books. The store features a wide selection of sweatshirts, T-shirts, and gift items with Seattle University imprinting. Other selections include greeting cards, snack foods, and sundries. You may special order any book not in stock, leave your film for processing, and sell your used books at the end of the quarter. If you have any questions, call (206) 626-5925.



FINANCIAL INFORMATION

Tuition and Fees

POLICY — Tuition Payment

Students registering for classes during the advance registration period from April 21 through April 25 may either pick up their statements in person or may receive them in the mail after April 25. Students registering (or add/drop) after April 25 are expected to pick up their statement the same day at the Controller's Office.

Payment of tuition and fees includes library and health service fees, student activities, and building fund. After a student registers for a course, the University has committed a space in each course for each student. It is the student's responsibility to pay for all fees in full whether the student attends the course(s) or not. Tuition and fee payment for either the Full or First session are due on or before June 16, 1986 — the day classes begin for Summer School. Tuition and fee payments for short courses are due on the first day of the short course. Payments made after that time are subject to the late registration/late payment policies.

Failure to pay in full all tuition and fees of any quarter or session may result in a hold on the student's transcript and may prevent registration in subsequent quarters.

To avoid lines for payment, students are encouraged to pay tuition and fees by mail. Checks should be made payable to Seattle University and mailed to: Seattle University, P.O. Box 84107, Seattle, WA 98124-5407, or delivered in person to the Controller's Office. Date of payment is determined by the date postmarked or by payment in person.

POLICY — Late Registration/Late Payment

Late registration fees of \$10 per day to a maximum of \$80 are charged if tuition and fees are not paid in full according to the session you are attending (see Policy—Tuition Payment for more detail). Late registration/late payment fees shall apply to all checks not honored by banks and returned to Seattle University.

Although Seattle University reserves the right to change its charges at any time without prior notice, after the beginning of a quarter no change will be made effective for that quarter.

Undergraduate courses

— per credit hour \$125.00

Undergraduate Education Courses

— per credit hour 105.00

Masters Programs — per credit hour

Business 174.00
Education 105.00
ITS (CORPUS) 125.00
ITSS (SUMORE) 105.00
Psychology 148.00
Public Administration ... 148.00
Rehabilitation 148.00
Software Engineering.... 174.00
Transportation
Engineering 162.00

Educational Specialist Programs —

per credit hour 105.00

Doctoral Program — per credit hour

Doctor of Education
in Educational
Leadership 174.00

Certificate Programs —

per credit hour

Alcohol/Drug Studies 105.00
Applied Sociology 125.00
Health Information 125.00
Rehabilitation 125.00

Audit (undergraduate courses only)

per credit hour 43.00

Occasional Fees (non-refundable)

Application, undergraduate and
graduate 15.00
Application, transient students
..... 15.00
Late Registration (maximum
\$80) per day, 10.00
Matriculation, undergraduate
and graduate 45.00
Credit by Examination
(per credit hour) 40.00



FINANCIAL INFORMATION

Validation of field experience (per credit hour)	40.00
Removal of Incomplete (per course)	15.00
Graduation, undergraduate (per degree)	45.00
Graduation, graduate (per degree)	65.00

Graduation fees are due at the time of application for graduation.

and graduation forms will be released only upon presentation of a receipt.

Certificate fee	30.00
Vocal or instrumental lessons (per credit hour)	136.00
For laboratory fees and other occasional fees, consult the 1985-86 Seattle University Bulletin of Information, page 16.	

Refunds

Refunds are based on the number of class days, defined as consecutive Mondays through Fridays, beginning the first day of class for each session. The refund policy applies to complete withdrawals or reduction in class load. The official date of withdrawal from a course is considered to be the date a student submits the withdrawal or change form to the Registrar. A refund to a financial aid recipient is applied first to the student's financial aid source(s) and the balance, if any, is remitted to the student. Financial Aid recipients will, therefore, in all likelihood, not receive refunds.

If the tuition and/or fees have not yet been paid, the portion normally not refunded is due and payable together with the late fee. Failure to pay the non-refundable tuition and fees may result in transcript holds and may prevent registration in subsequent quarters.

Withdrawal (full or partial)

Full 7-week or 8-week Session:

Through first 7 class days	80%
8th through 12th class day	60%
13th through 15th class day	40%
Thereafter	No refund

Half Session:

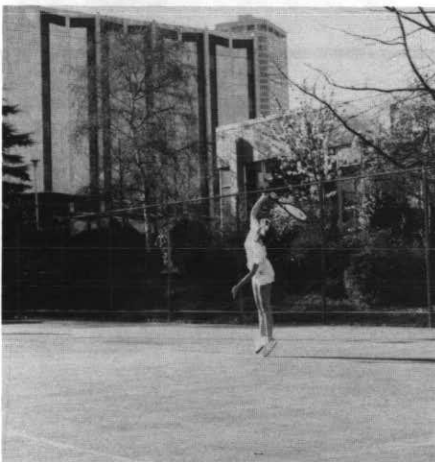
Through first 5 class days	70%
6th through 10th class day	35%
Thereafter	No refund
Shorter Sessions	No refund

Financial Aid

During Summer Quarter, loans and Work-Study employment are available. Students desiring long-term loans must apply for a Guaranteed Student Loan approximately eight weeks prior to registration to insure the availability of funds when tuition is due on registration day.

Students who have established Work-Study eligibilities for the preceding academic year may continue to utilize that eligibility through June 30, 1986. Students who have Work-Study eligibility for the 1986-87 academic year are eligible for Work-Study jobs during the summer.

Grants are not offered for the summer session. The Career Planning and Placement Office maintains a listing of both on and off-campus jobs. For specific information, contact the Financial Aid Office, Seattle University, Seattle, WA 98122. Phone: (206) 626-5462.



Housing

Room and Board:

First Term: June 16-July 11	\$448.00
Second Term: July 14-August 8	\$448.00
Full 7 Week Session: June 16-August 1	\$784.00
Full 8 Week Session: June 16-August 8	\$896.00

There are no on-campus living accommodations for families. Residence halls will be open June 15 at 9:00 a.m. and will close on August 8. All meals will be served in the Bellarmine Marketplace. Regular food service meals will begin with breakfast on June 16 and end with dinner on August 8. There are no arrangements for room without board. Blankets, pillows, and linen must be provided by each student.

1. Above fees apply to one room, double occupancy. Private rooms are available on a first-come, first-serve basis for an additional \$84.00 per term; \$147.00 for 7-week session, and \$168.00 for the 8-week session. Requests for private rooms will be taken, but not guaranteed, until June.
2. There will be four meal plans offered; the above room and board rates are based on a double room and Plan A. When you apply for summer housing, we will send you complete descriptions and prices for all meal plans.
3. All students check out of the residence halls 24 hours after their final exam.

RESERVATIONS — Admission to the University does not automatically guarantee room reservations. Requests for student housing are made through the Director for Resident Student Services. No deposit is required.

Parking

All parking on campus is authorized by the display of a valid Seattle University parking permit. Parking permits may be purchased at the Controller's Office in the Bookstore Building. The permits are then issued in the Safety and Security Services office which is located on the south side of the Bookstore Building. Disabled parking spaces are available in most parking areas. A Seattle University disabled parking permit must be displayed when parking in these designated areas. All parking areas are signed and clearly state which areas are restricted, reserved, or otherwise regulated. Campus maps, parking information and other Security related information is available at Safety and Security Services. For further information call Safety and Security Services at 626-5356.

Equal Opportunity — Seattle University offers the opportunities and experiences of higher education to all students equally without regard to race, religion, age, sex, or national origin. It does so in keeping with the guidelines and requirements of laws and regulations as promulgated by state and federal agencies.

CLASSES

Course/Section	Description/Credit Session/Time	Instructor Building/Room
----------------	---------------------------------	--------------------------

Schedule

Seattle University reserves the right to cancel any class without prior notice.

Seven-week classes are scheduled for 70-minute blocks and extend from June 16-August 1.

Eight-week classes are scheduled for 60-minute blocks and extend from June 16-August 8.

The first 4-week term will extend from June 16-July 11.

The second 4-week term will extend from July 14-August 8.

See EDUCATION for adjusted time schedule.

Building Code

Ba	Bannan Building	GEL	Gene E. Lynn Building
Bu	Buhr Hall	LA	Liberal Arts Building
Ca	Campion Tower	LL	Lemieux Library
CC	Connolly Center	M	Marian Hall
E	Engineering Building	NOC	Not On Campus
Ga	Garrand Building	P	Pigott Building

Alcohol Studies Short Courses

Alc 400 01	Symposium on Alcoholism (3) June 16-27, Daily, 9:00 a.m.-3:30 p.m.	Schnell/Royce P 401
------------	---	-------------------------------

Special emphasis on back to basics. Alcoholism: extent, nature, causes, diagnosis, prevention and treatment. Addiction. Also offered under Psy 490 and Ed 491 SG 01.

Alc 413 01	Alcoholism Schools Workshop (2) June 30-July 3, Daily, 12:00-5:50 p.m.	Marshall P 401
------------	---	--------------------------

How to teach Alcohol Information (AIS) and DWI Schools. Prerequisite: Alc 400 or permission of Director.

Alc 422 01	Alcoholics Anonymous as a Resource for Professionals (2) July 7-18, Daily, 4:00-5:50 p.m.	Royce/Schnell P 451
------------	--	-------------------------------

History, steps, traditions. Philosophy and psychology of the AA program. Role in recovery. Prerequisite: Alc 400 or permission of Director.

Alc 491 SA 01	Spirituality and Recovery (1) June 23-27, Daily, 4:00-5:50 p.m.	Helgoe P 401
---------------	--	------------------------

Spiritual dimensions of recovery. Cognitive psychology and recovery behavior. Prerequisite: Alc 400.

Alc 491 SB 01	Alcohol and Schools (2) July 7-11, Daily 9:00 a.m.-3:00 p.m.	Deiro P 452
---------------	---	-----------------------

Alcohol and drug problems in adolescents. How educational professionals can prevent and recognize student problems. Also offered under Ed 491 SF 01.

Course/Section	Description/Credit Session/Time	Instructor Building/Room
----------------	---------------------------------	--------------------------

Alc 491 SC 01	Aging and Addiction (1) June 30-July 3, Daily, 4:00-6:30 p.m.	Madsen-Sundquist P 352
---------------	--	----------------------------------

Review of alcoholism and other addictions among the elderly. Understanding the unique problems and examination of potential solutions and resources. Prerequisites: Alc 401 and 402.

Alc 491 SD 01	Anorexia and Alcoholism (2) July 28-August 1, Daily, 9:00 a.m.-3:00 p.m.	Roise P 451
---------------	---	-----------------------

The nature of eating disorders (anorexia nervosa and bulimia) and possible links to alcohol/drug abuse. Prerequisites: Alc 402 and 403.

Eight-Week Courses

Alc 401 01	Pharmacology/Physiology of Alcohol Use (2) 8-week, Wednesday, 7:00-9:30 p.m.	Schnell P 452
------------	---	-------------------------

Absorption, distribution, excretion and metabolism. Behavioral effects and chronic organ damage. Prerequisite: Alc 400 or permission of Director.

Alc 402 01	Counseling Principles and Techniques (4) 8-week, MW, 7:00-9:30 p.m.	Osborne P 456
------------	---	-------------------------

Patient/counselor relationships. Legal and ethical responsibilities. Directive vs. non-directive. Role-playing and videotape playback. Prerequisite: Alc 400.

Alc 402 02	Counseling Principles and Techniques (4) 8-week, TTh, 7:00-9:30 p.m.	Carlisle P 456
------------	--	--------------------------

Patient/counselor relationships. Legal and ethical responsibilities. Directive vs. non-directive. Role-playing and videotape playback. Prerequisite: Alc 400.

Alc 403 01	Personal and Social Rehabilitation (2) 8-week, Tuesday, 7:00-9:30 p.m.	Huey P 452
------------	--	----------------------

Motivation and personality problems in recovering alcoholics. Sobriety, relapses, dry-dunks; family adjustments and recovery. Prerequisite: Alc 400.

Alc 405 01	Law and Alcohol (2) 8-week, Monday, 7:00-9:30 p.m.	Bond P 452
------------	---	----------------------

Legal implications and consequences of alcohol-related offenses. Uniform Act. Deferred prosecution. Courts and jurisdictions. Prerequisite: Alc 400 or permission of Director.

Alc 407 01	Field Experience I-Alcoholism (3) Arranged	Bury Arr
------------	--	--------------------

Supervised work in an approved alcoholism facility. Oral and written reports. Prerequisite: Alc 402.

Alc 408 01	Field Experience II-Drug Abuse (3) Arranged	Bury Arr
------------	---	--------------------

Supervised work in an approved drug abuse facility. Oral and written reports. Prerequisite: Alc 407.

Alc 410 50	Individual Research (1-3) Arranged	Staff Arr
------------	--	---------------------

Open only to students with sufficient academic background to pursue independent study. Permission of Director.

CLASSES

Course/Section	Description/Credit Session/Time	Instructor Building/Room
Alc 411 01	Advanced Counseling (2) 8-week, Thursday, 7:00-9:30 p.m.	Bury P 455
Instruction and supervised practice in techniques of special value in counseling alcoholics. Prerequisite: Alc 402.		
Alc 412 01	Group Dynamics (2) 8-week, Monday, 7:00-9:30 p.m.	Dickman P 455
Dynamics of group interactions. Facilitating. Applications to alcoholism treatment. Prerequisites: Alc 403 and 407.		
Alc 418 01	Alcoholism and the Family (2) 8-week, Monday, 6:00-8:30 p.m.	Riordan P 451
Alcohol-related problems in the family. Individual and group therapy. Prerequisites: Alc 402 and 403.		
Alc 421 50	Advanced Project or Research in Alcoholism/ Drug Abuse (3-5) Arranged	Staff Arr
Replication, original research or scholarly investigation which demonstrates mastery of fact-finding, experimental design and presentation of results. Permission of Director.		
Alc 491 SE 01	Adult Children of Alcoholics (2) 8-week, Tuesday, 7:00-9:00 p.m.	Sale P 451
Personality characteristics of adult children of alcoholics. Risks for alcoholism and other life problems. Therapy techniques. Prerequisites: Alc 403 and 407.		
Alc 491 SF 01	Intervention Process (2) 8-week, Wednesday, 7:00-9:30 p.m.	Gustafson/Sundin P 451
Facilitation of the intervention process. Family focus. Strategies and role-playing. Risks and goals. Prerequisite: Alc 407.		

Allied Health

CYTOTECHNOLOGY

AH 396 01	Cytotechnology Internship (0) Arranged	Buschman NOC
Clinical cytotechnology internship.		

NUCLEAR MEDICINE

AH 453 01	Applied Nuclear Medicine Technology IV (7) Arranged	Mentors NOC
Clinical nuclear medicine internship.		
AH 459 01	Nuclear Medicine Seminar IV (2) Arranged	Mentors NOC
Clinical nuclear medicine internship.		

Course/Section	Description/Credit Session/Time	Instructor Building/Room
ULTRASOUND		
AH 473 01	Clinical Orientation to Ultrasound (10) Arranged	Mentors NOC
Clinical ultrasound internship.		
AH 474 01	Clinical Experience in Ultrasound (8) Arranged	Mentors NOC
Clinical ultrasound internship.		
AH 483 01	Ultrasound Seminar (2) Arranged	Skelly Arr
Clinical ultrasound internship.		
AH 484 01	Basic Science of Ultrasound (2) Arranged	Skelly NOC
Clinical ultrasound internship.		

Biology

Bl 185 01	Biology of Human Sexuality (5) 8-week, Daily, 1:10-2:10 p.m.	Davis Ga 224 Core Option
This course covers the development of sexuality of the human being from in utero to old age.		
Bl 220 01	Microbiology (5) 8-week, MTThF, 10:30-11:30 a.m. Laboratory: Tuesday, 2:30-5:00 p.m.	Davis Ga 332
Introduction to medical microbiology.		
Bl 296 50	Independent Study (1-5) Arranged	Staff Arr
Directed study, lower division. Permission required.		
Bl 496 50	Independent Study (1-5) Arranged	Staff Arr
Directed study, upper division. Permission required.		

Business

Bus 230 01	Principles of Accounting I (Financial) (5) 8-week, MW, 11:50 a.m.- 2:20 p.m.	Ziebell P 351 Bus Core
Introduction to financial accounting concepts with emphasis on the development and interpretation of financial statements. Prerequisite: Sophomore standing.		
Bus 231 01	Principles of Accounting (Managerial) (5) 8-week, MW, 11:50 a.m.- 2:20 p.m.	Tinius P 353 Bus Core
Introduction to the use of accounting information for decision-making in planning and controlling the operation of businesses. Prerequisites: Bus 230, Sophomore standing.		

CLASSES

Course/Section	Description/Credit Session/Time	Instructor Building/Room
Bus 260 01	Business Statistics (5) 8-week, TTh, 5:35-7:55 p.m.	Rivers P 351
Business applications of basic statistics, probability concepts, probability distributions, expectation. Sampling, estimation, hypothesis testing, index numbers, time series analysis. Prerequisites: Mt 130, Sophomore standing.		
Bus 270 01	Law and Business (5) 8-week, Daily, 7:50-9:00 a.m.	Arnesen P 302
Nature and development of the law, structure, and functions of the court, civil and criminal procedure; role of attorneys and introduction to the law of contracts. Prerequisite: Sophomore standing.		
Bus 330 01	Cost Accounting (5) 8-week, MW, 7:50-10:10 a.m.	Ziebell P 351
Determination of manufacturing costs in job order, process and standard cost systems; introduction to methods of cost control. Prerequisites: Bus 231, Junior standing.		
Bus 333 01	Intermediate Accounting II (5) 8-week, MW, 11:50 a.m.-2:20 p.m.	Cleveland LA 203
Theory and development of accounting principles; evolution of theory as it relates to the current state of accounting for liabilities and owners' equities. Prerequisites: Bus 332 and Junior standing.		
Bus 334 01	Intermediate Accounting III (5) 8-week, MW, 5:35-7:55 p.m.	Cleveland P 351
Study of advanced topics in accounting theory and practice with emphasis on financial reporting. Prerequisites: Bus 333, Junior standing.		
Bus 340 01	Business Finance (5) 8-week, Daily, 7:50-9:00 a.m.	Carrithers P 551
Study of the financial policies and practices of business firms, asset management; capital budgeting; cost of capital; management of funds; financing growth. Prerequisites: Ec 271, Bus 231, and Junior standing.		
Bus 350 01	Introduction to Marketing (5) 8-week, Daily, 10:30-11:40 a.m.	Burke P 304
Survey of institutions and essential functions in the marketing system; analysis of marketing mix, product, place, price strategies. Prerequisite: Junior standing.		
Bus 360 01	Production and Operation Management (5) Second, Daily, 1:10-4:10 p.m.	Brown P 304
Survey of the system analysis design and operating techniques for manufacturing and service organizations. Prerequisites: Bus 260 and CSC 113 or 114.		
Bus 380 01	Organization Behavior (5) First, Daily, 1:10-4:10 p.m.	Callahan P 304
Develop understanding of organizational behavior with focus on basic processes, methods involved in diagnosing human situations. Prerequisite: Junior standing.		
Bus 435 01	Auditing (5) 8-week, TTh, 5:35-7:55 p.m.	Staff P 354
Purpose, scope, concepts, and methods used in examining and attesting to financial statement. Prerequisite: Bus 334.		

Course/Section	Description/Credit Session/Time	Instructor Building/Room
Bus 460 01	Computer based Management Information Systems (5) 8-week, TTh, 7:50-10:10 a.m.	Ansari BA 502
Examination of background management elements related to data processing systems. Planning and design of information flows and business systems. Prerequisites: CSC 113 or 114 and Bus 340, Senior standing.		
Bus 482 01	Business Policy and Organization (5) 8-week, MW, 5:35-7:55 p.m.	Stephenson P 354
Case studies of policy and administration of business; original work in analysis and policy decisions. Prerequisites: All business core courses and Senior standing.		
Bus 496 50	Independent Study (1-5) Arranged	Staff Arr
Independent study under the supervision of a faculty member. Prerequisite: Permission of Instructor, Dean, and Adviser.		

Business Graduate Courses

Bus 501 01	Business Statistics (3) 8-week, TTh, 5:35-7:00 p.m.	Toh P 302
Business applications of basic statistics, probability concepts, probability distributions, expectations, sampling, estimation, hypothesis testing, index numbers, time series analysis, forecasting techniques and introduction to simple linear models.		
Bus 502 01	Financial Accounting (3) 8-week, MW, 7:15-8:45 p.m.	Weis P 302
Concepts and principles underlying accounting with special attention to income determination and measurement of assets and equities. Analysis of business performance from accounting viewpoint.		
Bus 505 01	Legal Environment (3) 8-week, MW, 5:35-7:15 p.m.	Staff P 305
Objectives of American legal system, its structure and procedures, dynamics of courts and regulatory commissions. Relationship of law to social change and preservation of society's values; emphasis on legal analysis.		
Bus 506 01	Economic Analysis (3) 8-week, TTh, 7:15-8:45 p.m.	DeKay P 302
Functioning of mixed market economy. Determinants of aggregate level of income, employment and prices. Forecasting and policy analysis, international aspects.		
Bus 507 01	Organization Behavior (3) 8-week, TTh, 5:35-7:00 p.m.	Callahan P 304
Administration process with emphasis on organizational behavior. Basic contributions of social science to the study and practice of management. Analysis of sociopsychological theory and research, decision making, group structure, dynamics and leadership.		
Bus 508 01	Production and Operations Management (3) 8-week, MW, 5:35-7:00 p.m.	Staff P 304
Survey of the system analysis and operating techniques for manufacturing and service organizations. Prerequisites: Bus 500 and 501.		

CLASSES

Course/Section	Description/Credit Session/Time	Instructor Building/Room
Bus 530 01	Managerial Accounting (3) 8-week, MW, 7:15-8:45 p.m.	Tinius P 304
An examination of the basic issues of managerial accounting — product costing and information for planning and control decisions — through problem solving, case analysis, lecture, and class discussion. Prerequisite: Bus 502.		
Bus 549 53	Research in Finance (3) Arranged	Staff Arr
Permission of instructor.		
Bus 550 01	Domestic and International Marketing (3) 8-week, TTh, 7:15-8:45 p.m.	Hampton P 304
Managerial approach to the study of various policy areas in marketing through the use of case studies. Prerequisite: Bus 504.		
Bus 552 01	Marketing Research (3) 8-week, TTh, 5:35-7:00 p.m.	Hampton P 305
Purpose, methods, and techniques of marketing research and description of marketing information systems. Prerequisite: Bus 550.		
Bus 555 01	Marketing Communications (3) 8-week, MW, 7:15-8:45 p.m.	Burke P 306
Role of promotion in marketing: functions of personal selling, advertising, sales promotion, and publicity and their coordination into an effective promotional mix, evaluation, and control of promotion. Prerequisite: Bus 550.		
Bus 559 53	Research in Marketing (3) Arranged	Staff Arr
Permission of instructor.		
Bus 560 01	Management Information Systems (3) 8-week, MW, 5:35-7:00 p.m.	Ansari P 302
Planning, designing, implementing, and evaluating commercial systems. Use of programming concepts for data base management. Development of computer-based management information systems and associated problems. Prerequisites: Bus 500, 501, and 508.		
Bus 562 01	Advanced Statistical Analysis (3) 8-week, TTh, 7:15-8:45 p.m.	Toh P 306
Fundamentals of sampling, analysis of variance, non-parametric methods, multivariate and non-linear regression models, advanced time series analysis. Prerequisites: Bus 501 and 508.		
Bus 569 01	Research Operations/ Systems (3) Arranged	Staff Arr
Permission of instructor.		
Bus 570 01	Managerial Economics (3) 8-week, MW, 5:35-7:00 p.m.	Nickerson P 306
Theory of the consumer, the firm, and the industry, with emphasis on applications to business decision making. Prerequisite: Bus 506.		
Bus 575 01	International Business Enterprise (3) 8-week, TTh, 5:35-7:00 p.m.	DeKay P 306
Economic fundamentals of international trade including the working of the foreign exchange market. National policies and international institutions. Foreign branches and subsidiaries. Multi-national corporations. Centrally planned economies. Developing nations. Prerequisite: Bus 506.		

Course/Section	Description/Credit Session/Time	Instructor Building/Room
Bus 579 53	Research Environmental Area (3) Arranged	Staff Arr
Prerequisite: Permission of instructor.		
Bus 580 01	Organizational Structure and Theory (3) 8-week, TTh, 5:35-7:00 p.m.	Fleenor P 405
Conceptual understanding of organization structure and functioning. Examination of various forces operating in an organization. Studies from various disciplines to understand the organizational functional and dysfunctional aspects. Introduction to change. Prerequisite: Bus 507.		
Bus 585 01	Management of Change (3) Fridays, June 27, July 11, 25 5:30-8:30 p.m. Saturdays, June 28, July 12, 26, 9:00 a.m.-3:00 p.m.	Mills, D. P 302
A course on the future: forecasting methods, trends, scenarios. Discussions of change processes (diffusion, revolution, attitude change) and methods of responding. Offered also under Pub 585.		
Bus 586 01	Entrepreneurship and Small Business Management (3) 8-week, Tuesday, 7:15-10:00 p.m.	Stephenson P 305
Procedures and problems in starting and operating a successful small business enterprise. Prerequisite: Bus 580.		
Bus 591 SA 01	Seminar in Negotiating, Mediating, and Advocating (3) Second, MW, 7:15-8:45 p.m.; Saturday, July 19, 9:30 a.m.-5:00 p.m.; Friday, August 1, 5:00-10:00 p.m. (P 405)	Mandelbaum/ Fleenor P 401
Bus 595 01	Business Policy (3) 8-week, Thursday, 7:10-10:00 p.m.	Fleenor P 305
Policy problems faced by chief administrative officers. Determination of objectives; development of policies to achieve objectives; organization of executive personnel to implement policies; coordination of the organization; and adjustments to changes in environment. Case study seminars with simulation (business gaming). Builds upon the Core. Prerequisite: All Management Core.		
Bus 596 50	Independent Study (1-3) Arranged	Staff Arr
Prerequisite: Permission of instructor and Dean.		

Chemistry

Ch 110 01	Fundamentals of Chemistry (5) 8-week, Daily, 10:30-11:30 a.m. Core Option	Smith Ba 502
An introduction to chemistry for students with little preparation in the sciences. Can serve as a preparation for Ch 101 or Ch 121.		
Ch 241 01	Organic Chemistry 1 (4) First, Daily, 9:20-11:30 a.m.	Meany Ba 501
Beginning organic chemistry for chemistry and biology majors and premed students. Prerequisites: Ch 123 and 133.		

(Chemistry continued, next page)

CLASSES

Course/Section	Description/Credit Session/Time	Instructor Building/Room
----------------	---------------------------------	--------------------------

Chemistry (Continued)

Ch 242 01	Organic Chemistry 2 (4) Second, Daily, 9:20-11:30 a.m. Continuation of Ch 241. Prerequisites: Ch 241 and 251.	Meany Ba 501
Ch 251 01	Organic Chemistry Lab 1 (2) First, TTh, 1:10-5:10 p.m. Laboratory for Ch 241. Corequisite: Ch 241.	Meany Ba 501
Ch 252 01	Organic Chemistry Lab 2 (2) Second, TTh, 1:10-5:10 p.m. Laboratory for Ch 242. Corequisite: Ch 242. Prerequisite: Ch 251.	Meany Ba 501
Ch 499 50	Undergraduate Research (1-6) Arranged Permission of Chair.	Staff Arr

Community Services

CS 491 SA 01	The Crisis of Suicide (5) First, Daily, 8:20-10:20 a.m. Explores the concept of emotional crisis and identifies processes for intervention in self-destructive behavior patterns. Special focus on the problem of adolescent suicide, using case histories from local practice. Also offered under Sc 491 SA 01 and Ed 491 ST 01.	Tolson P 455
CS 491 SB 01	Social Work with Children (5) 7-week, Daily, 10:30-11:40 a.m. A practice-oriented course focusing on methods and techniques of working with children in social and interpersonal conflict situations at home, at school, and in the community. Focuses on those years that children are most often referred for help, latency, and adolescence.	Tolson LA 208

Computer Science

CSC 113 01	Introductory Programming with BASIC (5) 8-week, Daily, 8:00-9:00 a.m. An Introductory class in programming, including the use of the BASIC language. Several programs will be implemented.	Chang Ba 202
CSC 113 02	Introductory Programming with BASIC (5) 8-week, Daily, 10:30-11:30 a.m.	Staff Ba 202
CSC 114 01	Introductory Programming with FORTRAN (5) 8-week, Daily, 9:20-10:20 a.m. An introductory class in programming, including the use of the FORTRAN language. Several programs will be written and run on the University computer system. Prerequisite: Mt 101.	Ehlers Ba 202
CSC 150 01	Introduction to Computer Science (5) 8-week, MW, 5:30-8:00 p.m. An introduction to the discipline of computer science, including coverage of basic concepts of hardware, software, algorithms, and control/data structures. Prerequisite: CSC 113 or 114.	Stark Ba 202

Course/Section	Description/Credit Session/Time	Instructor Building/Room
----------------	---------------------------------	--------------------------

CSC 170 01	Intermediate Programming with PASCAL (5) 8-week, TTh, 5:30-8:00 p.m. A second level course in computer programming, involving the use of PASCAL language. Several programs will be assigned involving fundamental algorithms and data structures. Prerequisites: CSC 150 and Mt 135.	Stark Ba 301
CSC 180 01	Intermediate Programming with COBOL (5) 8-week, TTh, 5:30-8:00 p.m. A second level course in computer programming, involving the use of the COBOL language. COBOL continues to be the most widely used language for business applications. Prerequisites: CSC 150.	Staff Ba 202

Criminal Justice Program

CJP 378 01	Field Experience I (5) 7-week, Arranged Permission of Director.	Kagi Arr
CJP 379 01	Field Experience II (5) 7-week, Arranged Permission of Director.	Kagi Arr
CJP 450 01	Politics of the Criminal Justice System (5) 7-week, Daily, 7:50-9:00 a.m. Identification and analysis of political context of crime, criminal behavior, and institutions of criminal justice.	Kagi P 456
CJP 496 50	Independent Study (1-5) 7-week, Arranged Permission of Director.	Kagi Arr

Economics

Ec 271 01	Principles of Economics—MACRO (5) 8-week, Daily, 9:10-10:20 a.m. Organization, operation, and control of the American economy and its historical and socio-political settings; problems of inflation, unemployment, taxation, the public debt, money and banking, growth. Prerequisite: Sophomore standing.	Nickerson P 302 Core Option Bus Core
-----------	---	---

Education

One-Week Courses

Ed 491 SA 01	Peace-ing It Together (3) June 16-20, Daily, 8:00 a.m.-3:00 p.m. Theory and practice of an elementary peace education program including peace and justice issues. (Reduced tuition \$150.)	Fellers P 405
--------------	--	------------------

CLASSES

Course/Section	Description/Credit Session/Time	Instructor Building/Room
Ed 491 SB 01	Beginning Instructional Theory into Practice (3) June 16-20, Daily, 8:00 a.m.-3:00 p.m.	Perri P 452
The elements of successful teaching, distilled from the literature in human learning and from observation of master teachers by Madeline Hunter and her colleagues at UCLA. (Reduced tuition \$150)		
Ed 491 SC 01	Peaceful Procedures (3) June 23-27, 8:00 a.m.-3:00 p.m. P 306	Fellers
Help fight stress and teacher burnout! Emphasizes theory and practice of peaceful organizational methods. (Reduced tuition \$150)		
Ed 491 SD 01	The Shape of Jesus in Our Classrooms (1) August 4-8, 9:00-11:00 a.m.	Beattie P 305
Practical helps to "shape-up" our religious learning, enthusiasm, commitment, and dedication to Jesus. (Reduced tuition \$50)		
Ed 491 SE 01	Catholic School Leadership: Christian Formation (1) June 23-27, Daily, 9:00-11:00 a.m.	Gedaro P 354
This course will provide information, resources and activities which focus on the concepts of Christian formation, staff development and spiritual leadership. (Reduced tuition \$50)		
Ed 491 SF 01	Alcohol and Schools (2) July 7-11, Daily, 9:00 a.m.-3:00 p.m.	Deiro P 405
Alcohol and drug problems in adolescents. How educational professionals can prevent and recognize student problems. Also offered under Alc 491 SB 01.		

Two-Week Courses

Ed 450 01	Gifted Education: Introduction (3) June 30-July 11, Daily, 1:10-3:50 p.m.	Langdon/Bronson P 455
An introduction to gifted education including definition of areas of giftedness, identification, curriculum modes, program organization, parent involvement, attitudes concerning giftedness, evaluation of student performance.		
Ed 491 SG 01	Symposium on Alcoholism (3) Schnell/Roise/ June 16-27, Daily, 9:00 a.m.-3:30 p.m. Royce P 401	
Special emphasis on coping with alcoholism problems in educational systems. Guest lecturers will discuss special roles that can be played by teachers, counselors, nurses, and administrators in confronting alcohol/drug problems within school systems and taking effective, positive action. Also offered under Alc 400 01 and Psy 490 01.		
Ed 491 SH 01	The Drug Scene (3) June 19-July 2, Daily, 1:10-3:50 p.m.	Lucey P 451
Survey of the misuse and abuse of licit and illicit drugs. Scientific information for concerned school personnel presented by professional people working with drug problems and users.		

Ed 491 SJ 01	Word Processing for Teachers (2) June 30-July 11, Daily, 1:10-3:10 p.m.	Monroe P 507
Word processing for teachers for both instructional and productivity uses. No previous computer experience required.		
Ed 491 SK 01	Teaching Science: Grades 3 through 6 (3) June 30-July 11, Daily, 1:10-3:50 p.m.	Backman P 456
Methods and techniques for teaching science in the upper elementary grades. (Reduced tuition \$150)		
Ed 491 SL 01	Workshop: Techniques in Transition and Vocational Placement for the Handicapped (3) June 30-July 11, Daily, 1:10-3:50 p.m.	Hilton P 352
Examination of practices and procedures used within the school and community to prepare handicapped students for the transition to a vocational placement.		
Ed 491 SM 01	Introduction to Logo (2) July 14-25, Daily, 9:00-11:00 a.m.	Marion P 507
An introduction to the Logo programming language. No previous computer experience required.		
Ed 491 SN 01	Data Bases for Teachers (2) July 14-25, Daily, 3:00-5:00 p.m.	Towner P 507
Data base software for teachers, for both instructional and record keeping uses. No previous computer experience required.		
Ed 491 SP 01	Workshop: Preparing the Handicapped for Employment (3) July 14-25, Daily, 1:10-3:50 p.m.	Hilton P 451
Analysis of techniques for training and placing handicapped adolescents in a variety of vocational settings.		
Ed 491 SQ 01	Intermediate Logo (2) July 28-August 8, Daily, 9:00-11:00 a.m.	Marion P 507
Intermediate topics in the Logo programming language, including recursion and list processing. Some familiarity with Logo required.		
Ed 491 SR 01	The Literary Turtle: Logo and Teaching Writing (2) July 28-August 8, Daily, 3:00-5:00 p.m.	Marion P 507
The Logo programming language's list processing capabilities offer new ways to teach writing. Some familiarity with Logo is required.		
Ed 553 01	Gifted Education: Methods of Exceptionality (3) July 14-25, Daily, 1:10-3:40 p.m.	Staff P 455
Teaching strategies for teachers of gifted education. Prerequisites: Ed 450 and 547.		

CLASSES

Course/Section	Description/Credit Session/Time	Instructor Building/Room
----------------	---------------------------------	--------------------------

First Four-Week Term (Education continued)

Adjusted First Term to accommodate extended school year. Thursday, June 19, to Tuesday, July 15, including Saturday, June 21.

Ed 424 01	Introduction to Learning Disabilities (3) Adjusted First Session, Daily, 7:50-9:00 a.m.	Denoon P 451
-----------	--	-----------------

History and current problems in diagnosis and remediation of learning disabilities.

Ed 491 SS 01	Early Childhood: Special Education (3) Adjusted First, Daily, 9:10-10:20 a.m.	Snow P 451
--------------	--	---------------

An overview of types of students served by programs; intervention strategies to assist such students.

Ed 491 ST 01	The Crisis of Suicide (5) June 16-July 11, Daily, 8:20-10:20 a.m.	Tolson P 455
--------------	--	-----------------

Focus on identifying, recognizing, and understanding suicidal behaviors and responding in ways that expand options and make the choice of life more likely. Also offered under CS 491 SA 01 and Sc 491 SA 01.

Ed 491 SU 01	Thinking Skills in the Curriculum (3) June 16-July 11, TTh, 4:10-7:10 p.m.	Bumgarner P 453
--------------	---	--------------------

Survey of the current thinking skills movement. Presentations by local trainers will be included.

Ed 500 01	Introduction to Research/Graduate Study (3) Adjusted First, Daily, 10:30-11:40 a.m.	Zarter P 451
-----------	--	-----------------

Introduction to research skills and literature in students' fields. Includes an orientation to graduate studies. Ordinarily taken as first graduate course.

Ed 501 01	Philosophy of Education (3) Adjusted First, Daily, 11:50 a.m.-1:00 p.m.	Haggerty P 451
-----------	--	-------------------

Philosophical foundations of education and related fields.

Ed 507 01	Principles of Educational Law (3) Adjusted First, Daily, 7:50-9:00 a.m.	Driscoll P 454
-----------	--	-------------------

Introduction to American legal system and principles affecting education. Emphasis on constitutional, statutory, regulatory case precedents applicable nationally to all levels of education.

Ed 509 01	Developmental School Counsel (3) Adjusted First, TTh, 1:10-4:10 p.m.	Ingram P 353
-----------	---	-----------------

Emphasizes expanded role of the school counselor as psychological educator, consultant, and systems change agent. Studies models of these functions and promotes application to students' school setting.

Course/Section	Description/Credit Session/Time	Instructor Building/Room
----------------	---------------------------------	--------------------------

Ed 517 01	Group Counseling: Theories and Practice (3) June 16, 17, 19, MTTh, 4:20-6:50 p.m.; June 23-July 14, MWF, 9:10-11:10 a.m.	Owen P 454
-----------	---	---------------

Emphasizes group counseling theory. Provides group experiences (including required 10-hour marathon) to integrate theory and procedures. Discusses possible applications. Prerequisites: Ed 510 and 511.

Ed 522 01	Child Psychology/Learning (3) Adjusted First, Daily, 11:50 a.m.-1:00 p.m.	Guest P 302
-----------	--	----------------

Investigation of various theories of child development and learning.

Ed 524 01	Seminar: Behavior Disorders (3) Adjusted First, Daily, 11:50 a.m.-1:00 p.m.	Denoon P 354
-----------	--	-----------------

Overview of practices and rationales in the education of the behavior disordered and/or emotionally disturbed child. Structuring of individualized remedial programs and techniques which utilize existing agencies and personnel.

Ed 526 01	Reading Practicum Workshop (3) Adjusted First, Arranged	Rudeen Arr
-----------	---	---------------

Emphasis on task analysis lesson design using ECRI instructions for word recognition and comprehension skills; recording and reporting student learning increments of study of role and application of materials. Taken concurrently with Ed 532. Permission of Chairperson.

Ed 532 01	Field Practicum in Reading (6) Adjusted First, Arranged	Rudeen Arr
-----------	---	---------------

Supervised field experience in diagnosis and teaching of reading. Prerequisite: Ed 336 or 337.

Ed 534 01	Seminar: Teaching Reading (3) Adjusted First, Arranged	Noe Arr
-----------	--	------------

Development of reading skills at all levels; examination and evaluation of current research, reading materials, practices, and programs.

Ed 536 01	Supervision of Instruction (3) June 19, 21, 24, 26; July 1, 3, 8, 10, 15 and one other day, 7:50-10:20 a.m.	Haggerty P 453
-----------	---	-------------------

Improvement of instruction through supervisory leadership.

Ed 540 01	Fundamentals of Curriculum (3) June 20-July 14, MWF, 7:50-10:20 a.m.	Tresvant P 453
-----------	---	-------------------

Historical, philosophical foundations, principles, types and methods of curriculum development and organization.

Ed 581 01	Fundamentals of Administration (3) Adjusted First, Daily, 10:30-11:40 a.m.	Barker P 453
-----------	---	-----------------

Administrative theory, style, criteria, responsibilities, process, and management by objective.

CLASSES

Course/Section	Description/Credit Session/Time	Instructor Building/Room
Ed 587 01	Community Relations (3) Adjusted First, Daily, 11:50 a.m.-1:00 p.m.	Pickel P 454
Purposes and media for informing the general public and patrons about programs and needs; roles of professional personnel and administrators.		
Ed 604 01	Workshop: Organizational Development and Change (3) Adjusted First, MWF, 1:30-4:30 p.m.	Forbes/Wahle/ Morford P 305

Second Four-Week Term

Adjusted Second Term dates accommodate extended school year. Wednesday, July 16, to Saturday, August 9.

Ed 425 01	Psychology of the Exceptional Child (3) Adjusted Second, Daily, 9:10-10:20 a.m.	Staff P 405
Study of the atypical child who differs from the norm to well above or below the average; tests for evaluation, consideration of remedial techniques. Prerequisite: Ed 322 or permission of instructor.		
Ed 428 01	Language Development (3) Adjusted Second, Daily, 10:30-11:40 a.m.	Staff P 452
An introduction to critical features of the developmental processes of receptive and expressive language with consideration of diagnosis, curriculum and method.		
Ed 431 01	Early Education and Child Development (3) Adjusted Second, Daily, 7:50-9:00 a.m.	Chattin-McNichols P 452
Current issues and trends in early childhood education — birth through eight years. Emphasis on preschool and kindergarten. Topics will include infant programs, management of learning centers, and parent participation in early education.		
Ed 460 01	Computers and Instructional Technology (3) Adjusted Second, Daily, 1:10-2:20 p.m.	Chattin-McNichols P 507
Uses of computers in the elementary and/or secondary school classroom. Software examined, ethical issues considered.		
Ed 500 02	Introduction to Research and Graduate Study (3) Adjusted Second, Daily, 7:50-9:00 a.m.	Zarter P 405
Introduction to research skills and literature in student fields. Includes an orientation to graduate studies. Ordinarily taken as first graduate course.		
Ed 515 01	Multicultures (3) Adjusted Second, Daily, 9:10-10:20 a.m.	Sorensen P 405
Examination of a wide variety of cultures with implications for helping professions.		

Ed 521 01	Adult Psychology/Learning (3) Adjusted Second, TThF, 11:50 a.m.-2:20 p.m.	Crow P 452
Major developmental stage theories and predictable adult crises/passages. Application to both intra and interpersonal development and relations. For educators, counselors, and other helping professionals.		
Ed 523 01	Adolescent Psychology/Learning (3) Adjusted Second, MWF, 11:50 a.m.-2:20 p.m.	O'Connor P 305
Studies in adolescent psychology and learning.		
Ed 535 01	Reading in the Content Fields (3) Adjusted Second, Daily, 7:50-9:00 a.m.	Noe P 304
Decoding and vocabulary analysis comprehension, reading rate, study skills, and reading interests as related to specific content fields. Prerequisite: Ed 336 or 337.		
Ed 543 01	Corrective Techniques in Teaching of Reading (3) Adjusted Second, Daily, 9:10-10:20 a.m.	Thorleifson P 452
Identification of components of effective corrective reading programs; description and application of specific methods and materials; evaluation and design of corrective reading approaches. Prerequisite: Ed 533.		
Ed 544 01	Seminar: Instructional Effectiveness (3) Adjusted Second, Daily, 10:30-11:50 a.m.	Sorensen P 306
In-depth analysis of current theories and research on the teaching/learning relationship. Individualized application for experienced teachers at all grade levels and subject areas.		
Ed 583 01	School Finance (3) Adjusted Second, Daily, 11:50 a.m.-1:00 p.m.	Hone P 405
Historical development, balanced taxation, school support program, problems, and controversies.		
Ed 584 01	Washington School Law (3) Adjusted Second, Daily, 7:50-9:00 a.m.	Howard P 306
School laws of Washington based on its constitution, statutes, administrative code and court precedents. Emphasis on application to the K-12 system. Prerequisite: Ed 507.		
Ed 586 01	Administration of Professional Personnel (3) Adjusted Second, Daily, 10:30-11:40 a.m.	Barker P 351
Assists mid-management educational administrator to develop a comprehensive plan for meeting faculty and staff personnel needs equitably and effectively.		
Ed 594 01	School Plant and Facilities Planning (3) Adjusted Second, Daily, 9:10-10:20 a.m.	Hone P 352
School plant requirements for new construction and remodeling. Covers projections and site selection; staff and patron planning; leadership of the administrator.		

CLASSES

Course/Section	Description/Credit Session/Time	Instructor Building/Room
----------------	---------------------------------	--------------------------

Ed 600 01	Workshop in Educational Leadership (9) July 14-August 8, Daily 9:00 a.m.-4:00 p.m.	Forbes/Wahle/ Morford LL 114
-----------	--	------------------------------------

An integrated 4-week workshop in educational leadership. Includes theoretical and practical study of leadership in educational institutions. Required first course in Ed.D. Program. Summers only.

Full Eight-Week Term

June 16-August 8 unless otherwise indicated.

Ed 391 SA 01	Contemporary Russia (3) Spring and Summer Quarters, Arr Arranged	Carter
--------------	--	--------

This course involves a series of evening lectures which will be offered during Spring Quarter and will culminate with a summer tour of Russia. Directed by Mr. Richard Carter. Also offered under FI 391 SA 01. For information, contact Department of Foreign Languages.

Ed 510 01	Fundamental Counseling Skills (3) 8-week, TTh, June 17, 19, 4:20-6:50 p.m.; June 24- August 7, 9:10-11:40 a.m.	Zielinski P 551
-----------	---	--------------------

Focus on basic counseling skill training through intensive small group practice. Designed to complement Ed 511 which should be taken concurrently. Additional three 1-hour labs.

Ed 511 01	Counseling Theories (3) 8-week, MW, June 16, 18, 4:20-6:50 p.m.; June 23- August 6, 9:10-11:10 a.m.	Staff P 551
-----------	--	----------------

Theoretical foundations of major counseling approaches with opportunities for in-class practice in simulated counseling interview. Complement to Ed 510 which should be taken concurrently.

Ed 512 01	Counseling and Informational Sources (3) 8-week, Tuesday, 7:00- 10:00 p.m.	Crow P 352
-----------	--	---------------

Study of vocational development. Exploration of educational, social, vocational, and referral sources. Prerequisite: Ed 511.

Ed 527 01	Counseling Tests and Measurements I (3) 8-week, Monday, 5:00-8:00 p.m.	Calsyn P 405
-----------	---	-----------------

Familiarization with measurement concepts and commonly used tests via participant test-taking and analysis. Extra lab time required. Prerequisite: Ed 506.

Ed 537 50	Curriculum Independent Study (1-4) 8-week, Arranged	Haggerty/Guest/ Hilton Arr
-----------	--	----------------------------------

Library research in curriculum. Approximately 30 hours of reading and allied assignments per credit. Reports will include analysis and critical appraisal of materials read. Prerequisite: Permission of adviser. Graduate students only.

Ed 539 01	Curriculum Graduate Project (3) 8-week, Arranged	Haggerty/Guest Hilton Arr
-----------	---	---------------------------------

Scholarly graduate project designed to improve some aspect of education. Prerequisite: Graduate core requirements and approval of adviser.

Course/Section	Description/Credit Session/Time	Instructor Building/Room
----------------	---------------------------------	--------------------------

Ed 547 01	Diagnosis and Prescription (3) 7-week, June 19-August 2, MW, 1:10-3:40 p.m.	Petersen P 302
-----------	---	-------------------

Comparison of various methods used in the diagnosis of learning problems. Selection, administration and analysis of tests, plus writing educational prescriptions. Prerequisite: Ed 424.

Ed 551 01	Counseling Practicum (4) 8-week, Thursday, 4:00- 8:00 p.m.	Bestock P 551
-----------	--	------------------

Supervised counseling experience in which the counselor candidate is responsible for actual counseling cases, with supervision. Prerequisites: Ed 510 and 511. Graduate students only.

Ed 555 50	Practicum: Special Education (3-6) Arranged	Hilton Arr
-----------	--	---------------

Diagnostic and prescriptive teaching with children who have learning or behavior problems. Laboratory course. Prerequisite: Permission of instructor.

Ed 557 50	Counseling Independent Study (1-3) Arranged	Staff Arr
-----------	--	--------------

Intensive reading and field research in a topic agreed upon by adviser and student. 30 hours work per credit. Graduate students only. Prerequisite: Permission of adviser.

Ed 560 01	Family Counseling (3) 8-week, Wednesday, 4:20-7:20 p.m.	Bestock P 405
-----------	---	------------------

Demonstration/discussion focusing on dysfunctional families, including theoretical and practical applications.

Ed 564 01	Counseling Internship I (4) 8-week, Arranged	O'Connor/Owen/ Zielinski Arr
-----------	---	------------------------------------

Supervised experiences in a school or agency. Taken in final two to three quarters of graduate program with permission and application made two quarters earlier. On-campus seminar required first and second quarters.

Ed 565 01	Counseling Internship II (4) 8-week, Arranged	O'Connor/Owen/ Zielinski Arr
-----------	--	------------------------------------

Ed 566 01	Counseling Internship III (3) 8-week, Arranged	O'Connor/Owen/ Zielinski Arr
-----------	---	------------------------------------

Ed 590 01	Administrative Internship I (3) Arranged	Barker Arr
-----------	---	---------------

Ed 591 01	Administrative Internship II (3) Arranged	Barker Arr
-----------	--	---------------

Ed 592 01	Administrative Internship III (3) Arranged	Barker Arr
-----------	---	---------------

Ed 596 01	Administrative Graduate Project (3) 8-week, Arranged	Barker Arr
-----------	---	---------------

Scholarly graduate project designed to improve some aspect of professional assignment. Prerequisites: Graduate core requirements and approval of coordinator.

CLASSES

Course/Section	Description/Credit Session/Time	Instructor Building/Room
----------------	---------------------------------	--------------------------

Ed 597 50	Administration Independent Study (1-3) 8-week, Arranged	Barker Arr
-----------	--	------------

Intensive library research. Approximately 30 hours of reading and allied assignments for each credit. Completion reports will include analysis and critical appraisal of materials read. Prerequisite: Permission of adviser.

Ed 605 50	Independent Study in Educational Leadership (1-5) Arranged	Forbes/Wahle Arr
-----------	--	------------------

Permission of instructor.

Ed 606 01	Independent Study in Educational Leadership (1-5) Arranged	Forbes/Wahle Arr
-----------	--	------------------

Permission of instructor.

Ed 607 01	Independent Study in Educational Leadership (1-5) Arranged	Forbes/Wahle Arr
-----------	--	------------------

Permission of instructor.

Ed 608 01	Internship in Educational Leadership (1-9) Arranged	Forbes/Wahle Arr
-----------	---	------------------

Permission of instructor.

Ed 613 01	Project Continuation (0) Arranged	Morford Arr
-----------	-----------------------------------	-------------

Ed 649 01	Doctoral Enrollment (0) Arranged	Morford Arr
-----------	----------------------------------	-------------

Engineering

Civil Engineering

ECL 519 01	Engineering Project (3) Arranged	Majors E 105
------------	----------------------------------	--------------

Preparation of a written engineering report on some facet of transportation. Oral presentation in seminar.

ECL 520 01	Thesis (6) Arranged	Majors E 105
------------	---------------------	--------------

Research in transportation engineering culminating in the writing of a thesis. Oral presentation in seminar. Prerequisite: Admission to candidacy for the degree Master of Transportation Engineering.

Mechanical Engineering

EML 210 01	Statics (5) 8-week, Daily, 9:20-10:20 a.m.	Wiedemeier E 114
------------	--	------------------

Force and Moment equilibrium, distributed forces, friction, virtual work. Prerequisites: Mt 135 and Ph 200.

EML 230 01	Dynamics (5) 8-week, Daily, 9:20-10:20 a.m.	Gehlen E 111
------------	---	--------------

Kinematics and kinetics of particles, systems of particles and rigid bodies. Impulse-Momentum, Work-Energy. Prerequisites: EML 210 and Mt 136.

EML 321 01	Thermodynamics (4) 8-week, Daily, 9:20-10:20 a.m.	Robel E 110
------------	---	-------------

Thermal properties of ideal and real gases, liquids, vapors, and mixtures. Conservation of energy. Conversion of thermal energy to work. Power, efficiency, cycles, compressible gas flow. Prerequisite: ECL 331.

Course/Section	Description/Credit Session/Time	Instructor Building/Room
----------------	---------------------------------	--------------------------

Software Engineering

ESW 591 SA 01	Special Topics — C/UNIX (1) Second, Tuesday, 6:00-8:05 p.m.	Staff Ba 201
---------------	--	--------------

An introduction to the UNIX operating system and C programming language. This course is intended primarily for MSE students planning to enroll in ESW 585, Software Engineering Project, Fall 1986.

English

En 110 01	Freshman English (5) 7-week, Daily, 10:30-11:40 a.m.	Tadie LA 223 Core
-----------	--	----------------------

Skills development in written expression with attention to grammar, usage, and the rhetoric of description, deliberation, and argument in formal and informal prose. Pedagogy: the writing of essays modeled on readings from eminent authors, past and present.

En 132 01	American Literature (5) 7-week, Daily, 10:30-11:40 a.m.	Spiers LA 222 Core Option
-----------	---	------------------------------

Survey of American Literature from beginning to 20th Century.

En 133 01	World Literature (5) 7-week, Daily, 9:10-10:20 a.m.	MacLean LA 223 Core Option
-----------	---	-------------------------------

Reading, analysis, and discussion of the world's literary classics from ancient to modern times.

En 175 01	Introduction to Literature (5) 7-week, Daily, 7:50-9:00 a.m.	Tadie LA 223
-----------	--	--------------

Introduction to the study of novels, plays, poetry, and essays.

En 382 01	Major American Novelists (5) 8-week, MW, 5:30-8:00 p.m.	Weihe LA 206
-----------	---	--------------

A critical reading of important novels by Melville, Twain, Hemingway, Flannery O'Connor, Bellow, and other modern writers.

En 391 SA 01	Literary Source and Stream: The Influence of the Bible and the Classics (5) 7-week, Daily, 9:10-10:20 a.m.	Carroll LA 203
--------------	--	----------------

This class will compare biblical and classical stories, motifs, and genres, in the Western tradition through ancient to modern writings.

En 491 SA 01	Advanced Grammar and Rhetoric Review (5) 7-week, Daily, 7:50-9:00 a.m.	Spiers LA 206
--------------	--	---------------

Review of advanced grammar and rhetoric.

En 491 SB 01	The American Transcendentalists (5) 7-week, Daily, 11:50 a.m.-1:00 p.m.	MacLean LA 203
--------------	---	----------------

A consideration of American Transcendentalism as a main tradition of both the 19th and 20th centuries, beginning with the essayists and novelists of New England and extending into selected modern poets.

En 492 SA 01	American West in Film and Literature (5) 8-week, TTh, 5:30-8:00 p.m.	Weihe LA 208
--------------	--	--------------

Examines classic films and literature, from Crane's *The Bride Comes to Yellow Sky* to *Shane*, *Easy Rider*, and *Paris, Texas*, which illuminate the mythic patterns of the American West.

CLASSES

Course/Section	Description/Credit Session/Time	Instructor Building/Room
----------------	---------------------------------	--------------------------

Fine Arts

Art

Art 221 01	Drawing (2) 7-week, MWF, 10:30-11:40 a.m.	Herard Bu 102
------------	--	---------------

Study of line and value in the delineation of form; training in awareness, perception and handling of structure and space indication.

Art 334 01	Graphics (2) 7-week, TTh, 10:30-11:40 a.m.	Herard Bu 104
------------	---	---------------

Principles and techniques of lithography.

Art 351 01	Sculpture (2) 7-week, MWF, 11:50 a.m.-1:00 p.m.	Herard Bu 104
------------	--	---------------

Principles and practices toward realizing three-dimensional forms.

Art 370 01	Arts and Crafts (5) Second, Daily, 1:10-3:25 p.m.	Herard Bu 104
------------	--	---------------

Experience in artistic expression in basic art media for elementary and secondary teachers.

Art 491 SA 01	Japanese Woodblock (2) First, TTh, 1:10-3:25 p.m.	Thiel Bu 106
---------------	--	--------------

Introduction to techniques of Japanese Woodblock. Carving of blocks, preparation of papers, and printing process. Hanga method employs water colors and a variety of woods. No auditors except by permission of instructor.

Art 491 SB 01	Japanese Calligraphy (2) Second, TTh, 1:10-3:25 p.m.	Thiel Bu 106
---------------	---	--------------

Designed for beginning and continuing students, and comprises the aesthetics, history, and techniques of this art form. Three styles will be used to demonstrate works of ancient masters. Experience in Japanese not required. No auditors except by permission of the Instructor.

Art 491 SC 01	Introduction to Northwest Coast Indian Carving (2) July 21-August 1, Daily, 1:00-3:00 p.m.	Schoppert Bu 102
---------------	---	------------------

An intensive workshop in which students will learn about Northwest Coast art, make their own carving tools, and produce a carving. See "Of Special Interest" section.

Drama

Dr 491 SA 01	Video Profiles (5) Second, Daily 8:00-10:00 a.m.	Dore Bu 119
--------------	---	-------------

Designed for people who will appear in public in various roles and situations; interviews, group discussions, panels, and demonstrations. Students will be videotaped so they may study themselves and evaluate the effectiveness of their appearance.

Music

Mu 110 50	*Piano Lessons (1-2) 7-week, Arranged	Barnes Arr
Mu 111 50	*Voice Lessons (1-2) 7-week, Arranged	Schneider Bu 108

Course/Section	Description/Credit Session/Time	Instructor Building/Room
----------------	---------------------------------	--------------------------

Mu 114 01	Music Fundamentals (5) First, Daily, 10:30 a.m.-12:40 p.m.	Blyth Bu 117
-----------	---	--------------

Fundamentals and methods of music leading to an effective music program in the elementary schools.

Mu 123 50	*Classic Guitar Lessons (1-2) 7-week, Arranged	Smith, W. Arr
-----------	---	---------------

Mu 125 50	*Organ Lessons (1-2) 7-week, Arranged	Olson Arr
-----------	--	-----------

Mu 310 50	*Piano Lessons (1-2) 7-week, Arranged	Barnes Arr
-----------	--	------------

Mu 311 50	*Voice Lessons (1-2) 7-week, Arranged	Schneider Arr
-----------	--	---------------

*See Instructor or department office before beginning of term to schedule lessons. Classes are credit/no credit. No Auditors.

Foreign Languages

Fr 115 01	French Language I, II, III (15)	Milan/Dozer
Fr 125 01	8-week, Daily,	LA 208
Fr 135 01	9:20 a.m.-12:50 p.m.	

Sp 115 01	Spanish Language	Plaza/Staff
Sp 125 01	I, II, III (15)	LA 206
Sp 135 01	8-week, Daily,	
	9:20 a.m.-12:50 p.m.	

These intensive 15-credit programs are taught by skilled specialists in the Marchand Method. The courses enable the student to understand, speak, read, write, and think in the language taught, within a limited vocabulary. These courses take the beginning student through the first year of college French and Spanish in one quarter.

FI 191 SA 01	Business Spanish (5) 8-week, TTh,	Plaza
	5:30-8:00 p.m.	LA 206

This course will deal with the basic Spanish structures related to business situations: banking, export/import, legal matters, real estate, and others. Students should have a basic knowledge of Spanish.

FI 391 SA 01	Contemporary Russia (3) Arranged	Carter Arr
--------------	-------------------------------------	------------

This course involves a series of evening lectures which will be offered during Spring Quarter and which will then culminate with a summer tour of Russia directed by Mr. Richard Carter. For information, contact the Department of Foreign Languages. Also offered under Ed 391 SA 01.

General Science

ISC 291 SA 01	Cosmology (5) 7-week, Daily,	Deltete
	9:10-10:20 a.m.	P 456
		Core Option

Discussion of recent cosmological theory, centering on the genesis, evolution, and ultimate fate of the universe. Topics will include the Big Bang, cosmic expansion, and the Giant Crunch; space, time, and black holes; order, disorder, and the emergence of life; the Anthropic Principle and the relations of cosmology to theology. Also offered under P1 300 01.

CLASSES

Course/Section	Description/Credit Session/Time	Instructor Building/Room
ISC 320 01	Geology and Mineralogy of the Pacific Northwest (2) 8-week, TTh, 1:10-2:10 p.m.	Smith Arr Core Option
A field-study course examining the general geological setting of the Northwest. Methods of field study and reporting will be stressed.		
ISC 330 01	Field Biology of the Northwest (2) 8-week, TTh, 2:10-3:10 p.m.	Safford Arr Core Option
An introduction to the life zones, habitats and some plants and animals of special interest in the Northwest. Fees will be charged for field trips.		

History

Hs 104 01	Western Civilization I (5) 7-week, Daily, 11:50 a.m.-1:00 p.m.	Mann LA 220 Core Option
The development of Western civilization from prehistoric times to the 18th century.		
Hs 105 01	Western Civilization II (5) 7-week, Daily, 11:50 a.m.-1:00 p.m.	Parry LA 221 Core Option
The development of Western civilization from the 18th to the late 20th century.		
Hs 231 01	Survey of the United States (5) 7-week, Daily, 7:50-9:00 a.m.	Johnson LA 220 Core Option
Events, movements, ideas, and institutions of American history from discovery to the present.		
Hs 281 01	Survey of Far East Since 1900 (5) 7-week, Daily, 9:10-10:20 a.m.	Mann LA 220 Core Option
Domestic and international development of China, Japan, and the states of Southeast Asia.		
Hs 339 01	Recent United States (5) 7-week, Daily, 10:30-11:40 a.m.	Johnson LA 220
The culture of the 1920's, the Great Depression, World War II, Contemporary American Society.		
Hs 341 01	The Pacific Northwest (5) 7-week, Daily, 9:10-10:20 a.m.	Saltvig LA 222
Past development and present problems of the State comprising the Pacific Northwest, with emphasis on Washington State.		
Hs 391 SA 01	Biography As History (5) 7-week: Daily, 9:10-10:20 a.m.	Parry LA 221
An introduction to the problems of biography as a form — main currents in the history of biography and the problems of the relationship of history and biography. Readings in select biographies in European and American history.		
Hs 392 SA 01	History of Science (5) 7-week, Daily, 10:30-11:40 a.m.	Deltete LA 221
Introduction to the history of modern science. Emphasis on selected episodes from 19th and 20th century biology, psychology, and physics. Topics include evolution, genetics, and DNA; psychoanalysis and be-		

Course/Section	Description/Credit Session/Time	Instructor Building/Room
haviorism; relativity and quantum mechanics. Background in biological or physical sciences desirable, but not required.		
Hs 492 SA 01	Leadership in History: Orient and West (5) July 15, 17, 22, 24, 29, 31, August 5, 7, 3:30-5:30 p.m. plus Saturday and Sunday day-long seminars July 26/27 and August 2/3.	Mann Arr
An examination in a historical setting, in its perception of itself, others and the norms and sources of leadership. Permission of Instructor required.		

Institute for Theological Studies

GRADUATE COURSES (ITS courses formerly CORPUS)

ITS 506 01	Christian Ethics (3) June 16-July 17, TTh, 9:00-11:50 a.m.	Hanley LA 307
A study of the dynamics of moral development, and principles of Christian moral action; the development of a methodology for addressing personal and social moral issues. Permission of Director.		
ITS 526 01	Prayer and Contemporary Spirituality (2) June 23-July 17, MTWTh, 2:00-3:15 p.m.	Sundborg LA 307
An overview of contemporary schools of spirituality and their expression in various forms of prayer; the expression of the students' relationship with God in personal and small group prayer. Permission of Director.		
ITS 591 SA 01	Sacramental Theology (3) June 16-July 17, MW, 9:00-11:50 a.m.	Raschko LA 307
New Testament foundations, historical development in theology and practice; particular attention to celebrations of the faith community. Permission of Director.		
ITS 596 50	Independent Study (1-6) Arranged	Staff Arr
ITS 599 01	Graduate Project (3) Arranged	Staff Arr
SUMORE		
ITSS 502 01	Theologies of the New Testament (3) July 14-25, Daily, 9:00-11:50 a.m.	Barta LA 224
The nature of revelation and inspiration; the process of New Testament composition and the means to recover its message; historical backgrounds of the communities and theologies of the writers. Permission of Director.		
ITSS 503 01	Christian Anthropology (3) June 30-July 11, Daily, 9:00-11:50 a.m.	Ring LA 305
An exploration of the nature of the human person from a Christian perspective; the Christian views of nature, human reality, and the redemption of the global community. Permission of Director.		

CLASSES

Course/Section	Description/Credit Session/Time	Instructor Building/Room	Course/Section	Description/Credit Session/Time	Instructor Building/Room
ITSS 505 01	The Church As Community (3) July 28-August 8, Daily, 9:00-11:50 a.m.	Padovano LA 307	ITSS 554 01	Leadership and Organization (2) June 17-26, Daily, 2:00-4:30 p.m.	Wilson LA 220
Biblical, historical, and theological reflection on the meaning of the Church and its mission. Permission of Director.			Deals with leadership styles, various approaches to dealing with people, organizational functioning, and team building. Majors only.		
ITSS 507 01	Sacramental Theology (3) June 17-27, Daily, 9:00-11:50 a.m.	Hart Ba 102	ITSS 556 01 ITSS 556 02 ITSS 556 03 ITSS 556 04 ITSS 556 05	Pastoral Counseling (3) July 14-25, Daily, 8:30-11:50 a.m.	Team-taught Bellarmine Study Room
New Testament foundations, historical development in theology and practice; particular attention to contemporary theological reflection and pastoral questions. Permission of Director.			A course integrating basic helping skills with theological foundations for counseling ministry. Structured in two parts: lecture and lab practicum. Majors only.		
ITSS 510 01	Christian Self-Image (3) June 17-27, Daily, 9:00-11:50 a.m.	Francoeur LA 224	ITSS 572 01	Old Testament Seminar (2) July 28-August 8, Daily, 9:30-11:30 a.m.	Shaver LA 224
An analysis of the development and ongoing clarification of our self-image as it is dynamically influenced by conscience, the presence of God, and Christian community. Permission of Director.			Investigation of the Pentateuch as an example of Old Testament literature, and raising concerns for Christian ministry. We will emphasize method (how does one read this text?), content (what does it say?), and meaning (what did it and what does it mean?). Permission of Director.		
ITSS 511 01	History of Christian Spirituality (3) June 30-July 11, Daily, 9:00-11:50 a.m.	McIntyre Ba 401	ITSS 580 01	Completion Project (3) Arranged	Staff Arr
An overview of Christian spirituality from New Testament through modern times, this course will trace the ongoing development of the Christian concept of holiness by examining the lives and times of classic spiritual writers. Permission of Director.			ITSS 587 01	Practicum I (2) July 14-24, MTWTh, 2:00-4:00 p.m.	Staff LA 305
ITSS 527 01	Dimensions of Social Change (3) June 30-July 11, Daily, 9:00-11:50 a.m.	Mills/Shea P 306	This practicum helps those involved in various ministries to determine areas for personal growth. A holistic-growth plan is introduced and used as the basis for a growth-covenant.		
Examines change in organizations in society. First week focuses on coping with change and on American social trends. Second week: a) the international inter-relationships between actors and problems, and b) a framework for organizing issues and grounding evaluations about events, domestic and global. Permission of Director.			ITSS 588 50	Practicum II (2-4) June 30-July 10, MTWTh, 2:00-4:00 p.m.	Staff LA 305
ITSS 530 01	Theology and Catechesis (3) June 30-July 11, Daily, 9:00-11:50 a.m.	Hill LA 224	Focus is on professionals within the Church. It will involve a process to help formulate professional goals which, with the aid of a local mentor, will enhance the performance of ministry.		
Developing a perspective toward both theology and catechesis to assist religious educators, to bridge these disciplines. Permission of Director.			ITSS 589 50	Practicum III (2-4) Arranged	Staff Arr
ITSS 552 01	Interpersonal Process (2) June 17-26, Daily, 2:00-4:30 p.m.	Ferder/Heagle LA 305	ITSS 591 SA 01	Economic Justice (1) July 28-31, MTWTh, 2:00-4:30 p.m.	Henriot LA 307
Introduction to awareness of self and others, development of listening skills, examining barriers to communication, of feedback and empathetic response, developing basics for community support system. Majors only.			An analysis of the U.S. Bishops' Economic Pastoral Letter will evaluate its content and its consequences. Special attention will be paid to the task of educating people to the vision of economic justice presented by the Pastoral. Permission of Director.		
ITSS 553 01	Conflict Resolution (2) June 17-26, Daily, 2:00-4:30 p.m.	Rochelle-Stephens LA 224	ITSS 591 SB 01	Creative Arts in Ministry (1) July 28-31, MTWTh, 2:00-4:30 p.m.	Kovats LA 305
Become more effective in negotiating large and small daily conflicts in your professional and personal life. Includes theory input, sharing, and skill-building and awareness exercises. Majors only.			Creativity through movement; arts and ritual as dimensions of spirituality and ministry. Sessions will include poetry, music, shared reflections and experiential discoveries. Permission of Director.		

CLASSES

Course/Section	Description/Credit Session/Time	Instructor Building/Room
----------------	---------------------------------	--------------------------

ITSS 591 SC 01	Theology of Story (3) July 14-25, Daily, 9:00-11:50 a.m.	Lane LA 305
----------------	--	----------------

Introduction to the structure of Biblical narrative, the oral tradition, the role of metaphor and theological language, and the use of story in faith development. Permission of Director.

ITSS 591 SD 01	Reconciliation (2) July 28-August 8, Daily, 9:00-11:50 a.m.	Martos Ba 102
----------------	---	------------------

Conversion and conscience, sin and grace, commitment and celebration as seen in the history of penance in the Church. Examines personal and interpersonal, ecclesiastical and societal dimensions of reconciliation. Students will reflect and dialogue on the experience and value of growth through healing. Permission of Director.

ITSS 596 50	Independent Study (1-6) Arranged	Staff Arr
-------------	-------------------------------------	--------------

Mathematics

Mt 112 01	College Algebra and Trigonometry (5) 7-week, Daily, 10:30-11:40 a.m.	Mirbagheri P 455
-----------	--	---------------------

Good background for students who plan to take Mt 134, Calculus, and Analytic Geometry in the Fall. Prerequisite: Mt 101 or one-and-one-half years of high school algebra.

Mt 118 01	College Algebra for Business (5) 7-week, Daily, 10:30-11:40 a.m.	Yandl Ba 402
-----------	--	-----------------

Required in Business Program. Prerequisite: Mt 101 or equivalent.

Mt 130 01	Elements of Calculus for Business (5) 7-week, Daily, 7:50-9:00 a.m.	Yandl Ba 402
-----------	--	-----------------

Continuation of Mt 118, required in Business Program. A short course in calculus with business applications. Prerequisite: Mt 118.

Mt 135 01	Calculus and Analytic Geometry II (5) 7-week, Daily, 10:30-11:40 a.m.	Chang Ba 201
-----------	---	-----------------

Theory, technique, and applications of integration; differentiation and integration of trigonometric, exponential, and logarithmic functions. Prerequisite: Mt 134.

Mt 136 01	Calculus and Analytic Geometry III (5) 7-week, Daily, 7:50-9:00 a.m.	Mirbagheri Ba 201
-----------	--	----------------------

Indeterminate forms, improper integrals, infinite series, Taylor's Theorem, vectors, polar coordinates, solid analytic geometry. Prerequisite: Mt 135.

Mt 222 01	Discrete Structures (5) 7-week, Daily, 10:30-11:40 a.m.	Mills, J. P 456
-----------	---	--------------------

Logic, set theory, Boolean algebra, algebraic structures, graph theory and combinatorics; introduction to abstract machines and formal languages; computability concepts. Emphasis on applications to computer science. Prerequisites: Mt 135, and CSC 113 or 114.

Military Science

MS 314 01	Advanced Camp (4) Arranged	Staff NOC
-----------	-------------------------------	--------------

A six-week camp at Fort Lewis during which students develop advanced military skill and demonstrate leadership capabilities.

MS 315 01	Advanced Camp-Nursing (4) Arranged	Staff NOC
-----------	---------------------------------------	--------------

A six-week hospital practicum in which students are placed in a variety of nursing roles.

Philosophy

PI 110 01	Philosophical Problems: World (5) 7-week, Daily, 7:50-9:00 a.m.	Bjelland LA 222 Core
-----------	--	----------------------------

A combined historical and problematic approach to the nature of philosophical inquiry. An introduction to fundamental philosophical problems of being, language, logic, knowledge, reality, human existence, and God.

PI 110 02	Philosophical Problems: World (5) 7-week, Daily, 9:10-10:20 a.m.	Risser E 118 Core
-----------	--	-------------------------

PI 110 03	Philosophical Problems: World (5) 7-week, Daily, 10:30-11:40 a.m.	Dickerson P 353 Core
-----------	---	----------------------------

PI 220 01	Philosophical Problems: The Human Person (5) 7-week, Daily, 9:10-10:20 a.m.	McGinley LA 207 Core
-----------	--	----------------------------

Systematic study of the nature and powers of the human person. Special emphasis on the problems of human knowing, freedom, and responsibility.

PI 220 02	Philosophical Problems: The Human Person (5) 7-week, Daily, 10:30-11:40 a.m.	Reichmann LA 207 Core
-----------	---	-----------------------------

PI 220 03	Philosophical Problems: The Human Person (5) 7-week, Daily, 11:50 a.m.-1:00 p.m.	Burke LA 207 Core
-----------	--	-------------------------

PI 220 04	Philosophical Problems: The Human Person (5) 8-week, MW, 5:30-8:00 p.m.	Stickers LA 224 Core
-----------	--	----------------------------

PI 250 01	Ethics (5) 7-week, Daily, 7:50-9:00 a.m.	Harkins LA 224 Core Option
-----------	---	----------------------------------

A study of the general theory of moral behavior, ethics as a science. It is concerned with the goal of human life, and the human act which is the proper means to attain it. It will study the nature of conscience, and its proper formation with principles drawn from the natural law. These general principles will be applied to all aspects of life.

PI 250 02	Ethics (5) 7-week, Daily, 10:30-11:40 a.m.	Burke E 118 Core Option
-----------	--	-------------------------------

CLASSES

Course/Section	Description/Credit Session/Time	Instructor Building/Room
PI 252 01	Business Ethics (5) 8-week, TTh, 5:30-8:00 p.m.	Stickers LA 207 Core Option
Application of general ethical theory to those problems directly related to the business world: employment practices, wages, advertising, honesty, strikes. Prerequisite: PI 220.		
PI 260 01	Logic I (5) 7-week, Daily, 10:30-11:40 a.m.	Risser E 101 Core Option
Systematic treatment of traditional logic.		
PI 300 01	Philosophy of Nature (5) 7-week, Daily, 9:10-10:20 a.m.	Deltete P 456 Core Option
Philosophical discussion of recent cosmological theory, centering on the genesis, evolution, and ultimate fate of the universe. Also offered under ISC 291 SA 01.		
PI 324 01	Philosophy of Religion (5) 7-week, Daily, 10:30-11:40 a.m.	McGinley LA 202 Core Option
The major question of the course will be "Which affirmation-'God exists' or 'God does not exist' is more humanly authentic?"		
PI 491 SA 01	Philosophy in Science Fiction (5) 7-week, Daily, 9:10-10:20 a.m.	Dickerson LA 202 Core Option
Study of philosophical problems that are raised by contemporary science fiction writers. These problems will include the paradoxes of time travel, whether machines can be human, and whether aliens could accept our moral values.		

Physics

Ph 200 01	Mechanics (5) 7-week, Daily, 9:10-10:10 a.m. Laboratory: Tuesday, 1:10-4:00 p.m.	Toutonghi Ba 301 Ba 307
Physics for students of science and engineering. Prerequisite: Mt 134.		
Ph 202 01	Waves, Optics, and Thermodynamics (5) 7-week, Daily, 10:30-11:30 a.m. Laboratory: Thursday, 1:10-4:00 p.m.	Toutonghi Ba 301 Ba 306
Physics for students of science and engineering. Prerequisites: Ph 201 and Mt 134.		

Political Science

Pls 100 01	American National Government (5) 7-week, MW, 5:30-7:40 p.m.	Hogan LA 204
The structure and public policy functions of the national government, with emphasis on the Reagan Administration's impact on the American System.		
Pls 260 01	Introduction to International Politics (5) 7-week, Daily, 7:50-9:00 a.m.	Schulz LA 204
Analysis of the East/West and North/South conflicts from various national and ideological perspectives.		

Pls 291 SA 01	Women in the Third World (5) 7-week, Daily, 9:10-10:20 a.m.	Schulz LA 204
Explores the impact of economic underdevelopment and international aid efforts on family structures in Africa, Asia and Latin America.		
Pls 330 01	Soviet Union and East Europe (5) 7-week, TTh, 5:30-7:40 p.m.	Scharf LA 204
Non-ideological view of Soviet digarchic rule. Party-State relations in the context of cultural limitations and socialist goals. Social changes, economic dilemmas, ethnic conflict, law, dissent, and public welfare.		

Psychology

Psy 100 01	Introduction to Psychology (5) 7-week, Daily, 9:10-10:20 a.m.	Kunz E 101 Core
Approach, methods, and content of psychology, conceived as a human science.		
Psy 201 01	Statistics (5) 7-week, Daily, 7:50-9:00 a.m.	Staff LA 203
Basic descriptive and inferential statistics: central tendency, variability, correlation, and regression.		
Psy 315 01	Abnormal Psychology (5) 7-week, Daily, 10:30-11:40 a.m.	Halling E 114 Core
Understanding the behavior of persons labelled as having psychological problems with emphasis on the context of family. Discussion of treatment approaches and the change process.		
Psy 322 01	Psychology of Growth and Development (5) 7-week, Daily, 9:10-10:20 a.m.	Young P 353 Core
Human development over the life span. Stages of growth. Conditions necessary for maximizing the potential of the individual.		
Psy 427 01	Introduction to Counseling (5) 7-week, MW, 5:30-8:00 p.m.	Rowe LA 203 Core
Basic theory, principles and dynamics of the counselor-client relationship and the counseling process. Permission of Director.		
Psy 461 01	Theory of Group Dynamics (2) 7-week, MW, 1:10-3:50 p.m.	Rowe LA 202 Core
General overview of the theory of group process. Concurrent with Psy 462.		
Psy 462 01	Experience of Group Dynamics (3) 7-week, MW, 1:10-3:50 p.m.	Rowe LA 203 Core
Explore aspects of group process and dynamics via an experiential group. Concurrent with Psy 461.		
Psy 490 01	Symposium on Alcoholism (3) June 16-27, Daily, 9:00 a.m.-3:30 p.m.	Schnell/Roise/ Royce P 401
Special emphasis on back to basics. Alcoholism: extent, nature, causes, diagnosis, prevention, and treatment. Addiction. Also offered under Alc 400 and Ed 491 SG 01.		

CLASSES

Course/Section	Description/Credit Session/Time	Instructor Building/Room
Psy 493 SA 01	Individual and Society (5) 7-week, Daily, 11:50 a.m.-1:00 p.m.	Kunz P 455 Core
How social institutions (political, economic, etc.) are made by humans to fulfill human needs; how institutions get solidified, and how they shape humans. How this evolving relationship, in America, is being corroded by individualism; community as cure.		
Psy 493 SB 01	Explorations into the Self (5) First, Daily, 8:10-10:20 a.m.	Gerber LA 205 Core
Exploring for ourselves the questions of "Who am I?" at this point and place in our lives. We will use autobiographical writings, dreams, and literature to guide us in this process. Permission of Instructor.		
Psy 496 50	Independent Study (2-5) Arranged	Staff Arr
Psy 543 01	Basic Practicum in Therapeutic Psychology (6) 8-week, Arranged	Gerber Arr
Minimum 200 hours each of on-site supervised practicum experience in agencies providing psychological services. Majors only.		
Psy 596 50	Independent Study (1-3) Arranged	Staff Arr
Majors only.		

Public Service

Pub 349 01	Collective Bargaining (5) 8-week, MW, 5:30-8:00 p.m.	Sawyer P 353
History and statutory requirements, dynamics, and strategies of labor-management relations. Simulation of a realistic collective bargaining situation.		
Pub 495 50	Internship (2-5) Arranged	Blanchard Arr
Pub 497 50	Independent Study (1-5) Arranged	Mills, E. Arr
Pub 498 50	Independent Study (1-5) Arranged	Mills, E. Arr
Pub 511 01	Bureaucratic Organizations (3) First, TTh, 5:30-8:30 p.m.	Mills, D. P 353 Core
Structure and characteristics of bureaucratic organizations with emphasis on large public and independent sector agencies. Development of descriptive model of the behavior of such organizations; sources of dysfunction. The critical role of formal and informal rules; proofs of Parkinson's Laws and the Peter Principle. (Replaces Pub 515)		
Pub 562 01	Oral Communication for Administrators (3) 8-week, Monday, 5:30-8:30 p.m.	Staff P 455
Oral communication practicum within the context of the contemporary organization. Some theory, but the emphasis will be on performance. Differentiated assignments according to the needs and professional applications of individual students. (Replaces Pub 592)		

Pub 585 01	Management of Change (3) June 27, July 11, 25 (Fridays), 5:30-8:30 p.m. and June 28, July 12, 26 (Saturdays) 9:00 a.m.-3:00 p.m.	Mills, D. P 302
A course on the future: forecasting methods, trends, scenarios. Discussions of change processes (diffusion, revolution, attitude change) and methods of responding. Also offered under Bus 585 01.		
Pub 586 01	Thesis Preparation (1) Arranged	Mills, E. Arr
Pub 588 01	Thesis (4) Arranged	Mills, E. Arr
Pub 592 SA 01	Meta-analysis (3) 8-week, Wednesday, 5:30-8:30 p.m.	Blanchard P 455
Taken together, what can one conclude from several studies of a program or policy in an area such as education, criminal justice, or welfare, especially when results seem to conflict? Meta-analysis is concerned with resolving this kind of conflict. Students will apply meta-analysis techniques to topics of their own choosing.		
Pub 595 50	Internship (1-3) Arranged	Blanchard Arr
Pub 597 50	Independent Study (1-5) Arranged	Mills, E. Arr
Pub 598 50	Independent Study (1-5) Arranged	Mills, E. Arr

Rehabilitation

Rhb 210 01	Field Experience (5) Arranged	Thompson P 500
Actual experience in an agency or institution setting with a rehabilitation framework. Coordinating seminars are an integral part of each Field Experience course. Prerequisites: Rhb 100 and 201 or permission of Instructor. Mandatory Credit/No Credit.		
Rhb 301 01	Environmental Impact of Disability (5) July 7-August 1, Daily, Arranged	Haney Arr
The impact of mental, physical and social disabilities as related to the individual, social environment, the culture and its values, economic situations and vocational opportunities. This is part of a special 4-week program on Employment and Transition with the handicapped young adult.		
Rhb 310 01	Field Experience (5) Arranged	Thompson P 500
Mandatory Credit/No Credit.		
Rhb 402 01	Human Service Systems (5) July 7-August 1, Daily, Arranged	Karigan Arr
An analysis of various service delivery systems; methods of locating and using community-based referrals and resources; techniques in case and caseload management. This is part of a special 4-week program on Employment and Transition with the handicapped young adult.		
Rhb 410 50	Field Experience (5-20) Arranged	Thompson P 500
Mandatory Credit/No Credit.		

CLASSES

Course/Section	Description/Credit Session/Time	Instructor Building/Room
Rhb 425 01	Loss and Grief (3) First, MW, 5:00-8:00 p.m.	Haney P 551
Loss and grieving process as they relate to illness, injury, disability and dying.		
Rhb 493 SA 01	Ethics in Rehabilitation (3) 7-week, TTh, 4:00-6:00 p.m.	Thompson P 452
Situations, problems, professional judgment, and conflict of interest in rehabilitation will be presented to students to facilitate their identification and development of sound ethical service delivery practices.		
Rhb 520 01	Group Process in Rehabilitation (3) 8-week, Tuesday, 6:00-9:00 p.m.	Afanador P 455
Seminars on the rehabilitation process, techniques and selected counseling theories as applied to groups, in conjunction with one supervised Practicum experience.		
Rhb 530 01	Practicum in Rehabilitation (3) Arranged	Afanador P 500
Counseling experience. Applying the principles of rehabilitation; the student will work part-time in a rehabilitation agency. One hour of individual supervision per two-hours of practical experience.		
Rhb 531 01	Practicum in Rehabilitation (3) Arranged	Afanador P 500
Rhb 532 01	Practicum in Rehabilitation (3) Arranged	Afanador P 500
Rhb 580 50	Internship in Rehabilitation (1-6) Arranged	Thompson Arr
Full-time placement in a rehabilitation setting, integrating and applying knowledge from classroom; further development of counseling skills emphasized. Student will be supervised by faculty and agency.		

Sociology

Sc 362 01	Deviant Behavior (5) 8-week, Daily, 10:30-11:30 a.m.	Scharf, P. P 302 Core Option
An overview of social deviance through visits to courtrooms, police stations, mental hospitals, and other settings. Criminal, sexual, religious, and political forms of deviance will be discussed.		
Sc 491 SA 01	The Crisis of Suicide (5) First, Daily, 8:20-10:20 a.m.	Tolson P 455
This course will explore the concept of emotional crisis and identify processes for intervention. Techniques of assistance through a study of case histories. Also offered under CS 491 SA 01 and Ed 491 ST 01.		
Sc 491 SB 01	Extremes: A Study of Environments (5) 8-week, TTh, 5:30-8:00 p.m.	Scharf, P. LA 203
A study of environments in extreme situations. Concentration camp, prison, abusive families, submarines, space flight and police stress and war are a few of the settings to be studied.		

Course/Section	Description/Credit Session/Time	Instructor Building/Room
----------------	---------------------------------	--------------------------

Speech

Sph 200 01	Public Speaking (5) 8-week, MW, 5:30-8:00 p.m.	Sullivan LA 207
Develops the performance skills of students through the theory and practice of formal and informal oral communication.		
Sph 201 01	Interpersonal Communication (5) Second, Daily, 12:00-2:00 p.m.	Dore LA 223
Through theory and practice this course will raise the student's consciousness of, and skill in, observing and engaging in verbal and non-verbal communication.		

SUMORE

See Institute for Theological Studies

Theology and Religious Studies Undergraduate Courses

RS 200 01	Judaean-Christian Origins (5) 7-week, Daily, 10:30-11:40 a.m.	Shaver LA 204 Core Level I
Historical backgrounds and development of Israelite and Jewish religious experience and tradition; their contribution to the foundations of belief in Christ.		
RS 203 01	Prophets and Wisdom (5) 7-week, Daily, 11:50 a.m.-1:00 p.m.	Shaver LA 204 Core Level I
Analysis of the tradition's message in the Former Prophets in relation to the Torah will serve as the basis for analysis of the Latter Prophets. The course will culminate in II Isaiah's "Suffering Servant Poems" leading into the major themes of the Wisdom Literature.		
RS 211 01	The Gospel of Jesus Christ (5) 7-week, MTTh, 5:30-7:30 p.m.	Barta LA 223 Core Level I
Examination of the religious and cultural context and literary provenance of some New Testament writings in an effort to discover something of the Christian community's experience of the message and person of Jesus as guide for, and object of, present-day Christian believing.		
RS 307 01	A Theology of the Feminine (5) 7-week, Daily, 9:10-10:20 a.m.	Quitslund Ba 201
Investigation of what has been communicated to women historically about who and what they are; a look at the changing understanding of what it is to be human, generated by a rising consciousness of the equality of women; attempt to show what still needs to be said and done to improve Christian consciousness of the human and the feminine. Prerequisite: Level I.		
RS 341 01	Contemporary Issues in Christian Ethics (5) 7-week, Daily, 7:50-9:00 a.m.	Blanchette LA 202
Examination and analysis of some important issues, such as nuclear disarmament, war and peace, medical ethics, in light of the Christian tradition and contemporary viewpoints; principles for evaluating these particular issues. Prerequisite: Level I.		
RS 393 SA 01	On Church and State: History, Theory, Practice (5) 7-week, Daily, 10:30-11:40 a.m.	Davis LA 205
Notice of the rise of a problem in the history of Church-State relationships; theories guiding practice; enduring aspects of the problem. Prerequisite: Level I.		

SUMMER SCHOOL OFFERINGS

Summary 1986 — See complete course listings of ALL CLASSES, pages 14-30.

Alcohol Studies

Alc 400 01	Symposium on Alcoholism (3)	June 16-27
Alc 401 01	Pharmacology/Physiology of Alcohol Use (2)	8-week
Alc 402 01	Counseling Principles and Techniques (4)	8-week
Alc 402 02	Counseling Principles and Techniques (4)	8-week
Alc 403 01	Personal and Social Rehabilitation (2)	8-week
Alc 405 01	Law and Alcohol (2)	8-week
Alc 407 01	Field Experience I: Alcoholism (3)	Arranged
Alc 408 01	Field Experience II: Drug Abuse (3)	Arranged
Alc 410 50	Individual Research (1-3)	Arranged
Alc 411 01	Advanced Counseling (2)	8-week
Alc 412 01	Group Dynamics (2)	8-week
Alc 413 01	Alcoholism Schools Workshop (2)	June 30-July 3
Alc 418 01	Alcoholism and the Family (2)	8-week
Alc 421 50	Advanced Project or Research in Alcoholism/Drug Abuse (3-5)	Arranged
Alc 422 01	Alcoholics Anonymous as a Resource for Professionals (2)	July 7-18
Alc 491 SA01	Spirituality and Recovery (1)	June 23-27
Alc 491 SB01	Alcohol and Schools (2)	July 7-11
Alc 491 SC01	Aging and Addiction (1)	June 30-July 3
Alc 491 SD01	Anorexia and Alcoholism (2)	July 28-Aug. 1
Alc 491 SE01	Adult Children of Alcoholics (2)	8-week
Alc 491 SF01	Intervention Process (2)	8-week

Allied Health

AH 396 01	Cytotechnology Internship (0)	Arranged
AH 453 01	Applied Nuclear Medicine Technology IV (7)	Arranged
AH 459 01	Nuclear Medicine Seminar IV (2)	Arranged
AH 473 01	Clinical Orientation to Ultrasound (10)	Arranged
AH 474 01	Clinical Experience in Ultrasound (8)	Arranged
AH 483 01	Ultrasound Seminar (2)	Arranged
AH 484 01	Basic Science of Ultrasound (2)	Arranged

Biology

Bl 185 01	Biology of Human Sexuality (5)	8-week
Bl 220 01	Microbiology (5)	8-week
Bl 296 50	Independent Study (1-5)	Arranged
Bl 496 50	Independent Study (1-5)	Arranged

Business

Bus 230 01	Principles of Accounting I (Financial) (5)	8-week
Bus 231 01	Principles of Accounting II (Managerial) (5)	8-week
Bus 260 01	Business Statistics (5)	8-week
Bus 270 01	Law and Business (5)	8-week
Bus 330 01	Cost Accounting (5)	8-week
Bus 333 01	Intermediate Accounting II (5)	8-week

Bus 334 01	Intermediate Accounting III (5)	8-week
Bus 340 01	Business Finance (5)	8-week
Bus 350 01	Introduction to Marketing (5)	8-week
Bus 360 01	Production and Operation Management (5)	Second
Bus 380 01	Organization Behavior (5)	First
Bus 435 01	Auditing (5)	8-week
Bus 460 01	Computer Based Management Information Systems (5)	8-week
Bus 482 01	Business Policy and Organization (5)	8-week
Bus 496 50	Independent Study (1-5)	Arranged

Business Graduate Courses

Bus 501 01	Business Statistics (3)	8-week
Bus 502 01	Financial Accounting (3)	8-week
Bus 505 01	Legal Environment (3)	8-week
Bus 506 01	Economic Analysis (3)	8-week
Bus 507 01	Organization Behavior (3)	8-week
Bus 508 01	Production and Operations Management (3)	8-week
Bus 530 01	Managerial Accounting (3)	8-week
Bus 549 53	Research in Finance (3)	Arranged
Bus 550 01	Domestic and International Marketing (3)	8-week
Bus 552 01	Marketing Research (3)	8-week
Bus 555 01	Marketing Communications (3)	8-week
Bus 559 53	Research in Marketing (3)	Arranged
Bus 560 01	Management Information Systems (3)	8-week
Bus 562 01	Advanced Statistical Analysis (3)	8-week
Bus 569 53	Research Operations/Systems (3)	Arranged
Bus 570 01	Managerial Economics (3)	8-week
Bus 575 01	International Business Enterprise (3)	8-week
Bus 579 53	Research Environmental Area (3)	Arranged
Bus 580 01	Organizational Structure and Theory (3)	8-week
Bus 585 01	Management of Change (3)	Arranged
Bus 586 01	Entrepreneurship and Small Business Management (3)	8-week
Bus 591 SA01	Seminar in Negotiating, Mediating and Advocating (3)	Second
Bus 595 01	Business Policy (3)	8-week
Bus 596 50	Independent Study (1-3)	Arranged

Chemistry

Ch 110 01	Fundamentals of Chemistry (5)	8-week
Ch 241 01	Organic Chemistry 1 (4)	First
Ch 242 01	Organic Chemistry 2 (4)	Second
Ch 251 01	Organic Chemistry Lab 1 (2)	First
Ch 252 01	Organic Chemistry Lab 2 (2)	Second
Ch 499 50	Undergraduate Research (1-6)	Arranged

Community Services

CS 491 SA01	The Crisis of Suicide (5)	First
CS 491 SB01	Social Work with Children (5)	7-week

SUMMER SCHOOL OFFERINGS

Computer Science

CSC 113 01	Introductory Programming with BASIC (5)	8-week
CSC 113 02	Introductory Programming with BASIC (5)	8-week
CSC 114 01	Introductory Programming with FORTRAN (5)	8-week
CSC 150 01	Introduction to Computer Science (5)	8-week
CSC 170 01	Intermediate Programming with PASCAL (5)	8-week
CSC 180 01	Intermediate Programming with COBOL (5)	8-week

Criminal Justice Program

CJP 378 01	Field Experience I (5)	7-week
CJP 379 01	Field Experience II (5)	7-week
CJP 450 01	Politics of the Criminal Justice System (5)	7-week
CJP 496 50	Independent Study (1-5)	7-week

Economics

Ec 271 01	Principles of Economics-MACRO (5)	8-week
-----------	-----------------------------------	--------

Education

Ed 391 SA01	Contemporary Russia (3)	Arranged
Ed 424 01	Introduction to Learning Disabilities (3)	Adjusted First
Ed 425 01	Psychology of the Exceptional Child (3)	Adjusted Second
Ed 428 01	Language Development (3)	Adj. Second
Ed 431 01	Early Education and Child Development (3)	Adjusted Second
Ed 450 01	Gifted Education: Introduction (3)	June 30-July 11
Ed 460 01	Computers and Instructional Technology (3)	Adjusted Second
Ed 491 SA01	Peace-ing It Together (3)	June 16-20
Ed 491 SB01	Beginning Instructional Theory into Practice (3)	June 16-20
Ed 491 SC01	Peaceful Procedures (3)	June 23-27
Ed 491 SD01	The Shape of Jesus in Our Classrooms (1)	August 4-8
Ed 491 SE01	Catholic School Leadership: Christian Formation (1)	June 23-27
Ed 491 SF01	Alcohol and Schools (2)	July 7-11
Ed 491 SG01	Symposium on Alcoholism (3)	June 16-27
Ed 491 SH01	The Drug Scene (3)	June 19-July 2
Ed 491 SJ01	Word Processing for Teachers (2)	June 30-July 11
Ed 491 SK01	Teaching Science: Grades 3 through 6 (3)	June 30-July 11
Ed 491 SL01	Workshop: Techniques in Transition and Vocational Placement for Handicapped (3)	June 30-July 11
Ed 491 SM01	Introduction to Logo (2)	July 14-25
Ed 491 SN01	Data Bases for Teachers (2)	July 14-25
Ed 491 SP01	Workshop: Preparing the Handicapped for Employment (3)	July 14-25
Ed 491 SQ01	Intermediate Logo (2)	July 28-Aug. 8
Ed 491 SR01	The Literary Turtle: Logo and Teaching Writing (2)	July 28-Aug. 8
Ed 491 SS01	Early Childhood: Special Education (3)	Adjusted First
Ed 491 ST01	The Crisis of Suicide (5)	First
Ed 491 SU01	Thinking Skills in the Curriculum (3)	First

Ed 500 01	Introduction to Research/Graduate Study (3)	Adjusted First
Ed 500 02	Introduction to Research/Graduate Study (3)	Adjusted Second
Ed 501 01	Philosophy of Education (3)	Adjusted First
Ed 507 01	Principles of Educational Law (3)	Adjusted First
Ed 509 01	Developmental School Counsel (3)	Adjusted First
Ed 510 01	Fundamental Counseling Skills (3)	8-week
Ed 511 01	Counseling Theories (3)	8-week
Ed 512 01	Counseling and Informational Sources (3)	8-week
Ed 515 01	Multicultures (3)	Adj: Second
Ed 517 01	Group Counseling: Theories and Practice (3)	June 16-July 14
Ed 521 01	Adult Psychology/Learning (3)	Adj. Second
Ed 522 01	Child Psychology/Learning (3)	Adjusted First
Ed 523 01	Adolescent Psychology/Learning (3)	Adjusted Second
Ed 524 01	Seminar: Behavior Disorders (3)	Adjusted First
Ed 526 01	Reading Practicum Workshop (3)	Adjusted First
Ed 527 01	Counseling Tests and Measurements I (3)	8-week
Ed 532 01	Field Practicum in Reading (6)	Adjusted First
Ed 534 01	Seminar: Teaching Reading (3)	Adjusted First
Ed 535 01	Reading in the Content Fields (3)	Adj. Second
Ed 536 01	Supervision of Instruction (3)	Adjusted First
Ed 537 50	Curriculum Independent Study (1-4)	8-week
Ed 539 01	Curriculum Graduate Project (3)	8-week
Ed 540 01	Fundamentals of Curriculum (3)	June 20-July 14
Ed 543 01	Corrective Techniques in Teaching of Reading (3)	Adjusted Second
Ed 544 01	Seminar: Instructional Effectiveness (3)	Adjusted Second
Ed 547 01	Diagnosis and Prescription (3)	8-week
Ed 551 01	Counseling Practicum (4)	8-week
Ed 553 01	Gifted Education: Methods of Exceptionality (3)	July 14-25
Ed 555 50	Practicum: Special Education (3-6)	Arranged
Ed 557 50	Counseling Independent Study (1-3)	Arranged
Ed 560 01	Family Counseling (3)	8-week
Ed 564 01	Counseling Internship I (4)	8-week
Ed 565 01	Counseling Internship II (4)	8-week
Ed 566 01	Counseling Internship III (3)	8-week
Ed 581 01	Fundamentals of Administration (3)	Adjusted First
Ed 583 01	School Finance (3)	Adj. Second
Ed 584 01	Washington School Law (3)	Adj. Second
Ed 586 01	Administration of Professional Personnel (3)	Adjusted Second
Ed 587 01	Community Relations (3)	Adj. First
Ed 590 01	Administrative Internship I (3)	Arranged
Ed 591 01	Administrative Internship II (3)	Arranged
Ed 592 01	Administrative Internship III (3)	Arranged
Ed 594 01	School Plant and Facilities Planning (3)	Adjusted Second
Ed 596 01	Administrative Graduate Project (3)	8-week
Ed 597 50	Administrative Independent Study (1-3)	8-week
Ed 600 01	Workshop in Educational Leadership (9)	Adjusted Second
Ed 604 01	Workshop: Organizational Development and Change (3)	Adjusted First
Ed 605 50	Independent Study in Educational Leadership (1-5)	Arranged
Ed 606 01	Independent Study in Educational Leadership (1-5)	Arranged
Ed 607 01	Independent Study in Educational Leadership (1-5)	Arranged
Ed 608 01	Internship in Educational Leadership (1-9)	Arranged
Ed 613 01	Project Continuation (0)	Arranged
Ed 649 01	Doctoral Enrollment (0)	Arranged

SUMMER SCHOOL OFFERINGS

Engineering

Civil Engineering

ECL 519 01	Engineering Project (3)	Arranged
ECL 520 01	Thesis (6)	Arranged

Mechanical Engineering

EML 210 01	Statics (5)	8-week
EML 230 01	Dynamics (5)	8-week
EML 321 01	Thermodynamics (4)	8-week

Software Engineering

ESW 591 SA01	Special Topics-C/UNIX (1)	Second
--------------	---------------------------	--------

English

En 110 01	Freshman English (5)	7-week
En 132 01	American Literature (5)	7-week
En 133 01	World Literature (5)	7-week
En 175 01	Introduction to Literature (5)	7-week
En 382 01	Major American Novelists (5)	8-week
En 391 SA01	Literary Source and Stream: Influence of the Bible and the Classics (5)	7-week
En 491 SA01	Advanced Grammar and Rhetoric Review (5)	7-week
En 491 SB01	The American Transcendentalists (5)	7-week
En 492 SA01	American West in Film and Literature	8-week

Fine Arts

Art

Art 221 01	Drawing (2)	7-week
Art 334 01	Graphics (2)	7-week
Art 351 01	Sculpture (2)	7-week
Art 370 01	Arts and Crafts (5)	First
Art 491 SA01	Japanese Woodblock (2)	First
Art 491 SB01	Japanese Calligraphy (2)	Second
Art 491 SC01	Introduction to Northwest Coast Indian Carving (2)	July 21-Aug. 1

Drama

Dr 491 SA01	Video Profiles (5)	Second
-------------	--------------------	--------

Music

Mu 110 50	Piano Lessons (1-2)	7-week
Mu 111 50	Voice Lessons (1-2)	7-week
Mu 114 01	Music Fundamentals (5)	First
Mu 123 50	Classical Guitar Lessons (1-2)	7-week
Mu 125 50	Organ Lessons (1-2)	7-week
Mu 310 50	Piano Lessons (1-2)	7-week
Mu 311 50	Voice Lessons (1-2)	7-week

Foreign Languages

Fr 115 01	French I, II, III (15)	7-week
Fr 125 01		
Fr 135 01		
Sp 115 01	Spanish Language I, II, III (15)	8-week
Sp 125 01		
Sp 135 01		
Fl 191 SA01	Business Spanish (5)	8-week
Fl 391 SA01	Contemporary Russian (3)	Arranged

General Science

ISC 291 SA01	Cosmology (5)	7-week
ISC 320 01	Geology and Mineralogy of the Pacific Northwest (2)	8-week
ISC 330 01	Field Biology of the Northwest (2)	8-week

History

Hs 104 01	Western Civilization I (5)	7-week
Hs 105 01	Western Civilization II (5)	7-week
Hs 231 01	Survey of the United States (5)	7-week
Hs 281 01	Survey of Far East Since 1900 (5)	7-week
Hs 339 01	Recent United States (5)	7-week
Hs 341 01	The Pacific Northwest (5)	7-week
Hs 391 SA01	Biography As History (5)	7-week
Hs 392 SA01	History of Science (5)	7-week
Hs 492 SA01	Leadership in History: Orient and West (5)	July 15- August 3

Institute for Theological Studies

Graduate Courses (ITS formerly CORPUS)

ITS 506 01	Christian Ethics (3)	June 16-Jul. 17
ITS 526 01	Prayer and Contemporary Spirituality (2)	June 23- July 17
ITS 591 SA01	Sacramental Theology (3)	June 16-Jul. 17
ITS 596 50	Independent Study (1-6)	Arranged
ITS 599 01	Graduate Project (3)	Arranged

SUMORE

ITSS 502 01	Theologies of the New Testament (3)	July 14-25
ITSS 503 01	Christian Anthropology (3)	June 30-Jul. 11
ITSS 505 01	The Church as Community (3)	July 28-Aug. 8
ITSS 507 01	Sacramental Theology (3)	June 17-27
ITSS 510 01	Christian Self-Image (3)	June 17-27
ITSS 511 01	History of Christian Spirituality (3)	June 30- July 11
ITSS 527 01	Dimensions of Social Change (3)	June 30-Jul. 11
ITSS 530 01	Theology and Catechesis (3)	June 30-Jul. 11
ITSS 552 01	Interpersonal Process (2)	June 17-26
ITSS 553 01	Conflict Resolution (2)	June 17-26
ITSS 554 01	Leadership and Organization (2)	June 17-26
ITSS 556 01	Pastoral Counseling (3)	July 14-25
ITSS 556 02	Pastoral Counseling (3)	July 14-25
ITSS 556 03	Pastoral Counseling (3)	July 14-25
ITSS 556 04	Pastoral Counseling (3)	July 14-25
ITSS 556 05	Pastoral Counseling (3)	July 14-25
ITSS 572 01	Old Testament Seminar (2)	July 28-Aug. 8
ITSS 580 01	Completion Project (3)	Arranged
ITSS 587 01	Practicum I (2)	July 14-24
ITSS 588 50	Practicum II (2-4)	June 30-Jul. 10
ITSS 589 50	Practicum III (2-4)	Arranged
ITSS 591 SA01	Economic Justice (1)	July 28-31

SUMMER SCHOOL OFFERINGS

ITSS 591 SB01	Creative Arts in Ministry (1)	July 28-31
ITSS 591 SC01	Theology of Story (3)	July 14-25
ITSS 591 SD01	Reconciliation (2)	July 28-Aug. 8
ITSS 596 50	Independent Study (1-6)	Arranged

Mathematics

Mt 112 01	College Algebra and Trigonometry (5)	7-week
Mt 118 01	College Algebra for Business (5)	7-week
Mt 130 01	Elements of Calculus for Business (5)	7-week
Mt 135 01	Calculus and Analytic Geometry II (5)	7-week
Mt 136 01	Calculus and Analytic Geometry III (5)	7-week
Mt 222 01	Discrete Structures (5)	7-week

Military Science

MS 314 01	Advanced Camp (4)	Arranged
MS 315 01	Advanced Camp-Nursing (4)	Arranged

Philosophy

Pl 110 01	Philosophical Problems: World (5)	7-week
Pl 110 02	Philosophical Problems: World (5)	7-week
Pl 110 03	Philosophical Problems: World (5)	7-week
Pl 220 01	Philosophical Problems: The Human Person (5)	7-week
Pl 220 02	Philosophical Problems: The Human Person (5)	7-week
Pl 220 03	Philosophical Problems: The Human Person (5)	7-week
Pl 220 04	Philosophical Problems: The Human Person (5)	8-week
Pl 250 01	Ethics (5)	7-week
Pl 250 02	Ethics (5)	7-week
Pl 252 01	Business Ethics (5)	8-week
Pl 260 01	Logic I (5)	7-week
Pl 300 01	Philosophy of Nature (5)	7-week
Pl 324 01	Philosophy of Religion (5)	7-week
Pl 491 SA01	Philosophy in Science Fiction (5)	7-week

Physics

Ph 200 01	Mechanics (5)	7-week
Ph 202 01	Waves, Optics, and Thermodynamics (5)	7-week

Political Science

Pls 100 01	American National Government (5)	7-week
Pls 260 01	Introduction to International Politics (5)	7-week
Pls 291 SA01	Women in the Third World (5)	7-week
Pls 330 01	Soviet Union and East Europe (5)	7-week

Psychology

Psy 100 01	Introduction to Psychology (5)	7-week
Psy 201 01	Statistics (5)	7-week

Psy 315 01	Abnormal Psychology (5)	7-week
Psy 322 01	Psychology of Growth and Development (5)	7-week
Psy 427 01	Introduction to Counseling (5)	7-week
Psy 461 01	Theory of Group Dynamics (2)	7-week
Psy 462 01	Experience of Group Dynamics (3)	7-week
Psy 490 01	Symposium on Alcoholism (3)	June 16-27
Psy 493 SA01	Individual and Society (5)	7-week
Psy 493 SB01	Explorations into the Self (5)	First
Psy 496 50	Independent Study (2-5)	Arranged
Psy 543 01	Basic Practicum in Therapeutic Psychology (6)	Arranged
Psy 596 50	Independent Study (1-3)	Arranged

Public Service

Pub 349 01	Collective Bargaining (5)	8-week
Pub 511 01	Bureaucratic Organizations (3)	First
Pub 562 01	Oral Communication for Administrators (3)	8-week
Pub 585 01	Management of Change (3)	Arranged
Pub 592 SA01	Meta-analysis (3)	8-week

Rehabilitation

Rhb 210 01	Field Experience (5)	Arranged
Rhb 301 01	Environmental Impact of Disability (5)	July 7-Aug 1
Rhb 310 01	Field Experience (5)	Arranged
Rhb 402 01	Human Service Systems (5)	July 7-Aug. 1
Rhb 410 50	Field Experience (5-20)	Arranged
Rhb 425 01	Loss and Grief (3)	First
Rhb 493 SA01	Ethics in Rehabilitation (3)	8-week
Rhb 520 01	Group Process in Rehabilitation (3)	8-week
Rhb 530 01	Practicum in Rehabilitation (3)	Arranged
Rhb 531 01	Practicum in Rehabilitation (3)	Arranged
Rhb 532 01	Practicum in Rehabilitation (3)	Arranged
Rhb 580 50	Internship in Rehabilitation (1-6)	Arranged

Sociology

Sc 362 01	Deviant Behavior (5)	8-week
Sc 491 SA01	The Crisis of Suicide (5)	First
Sc 491 SB01	Extremes: A Study of Environments (5)	8-week

Speech

Sph 200 01	Public Speaking (5)	8-week
Sph 201 01	Interpersonal Communication (5)	Second

SUMORE

See Institute for Theological Studies

Theology and Religious Studies

RS 200 01	Judaeo-Christian Origins (5)	7-week
RS 203 01	Prophets and Wisdom (5)	7-week
RS 211 01	The Gospel of Jesus Christ (5)	7-week
RS 307 01	A Theology of the Feminine (5)	7-week
RS 341 01	Contemporary Issues in Christian Ethics (5)	7-week
RS 393 SA01	On Church and State: History, Theory, Practice (5)	7-week

SEATTLE UNIVERSITY, SEATTLE, WASHINGTON 98122

Application for ADMISSION: regular grad ☐ regular undergrad ☐ \$15 fee

Application for READMISSION: ☐ no fee

FULL LEGAL NAME—LAST		FIRST	MIDDLE	MAIDEN
LOCAL STREET ADDRESS		LOCAL PHONE NO.		
CITY	COUNTY	STATE	ZIP	
PERMANENT HOME ADDRESS		AREA PHONE NO.		
CITY	COUNTY	STATE	ZIP	

WHEN DO YOU WISH TO ENROLL? YEAR <input type="checkbox"/> FALL (SEPT) <input type="checkbox"/> WINTER (JAN) <input type="checkbox"/> SPRING (MAR) <input type="checkbox"/> SUMMER (JUN)
SOCIAL SECURITY NUMBER:
LAST ENROLLED AT SU? QTR/YR
MAJOR WHEN LAST ENROLLED?
HAVE YOU USED ANY OTHER NAME(S)? IF YES, LIST THEM.
YOUR EDUCATIONAL OBJECTIVES AT SU? <input type="checkbox"/> FIRST BACHELOR DEGREE <input type="checkbox"/> ADDITIONAL BACHELOR DEGREE <input type="checkbox"/> MASTER DEGREE <input type="checkbox"/> DOCTORATE <input type="checkbox"/> EDUC PROVISIONAL CERTIFICATE <input type="checkbox"/> EDUC STANDARD CERTIFICATE <input type="checkbox"/> SCHOOL COUNSELING CERTIFICATE <input type="checkbox"/> SCHOOL ADMIN. CERTIFICATE <input type="checkbox"/> EDUCATIONAL SPECIALIST CERTIFICATE <input type="checkbox"/> OTHER CERTIFICATE
CULTURAL OR PROFESSIONAL ENRICHMENT COURSES <input type="checkbox"/> UNDERGRADUATE <input type="checkbox"/> GRADUATE <input type="checkbox"/> OTHER DESCRIBE

ADMISSION INFORMATION

IN WHICH SCHOOL DO YOU WISH TO ENROLL? <input type="checkbox"/> ARTS & SCIENCES <input type="checkbox"/> BUSINESS <input type="checkbox"/> EDUCATION <input type="checkbox"/> INSTITUTE OF PUBLIC SERVICE	<input type="checkbox"/> MATTEO RICCI COLLEGE <input type="checkbox"/> NURSING <input type="checkbox"/> SCIENCE & ENGINEERING <input type="checkbox"/> GRADUATE	WHAT MAJOR DESIRED?
---	--	---------------------

RESIDENCE INFORMATION

WASHINGTON RESIDENT? <input type="checkbox"/> Yes <input type="checkbox"/> No	MO. DAY YR. BIRTHDATE	BIRTHPLACE
CITIZEN OF US <input type="checkbox"/> Yes <input type="checkbox"/> No	CITIZENSHIP, IF NOT US TYPE OF VISA	

BIOGRAPHICAL INFORMATION

SEX <input type="checkbox"/> FEMALE <input type="checkbox"/> MALE	MARITAL STATUS <input type="checkbox"/> SINGLE <input type="checkbox"/> MARRIED	ETHNIC ORIGIN (OPTIONAL) <input type="checkbox"/> AMERICAN INDIAN <input type="checkbox"/> ASIAN AMERICAN	<input type="checkbox"/> BLACK AFRO AMERICAN <input type="checkbox"/> HISPANIC AMERICAN <input type="checkbox"/> WHITE AMERICAN	<input type="checkbox"/> FOREIGN NATIONAL <input type="checkbox"/> OTHER	RELIGION (OPTIONAL) <input type="checkbox"/> CATHOLIC <input type="checkbox"/> OTHER
---	---	---	---	---	--

IF YOU WERE ENROLLED AT S.U. WITHIN THE LAST YEAR: IF YOU WISH THE SAME MAJOR AND PROGRAM, AND IF YOU HAVE TAKEN NO INTERVENING COURSES AT OTHER UNIVERSITIES, CHECK BOX AT FAR RIGHT AND SKIP TO SIGNATURE. ☐ NO INTERVENING COURSE WORK

NOTE: IF THIS IS YOUR FIRST APPLICATION FOR GRADUATE DEGREE PROGRAM, DO NOT SKIP.

ARE YOU NOW ENROLLED ELSEWHERE? <input type="checkbox"/> Yes <input type="checkbox"/> No	WHAT ARE YOU STUDYING AND WHEN WILL YOU FINISH?					
LIST COLLEGIATE INSTITUTIONS, INCLUDING SEATTLE UNIVERSITY, IN ORDER OF ATTENDANCE						
INSTITUTION	CITY	STATE	DATES ATTENDED FROM TO	DEGREE	DATE RECEIVED	MAJOR
1)						
2)						
3)						
4)						
5)						

CURRENT EMPLOYER—NAME OF FIRM	JOB TITLE	BUSINESS PHONE
CURRENT EMPLOYER—BUSINESS ADDRESS	CITY STATE ZIP	DATE EMPLOYED
PREVIOUS EMPLOYERS	CITY AND STATE	DATES FROM—MO/YR TO MO/YR
		JOB TITLE

I CERTIFY THAT THE FOREGOING INFORMATION CONTAINED IN THIS APPLICATION IS TRUE AND CORRECT. I UNDERSTAND THAT MISREPRESENTATION OR OMMISSION OF INFORMATION SUCH AS FAILURE TO LIST ALL SCHOOLS, COLLEGES, OR UNIVERSITIES ATTENDED MAY RESULT IN THE DENIAL OF THIS APPLICATION OR MY SUBSEQUENT DISMISSAL FROM THE UNIVERSITY AND LOSS OF CREDIT.

DATE _____ 19____

MR ☐ MRS ☐ REV ☐
 MS ☐ SR ☐ DR ☐
 MISS ☐ BRO ☐

FULL LEGAL SIGNATURE _____

Director Summer Session
Seattle University
Seattle, WA 98122