

1985

1985 Bulletin of Information - Summer School

Seattle University

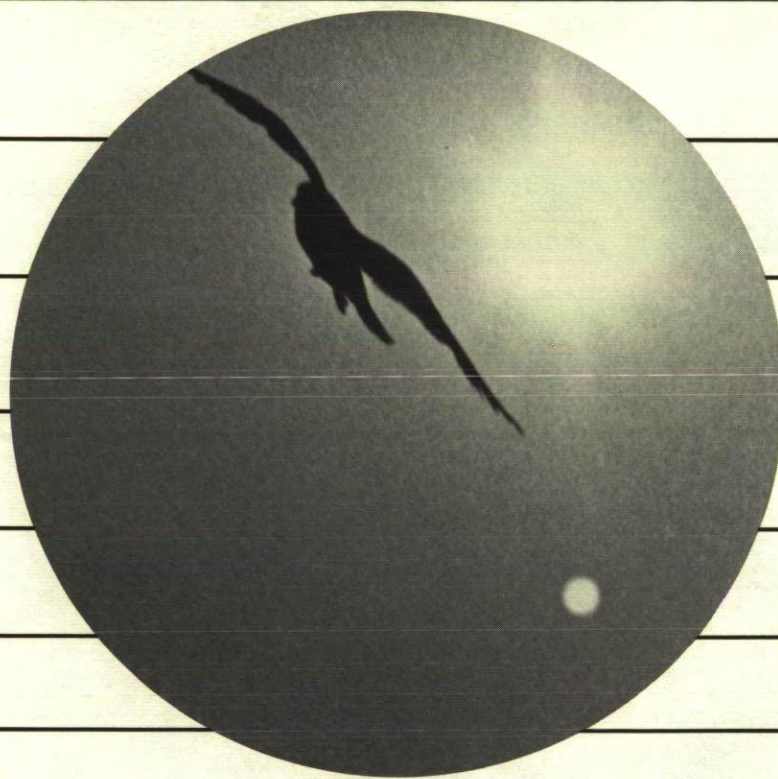
Follow this and additional works at: <http://scholarworks.seattleu.edu/bulletinofinformation>

Recommended Citation

Seattle University, "1985 Bulletin of Information - Summer School" (1985). *Bulletin of Information*. 124.
<http://scholarworks.seattleu.edu/bulletinofinformation/124>

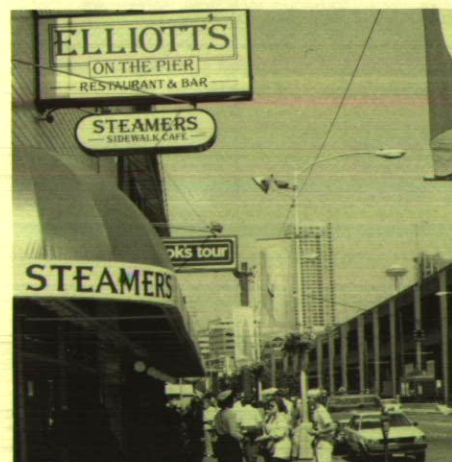
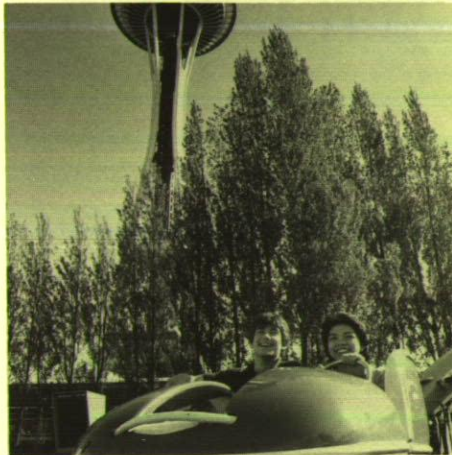
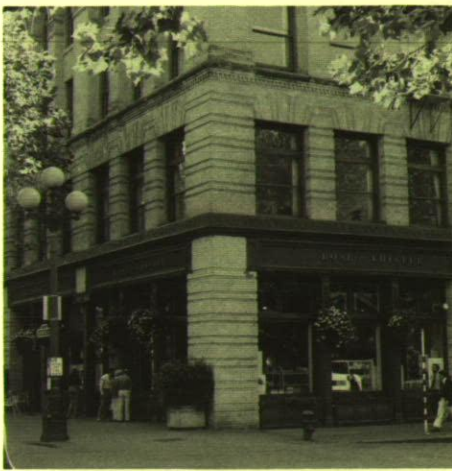
This Bulletin is brought to you for free and open access by ScholarWorks @ SeattleU. It has been accepted for inclusion in Bulletin of Information by an authorized administrator of ScholarWorks @ SeattleU.

BULLETIN OF INFORMATION



SEATTLE UNIVERSITY
SUMMER SESSION

JUNE 17 to AUGUST 9, 1985



SUMMER 1985

Director of Summer School
Joseph B. Monda, Ph.D.
Seattle University
Seattle, Washington 98122

Where to Call for Detailed Information

Admissions Office	626-5720
Alumni Office	626-5656
Arts and Sciences, College of	626-5986
Bellarmino Hall	626-6858
Business, Albers School of	626-5456
Campion Tower	626-5638
Campus Ministry	626-5900
Continuing Education	626-6626
Controller's Office	626-5747
Counseling Center	626-5846
Education, School of	626-5416
Financial Aid Office	626-5462
General Studies	626-5387
Graduate School	626-6320
Housing (Resident Student Services)	626-5920
International Student Adviser	626-5388
Library	626-6859
Minority Affairs Office	626-6226
Nursing, Office of	626-6380
Registrar's Office	626-5700
Science and Engineering, School of	626-6250
Students, Dean for	626-6782
Summer School Director	626-5361
SUMORE Office	626-5318

For Information

ADMISSIONS
(206) 626-5720

REGISTRAR
(206) 626-5700

SCHOOL OF EDUCATION
(206) 626-5416

Volume 16, No. 4
Summer 1985

Seattle University
Bulletin of Information USPS 487-740
Published Quarterly by Seattle University
Seattle, Washington 98122
Second class postage paid at Seattle, Washington

POSTMASTER: Send address changes to Summer School Director,
Seattle University, Seattle, WA 98122

An Equal Opportunity Employer

Editor/Jean Merlino

Information concerning graduate and undergraduate programs may be
obtained in supplementary bulletins.



Academic Calendar—Summer School 1985

Advance Registration	April 22-26
Evening hours to 7:00 p.m.	April 23
Advance Registration Closed	April 27-June 13
Registration Days	
Full Sessions and First Term	June 14 and 17
Evening hours to 7:00 p.m.	June 17
Second Term	July 15, 16
Other Short Term Courses and Workshops	First 2 days of class
Classes Begin	June 17
Late Registration	
Full Sessions and First Term	June 18-21
Add/Drop/Change	June 14-21
Independence Day—No Classes	July 4
Last Day to Withdraw, First Term	July 5
Close of First Term	July 12
Registration, Second Term	July 15, 16
Last Day to Withdraw, Second Term and Full Sessions	July 26
Final Examinations	
First Term	July 12
Seven-Week Full Session	August 1, 2
Eight-Week Full Session and Second Term	August 8, 9

Summer School 1985

7-Week Session	June 17-August 2
8-Week Session	June 17-August 9
First 4-Week Term	June 17-July 12
Second 4-Week Term	July 15-August 9

SEATTLE UNIVERSITY

Seattle University is an independent, coeducational institution, operated under the auspices of the Jesuit Order, with a faculty and staff which includes Jesuits as well as lay people of various faiths.

The University is composed of eight major academic units with 44 undergraduate and 12 graduate programs of study: the College of Arts and Sciences, Albers School of Business, School of Education, School of Science and Engineering, School of Nursing, Matteo Ricci College II, Graduate School, and the Institute of Public Service.

Seattle University is accredited by the Northwest Association of Schools and Colleges, National League for Nursing, American Chemical Society, Council on Rehabilitation Education, Council on Allied Health Education and Accreditation, Accreditation Board for Engineering and Technology, National Council for Accreditation of Teacher Education, and the American Association of Collegiate Schools of Business. It is also a member of the Independent Colleges of Washington.

The University's teacher training programs are approved by the State of Washington and qualify its students for teaching certificates and principals' credentials issued by the State Department of Public Instruction. The School of Education, approved by the Washington State Board of Education, offers programs leading to the Bachelor of Arts of Education and the Bachelor of Education degrees and graduate and fifth-year programs.

The Graduate School includes Master's programs in business administration, education, psychology, public administration, rehabilitation, religious education and ministry, software engineering, and transportation engineering. It also includes a Doctoral program in Education.

SUMMER SCHOOL OFFERINGS

Summary 1985

Alcohol Studies

Alc 400 01	Symposium on Alcoholism (3)	June 24-July 5
Alc 401 01	Pharmacology/Physiology of Alcohol Use (2)	8-week
Alc 402 01	Counseling Principles and Techniques (4)	8-week
Alc 402 02	Counseling Principles and Techniques (4)	8-week
Alc 402 03	Counseling Principles and Techniques (4)	8-week
Alc 403 01	Personal and Social Rehabilitation (2)	8-week
Alc 404 01	Agency Administration (2)	8-week
Alc 405 01	Law and Alcohol (2)	8-week
Alc 406 01	Cross-Cultural Counseling (2)	8-week
Alc 407 01	Field Experience I: Alcoholism (3)	8-week
Alc 408 01	Field Experience II: Drug Abuse (3)	8-week
Alc 409 SA01	Alcoholism and Domestic Violence (2)	8-week
Alc 409 SB01	Anorexia and Alcoholism (2)	July 15-19
Alc 409 SC01	Treatment of Adolescents (4)	8-week
Alc 410 50	Individual Research (1-3)	8-week
Alc 413 01	Alcoholism Schools Workshop (2)	July 8-12
Alc 414 01	Interview and Diagnosis in Treatment (2)	8-week
Alc 416 01	Alcohol and Youth (2)	August 5-9
Alc 421 50	Advanced Project or Research in Alcoholism/Drug Abuse (3-5)	8-week
Alc 422 01	Alcoholics Anonymous as a Resource for Professionals (2)	July 8-19

Allied Health

AH 396 01	Cytotechnology Internship (0)	Arranged
AH 453 01	Applied Nuclear Medicine Technology IV (7)	Arranged
AH 459 01	Nuclear Medicine Seminar IV (2)	Arranged
AH 463 01	National Certifying Examination (7)	Arranged
AH 464 01	Radiation Therapy Seminar (1)	Arranged
AH 473 01	Clinical Orientation to Ultrasound (10)	Arranged
AH 474 01	Clinical Experience in Ultrasound (8)	Arranged
AH 483 01	Ultrasound Seminar (2)	Arranged
AH 484 01	Basic Science of Ultrasound (2)	Arranged

Biology

Bl 185 01	Biology of Human Sexuality (5)	First
Bl 220 01	Microbiology (5)	8-week
Bl 296 50	Independent Study (1-5)	Arranged
Bl 496 50	Independent Study (1-5)	Arranged

Business

Bus 230 01	Principles of Accounting I (5)	First
Bus 231 01	Principles of Accounting II (5)	Second
Bus 260 01	Business Statistics (5)	8-week
Bus 270 01	Law and Business (5)	8-week
Bus 330 01	Cost Accounting (5)	8-week
Bus 333 01	Intermediate Accounting II (5)	8-week
Bus 334 01	Intermediate Accounting III (5)	8-week
Bus 340 01	Business Finance (5)	8-week
Bus 350 01	Introduction to Marketing (5)	8-week
Bus 351 01	Consumer Behavior (5)	8-week
Bus 360 01	Production and Operation Management (5)	8-week
Bus 380 01	Organization Behavior (5)	8-week
Bus 435 01	Auditing (5)	8-week
Bus 460 01	Computer Based Management Information Systems (5)	8-week
Bus 482 01	Business Policy and Organization (5)	8-week
Bus 496 50	Independent Study (1-5)	Arranged

Business Graduate Courses

Bus 501 01	Business Statistics (3)	8-week
Bus 502 01	Financial Accounting (3)	8-week
Bus 504 01	Marketing Processes (3)	8-week
Bus 506 01	Economic Analysis (3)	8-week
Bus 507 01	Organization Behavior (3)	8-week
Bus 530 01	Managerial Accounting (3)	8-week
Bus 539 53	Research in Accounting (3)	Arranged
Bus 549 53	Research in Finance (3)	Arranged
Bus 550 01	Domestic and International Marketing (3)	8-week
Bus 552 01	Marketing Research (3)	8-week
Bus 559 53	Research in Marketing (3)	Arranged
Bus 560 01	Management Information Systems (3)	8-week
Bus 562 01	Advanced Statistical Analysis (3)	8-week
Bus 569 53	Research-Operations and Systems (3)	Arranged
Bus 570 01	Managerial Economics (3)	8-week
Bus 579 53	Research-Environmental Area (3)	Arranged
Bus 580 01	Organization Structure and Theory (3)	8-week
Bus 582 01	Decision Theory (3)	8-week
Bus 585 01	Management of Change (3)	8-week
Bus 586 01	Entrepreneurship and Small Business Management (3)	8-week
Bus 589 53	Research-Behavioral Area (3)	Arranged
Bus 591 SA01	Forecasting Business Conditions (3)	8-week
Bus 591 SB01	Seminar in Negotiating, Mediating and Advocating (3)	Second
Bus 591 SC01	The Executive Mind (3)	First
Bus 595 01	Business Policy (3)	8-week
Bus 596 50	Independent Study (1-3)	Arranged

Chemistry

Ch 123 01	General Chemistry 3 (4)	First
Ch 133 01	General Chemistry Lab 3 (1)	First
Ch 241 01	Organic Chemistry 1 (4)	First
Ch 242 01	Organic Chemistry 2 (4)	Second
Ch 251 01	Organic Chemistry Lab 1 (2)	First
Ch 252 01	Organic Chemistry Lab 2 (2)	Second
Ch 499 50	Undergraduate Research (1-6)	Arranged

Community Services

CS 310 01	Social Work with Families (5)	7-week
CS 491 SA01	The Crisis of Suicide (5)	First

Computer Science

CSC 113 01	Introductory Programming with BASIC (5)	8-week
CSC 113 02	Introductory Programming with BASIC (5)	8-week
CSC 114 01	Introductory Programming with FORTRAN (5)	8-week
CSC 150 01	Introduction to Computer Science (5)	8-week
CSC 170 01	Intermediate Programming with PASCAL (5)	8-week
CSC 180 01	Intermediate Programming with COBOL (5)	8-week

Criminal Justice Program

CJP 378 01	Field Experience I (5)	Arranged
CJP 379 01	Field Experience II (5)	Arranged
CJP 450 01	Political/Criminal Justice System (5)	7-week
CJP 496 55	Independent Study (1-5)	Arranged
CJP 497 55	Individual Research (1-5)	Arranged

SUMMER SCHOOL OFFERINGS

Economics

Ec 271 01 Principles of Economics-MACRO (5) 8-week

Education

Ed 424 01 Introduction to Learning Disabilities (3) First
 Ed 425 01 Psychology of the Exceptional Child (3) Second
 Ed 428 01 Language Development (3) Second
 Ed 450 01 Gifted Education: Introduction (3) July 1-12
 Ed 451 01 Gifted Education Workshop I (3) July 1-12
 Ed 491 SA01 Peaceful Procedures (3) June 17-21
 Ed 491 SB01 Beginning Instructional Theory into Practice (3) June 17-21
 Ed 491 SC01 The Cosmic Creation Story (3) June 24-28
 Ed 491 SD01 Montessori for Teachers/Aides (3) June 17-28
 Ed 491 SE01 The Drug Scene (3) June 17-28
 Ed 491 SF01 Computers in Library/Media Center (2) July 15-26
 Ed 491 SG01 Word Processing for Teachers (2) July 15-26
 Ed 491 SH01 Teaching and Learning Logo (2) First
 Ed 491 SJ01 Computers and Instructional Technology (3) First
 Ed 491 SK01 Advanced Grammar and Rhetoric Review (5) 7-week
 Ed 491 SL01 Symposium on Alcoholism (3) June 24-July 5
 Ed 491 SM01 Global/International Education (3) First
 Ed 500 01 Introduction to Research/Graduate Study (3) First
 Ed 500 02 Introduction to Research/Graduate Study (3) Second
 Ed 501 01 Philosophy of Education (3) First
 Ed 505 01 Fundamentals of Research Design (3) First
 Ed 507 01 Principles of Educational Law (3) First
 Ed 508 01 School Superintendent: Politics and Policy (3) June 17-21
 Ed 510 01 Fundamental Counseling Skills (3) 8-week
 Ed 511 01 Counseling Theories (3) First
 Ed 512 01 Informational Services in Counseling (3) 8-week
 Ed 517 01 Group Counseling Theory and Practice (3) 8-week
 Ed 521 01 Adult Psychology/Learning (3) Second
 Ed 522 01 Child Psychology/Learning (3) First
 Ed 523 01 Adolescent Psychology/Learning (3) Second
 Ed 524 01 Seminar: Behavior Disorders (3) First
 Ed 526 01 Reading Practicum Workshop (3) First
 Ed 527 01 Counseling Tests and Measurements I (3) 8-week
 Ed 530 01 Practicum: Curriculum Design (3) Arranged
 Ed 531 01 Individualized Reading Instruction (3) July 15-26
 Ed 532 01 Field Practicum in Reading (6) First
 Ed 534 01 Seminar: Teaching Reading (3) First
 Ed 535 01 Reading in the Content Fields (3) Second
 Ed 536 01 Supervision of Instruction (3) First
 Ed 537 50 Curriculum Independent Study (1-4) Arranged
 Ed 538 50 Program Administrator Internship (3-9) Arranged
 Ed 539 01 Curriculum Graduate Project (3) Arranged
 Ed 540 01 Fundamentals of Curriculum (3) First
 Ed 543 01 Corrective Techniques in Teaching of Reading (3) Second
 Ed 544 01 Seminar: Instructional Effectiveness (3) Second
 Ed 545 01 Special Methods in Mental Retardation (3) July 15-26
 Ed 546 01 Seminar in Mental Retardation (3) July 1-12
 Ed 547 01 Diagnosis and Prescription (3) 8-week
 Ed 550 01 Gifted Education: Creativity and Productive Thinking (3) July 15-26
 Ed 551 01 Counseling Practicum (4) 8-week
 Ed 555 01 Practicum: Special Education (3) Arranged
 Ed 557 50 Counseling: Independent Study (1-3) Arranged

Ed 559 01 Counseling: Graduate Project (3) Arranged
 Ed 560 01 Family Counseling (3) 8-week
 Ed 561 SA01 Financing in Higher Education (3) First
 Ed 561 SB01 Current Issues in Higher Education (3) Second
 Ed 561 SC01 Continuing Certification for Counselors (3) First
 Ed 561 SD01 Putting Leadership Theory to Work (3) July 15-19
 Ed 564 01 Counseling Internship I (4) 8-week
 Ed 565 01 Counseling Internship II (4) 8-week
 Ed 566 01 Counseling Internship III (3) Arranged
 Ed 581 01 Fundamentals of Administration (3) Second
 Ed 583 01 School Finance (3) First
 Ed 584 01 Washington School Law (3) Second
 Ed 586 01 Administration of Professional Personnel (3) Second
 Ed 590 01 Administrative Internship I (3) Arranged
 Ed 591 01 Administrative Internship II (3) Arranged
 Ed 592 01 Administrative Internship III (3) Arranged
 Ed 593 01 School Business Administration (3) First
 Ed 596 01 Administrative Graduate Project (3) 8-week
 Ed 597 01 Administration Independent Study (3) 8-week
 Ed 600 01 Workshop in Educational Leadership (9) Second
 Ed 604 01 Workshop: Organizational Development and Change (3) First
 Ed 605 50 Independent Study in Educational Leadership (1-5) Arranged
 Ed 606 50 Independent Study in Educational Leadership (1-5) Arranged
 Ed 607 50 Independent Study in Educational Leadership (1-5) Arranged
 Ed 608 50 Internship in Educational Leadership (1-9) Arranged
 Ed 610 50 Doctoral Project in Educational Leadership (1-14) Arranged
 Ed 611 01 Project Continuation (3) Arranged
 Ed 612 01 Project Continuation (0) Arranged
 Ed 613 01 Project Continuation (0) Arranged
 Ed 649 01 Doctoral Enrollment (0) Arranged

Engineering

Civil Engineering

ECL 461 01 Transportation Systems (3) Second
 ECL 491 SA01 Cold Regions Engineering (3) First
 ECL 519 01 Engineering Project (3) Arranged
 ECL 520 50 Thesis (3-6) Arranged
 ECL 596 50 Independent Study (1-5) Arranged

Mechanical Engineering

EML 210 01 Engineering Statics (5) 8-week
 EML 230 01 Engineering Dynamics (5) 8-week

English

En 110 01 Freshman English (5) 7-week
 En 110 02 Freshman English (5) 7-week
 En 132 01 American Literature (5) 7-week
 En 133 01 World Literature (5) 7-week
 En 240 01 Introduction to Drama (5) 7-week
 En 264 01 Great English Authors I (5) 8-week
 En 307 01 Advanced Writing Skills (5) 7-week
 En 391 SA01 Faces of Caliban: The Wild Man in Literature (5) 7-week
 En 392 SA01 Great Northwest Fiction (5) 7-week
 En 488 01 Film and Literature (5) 8-week
 En 491 SA01 Advanced Grammar and Rhetoric Review (5) 7-week

SUMMER SCHOOL OFFERINGS

Fine Arts

Art

Art 221 01	Drawing (2)	7-week
Art 334 01	Graphics (2)	7-week
Art 346 01	Painting (2)	First
Art 351 01	Sculpture (2)	7-week
Art 370 01	Arts and Crafts (5)	First
Art 491 SA01	Japanese Woodblock (2)	First
Art 491 SB01	Japanese Calligraphy (2)	Second

Drama

Dr 291 SA01	Jazz/Aerobics (2)	First
Dr 291 SB01	Modern Dance I (3)	First
Dr 291 SC01	Modern Dance II (3)	First
Dr 291 SD01	Rhythmic Dance Exercise (2)	First
Dr 400 50	Ensemble (1-5)	Second
Dr 491 SA01	Video Profiles (5)	Second

Music

Mu 110 50	Piano Lessons (1-2)	7-week
Mu 111 50	Voice Lessons (1-2)	7-week
Mu 114 01	Music Fundamentals (5)	First
Mu 123 50	Classical Guitar Lessons (1-2)	7-week
Mu 125 50	Organ Lessons (1-2)	7-week
Mu 310 50	Piano Lessons (1-2)	7-week
Mu 311 50	Voice Lessons (1-2)	7-week

Foreign Languages

Fl 191 SA01	Introduction to Russian I, II (10)	7-week
Fl 192 SA01		
Fr 115 01	French I, II, III (15)	7-week
Fr 125 01		
Fr 135 01		
Sp 115 01	Spanish I, II, III (15)	7-week
Sp 125 01		
Sp 135 01		

General Science

ISC 291 SA01	Introduction to Mineralogy (5)	8-week
ISC 291 SB01	Philosophy of Nature (5)	8-week

History

Hs 100 01	Origins of the Modern World (5)	7-week
Hs 104 01	Western Civilization I (5)	7-week
Hs 105 01	Western Civilization II (5)	7-week
Hs 231 01	Survey of the United States (5)	7-week
Hs 281 01	Survey of Far East Since 1900 (5)	7-week
Hs 341 01	The Pacific Northwest (5)	7-week
Hs 339 01	Recent United States (5)	7-week
Hs 391 SA01	Food and Western Civilization (5)	7-week
Hs 492 SA01	Leadership in History: Orient and West (5)	7-week

Journalism

Jr 498 50	Independent Study (1-5)	Arranged
-----------	-------------------------	----------

Mathematics

Mt 112 01	College Algebra and Trigonometry (5)	7-week
Mt 118 01	College Algebra for Business (5)	7-week
Mt 130 01	Elements of Calculus for Business (5)	7-week

Mt 135 01	Calculus and Analytic Geometry II (5)	7-week
Mt 136 01	Calculus and Analytic Geometry III (5)	7-week
Mt 200 01	Theory of Arithmetic (5)	7-week
Mt 222 01	Discrete Structures (5)	7-week
Mt 232 01	Multivariable Calculus (3)	7-week
Mt 233 01	Linear Algebra (3)	7-week

Military Science

MS 215 01	Basic Course Equivalent I (0)	Arranged
MS 216 01	Basic Course Equivalent II (6)	8-week
MS 314 01	Advanced Camp (4)	Arranged
MS 315 01	Advanced Camp-Nursing (4)	Arranged

Nursing

N 393 SA 01	Planned Change for Health Professionals (3)	8-week
N 493 SA 01	Leadership Skills for Health Professionals (3)	8-week

Philosophy

Pl 110 01	Philosophical Problems: World (5)	7-week
Pl 110 02	Philosophical Problems: World (5)	7-week
Pl 110 03	Philosophical Problems: World (5)	8-week
Pl 220 01	Philosophical Problems: The Human Person (5)	7-week
Pl 220 02	Philosophical Problems: The Human Person (5)	7-week
Pl 220 03	Philosophical Problems: The Human Person (5)	7-week
Pl 220 04	Philosophical Problems: The Human Person (5)	8-week
Pl 250 01	Ethics (5)	7-week
Pl 250 02	Ethics (5)	7-week
Pl 252 01	Business Ethics (5)	8-week
Pl 260 01	Logic I (5)	7-week
Pl 300 01	Philosophy of Nature (5)	8-week
Pl 391 SA01	Philosophy of Atheism (5)	7-week
Pl 491 SA01	Loneragan: Method in Philosophy and Theology (5)	7-week

Physics

Ph 110 01	Introduction to Astronomy (5)	7-week
Ph 200 01	Mechanics (5)	8-week
Ph 204 01	Relativity (2)	8-week
Ph 205 01	Introduction to Quantum Physics (3)	8-week

Political Science

Pls 210 01	Introduction to Local and State Politics (5)	7-week
Pls 291 SA01	The Politics of Central America and Mexico (5)	7-week
Pls 365 01	U.S. Foreign Policy (5)	7-week
Pls 491 SA01	Human Rights and Repression in World Politics (5)	7-week

Psychology

Psy 100 01	Introduction to Psychology (5)	7-week
Psy 201 01	Statistics (5)	7-week
Psy 293 SA01	The Self at Mid-Life (5)	First
Psy 315 01	Abnormal Psychology (5)	7-week
Psy 322 01	Psychology of Growth and Development (5)	7-week
Psy 461 01	Theory of Group Dynamics (2)	7-week
Psy 462 01	Experience of Group Dynamics (3)	7-week
Psy 490 01	Symposium on Alcoholism (3)	June 24-July 5
Psy 493 SA01	Explorations into the Self (5)	First
Psy 496 50	Independent Study (2-5)	Arranged

SUMMER SCHOOL OFFERINGS

Public Service

Pub 349 01	Collective Bargaining (5)	8-week
Pub 494 01	Lifework Planning (1)	July 19, 20
Pub 542 01	Public Personnel Management (3)	8-week
Pub 585 01	Management of Change (3)	8-week
Pub 592		
SA 01	Oral Communications for Administrators (3)	8-week
Pub 592		
SA 02	Social Equity and Public Policy (3)	8-week

Rehabilitation

Rhb 210 01	Field Experience (5)	8-week
Rhb 310 01	Field Experience (5)	8-week
Rhb 410 50	Field Experience (5-15)	8-week
Rhb 425 01	Loss and Grief (5)	First
Rhb 492 SA01	Private Sector Testing (3)	8-week
Rhb 493 SA01	Ethics in Rehabilitation (3)	7-week
Rhb 520 01	Group Process in Rehabilitation (3)	8-week
Rhb 530 01	Practicum/Rehabilitation (3)	Arranged
Rhb 531 01	Practicum/Rehabilitation (3)	Arranged
Rhb 532 01	Practicum/Rehabilitation (3)	Arranged
Rhb 580 50	Internship in Rehabilitation (1-6)	Arranged

Sociology

Sc 291 SA01	Rehabilitating Offenders (5)	8-week
Sc 362 01	Deviant Behavior (5)	8-week

Speech

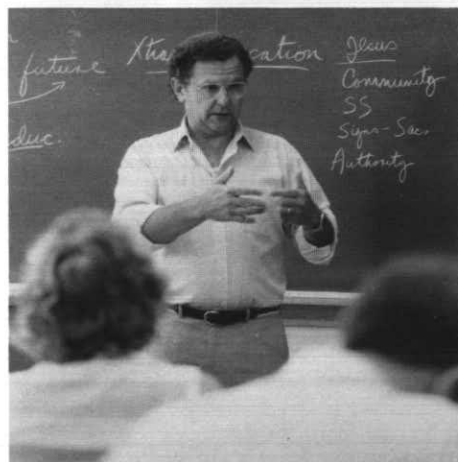
Sph 200 01	Public Speaking (5)	8-week
Sph 201 01	Interpersonal Communication (5)	Second

SUMORE—Graduate Classes

RS 501 01	Theologies of the New Testament (3)	July 1-12
RS 503 01	Christology (3)	June 18-28
RS 504 01	The Church As Community (3)	July 29-Aug. 9
RS 509 01	Moral Theology (3)	July 15-26
RS 512 01	Liturgy (2)	July 1-11
RS 520 01	Spiritual Direction (2)	July 15-25
RS 523 01	Christian Anthropology (3)	July 15-26
RS 528 01	Christian Self-Image (3)	June 18-28
RS 537 01	History of Christian Social Thought (3)	July 1-12
RS 543 01	Principles and Practices of Social Justice Ministry (2)	July 15-26
RS 547 01	Interpersonal Process (2)	June 18-28
RS 548 01	Conflict Resolution (2)	June 18-28
RS 549 01	Leadership and Organization (2)	June 18-28
RS 550 01	Theories of Religious Education (2)	July 1-12
RS 566 01	Pastoral Counseling (3)	July 1-12
RS 566 02		
RS 566 03		
RS 566 04		
RS 580 01	Graduate Project (3)	Arranged
RS 587 01	Practicum I (2)	July 15-26
RS 588 50	Practicum II (2-4)	July 15-26
RS 589 50	Practicum III (2-4)	Arranged
RS 590 SA01	Spirituality (2)	July 29-Aug. 9
RS 590 SB01	New Testament Seminar (2)	July 1-11
RS 590 SC01	Recovering History (1)	July 29-Aug. 1
RS 595 50	Independent Study (1-6)	Arranged

Theology/Religious Studies

RS 200 01	Judaean Christian Origins (5)	7-week
RS 243 01	The Christian in Action (5)	8-week
RS 291 SA01	Religious Experience in Story and Autobiography (5)	7-week
RS 303 01	A Theology of the Human (5)	7-week
RS 338 01	Christian Views of Love, Sexuality, and Marriage (5)	7-week
RS 391 SA01	The Commandment of Love: Scripture and Theology (5)	7-week



OF SPECIAL INTEREST

ALCOHOL STUDIES

Short Courses

Symposium on Alcoholism

Alc 400 01, 3 credits, June 24-July 5

The annual symposium on alcoholism will feature special emphasis on *coping with alcoholism problems in educational systems*. Guest lecturers will discuss the special roles that can be played by teachers, counselors, nurses, and administrators in confronting alcohol/drug problems within school systems and in taking effective, positive action. Also offered under Ed 491 SL01 and Psy 490 01.

Anorexia and Alcoholism

Alc 409 SB01, 2 credits, July 15-19

This course will explore the nature of eating disorders (anorexia nervosa and bulimia), and possible parallels with alcoholism. Persons with eating disorders often have special difficulties when they need alcoholism and drug-abuse treatment.

Alcoholism and Youth

Alc 416 01, 2 credits, August 5-9

Along with Alc 400, this course will focus on alcohol and drug problems in adolescents. The roles of educational professionals will be stressed. Topics will include polydrug abuse, driving issues, family and legal problems, as well as problems with the school system.

Eight-Week Courses

Cross-Cultural Counseling

Alc 406 01, 2 credits, 8-week

Developing sensitivity for cultural differences as they relate to counseling for recovery from alcohol and drug abuse. Special problems and techniques. Special guest lectures represent various minority groups.

Alcoholism and Domestic Violence

Alc 409 SA01, 2 credits, 8-week

An exploration of the connections between abuse of chemicals and abusive behavior toward people. Child and spouse abuse, along with abuse of the elderly, will be discussed. Legal ramifications, as well as intervention and treatment strategies, will also be covered.

COMMUNITY SERVICES

Social Work with Families (5)

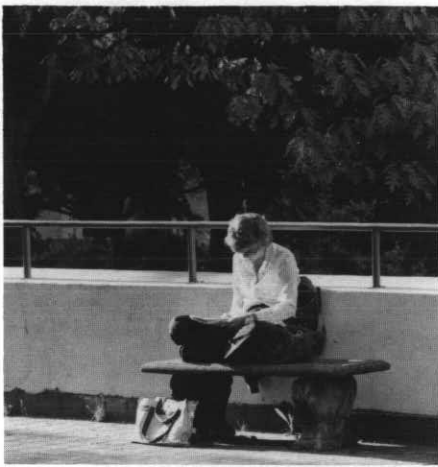
CS 310 01, 5 credits, 7-week

An introduction to the major systems of family therapy with emphasis on applying theoretical approaches to the wide range of personal, interactional, and societal problems which hamper family functioning.

The Crisis of Suicide

CS 491 SA01, 5 credits, First Term

For a startlingly high number of Americans, especially young people, suicide appears to be a solution to problems they perceive as insurmountable. Counselors, educators, mental health and law enforcement personnel are faced with the two-pronged problem of identifying and responding to individuals in crisis, and providing support services for the family, friends, and other survivors of suicide victims. A study of case histories will present specific techniques of assistance.



OF SPECIAL INTEREST

EDUCATION

Gifted Education: Introduction
Ed 450 01, 3 credits, July 1-12

An introduction to gifted education including areas of giftedness, identification, curriculum modes, program organization, parent involvement, attitudes concerning giftedness, evaluation of student performance.

Gifted Education: Workshop I
Ed 451 01, 3 credits, July 1-12

Current issues in gifted education including identification procedures, right brain/left brain research, evaluation of the gifted student and a sharing forum on giftedness. Prerequisite: Ed 450.

Gifted Education: Creativity and Productive Thinking
Ed 550 01, 3 credits, July 15-26

Identification and assessment of creative abilities and productive thinking skills; instructional designs, teaching methods for creative and productive outcomes; questioning strategies, futurism and gifted students. Prerequisite: Ed 450, or permission of Instructor.

Current Issues in Higher Education
Ed 561 SB01, 3 credits, Second Term

An examination of the major issues facing higher education today. Taught by H.R. Kells, Professor of Higher Education at Rutgers University and an expert in the area of institutional self-study.

Putting Leadership Theory to Work
Ed 561 SD01, 3 credits, July 15-19

Taught by Dr. Thomas Sergiovanni, Lillian Radford Professor of Education at Trinity University. Contact School of Education for further details.

ENGLISH

Faces of Caliban: The Wild Man in Literature
En 391 SA01, 5 credits, 7-week

Civilizations have always been fascinated by the wild man, a symbol of our other self. First appearing in the Sumerian epic *Gilgamesh*, the wild man has made his appearance in such diverse works as "Sir Gawain and the Green Knight," Shakespeare's *The Tempest*, Melville's "The Encantatas," as well as in the works of contemporary poets.

Great Northwest Fiction
En 392 SA 01, 5 credits, 7-week

Ken Kesey, Tom Robbins, Richard Brautigan, Raymond Carver, Ivan Doig, and Margaret Craven are among important writers examined in this course on contemporary fiction. The works here are rooted in and illuminate the special Northwest sensibility and experience. Fiction appropriate to different audiences is emphasized.

FINE ARTS — DRAMA

Video Profile
Dr 419 SA 01, 5 credits, MWF, Second Term

This class is designed for those who will appear in public in various roles and situations: the interview, group discussions, panels, demonstrations. Students will be videotaped so that they may study themselves and evaluate the effectiveness of their appearance. A unit of the class will concentrate on "image," with a specific exercise designed for each student's particular need. At the end of the course each student will have a video profile.



OF SPECIAL INTEREST

HISTORY

Food and Western Civilization
Hs 391 SA01, 5 credits, 7-week

Leadership in History: Orient and West
HS 492 SA01, 5 credits, 7-week

See class listing for details.



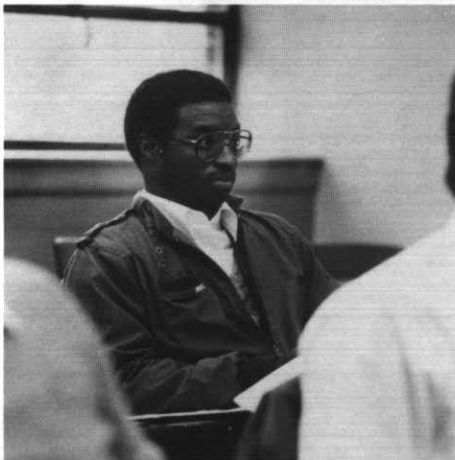
NURSING

Planned Change for Health Professionals As a Professional Development Strategy
N 393 01, 3 credits, 8-week

Principles of planned change in developing current and future professional goals, as they relate to 1) health care trends and 2) change theory, linking these concepts to individual professional developments within the health care system. Teaching methods will include lectures, group discussions, and value clarification exercises.

Leadership Skills for Health Professionals
N 493 01, 3 credits, 8-week

An upper division elective which is designed to provide the beginning Health Professionals with theoretical bases and practical application for effective leadership skills within the current health care system. Class topics will be interwoven with the contemporary texts: *Power Play* and *Games Mother Never Taught You* to demonstrate how corporate change in the world of business can be applied to nursing leadership of the 80's. Topics will include decision making, conflict resolution, organizing and leading meetings, "how to's" of delegation and supervision, and the language of a professional. This class is open and applicable to all allied health professionals.



PHILOSOPHY

Philosophy of Nature
Pl 300 01 (ISC 291 SB 01), 5 credit, 8-week

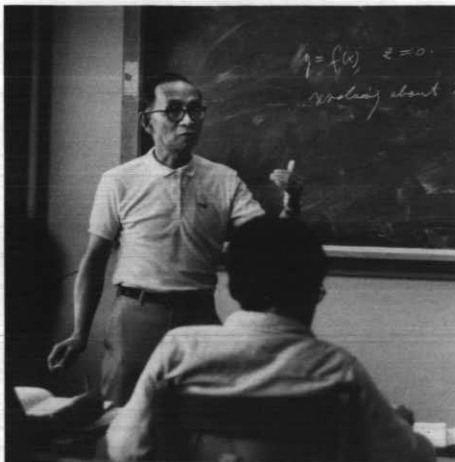
Philosophical discussion of recent cosmological theory, centering on the genesis, evolution and ultimate fate of the universe. Topics will include the Big Bang, cosmic expansion, and the Giant Crunch; space, time, and black holes; order, disorder, and the emergence of life; the Anthropic Principle and the relations of cosmology to theology. Offered 5:30-7:30 p.m., Tuesday and Thursday.

Philosophy of Atheism
Pl 391 SA 01, 5 credits, 7-week

Critical assessment of some of the foremost contemporary arguments against the existence of God. We will also attempt to uncover and critically examine the presuppositions of atheistic and agnostic positions.

Lonergan: Method in Philosophy and Theology
Pl 491 SA 01, 5 credits, 7-week

This course will consider the philosophy of Bernard Lonergan as the foundation of a new methodology in both philosophy and theology. Our approach will be to situate Lonergan in the context of contemporary hermeneutic philosophy and to explore how his account of the knowing process has illuminated the issue of truth and method in both philosophy and theology. As time permits, we will also explore the impact of Lonergan's philosophy on the methodologies of the natural and human sciences in general.





OF SPECIAL INTEREST

PHYSICS

Introduction to Astronomy
Ph 110 01, 5 credits, 7-week

Motions of heavenly bodies; the solar system; introduction to stars, galaxies, quasars, and black holes. Telescopic observation available. This class is a core science option.



POLITICAL SCIENCE

U.S. Foreign Policy
Pls 365 01, 5 credits, 7-week

Elected officials, bureaucrats, and interest groups in policy making. Relevance of public opinion, economic interest, and the psychology of being Number One. Trade, aid, Soviet Union, and Latin America will be discussed.

Human Rights and Repression in World Politics
Pls 491 SA 01, 5 credits, 7-week

An inquiry into the condition of human rights in the contemporary world, in developing and developed nations, in the communist and non-communist world. This course addresses the causes of governmental repression and the role of the international system in curbing or encouraging repression.



THEOLOGY/RELIGIOUS STUDIES

Religious Experience in Story and Autobiography
RS 291 SA 01, 5 credits, 7-week

Major religious autobiographies and stories, from St. Paul through the 20th century, with primary focus on the patterns of religious experience of the person.

The Commandment of Love: Scripture and Theology
RS 391 SA 01, 5 credits, 7-week

Scriptural and theological development of the great commandment, the transforming gift that can touch, transfigure, and heal personal and communal life.



NON-CREDIT PROGRAMS FOR PERSONS 60 OR OVER offered through CONTINUING EDUCATION Department

Elderaudit

Elders may audit classes for \$35 per class on a space available basis with permission of instructor. For further details write to Continuing Education, Seattle University, Seattle, WA 98122, or phone (206) 626-6626.

Elderhostel

Seattle University will participate in this major educational movement for the third year. Seven one-week programs will be offered beginning June 16. Each week three special courses and extracurricular activities will be offered to 45 Hostellers who will board and room at Bellarmine Hall. REGISTRATION THROUGH THE BOSTON OFFICE ONLY. Write to: ELDERHOSTEL, 80 Boylston St., Suite 400, Boston, MA 02116.

A limited number of commuters will be accepted each week. For commuter information, write to Continuing Education, Seattle University, Seattle, WA 98122, or phone (206) 626-6636.



ACADEMIC INFORMATION

Admission — Those who wish to be regular students and obtain regular academic credit during the Summer Quarter must make formal application to the University. Application forms may be obtained from the Admissions Office or you may use the form at the back of this Bulletin. Applications and transcripts must be on file by June 14.

Readmission — Former students not enrolled at the University for the Spring Quarter must apply for readmission if they wish to attend the Summer Quarter. Graduates who have not attended since receiving their degrees will be readmitted as fifth year students unless pursuing a Master's or Doctoral degree, in which case the student must file for admission to Graduate School.

Registration — Two registration options are offered: advance registration April 22-26, or registration immediately preceding the session/term. (See registration dates on page 3.) These registration options are open to students continuing from Spring term and to new and readmitted students. New and readmitted students, however, may not register until they have filed for admission and obtained mail confirmation of approval to register.

Auditor — Admission as an auditor must be requested through the Admissions Office and be approved by the dean of the school and the instructor of the course. An auditor will not be required to participate in class discussion or laboratory work. Assignments may be at the discretion of the instructor.

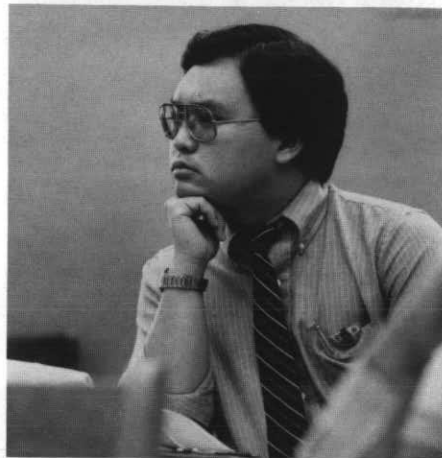
Alumni Audit — Undergraduate classes are open for non-academic audit to Seattle University alumni at \$35.00 per class. The following restrictions apply: 1) the student may not be currently enrolled as a regular student at Seattle University; 2) no credit will be given nor academic record maintained; 3) the classes offered for alumni audit are open on a space-available basis. The requirements for work and class participation are at the discretion of each instructor. Fees and applications for summer alumni audit must be received at the Office of Alumni Relations no later than June 21, the fifth day of class. No refunds will be made after that date. For further information write to Office of Alumni Relations, Seattle University, Seattle, WA 98122, or call (206) 626-5656.

Graduate Courses — Restrictions: Enrollment in graduate courses (500-699) is restricted to those holding status of "graduate student": (Level = G1 or G3) which indicates full admission to the Graduate School to pursue a Master's or Doctoral Program. Students holding 5th year status (Level = 5Y) are not eligible to enroll in courses numbered 500-699 without permission of the Dean of the Graduate School.

Credit — A full quarter's credit (15 hours) may be earned during the summer.

Records — The policy of Seattle University on the right of students' access to their educational records and on confidentiality of information conforms to current public law. The full statement of policy is available for inspection in the Office of the Vice President for Academic Affairs or the Registrar.

Equal Opportunity — Seattle University offers the opportunities and experiences of higher education to all students equally without regard to race, religion, age, sex, or national origin. It does so in keeping with the guidelines and requirements of laws and regulations as promulgated by state and federal agencies.



REGISTRATION

Advance Registration — April 22-26

Continuing students do not require clearance for advance registration; the procedure is simply to prepare a program of study approved by an adviser during the April 22-26 period, and to present the signed form at the Registrar's Office during regular office hours. A fee statement will be mailed after the close of advance registration.

New and readmitted students who obtain mail notification approval to register before April 19 will follow the same procedures as continuing students.

- Consult with department adviser and prepare a program of study on the schedule form. Advisers will be available during registration hours.
- Present the approved schedule form at the Registrar's Office during regular hours, 8:30 a.m. to 4:00 p.m., through April 26 and until 7:00 p.m. the evening of April 23. You will be registered at the Registrar's Office.
- Pay tuition and fees to the Controller during regular office hours, or by mail through June 17.

Registration

Continuing, new, and readmitted students who do not advance register may register on June 14 and June 17 by presenting an adviser-approved schedule form to the Registrar during regular office hours, or from 4:00 to 7:00 p.m. on June 17. Those who do not register by 4:00 p.m. on Friday, June 14, may register the first day of class (June 17). New and readmitted students register between 8:30 a.m.-12:00 noon; continuing students will register between 2:00-7:00 p.m.

Course Changes — Additions and drops for full and first term courses are permitted June 14 to June 21. No program changes may occur after June 21. Drops and additions for short term classes are permitted only for the first two class days of these classes.

Withdrawal — The Registrar's Office must be officially notified when a student withdraws from one or more of his/her courses. See the calendar for withdrawal closing dates for full and short term courses. After closing dates no withdrawals are permitted, and a grade of E or NC will be assigned.

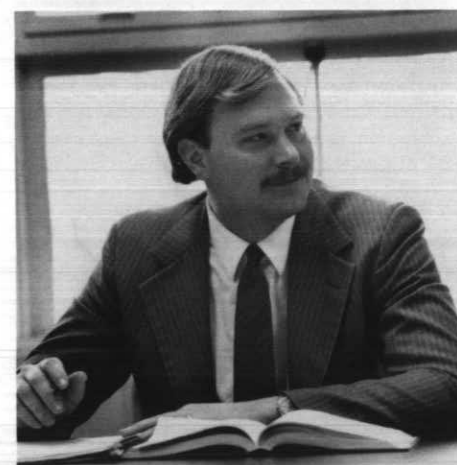
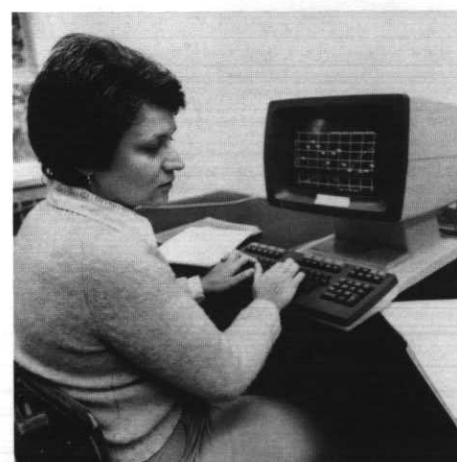
Grades — will be mailed to all students within two weeks of the end of Summer Quarter.

Library Hours

Summer library hours for the A.A. Lemieux Library will be from 8:00 a.m. to 11:00 p.m. Monday through Thursday; Friday from 8:00 a.m. to 5:00 p.m.; Saturday from 9:00 a.m. to 5:00 p.m.; and Sunday from 1:00 p.m. to 11:00 p.m. The reading room on the first floor will be open every day from 7:00 a.m. to midnight. Holiday hours will be posted during the quarter. The library reserves the right to adjust the posted times as necessary.

Book Store

The Book Store is your source for all required textbooks and course-related supplies. In addition, it offers a complete selection of general paperback books and reference books. The store features a wide selection of sweatshirts, T-shirts, and gift items with Seattle University imprinting. Other selections include greeting cards, snack foods, and sundries. You may special order any book not in stock, leave your film for processing, and sell your used books at the end of the quarter. If you have any questions, call (206) 626-5925.



FINANCIAL INFORMATION

Tuition and Fees

POLICY — Tuition Payment

Students registering for classes during the advance registration period from April 22 through April 26 may either pick up their statements in person or may receive them in the mail after April 26. Students registering (or add/drop) after April 26 are expected to pick up their statement the same day at the Controller's Office.

Payment of tuition and fees includes library and health service fees, student activities, and building fund. After a student registers for a course, the University has committed a space in each course for each student. It is the student's responsibility to pay for all fees in full whether the student attends the course(s) or not. Tuition and fee payment for either the Full or First session are due on or before June 17, 1985 — the day classes begin for Summer School. Tuition and fee payments for short courses are due on the first day of the short course. Payments made after that time are subject to the late registration/late payment policies.

Failure to pay in full all tuition and fees of any quarter or session may result in a hold on the student's transcript and may prevent registration in subsequent quarters.

To avoid lines for payment, students are encouraged to pay tuition and fees by mail. Checks should be made payable to Seattle University and mailed to: Seattle University, P.O. Box 84107, Seattle, WA 98124-5407, or delivered in person to the Controller's Office. Date of payment is determined by the date postmarked or by payment in person.

POLICY — Late Registration/Late Payment

Late registration fees of \$10 per day to a maximum of \$80 are charged if tuition and fees are not paid in full according to the session you are attending (see Policy—Tuition Payment for more detail). Late registration/late payment fees shall apply to all checks not honored by banks and returned to Seattle University.

Although Seattle University reserves the right to change its charges at any time without prior notice, after the beginning of a quarter no change will be made effective for that quarter.

Undergraduate courses —
per credit hour \$115.00

Undergraduate Education Courses —
per credit hour 95.00

Masters Programs — per credit hour
Business 162.00
CORPUS 115.00
Education 95.00
Psychology 140.00
Public Administration 140.00
Rehabilitation 140.00
Software Engineering 162.00
SUMORE 95.00
Transportation Engineering .. 140.00

Educational Specialist Programs —
per credit hour 95.00

Doctoral Program — per credit hour
Doctor of Education
in Educational Leadership .. 162.00

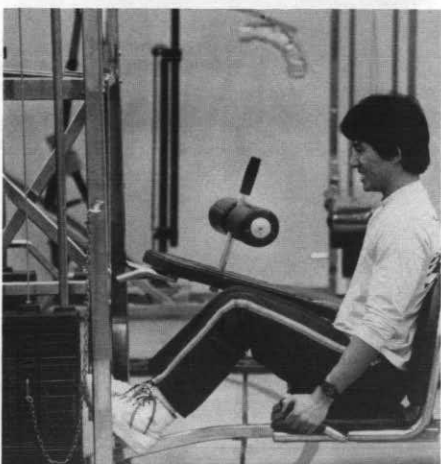
Certificate Programs — per credit hour
Alcohol/Drug Studies 95.00
Applied Sociology 115.00
Health Information 115.00
Human Resources 115.00
Rehabilitation 115.00

Audit (undergraduate courses only)
per credit hour 40.00

Occasional Fees (non-refundable)

Application, undergraduate and graduate 15.00
Application, transient students 15.00
Late Registration (maximum \$80) per day, 10.00
Matriculation, undergraduate and graduate 45.00
Credit by Examination (per credit hour) 40.00
Validation of field experience (per credit hour) 40.00
Removal of Incomplete (per course) 15.00
Graduation, undergraduate (per degree) 40.00
Graduation, graduate (per degree) 60.00

Graduation fees are due at the time of application for graduation, and graduation forms will be released only upon presentation of a receipt. Certificate fee 30.00
Music 110, 111, 123 125.00
For laboratory fees and other occasional fees, consult the 1984-85 Seattle University Bulletin of Information, page 16.



FINANCIAL INFORMATION

Refunds

Refunds are based on the number of class days, defined as consecutive Mondays through Fridays, beginning the first day of class for each session. The refund policy applies to complete withdrawals or reduction in class load. The official date of withdrawal from a course is considered to be the date a student submits the withdrawal or change form to the Registrar. A refund to a financial aid recipient is applied first to the student's financial aid source(s) and the balance, if any, is remitted to the student. Financial Aid recipients will, therefore, in all likelihood, not receive refunds.

If the tuition and/or fees have not yet been paid, the portion normally not refunded is due and payable together with the late fee. Failure to pay the non-refundable tuition and fees may result in transcript holds and may prevent registration in subsequent quarters.

Withdrawal (full or partial)

Full 7-week or 8-week Session:

Through first 7 class days	80%
8th through 12th class day	60%
13th through 15th class day	40%
Thereafter	No refund

Half Session:

Through first 5 class days	70%
6th through 10th class day	35%
Thereafter	No refund
Shorter Sessions	No refund

Financial Aid

During Summer Quarter, loans and Work-Study employment are available. Students desiring long-term loans must apply for a Guaranteed Student Loan approximately eight weeks prior to registration to insure the availability of funds when tuition is due on registration day.

Students who have established Work-Study eligibilities for the preceding academic year may continue to utilize that eligibility through June 30, 1985. Students who have Work-Study eligibility for the 1985-86 academic year are eligible for Work-Study jobs during the summer.

Grants are not offered for the summer session. The Career Planning and Placement Office maintains a listing of both on and off-campus jobs. For specific information, contact the Financial Aid Office, Seattle University, Seattle, WA 98122. Phone: (206) 626-5462.

HOUSING

Room and Board:

First Term: June 17-July 12	\$386.00
Second Term: July 15-August 9	\$386.00
Full 7 Week Session: June 17-August 2	\$675.00
Full 8 Week Session: June 17-August 9	\$771.00

There are no on-campus living accommodations for families. Residence halls will be open June 16 at 9:00 a.m. and will close on August 9. All meals will be served in the Bellarmine Marketplace. Regular food service meals will begin with breakfast on June 17 and end with dinner on August 9. There are no arrangements for room without board. Blankets, pillows, and linen must be provided by each student.

1. Above fees apply to one room, double occupancy. Private rooms are available on a first-come, first-serve basis for an additional \$84.00 per term; \$147.00 for 7-week session, and \$168.00 for the 8-week session. Requests for private rooms will be taken, but not guaranteed, until June.

2. There will be four meal plans offered; the above room and board rates are based on a double room and Plan A. When you apply for summer housing, we will send you complete descriptions and prices for all meal plans.

3. All students check out of the residence halls 24 hours after their final exam.

RESERVATIONS — Admission to the University does not automatically guarantee room reservations. Requests for student housing are made through the Director for Resident Student Services. No deposit is required.

Parking

During regulated hours, all parking on campus is authorized by the display of a valid Seattle University parking permit and will be on a first-come, first-serve basis. Parking permits may be purchased at the Controller's Office in the Book Store Building. Evening students need not purchase parking permits for evening classes. Disabled parking is available in most parking areas. A Seattle University Disabled Parking Permit must be displayed by those parking in these designated areas. For further information call University Security Services at 626-5356.

CLASSES

Course/Section	Description/Credit Session/Time	Instructor Building/Room
----------------	---------------------------------	--------------------------

Schedule

Seattle University reserves the right to cancel any class without prior notice.

Seven-week classes are scheduled for 70-minute blocks and extend from June 17-August 2.

Eight-week classes are scheduled for 60-minute blocks and extend from June 17-August 9.

The first 4-week term will extend from June 17-July 12.

The second 4-week term will extend from July 15-August 9.

Building Code

Ba	Bannan Building
Bu	Buhr Hall
Ca	Campion Tower
CC	Connolly Center
E	Engineering Building
Ga	Garrand Building
GEL	Gene E. Lynn Building
LA	Liberal Arts Building
LL	Lemieux Library
M	Marian Hall
NOC	Not On Campus
PDC	Pacific Dance Center
P	Pigott Building

Alcohol Studies

Short Courses

Alc 400 01	Symposium on Alcoholism (3) June 24-July 5, Daily, 9:00 a.m.-4:00 p.m.	Schnell/Royce Guests P 403
-------------------	---	---

Special emphasis on educational systems. Alcoholism: extent, nature, causes, treatment, and prevention. Disease concept and addiction. Also offered under Psy 490 01 and Ed 491 SL01.

Alc 409 SB 01	Anorexia and Alcoholism (2) July 15-19, Daily, 9:00 a.m.-3:00 p.m.	Roise P 403
----------------------	---	------------------------

The nature of eating disorders (anorexia nervosa and bulimia) and possible links to alcohol/drug abuse. Prerequisites: Alc 402 and 403.

Alc 413 01	Alcoholism Schools Workshop (2) July 8-12, Daily, 9:00 a.m.- 3:00 p.m.	Marshall P 403
-------------------	---	---------------------------

How to teach Alcohol Information (AIS) and DWI Schools. Prerequisite: Alc 400 or permission of Director.

Alc 416 01	Alcohol and Youth (2) August 5-9, Daily, 9:00 a.m.-3:00 p.m.	Hunsaker/ Guests P 403
-------------------	---	---------------------------------------

Intervention and prevention in school systems. Youthful alcohol and drug abuse. Roles of teachers, counselors, and administrators. Prerequisites: Alc 400 and permission of Director.

Course/Section	Description/Credit Session/Time	Instructor Building/Room
----------------	---------------------------------	--------------------------

Alc 422 01	Alcoholics Anonymous as a Resource for Professionals (2) July 8-19, Daily, 4:00-6:00 p.m.	Royce/Schnell/ Guests P 401
-------------------	--	--

History, Steps, Traditions, Philosophy and Psychology of the AA Program. Role in recovery process. Prerequisite: Alc 400 or permission of Director.

Eight-Week Courses

Alc 401 01	Pharmacology/Physiology of Alcohol Use (2) 8-week, Monday, 7:00-9:30 p.m.	Halsey P 403
-------------------	--	-------------------------

Absorption, distribution, excretion, and metabolism. Behavioral effects and chronic organ damage. Prerequisite: Alc 400 or permission of Director.

Alc 402 01	Counseling Principles and Techniques (4) 8-week, MW, 6:00-8:30 p.m.	Dickman P 401
-------------------	---	--------------------------

Patient/counselor relationships. Legal and ethical responsibilities. Directive vs. non-directive. Role playing and videotape playback. Prerequisite: Alc 400.

Alc 402 02	Counseling Principles and Techniques (4) 8-week, TTh, 4:30-6:50 p.m.	Riordan P 405
-------------------	--	--------------------------

Prerequisite: Alc 400.

Alc 402 03	Counseling Principles and Techniques (4) 8-week, TTh, 7:00-9:30 p.m.	Staff P 403
-------------------	--	------------------------

Prerequisite: Alc 400.

Alc 403 01	Personal and Social Rehabilitation (2) 8-week, Tuesday, 7:00- 9:30 p.m.	Huey P 401
-------------------	--	-----------------------

Motivation and personality problems in recovering alcoholics. Sobriety, relapses, dry-dunks; family adjustment and recovery. Prerequisite: Alc 400.

Alc 404 01	Agency Administration (2) 8-week, Tuesday, 7:00- 9:30 p.m.	Schmidt P 405
-------------------	---	--------------------------

Personnel policies, budgeting, management, ethics, confidentiality, public relations. Prerequisite: Alc 400 or permission of Director.

Alc 405 01	Law and Alcohol (2) 8-week, Wednesday, 7:00- 9:00 p.m.	Stromberg P 403
-------------------	---	----------------------------

Legal implications and consequences of alcohol-related offenses. Uniform Act. Deferred prosecution. Courts and jurisdictions. Prerequisite: Alc 400 or permission of Director.

Alc 406 01	Cross-Cultural Counseling (2) 8-week, Wednesday, 7:00- 9:30 p.m.	Bury P 405
-------------------	---	-----------------------

Special problems and techniques. Instruction by members of minority groups to foster understanding of cultural differences. Prerequisites: Alc 400 and 402.

CLASSES

Course/Section	Description/Credit Session/Time	Instructor Building/Room
Alc 407 01	Field Experience I- Alcoholism (3) 8-week, Arranged	Bury Arr
Supervised work in an approved alcoholism facility. Oral and written reports. Prerequisite: Alc 402.		
Alc 408 01	Field Experience II- Drug Abuse (3) 8-week, Arranged	Bury Arr
Supervised work in an approved drug abuse facility. Oral and written reports. Prerequisite: Alc 407.		
Alc 409 SA 01	Alcoholism and Domestic Violence (2) 8-week, Thursday, 7:00-9:30 p.m.	Forbes/Guests P 401
Alcoholism and drug abuse as they relate to spouse and child abuse. Recent legal changes. Prerequisites: Alc 402 and 403.		
Alc 409 SC 01	Treatment of Adolescents (4) 8-week, MW, 7:00-9:30 p.m.	Bogan P 452
Diagnosis, intervention, and treatment strategies for adolescent drug/alcohol abusers. Intensive treatment, continuing treatment, and rehabilitation. Permission of Director.		
Alc 410 50	Individual Research (1-3) 8-week, Arranged	Staff Arr
Open only to students with sufficient academic background to pursue independent study. Permission of Director.		
Alc 414 01	Interview and Diagnosis in Treatment (2) 8-week, Monday, 7:00-9:30 p.m.	Thompson P 405
Procedures and skills in referral and treatment agencies. Intakes, pre-sentence reports, and confidentiality. Prerequisite: Alc 402.		
Alc 421 50	Advanced Project or Research in Alcoholism/Drug Abuse (3-5) 8-week, Arranged	Staff Arr
Replication, original research or scholarly investigation which demonstrates mastery of fact-finding, experimental design, evaluation and presentation of results. Permission of Director.		

Allied Health

CYTOTECHNOLOGY

AH 396 01	Cytotechnology Internship (0) Arranged	Buschman NOC
Clinical Cytotechnology Internship.		

NUCLEAR MEDICINE

AH 453 01	Applied Nuclear Medicine Technology IV (7) Arranged	Mentors NOC
Clinical Nuclear Medicine Internship.		

Course/Section	Description/Credit Session/Time	Instructor Building/Room
AH 459 01	Nuclear Medicine Seminar IV (2) Arranged	Mentors NOC
Clinical Nuclear Medicine Internship.		

RADIATION THERAPY

AH 463 01	National Certifying Examination (7) Arranged	Mentors NOC
Clinical Radiation Therapy Internship.		
AH 464 01	Radiation Therapy Seminar (1) Arranged	Skelly Arr
Clinical Radiation Therapy Internship.		

ULTRASOUND

AH 473 01	Clinical Orientation to Ultrasound (10) Arranged	Mentors NOC
Clinical Ultrasound Internship.		
AH 474 01	Clinical Experience in Ultrasound (8) Arranged	Mentors NOC
Clinical Ultrasound Internship.		
AH 483 01	Ultrasound Seminar (2) 8-week, Arranged	Skelly Arr
Clinical Ultrasound Internship.		
AH 484 01	Basic Science of Ultrasound (2) Arranged	Skelly NOC
Clinical Ultrasound Internship.		

Biology

Bl 185 01	Biology of Human Sexuality (5) First, MWF, 1:10-4:30 p.m.	Davis Ga 224 Core Option
Bl 220 01	Microbiology (5) 8-week, MTThF, 10:30-11:30 a.m. Laboratory: Tuesday, 2:30-5:00 p.m.	Staff Ga 332
Introduction to medical microbiology.		
Bl 296 50	Independent Study (1-5) Arranged	Staff Arr
Directed study, lower division. Permission required.		
Bl 496 50	Independent Study (1-5) Arranged	Staff Arr
Directed study, upper division. Permission required.		

CLASSES

Course/Section	Description/Credit Session/Time	Instructor Building/Room
----------------	---------------------------------	--------------------------

Business

Bus 230 01	Principles of Accounting I (5) First, Daily, 1:10-4:10 p.m.-	Staff P 351 Bus Core
------------	---	----------------------------

Prerequisite: Sophomore standing.

Bus 231 01	Principles of Accounting II (5) Second, Daily, 1:10-4:10 p.m.	Staff P 351 Bus Core
------------	--	----------------------------

Prerequisites: Bus 230, Sophomore standing.

Bus 260 01	Business Statistics (5) 8-week, MW, 5:35-7:55 p.m.	Staff P 351 Bus Core
------------	---	----------------------------

Prerequisites: Mt 130, Sophomore standing.

Bus 270 01	Law and Business (5) 8-week, Daily, 11:50 a.m.-1:00 p.m.	Staff P 306 Bus Core
------------	---	----------------------------

Prerequisite: Sophomore standing.

Bus 330 01	Cost Accounting (5) 8-week, MW, 11:50 a.m.-2:20 p.m.	Staff P 353
------------	---	----------------

Prerequisites: Bus 231, Junior standing.

Bus 333 01	Intermediate Accounting II (5) 8-week, TTh, 11:50 a.m.-2:20 p.m.	Staff P 353
------------	---	----------------

Prerequisites: Bus 332, Junior standing.

Bus 334 01	Intermediate Accounting III (5) 8-week, TTh, 5:35-7:55 p.m.	Staff P 351
------------	--	----------------

Prerequisites: Bus 333, Junior standing.

Bus 340 01	Business Finance (5) 8-week, Daily, 9:10-10:20 a.m.	Staff P 353
------------	--	----------------

Prerequisites: Bus 231, Ec 271, Junior standing.

Bus 350 01	Introduction to Marketing (5) 8-week, Daily, 7:50-9:00 a.m.	Staff P 304
------------	--	----------------

Prerequisite: Junior standing.

Bus 351 01	Consumer Behavior (5) 8-week, MW, 11:50 a.m.-2:20 p.m.	Staff P 302
------------	---	----------------

Prerequisites: Bus 350, Junior standing.

Bus 360 01	Production and Operation Management (5) 8-week, TTh, 1:10-3:30 p.m.	Staff P 304
------------	--	----------------

Prerequisites: Bus 260, CSC 113, and Junior standing.

Bus 380 01	Organization Behavior (5) 8-week, MW, 1:10-3:30 p.m.	Staff P 304
------------	---	----------------

Prerequisite: Junior standing.

Bus 435 01	Auditing (5) 8-week, TTh, 5:35-7:55 p.m.	Staff P 353
------------	---	----------------

Prerequisite: Bus 334.

Course/Section	Description/Credit Session/Time	Instructor Building/Room
----------------	---------------------------------	--------------------------

Bus 460 01	Computer Based Management Information Systems (5) 8-week, Daily, 10:30-11:40 a.m.	Staff P 304
------------	--	----------------

Prerequisites: CSC 113, Bus 340, Senior standing.

Bus 482 01	Business Policy and Organization (5) 8-week, MW, 5:35-7:55 p.m.	Staff P 304
------------	--	----------------

Prerequisites: Senior standing and all Business core courses.

Bus 496 50	Independent Study (1-5) Arranged	Staff Arr
------------	-------------------------------------	--------------

Permission of Instructor.

Business Graduate Courses

Bus 501 01	Business Statistics (3) 8-week, TTh, 5:35-7:00 p.m.	Staff P 354
------------	--	----------------

Bus 502 01	Financial Accounting (3) 8-week, MW, 7:15-8:45 p.m.	Staff P 353
------------	--	----------------

Bus 504 01	Marketing Processes (3) 8-week, TTh, 7:15-8:45 p.m.	Staff P 304
------------	--	----------------

Bus 506 01	Economic Analysis (3) 8-week, TTh, 5:35-7:00 p.m.	Staff P 453
------------	--	----------------

Bus 507 01	Organization Behavior (3) 8-week, MW, 5:35-7:00 p.m.	Staff P 302
------------	---	----------------

Bus 530 01	Managerial Accounting (3) 8-week, MW, 5:35-7:00 p.m.	Staff P 353
------------	---	----------------

Prerequisite: Bus 502.

Bus 539 53	Research in Accounting (3) Arranged	Staff Arr
------------	--	--------------

Permission of Instructor.

Bus 549 53	Research in Finance (3) Arranged	Staff Arr
------------	-------------------------------------	--------------

Permission of Instructor.

Bus 550 01	Domestic and International Marketing (3) 8-week, MW, 5:35-7:00 p.m.	Staff P 306
------------	--	----------------

Prerequisite: Bus 504.

Bus 552 01	Marketing Research (3) 8-week, MW, 7:15-8:45 p.m.	Staff P 302
------------	--	----------------

Prerequisite: Bus 550.

Bus 559 53	Research in Marketing (3) Arranged	Staff Arr
------------	---------------------------------------	--------------

Permission of Instructor.

CLASSES

Course/Section	Description/Credit Session/Time	Instructor Building/Room
Bus 560 01	Management Information Systems (3) 8-week, TTh, 5:35-7:00 p.m. Prerequisites: Bus 500, 501, 508.	Staff P 302
Bus 562 01	Advanced Statistical Analysis (3) 8-week, TTh, 7:15-8:45 p.m. Prerequisites: Bus 501, 508.	Staff P 306
Bus 569 53	Research-Operations and Systems (3) 8-week, Arranged Permission of Instructor.	Staff Arr
Bus 570 01	Managerial Economics (3) 8-week, MW, 7:15-8:45 p.m. Prerequisite: Bus 506.	Staff P 306
Bus 579 53	Research-Environmental Area (3) Arranged Permission of Instructor.	Staff Arr
Bus 580 01	Organizational Structure and Theory (3) 8-week, TTh, 7:15-8:45 p.m. Prerequisite: Bus 507.	Staff P 354
Bus 582 01	Decision Theory (3) 8-week, TTh, 5:35-7:00 p.m. Prerequisite: Bus 507.	Staff P 306
Bus 585 01	Management of Change (3) June 21, July 12, August 2 (Fridays), 5:30-8:30 p.m.; June 22, July 13, August 3 (Saturdays), 9:00 a.m.-3:00 p.m. A course on the future: forecasting methods, trends, scenarios. Discussions of change processes (diffusion, revolution, attitude change) and methods of responding. Also offered under Pub 585 01.	Mills P 302
Bus 586 01	Entrepreneurship and Small Business Management (3) 8-week, TTh, 7:15-8:45 p.m.	Staff P 305
Bus 589 53	Research-Behavioral Area (3) Arranged Permission of Instructor.	Staff Arr
Bus 591 SA 01	Forecasting Business Conditions (3) 8-week, MW, 5:35-7:00 p.m. Prerequisites: Bus 501, 506. Fulfills Environmental elective.	Staff P 354
Bus 591 SB 01	Seminar in Negotiating, Mediating, and Advocating (3) Second, MW, 7:15-8:45 p.m.; Saturday, July 20, 9:30 a.m.-5:00 p.m.; Friday, August 2 5:00-10:00 p.m. Fulfills Environmental elective.	Staff P 453

Course/Section	Description/Credit Session/Time	Instructor Building/Room
Bus 591 SC 01	The Executive Mind (3) June 17, 19, 21, 24, 26, 28, and July 1, 3, 7:00-10:00 p.m. Fulfills Behavioral elective.	Weick P 453
Bus 595 01	Business Policy (3) 8-week, TTh, 5:35-7:00 p.m. Prerequisite: All Management Core.	Staff P 452
Bus 596 50	Independent Study (1-3) Arranged Permission of Instructor.	Staff Arr

Chemistry

Ch 123 01	General Chemistry 3 (4) First, Daily, 9:20-11:30 a.m. Oxidation-reduction, chemistry of metals, transition metals, non-metals, electro-chemistry. Prerequisite: Ch 122.	Thorsell Ba 502
Ch 133 01	General Chemistry Lab 3 (1) First, TTh, 1:10-4:10 p.m. Introduction to semimicro qualitative analysis, introduction to quantitative analysis. Prerequisite: Ch 132.	Thorsell Ba 502
Ch 241 01	Organic Chemistry 1 (4) First, Daily, 9:20-11:30 a.m. Beginning organic chemistry for chemistry and biology majors and premed students.	Meany Ba 501
Ch 242 01	Organic Chemistry 2 (4) Second, Daily, 9:20-11:30 a.m. Continuation of Ch 241. Prerequisites: Ch 241 and 251.	Meany Ba 501
Ch 251 01	Organic Chemistry Lab 1 (2) First, TTh, 1:10-5:10 p.m. Laboratory for Ch 241. Corequisite: Ch 241.	Meany Ba 501
Ch 252 01	Organic Chemistry Lab II (2) Second, TTh, 1:10-5:10 p.m. Prerequisite: Ch 251. Corequisite: Ch 242.	Meany Ba 501
Ch 499 50	Undergraduate Research (1-6) Arranged Permission of Chairman.	Staff Arr

Community Services

CS 310 01	Social Work with Families (5) 7-week, Daily, 10:30-11:40 a.m. An introduction to the major systems of family therapy, with emphasis on applying theoretical approaches to the wide range of personal, interactional, and societal problems.	Tolson LA 325
CS 491 SA 01	The Crisis of Suicide (5) First, Daily, 8:20-10:20 a.m. This course will explore the concept of emotional crisis and identify processes for intervention. Techniques of assistance through a study of case histories. For further description see "Of Special Interest" section in front of Bulletin.	Tolson LA 325

CLASSES

Course/Section	Description/Credit Session/Time	Instructor Building/Room
----------------	---------------------------------	--------------------------

Computer Science

CSC 113 01	Introductory Programming with BASIC (5) 8-week, Daily, 8:00-9:00 a.m.	Chang Ba 202
------------	--	-----------------

An introductory class in programming, including the use of the BASIC language. Several programs will be implemented.

CSC 113 02	Introductory Programming with BASIC (5) 8-week, Daily, 10:30-11:30 a.m.	Staff Ba 202
------------	--	-----------------

CSC 114 01	Introductory Programming with FORTRAN (5) 8-week, Daily, 9:20-10:20 a.m.	Ehlers Ba 202
------------	---	------------------

An introductory class in programming, including the use of the FORTRAN language. Several programs will be written and run on the University computer system. Prerequisite: Mt 101.

CSC 150 01	Introduction to Computer Science (5) 8-week, MW, 5:30-8:00 p.m.	Stark Ba 202
------------	--	-----------------

An introduction to the discipline of computer science, including coverage of basic concepts of hardware, software, algorithms, and control/data structures. Prerequisite: CSC 113 or 114.

CSC 170 01	Intermediate Programming with PASCAL (5) 8-week, TTh, 5:30-8:00 p.m.	Stark Ba 202
------------	---	-----------------

An intermediate course in computer programming, involving the use of the PASCAL language. Several programs will be assigned involving fundamental algorithms and data structures. Prerequisites: CSC 150 and Mt 135.

CSC 180 01	Intermediate Programming with COBOL (5) 8-week, TTh, 5:30-8:00 p.m.	Staff Ba 301
------------	--	-----------------

A second level course in computer programming, involving the use of the COBOL language. COBOL continues to be the most widely used language for business applications. Prerequisites: CSC 113 or 114.

Criminal Justice Program

CJP 378 01	Field Experience I (5) 7-week, Arranged	Kagi Arr
------------	--	-------------

Credit/No Credit. Permission of Instructor.

CJP 379 01	Field Experience II (5) 7-week, Arranged	Kagi Arr
------------	---	-------------

Credit/No Credit. Permission of Instructor.

CJP 450 01	Political/Criminal Justice System (5) 7-week, Daily, 7:50-9:00 a.m.	Kagi LA 205
------------	--	----------------

The relationship of political values and partisan influence in the criminal justice system including courts, prosecutors, attorneys, and pressure groups.

CJP 496 55	Independent Study (1-5) 7-week, Arranged	Kagi Arr
------------	---	-------------

Permission of Instructor.

Course/Section	Description/Credit Session/Time	Instructor Building/Room
----------------	---------------------------------	--------------------------

CJP 497 55	Individual Research (1-5) 7-week, Arranged	Kagi Arr
------------	---	-------------

Permission of Instructor.

Economics

Ec 271 01	Principles of Economics—MACRO (5) 8-week, Daily, 9:10-10:20 a.m.	Staff P 304 Core Option Bus Core
-----------	---	---

Prerequisite: Sophomore standing.

Education

One-Week Courses

Ed 491 SA 01	Peaceful Procedures (3) June 17-21, Daily, 9:00 a.m.-4:00 p.m.	Fellers P 453
--------------	---	------------------

Help fight stress and teacher burn-out! This course emphasizes the theory and practice of peaceful organizational methods. (Reduced tuition \$150)

Ed 491 SB 01	Beginning Instructional Theory Into Practice (3) June 17-21, Daily, 9:00 a.m.-4:00 p.m.	Perri P 405
--------------	--	----------------

The elements of successful teaching, distilled from the literature in human learning and from observation of master teachers by Madeline Hunter and her colleagues at UCLA, comprise the content of this course. (Reduced tuition \$150)

Ed 491 SC 01	The Cosmic Creation Story (3) June 24-28, Daily, 9:00 a.m.-4:00 p.m.	Swimme P 405
--------------	---	-----------------

The great spiritual event of our time is the emergence of a common story of creation, appealing to people of every culture and continent. You will begin to understand the human self as intrinsic to the dynamics of the universe. (Reduced tuition \$150)

Ed 508 01	School Superintendent: Politics and Policy (3) June 17-21, Daily, 1:10-6:10 p.m.	Sealey P 455
-----------	---	-----------------

Local, state, and federal political structures and processes which influence and are influenced by education policies. How practicing superintendents use these systems to achieve goals.

Ed 561 SD 01	Putting Leadership to Work (3) July 15-19, Daily, 1:10-4:30 p.m.	Sergiovanni P 354
--------------	---	----------------------

Contact School of Education for further details.

CLASSES

Course/Section	Description/Credit Session/Time	Instructor Building/Room
----------------	---------------------------------	--------------------------

Two-Week Courses

Ed 450 01	Gifted Education: Introduction (3) July 1-12, Daily, 1:10-3:50 p.m.	Langdon/Bronson P 453
-----------	---	--------------------------

Includes definition of areas of giftedness, identification, curriculum modes, program organization, parent involvement, attitudes concerning giftedness, and evaluation of student performance.

Ed 451 01	Gifted Education: Workshop I (3) July 1-12, Daily, 9:10-11:40 a.m.	Olson P 455
-----------	--	----------------

Current issues including identification procedures, right brain/left brain research, evaluation of the gifted student and a sharing forum on giftedness. Prerequisite: Ed 450 or permission of Instructor.

Ed 491 SD 01	Montessori for Teachers/Aides (3) June 17-28, Daily, 1:10-3:40 p.m.	Lange P 551
--------------	---	----------------

Introduction to the philosophy of Maria Montessori. Focus on a variety of methods and materials for teachers and parents of preschool through primary grade children.

Ed 491 SE 01	The Drug Scene (3) June 17-28, Daily, 1:10-3:40 p.m.	Lucey P 401
--------------	--	----------------

Survey of the misuse and abuse of licit and illicit drugs. Scientific information for concerned school personnel presented by professional people working with drug problems and users.

Ed 491 SF 01	Computers in Library/Media Center (2) July 15-26, Daily, 9:00-11:00 a.m.	Towner NOC
--------------	--	---------------

Taught at St. Joseph's school.

Ed 491 SG 01	Word Processing for Teachers (2) July 15-26, Daily, 11:15 a.m.-1:15 p.m.	Monroe NOC
--------------	--	---------------

Taught at St. Joseph's school.

Ed 491 SH 01	Teaching and Learning Logo (2) July 15-26, Daily, 1:30-3:30 p.m.	Marion NOC
--------------	--	---------------

Taught at St. Joseph's school.

Ed 491 SL 01	Symposium on Alcoholism (3) June 24-July 5, Daily, 9:00 a.m.-4:00 p.m.	Schnell/Royce Guests P 403
--------------	--	----------------------------------

Special emphasis on educational systems. Alcoholism: extent, nature, causes, treatment, and prevention. Disease concept and addiction. Also offered under Alc 400 01 and Psy 490 01.

Ed 491 SM 01	Global/International Education (3) First, TTh, 11:50 a.m.-3:05 p.m.	Ogilvie P 302
--------------	---	------------------

Introduction to rationale, models, and materials used in global/international education. Multicultural perspective underlies this course.

Course/Section	Description/Credit Session/Time	Instructor Building/Room
----------------	---------------------------------	--------------------------

Ed 531 01	Individualizing Reading Instruction (3) July 15-26, Daily, 1:10-3:50 p.m.	Haynes P 455
-----------	---	-----------------

The history, theory, and background of individualized reading; emphasis on the eclectic approach and flexibility in classroom organization.

Ed 545 01	Special Methods in Mental Retardation (3) July 15-26, Daily, 1:10-3:40 p.m.	Hilton P 551
-----------	---	-----------------

Educational provisions for the retarded affected by environmental deprivation, sensory and/or other impairments. Prerequisite: Ed 546.

Ed 546 01	Seminar in Mental Retardation (3) July 1-12, Daily, 1:10-3:50 p.m.	Hilton P 551
-----------	--	-----------------

Investigation, analysis, and reporting on studies and trends in education of the mentally retarded. Prerequisite: Ed 426 or equivalent.

Ed 550 01	Gifted Education: Creativity and Productive Thinking (3) July 15-26, 1:10-3:40 p.m.	Langdon/Bronson P 452
-----------	---	--------------------------

Identification and assessment of creative abilities and productive thinking skills; instructional designs, teaching methods for creative and productive outcomes; questioning strategies, futurism, and gifted students. Prerequisite: Ed 450 or permission of Instructor.

First Four-Week Term June 17-July 12

Ed 424 01	Introduction to Learning Disabilities (3) First, Daily, 7:50-9:00 a.m.	Denoon P 551
-----------	--	-----------------

History and current problems in diagnosis and remediation of learning disabilities.

Ed 491 SJ 01	Computers and Instructional Technology (3) First, Daily, 1:30-2:45 p.m.	Towner NOC
--------------	---	---------------

For teachers with little or no previous experience with computers. Taught at St. Joseph's school.

Ed 500 01	Introduction to Research/Graduate Study (3) First, Daily, 7:50-9:00 a.m.	Chattin-McNichols P 456
-----------	--	----------------------------

Introduction to research skills and literature in students' fields. Includes an orientation to graduate studies. Ordinarily taken as first graduate course.

Ed 501 01	Philosophy of Education (3) First, Daily, 11:50 a.m.-1:00 p.m.	Haggerty P 454
-----------	--	-------------------

Philosophical foundations of education and related fields.

Ed 505 01	Fundamentals of Research Design (3) First, Daily, 11:50 a.m.-1:00 p.m.	Chattin-McNichols P 455
-----------	--	----------------------------

Statistical techniques, research design, measurement and evaluation. Development of skills for critical reading of educational research.

CLASSES

Course/Section	Description/Credit Session/Time	Instructor Building/Room
Ed 507 01	Principles of Educational Law (3) First, 7:50-9:00 a.m.	Staff P 452
Introduction to American legal system and principles affecting education. Emphasis on constitutional, statutory, regulatory case precedents applicable nationally to all levels of education.		
Ed 511 01	Counseling Theories (3) First, MWF, 9:10-11:40 a.m.	O'Connor P 551
Theoretical foundations of major counseling approaches with opportunities for in-class practice in simulated counseling interview. Complement to Ed 510, which may be taken concurrently.		
Ed 522 01	Child Psychology/Learning (3) First, Daily, 11:50 a.m.-1:00 p.m.	Guest P 401
Investigation of various theories of child development and learning.		
Ed 524 01	Seminars: Behavior Disorders (3) First, Daily, 11:50 a.m.-1:00 p.m.	Denoon P 551
Overview of practices and rationales in the education of the behavior disordered and/or emotionally disturbed child. Structuring of individualized remedial programs and techniques which utilize existing agencies and personnel.		
Ed 526 01	Reading Practicum Workshop (3) First, Arranged	Staff Arr
Emphasis on task analysis lesson design using ECRI instructions for word recognition and comprehension skills; recording and reporting student learning increments, and study of role and application of materials. Taken concurrently with Ed 532. Permission of Chairperson.		
Ed 530 01	Practicum: Curriculum Design (3) First, Arranged	Tresvant Arr
For teachers and supervisors, kindergarten through college. Provides an experience in program/course development. Prerequisites: Ed 540 and permission of Chairperson.		
Ed 532 01	Field Practicum in Reading (6) First, Arranged	Staff Arr
Supervised field experience in diagnosis and teaching of reading. Prerequisite: Ed 336 or 337.		
Ed 534 01	Seminar: Teaching Reading (3) First, Daily, 7:50-9:00 a.m.	Clark P 455
Development of reading skills at all levels; examination and evaluation of current research, reading materials, practices, and programs. Permission of Chairperson.		
Ed 536 01	Supervision of Instruction (3) First, TTh and alternate Fridays, 9:10-11:40 a.m.	Haggerty P 454
Improvement of instruction through supervisory leadership.		
Ed 540 01	Fundamentals of Curriculum (3) First, MW and alternate Fridays, 9:10-11:40 a.m.	Tresvant P 454
Historical, philosophical foundations, principles, types and methods of curriculum development and organization.		

Course/Section	Description/Credit Session/Time	Instructor Building/Room
Ed 555 01	Practicum: Special Education (3) First, Arranged	Hilton/Guest/Denoon Arr
Diagnostic and prescriptive teaching with children who have learning or behavior problems. Laboratory course.		
Ed 561 SA 01	Financing in Higher Education (3) First, Daily, 9:10-10:20 a.m.	Staff P 401
An examination of the financial issues confronting higher education.		
Ed 561 SC 01	Continuing Certification for Counselors (3) First, TTh, 1:10-4:10 p.m.	Ingram P 454
Curriculum based on WAC regulations for continuing level counseling certification. Emphasis on practical application and growth of personal perspectives on school counseling.		
Ed 561 SD 01	Putting Leadership Theory to Work (3) July 15-19, Daily, 1:10-4:30 p.m.	Sergiovanni P 354
Contact School of Education for further description.		
Ed 583 01	School Finance (3) First, 11:50 a.m.-1:00 p.m.	Albright P 456
Historical development, balanced taxation, school support program problems, and controversies.		
Ed 593 01	School Business Administration (3) First, Daily, 10:30-11:40 a.m.	Albright P 456
Legal and procedural factors in school budgeting, expending, accounting, auditing, planning policy, program budgeting, and community reporting as they relate to federal and state rules and regulations.		
Ed 604 01	Workshop: Organizational Development and Change (3) First, Daily, 1:30-4:30 p.m.	Morford/Wahle/Forbes P 452
Integrated workshop relating to organizational development, conflict management. Required during the second summer in the Ed.D. program. Permission of Instructor.		

Second Four-Week Term July 15-August 9

Ed 425 01	Psychology of the Exceptional Child (3) Second, Daily, 9:10-10:20 a.m.	Dedrick P 456
Study of the atypical child who differs from the norm to well above or below the average; tests for evaluation, consideration of remedial techniques. Prerequisite: Ed 322 or permission of instructor.		
Ed 428 01	Language Development (3) Second, Daily, 10:30-11:40 a.m.	Dedrick P 456
An introduction to critical features of the developmental processes of receptive and expressive language with consideration of diagnosis, curriculum and method.		

CLASSES

Course/Section	Description/Credit Session/Time	Instructor Building/Room
Ed 500 02	Introduction to Research and Graduate Study (3) Second, Daily, 7:50-9:00 a.m.	Zarter P 456
Introduction to research skills and literature in student fields. Includes an orientation to graduate studies. Ordinarily taken as first graduate course.		
Ed 521 01	Adult Psychology/Learning (3) Second, TTh and alternate Fridays, 1:10-3:40 p.m.	Zielinski P 405
Major developmental stage theories and predictable adult crises/passages. Application to both intra and interpersonal development and relations. For educators, counselors, and other helping professionals.		
Ed 523 01	Adolescent Psychology/Learning (3) Second, MW and alternate Fridays, 1:10-3:40 p.m.	Zielinski P 405
Studies in adolescent psychology and learning.		
Ed 535 01	Reading in the Content Fields (3) Second, Daily, 11:50 a.m.-1:00 p.m.	Staff P 405
Decoding and vocabulary analysis comprehension, reading rate, study skills, and reading interests as related to specific content fields. Prerequisite: Ed 336 or 337.		
Ed 543 01	Corrective Techniques in Teaching of Reading (3) Second, Daily, 9:10-10:20 a.m.	Thorleifson P 405
Identification of components of effective corrective reading programs; description and application of specific methods and materials; evaluation and design of corrective reading approaches. Prerequisite: Ed 533.		
Ed 544 01	Seminar: Instructional Effectiveness (3) Second, Daily, 11:50 a.m.-1:00 p.m.	Staff P 452
In-depth analysis of theories and research on the teaching/ learning relationship. Individualized application for experienced teachers at all grade levels and subject areas.		
Ed 561 SB 01	Current Issues in Higher Education (3) Second, Daily, 1:10-2:20 p.m.	Kells P 401
An examination of the major issues facing higher education today.		
Ed 581 01	Fundamentals of Administration (3) Second, Daily, 9:10-10:20 a.m.	Staff P 401
Administration theory, style, criteria, responsibilities, process and management by objectives.		
Ed 584 01	Washington School Law (3) Second, Daily, 7:50-9:00 a.m.	Howard P 405
School laws of Washington based on its constitution, statutes, administrative code and court precedents. Emphasis on application to the K-12 system. Prerequisite: Ed 507.		
Ed 586 01	Administration of Professional Personnel (3) Second, Daily, 10:30-11:40 a.m.	Staff P 405
Assists mid-management educational administrator to develop a comprehensive plan for meeting faculty and staff personnel needs equitably and effectively.		

Course/Section	Description/Credit Session/Time	Instructor Building/Room
Ed 600 01	Workshop in Educational Leadership (9) Second, Daily, 9:00 a.m.-4:00 p.m.	Morford/Wahle/ Forbes LL Stimson Room
An integrated 4-week workshop in educational leadership. Includes theoretical and practical study of leadership in educational institutions. Required first course in Ed.D. Program. Permission of instructor.		

Full Eight-Week Term June 17-August 9

Ed 491 SK 01	Advanced Grammar and Rhetoric Review (5) 7-week, Daily, 7:50-9:00 a.m.	Spiers P 401
Review course for teachers, prospective teachers, and those who need to improve their skills in writing correctly and effectively. Attention will also be given to methods of teaching grammar and rhetoric to beginning students. Also offered under En 491 SA 01.		
Ed 510 01	Fundamental Counseling Skills (3) 8-week, TTh, 9:10-11:10 a.m.	Owen P 551
Focus on basic counseling skill training through intensive small group practice. Designed to complement Ed 511 which should be taken concurrently. Three 1-hour labs additional.		
Ed 512 01	Informational Services in Counseling (3) 8-week, Tuesday, 4:20-7:20 p.m.	Crow P 456
Examination of the major approaches to career counseling and the role of the counselor as an information source. Will cover agencies and materials addressing occupational, educational and social needs.		
Ed 517 01	Group Counseling Theory and Practice (3) 8-week, MW, 9:10-11:10 a.m.	Owen P 452
Emphasizes group counseling theory. Provides small group experiences to integrate theory and procedures. Discusses possible applications. Prerequisite: Ed 510, 511, or 513. 10-12 hour marathon required.		
Ed 527 01	Counseling Tests and Measurements I (3) 8-week, Monday, 5:00-8:00 p.m.	Calsyn P 551
Familiarization with theory and practice of testing and measurement, sources of information, reliability, validity and appropriateness of commonly used instruments. Prerequisite: Beginning Statistics.		
Ed 537 50	Curriculum Independent Study (1-4) Arranged	Haggerty/Guest/ Hilton/Denoon Arr
Ed 538 50	Program Administrator Internship (3-9) Arranged	Haggerty Arr
Supervised field experience in an educational program administrator specialty. Prerequisites: Ed 530 and permission of Chairperson.		
Ed 539 01	Curriculum Graduate Project (3) Arranged	Haggerty/Guest Hilton/Denoon Arr
Ed 547 01	Diagnosis and Prescription (3) 8-week, TTh, 1:10-3:40 p.m.	Staff P 456
Comparison of various methods used in the diagnosis of learning problems. Selection, administration and analysis of tests, plus writing educational prescriptions. Permission of Chairperson.		

CLASSES

Course/Section	Description/Credit Session/Time	Instructor Building/Room
Ed 551 01	Counseling Practicum (4) 8-week, Thursday, 4:00-8:00 p.m. Supervised counseling experience in which the counselor candidate is responsible for actual counseling cases, with supervision. Prerequisites: Ed 510 and 513 (or 511).	Bestock P 456
Ed 557 50	Counseling: Independent Study (1-3) Arranged	O'Connor/Owen Zielinski Arr
Ed 559 01	Counseling: Graduate Project (3) Arranged	O'Connor/Owen Zielinski Arr
Ed 560 01	Family Counseling (3) 8-week, Wednesday, 4:20-7:20 p.m. Demonstration/discussion focusing on dysfunctional families, including theoretical and practical applications. Prerequisites: Ed 510, 513 and 551.	Bestock P 551
Ed 564 01	Counseling Internship I (4) 8-week, Tuesday, 4:20-7:30 p.m.	O'Connor P 551
Ed 565 01	Counseling Internship II (4) 8-week, Tuesday, 4:30-7:20 p.m.	O'Connor/Owen/ Zielinski P 551
Ed 566 01	Counseling Internship III (3) Arranged	O'Connor/Owen/ Zielinski Arr
Ed 590 01	Administrative Internship I (3) Arranged	Albright Arr
Ed 591 01	Administrative Internship II (3) Arranged	Albright Arr
Ed 592 01	Administrative Internship III (3) Arranged	Albright Arr
Ed 596 01	Administrative Graduate Project (3) Arranged	Albright Arr
Ed 597 01	Administration Independent Study (3) Arranged	Albright Arr
Ed 605 50	Independent Study in Educational Leadership (1-5) Arr Arranged Permission of Instructor.	Forbes/Wahle
Ed 606 50	Independent Study in Educational Leadership (1-5) Arr Arranged Permission of Instructor.	Forbes/Wahle
Ed 607 50	Independent Study in Educational Leadership (1-5) Arr Arranged Permission of Instructor.	Forbes/Wahle

Course/Section	Description/Credit Session/Time	Instructor Building/Room
Ed 608 50	Internship in Educational Leadership (1-9) Arranged Permission of Instructor.	Forbes/Wahle Arr
Ed 610 50	Doctoral Project in Educational Leadership (1-14) Arranged	Morford/Wahle/ Forbes/Zarter
Ed 611 01	Project Continuation (3) 8-week, Arranged	Morford Arr
Ed 612 01	Project Continuation (0) 8-week, Arranged	Morford Arr
Ed 613 01	Project Continuation (0) 8-week, Arranged	Morford Arr
Ed 649 01	Doctoral Enrollment (0) Arranged	Morford Arr

Engineering

Civil Engineering

ECL 461 01	Transportation Systems (3) Second, Daily, 8:00-9:00 a.m.	Staff E 111
Development of transportation systems and social and economic effects. Planning present and future systems methods of public and private financing. Prerequisite: Senior standing.		
ECL 491 SA 01	Cold Regions Engineering (3) First, Daily, 8:00-9:00 a.m.	Skrinde E 101
Design of Engineering Systems for the cold regions. Considerations for design and construction under cold temperatures.		
ECL 519 01 (EML 519)	Engineering Project (3) Arranged	Majors E 105
Preparation of a written engineering report on some facet of transportation. Oral presentation.		
ECL 520 50 (EML 520)	Thesis (3-6) Arranged	Majors E 105
Research in transportation engineering culminating in the writing of a thesis. Oral presentation.		
ECL 596 50 (EML 596)	Independent Study (1-5) Arranged	Staff Arr

Mechanical Engineering

EML 210 01	Engineering Statics (5) 8-week, Daily, 9:20-10:20 a.m.	Lyons E 114
Force and Moment equilibrium, hydrostatics, friction, virtual work. Prerequisites: Mt 135 and Ph 200.		
EML 230 01	Engineering Dynamics (5) 8-week, Daily, 9:20-10:20 a.m.	Gehlen E 111
Kinematics and kinetics of particles, systems of particles and rigid bodies. Impulse-Momentum, Work-Energy. Prerequisites: EML 210 and Mt 136.		

CLASSES

Course/Section	Description/Credit Session/Time	Instructor Building/Room
----------------	---------------------------------	--------------------------

English

En 110 01	Freshman English (5) 7-week, Daily, 9:10-10:20 a.m.	Tadie LA 202 Core
-----------	---	-------------------------

Skills development in written expression with attention to grammar, usage, and the rhetoric of description, deliberation, and argument in formal and informal prose. Pedagogy: the writing of essays modeled on readings from eminent authors, past and present, who embody in their work mastery of the power of language.

En 110 02	Freshman English (5) 7-week, Daily, 10:30-11:40 a.m.	Shurgot LA 202 Core
-----------	--	---------------------------

Skills development in grammar, expository writing and critical thinking.

En 132 01	American Literature (5) 7-week, Daily, 10:30-11:40 a.m.	Spiers P 354 Core Option
-----------	---	--------------------------------

A survey of American Literature from the beginning to the 20th Century.

En 133 01	World Literature (5) 7-week, Daily, 11:50-1:00 p.m.	MacLean LA 202 Core Option
-----------	---	----------------------------------

Reading, analysis, and discussion of the world's literary classics from ancient to modern times.

En 240 01	Introduction to Drama (5) 7-week, Daily, 1:10-2:10 p.m.	Shurgot LA 206 Core Option
-----------	---	----------------------------------

An appreciation of practical understanding and creative analysis of various forms of drama.

En 264 01	Great English Authors I (5) 8-week, MW, 5:30-8:00 p.m.	Taylor P 454 Core Option
-----------	--	--------------------------------

Survey of English literature from *Beowulf* through Donne. This course is required for English majors.

En 307 01	Advanced Writing Skills (5) 7-week, Daily, 1:10-2:20 p.m.	Tadie LA 202
-----------	---	-----------------

Develops advanced writing skills and also communicates techniques of teaching writing. Recommended to practicing as well as future teachers and to all those who want to develop their writing skills.

En 391 SA 01	Faces of Caliban: The Wild Man in Literature (5) 7-week, Daily, 9:10-10:20 a.m.	MacLean LA 204
--------------	---	-------------------

Examines the symbolic meaning and cultural significance of the wild man in civilization. Analysis of literary works ranging from ancient Sumerian, medieval, Renaissance, to modern times.

En 392 SA 01	Great Northwest Fiction (5) 7-week, MW, 5:30-8:00 p.m.	Weihe P 456
--------------	--	----------------

Ken Kesey, Tom Robbins, Richard Carver, Ivan Doig, and Margaret Craven are among the several important writers examined in a course on contemporary fiction which is rooted in, and illuminates, the special Northwest sensibility and experience. Fiction appropriate to different audiences is emphasized.

En 488 01	Film and Literature (5) 8-week, TTh, 5:30-8:00 p.m.	Taylor P 454
-----------	---	-----------------

An introduction to the principles of cinematic art, designed to help students to see, understand, and judge films intelligently and effectively.

Course/Section	Description/Credit Session/Time	Instructor Building/Room
----------------	---------------------------------	--------------------------

En 491 SA 01	Advanced Grammar and Rhetoric Review (5) 7-week, Daily, 7:50-9:00 a.m.	Spiers P 401
--------------	--	-----------------

A review course for teachers, prospective teachers and those who need to improve their skills in writing correctly and effectively. Attention will also be given to methods of grammar and rhetoric to beginning students. Also offered under Ed 491 SK 01.

Fine Arts

Art

Art 221 01	Drawing (2) 7-week, MWF, 10:30-11:30 a.m.	Herard Bu 102
------------	---	------------------

Study of the line and value in the delineation of form; training in awareness and perception, structure and space indication.

Art 334 01	Graphics (2) 7-week, TTh, 10:30-11:40 a.m.	Herard Bu 104
------------	--	------------------

Principles and techniques of lithography.

Art 346 01	Painting (2) First, Tuesday, 9:00-10:50 a.m.	Laigo Bu 102
------------	--	-----------------

Study of the principles and practices of rendering in paint; complex composition; advance problems.

Art 351 01	Sculpture (2) 7-week, MWF, 11:50 a.m.-12:50 p.m.	Herard Bu 104
------------	--	------------------

Principles and practices towards realizing three-dimensional forms.

Art 370 01	Arts and Crafts (5) First, Daily, 1:10-3:10 p.m.	Herard Bu 104
------------	--	------------------

Experience in artistic expression in basic art media for elementary and secondary teachers.

Art 491 SA 01	Japanese Woodblock (2) First, TTh, 1:10-3:10 p.m.	Thiel Bu 106
---------------	---	-----------------

An introduction to the techniques of Japanese Woodblock. Carving of the blocks, preparation of papers, and the printing process. Hanga employs water colors and a variety of woods. No auditors except by permission of Instructor.

Art 491 SB 01	Japanese Calligraphy (2) Second, TTh, 1:10-3:10 p.m.	Thiel Bu 106
---------------	--	-----------------

Japanese Calligraphy is designed for beginning and continuing students, and comprises the aesthetics, history, and techniques of this art form. Three styles of writing will be used to demonstrate the works of ancient masters. Experience in the Japanese language is not required. No auditors except by permission of the Instructor.

Drama

Dr 291 SA 01	Jazz Aerobics (2) First, Daily, 7:50-9:00 a.m.	Legters *PDC
--------------	--	-----------------

A combination of aerobics with jazz technique. Energetic exercise to strengthen the cardiovascular system and increase flexibility and muscle tone. No auditors.

Dr 291 SB 01	Modern Dance I (3) First, Daily, 9:30-11:30 a.m.	Legters PDC
--------------	--	----------------

Basic skills in body movement for the expression of artistic ideas based on the concept of modern dance. No auditors.

CLASSES

Course/Section	Description/Credit Session/Time	Instructor Building/Room
Dr 291 SC 01	Modern Dance II (3) First, Daily, 9:30-11:30 a.m.	Legters PDC
Dr 291 SD 01	Rhythmic Dance Exercise (2) First, Daily, 12:00-1:00 p.m.	Legters PDC

Designed to give students a foundation in body alignment and muscle use through a series of rhythmic exercises emphasizing flexibility and control. No auditors.

Dr 400 50	Ensemble (1-5) Second, Arranged	Dore Arr
Dr 491 SA 01	Video Profiles (5) Second, MWF, 8:00-10:00 a.m.	Dore Bu 119

Designed for people who will appear in public in various roles and situations; interviews, group discussions, panels, and demonstrations. Students will be videotaped so they may study themselves and evaluate the effectiveness of their appearance. For further description see "Of Special Interest" section in front of Bulletin.

*PDC (Pacific Dance Center) is located at 1214 10th Ave., 1½ blocks from campus.

Music

Mu 110 50	*Piano Lessons (1-2) 7-week, Arranged	Barnes Arr
Mu 111 50	*Voice Lessons (1-2) 7-week, Arranged	Schneider Bu 108
Mu 114 01	Music Fundamentals (5) First, Daily, 10:20 a.m.- 12:30 p.m.	Blyth Bu 117

Fundamentals and methods of music leading to an effective music program in the elementary schools. Required of all majors in elementary school education.

Mu 123 50	*Classic Guitar Lessons (1-2) 7-week, Arranged	Smith, W. Arr
Mu 125 50	*Organ Lessons (1-2) 7-week, Arranged	Olson Arr
Mu 310 50	*Piano Lessons (1-2) 7-week, Arranged	Barnes Arr
Mu 311 50	*Voice Lessons (1-2) 7-week, Arranged	Schneider Arr

*See Instructor or department office before beginning of term to schedule lessons. Classes are credit/no credit. No Auditors.

Foreign Languages

Fr 115 01	French Language I, II, III (15)	Milan
Fr 125 01	7-week, Daily, 7:50-11:40 a.m.	LA 208
Fr 135 01		
Sp 115 01	Spanish Language	Heinrich
Sp 125 01	I, II, III (15)	LA 207
Sp 135 01	7-week, Daily, 7:50-11:40 a.m.	

These intensive 15-credit programs are taught by highly skilled specialists in the Marchand Method. The courses enable the student to understand, speak, read, write, and think in the language taught, within a limited vocabulary. These courses take the beginning student through the first year of college French and Spanish in one quarter.

Course/Section	Description/Credit Session/Time	Instructor Building/Room
F1 191 SA 01	Introduction to Russian	Tolmacheva
F1 192 SA 01	I, II (10) 7-week, Daily, 7:50-10:20 a.m.	P 306

Emphasis on oral communication and understanding of culture through language. Basic grammar, some reading and writing. Conducted in Russian. Class meets 2½ hours daily for an accelerated pace; the two courses must be taken together.

General Science

ISC 291 SA 01	Introduction to Mineralogy (5) 8-week, MTThF, 10:30- 11:30 a.m.	Smith, R. Ba 301
---------------	---	---------------------

Examination of the varied forms, forces, and formations of minerals; their utilization as well as their geological setting. Four arranged field trips.

ISC 291 SB 01	Philosophy of Nature (5) 8-week, TTh, 5:30-7:30 p.m.	Deltete LA 203 Core Option
---------------	---	----------------------------------

Philosophical discussion of recent cosmological theory, centering on the genesis, evolution, and ultimate fate of the universe. Also offered under PI 300 01. For further description see "Of Special Interest" section in front of Bulletin.

History

Hs 100 01	Origins of the Modern World (5) 7-week, MWF, 7:50-10:20 a.m.	Harmon LA 221 Core Option
-----------	---	---------------------------------

An interpretation of the historical development of modern society.

Hs 104 01	Western Civilization I (5) 7-week, MWF, 1:10-3:30 p.m.	Harmon LA 221 Core Option
-----------	---	---------------------------------

The development of Western civilization from prehistoric times to the 18th century.

Hs 105 01	Western Civilization II (5) 7-week, Daily, 10:30-11:40 a.m.	Mann LA 221 Core Option
-----------	--	-------------------------------

The development of Western civilization from the 18th to the late 20th century.

Hs 231 01	Survey of the United States (5) 7-week, Daily, 10:30- 11:40 a.m.	Saltvig LA 222 Core Option
-----------	--	----------------------------------

Events, movements, ideas, and institutions of American history from discovery to the present.

Hs 281 01	Survey of Far East Since 1900 (5) 7-week, MWF, 4:30-7:00 p.m.	Mann LA 222 Core Option
-----------	--	-------------------------------

Domestic and International development of China, Japan, and the States of Southeast Asia.

Hs 339 01	Recent United States (5) 7-week, MW, 6:30-9:00 p.m.	Johnson LA 223
-----------	--	-------------------

The culture of the 1920's, the Great Depression, WWII, Contemporary American Society.

CLASSES

Course/Section	Description/Credit Session/Time	Instructor Building/Room
Hs 341 01	The Pacific Northwest (5) 7-week, Daily, 9:10-10:30 a.m.	Dorcy LA 223 Core Option
Past development and present problems of the State comprising the Pacific Northwest, with emphasis on Washington State.		
Hs 391 SA 01	Food and Western Civilization (5) 7-week, Daily, 11:50 a.m.-1:00 p.m.	Parry LA 222
A social history of men and women's most consuming passion.		
Hs 492 SA 01	Leadership in History: Orient and West (5) 7-week, Monday, 4:40-6:50 p.m., plus Sat/Sun day-long seminars-2 weekends on June 29, 30 and July 13, 14.	Harmon M 144
An examination in a historical setting, in its perception of itself, others and the norms and sources of leadership. Permission of Instructor only.		

Journalism

Jr 498 50	Independent Study (1-5) Arranged	Staff Arr
Internships in the media. Permission of Chairperson.		

Mathematics

Mt 112 01	College Algebra and Trigonometry (5) 7-week, Daily, 10:30-11:40 a.m.	Mirbagheri P 351
Good background for students who plan to take Mt 134, Calculus, and Analytic Geometry in the Fall. Prerequisite: Mt 101 or one-and-one-half years of high school algebra.		
Mt 118 01	College Algebra for Business (5) 7-week, Daily, 10:30-11:40 a.m.	Staff Ba 402
Required in Business Program. Prerequisite: Mt 101 or equivalent.		
Mt 130 01	Elements of Calculus for Business (5) 7-week, Daily, 7:50-9:00 a.m.	Mirbagheri P 302
Continuation of Mt 118, required in Business Program: a short course in calculus with business applications. Prerequisite: Mt 118.		
Mt 135 01	Calculus and Analytic Geometry II (5) 7-week, Daily, 7:50-9:00 a.m.	Yandl Ba 402
Theory, technique, and applications of integration: differentiation and integration of trigonometric, exponential and logarithmic functions. Prerequisite: Mt 134.		
Mt 136 01	Calculus and Analytic Geometry III (5) 7-week, Daily, 7:50-9:00 a.m.	Troy Ba 201
Indeterminate forms, improper integrals, infinite series, Taylor's Theorem, vectors, polar coordinates, solid analytic geometry. Prerequisite: Mt 135.		

Course/Section	Description/Credit Session/Time	Instructor Building/Room
Mt 200 01	Theory of Arithmetic (5) 7-week, Daily, 10:30-11:40 a.m.	Staff P 306
Designed for future elementary school teachers. Prerequisite: Mt 101 or 175 or equivalent.		
Mt 222 01	Discrete Structures (5) 7-week, Daily, 10:30-11:40 a.m.	Troy P 451
Logic, set theory, Boolean algebra, algebraic structures, graph theory and combinatorics; introductions to abstract machines and formal languages; compatibility concepts. Emphasis on applications to computer science. Prerequisites: Mt 135, and CSC 113 or 114.		
Mt 232 01	Multivariable Calculus (3) 7-week, MTTh, 7:50-9:00 a.m.	Guy, W. Ba 403
Partial derivatives, multiple integration and applications. Prerequisite: Mt 136.		
Mt 233 01	Linear Algebra (3) 7-week, MTTh, 10:30-11:40 a.m.	Guy, W. Ba 403
Matrices, determinants, vector spaces, linear transformation, eigenvalues. Prerequisite: Mt 136.		

Military Science

MS 215 01	Basic Course Equivalent I (0) 6-week, Arranged	Staff NOC Arr
Selected students attend six weeks at Ft. Knox, KY, during the summer and qualify for enrollment in Advanced ROTC. Designed for sophomores and incoming juniors. Military skills oriented. All costs are paid by Department of the Army. Permission of Professor of Military Science.		
MS 216 01	Basic Course Equivalent II (6) 8-week, Daily, 9:20-10:20 a.m.	Staff MS
An eight-week summer session, on campus, which compresses the Basic Course Program. Includes introduction to military science roles, missions of the Army, leadership, officership, communication skills, overview of military history. A detailed program. Permission of Professor of Military Science.		
MS 314 01	Advanced Camp (4) 6-week, Arranged	Staff NOC Arr
Successful completion is a prerequisite to commissioning. During six weeks at Ft. Lewis, students are placed in a variety of roles and situations and practice their leadership and management competencies in the broader context of officership. Prerequisites: MS 311, 312, and 313. Permission of Professor of Military Science.		
MS 315 01	Advanced Camp-Nursing (4) 6-week, Arranged	Staff Arr
Successful completion is a prerequisite to commissioning. During six weeks at Madigan Army Medical Center, nursing students are placed in a variety of roles as an Army Nurse to develop their professional competencies — both as a nurse and as an officer. Prerequisites: MS 311, 312, and 313. Permission of Professor of Military Science.		

CLASSES

Course/Section	Description/Credit Session/Time	Instructor Building/Room	Course/Section	Description/Credit Session/Time	Instructor Building/Room
----------------	---------------------------------	--------------------------	----------------	---------------------------------	--------------------------

Nursing

N 393 SA 01	Planned Change for Health Professionals (3) 8-week, Tuesday, 4:00-7:00 p.m.	McDonald P 304
-------------	--	----------------

Principles of planned change in developing current and future professional goals, as they relate to 1) health care trends, and 2) change theory. For further description see "Of Special Interest" section in front of Bulletin.

N 493 SA 01	Leadership Skills for Health Professionals (3) 8-week, Thursday, 4:00-7:00 p.m.	McDonald P 304
-------------	--	----------------

An upper division elective which is designed to provide the beginning Health Professionals with theoretical bases and practical application for effective leadership skills within the current health care system. See "Of Special Interest" section in front of Bulletin for further description.

Philosophy

PI 110 01	Philosophical Problems: World (5) 7-week, Daily, 9:10-10:20 a.m.	Dickerson LA 224 Core
-----------	---	--------------------------

A combined historical and problematic approach to the nature of philosophical inquiry. An introduction to fundamental philosophical problems of being, language, logic, knowledge, reality, human existence, and God.

PI 110 02	Philosophical Problems: World (5) 7-week, Daily, 10:30-11:40 a.m.	Risser LA 203 Core
-----------	--	-----------------------

PI 110 03	Philosophical Problems: World (5) 8-week, MW 5:30-8:00 p.m.	Staff LA 220 Core
-----------	--	----------------------

PI 220 01	Philosophical Problems: Human Person (5) 7-week, Daily, 9:10-10:20 a.m.	Burke LA 222 Core
-----------	--	----------------------

Systematic study of the nature and powers of the human person. Special emphasis on the problems of human knowing, freedom, and responsibility.

PI 220 02	Philosophical Problems: The Human Person (5) 7-week, Daily, 10:30-11:40 a.m.	Reichmann LA 204 Core
-----------	---	--------------------------

PI 220 03	Philosophical Problems: The Human Person (5) 7-week, Daily, 10:30-11:40 a.m.	McGinley LA 206 Core
-----------	---	-------------------------

PI 220 04	Philosophical Problems: The Human Person (5) 8-week, MWTh, 5:30-7:10 p.m.	Stickers LA 321 Core
-----------	--	-------------------------

PI 250 01	Ethics (5) 7-week, Daily, 7:50-9:00 a.m.	Harkins LA 204 Core Option
-----------	---	-------------------------------

A study of the general theory of moral behavior, ethics as a science. It is concerned with the goal of human life, and the human act which is the proper means to attain it. It will study the nature of conscience, and its proper formation with principles drawn from the natural law. These general principles will be applied to all aspects of human life.

PI 250 02	Ethics (5) 7-week, Daily, 10:30-11:40 a.m.	Burke LA 223 Core Option
-----------	---	-----------------------------

PI 252 01	Business Ethics (5) 8-week, MWTh, 8:10-9:50 p.m.	Stickers LA 203 Core Option
-----------	---	--------------------------------

Application of general ethical theory to those problems directly related to the business world: employment practices, wages, advertising, honesty, strikes. Prerequisite: PI 220.

PI 260 01	Logic I (5) 7-week, Daily, 9:10-10:20 a.m.	Risser LA 203 Core Option
-----------	---	------------------------------

Systematic treatment of traditional logic.

PI 300 01	Philosophy of Nature (5) 8-week, TTh, 5:30-8:00 p.m.	Deltete LA 203 Core Option
-----------	---	-------------------------------

Philosophical discussion of recent cosmological theory, centering on the genesis, evolution, and ultimate fate of the universe. Also offered under ISC 291 SB 01. For further description see "Of Special Interest" section in front of Bulletin.

PI 391 SA 01	Philosophy of Atheism (5) 7-week, Daily, 10:30-11:40 a.m.	Dickerson LA 224 Core Option
--------------	--	---------------------------------

Critical assessment of foremost contemporary arguments against the existence of God. Will also attempt to uncover and critically examine the presuppositions of atheistic and agnostic positions.

PI 491 SA 01	Lonergan: Method in Philosophy and Theology (5) 7-week, Daily, 9:10-10:20 a.m.	McGinley LA 206 Core Option
--------------	---	--------------------------------

This course will consider the philosophy of Bernard Lonergan as the foundation of a new methodology in both philosophy and theology. For further description see "Of Special Interest" section in front of Bulletin.

Physics

Ph 110 01	Introduction to Astronomy (5) 7-week, Daily, 10:30-11:40 a.m.	Toutonghi Ba 401 Core Option
-----------	--	---------------------------------

Motions of heavenly bodies; the solar system; introduction to stars, galaxies, quasars and black holes. Telescopic observation available.

Ph 200 01	Mechanics (5) 8-week, MTThF, 9:10-10:10 a.m. Laboratory: Tuesday, 1:10-4:00 p.m.	Toutonghi Ba 401 Ba 307
-----------	--	----------------------------

Physics for students of science and engineering. Prerequisite: Mt 134.

CLASSES

Course/Section	Description/Credit Session/Time	Instructor Building/Room
Ph 204 01	Relativity (2) 8-week, TTh, 9:10-10:10 a.m.	Guy Ba 301
An introduction to Einstein's theory of special relativity. The Lorentz transformation; relativistic kinematics and dynamics. Prerequisites: Ph 201 and Mt 135.		
Ph 205 01	Introduction to Quantum Physics (3) 8-week, MWF, 8:00-9:00 a.m.	Guy Ba 301
Evidence for the quantization of light, matter, and energy; the nuclear atom; wave-particle duality; the uncertainty principle; the Schrodinger equation and its applications. Prerequisites: Mt 232 and Ph 202.		

Political Science

Pls 210 01	Introduction to Local and State Politics (5) 8-week, TTh, 5:30-8:00 p.m.	Hogan LA 207
Discussion of the role and importance of states and cities to the American Citizen. Expansion of state power as a result of Reagan New Federalism is stressed, along with greater citizen participation through the initiative device. The city's fiscal situation is examined in the light of shrinking resources, and tax payer revolts. New service arrangements - contracting out private vendors - are analyzed.		
Pls 291 SA 01	The Politics of Central America and Mexico (5) 7-week, Daily, 9:10-10:20 a.m.	Andersen Ba 201
An examination of the diversity of political systems in the region between the United States and South America, the background and dimensions of current conflict in Central America, Mexico's revolutionary history and unique political structures and processes, and the history and current trends of U.S. involvement in the region.		
Pls 365 01	U.S. Foreign Policy (5) 7-week, Daily, 10:30-11:40 a.m.	Scharf E 101
Elected officials, bureaucrats, and interest groups in policy-making. Relevance of public opinion, economic interest, and the psychology of being Number One. Trade, aid, Soviet Union and Latin America.		
Pls 491 SA 01	Human Rights and Repression in World Politics (5) 7-week, Daily, 10:50 a.m.-1:00 p.m.	Andersen LA 205
An inquiry into the condition of human rights in the contemporary world: in developing nations and more developed nations, in the non-communist and the communist world. The course addresses the causes of governmental repression and the role of the international system in curbing or encouraging repression.		

Psychology

Psy 100 01	Introduction to Psychology (5) 7-week, Daily, 10:30-11:40 a.m.	Rowe P 401 Core
Approach, methods, and content of psychology, conceived as a human science.		

Psy 201 01	Statistics (5) 7-week, Daily, 7:50-9:00 a.m.	Gaffney P 352
Basic descriptive and inferential statistics: central tendency, variability, correlation, and regression.		
Psy 293 SA 01	The Self at Mid-life (5) First, Daily, 12:00-2:10 p.m.	Gerber LA 203
Does life really begin at 40? or is it 35? or 50? What is it like to be at mid-life or approaching this stage in our youth-oriented society? Issues will be discussed via novels, research, and sharing of experiences. Open to students of all ages.		
Psy 315 01	Abnormal Psychology (5) 7-week, Daily, 10:30-11:40 a.m.	Halling Ba 201 Core
Understanding the behavior of persons labelled as having psychological problems with emphasis on the context of family. Discussion of treatment approaches and the change process.		
Psy 322 01	Psychology of Growth and Development (5) 7-week, Daily, 9:10-10:20 a.m.	Young LA 205 Core
Human development over the life span. Stages of growth. Conditions necessary for maximizing the potential of the individual.		
Psy 461 01	Theory of Group Dynamics (2) 7-week, TTh, 1:10-3:50 p.m.	Rowe LA 325
General overview of the theory of group process. Concurrent with Psy 462.		
Psy 462 01	Experience of Group Dynamics (3) 7-week, TTh, 1:10-3:50 p.m.	Rowe LA 325
Explore aspects of group process and dynamics via an experiential group. Concurrent with Psy 461.		
Psy 490 01	Symposium on Alcoholism (3) June 24-July 5, Daily 9:00 a.m.-4:00 p.m.	Schnell/Royce Guests P 403
Special emphasis on educational systems. Alcoholism: extent, nature, causes, treatment, and prevention. Disease concept and addiction. Also offered under Alc 400 01 and Ed 491 SL 01.		
Psy 493 SA 01	Explorations into the Self (5) First, Daily, 8:10-10:20 a.m.	Gerber P 354
Exploring for ourselves the question of "Who am I?" at this point and place in our lives. We will use autobiographical writings, dreams, and literature to guide us in this process. Permission of Instructor.		
Psy 496 50	Independent Study (2-5) Arranged	Staff Arr

Public Service

Pub 349 01	Collective Bargaining (5) 8-week, MW, 5:30-8:00 p.m.	Sawyer LA 202
History and statutory requirements, dynamics, and strategies of labor-management relations. Simulation of a realistic collective bargaining situation.		

CLASSES

Course/Section	Description/Credit Session/Time	Instructor Building/Room
Pub 494 01	Lifework Planning (1) July 19, Friday, 6:30-9:00 p.m. July 20, Saturday, 9:00 a.m.-4:00 p.m.	Walton-House P 302
	Practicum covering life stages, career patterns, and opportunities, changes in the work force, and planning and managing personal change.	
Pub 542 01	Public Personnel Management (3) 8-week, Wednesday, 5:30-8:30 p.m.	Mills, D. LA 320
	Historic, present, and future role of personnel functions. Development of civil service, job classification, performance evaluation, current issues, training, and disciplinary procedures.	
Pub 585 01	Management of Change (3) June 21, July 12, August 2 (Fridays), 5:30-8:30 p.m.; June 22, July 13, August 3 (Saturdays), 9:00 a.m.-3:00 p.m.	Mills, D. P 302
	A course on the future: forecasting methods, trends, scenarios. Discussions of change processes (diffusion, revolution, attitude change) and methods of responding. Also offered under Bus 585 01.	
Pub 592 SA 01	Oral Communications for Administrators (3) 8-week, Tuesday, 5:30-8:30 p.m.	Mills, E. LA 320
	Oral communication practicum within the context of the contemporary organization. Some theory, but emphasis will be on performance. Differentiated assignments according to the needs and professional applications of individual students.	
Pub 592 SA 02	Social Equity and Public Policy (3) 8-week, Thursday, 5:30-8:30 p.m.	Blanchard LA 320
	Are public policies fair? How do we decide? What can we change? An inquiry into beliefs about the reality of social inequality. Seminar format, building on Instructor's research.	

Rehabilitation

Rhb 210 01	Field Experience (5) 8-week, Arranged	Thompson Arr
	Actual experience in an agency or institution setting within a rehabilitation teamwork. Coordinating seminars are an integral part of each Field Experience course. Prerequisites: Rhb 100 and 201. Credit/No Credit.	
Rhb 310 01	Field Experience (5) 8-week, Arranged Credit/No Credit	Thompson Arr
Rhb 410 50	Field Experience (5-15) 8-week, Arranged Credit/No Credit	Thompson Arr
Rhb 425 01	Loss and Grief (5) First, MW, 5:00-8:00 p.m.	Haney P 305
	Loss and grieving process as they relate to illness, injury, disability, and dying.	

Rhb 492 SA 01	Private Sector Testing (3) 8-week, Thursday, 6:00-9:00 p.m.	Afanador P 455
	Overview of tests used in the private rehabilitation sector, test selection; administration and reporting of results will be emphasized; ethical considerations will be included.	
Rhb 493 SA 01	Ethics in Rehabilitation (3) 7-week, TTh, 4:00-6:00 p.m.	Thompson P 451
	Situations, problems, professional judgment, and conflicts of interest in rehabilitation will be presented to students to facilitate their identification and development of sound ethical service delivery practices.	
Rhb 520 01	Group Process in Rehabilitation (3) 8-week, Tuesday, 6:00-9:00 p.m.	Afanador P 455
	Seminar on the rehabilitation process. Techniques and selected counseling theories are applied to groups in conjunction with one supervised Practicum experience.	
Rhb 530 01	Practicum/Rehabilitation (3) Arranged	Haney Arr
	Counseling experience. Applying the principles of rehabilitation. Student works part-time in a rehabilitation agency. One hour of individual supervision per two hours of Practicum experience.	
Rhb 531 01	Practicum/Rehabilitation (3) Arranged	Haney Arr
Rhb 532 50	Practicum/Rehabilitation (3) Arranged	Haney Arr
Rhb 580 50	Internship in Rehabilitation (1-6) Arranged	Thompson/ Afanador/Haney Arr
	Full-time placement in a rehabilitation setting, integrating and applying knowledge from the classroom. Further development of counseling skills emphasized. Student supervised by faculty and agency.	

Sociology

Sc 291 SA 01	Rehabilitating Offenders (5) 8-week, TTh, 5:30-8:00 p.m.	Scharf, P. LA 202
	Psychological, sociological, and educational perspectives on achieving personal change in correctional settings.	
Sc 362 01	Deviant Behavior (5) 8-week, Daily, 11:00 a.m.-12:15 p.m.	Scharf, P. P 352
	An overview of sexual, criminal, and mental health and other aspects of social deviance.	

Speech

Sph 200 01	Public Speaking (5) 8-week, MW, 5:30-8:00 p.m.	Sullivan LA 204
	Develops the performance skills of students through the theory and practice of formal and informal oral communication.	
Sph 201 01	Interpersonal Communication (5) Second, Daily, 12:00-1:30 p.m.	Dore LA 223
	Through theory and practice this course will raise the student's consciousness of, and skill in, observing and engaging in verbal and non-verbal communication.	

CLASSES

Course/Section	Description/Credit Session/Time	Instructor Building/Room
----------------	---------------------------------	--------------------------

SUMORE—Graduate Classes

RS 501 01	Theologies of the New Testament (3) July 1-12, Daily, 9:00-11:45 a.m.	Barta LA 220
-----------	--	-----------------

Examines New Testament: tensions and conflicts of early Christian lives. In response to communities in crisis the theologies offer pastoral guides and rich insights into ministry. Permission of Director.

RS 503 01	Christology (3) June 18-28, Daily, 9:00-11:45 a.m.	Hart P 305
-----------	---	---------------

A survey of theological reflection on Jesus of Nazareth from biblical, patristic, conciliar, scholastic, and contemporary sources. Permission of Director.

RS 504 01	The Church As Community (3) July 29-August 9, Daily, 9:00-11:45 a.m.	Ring LA 220
-----------	---	----------------

Biblical, historical, and theological reflections on the meaning of the Church. Themes: Christ, the Spirit, and the Church; past and present images of the Church; the role of women in the Church; the relationship between Church and world; the future shape of the Church. Permission of Director.

RS 509 01	Moral Theology (3) July 15-26, Daily, 9:00-11:45 a.m.	Gudorf P 305
-----------	--	-----------------

Examines and compares the traditional model for moral theology with the biblical/revisionist model and with the emerging feminist/liberationist model. Permission of Director.

RS 512 01	Liturgy (2) July 1-11, MTWTh, 6:30-9:00 p.m.	Empereur LA 307
-----------	---	--------------------

This course will center on the five-fold discipline of liturgy by developing models of contemporary parish celebrations of Eucharist, Initiation, Reconciliation, and Marriage. Permission of Director.

RS 520 01	Spiritual Direction (2) July 15-25, MTWTh, 6:30-9:00 p.m.	Carroll/Dyckman LA 307
-----------	--	---------------------------

A basic course in the practice of spiritual direction designed for those interested either in receiving or giving such direction. Permission of Director.

RS 523 01	Christian Anthropology (3) July 15-26, Daily, 9:00-11:45 a.m.	Rolheiser LA 220
-----------	--	---------------------

A Christian view of the human person. Theological perspectives on the origin, structure, condition of the world, relationship to God and others (grace and community), and the final destiny of the human person. Permission of Director.

RS 528 01	Christian Self-Image (3) June 18-28, Daily, 9:00-11:45 a.m.	Francoeur LA 220
-----------	--	---------------------

An analysis of the development and clarification of our self-image as it is dynamically influenced by conscience, the presence of God, and Christian community. Permission of Director.

Course/Section	Description/Credit Session/Time	Instructor Building/Room
----------------	---------------------------------	--------------------------

RS 537 01	History of Christian Social Thought (3) July 1-12, Daily, 9:00-11:45 a.m.	Steidlmeier P 405
-----------	--	----------------------

This course concentrates on the foundations of social justice ministry. Explicitly combines theological reflections embodied in Christian social thought with contemporary social science analysis. Permission of Director.

RS 543 01	Principles and Practices of Social Justice Ministry (2) July 15-26, MTWTh, 6:30-9:00 p.m.	McGinnis LA 305
-----------	--	--------------------

A Christian understanding of justice and peace and an examination of various dimensions of action: political, economic, cultural, and religious. Permission of Director.

RS 547 01	Interpersonal Process (2) June 18-28, Daily, 2:00-4:30 p.m.	Ferder/Heagle LA 307
-----------	--	-------------------------

Introducing the student to awareness of self and others, development of listening skills, examining barriers to effective interpersonal communication, constructive use of feedback and empathic responding, developing basics for community support system. Permission of Director. SUMORE students only.

RS 548 01	Conflict Resolution (2) June 18-28, Daily, 2:00-4:30 p.m.	Rochelle-Stephens LA 305
-----------	--	-----------------------------

Enables participants to become more effective in negotiating the large and small daily conflicts in their professional and personal lives. Includes theory input, interpersonal sharing, and skill-building and awareness exercises. Permission of Director. SUMORE students only.

RS 549 01	Leadership and Organization (2) June 18-28, Daily, 2:00-4:30 p.m.	Staff P 305
-----------	--	----------------

Deals with leadership styles, values underlying various approaches to dealing with people, organizational functioning, team building as it applies to health group interaction. Permission of Director. SUMORE students only.

RS 550 01	Theories of Religious Education (2) July 1-12, Daily, 9:30-11:30 a.m.	Moran P 305
-----------	--	----------------

A study of the emergence of the religious education field in the 20th century with special reference to theories of development. The tension between church concerns and modern secular education. Permission of Director.

RS 566 01	Pastoral Counseling (3)	Team-taught
RS 566 02	July 1-12, Daily, 8:30-11:45 a.m.	LA 307
RS 566 03		LA 305
RS 566 04		LL 108
		LL 112

An experiential approach to learning basic skills in effective counseling, considered in relationship to the role of ministers and pastoral concerns. Permission of Director. SUMORE students only.

CLASSES

Course/Section	Description/Credit Session/Time	Instructor Building/Room
----------------	---------------------------------	--------------------------

RS 580 01	Graduate Project (3) Arranged	Staff Arr
-----------	----------------------------------	--------------

RS 587 01	Practicum I (2) July 15-26, MTWTh, 2:00-4:30 p.m.	Douziech/Lead LA 307
-----------	--	-------------------------

This practicum helps those involved in various ministries determine areas for personal growth. A wholistic-growth plan is introduced and used as the basis for a growth-covenant. Permission of Director. SUMORE students only.

RS 588 50	Practicum II (2-4) July 15-26, 8:00-8:45 a.m.	Douziech/Lead LA 307
-----------	--	-------------------------

In this practicum the focus for growth is on ourselves as professionals within the Church. Consists of a process to help formulate professional goals which, with the aid of a local mentor, will enhance the performance of our ministry. Permission of Director. SUMORE students only.

RS 589 50	Practicum III (2-4) Arranged	Staff Arr
-----------	---------------------------------	--------------

RS 590 SA 01	Spirituality (2) July 29-August 9, Daily, 9:30-11:30 a.m.	Fischer P 305
--------------	--	------------------

This course will explore the relationship of feminism to Christian spirituality in such areas as images of God and women; language and worship; women's historical contributions to spirituality; psychological perspectives on human wholeness; non-violence and peace; and the discipleship of equals. Permission of Director.

RS 590 SB 01	New Testament Seminar (2) July 1-11, MTWTh, 6:30-9:00 p.m.	Marrow LA 224
--------------	---	------------------

After an examination of the background and conversion of Paul, this course will take up the major themes of Christian freedom in the Pauline epistles: freedom from sin, law, and death; freedom in ministry, marriage, worship, Christian conduct. Permission of Director.



Course/Section	Description/Credit Session/Time	Instructor Building/Room
----------------	---------------------------------	--------------------------



RS 590 SC 01	Recovering History (1) July 29-August 1, MTWTh 2:00-4:30 p.m.	McKenna LA 305
--------------	--	-------------------

A reflective and demanding look at the alternative histories of women, from various traditions and sources, as bases for building a structure of power. Concentration on Third World theologies, storytelling traditions from Jewish, Indian, Zen, American Indian, and contemporary tales; diaries, journals, songs, art forms. Permission of Director.

RS 595 50	Independent Study (1-6) Arranged	Staff Arr
-----------	-------------------------------------	--------------

Theology and Religious Studies

RS 200 01	Judaeo Christian Origins (5) 7-weeks, Daily, 11:50 a.m.-1:00 p.m.	Staff LA 204 Core Level I
-----------	--	---------------------------------

Historical background and development of Israelite and Jewish religious experience and tradition; its contribution to the foundations of belief in the Christ.

RS 243 01	The Christian in Action: Moral Decision-Making (5) 8-week, MWTh, 5:30-7:30 p.m.	Blanchette LA 206 Core Level I
-----------	--	--------------------------------------

The contemporary Christian as decision-maker in our present society.

CLASSES

Course/Section	Description/Credit Session/Time	Instructor Building/Room
----------------	---------------------------------	--------------------------

RS 291 SA 01	Religious Experience in Story and Autobiography (5) 7-weeks, Daily, 10:30-11:40 a.m.	Leigh P 353 Core Level I
--------------	---	-----------------------------

Major religious autobiographies and stories from St. Paul through the 20th century, with primary focus on the patterns of religious experience of the person.

RS 303 01	A Theology of the Human (5) 7-week, Daily, 9:10-10:20 a.m.	Early P 302
-----------	---	-------------

Investigation of human persons in their relation to God, to other humans, to the world; questions and Christian responses to questions about human structures, purpose, meaning, fulfillment, self-identify, and function in a world marked by suffering and sin—and by the salvation brought by Christ. Prerequisite: Level I.

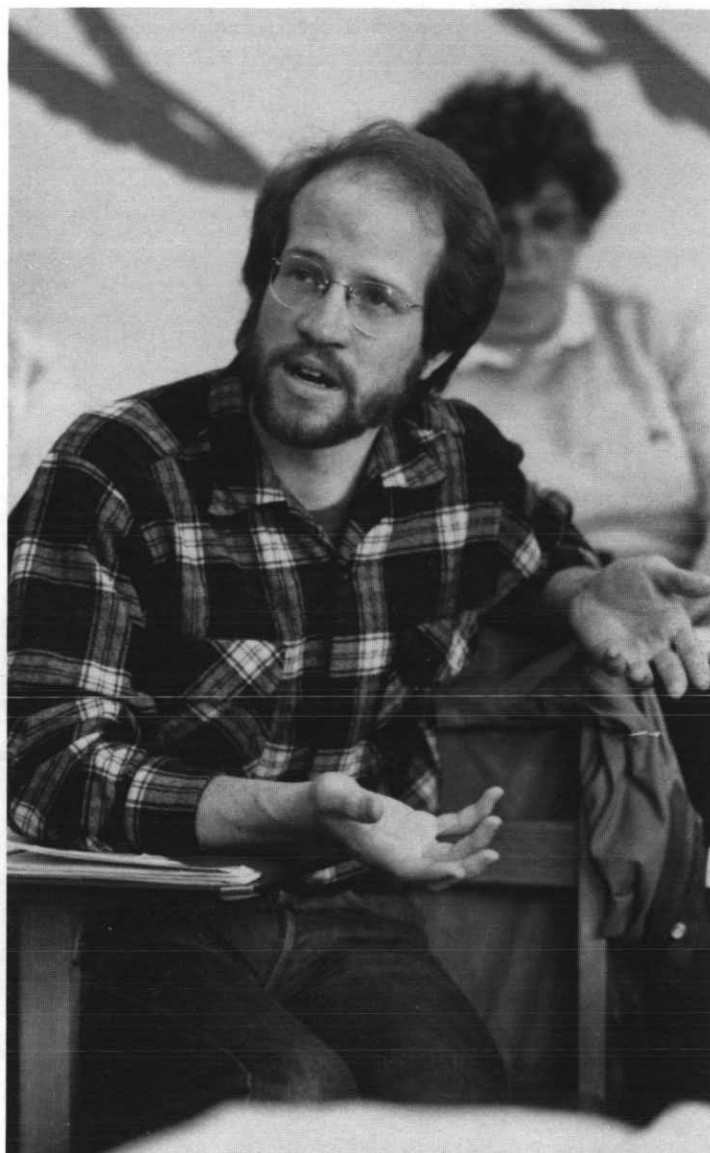
RS 338 01	Christian Views of Love, Sexuality and Marriage (5) 7-week, Daily, 10:30-11:40 a.m.	Sauvain P 302
-----------	--	---------------

The meaning of love experiences and their expression in human sexuality in light of God's loving relation with each person. Examination of moral/spiritual dimensions of sexuality; relationship of human sexuality and marriage; marriage as a symbol and sacramental expression of God's love; present procedures and regulations for marriage. Prerequisite: Level I.

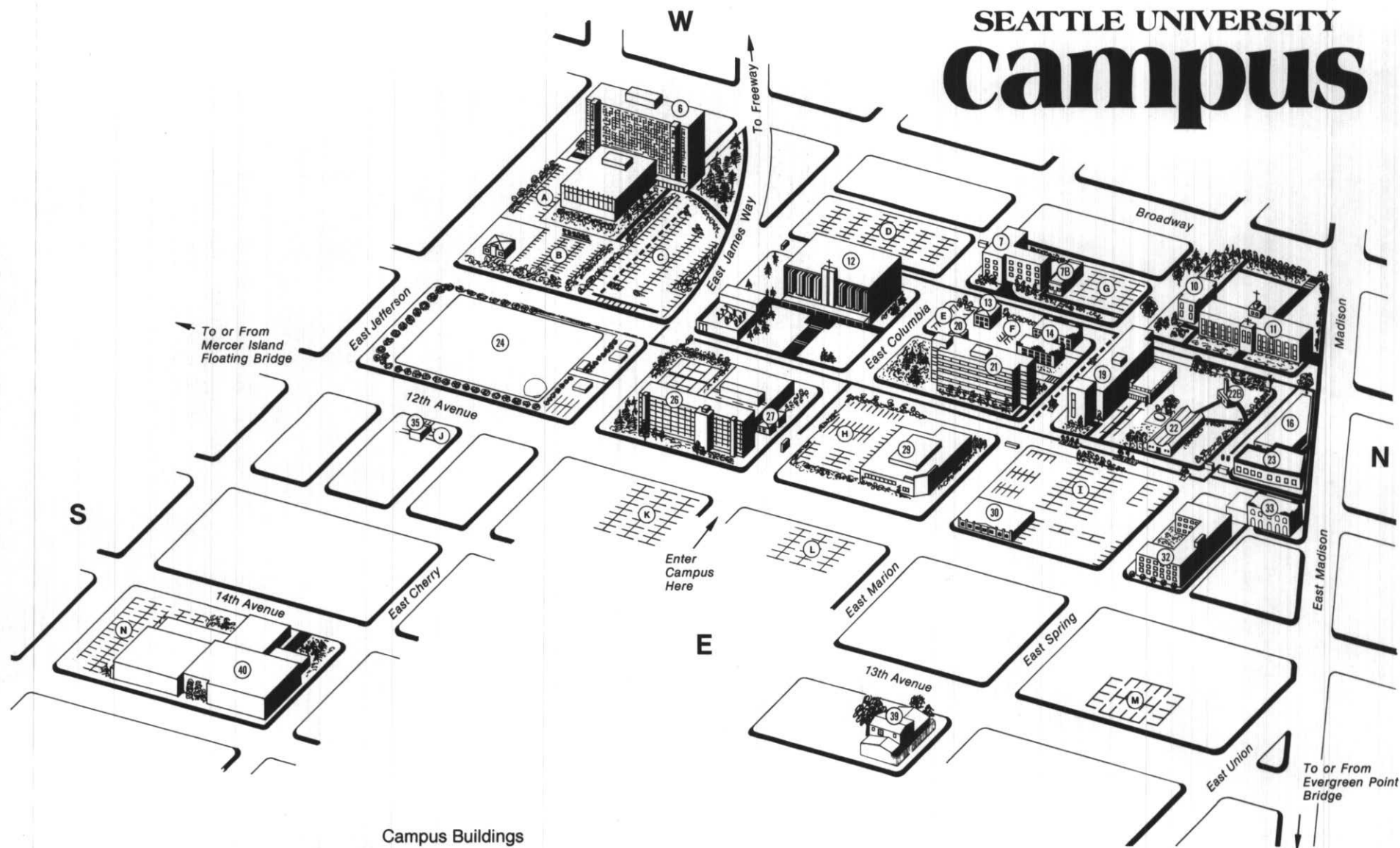
RS 391 SA 01	The Commandment of Love: Scripture and Theology (5) 7-week, Daily, 7:50-9:00 a.m.	Navone LA 202
--------------	--	---------------

Scriptural and theological development of the great commandment, the transforming gift that can touch, transfigure, and heal personal and communal life. Prerequisite: Level I.

Course/Section	Description/Credit Session/Time	Instructor Building/Room
----------------	---------------------------------	--------------------------



SEATTLE UNIVERSITY campus



Campus Buildings

- ♣ Bannan Building 21
- ♣ Bellarmine Residence Hall 26
- ♣ Book Store Building 29
- ♣ Buhr Hall 22
- ♣ Campion Tower 6
- ♣ Campus Services Building 30
- ♣ Child Care Center 39
- ♣ Connolly Center 40
- ♣ Connolly Center Parking N Ⓚ
- ♣ Engineering Building 16
- ♣ Faculty/Staff Parking A, E Ⓚ, G Ⓚ, I, J, N Ⓚ

- ♣ Garrand Building 10
- ♣ International Student Center 20
- ♣ Intramural Field 24
- ♣ Lemieux Library 12
- ♣ Liberal Arts Building 11
- ♣ Loyola Annex 7B
- ♣ Loyola Hall 7
- ♣ Loyola Hall Parking F
- ♣ Lynn Nursing Building 7
- ♣ Marian Hall 14
- ♣ McGoldrick Student Development Center 27
- ♣ Pigott Building 19

- ♣ Pigott Auditorium 19
- ♣ ROTC Headquarters 13
- ♣ Sculpture Lab 22B
- ♣ Student Parking B, C Ⓚ, D, K, L, M, N Ⓚ
- ♣ Student Union 23
- ♣ Twelfth Ave. Building 35
- ♣ Visitor Parking H Ⓚ
- ♣ Xavier Residence Hall 32

KEY

NOTE: Building numbers on map correspond to signs in front of buildings.

- ♣ Accessible entrance and elevator
- ♣ Accessible entrance to one floor
- ♣ Not accessible
- Ⓚ Disabled parking
- ♣ Accessible path
- ♣ Power operated

SEATTLE UNIVERSITY, SEATTLE, WASHINGTON 98122

Application for ADMISSION: regular grad ☐ regular undergrad ☐ \$15 fee

Application for READMISSION: ☐ no fee

FULL LEGAL NAME—LAST				FIRST		MIDDLE		MAIDEN	
LOCAL STREET ADDRESS						LOCAL PHONE NO.			
CITY				COUNTY		STATE		ZIP	
PERMANENT HOME ADDRESS						AREA PHONE NO.			
CITY				COUNTY		STATE		ZIP	

SOCIAL SECURITY NUMBER:	
WHEN DO YOU WISH TO ENROLL? YEAR <input type="checkbox"/> FALL (SEPT) <input type="checkbox"/> WINTER (JAN) <input type="checkbox"/> SPRING (MAR) <input type="checkbox"/> SUMMER (JUN)	
LAST ENROLLED AT SU? QTR/YR	
MAJOR WHEN LAST ENROLLED?	
ANY OTHER NAME UNDER WHICH YOU WERE ENROLLED?	
YOUR EDUCATIONAL OBJECTIVES AT SU?	
<input type="checkbox"/> FIRST BACHELOR DEGREE <input type="checkbox"/> ADDITIONAL BACHELOR DEGREE <input type="checkbox"/> MASTER DEGREE <input type="checkbox"/> DOCTORATE <input type="checkbox"/> EDUC PROVISIONAL CERTIFICATE <input type="checkbox"/> EDUC STANDARD CERTIFICATE <input type="checkbox"/> SCHOOL COUNSELING CERTIFICATE <input type="checkbox"/> SCHOOL ADMIN. CERTIFICATE <input type="checkbox"/> EDUCATIONAL SPECIALIST CERTIFICATE <input type="checkbox"/> OTHER CERTIFICATE	

ADMISSION INFORMATION

IN WHICH SCHOOL DO YOU WISH TO ENROLL? <input type="checkbox"/> ARTS & SCIENCES <input type="checkbox"/> BUSINESS <input type="checkbox"/> EDUCATION <input type="checkbox"/> INSTITUTE OF PUBLIC SERVICE	WHAT MAJOR DESIRED? <input type="checkbox"/> MATTEO RICCI COLLEGE <input type="checkbox"/> NURSING <input type="checkbox"/> SCIENCE & ENGINEERING <input type="checkbox"/> GRADUATE
---	---

RESIDENCE INFORMATION

WASHINGTON RESIDENT? <input type="checkbox"/> Yes <input type="checkbox"/> No	MO. DAY YR. BIRTHDATE	BIRTHPLACE
CITIZEN OF US <input type="checkbox"/> Yes <input type="checkbox"/> No	CITIZENSHIP, IF NOT US TYPE OF VISA	

CULTURAL OR PROFESSIONAL ENRICHMENT COURSES
<input type="checkbox"/> UNDERGRADUATE <input type="checkbox"/> GRADUATE <input type="checkbox"/> OTHER DESCRIBE

BIOGRAPHICAL INFORMATION

SEX <input type="checkbox"/> FEMALE <input type="checkbox"/> MALE	MARITAL STATUS <input type="checkbox"/> SINGLE <input type="checkbox"/> MARRIED	ETHNIC ORIGIN (OPTIONAL) <input type="checkbox"/> AMERICAN INDIAN <input type="checkbox"/> ASIAN AMERICAN	<input type="checkbox"/> BLACK AFRO AMERICAN <input type="checkbox"/> HISPANIC AMERICAN <input type="checkbox"/> WHITE AMERICAN	FOREIGN NATIONAL <input type="checkbox"/> OTHER	RELIGION (OPTIONAL) <input type="checkbox"/> CATHOLIC <input type="checkbox"/> OTHER
---	---	---	---	--	--

IF YOU WERE ENROLLED AT S.U. WITHIN THE LAST YEAR: IF YOU WISH THE SAME MAJOR AND PROGRAM, AND IF YOU HAVE TAKEN NO INTERVENING COURSES AT OTHER UNIVERSITIES, CHECK BOX AT FAR RIGHT AND SKIP TO SIGNATURE. ☐ NO INTERVENING COURSE WORK

NOTE: IF THIS IS YOUR FIRST APPLICATION FOR GRADUATE DEGREE PROGRAM, DO NOT SKIP.

ARE YOU NOW ENROLLED ELSEWHERE? <input type="checkbox"/> Yes <input type="checkbox"/> No	WHAT ARE YOU STUDYING AND WHEN WILL YOU FINISH?					
LIST COLLEGIATE INSTITUTIONS, INCLUDING SEATTLE UNIVERSITY, IN ORDER OF ATTENDANCE						
INSTITUTION	CITY	STATE	DATES ATTENDED FROM TO	DEGREE	DATE RECEIVED	MAJOR
1)						
2)						
3)						
4)						
5)						

CURRENT EMPLOYER—NAME OF FIRM	JOB TITLE	BUSINESS PHONE
CURRENT EMPLOYER—BUSINESS ADDRESS	CITY STATE ZIP	DATE EMPLOYED
PREVIOUS EMPLOYERS	CITY AND STATE	DATES FROM—MO/YR TO MO/YR

I CERTIFY THAT THE FOREGOING INFORMATION CONTAINED IN THIS APPLICATION IS TRUE AND CORRECT. I UNDERSTAND THAT MISREPRESENTATION OR OMISSION OF INFORMATION SUCH AS FAILURE TO LIST ALL SCHOOLS, COLLEGES, OR UNIVERSITIES ATTENDED MAY RESULT IN THE DENIAL OF THIS APPLICATION OR MY SUBSEQUENT DISMISSAL FROM THE UNIVERSITY AND LOSS OF CREDIT.

DATE _____ 19____	MR <input type="checkbox"/> MRS <input type="checkbox"/> REV <input type="checkbox"/> MS <input type="checkbox"/> SR <input type="checkbox"/> DR <input type="checkbox"/> MISS <input type="checkbox"/> BRO <input type="checkbox"/>	FULL LEGAL SIGNATURE _____
-------------------	--	----------------------------

SEATTLE UNIVERSITY SUMMER SESSION

Director Summer Session
Seattle University
Seattle, WA 98122