

1982

1982 Bulletin of Information - Summer School

Seattle University

Follow this and additional works at: <http://scholarworks.seattleu.edu/bulletinofinformation>

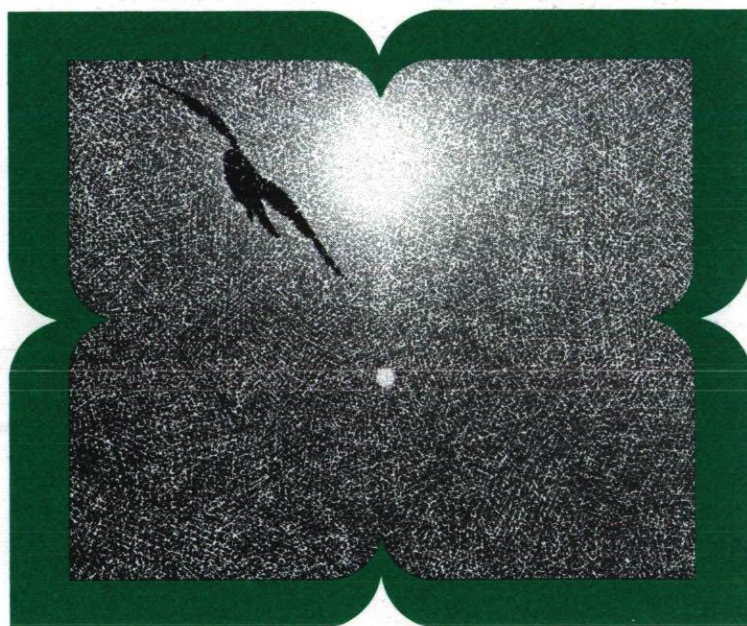
Recommended Citation

Seattle University, "1982 Bulletin of Information - Summer School" (1982). *Bulletin of Information*. 115.
<http://scholarworks.seattleu.edu/bulletinofinformation/115>

This Bulletin is brought to you for free and open access by ScholarWorks @ SeattleU. It has been accepted for inclusion in Bulletin of Information by an authorized administrator of ScholarWorks @ SeattleU.

SUMMER SESSION

JUNE 21 TO AUGUST 13, 1982



SEATTLE UNIVERSITY

BULLETIN OF INFORMATION



SUMMER 1982

Director of Summer School
Joseph B. Monda, Ph.D.
Seattle University
Seattle, Washington 98122

WHERE TO CALL FOR DETAILED INFORMATION

Admissions Office	626-5720
Alumni Office	626-5656
Arts and Sciences, College of	626-5986
Bellarmino Hall	626-6858
Business, Albers School of	626-5456
Campion Tower	626-5638
Campus Ministry	626-5900
Controller's Office	626-5747
Counseling Center	626-5846
Education, School of	626-5416
Financial Aid Office	626-5462
General Studies	626-5387
Graduate School	626-6320
Housing (Resident Student Services)	626-5920
International Student Adviser	626-5388
Library	626-6859
Minority Affairs Office	626-6226
Nursing, Office of	626-6380
Registrar's Office	626-5700
Science and Engineering, School of	626-6250
Students, Dean for	626-6782
Summer School Director	626-5361
SUMORE Office	626-5318

FOR INFORMATION

ADMISSIONS
(206) 626-5720

REGISTRAR
(206) 626-5700

SCHOOL OF EDUCATION
(206) 626-5416

Volume 13, No. 4
Summer, 1982

Seattle University
Bulletin of Information USPS 487-740
Published Quarterly by Seattle University
Seattle, Washington 98122
Second class postage paid at Seattle, Washington

An Equal Opportunity Employer
Editor/Jean Merlino

Information concerning graduate and undergraduate programs may be obtained in supplementary bulletins.



ACADEMIC CALENDAR

Advance Registration	May 3-14
Evening hours to 7:00 p.m.	May 5 and 11
Registration Closed	May 17-June 16
Registration Days	
Full Sessions and First Term	June 17, 18, 21
Evening hours to 7:00 p.m.	June 17 and 21
Second Term	July 19, 20
Other Short Term Courses and Workshops	First 2 days of class
Class Begins	June 21
Late Registration	
(Full Sessions and First Term)	June 22-25
Add/Drop/Change	June 17-25
Independence Day — No classes	July 5
Last Day to Withdraw, First Term	July 8
Close of First Term	July 16
Registration, Second Term	July 19, 20
Last Day to Withdraw	
Full Sessions	July 29
Second Term	July 29
Final Examinations	
First Term	July 16
Seven-Week Full Session	August 5, 6
Eight-Week Full Session and Second Term	August 12, 13
Grades Mailed	August 18

SUMMER SCHOOL 1982

7-Week Session	June 21-August 6
8-Week Session	June 21-August 13
First 4-Week Term	June 21-July 16
Second 4-Week Term	July 19-August 13
For shorter terms, see schedule of classes.	

SEATTLE UNIVERSITY

Seattle University is an independent, coeducational institution, operated under the auspices of the Jesuit Order, with a faculty and staff which includes Jesuits as well as lay people of various faiths. The University's urban campus is located in the First Hill area, five minutes from the heart of the city. Civic, cultural, and recreational facilities are within easy access of the campus.

The University is composed of eight major academic units with 44 undergraduate and 12 graduate programs of study: the College of Arts and Sciences, Albers School of Business, School of Education, School of Science and Engineering, School of Nursing, Matteo Ricci College II, Graduate School, and the Institute of Public Service.

It is accredited by the Northwest Association of Schools and Colleges, National League for Nursing, American Chemical Society, Engineering Council for Professional Development, and the American Association of Collegiate Schools of Business. The University is a member of the Independent Colleges of Washington.

Seattle University's teacher training programs are approved by the State of Washington and qualify its students for teaching certificates and principals' credentials issued by the State Department of Public Instruction. The School of Education, approved by the Washington State Board of Education, offers programs leading to the Bachelor of Arts of Education and the Bachelor of Education degrees and graduate and fifth-year programs.

The Graduate School includes Master's programs in business administration, education and recreation, psychology, public administration, rehabilitation, religious education and ministry, software engineering, and transportation engineering. It also includes a Doctoral program in Education.

SUMMER SCHOOL OFFERINGS

SUMMARY 1982

ALCOHOL STUDIES

Alc 400 01	Symposium on Alcoholism (3)	June 21-July 2
Alc 401 01	Pharmacology/Physiology of Alcohol Use (2)	8-Week
Alc 402 01	Counseling Principles/Techniques (3)	8-Week
Alc 402 02	Counseling Principles/Techniques (3)	8-Week
Alc 403 01	Personal and Social Rehabilitation (2)	8-Week
Alc 404 01	Agency Administration (2)	July 12-16
Alc 405 01	Law and Alcohol (2)	July 19-30
Alc 406 01	Cross-Cultural Counseling (2)	8-Week
Alc 407 01	Field Experience I — Alcoholism (3)	8-Week
Alc 408 01	Field Experience II — Alcoholism/Drug Abuse (3)	8-Week
Alc 409 SA 01	Telephone Therapy (1)	July 12-16
Alc 409 SB 01	Women, Alcoholism and Drug Abuse	July 6-16
Alc 409 SC 01	Alcohol/Drug Abuse and Disabled Person (3)	July 19-30
Alc 409 SD 01	Sexuality for Alcoholism Counselors (1)	June 22-July 13
Alc 409 SE 01	Resource Development for Agencies/Schools (2)	June 21-July 2
Alc 410 50	Individual Research (1-3)	8-Week
Alc 412 01	Group Dynamics in Treatment (2)	8-Week
Alc 413 01	Alcoholism Schools Workshop (2)	July 6-9
Alc 421 50	Advanced Project or Research in Alcoholism/Drug Abuse (2-5)	8-Week
Alc 422 01	AA. As a Resource for Professionals (1)	July 6-9
Alc 425 01	Drug Abuse II: Physiological Aspects (2)	8-Week

ALLIED HEALTH

AH 453 01	Applied Nuclear Medicine Technology (7)	Arranged
AH 459 01	Nuclear Medicine Seminar IV (2)	Arranged
AH 473 01	Clinical Orientation of Ultrasound (10)	Arranged
AH 474 01	Clinical Experience in Ultrasound (8)	Arranged
AH 483 01	Ultrasound Seminar (2)	8-Week
AH 484 01	Basic Science of Ultrasound (2)	Arranged

BIOLOGY

Bl 220 01	Microbiology (5)	8-Week
Bl 292 SA 01	Biological Basis of Human Sexuality (5)	8-Week
Bl 296 50	Independent Study (1-5)	Arranged
Bl 310 01	Comparative Vertebrate Embryology (5)	8-Week
Bl 350 01	Genetics (3)	8-Week
Bl 351 01	Genetics Laboratory (2)	8-Week
Bl 492 SA 01	Developmental Biology: Comparative Anatomy (5)	8-Week
Bl 496 50	Independent Study (1-5)	Arranged

BUSINESS

Bus 211 01	Business Statistics (5)	8-Week
Bus 230 01	Principles of Accounting I (5)	8-Week
Bus 231 01	Principles of Accounting II (5)	8-Week
Bus 270 01	Law and Business (5)	8-Week
Bus 330-01	Cost Accounting (5)	8-Week
Bus 333-01	Intermediate Accounting II (5)	8-Week
Bus 334 01	Intermediate Accounting III (5)	8-Week
Bus 340 01	Business Finance (5)	8-Week
Bus 350 01	Introduction to Marketing (5)	8-Week
Bus 380 01	Organization Behavior (5)	8-Week
Bus 383 01	Personnel Management I (5)	8-Week
Bus 410 01	Computer Based Management Information Systems (5)	8-Week
Bus 480 01	Production and Operations Management (5)	8-Week
Bus 482 01	Business Policy and Organization (5)	8-Week
Bus 492 SB 50	Advanced Accounting Practice and Theory (5)	8-Week
Bus 496 50	Independent Study (1-5)	Arranged

BUSINESS GRADUATE COURSES

Bus 501 01	Business Statistics (3)	8-Week
Bus 502 01	Financial Accounting (3)	8-Week
Bus 503 01	Corporate Financial Theory (3)	8-Week
Bus 504 01	Marketing Processes (3)	8-Week
Bus 505 01	Legal Environment (3)	8-Week
Bus 506 01	Economic Analysis (3)	8-Week
Bus 507 01	Organization Behavior (3)	8-Week
Bus 508 01	Production and Operations Management (3)	8-Week
Bus 530 01	Managerial Accounting (3)	8-Week
Bus 539 53	Research in Accounting (3)	8-Week
Bus 540 01	Managerial Finance (3)	8-Week
Bus 542 01	Investments (3)	8-Week
Bus 549 53	Research in Finance (3)	Arranged
Bus 550 01	Domestic and International Marketing (3)	8-Week
Bus 559 53	Research in Marketing (3)	Arranged
Bus 560 01	Management Information Systems (3)	8-Week
Bus 562 01	Advanced Statistical Analysis (3)	8-Week
Bus 569 53	Research (3)	Arranged
Bus 570 01	Managerial Economics (3)	8-Week
Bus 572 01	Labor-Management Issues (3)	8-Week
Bus 578 01	Legal Influences on Business (3)	8-Week
Bus 579 53	Research (3)	Arranged
Bus 580 01	Organization Structure and Theory (3)	8-Week
Bus 581 01	Human Resource Management (3)	8-Week
Bus 585 01	Management of Change (3)	June 25-Aug. 7
Bus 586 01	Small Business Management (3)	8-Week
Bus 589 53	Research (3)	Arranged
Bus 595 01	Business Policy (3)	8-Week
Bus 596 50	Independent Study (1-3)	Arranged

CHEMISTRY

Ch 123 01	General Chemistry III (4)	First
Ch 133 01	General Chemistry Lab III (1)	First
Ch 241 01	Organic Chemistry I (4)	First
Ch 242 01	Organic Chemistry II (4)	Second
Ch 251 01	Organic Chemistry Lab I (2)	First
Ch 252 01	Organic Chemistry Lab II (2)	Second

COMMUNITY SERVICES

CS 410 01	Counseling in Human Services (5)	7-Week
-----------	----------------------------------	--------

COMPUTER SCIENCE

ECS 113 01	Fundamentals of BASIC Programming (5)	8-Week
ECS 113 02	Fundamentals of BASIC Programming (5)	8-Week
ECS 114 01	Fundamentals of FORTRAN Programming (5)	8-Week
ECS 201 01	Introduction to Computer Science (5)	8-Week
ECS 210 01	Intermediate Programming with PASCAL (5)	8-Week
ECS 220 01	Intermediate Programming with COBOL (5)	8-Week

CRIMINAL JUSTICE PROGRAM

CJP 378 50	Field Experience (1-5)	Arranged
CJP 379 50	Field Experience II (1-5)	Arranged
CJP 450 01	Politics of the Criminal Justice System (5)	7-Week
CJP 496 50	Independent Study (1-5)	Arranged

ECONOMICS

Ec 271 01	Principles of Economics — Macro (5)	8-Week
-----------	-------------------------------------	--------

EDUCATION

Ed 424 01	Introduction to Learning Disabilities (3)	First
Ed 425 01	Psychology of Exceptional Child (3)	Second
Ed 428 01	Special Education: Language Development (3)	First
Ed 450 01	Gifted Education: Introduction (3)	June 21-July 2
Ed 452 01	Gifted Education Workshop II (3)	July 6-16
Ed 484 01	The Drug Scene (3)	June 21-July 2
Ed 491 SA 01	History of Catholic Education in the U.S. (1)	June 14-18

Ed 491 SB 01	Beginning Instructional Theory in Practice (ITIP) (3)	June 14-18	Ed 583 01	School Finance (3)	First
Ed 491 SC 01	Stress Management (3)	June 21-25	Ed 584 01	Washington School Law (3)	Second
Ed 491 SD 01	Mainstreaming Adapted Curriculum (3)	July 6-16	Ed 585 01	Values and Leadership Instruction (3)	July 19-30
Ed 491 SE 01	Montessori Language Arts for Elementary School (5)	First	Ed 586 01	Administration of Professional Personnel (3)	First
Ed 491 SF 01	Literature for Early Childhood (3)	First	Ed 590 01	Administrative Internship I (3)	8-Week
Ed 491 SG 01	Symposium on Alcoholism (3)	June 21-July 2	Ed 591 01	Administrative Internship II (3)	8-Week
Ed 491 SH 01	Sociology of Education (5)	First	Ed 592 01	Administrative Internship III (3)	8-Week
Ed 492 SA 01	Scriptural Background for Religion Teachers (3)	June 21-25	Ed 593 01	School Business Office (3)	Second
Ed 492 SB 01	Peace Education in Elementary School (3)	June 28-July 2	Ed 596 01	Administrative Graduate Project (3)	8-Week
Ed 492 SC 01	Elementary Language Arts Methods: Spelling (1)	June 21-25	Ed 597 50	Administration Independent Study (1-3)	8-Week
Ed 492 SD 01	Elementary Language Arts Methods: Creative Writing (1)	June 28-July 2	Ed 600 01	Workshop in Educational Leadership (9)	Second
Ed 492 SE 01	Elementary Language Arts Methods: Oral Expression (1)	July 6-9	Ed 604 01	Workshop in Organizational Development and Change (3)	First
Ed 492 SF 01	Elementary Language Arts Methods: Listening Skills (1)	July 12-16	Ed 605 50	Independent Study in Educational Leadership (1-5)	8-Week
Ed 492 SG 01	The Complete English Teacher (3)	August 2-13	Ed 606 50	Independent Study in Educational Leadership (1-5)	8-Week
Ed 492 SH 01	Secondary Methods in Learning Disabilities (3)	Second	Ed 607 50	Independent Study in Educational Leadership (1-5)	8-Week
Ed 493 SA 01	Student Motivation and Positive Discipline (3)	August 2-6	Ed 608 50	Internship in Educational Leadership (1-9)	8-Week
Ed 493 SB 01	Montessori for Teachers and Parents (3)	June 21-July 2	Ed 610 50	Doctoral Project in Educational Leadership (1-14)	8-Week
Ed 493 SC 01	Leadership Models of Change (3)	July 19-30	ENGINEERING		
Ed 493 SD 01	Parent-Teacher Conferencing (3)	August 2-13	Civil Engineering		
Ed 493 SE 01	Special Topics in Elementary School Math: Problem Solving (1)	July 19-23	ECL 208 01	Man and Environment I (5)	8-Week
Ed 493 SF 01	Special Topics in Elementary School Math: Diagnosing Learning Problems in Math (1)	July 26-30	ECL 321 01	Fluid Mechanics (5)	8-Week
Ed 493 SG 01	Special Topics in Elementary School Math: Creative Practice (1)	August 2-6	Mechanical Engineering		
Ed 493 SH 01	Special Topics in Elementary School Math: Computers (1)	August 9-13	EML 105 01	Engineering Graphics and Analysis (5)	8-Week
Ed 493 SJ 01	Alternative Futures for Education (3)	Second	EML 113 01	Statics (5)	8-Week
Ed 500 01	Introduction to Research and Graduate Study (3)	First	EML 281 01	Dynamics (5)	8-Week
Ed 501 01	Philosophy of Education (3)	First	EML 321 01	Engineering Thermodynamics (5)	8-Week
Ed 507 01	Principles of Educational Law (3)	First	Software Engineering		
Ed 508 01	Politics, Policy, and Education (3)	June 21-July 2	ESW 508 01	Technical Communication (3)	8-Week
Ed 510 01	Fundamental Counseling Skills (3)	8-Week	ESW 586 01	Software Engineering Lab II (3)	Arranged
Ed 512 01	Informational Sources in Counseling (3)	First	ESW 596 53	Independent Study (3)	Arranged
Ed 513 01	Counseling Theories (3)	8-Week	ENGLISH		
Ed 515 01	Multicultures (3)	Second	En 110 01	Freshman English (5)	7-Week
Ed 517 01	Group Counseling and Practice (3)	8-Week	En 132 01	American Literature (5)	7-Week
Ed 522 01	Child Psychology and Learning (3)	First	En 133 01	World Literature (5)	7-Week
Ed 523 01	Adolescent Psychology and Learning (3)	First	En 203 01	Vocabulary (5)	7-Week
Ed 527 01	Counseling Tests and Measurements I (3)	8-Week	En 250 01	Practical Criticism (5)	7-Week
Ed 532 01	Field Practicum in Reading (6)	First	En 264 01	English Authors I (5)	8-Week
Ed 534 01	Seminar-Teaching of Reading (3)	First	En 266 01	English Authors III (5)	7-Week
Ed 535 01	Reading in the Content Fields (3)	Second	En 391 SA 01	Reading and Writing the Short Story for Pleasure and Profit (5)	7-Week
Ed 536 01	Supervision of Instruction (3)	First	En 391 SB 01	Shakespeare in Ashland (5)	June 21-July 10
Ed 537 50	Curriculum Independent Study (1-4)	8-Week	En 391 SC 01	Literature of the Emerging Nations (5)	7-week
Ed 538 01	Curriculum Graduate Project (3)	8-Week	FINE ARTS		
Ed 540 01	Fundamentals of Curriculum Development (3)	First	FA 103 01	Fine Arts — Music (5)	7-Week
Ed 541 01	Advanced Seminar on Teaching (3)	August 2-13	FA 491 SA 01	Integration of Abilities (5)	First
Ed 543 01	Corrective Techniques in Teaching of Reading (3)	Second	Art		
Ed 547 01	Diagnosis and Prescription (3)	8-Week	Art 221 01	Drawing (2)	7-Week
Ed 551 01	Counseling Practicum (4)	8-Week	Art 222 01		
Ed 552 01	Learning Disabilities: Special Methods (3)	Second	Art 223 01		
Ed 553 01	Gifted Education: Methods (3)	July 19-30	Art 314 01	History of Art (5)	7-Week
Ed 555 50	Practicum: Special Education (3-6)	8-Week	Art 334 01	Graphics (2)	7-Week
Ed 557 50	Counseling Independent Study (1-3)	8-Week	Art 335 01		
Ed 559 01	Counseling Graduate Project (3)	8-Week	Art 336 01		
Ed 560 01	Family Counseling (3)	8-Week	Art 346 01	Painting (2)	7-Week
Ed 561 SA 01	Seminar in the School Superintendency (3)	July 19-23	Art 347 01		
Ed 561 SB 01	Counseling Continuing Certification (3)	First	Art 348 01		
Ed 562 SA 01	Psychology of Adult Development (3)	Second	Art 351 01	Sculpture (2)	7-Week
Ed 563 01	The School Administrator and Practical Politics (3)	June 28-July 2	Art 352 01		
Ed 564 01	Counseling Internship I (4)	8-Week	Art 353 01		
Ed 565 01	Counseling Internship II (4)	8-Week	Art 370 01	Arts and Crafts (5)	First
Ed 566 01	Counseling Internship III (3)	8-Week	Art 491 SA 01	Japanese Woodblock (2)	First
Ed 580 01	Building Positive Staff Relations (3)	July 19-30	Art 491 SB 01	Japanese Calligraphy (2)	Second
Ed 581 01	Fundamentals of Administration (3)	First			

Drama

Dr 291 SA 01	Beginning Modern Dance I (3)	First
Dr 291 SB 01	Beginning Modern Dance II (3)	First
Dr 291 SC 01	Beginning Ballet I (3)	First
Dr 291 SD 01	Beginning Ballet II (3)	First
Dr 291 SE 01	Jazz I (2)	First
Dr 291 SF 01	Rhythmic Exercise (3)	First
Dr 291 SG 01	Aerobic Dance (3)	First
Dr 391 SA 01	Intermediate Modern Dance (3)	First
Dr 391 SB 01	Jazz II (2)	First
Dr 491 SA 01	Advanced Modern Dance (3)	First
Dr 491 SB 01	Dance Repertory (2)	First

Music

Mu 110 SA 50	Piano Lessons (1-2)	7-Week
Mu 110 SB 50	Piano Lessons (1-2)	7-Week
Mu 111 50	Vocal Lessons (1-2)	7-Week
Mu 114 01	Music Fundamentals (5)	First
Mu 120 50	Violin Lessons (1-2)	7-Week
Mu 125 50	Organ Lessons (1-2)	7-Week
Mu 126 50	Flute Lessons (1-2)	7-Week
Mu 291 SB 01	Guitar Survey (2)	First
Mu 291 SC 01	Beginning Voice Class (1)	7-Week
Mu 291 SD 50	Classical Guitar Lessons (1-2)	7-Week

FOREIGN LANGUAGES

Fr 115 01	French I, II, III (15)	7-Week
Fr 125 01		
Fr 135 01		
Gr 115 01	German I, II, III (15)	7-Week
Gr 125 01		
Gr 135 01		
Sp 115 01	Spanish I, II, III (15)	7-Week
Sp 125 01		
Sp 135 01		

GENERAL SCIENCE

ISC 391 SA 01	Geology and Mineralogy of the Pacific Northwest (2)	8-Week
ISC 392 SA 01	Field Ecology of Washington (2)	8-Week

HEALTH INFORMATION SERVICES

HI 492 SA 01	Designing Computer Applications in Patient Information Systems (1)	June 21-July 1
--------------	--	----------------

HISTORY

Hs 100 01	Origins of the Modern World (5)	7-Week
Hs 105 01	Western Civilization II (5)	7-Week
Hs 231 01	Survey of the United States (5)	7-Week
Hs 281 01	Survey of the Far East (5)	7-Week
Hs 339 01	Recent United States (5)	7-Week
Hs 341 01	The Pacific Northwest (5)	7-Week
Hs 492 SA 01	Leadership in History: Orient and West (5)	July 19-Aug. 1

MATHEMATICS

Mt 112 01	College Algebra/Trigonometry (5)	7-Week
Mt 118 01	College Algebra for Business (5)	7-Week
Mt 130 01	Elements of Calculus for Business (5)	7-Week
Mt 175 01	Mathematics for the Liberal Arts Student (5)	7-Week
Mt 200 01	Theory of Arithmetic (5)	7-Week
Mt 233 01	Multivariable Calculus and Linear Algebra (5)	7-Week

MILITARY SCIENCE

MS 292 SA 01	Basic Course Equivalent (5)	Arranged
MS 296 50	Independent Study (1-5)	Arranged

PHILOSOPHY

Pl 110 01	Philosophical Problems: World (5)	7-Week
Pl 110 02	Philosophical Problems: World (5)	7-Week

Pl 220 01	Philosophical Problems: The Human Person (5)	7-Week
Pl 220 02	Philosophical Problems: The Human Person (5)	7-Week
Pl 220 03	Philosophical Problems: The Human Person (5)	7-Week
Pl 250 01	Ethics (5)	7-Week
Pl 250 02	Ethics (5)	7-Week
Pl 252 01	Business Ethics (5)	8-Week
Pl 260 01	Logic I (5)	7-Week
Pl 391 SA 01	Plato's Republic (5)	7-Week
Pl 393 SA 01	Philosophy in Science Fiction (5)	7-Week
Pl 491 SA 01	Gender and Social Reality (5)	7-Week
Pl 493 SA 01	The Myth of Mental Illness: Foucault, Laing, and Szasz (5)	8-Week
Pl 497 50	Independent Study (1-5)	Arranged

PHYSICAL EDUCATION AND RECREATION

PE 125 01	Tennis (1)	June 21-July 1
PE 125 02	Tennis (1)	July 5-15
PE 127 01	Racquetball (1)	June 21-July 2
PE 127 02	Racquetball (1)	July 5-16
PE 352 01	Orientation to Health and P.E. — Elementary (3)	First
PE 353 01	Orientation to Health and P.E. — Secondary (3)	First
PE 484 01	The Drug Scene (3)	June 21-July 1

PHYSICS

Ph 200 01	Mechanics (5)	8-Week
Ph 201 01	Electricity and Magnetism (5)	8-Week
Ph 291 SA 01	Cosmic Evolution (5)	7-Week

POLITICAL SCIENCE

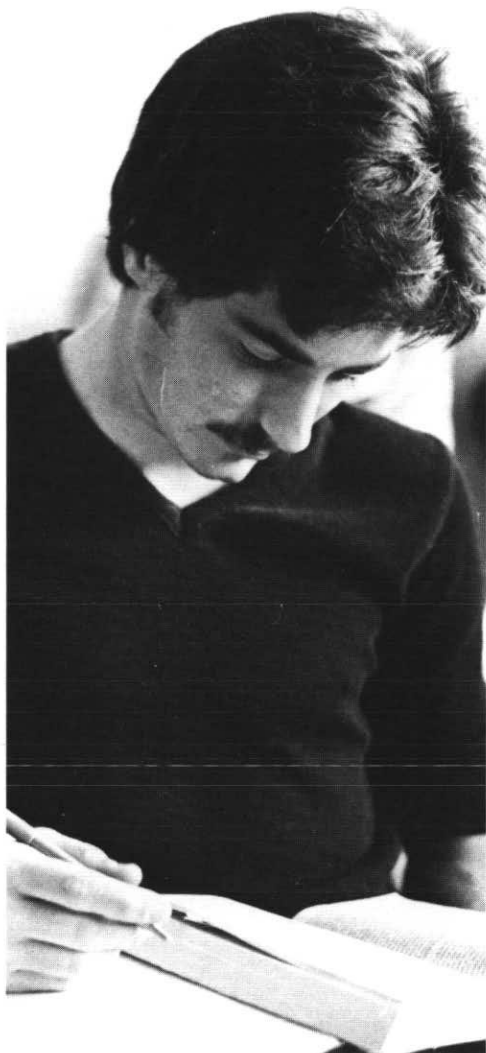
Pls 160 01	American National Government (5)	7-Week
Pls 230 01	Industrial Democracies (5)	7-Week
Pls 374 01	The American Presidency (5)	7-Week
Pls 381 01	United States Foreign Policy (5)	8-Week
Pls 385 01	Peace and the United Nations (5)	8-Week
Pls 496 50	Independent Study (2-5)	Arranged

PSYCHOLOGY

Psy 100 01	Introduction to Psychology (5)	7-Week
Psy 201 01	Statistics (5)	7-Week
Psy 210 01	Personality Adjustment (5)	7-Week
Psy 296 01	Independent Study	Arranged
Psy 315 01	Abnormal Psychology (5)	7-Week
Psy 322 01	Psychology of Growth and Development (5)	7-Week
Psy 461 01	Theory of Group Dynamics (2)	First
Psy 462 01	Experience of Group Dynamics (3)	
Psy 490 01	Symposium on Alcoholism (3)	June 21-July 1
Psy 491 SA 01	Psychology of Depression (5)	7-Week
Psy 496 50	Independent Study (2-5)	Arranged

PUBLIC SERVICE

Pub 340 01	Issues in Human Resources (5)	8-Week
Pub 491 SA 01	Life-Work Planning (1)	July 30, 31
Pub 491 SB 01	The Training Function (1)	July 9-23
Pub 493 SA 01	Economic Stagnation (1)	June 27-Aug. 8
Pub 495 50	Internship (1-5)	Arranged
Pub 497 50	Independent Study (1-5)	Arranged
Pub 535 01	Program Evaluation (3)	8-Week
Pub 542 01	Public Personnel Management (3)	8-Week
Pub 580 01	Administrative Behavior in Public Organizations (3)	8-Week
Pub 585 01	Management of Change (3)	June 25, 26
Pub 586 01	Thesis Preparation (1)	June 25
Pub 588 01	Thesis (4)	Arranged
Pub 592 SA 01	Professional and Academic Writing (3)	8-Week
Pub 592 SB 01	Oral Communication for Administrators (3)	8-Week
Pub 595 50	Internship (1-5)	Arranged
Pub 597 50	Independent Study (1-5)	Arranged



REHABILITATION

Rhb 210 01	Field Experience (5)	Arranged
Rhb 310 01	Field Experience (5)	Arranged
Rhb 410 50	Field Experience (5-15)	Arranged
Rhb 425 01	Grief Work in Rehabilitation (3)	First
Rhb 491 SA 01	Alcohol/Drug Abuse and Disabled Person (3)	July 19-30
Rhb 492 SA 01	Private Sector Testing (3)	8-Week
Rhb 493 SA 01	Ethics in Rehabilitation (3)	8-Week
Rhb 493 SB 01	Seminar in Private Rehabilitation Practice (3)	8-Week
Rhb 530 01	Practicum/Rehabilitation (3)	Arranged
Rhb 531 01	Practicum/Rehabilitation (3)	Arranged
Rhb 532 01	Practicum/Rehabilitation (3)	Arranged
Rhb 580 50	Internship/Rehabilitation (1-6)	Arranged

SOCIOLOGY

Sc 101-01	Fundamentals of Sociology (5)	7-Week
Sc 266 01	Interracial and Interethnic Relations (5)	7-Week
Sc 280 01	Urban Community (5)	7-Week

SPEECH

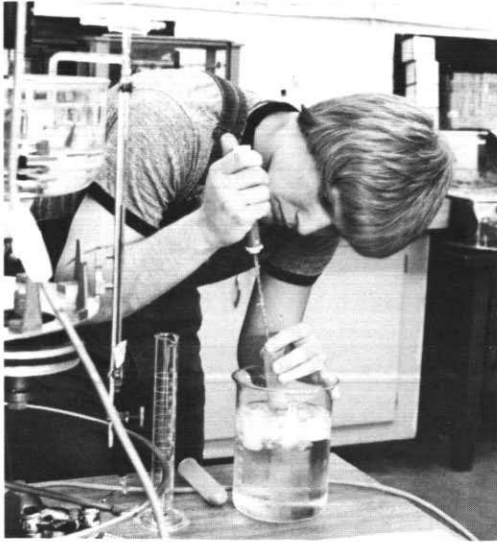
Sph 200 01	Interpersonal Communications (5)	7-Week
------------	----------------------------------	--------

SUMORE — Graduate Classes

RS 502 01	Religious Perspectives in Psychology (2)	July 6-16
RS 505 01	Sacramental Theology (3)	June 21-July 2
RS 506 01	Communication Workshop: Interpersonal Communication Skills (2)	June 21-July 2
RS 507 01	Communication Workshop: Conflict Resolution (2)	June 21-July 2
RS 508 01	Communication Workshop: Communication and Processes (2)	June 21-July 2
RS 510 01	Theology and the New Testament (3)	July 6-16
RS 513 01	Foundations of Pastoral Ministry (3)	August 2-13
RS 514 01	Foundations of Religious Education (3)	August 2-13
RS 517 01	Adult Religious Learning (3)	July 6-15
RS 522 01	Youth and Young Adult Religious Development (3)	July 19-30
RS 540 01	Christian Self-Image (2)	June 23-July 2
RS 545 01	The Church As Historically Developing Community (3)	July 19-30
RS 553 50	Pastoral Counseling (2-3)	July 19-Aug. 5
RS 560 01	Practicum I for Religious Education (2)	July 6-15
RS 561 01	Practicum II for Religious Education (2)	July 6-16
RS 562 50	Practicum III for Religious Education (2-4)	Arranged
RS 563 01	Practicum I for Pastoral Ministry (2)	July 6-15
RS 564 01	Practicum II for Pastoral Ministry (2)	July 6-16
RS 565 50	Practicum III for Pastoral Ministry (2-4)	Arranged
RS 580 01	Graduate Project (3)	Arranged
RS 590 SA 01	Spirituality and Justice (3)	July 6-15
RS 590 SB 01	Prayer (2)	July 19-29
RS 590 SC 01	American Religious Experience (2)	Aug. 2-13
RS 590 SD 01	Scripture (2)	July 19-29
RS 590 50	Independent Study (1-5)	Arranged

THEOLOGY/RELIGIOUS STUDIES

RS 200 01	Judaeo-Christian Origins (5)	7-Week
RS 215 01	Johannine Theology (5)	7-Week
RS 240 01	Prophetic and Wisdom Literature of the Old Testament (5)	7-Week
RS 320 01	Fundamental Themes in Theology (5)	7-Week
RS 344 01	Church As Community (5)	7-Week
RS 433 01	Theology of Human Sexuality and Marriage (5)	7-Week
RS 450 01	Theology of Liberation (5)	7-Week



OF SPECIAL INTEREST

ALCOHOL STUDIES

**First Annual
Alcohol Studies/Rehabilitation Summer Institute
Alcoholism, Drug Abuse and the Disabled Person
Alc 409 SC 01, 3 credits
July 19-30, Daily, 9:00 a.m.-3:30 p.m.**

An intensive two-week program emphasizing evaluation and service delivery to the disabled person who has a history of alcohol and/or drug abuse. Special emphasis on the injured worker and the role of the medical system in creating drug dependency. Enrollment is limited. Stipends may be available. For more information contact: Hutch Haney, 626-5788 or Jerry Schnell, 626-6498.

ONE-WEEK COURSES

**Telephone Therapy
Alc 409 SA 01, July 12-16, 1 credit**

**Agency Administration
Alc 404 01, July 12-16, 2 credits**

TWO-WEEK COURSES

**Symposium on Alcoholism
Alc 400 01 (Psy 490), 3 credits**

This 33rd annual Symposium on Alcoholism will emphasize multiple drug ("polydrug") abuse and young people. J.E. Royce, S.J., Ph.D. and J.V. Schnell, Ph.D. June 21-July 2.

**Resource Development for Agencies and Schools
Alc 409 SE 01, 2 credits**

New course on locating and utilizing resources for alcohol and drug agencies and schools and compiling and using resource files. June 21-July 2.

FOUR-WEEK COURSE

**Sexuality for Alcoholism Counselors
Alc 409 SD 01, 1 credit, Tuesday, June 22-July 13**

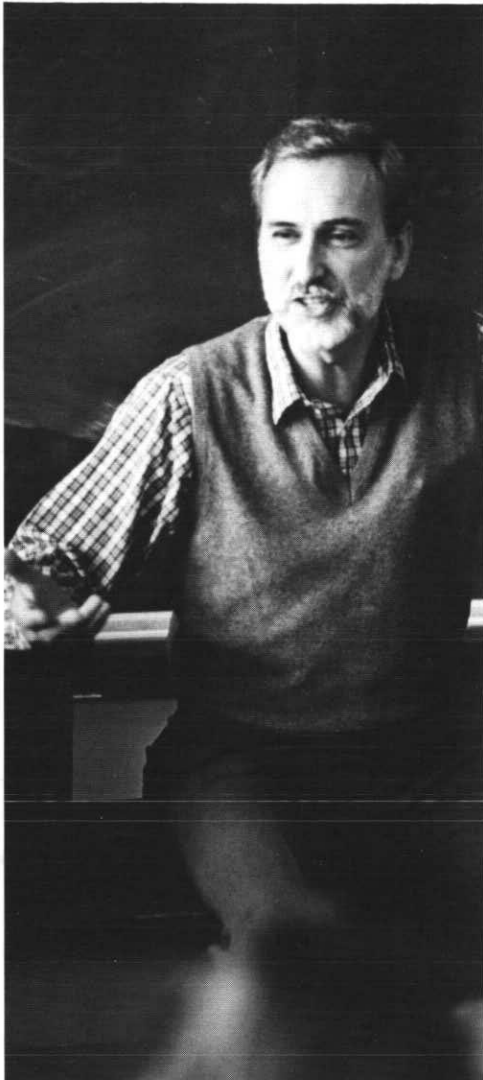
EIGHT-WEEK COURSE

**Cross-Cultural Counseling
Alc 406 01, 2 credits, Monday, June 21-August 13**

ENGLISH

**Literature of the Emerging Nations
En 391 SC 01, 5 credits**

This course will draw attention to the old problem, the changes and the new attendant problems, and the aspirations for the future of the Third World. The class will read and discuss literary works by representative authors from Third World countries. Through these literary expressions of the anguish and the hope of the Third World peoples, we may become more aware of the different reality which the Third World faces and needs to understand.



OF SPECIAL INTEREST

Shakespeare in Ashland

En 391 SB 01, 5 credits, June 21-July 10

Following one week of classes on the Seattle University campus, the course moves to the Ashland, Oregon, Shakespeare Festival for two weeks. In Ashland, we will continue classes, attend eight plays, discuss the production with directors and leading actors from the company, and participate in a variety of activities provided by the Festival's Institute of Renaissance Studies, which co-sponsors this course.

Fees include: Festival Fee, for play tickets, backstage tour, class visits by actors, "Festival Noons" programs, and various services of the Institute (approx. \$115); and room and board on the campus of Southern Oregon College (several plans are available). Each student provides transportation to and from Ashland.

For further information, contact Professor William Taylor, English Department. A place in the class must be reserved no later than May 14. Enrollment is limited to 20. Permission of instructor required.

FINE ARTS

Japanese Woodblock Art

Art 491 SA 01, 2 credits, June 21-July 16

Japanese Calligraphy

Art 491 SB 01, 2 credits, July 19-August 13

Two courses in Japanese art forms, woodblock and calligraphy, taught by Midori Kono Thiel, an artist and expert in traditional and contemporary Japanese art forms. Woodblock, employing a variety of colors and woods, includes carving, preparation of papers, and the printing process. Calligraphy will develop the aesthetics, history, and techniques of this art form.

Dance Repertory

Dr 491 SB 01, 2 credits, June 21-July 16

Towards development of performance skills, repertory pieces will be taught to students, and performed informally at the end of the course.

Guitar Survey

Mu 291 SB 01, 2 credits, June 21-July 16

An overview and development of guitar fundamentals including notation, history, ensemble, folk styles, and reading skills.

PHILOSOPHY

Plato's Republic

Pl 391 SA 01, 5 credits

A study of Plato's world view, theory of knowledge, ethics, and political philosophy through a close reading and discussion of the dialogue. Students and instructor will analyze and criticize this classic work within its own context and in its relationship to contemporary issues. This course requires active student participation.



OF SPECIAL INTEREST

Philosophy in Science Fiction

PI 393 SA 01, 5 credits

Science fiction, like philosophy, begins in wonder. Science fiction shares a special kinship to philosophy because, like philosophy, it challenges our ordinary ideas about the nature of ourselves and our universe. In this course we will study a variety of philosophical problems that are raised in contemporary science fiction, such as the paradoxes of time travel, whether machines can be human, and whether aliens could accept our moral values.

Gender and Social Reality

PI 491 SA 01, 5 credits

A multidisciplinary inquiry into the social and psychological reality of past and present gender roles, together with an attempt to describe future possibilities. Students will read, discuss, view films, engage in structured exercises, and consider questions about humanness and human values.

The Myth of Mental Illness: Foucault, Laing and Szasz

PI 493 SA 01, 5 credits

This course will examine the Western concept of madness and its treatment, with special historical emphasis on the origin of the concept of "mental illness." We will begin with an overview of the idea of madness from the Greeks to the Age of Reason, then look at how madness becomes transformed during the age of reason in Foucault's *Madness and Civilization*. Szasz's historical account of the birth of the idea of "mental illness" in the late nineteenth century will serve as the foundation for our look at present practices of treatment of the so-called "mentally ill." In addition, we will look at some texts of the mental health movement as well as its history in the United States, and an alternative way of understanding madness as presented by R.D. Laing.

POLITICAL SCIENCE

United States Foreign Policy

Pls 381 01, 5 credits

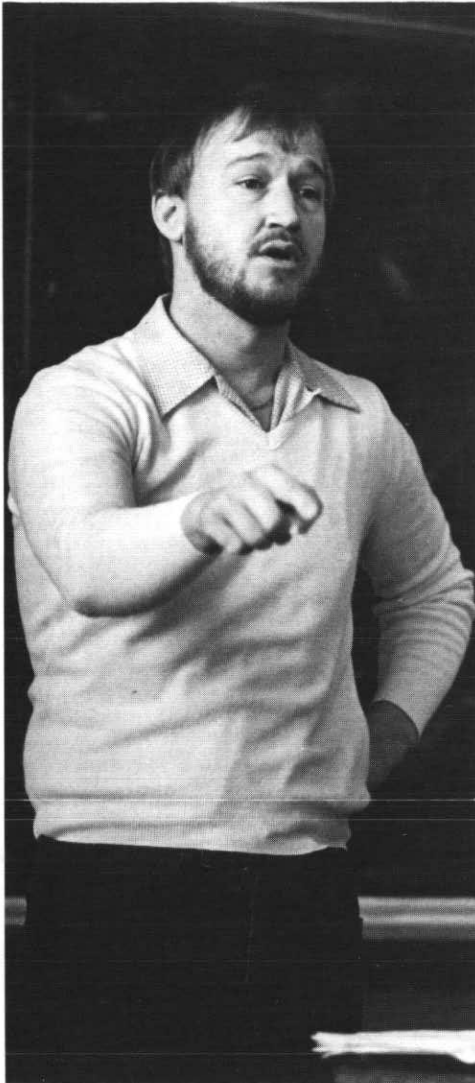
The present decade is marked by a profound shift in the world distribution of economic and military power. Can the U.S. retain its "special mission" as it is becoming an "ordinary country"? How do special interest groups, conservative bureaucracies, partisan politics, and popular values prohibit America's adjustment to the age of interdependence? Myths and realities in U.S. relations with the Soviet Union, the Middle East, and the underdeveloped nations.

PSYCHOLOGY

Psychology of Depression

Psy 491 SA 01, 5 credits

Examination of the experiences and behaviors of depression, the factors which give rise to this mood disorder, and of several theories and treatment approaches to depression with major emphasis on therapeutically effective intervention. Seminar format.



OF SPECIAL INTEREST

PUBLIC SERVICE

Introduction to Human Resources **Pub 340 01, 5 credits**

Examination of relationship between worker and working environment, including factors affecting human development and employability. Investigation of fields of personnel, training and development, employment and training, labor and industrial relations.

Program Evaluation **Pub 535 01, 3 credits**

Public administrators must be concerned with the performance of public programs. Whether federal, state, local, private non-profit or private profit, the questions arise: What is this program achieving? Why? At what cost? Each student will develop a thorough understanding of evaluation concepts and working competence with evaluation methods.

Management of Change **Pub 585 01, 3 credits**

The future as the realm in which we can act. Forecasting techniques, strategic planning methods, and trend extrapolation tools will be examined and used during class meetings. Topics: tragedy of the commons, diffusion theory, Sicilian Mafia, Los Angeles, French Revolution.

Professional and Academic Writing **Pub 592 01, 3 credits**

For those who seek proficiency at a more advanced level, the Institute offers a new course designed to provide intensive exploration of techniques and processes required for writing of graduate-school quality as well as close criticism of individual written work. Assignments will be tailored to the skill level and academic and professional direction of each participant.

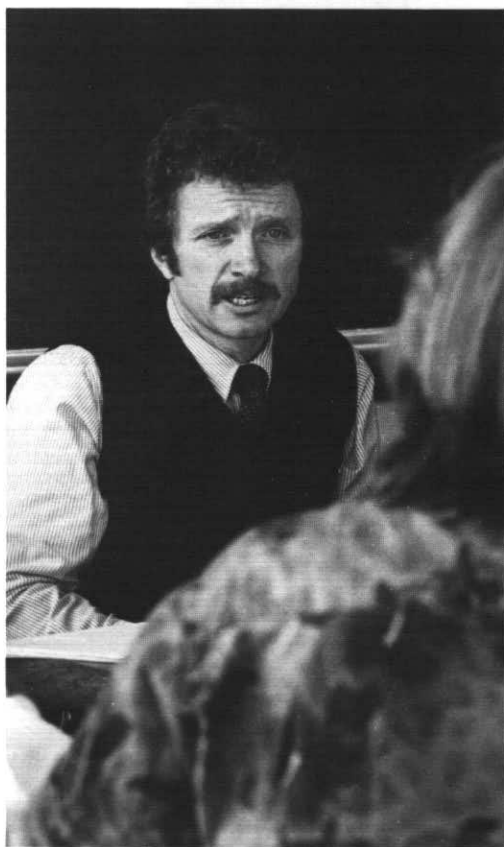
Oral Communication for Administrators **Pub 592 01, 3 credits**

Practicum in use of oral communications by those who are or expect to be in administrative positions. Participants will chair meetings, present reports, discuss policies, debate alternatives, give speeches; experience the range of formal oral communication in modern organizations. Some theory but emphasis on doing; learning tools of effective presentation through usage.

SUMORE PROGRAM

SUMORE is a graduate program leading to a Master's degree in ministry or religious education. Over three summers, the program offers an integrated approach to personal, professional, and academic growth. Non-degree students are welcome to take courses, with the permission of the Director. Of particular interest: Christian Self-Image (Dr. Tom Francoeur), Adult Religious Learning (Dr. Clarence Snelling), Youth and Young Adult Ministry (Fr. Don Kimball), Spirituality and Ministry (Dr. Anthony Padovano), Justice Spirituality (Sr. Marjorie Tuite).

Beginning this summer SUMORE will offer a new program of graduate studies in the area of spirituality. The Spirituality and Ministry program combines the integrated course offerings of SUMORE with a pastoral approach to the area of spirituality. Students share the same Core courses as regular SUMORE students. They are able to choose one of two courses of study: a three-summer plan which involves a series of electives in spirituality or a four-summer plan which includes a 30-day Directed Retreat experience. For further information call or write the SUMORE office.



ACADEMIC INFORMATION

Admission — Those who wish to be regular students and obtain regular academic credit during the Summer Quarter must make formal application to the University. Application forms may be obtained from the Admissions Office or you may use the form at the back of this Bulletin. Applications and transcripts must be on file by June 18.

Readmission — Former students not enrolled at the University for the Spring Quarter must apply for readmission if they wish to attend the Summer Quarter. Graduates who have not attended since receiving their degrees will be readmitted as fifth year students unless pursuing a Master's or Doctoral degree, in which case the student must file for admission to Graduate School.

Registration — Two registration options are offered: advance registration May 3-14, or registration immediately preceding the session/term. (See registration dates on page 3). These registration options are open to students continuing from Spring term and to new and readmitted students. New and readmitted students, however, may not register until they have filed for admission and obtained mail confirmation of approval to register.

Auditor — Admission as an auditor must be requested through the Admissions Office and be approved by the dean of the school and the instructor of the course. An auditor will not be required to participate in class discussion or laboratory work. Assignments may be at the discretion of the instructor.

Alumni Audit — Undergraduate classes are open for non-academic audit to Seattle University alumni at \$35.00 per class. The following restrictions apply: 1) the student may not be currently enrolled as a regular student at Seattle University; 2) no credit will be given nor academic record maintained; 3) the classes offered for alumni audit are open on a space-available basis. The requirements for work and class participation are at the discretion of each instructor. Fees and applications for summer alumni audit must be received at the Alumni House no later than June 25, the fifth day of class. No refunds will be made after that date. For further information write Alumni House, Seattle University, Seattle, WA 98122, or call (206) 626-5656.

Graduate Courses — Restrictions: Enrollment in graduate courses (500-699) is restricted to those holding status of "graduate student" (Level=G1 or G3) which indicates full admission to the Graduate School to pursue a Master's or Doctoral program. Students holding 5th year status (Level=5Y) are not eligible to enroll in courses numbered 500-699 without permission of the Director of the Graduate Program.

Credit — A full quarter's credit (10-15) hours may be earned during the summer.

Records — The policy of Seattle University on the right of students' access to their educational records and on confidentiality of information conforms to current public law. The full statement of policy is available for inspection in the Office of the Vice President for Academic Affairs or the Registrar.

Equal Opportunity — Seattle University offers the opportunities and experiences of higher education to all students equally without regard to race, religion, age, sex, or national origin. It does so in keeping with the guidelines and requirements of laws and regulations as promulgated by state and federal agencies.



REGISTRATION

ADVANCE REGISTRATION — MAY 3-14

Continuing students require no clearances for advance registration; the procedure is simply to prepare a program of study approved by an adviser during the May 3-14 period, and to present the signed form at the Registrar's Office during regular office hours. A fee statement will be issued shortly after this process is completed.

New and readmitted students who obtain mail notification approval to register before May 14 will follow the same procedures as continuing students:

- Consult with department adviser and prepare a program of study on the schedule form. Adviser will be available during registration hours.
- Present the approved schedule form at the Registrar's Office during regular hours, 8:30 a.m. to 4:00 p.m., through May 14, and evenings until 7:00 p.m. May 5 and 11. You will be registered at the Registrar's Office.
- Pay tuition and fees to the Controller during regular office hours through June 21.

REGISTRATION

Continuing, new, and readmitted students who do not advance register may register between June 17 and June 21 by presenting an adviser-approved schedule form to the Registrar during regular office hours, or from 4:00 to 7:00 p.m. on Thursday, June 17. Those who do not register by 4:00 p.m. on Friday, June 18, may register the first day of class (June 21). New and readmitted students register between 8:30 a.m.-12:00 noon; continuing students will register between 2:00-7:00 p.m.

Course Changes — Additions and drops for full and first term courses are permitted June 17 to June 25. No program changes may occur after June 25. Drops and additions for short term classes are permitted only for the first two class days of these classes.

Withdrawal — The Registrar's Office must be officially notified when a student withdraws from one or more of his/her courses. See the calendar for withdrawal closing dates for full and short term courses. After closing dates no withdrawals are permitted, and a grade of E or NC will be assigned.

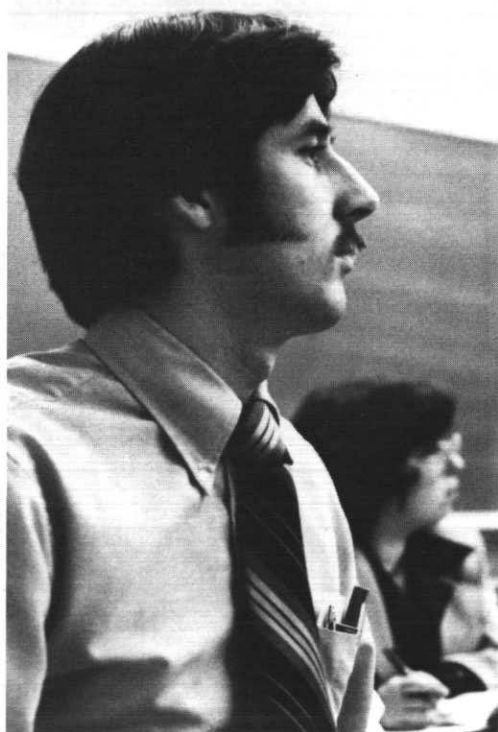
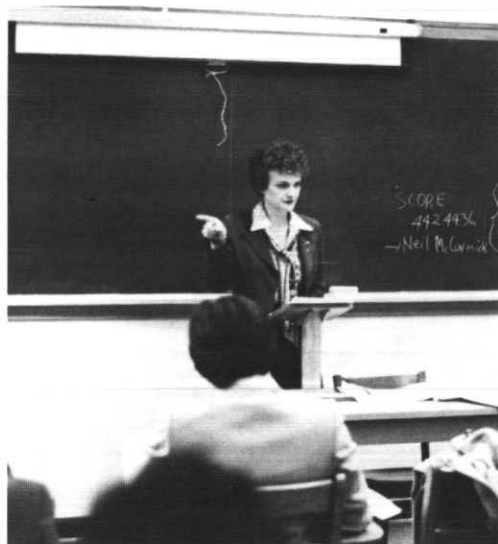
Grades — will be mailed to all students within two weeks of the end of Summer Quarter.

LIBRARY HOURS

Summer library hours for the A.A. Lemieux Library will be from 8:00 a.m. to 11:00 p.m. Monday through Thursday; Friday from 8:00 a.m. to 5:00 p.m.; Saturday from 9:00 a.m. to 5:00 p.m.; and Sunday from 1:00 p.m. to 11:00 p.m. The reading room on the first floor will be open every day from 7:00 a.m. to midnight. Holiday hours will be posted during the quarter. The library reserves the right to adjust the posted times as necessary.

BOOK STORE

The Book Store is your source for all required textbooks and course-related supplies. In addition, it offers a complete selection of general paperback books and reference books. The store features a wide selection of sweat-shirts, T-shirts and gift items with Seattle University imprinting. Other sections include greeting cards, snack foods and sundries. You may special order any book not in stock, leave your film for processing, and sell your used books at the end of the quarter. If you have any questions, call (206) 626-5925.



FINANCIAL INFORMATION

Tuition & Fees

POLICY — Tuition Payment

Payment of tuition and fees includes library and health service fees, student newspaper, student organization allotments, building fund, and admission to athletic events. After a student registers for a course, the University has committed a space in each course(s) for each student. It is the student's responsibility to pay for all fees in full whether the student attended the course(s) or not. Fees are due and payable on or before the first day of class unless the student has formally withdrawn prior to that date. Payments made after that date are subject to the late registration and refund policies.

Failure to pay in full all tuition and fees of any quarter or session may result in a hold on the student's transcript and may prevent registration in subsequent quarters.

POLICY — Late Registration

Late registration fees of \$10 per day to a maximum of \$50 are charged if tuition and fees are not paid in full as of the first day of class. Late registration fees shall apply to all checks not honored by banks and returned to Seattle University.

Although Seattle University reserves the right to change its charges at any time without prior notice, after the beginning of a quarter no change will be made effective for that quarter.

Undergraduate courses —
per credit hour \$83.00

Undergraduate Education courses —
per credit hour 70.00

Masters Programs — per credit hour

Business 130.00

CORPUS 95.00

Education 70.00

Public Administration 110.00

Psychology 110.00

Rehabilitation 110.00

Software Engineering 120.00

SUMORE 70.00

Transportation Engineering ... 110.00

Education Specialist Programs —
per credit hour 70.00

Doctoral Program — per credit hour
Doctor of Education 135.00

Certificate Programs — per credit hour

Alcohol Studies 65.00

CORPUS 95.00

Health Information 83.00

Human Resources 83.00

Rehabilitation 95.00

Transportation Engineering ... 110.00

Alcoholism/Rehabilitation

Summer Institute 65.00

Auditors Tuition — per credit hour

..... 30.00

Doctor of Education 135.00

Alumni Audit Program —
per course 35.00

Occasional Fees (non-refundable)

Application, undergraduate and graduate 15.00

Application, transient students .. 10.00

Late Registration, per day 10.00

Matriculation, undergraduate and graduate 35.00

Credit by examination (per credit hour) 30.00

Validation of field experience (per credit hour) 25.00

Removal of Incomplete (per course) 10.00

Graduation, undergraduate (per degree) 30.00

Graduation, graduate (per degree) 55.00

Graduation fees are due at the time of application for graduation, and graduation forms will be released only upon presentation of a receipt.

Certificate Fee 20.00

Music 110, 111, 120, 125, 126, 291 95.00

For laboratory fees and other occasional fees, consult the 1981-82 Seattle University Bulletin of Information, page 8.

REFUNDS

Refunds are based on the number of class days, defined as consecutive Mondays through Fridays, beginning the first day of class for each session. The refund policy applies to complete withdrawals or reduction in class



load. The official date of withdrawal from a course is considered to be the date a student submits the withdrawal or change form to the Registrar. A refund to a financial aid recipient is applied first to the student's financial aid source(s) and the balance, if any, is remitted to the student. Financial Aid recipients will, therefore, in all likelihood, not receive refunds.

If the tuition and/or fees have not yet been paid, the portion normally not refunded is due and payable together with the late fee. Failure to pay the non-refundable tuition and fees may result in transcript holds and may prevent registration in subsequent quarters.

Withdrawal (full or partial)

Full 7-week or 8-week Session	
Through first 7 class days	80%
8th through 12th class day	60%
13th through 15th class day	40%
Thereafter	No refund

Half Session

Through first 5 class days	70%
6th through 10th class day	35%
Thereafter	No refund
Shorter Sessions	No refund

FINANCIAL AID

During Summer Quarter, loans and Work-Study employment are available. Students desiring long-term loans must apply for a Guaranteed Student Loan approximately eight weeks prior to registration to ensure the availability of funds when tuition is due on registration day.

Students who have established Work-Study eligibilities for the preceding academic year may continue to utilize that eligibility through June 30, 1982. Students who have Work-Study eligibility for the 1982-83 academic year may utilize that eligibility beginning July 1, 1982.

Grants are not offered for the summer session. The Career Planning and Placement Office maintains a listing of both on and off-campus jobs. For specific information, contact the Financial Aid Office, Seattle University, Seattle, WA 98122.

HOUSING

Room and Board (21-Meal Plan)

First Term: June 21-July 16	\$315.00
Second Term: July 19-August 13	315.00
Full seven-week session: June 21-August 6	569.00
Full eight-week session: June 21-August 13	630.00

There are no on-campus living accommodations for families. Residence halls will be open June 20 at 9:00 a.m. and will close at noon on August 14. All meals will be served in Bellarmine Hall Dining Room. Regular food service meals will begin with breakfast on June 21 and end with dinner on August 13. There are no arrangements for room without board. Alternative meal plans are being discussed and, if accepted, will be announced in the Housing Office information sent to each student applying for Summer School. Blankets, pillows, and linen must be provided by each student.

1. Above fees apply to one room, double occupancy. Private rooms are available on a first-come, first-serve basis for an additional \$84.00 per term; \$147.00 for the 7-week session, and \$168.00 for the 8-week session. Requests for private rooms will be taken, but not guaranteed until June.

2. Students may opt for a 5-day meal plan, Monday through Friday. The following rates will be in effect: one term (4 weeks), \$302.00; 7-week term, \$531.00; 8-week term, \$602.00.

3. All students check out of the residence halls 24 hours after their final exam.

RESERVATIONS — Admission to the University does not automatically guarantee room reservations. Requests for student housing are made through the Director for Resident Student Services. No deposit is required.

PARKING

Campus parking permits can be purchased at the Book Store at the time of registration.

Course/Section	Description/Credit Session/Time	Instructor Building/Room	Course/Section	Description/Credit Session/Time	Instructor Building/Room
----------------	---------------------------------	--------------------------	----------------	---------------------------------	--------------------------

SCHEDULE

Seattle University reserves the right to cancel any class without prior notice.

Seven-week classes are scheduled for 70-minute blocks and extend from June 21-August 6.

Eight-week classes are scheduled for 60-minute blocks and extend from June 21-August 6.

The first 4-week term will extend from June 21-July 16.

The second 4-week term will extend from July 19-August 13.

BUILDING CODE

Ba	Bannan Building
Bu	Buhr Hall
Ca	Campion Tower
CC	Connolly Center
E	Engineering Building
Ga	Garrand Building
LA	Liberal Arts Building
LL	Lemieux Library
M	Marian Hall
N	Nursing Building
NOC	Not On Campus
PDC	Pacific Dance Center
P	Pigott Building

ALCOHOL STUDIES

One-Week Courses

Alc 404 01	Agency Administration (2) July 12-16, Daily, 9:00 a.m.-3:30 p.m.	Schmidt/ Guest Lecturers P 401
-------------------	--	--

Dynamics of administration of alcoholism and drug-abuse agencies. Personnel policies, budgeting, fund-raising, office management, public relations, professional ethics. Prerequisite: Alc 400.

Alc 409 SA 01	Telephone Therapy (1) July 12-16, Daily, 4:00-6:00 p.m.	Forbes P 452
----------------------	---	------------------------

Techniques for dealing with calls for help. Crisis skills, information gathering, using resources, and making referrals by phone. Prerequisite: Alc 402.

Alc 413 01	Alcoholism Schools Workshop (2) July 6-9, Daily 9:00 a.m.-3:30 p.m.	Marshall P 404
-------------------	---	--------------------------

How to teach Alcohol Information (AIS) and DWI Schools. Prerequisite: Alc 400 or equivalent.

Alc 422 01	Alcoholics Anonymous As a Resource for Professionals (1) July 6-9, Daily, 4:00-6:30 p.m.	Staff P 452
-------------------	--	-----------------------

History, steps, traditions, psychology, and philosophy of the A.A. Program. Prerequisite: Alc 400.

Two-Week Courses

Alc 400 01	Symposium on Alcoholism (3) June 21-July 2, Daily 9:00 a.m.-3:30 p.m.	Schnell/ Guest Lecturers P 404
-------------------	---	--

Special emphasis on polydrug abuse in youth. Alcoholism: extent, nature, causes, treatment. Prerequisite to all other courses for the Basic Certificate in Alcohol Studies. Also offered under Psy 490 and Ed 491 SG 01.

Alc 405 01	Law and Alcohol (2) July 19-30, Daily 5:00-6:50 p.m.	Hoff P 456
-------------------	--	----------------------

Legal implications and consequences of alcohol-related offenses. Uniform Alcoholism and Intoxication Treatment Act. Deferred prosecution. Court structures and jurisdictions. Prerequisite: Alc 400.

Alc 409 SB 01	Women, Alcoholism and Drug Abuse (2) July 6-16, Daily, 4:00-6:00 p.m.	Keane P 405
----------------------	---	-----------------------

Special problems of female alcoholics and drug abusers in society and during recovery. Prerequisite: Alc 402.

Alc 409 SC 01	Alcoholism/Drug Abuse and the Disabled Person (3) July 19-30, Daily, 9:00 a.m.-3:30 p.m.	Haney/Schnell/ Guest Lecturers P 401
----------------------	--	--

Special two-week Institute focusing on the unique problems of alcoholics/drug abusers who are physically disabled. Prerequisite: Permission of Director. Also offered under Rbh 491.

Alc 409 SE 01	Resource Development for Agencies and Schools (2) June 21-July 2, Daily, 4:00-6:00 p.m.	Beerman P 405
----------------------	---	-------------------------

Locating and utilizing resources for alcoholism and drug abuse agencies and schools. Availability of films, books, journals, government publications, and others. Compiling and using resource files. Prerequisite: Alc 400.

Four-Week Course

Alc 409 SD 01	Sexuality for Alcoholism Counselors (2) June 22-July 13, Tuesday, 7:00-9:30 p.m.	Dawson P 452
----------------------	--	------------------------

Counseling for sexual problems encountered by alcoholics and other drug abusers during the recovery process. Prerequisites: Alc 402, 403.

Eight-Week Courses—June 21-August 13

Alc 401 01	Pharmacology/Physiology of Alcohol Use (2) Full, Monday, 7:00-9:30 p.m.	Schnell P 551
-------------------	---	-------------------------

Absorption, distribution, excretion, and metabolism. Behavioral effects and organic damage. Prerequisite: Alc 400.

Course/Section	Description/Credit Session/Time	Instructor Building/Room	Course/Section	Description/Credit Session/Time	Instructor Building/Room
Alc 402 01	Counseling Principles and Techniques (3) Full MW, 7:00-9:00 p.m. Client-counselor relationships, interview techniques, dealing with defenses and other problems peculiar to alcoholism and drug-abuse counseling. Prerequisite: Alc 400.	Riordan P 456	ALLIED HEALTH — Nuclear medicine		
Alc 402 02	Counseling Principles and Techniques (3) Full TTh, 7:00-9:00 p.m.	Huey P 455	AH 453 01	Applied Nuclear Medicine Technology (7) Arranged	Mentors NOC
Alc 403 01	Personal and Social Rehabilitation (2) Full, Tuesday, 7:00-9:00 p.m. Motivation and personality problems in the recovering alcoholic/drug abuser. Long-range sobriety, relapses, dry-drunk, family, and social adjustments. Prerequisite: Alc 400.	Dwinell P 551	AH 459 01	Nuclear Medicine Seminar IV (2) Arranged	Mentors NOC
Alc 406 01	Cross-Cultural Counseling (2) Full, Monday, 7:00-9:30 p.m. Special problems and techniques, understanding of cultural backgrounds and instruction by members of minority groups. Prerequisite: Alc 402.	Bury/ Guest Lecturers P 455	Ultrasound		
Alc 407 01	Field Experience I—Alcoholism (3) Full, Arranged Supervised work in an approved alcoholism facility. Oral and written reports. Prerequisite: Alc 402.	Bury Arr	AH 473 01	Clinical Orientation to Ultrasound (10) Arranged First Quarter of Ultrasound Clinical Internship.	Mentors NOC
Alc 408 01	Field Experience II—Alcoholism/Drug Abuse (3) Full, Arranged Supervised work in an approved alcoholism or drug-abuse facility. Oral and written reports. Prerequisite: Alc 407.	Bury Arr	AH 474 01	Clinical Experience in Ultrasound (8) Arranged	Mentors NOC
Alc 410 50	Individual Research (1-3) Full, Arranged Open only to students with sufficient academic background to pursue independent study. Permission required.	Staff Arr	AH 483 01	Ultrasound Seminar (2) 8-week, every other Wednesday 11:00 a.m.-1:00 p.m.	Skelly Arr
Alc 412 01	Group Dynamics in Treatment (2) Full, Wednesday, 7:00-9:30 p.m. Role playing, dynamics of group interactions, introduction to psychodrama. Applications to alcoholism and drug-abuse treatment. Prerequisites: Alc 402, 403 and 407.	Middleton P 455	AH 484 01	Basic Science of Ultrasound (2) Arranged Clinical Ultrasound Internship Project.	Skelly NOC
Alc 421 50	Advanced Project or Research in Alcoholism/Drug Abuse (2-5) Full, Arranged Replication, original research, or scholarly investigation which demonstrates mastery of basic fact-finding, experimental design, evaluation, and presentation of results. Permission required.	Staff Arr	BIOLOGY		
Alc 425 01	Drug Abuse II: Physiological Aspects (2) Full, Thursday, 7:00-9:20 p.m. Pharmacology and physiology of drug action. Prescription and non-prescription drugs. Interactions among drugs, polydrug abuse. Actions of drugs on the central nervous system. Prerequisite: Alc 401 and 424.	Ferguson P 551	BI 220 01	Microbiology (5) 8-week, MTThF, 10:30-11:30 a.m. Laboratory: Tuesday, 2:30-5:00 p.m. Introduction to medical microbiology.	Davis Ga 332
			BI 292 SA 01	Biological Basis of Human Sexuality (5) 8-week, Daily, 1:10-2:20 p.m. Core Option	Davis Ga 224
			BI 296 50	Independent Study (1-5) Arranged Directed study, lower division.	Staff Arr
			BI 310 01	Comparative Vertebrate Embryology (5) 8-week, MWF, 9:10-10:20 a.m. Laboratory: Monday, 1:10-5:00 p.m. Early development of the frog and chick with consideration of the human. Prerequisites: BI 165, 166, 167. Take before or with BI 492 (Comparative Anatomy).	Santisteban Ga 111
			BI 350 01	Genetics (3) 8-week, MWF, 11:50 a.m.-1:00 p.m. Classical and molecular principles of the transfer of hereditary information.	Brubaker Ga 336

Course/Section	Description/Credit Session/Time	Instructor Building/Room	Course/Section	Description/Credit Session/Time	Instructor Building/Room
Bl 351 01	Genetics Laboratory (2) 8-week, Wednesday, 1:10-5:00 p.m. Experience in genetic experimentation. Prerequisite: Bl 350 or concurrent registration in Bl 350.	Brubaker Ga 336	Bus 350 01	Introduction to Marketing (5) 8-week, Daily, 11:50 a.m.-1:00 p.m. Prerequisite: Junior standing	Staff P 306
Bl 492 SA 01	Developmental Biology: Comparative Anatomy (5) 8-week, TTh, 9:10-10:20 a.m. Laboratory: Thursday, 1:10-5:00 p.m. Comparative study of organ systems of selected vertebrates, with emphasis on their developmental relationships. Prerequisites: Bl 165, 166, 167. Take after or with Bl 310.	Santisteban Ga 111	Bus 380 01	Organization Behavior (5) 8-week, Daily, 9:10-10:20 a.m. Prerequisite: Junior standing	Staff P 354
Bl 496 50	Independent Study (1-5) Arranged Directed studies, upper division.	Staff Arr	Bus 383 01	Personnel Management I (5) 8-week, Daily, 10:30-11:40 a.m. Prerequisites: Bus 380 and Junior standing	Staff P 353
BUSINESS			Bus 410 01	Computer Based Management Information Systems (5) 8-week, Daily, 11:50 a.m.-1:00 p.m. Prerequisites: Bus 340, Mt 213 and Senior standing	Staff P 354
Bus 211 01	Business Statistics (5) 8-week, MW, 5:35-7:55 p.m. Prerequisites: Mt 130 and Sophomore standing	Staff P 306 Bus Core	Bus 480 01	Production and Operations Management (5) 8-week, Daily, 9:10-10:20 a.m. Prerequisites: Bus 211, Mt 213 and Senior standing	Staff P 306
Bus 230 01	Principles of Accounting I (5) 8-week, TTh, 5:35-7:55 p.m. Prerequisite: Sophomore standing	Staff P 351 Bus Core	Bus 482 01	Business Policy and Organization (5) 8-week, MW, 5:35-7:55 p.m. Prerequisite: Senior standing	Staff P 305 Bus Core
Bus 231 01	Principles of Accounting II 8-week, Daily, 7:50-9:00 a.m. Prerequisite: Bus 230	Staff P 351 Bus Core	Bus 492 SA 01	Advanced Accounting Practice and Theory (5) 8-week, Thursday, 11:50 a.m.-2:20 p.m. Prerequisite: Bus 333	Staff P 353
Bus 270 01	Law and Business (5) 8-week, Daily, 10:30-11:40 a.m. Prerequisite: Sophomore standing	Staff P 306 Bus Core	Bus 496 50	Independent Study (1-5) Arranged Prerequisite: Permission of Instructor	Staff
Bus 330 01	Cost Accounting (5) 8-week, MW, 11:50 a.m.-2:20 p.m. Prerequisites: Bus 231 and Junior standing	Staff P 353	BUSINESS GRADUATE COURSES		
Bus 333 01	Intermediate Accounting II (5) 8-week, TTh, 11:50 a.m.-2:20 p.m. Prerequisites: Bus 332 and Junior standing	Staff P 351	Bus 501 01	Business Statistics (3) 8-week, MW, 7:15-8:45 p.m.	Staff P 353
Bus 334 01	Intermediate Accounting III (5) 8-week, TTh, 5:35-7:55 p.m. Prerequisites: Bus 333 and Junior standing	Staff P 353	Bus 502 01	Financial Accounting (3) 8-week, MW, 5:30-7:00 p.m.	Staff P 353
Bus 340 01	Business Finance (5) 8-week, Daily, 10:30-11:40 a.m. Prerequisites: Bus 231, Ec 271, and Junior standing	Staff P 354	Bus 503 01	Corporate Financial Theory (3) 8-week, MW, 5:30-7:00 p.m. Prerequisite: Bus 502	Staff P 354
			Bus 504 01	Marketing Processes (3) 8-week, TTh, 7:15-8:45 p.m.	Staff P 304

Course/Section	Description/Credit Session/Time	Instructor Building/Room	Course/Section	Description/Credit Session/Time	Instructor Building/Room
Bus 505 01	Legal Environment (3) 8-week, TTh, 5:30-7:00 p.m.	Staff P 304	Bus 578 01	Legal Influences on Business (3) 8-week, TTh, 7:15-8:45 p.m.	Staff P 302
Bus 506 01	Economic Analysis (3) 8-week, TTh, 7:15-8:45 p.m.	Staff P 305	Bus 579 53	Research (3) Arranged Permission of Instructor	Staff Arr
Bus 507 01	Organization Behavior (3) 8-week, TTh, 5:30-7:00 p.m.	Staff P 302	Bus 580 01	Organization Structure and Theory (3) 8-week, TTh, 5:30-7:00 p.m. Prerequisite: Bus 507	Staff P 354
Bus 508 01	Production and Operations 8-week, MW, 7:15-8:45 p.m. Prerequisites: Bus 500 and 501	Staff P 304	Bus 581 01	Human Resource Management (3) 8-week, Tuesday, 7:15-10:00 p.m. Prerequisite: Bus 580	Staff P 405
Bus 530 01	Managerial Accounting (3) 8-week, MW, 5:30-7:00 p.m. Prerequisite: Bus 502	Staff P 451	Bus 585 01	Management of Change (3) June 25, July 9, 23, August 6, (Fridays) 7:00-10:00 p.m. June 26, July 10, 24, August 7, (Saturdays) 9:10 a.m.-12:10 p.m. Also offered under Pub 585 01. See for description.	Staff E 111
Bus 539 53	Research in Accounting (3) 8-week, Arranged Permission of Instructor	Staff Arr	Bus 586 01	Small Business Management (3) 8-week, Wednesday, 7:15-10:00 p.m. Prerequisite: Bus 580	Staff P 454
Bus 540 01	Managerial Finance (3) 8-week, TTh, 7:15-8:45 p.m. Prerequisite: Bus 503	Staff P 354	Bus 589 53	Research (3) Arranged Permission of Instructor	Staff Arr
Bus 542 01	Investments (3) 8-week, TTh, 5:30-7:00 p.m. Prerequisite: Bus 540	Staff P 451	Bus 595 01	Business Policy (3) 8-week, TTh, 7:15-8:45 p.m. Permission of Instructor	Staff P 451
Bus 549 53	Research in Finance (3) Arranged Permission of Instructor	Staff Arr	Bus 596 50	Independent Study (1-3) Arranged Permission of Instructor	Staff Arr
Bus 550 01	Domestic and International Marketing (3) 8-week, TTh, 5:30-7:00 p.m. Prerequisite: Bus 504	Staff P 306 P 306	CHEMISTRY		
Bus 559 53	Research in Marketing (3) Arranged Permission of Instructor	Staff Arr	Ch 123 01	General Chemistry III (4) First, Daily, 9:20-11:30 a.m. Oxidation-reduction, chemistry of metals, transition metal and non-metals, chemical kinetics. Prerequisite: Ch 122.	Thorsell Ba 502
Bus 560 01	Management Information Systems (3) 8-week, MW, 7:15-8:45 p.m. Prerequisites: Bus 501 and 508	Staff P 354	Ch 133 01	General Chemistry Lab III (1) First, TTh, 1:10-4:10 p.m. Introduction to semimicro qualitative analysis, introduction to quantitative analysis. Prerequisite: Ch 132	Thorsell Ba 502
Bus 562 01	Advanced Statistical Analysis (3) 8-week, MW, 5:30-7:00 p.m. Prerequisites: Bus 501 and 508	Staff P 351	Ch 241 01	Organic Chemistry I (4) First, Daily, 9:20-11:30 a.m. Beginning organic chemistry for chemistry and biology majors and premed students. Prerequisites: Ch 123 and 132.	Meany Ba 501
Bus 569 53	Research (3) Arranged Permission of Instructor	Staff Arr	Ch 242 01	Organic Chemistry II (4) Second, Daily, 9:20-11:30 a.m. Continuation of Ch 241. Prerequisites: Ch 241 and 251.	Meany Ba 501
Bus 570 01	Managerial Economics (3) 8-week, MW, 5:30-7:00 p.m. Prerequisite: Bus 506	Staff P 304			
Bus 572 01	Labor-Management Issues (3) 8-week, MW, 7:15-8:45 p.m. Prerequisite: Bus 506	Staff P 351			

Course/Section	Description/Credit Session/Time	Instructor Building/Room	Course/Section	Description/Credit Session/Time	Instructor Building/Room
Ch 251 01	Organic Chemistry Lab I (2) First, TTh, 1:10-5:10 p.m. Laboratory for Ch 241. Corequisite: Ch 241.	Meany Ba 501	CJP 379 50	Field Experience II (1-5) Arranged Permission of Instructor	Kagi Arr
Ch 252 01	Organic Chemistry Lab II (2) Second, TTh, 1:10-5:10 p.m. Laboratory for Ch 242. Corequisite: Ch 242. Prerequisite: Ch 251.	Meany Ba 501	CJP 450 01	Politics and the Criminal Justice System (5) 7-week, 9:10-10:20 a.m. Analysis of interaction of political systems and institutions of Criminal Justice.	Kagi LA 325
COMMUNITY SERVICES			CJP 496 50	Independent Study (1-5) Arranged Permission of Instructor.	Kagi Arr
CS 410 01	Counseling in Human Services (5) 7-week, Daily, 10:30-11:40 a.m. Development of skills to learn behavior change process.	Slape LA 322	ECONOMICS		
COMPUTER SCIENCE			Ec 271 01	Principles of Economics—Macro (5) 8-week, Daily, 9:10-10:20 a.m. Prerequisite: Sophomore standing	Staff Core Option Bus Core
ECS 113 01	Fundamentals of BASIC Programming (5) 8-week, MTThF 8:00-9:00 a.m. Elementary concepts and techniques of computer programming. BASIC language is introduced and used to write a series of non-mathematical programs.	Chang Ba 403	EDUCATION		
ECS 113 02	Fundamentals of BASIC Programming (5) 8-week, TTh, 5:30-7:50 p.m.	Troy Ba 403	One-Week Courses Variable dates, June 21-August 6		
ECS 114 01	Fundamentals of FORTRAN Programming (5) 8-week, 9:20-10:20 a.m. Elementary concepts and techniques of computer programming. FORTRAN language is used to write a series of programs.	Ehlers Ba 403	Ed 491 SA 01	History of Catholic Education in the United States (1) June 14-18, Daily, 9:00-11:00 a.m. An historical examination of the development of Catholic education in the United States, with implications for present and future developments. (Reduced tuition: \$35.00)	Clark P 401
ECS 201 01	Introduction to Computer Science (5) 8-week, MTThF, 9:20-10:20 a.m. Fundamentals of computers and computer science. Algorithms, programs, information representation, and computer organization are introduced.	Staff Ba 402	Ed 491 SB 01	Beginning Instructional Theory in Practice (ITIP) (3) June 14-18, Daily, 9:00 a.m.-4:00 p.m. Elements of successful teaching distilled from the literature in human learning and from observation of master teachers. Opportunities to write, explain, and apply concepts of teaching to an instructional objective, correct level of difficulty, monitoring and adjusting lesson analysis, anticipatory set, overt and covert behavior and closure. The principles of learning theory which are stressed include motivation, retention, and practice. (Reduced tuition \$105.00)	Huck/Perri P 404
ECS 210 01	Intermediate Programming with PASCAL (5) 8-week, TTh, 5:30-7:50 p.m. More advanced concepts and techniques of programming are introduced. Students will use PASCAL to write intermediate level programs. Prerequisite: ECS 113 or ECS 114.	Lee Ba 402	Ed 491 SC 01	Stress Management (3) June 21-25, Daily, 1:10-6:20 p.m. An action-oriented course using discussions, readings, simulations, and mini-lectures focusing on positive and negative effects of stress and its management. Topics will include the nature of distress for individuals and organizations, leadership roles related to distress and burnout, and coping and avoidance strategies.	Champoux P 452
ECS 220 01	Intermediate Programming with COBOL (5) 8-week, MW, 5:30-7:50 p.m. Advanced concepts and techniques of programming are introduced, with emphasis in data management. Students will use COBOL to write programs. Prerequisite: ECS 113 or ECS 114.	Hsu Ba 402	CRIMINAL JUSTICE PROGRAM		
CRIMINAL JUSTICE PROGRAM			CJP 378 50	Field Experience I (1-5) Arranged Directed field placement. Permission of Instructor.	Kagi Arr

Course/Section	Description/Credit Session/Time	Instructor Building/Room	Course/Section	Description/Credit Session/Time	Instructor Building/Room
Ed 492 SA 01	Scriptural Background for Religion Teachers (3) June 21-25, Daily, 9:00 a.m.-4:00 p.m.	Eblen P 401	Ed 561 SA 01	Seminar in the School Superintendency (3) July 19-23, Daily, 1:10-6:20 p.m.	Sealey P 452
Identification and examination of scriptural passages, particularly relevant to the curriculum in religious education; applications for religion teachers. (Reduced tuition: \$105.00)			Focus on central office administrative concerns; principles and problems associated with the relationships among local board, personnel, community, and government.		
Ed 492 SB 01	Peace Education in the Elementary School (3) June 28-July 2, Daily, 9:00 a.m.-4:00 p.m.	Fellers P 404	Ed 563 SA 01	The School Administrator and Practical Politics (3) June 28-July 2, Daily, 1:10-6:20 p.m.	Smith P 452
Curriculum materials and instructional methods appropriate for introducing elementary students to topics and issues related to world peace. (Reduced tuition \$105.00)			This course focuses on the school as a political arena and offers a political perspective on the theory and practice of managing change and conflict in schools.		
Elementary Language Arts Methods:			TWO-WEEK COURSES		
Ed 492 SC 01	Spelling (1) June 21-25, Daily, 1:10-3:40 p.m.	Schuck/Towner P 405	June 21 - July 2		
Ed 492 SD 01	Creative Writing (1) June 28-July 2, Daily, 1:10-3:40 p.m.	Schuck/Towner P 405	Ed 450 01	Gifted Education: Introduction (3) June 21-July 2, Daily, 1:10-3:40 p.m.	Langden P 551
Ed 492 SE 01	Oral Expression (1) July 6-9, Daily, 1:00-3:50 p.m.	Schuck/Towner P 405	Definition of giftedness; identification, curriculum modes, program organization, parent involvement, attitudes concerning giftedness, and evaluation of student performance.		
Ed 492 SF 01	Listening Skills (1) July 12-16, Daily, 1:10-3:40 p.m.	Schuck/Towner P 405	Ed 484 01	The Drug Scene (3) June 21-July 2, Daily, 1:10-3:40 p.m.	Lucey CC 155
Essential topics in elementary language arts. Students may enroll in one class or any combination of classes.			A survey of the misuse and abuse of illicit drugs; information for concerned school personnel. Also offered under PE 484 01.		
Ed 493 SA 01	Student Motivation and Positive Discipline (3) August 2-6, Daily, 1:10-6:20 p.m.	Ingram P 452	Ed 491 SG 01	Symposium on Alcoholism (3) June 21-July 2, Daily, 9:00 a.m.-3:30 p.m.	Schnell/ Guest Lecturers P 404
Practical approaches to planning and implementing classroom and school-wide programs for pro-social behavior and positive discipline. The course is designed for teachers, supervisors, and administrators.			Special emphasis on polydrug abuse in youth. Alcoholism: extent, nature, causes, treatment. Prerequisite to all other courses for the Basic Certificate in Alcohol Studies. Also offered under Alc 400 01 and Psy 490 01.		
Special Topics in Elementary School Mathematics			Ed 493 SB 01	Montessori for Teachers and Parents (3) June 21-July 2, Daily, 9:10-11:40 a.m.	Lange P 503
Ed 493 SE 01	Problem Solving (1) July 19-23, Daily, 1:10-3:40 p.m.	Sullivan P 405	Introduction to the educational philosophy of Maria Montessori. Focus on a variety of methods and materials for teachers and parents of preschool through primary grade children.		
Ed 493 SF 01	Diagnosing Learning Problems in Mathematics (1) July 26-30, Daily, 1:10-3:40 p.m.	Sullivan P 405	Ed 493 SK 01	Learning Styles and Current Brain Research (3) June 21-July 2, Daily, 1:10-3:40 p.m.	Morton LA 203
Ed 493 SG 01	Creative Practice (1) August 2-6, Daily, 1:10-3:40 p.m.	Sullivan P 405	Ed 508 01	Politics, Policy and Education (3) June 21-July 2, Daily, 3:50-6:20 p.m.	Pierce P 456
Ed 493 SH 01	Computers (1) August 9-13, Daily, 1:10-3:40 p.m.	Sullivan P 405	Local, state and federal political structures and processes which influence and in turn are influenced by education policies. Emphasis on use of these systems by practicing educators to achieve goals.		
Essential topics in elementary school mathematics. Students may enroll in one class or any combination of classes.					

Course/Section	Description/Credit Session/Time	Instructor Building/Room	Course/Section	Description/Credit Session/Time	Instructor Building/Room
July 6-16			Ed 541 01 Advanced Seminar on Teaching (3) Aug. 2-13, Daily, 1:10-3:40 p.m.		
Ed 452 01	Gifted Education Workshop II (3) July 6-16, Daily, 10:30 a.m.-1:00 p.m.	Bronson P 456	In-depth analysis of current theories and research on the teaching-learning relationship. Individualized application for experienced teachers at all grade levels and subject areas.		
Curriculum for the gifted including differentiating the curriculum, gifted student and arts, counseling the gifted student and a sharing forum on giftedness. Prerequisite: Ed 450 or permission of Instructor.			FIRST FOUR-WEEK TERM		
Ed 491 SD 01 Mainstreaming the Adapted Curriculum (3) July 6-16, Daily, 1:10-3:40 p.m.			June 21-July 16		
This course will examine various strategies and techniques for adapting the elementary and secondary school curriculum for the handicapped learners in the regular classroom.			Ed 424 01	Introduction to Learning Disabilities (3) First, Daily, 7:50-9:00 a.m.	Denoon P 451
Ed 493 SC 01 Leadership Models of Change (3) July 19-30, Daily, 1:10 p.m.-3:40 p.m.			History and current problems in diagnosis and remediation of learning disabilities.		
Current models of effective leadership, assessment of leadership styles, and applications to school situations.			Ed 428 01	Special Education: Language Development (3) First, Daily, 10:30-11:40 a.m.	Denoon P 451
Ed 553 01 Gifted Education: Methods (3) July 19-30, Daily, 10:30 a.m.-1:00 p.m.			Critical features of receptive and expressive language with consideration of diagnosis, curriculum, and method.		
Teaching strategies for teachers of gifted education. Prerequisite: Ed 450.			Ed 491 SE 01	Montessori Language Arts for the Elementary School (5) First, Daily, 1:10-3:20 p.m.	Chattin-McNichols P 503
Ed 580 SA 01 Building Positive Staff Relations (3) July 19-30, Daily, 1:10-3:40 p.m.			Montessori materials and methods for children from six to twelve. Permission of Instructor.		
Theories of group dynamics and interpersonal communication applied to the development of positive staff relations in the school setting.			Ed 491 SF 01	Literature for Early Childhood (3) First, Daily, 9:10-10:20 a.m.	Towner P 405
Ed 585 01 Values and Leadership Instruction (3) July 19-30, Daily, 1:10-3:40 p.m.			Survey of literature for pre-school, kindergarten, and primary education.		
An introduction to the study of values, the process of valuing, the phenomenon of leadership and the values inherent in leadership and in leadership behavior. Focus is on the development of personal values and the resolution of values-related problems.			Ed 491 SH 01	Sociology of Education (5) First, Daily, 10:30 a.m.-12:30 p.m.	Johnson LA 204
August 2-13			Discusses and critiques the development and impact of education in a capitalist society. Considers the potential for contemporary change within this important social institution.		
Ed 492 SG 01	The Complete English Teacher (3) August 2-13, Daily, 10:30 a.m.-1:00 p.m.	Foran P 454	Ed 500 01	Introduction to Research and Graduate Study (3) First, Daily, 7:50-9:00 a.m.	Chattin-McNichols P 452
Teaching methods focusing on clarity of expression, approaches to essay writing, helping develop creativity and competence.			Introduction to research skills and literature in students' fields. Includes an orientation to graduate studies. Ordinarily taken as first graduate course.		
Ed 493 SD 01	Parent-Teacher Conferencing (3) August 2-13, Daily, 1:10-3:40 p.m.	Morefield P 551	Ed 501 01	Philosophy of Education (3) First, Daily, 9:10-10:20 a.m.	Zarter P 451
Techniques for developing a positive and supportive approach to parent-teacher conferences.			Philosophical foundations of the helping professions.		
			Ed 507 01	Principles of Educational Law (3) First, Daily, 9:10-10:20 a.m.	Peterson P 456
			Introduction to American legal system and principles affecting education. Emphasis on constitutional, statutory, regulatory, and case precedents applicable nationally to all levels of education.		
			Ed 512 01	Informational Sources in Counseling (3) First, TTh, 4:20-6:50 p.m.	Crow P 551
			Study of vocational development counseling exploration of educational, social, vocational, and referral sources. Prerequisite: Ed 513.		

Course/Section	Description/Credit Session/Time	Instructor Building/Room	Course/Section	Description/Credit Session/Time	Instructor Building/Room
Ed 522 01	Child Psychology and Learning (3) First, Daily, 11:50 a.m.-1:00 p.m.	Guest P 452	Ed 604 01	Workshop in Organizational Development and Change (3) First, Alternate Days, 1:30-4:30 p.m.	Morford/Cooper/Wahle N Aud
Investigation of various theories of child development and learning.			Integrated workshop relating to organizational development, conflict management. Required during the second summer in the Ed.D. Program. Permission of Instructor.		
Ed 523 01	Adolescent Psychology and Learning (3) First, Daily, 11:50 a.m.-1:00 p.m.	Zielinski P 551	Second Four-Week Term July 19-August 13		
Investigation studies in adolescent psychology and learning.			Ed 425 01	Psychology of the Exceptional Child (3) Second, Daily, 10:30-11:40 a.m.	Denoon P 405
Ed 532 01	Field Practicum in Reading (6) First, Arranged	Pirrung/Freitag Arr	Study of the atypical child who differs from the norm to well above or below the average; tests for evaluation, consideration of remedial techniques. Prerequisite: Ed 322 or permission of Instructor.		
Supervised field experience in diagnosis and teaching of reading. Prerequisite: Ed 533.			Ed 492 SH 01	Secondary Methods in Learning Disabilities (3) Second, Daily, 10:30-11:40 a.m.	Staff P 456
Ed 534 01	Seminar-Teaching of Reading (3) First, Daily, 11:50 a.m.-1:00 p.m.	Pirrung P 455	Methods of instruction for secondary students with learning problems.		
Development of reading skills at all levels; examination and evaluation of current research, reading materials, practices, and programs. Prerequisite: Ed 336 or 337.			Ed 493 SJ 01	Alternative Futures for Education (3) Second, Daily, 10:30-11:40 a.m.	Morefield P 451
Ed 536 01	Supervision of Instruction (3) First, Daily, 10:30-11:40 a.m.	Haggerty P 405	An examination of trends, future developments, and policy alternatives as they affect the future of educational organizations.		
Improvement of instruction through supervisory leadership.			Ed 515 01	Multicultures (3) Second, Daily, 1:10-2:20 p.m.	Sasaki P 454
Ed 540 01	Fundamentals of Curriculum Development (3) First, Daily, 7:50-9:00 a.m.	Clark P 551	Examination of a wide variety of cultures with implications for the helping professions.		
Historical, philosophical foundations, principles, types, and methods of curriculum development and organization.			Ed 535 01	Reading in the Content Fields (3) Second, Daily, 10:30-11:40 a.m.	Long P 455
Ed 561 SB 01	Counseling: Continuing Certification (3) First, TTh, 6:30-9:00 p.m.	Ingram P 503	Decoding and vocabulary analysis, comprehension, reading rate, study skills, and reading interests as related to specific content fields. Prerequisite: Ed 336 or 337.		
Designed for practicing counselors preparing for Continuing Certification. Emphasis on improving skills in the following areas: working with administration and staff, time management, class scheduling, and developing/implementing innovative programs. Other relevant topics of participants' choosing will be covered.			Ed 543 01	Corrective Techniques in Teaching of Reading (3) Second, Daily, 9:10-10:20 a.m.	Thorleifson P 455
Ed 581 01	Fundamentals of Administration (3) First, Daily, 9:10-10:20 a.m.	Lowery P 455	Identification of components of effective corrective reading programs; description and application of specific methods and materials; evaluation and design of corrective reading approaches. Prerequisite: Ed 533.		
Administration theory, style, criteria, responsibilities, process, and management by objectives.			Ed 552 01	Learning Disabilities: Special Methods (3) Second, Daily, 7:50-9:00 a.m.	Staff P 456
Ed 583 01	School Finance (3) First, Daily, 7:50-9:00 a.m.	Albright P 455	Focus on methods of instruction of children with intensive learning problems including diagnosis and prescriptive teaching, multisensory systems, phonic systems, language development systems. Prerequisite: Ed 547.		
Historical development, balanced taxation, school support program problems and controversies.					
Ed 586 01	Administration of Professional Personnel (3) First, Daily, 10:30-11:40 a.m.	Lowery P 455			
Assists mid-management educational administrator to develop a comprehensive plan for meeting faculty and staff personnel needs equitably and effectively.					

Course/Section	Description/Credit Session/Time	Instructor Building/Room	Course/Section	Description/Credit Session/Time	Instructor Building/Room
Ed 562 01	Psychology of Adult Development (3) Second, Daily, 11:50 a.m.-1:00 p.m.	Zielinski P 455	Ed 537 50	Curriculum Independent Study (1-4) Full, Arranged	Haggerty/Denoon/Pirung Arr
Major developmental stage theories and predictable adult crisis/passages. Application to both intra- and interpersonal development and relations. For educators, counselors, and other helping professionals.			Ed 538 50	Program Administrator Internship (3-9) Full, Arranged	Haggerty Arr
			Supervised field experience in an educational program administrator specialty. Prerequisite: Ed 530.		
Ed 584 01	Washington School Law (3) Second, Daily, 7:50-9:00 a.m.	Howard P 455	Ed 539 01	Curriculum Graduate Project (3) Full, Arranged	Haggerty/Denoon/Pirung Arr
School laws of Washington based on its constitution, statutes, administrative code, and court precedents. Emphasis on application to the K-12 system. Prerequisite: Ed 507.			Ed 547 01	Diagnosis and Prescription (3) Full, MW, 1:30-3:00 p.m.	Staff P 456
Ed 593 01	School Business Office (3) Second, Daily, 10:30-11:40 a.m.	Albright/Sealey LA 323	Comparison of various methods used in the diagnosis of learning problems. Selection, administration, and analysis of tests plus writing educational prescriptions. Prerequisite: Ed 424.		
Legal and procedural factors in school budgeting, expending, accounting, auditing, planning policy, and community reporting.			Ed 551 01	Counseling Practicum (4) Full, Wednesday, 1:10-5:00 p.m.	Staff P 455
Ed 600 01	Workshop in Educational Leadership (9) Second, Daily, 9:00 a.m.-4:30 p.m.	Morford/Cooper/Wahle Ll, Stimson Rm.	Supervised counseling experience in which the counselor candidate is responsible for actual counseling cases, with supervision. Prerequisites: Ed 510, 513.		
An integrated four-week workshop in educational leadership. Includes theoretical and practical study of leadership in educational institutions. Required first course in Ed. D. Program. Permission of instructor.			Ed 555 50	Practicum: Special Education (3-6) Full, Arranged	Denoon Arr
			Diagnostic and prescriptive teaching with children who have learning or behavior problems. Permission of Instructor.		
FULL EIGHT-WEEK TERM					
June 21-August 13					
Ed 510 01	Fundamental Counseling Skills (3) Full, MW, 9:10-11:10 a.m.	Owen P 551	Ed 557 50	Counseling Independent Study (1-3) Full, Arranged	O'Connor/Zielinski/Owen Arr
Focus on basic counseling skill training through intensive small group practice. Designed to complement Ed 513 which should be taken concurrently. Three 1-hour labs additional.			Ed 559 01	Counseling Graduate Project (3) Full, Arranged	O'Connor/Zielinski/Owen Arr
Ed 513 01	Counseling Theories (3) Full, TTh, 9:10-11:10 a.m.	O'Connor P 551	Ed 560 01	Family Counseling (3) Full, Tuesday, 7:00-9:30 p.m.	Bestock P 456
Theoretical foundations of major counseling approaches with opportunities for in-class practice in simulated counseling interview. Complement to Ed 510 which should be taken concurrently.			Demonstration/discussion focusing on dysfunctional families, including theoretical and practical applications. Prerequisites: Ed 510, 513.		
Ed 517 01	Group Counseling Theory and Practice (3) Full, TTh, 9:10-11:10 a.m.	Owen P 452	Ed 564 01	Counseling Internship I (4) Full, Monday, 4:20-6:50 p.m.	O'Connor P 504
Emphasizes group counseling theory. Provides small group experiences to integrate theory and procedures. Discusses possible applications. Prerequisites: Ed 510, 513. Saturday encounter marathon required.			Ed 565 01	Counseling Internship II (4) Full, Monday, 4:20-6:50 p.m.	Zielinski P 551
Ed 527 01	Counseling Tests and Measurements I (3) Full, Monday, 5:30-8:30 p.m.	Calsyn P 454	Ed 566 01	Counseling Internship III (3) Full, Arranged	Owen Arr
Familiarization with theory and practice of testing and measurement, sources of information, reliability, validity, and appropriateness of commonly used instruments.			Ed 590 01	Administrative Internship I (3) Full, Arranged	Lowery Arr
			Ed 591 01	Administrative Internship II (3) Full, Arranged	Lowery Arr

Course/Section	Description/Credit Session/Time	Instructor Building/Room	Course/Section	Description/Credit Session/Time	Instructor Building/Room
Ed 592 01	Administrative Internship III (3) Full, Arranged	Lowery Arr	Mechanical Engineering		
Ed 596 01	Administrative Graduate Project (3) Full, Arranged Permission of Instructor	Lowery Arr	EML 105 01	Engineering Graphics and Analysis (5) 8-week, Daily, 9:20-11:30 a.m. Drafting theory, descriptive geometry, vector algebra, elementary programming. 130 minute class.	Williams E 110
Ed 597 50	Administration Independent Study (1-3) Full, Arranged Permission of Instructor.	Lowery Arr	EML 113 01	Statics (5) 8-week, Daily, 8:00-9:00 a.m. Force and Moment equilibrium, hydrostatics, friction, virtual work.	Williams E 110
Ed 605 50	Independent Study in Educational Leadership (1-5) Full, Arranged Permission of Instructor.	Morford/Cooper/Wahle Arr	EML 281 01	Dynamics (5) 8-week, Daily, 9:20-10:20 a.m. Kinematics and kinetics of particles and rigid bodies.	Chien E 111
Ed 606 50	Independent Study in Educational Leadership (1-5) Full, Arranged Permission of Instructor.	Morford/Cooper/Wahle Arr	EML 321 01	Engineering Thermodynamics (5) 8-week, Daily, 9:10-10:20 a.m. Thermal properties of ideal and real gases, liquids, vapors, and mixtures. Conservation of energy. Conversion of thermal energy to work. Power, efficiency, cycles, compressible gas flow. Prerequisite: ECL 331.	Filler E 114
Ed 606 50	Independent Study in Educational Leadership (1-5) Full, Arranged Permission of Instructor.	Morford/Cooper/Wahle Arr	Software Engineering		
Ed 607 50	Independent Study in Educational Leadership (1-5) Full, Arranged Permission of Instructor.	Morford/Cooper/Wahle Arr	ESW 508 01	Technical Communication (3) 8-week, MW, 5:30-7:50 p.m. The role of communication skills in software engineering. Organizing ideas, writing, speaking, structure and content of proposals, reports, manuals, and other project documentation. Lectures and laboratory.	Staff Ba 403
Ed 608 50	Internship in Educational Leadership (1-9) Full, Arranged Permission of Instructor.	Morford/Cooper/Wahle Arr	ESW 586 01	Software Engineering Lab II (3) Arranged A three-quarter sequence of laboratory activity in which students work in a team environment to specify, design, implement, test, document, and modify a software system, using the tools and techniques discussed in the other courses. Lectures and laboratory. Prerequisites: ESW 500, 501, 508, 516.	Lee/Frankel Arr
Ed 610 50	Doctoral Project in Educational Leadership (1-14) Full, Arranged Permission of Instructor.	Morford/Cooper/Wahle/Staff Arr	ESW 596 53	Independent Study (3) Arranged	Staff Arr

ENGINEERING

Civil Engineering

ECL 208 01	Man and Environment I (5) 8-week, Daily, 8:00-9:00 a.m.	Staff E 114 Core Option
------------	---	----------------------------

Role of technology in the deterioration of environment and its restoration. Introduction to ecology, population, agriculture, pesticides, fertilizers, water pollution.

ECL 321 01	Fluid Mechanics (5) 8-week, Daily, 10:30-11:30 a.m.	Staff E 114
------------	---	-------------

Fluid static and dynamics. Topics include fluid properties, continuity equation. Euler's equation; laminar and turbulent flow regimes. Prerequisites: EML 281 and Mt 135.

ENGLISH

En 110 01	Freshman English (5) 7-week, Daily, 9:10-10:20 a.m.	Tadie LA 203 Core
-----------	---	----------------------

Three areas will be stressed: 1) the rules that govern the organization of the English language; 2) the ways people can be persuaded by the manipulation of language; and 3) the writing of essays modeled on readings from eminent authors, past and present.

En 132 01	American Literature (5) 7-week, Daily, 9:10-10:20 a.m.	Spiers LA 203 Core Option
-----------	--	------------------------------

A survey of American literature from the beginning to the 20th Century.

Course/Section	Description/Credit Session/Time	Instructor Building/Room	Course/Section	Description/Credit Session/Time	Instructor Building/Room
En 133 01	World Literature (5) 7-week, Daily, 9:10-10:20 a.m.	Rustia LA 324 Core Option	FINE ARTS		
A close reading and analysis of the world's literary classics, starting with the masterpieces of the Orient from Arabia to Japan—moving into European and American novels, plays, and poetry.			FA 103 01	Fine Arts — Music (5) 7-week, Daily, 11:50 a.m.-1:00 p.m.	Barnes Bu 117
			Introduction to music as an art and as a literature, with emphasis upon historical and cultural correlations.		
En 203 01	Vocabulary (5) 7-week, Daily, 11:50 a.m.-1:00 p.m.	Spiers LA 205	FA 491 SA 01	Integration of Abilities (5) First, Daily, 9:10-11:20 a.m.	Dore Bu 119
A practical course in vocabulary building, Latin and Greek roots, basic semantics, and phonetics.			Discovering your own creative ability and getting acquainted with the way you work. Main focus of course is on developing creativity, confidence.		
En 250 01	Practical Criticism (5) 7-week, Daily, 7:50-9:00 a.m.	Powers LA 205 Core Option	Art		
A study of the various schools of literary criticism and an analysis of aesthetic principles, relating these to assigned drama, short stories, and other artistic achievements.			Art 221 01	Drawing (2)	Herard
			Art 222 01	7-week, MWF, 10:30-11:40 a.m.	Bu 102
			Art 223 01	Study of line and value in the delineation of form; training in awareness and perception, structure and space indication.	
En 264 01	English Authors I (5) 8-week, MW, 5:30-8:00 p.m.	Monda LA 321 Core Option	Art 314 01	History of Art (5) 7-week, Daily, 9:10-10:20 a.m.	Laigo Bu 109
A study of the major British writers from the Medieval period through the Renaissance. Required for English majors.			Survey of the arts of the Western World from the Renaissance to the present.		
En 266 01	English Authors III (5) 7-week, Daily, 1:10-2:20 p.m.	Tadie LA 202 Core Option	Art 334 01	Graphics (2)	Herard
A study of major British writers from the Romantic period and the Victorian (1798-1900) with reference to their influence on modern thought and society. Also films about the people and settings from which these great ideas emerged.			Art 335 01	7-week, TTh, 10:30-11:40 a.m.	Bu 104
			Art 336 01	Principles and techniques of lithography.	
En 391 SA 01	Reading and Writing the Short Story for Pleasure and Profit (5) 7-week, Daily, 9:10-10:20 a.m.	Carroll LA 205	Art 346 01	Painting (2)	Laigo
The development of the form, the history of its concerns, a hint of its future. The class will be of particular interest to teachers of American fiction and to those desiring insight into the United States' most pervasive art form.			Art 347 01	7-week, Monday, 11:50 a.m.-2:20 p.m.	Bu 102
			Art 348 01	Principles and practice of rendering in paint composition.	
En 391 SB 01	Shakespeare in Ashland (5) June 21-July 10, Arranged	Taylor Arr	Art 351 01	Sculpture (2)	Herard
Study of eight plays in production in Ashland, Oregon, after one week of classes on campus. For course description and further information, see "Programs of Special Interest" in front section. Permission of Instructor required.			Art 352 01	7-week, MWF, 11:50 a.m.-12:50 p.m.	Bu 104
			Art 353 01	Principles and practice towards realizing three-dimensional form.	
En 391 SC 01	Literature of the Emerging Nations (5) 7-week, Daily, 11:50 a.m.-1:00 p.m.	Rustia LA 203	Art 370 01	Arts and Crafts (5) First, Daily, 1:10-4:10 p.m.	Herard Bu 104
Draws attention to the old problems, the changes, and the new attendant problems and aspirations for the future of the Third World. The class will read and discuss literary works by representative authors from Third World countries. Through these literary expressions of the anguish and the hope of the Third World people, we may become more aware of the different reality which the Third World faces and needs to understand.			Experience in artistic expression in basic art media for elementary and secondary teachers.		
			Art 491 SA 01	Japanese Woodblock (2) First, TTh, 1:10-3:10 p.m.	Thiel Bu 106
			An introduction to the techniques of Japanese woodblock. Carving of the blocks, preparation of papers, and the printing process. Hanga employs water colors and a variety of woods.		
			Art 491 SB 01	Japanese Calligraphy (2) Second, TTh, 1:10-3:10 p.m.	Thiel Bu 109
			Japanese calligraphy is designed for beginning and continuing students, and comprises the aesthetics, history, and techniques of this art form. Three styles of writing will be investigated, starting with basic strokes, characters, and their symbolism. Slides will be used to demonstrate the works of ancient masters. Experience in the Japanese language is NOT required.		

Course/Section	Description/Credit Session/Time	Instructor Building/Room	Course/Section	Description/Credit Session/Time	Instructor Building/Room
Drama					
All dance classes Credit/No Credit. No Auditors.					
Dr 291 SA 01	Beginning Modern Dance I (3) First, Daily, 9:10-10:20 a.m.	Legters/Machala PDC	Mu 120 50	*Violin Lessons (1-2) 7-week, Arranged	Savage Arr
Development of basic skills in body movement for the expression of artistic ideas based on the concept of modern dance.			Mu 125 50	*Organ Lessons (1-2) 7-week, Arranged	Olson Arr
Dr 291 SB 01	Beginning Modern Dance II (3) First, Daily, 9:10-10:20 a.m.	Legters/Machala PDC	Mu 126 50	*Flute Lessons (1-2) 7-week, Arranged	Wollenberg Arr
Dr 291 SC 01	Beginning Ballet I (3) First, Daily, 2:00-3:30 p.m.	Staff PDC	Mu 291 SB 01	*Guitar Survey (2) First, Daily, 1:10-2:00 p.m.	Smith Bu 119
Development of basic skills in body movement for the expression of artistic ideas based on the concepts and techniques of ballet.			Survey and fundamentals for beginning and continuing students, consisting of folk, notation, history, ensemble, and reading skills.		
Dr 291 SD 01	Beginning Ballet II (3) First, Daily, 2:00-3:30 p.m.	Staff PDC	Mu 291 SC 01	*Beginning Voice Class (1) 7-week, Monday, 12:10-1:00 p.m.	Schneider Bu 107
Dr 291 SE 01	Jazz I (2) First, Daily, 3:30-4:30 p.m.	Staff PDC	Basic voice skills for beginning or out-of-shape voice students. Includes performance skills and singing skills progression.		
Development of basic skills in jazz dance.			Mu 291 SD 50	*Classical Guitar Lessons (1-2) 7-week, Arranged	Smith Arr
Dr 291 SF 01	Rhythmic Exercise (3) First, Daily, 7:45-9:00 a.m.	Staff PDC	*See instructor or department office before beginning of term to schedule lesson(s), or call 626-6336. Classes are credit/no credit. Fee is \$95 per student credit hour. No Auditors.		
Designed to give students a foundation in body alignment and muscle use through a series of rhythmic exercises emphasizing flexing and control.					
Dr 291 SG 01	Aerobic Dance (3) First, Daily, 5:30-6:45 p.m.	Staff PDC	FOREIGN LANGUAGES		
Rhythmic, energetic dance exercise to strengthen the cardiovascular system and to increase flexibility and muscle tone.			Fr 115 01	French I, II, III (15)	Milan/Inman
Dr 391 SA 01	Intermediate Modern Dance (3) First, Daily, 10:30-11:40 a.m.	Legters/Machala PDC	Fr 125 01	7-week, Daily, 7:50-11:40 a.m.	LA 208
Dr 391 SB 01	Jazz II (2) First, Daily, 3:30-4:30 p.m.	Staff PDC	Gr 115 01	German I, II, III (15)	Stark/Price
Dr 491 SA 01	Advanced Modern Dance (3) First, Daily, 10:30-11:40 a.m.	Legters/Machala PDC	Gr 125 01	7-week, Daily, 7:50-11:40 a.m.	LA 207
Dr 491 SB 01	Dance Repertory (2) First, Daily, 4:30-5:30 p.m.	Legters/Machala PDC	Gr 135 01		
Designed to develop performance skills. Repertory pieces will be set on students and will be performed informally at the end of the course. Bu 104			Sp 115 01	Spanish I, II, III (15)	Heinrich
			Sp 125 01	7-week, Daily, 7:50-11:40 a.m.	LA 206
			Sp 135 01		
			These intensive 15-credit programs are taught by highly skilled specialists in the Marchand Method. The courses enable the student to understand, speak, read, write, and think in the language taught, within a limited but adequate vocabulary. These courses take the beginning student through the first year of college French, German, or Spanish in one quarter.		
Music			GENERAL SCIENCE		
Mu 110 SA 50	*Piano Lessons (1-2) 7-week, Arranged	Barnes	ISC 391 SA 01	Geology and Mineralogy of the Pacific Northwest (2) 8-week, TTh, 7:00-8:00 p.m.	Smith Ga 224
Mu 110 SB 50	*Piano Lessons (1-2) 7-week, Arranged	Olson	This course will examine the general geologic setting and the basic mineralogy of the Pacific Northwest. Participants must be free for weekend field trips, in combination with the Ecology class (ISC 392). Methods of study and of reporting results will be stressed in the field study. Concurrent enrollment in ISC 392 SA 01 recommended.		
Mu 111 50	*Vocal Lessons (1-2) 7-week, Arranged	Schneider Arr			
Mu 114 01	Music Fundamentals (5) First, Daily 1:10-3:00 p.m.	Christensen Bu 117			
Fundamentals and methods of music leading to an effective music program in the elementary school. Required of all majors in elementary school education.					

Course/Section	Description/Credit Session/Time	Instructor Building/Room	Course/Section	Description/Credit Session/Time	Instructor Building/Room
ISC 392 SA 01	Field Ecology of Washington (2) 8-week, TTh, 8:10-9:10 p.m.	Hudson/Safford/Brubaker Ga 222	MATHEMATICS		
Introduction to life zones, habitats, and plants and animals of special interest in the state, through illustrated lectures and first-hand experience in half-day to three-day field trips in combination with the Geology Class (ISC 391). Participants must be free for weekend field trips during the project. Concurrent enrollment in ISC 391 SA 01 recommended.			Mt 112 01	College Algebra/Trigonometry (5) 7-week, Daily, 11:50 a.m.-1:00 p.m.	Troy Ba 403
			Good background for students who plan to take Mt 134 in the Fall.		
			Mt 118 01	College Algebra for Business (5) 7-week, Daily, 10:30-11:40 a.m.	Chang Ba 202
			Required in Business Program.		
			Mt 130 01	Elements of Calculus for Business (5) 7-week, Daily, 7:50-9:00 a.m.	Yandi Ba 401
			Continuation of Mt 118, required in Business Program; a short course in calculus with business applications.		
			Mt 175 01	Mathematics for the Liberal Arts Student (5) 7-week, Daily, 10:30-11:40 a.m.	Yandi Ba 401
			Intended for students who do not plan to take more mathematics.		
			Mt 200 01	Theory of Arithmetic (5) 7-week, Daily, 7:50-9:00 a.m.	Vinson Ba 202
			Designed for future elementary school teachers.		
			Mt 233 01	Multivariable Calculus and Linear Algebra (5) 7-week, Daily, 10:30-11:40 a.m.	Vinson Ba 403
			Partial derivatives, multiple integrals, and applications; introduction to differential equations, matrices, and determinants.		
			MILITARY SCIENCE		
			MS 292 SA 01	Basic Course Equivalent (5) Arranged	Hendrix/Tucker Arr
			Designed for sophomores and incoming juniors who desire to earn an Army commission in two years. Strategy, tactics, leadership, management, communication skills, history, and values.		
			MS 296 50	Independent Study (1-5) Arranged	Hendrix/Tucker Arr
			Individualized courses to meet individual student needs.		
			PHILOSOPHY		
			PI 110 01	Philosophical Problems: World (5) 7-week, Daily, 9:10-10:20 a.m.	Dickerson LA 320 Core
			A combined historical and problematic approach to the nature of philosophical inquiry. An introduction to fundamental philosophical problems of being, language, logic, knowledge, reality, human existence, and God.		
			PI 110 02	Philosophical Problems: World (5) 7-week, Daily, 10:30-11:40 a.m.	Risser LA 320 Core

HEALTH INFORMATION SERVICES

HI 492 SA 01 **Designing Computer Applications in Patient Information Systems (1)**
June 21-July 1, Tuesday, 4:00-6:00 p.m.

This course describes current computer applications used for patient medical record systems including "hands on" experience with an APPLE II system. Students perform strategic planning for computer developments in various health information settings.

HISTORY

Hs 100 01 **Origins of the Modern World (5)**
7-week, Daily, 7:50-9:00 a.m. Core Option

An interpretation of the historical development of modern society.

Hs 105 01 **Western Civilization II (5)**
7-week, Daily, 9:10-10:20 a.m. Core Option

The development of Western Civilization from the 18th to the 20th centuries.

Hs 231 01 **Survey of the United States (5)**
7-week, Daily, 10:30-11:40 a.m. Core Option

Events, movements, ideas, and institutions of American history from the era of discovery to the present.

HS 281 01 **Survey of the Far East (5)**
7-week, Daily, 10:30-11:40 a.m. Core Option

Domestic and international development of China, Japan, and Southeast Asia since 1900.

Hs 339 01 **Recent United States (5)**
7-week, Daily, 9:10-10:20 a.m. Core Option

The culture of the 1920's; the Great Depression; the Second World War; contemporary society.

Hs 341 01 **The Pacific Northwest (5)**
7-week, Daily, 7:50-9:00 a.m. LA 224

Past development and present problems of the states comprising the Pacific Northwest, with emphasis on Washington State.

Hs 492 SA 01 **Leadership in History: Orient and West (5)**
July 19-August 1, MWF, 3:00-5:00 p.m. and all-day seminar Saturday-Sunday, both weekends.

An examination in an historical setting of leadership in its perception of itself, others, and the norms and sources of leadership.

Course/Section	Description/Credit Session/Time	Instructor Building/Room	Course/Section	Description/Credit Session/Time	Instructor Building/Room
PI 220 01	Philosophical Problems: The Human Person (5) 7-week, Daily, 9:10-10:20 a.m.	Burke P 304 Core	PI 493 SA 01	The Myth of Mental Illness: Foucault, Laing, and Szasz (5) 8-week, TTh, 1:10-3:40 p.m.	Hoeller LA 325 Core Option
Systematic study of the nature and powers of the human person. Special emphasis on the problems of human knowing, freedom, and responsibility.			This course will examine the Western concept of madness and its treatment, with an especial historical emphasis on the origin of the concept of "mental illness."		
PI 220 02	Philosophical Problems: The Human Person (5) 7-week, Daily, 10:30-11:40 a.m.	Staff LA 203 Core	PI 497 50	Independent Study (1-5) Arranged	Staff Arr
PI 220 03	Philosophical Problems: The Human Person (5) 8-week, TTh, 5:30-8:00 p.m.	Hoeller P 453 Core	PHYSICAL EDUCATION AND RECREATION		
PI 250 01	Ethics (5) 7-week, Daily, 7:50-9:00 a.m.	Harkins LA 324 Core Option	PE 125 01	Tennis (1) June 21-July 2, Daily, 11:50 a.m.-1:00 p.m. Credit/No Credit	Lucey CC Astro Gym
General theory of moral behavior, ethics as a science, the purpose of human life and the means of attaining this goal. Applications of general ethical theory to specific moral issues.			PE 125 02	Tennis (1) July 5-16, Daily, 11:50 a.m.-1:00 p.m. Credit/No Credit	Lucey CC Astro Gym
PI 250 02	Ethics (5) 7-week, Daily, 10:30-11:40 a.m.	Burke LA 324 Core Option	PE 127 01	Racquetball (1) June 21-July 2, Daily, 11:00-11:50 a.m. Credit/No Credit	Vance CC HB Cts
PI 252 01	Business Ethics (5) 8-week, MW, 5:30-8:00 p.m.	Staff P 302 Core Option	PE 127 02	Racquetball (1) July 5-16, Daily, 11:00-11:50 a.m. Credit/No Credit	Vance CC HB Cts
Application of general ethical theory to those problems directly related to the business world; employment practices, wages, advertising, honesty, strikes.			PE 352 01	Orientation to Health and P.E. — Elementary (3) First, Daily, 9:10-10:20 a.m.	Vance CC 154
PI 260 01	Logic I (5) 7-week, Daily, 9:10-10:20 a.m.	Risser LA 322 Core Option	Required for initial elementary teaching credential.		
Systematic treatment of traditional logic.			PE 353 01	Orientation to Health and P.E. — Secondary (3) First, Daily, 10:30-11:40 a.m.	Lucey CC 154
PI 391 SA 01	Plato's Republic (5) 7-week, Daily, 9:10-10:20 a.m.	Orange LA 323 Core Option	Required for initial secondary teaching credential.		
A study of Plato's world view, theory of knowledge, ethics, and political philosophy through a close reading and discussion of the dialogue.			PE 484 01	The Drug Scene (3) June 21-July 2, Daily, 1:10-3:40 p.m.	Lucey CC 154
PI 393 SA 01	Philosophy in Science Fiction (5) 7-week, Daily, 10:30-11:40 a.m.	Dickerson LA 325 Core Option	A survey of the misuse and abuse of illicit drugs; information for concerned school personnel. Also offered under Ed 484 01.		
Study of philosophical problems that are raised by contemporary science fiction writers. These problems will include the paradoxes of time travel, whether machines can be human, and whether aliens could accept our moral values.			PHYSICS		
PI 491 SA 01	Gender and Social Reality (5) 7-week, Daily, 11:50 a.m.-1:00 p.m.	Orange LA 322 Core Option	Ph 200 01	Mechanics (5) 8-week, MTThF, 9:10-10:10 a.m. Laboratory: Tuesday, 1:10-4:00 p.m.	Toutonghi Ba 301
A multidisciplinary inquiry into the social and psychological reality of past and present gender roles, together with an attempt to describe future possibilities.			General Physics for students of science and engineering. Prerequisite: Mt 134.		
			Ph 201 01	Electricity and Magnetism (5) 8-week, MTThF, 8:00-9:00 a.m. Laboratory: Thursday, 1:10-4:00 p.m.	Guy Ba 301
			General Physics for students of science and engineering. Prerequisite: Mt 135		

Course/Section	Description/Credit Session/Time	Instructor Building/Room	Course/Section	Description/Credit Session/Time	Instructor Building/Room
Ph 291 SA 01	Cosmic Evolution (5) 7-week, Daily, 10:30-11:40 a.m.	Toutonghi Ba 301 Core Option	Psy 201 01	Statistics (5) 7-week, Daily, 7:50-9:00 a.m.	Gaffney P 353
An exploration of the formation and evolution of stars, galaxies, and the universe as a whole, including biological evolution in the astronomical context. This is an introductory course with no prerequisites.			Basic descriptive and inferential statistics; central tendency, variability, correlation, and regression.		
			Psy 210 01	Personality Adjustment (5) 7-week, Daily, 10:30-11:40 a.m.	Kugelman P 304 Core Option
			Stress and physical disease in their cultural context. Contrast present anxious age with earlier "age of anxiety" in antiquity.		
			Psy 296 01	Independent Study (1-5) Arranged	Staff Arr
			Psy 315 01	Abnormal Psychology (5) 7-week, Daily, 7:50-9:00 a.m.	Halling LA 326 Core Option
			Understanding the behavior of persons labeled as having psychological problems with emphasis on the context of family. Discussion of treatment approaches and the change process.		
			Psy 322 01	Psychology of Growth and Development (5) 7-week, Daily, 9:10-10:20	Kunz P 302 Core Option
			Human development over the life span. Stages of growth. Conditions necessary for maximizing the potential of the individual.		
			Psy 461 01	Theory of Group Dynamics (2) First, Daily, 10:30-11:30 a.m.	Gerber LA 326
			Explore aspects of group process and dynamics via discussion of a variety of novels. Concurrent with Psy 462.		
			Psy 462 01	Experience of Group Dynamics (3) First, Daily, 11:30 a.m.-12:30 p.m.	Staff LA 326
			Explore aspects of group process and dynamics via an experimental group. Concurrent with Psy 461.		
			Psy 490 01	Symposium on Alcoholism (3) June 21-July 2, Daily, 9:00 a.m.-4:00 p.m.	Royce/Schnell P 404
			Extent, nature, causes, treatment. Prerequisite for Alcohol Studies Program. Also offered under Alc 400 01 and Ed 491 SG 01.		
			Psy 491 SA 01	Psychology of Depression (5) 7-week, Daily, 11:50 a.m.-1:00 p.m.	Halling LA 324
			Examination of the experiences and behaviors of depression, the factors which give rise to this mood disorder, and of several theories and treatment approaches to depression (e.g., psychoanalytic and cognitive). Prerequisite: Permission of Instructor.		
			Psy 496 50	Independent Study (2-5) Arranged	Staff Arr

POLITICAL SCIENCE

Pls 160 01 **American National Government (5)**
7-week, Daily, 7:50-9:00 a.m. Core Option
Examination of the structure and operations of the national government. Critical look at the Reagan perception of public responsibilities. The impact of budget cutbacks in an era of scarcity. More of the same in '82, or a Democratic resurgence?

POLITICAL SCIENCE

Pls 230 01 **Industrial Democracies (5)** **Scharf**
7-week, Daily, 7:50-9:00 a.m. P 352
Core Option
America's future is linked to the future of our major European Allies. What are the cultural, social, and economic roots of liberal democracy in West Germany, France, and Great Britain? Can popular participation and social harmony survive the increasing demands on government to resolve complex social problems in the post-industrial age?

Pls 374 01 **The American Presidency (5)** **Guerrin**
7-week, Daily, 10:30-11:40 a.m. P 351
A study of Presidential powers and constraints; White House decision-making; the role of the Executive Office and the Cabinet, the bureaucracy, Congress. Critical examination of the "Reagan Revolution."

Pls 381 01 **United States Foreign Policy (5)** **Scharf**
8-week, MW, 5:30-8:00 p.m. P 352
Elected officials, bureaucrats, and interest groups in policy making. The relevance of public opinion, economic interest, and the psychology of being Number One. Special emphasis on relations with the Soviet Union, the Middle East, and underdeveloped nations.

Pls 385 01 **Peace and the United Nations (5)** **LaCugna**
8-week, MW, 11:30 a.m.-2:00 p.m. P 352
Prospects for peace today; the strengths and weaknesses of the U.N. system; the U.N. role in political settlements, in the new international economic order, and in human rights.

Pls 496 50 **Independent Study (2-5)** **Staff**
Arranged Arr

PSYCHOLOGY

Psy 100 01 **Introduction to Psychology (5)** **Kunz**
7-week, Daily, 10:30-11:40 a.m. P 302
Core Option
Approach, methods, and content of psychology, conceived as a human science.

Course/Section	Description/Credit Session/Time	Instructor Building/Room	Course/Section	Description/Credit Session/Time	Instructor Building/Room
PUBLIC SERVICE					
Pub 340 01	Issues in Human Resources (5) 8-week, MW, 7:10-9:40 p.m.	Walton-House P 452 BPA Core	Pub 585 01	Management of Change (3) June 25, July 9, 23, August 6 (Fridays), 7:00-10:00 p.m. June 26, July 10, 24, August 7 (Saturdays) 9:10 a.m.-12:10 p.m.	D. Mills E 111
Examination of the relationship between the worker and the working environment, including factors affecting human development and employability. Investigation of fields of personnel, training and development, employment and training, labor and industrial relations.			The future as the realm in which we can act. Forecasting techniques, strategic planning methods, and trend extrapolation tools will be examined and used during class meetings. Topics: tragedy of the commons, diffusion theory, Sicilian Mafia, Los Angeles, French Revolution. Also offered under Bus 585 01.		
Pub 491 SA 01	Life-Work Planning (1) July 30 (Fri.), 7:00-10:00 p.m. July 31 (Sat.), 9:00 a.m.-5:00 p.m.	Walton-House P 351	Pub 586 01	Thesis Preparation (1) June 25, 5:30-7:00 p.m. and three meetings, Arranged	E. Mills P 352
A practicum covering life stages, career patterns and opportunities, changes in the work force, and planning and managing personal change.			Pub 588 01	Thesis (4) Arranged	E. Mills Arr
Pub 491 SB 01	The Training Function (1) July 9, 16, 23, Fridays, 6:00-9:00 p.m.	Lincoln P 351	Pub 592 SA 01	Professional and Academic Writing (3) 8-week, MWF, 5:30-6:40 p.m.	Hungar P 455
This workshop will introduce participants to the process of developing objectives for training sessions. Participants will deliver a lesson based on these objectives as part of the practicum.			Intensive exploration of techniques required for graduate and professional writing. Laboratory environment with close criticism of individual written work. Assignments tailored to the skill level and professional/academic direction and needs of each participant.		
Pub 493 SA 01	Economic Stagnation (1) June 27, July 11 and 25, August 8 (Sundays) 7:00-9:30 p.m.	J. Sawyer P 351	Pub 592 SB 01	Oral Communication for Administrators (3) 8-week, TTh, 5:30-7:00 p.m.	E. Mills P 454
Declining productivity has resulted in a decline of real income for all Americans. Exploration of productivity, differences between America and its economic competitors, and steps needed to reverse this trend toward economic stagnation.			Practicum in use of oral communications by those who are or expect to be in administrative positions. Participants will chair meetings, present reports, discuss policies, debate alternatives, give speeches, experience the range of formal oral communication in modern organizations. Some theory but emphasis on DOING; learning tools of effective presentation through their usage.		
Pub 495 50	Internship (1-5) Arranged	Staff Arr	Pub 595 50	Internship (1-5) Arranged	Staff Arr
Pub 497 50	Independent Study (1-5) Arranged	E. Mills Arr	Pub 597 50	Independent Study (1-5) Arranged	E. Mills Arr
Pub 535 01	Program Evaluation (3) 8-week, Monday, 7:10-10:10 p.m.	Blanchard P 405			
Methods for evaluating local and national public programs. Program objectives, activities and resources, preparation of research design; development of measurement and data collection instruments; interpretation of findings.					
Pub 542 01	Public Personal Management (3) 8-week, Wednesday, 7:10-10:10 p.m.	D. Mills E 111			
Historic, present, and future role of personnel functions. Development of civil service, job classification, performance evaluation, current issues, training, and disciplinary procedures.					
Pub 580 01	Administrative Behavior in Public Organizations (3) 8-week, TTh, 7:10-8:40 p.m.	E. Mills P 454 MPA Core			
Survey in management theory. Scientific management, human relations. Contingency concepts. Organizational leadership and decision-making; organization design, small group influences on behavior, management of conflict.					
			REHABILITATION		
			Rhb 210 01	Field Experience (5) Arranged Credit/No Credit	Elliott Arr
			Rhb 310 01	Field Experience (5) Arranged Credit/No Credit	Elliott Arr
			Rhb 410 50	Field Experience (5-15) Arranged Credit/No Credit	Elliott Arr
			Rhb 425 01	Grief Work in Rehabilitation (3) First, MW, 5:00-8:00 p.m.	Haney P 503
			Loss and the grieving process as they relate to illness, injury, disability, and dying.		

Course/Section	Description/Credit Session/Time	Instructor Building/Room	Course/Section	Description/Credit Session/Time	Instructor Building/Room
Rhb 491 SA 01	Alcohol/Drug Abuse and the Disabled Person (3) July 19-30, Daily, 9:00 a.m.-3:30 p.m. Special institute focusing on the unique problems of alcoholics/drug abusers who are physically disabled. Also offered under Alc 409 SC 01. See fee page for special tuition.	Haney/Schnell/ Guest Lecturers P 401	Sc 280 01	Urban Community (5) 7-week, Daily, 11:50 a.m.-1:00 p.m. Urban community structures and institutions; historic city types; process of urbanization; world cities; aspects of American urban communities.	Larson LA 320
Rhb 492 SA 01	Private Sector Testing (3) 8-week, Thursday, 6:00-9:00 p.m. Overview of tests used in the Private Rehabilitation Sector, test selection, administration, and reporting of results will be emphasized; ethical considerations will be included.	Afanador P 352	SPEECH		
Rhb 493 SA 01	Ethics in Rehabilitation (3) 8-week, Tuesday, 5:00-8:00 p.m. Situations, problems, professional judgment and conflicts of interest in Rehabilitation will be presented to students to facilitate their identification and development of sound ethical services delivery practices.	Thompson P 352	Sph 201 01	Interpersonal Communication (5) 7-week, Daily, 7:50-9:00 a.m. Theory and practice of skills in interpersonal situations. Emphasizes self-awareness, sensitivity to others, and a humanistic approach to communications.	Dore LA 202
Rhb 493 SB 01	Seminar in Private Rehabilitation Practice (3) 8-week, Wednesday, 5:00-8:00 p.m. Private Rehabilitation practices related to report writing and format, initial assessment techniques, specific practices such as labor market survey, and discussion of bills, formats, and procedures; examples will be shared and discussed.	Elliott P 551	SUMORE — Graduate Classes		
Rhb 530 01	Practicum/Rehabilitation (3) Arranged	Haney Arr	RS 502 01	Religious Perspectives in Psychology (2) July 6-16, Daily, 9:45-11:45 a.m. Transition and growth in faith from the religion of youth to the religion of maturity; understanding of faith in this process of growth, problems associated with learning, living, and transmission of the Christian message.	Francoeur P 305
Rhb 531 01	Practicum/Rehabilitation (3) Arranged	Afanador Arr	RS 505 01	Sacramental Theology (3) June 21-July 2, Daily, 9:15-11:45 a.m. Use of the conceptual model of religious belonging, and its application by Christianity; deeper understanding of sacrament from historical perspective as well as the experience of living in a faith community.	Hart P 305
Rhb 532 01	Practicum/Rehabilitation (3) Arranged	Thompson Arr	*RS 506 01	Communication Workshop: Interpersonal Communication Skills (2) June 21-July 2, Daily, 8:00-9:00 a.m. and 2:30-5:00 p.m. Introducing the student to awareness of self and others, development of listening skills, examining barriers to effective interpersonal communication, constructive use of feedback and emphatic responding, developing basics for community support system.	Basham P 304
Rhb 580 50	Internship/Rehabilitation (1-6) Arranged	Afanador Arr	*RS 507 01	Communication Workshop: Conflict Resolution (2) June 21-July 2, Daily, 8:00-9:00 a.m. and 2:30-5:00 p.m. Applying interpersonal communication skills to conflicts within ourselves and between us and others dealing with fear, ignorance, frustration, and violence; alternatives to manipulation and creative alternatives for conflict management.	Leritz P 454
SOCIOLOGY					
Sc 101 01	Fundamentals of Sociology (5) 7-week, Daily, 9:10-10:20 a.m. A description of the science of sociology; analysis of interpersonal relations, associations, and social institutions, and of the way these affect one another and are affected by culture.	Larson P 453 Core Option			
Sc 266 01	Interracial and Interethnic Relations (5) 7-week, TTh, 6:00-8:50 p.m. Concept of race and ethnic group; analysis of the factors in interracial and interethnic tensions; examination of the programs advocated for reducing tension and producing solidarity.	Larson P 401			

Course/Section	Description/Credit Session/Time	Instructor Building/Room	Course/Section	Description/Credit Session/Time	Instructor Building/Room
*RS 508 01	Communication Workshop: Communication and Processes (2) June 21-July 2, Daily, 8:00-9:00 a.m. and 2:30-5:00 p.m.	Basham LA 204	*RS 553 50	Pastoral Counseling (2-3) July 19-August 5, MTWTh, 6:00-8:30 p.m.	Wemhoff/Bannister/Boas/Stanford LA 324
Clarifying expectations, dealing with conflict in constructive ways, understanding patterns of behavior in groups, reducing defensiveness, alternative ways of building satisfying living/working groups.			An experiential approach to learning basic skills in effective counseling considered in relationship to the role of ministers and pastoral concerns.		
RS 510 01	Theologies of the New Testament (3) July 6-16, Daily, 9:15-11:45 a.m.	Topel P 454	*RS 560 01	Practicum I for Religious Education (2) July 6-15, MTWTh, 6:00-8:30 p.m.	Staff LA 324
The nature of revelation, inspiration; historical backgrounds of the writers, unifying hermeneutical principles for New Testament exegesis.			Basic skills for organizing, planning, and finding direction for the religious educator with the assistance of a local supervisor.		
RS 513 01	Foundations of Pastoral Ministry (3) August 2-13, Daily, 9:15-11:45 a.m.	Bader LA 220	*RS 561 01	Practicum II for Religious Education (2) July 6-16, MThF, 8:00-9:30 a.m.	Staff LA 204
Meaning of ministry and of pastoral ministry, with further investigation into different styles of ministry now present in the Church both in traditional ministries and in emerging new ministries.			*RS 562 50	Practicum III for Religious Education (2-4) Arranged	Staff Arr
RS 514 01	Foundations of Religious Education (3) August 2-13, 9:15-11:45 a.m.	Hill LA 204	*RS 563 01	Practicum I for Pastoral Ministry (2) July 6-15, MTWTh, 6:00-8:30 p.m.	Staff LA 324
An examination of the various philosophies and current approaches to religious education. An exploration of the relationships between human learning, religious education, and the Church's ministry.			Includes development of reflective techniques, identification and clarification of supervisory issues, and development of a plan for continued supervision and support in ministry.		
RS 517 01	Adult Religious Learning (3) July 6-16, MTWTh, 6:00-9:00 p.m.	Snelling LA 326	*RS 564 01	Practicum II for Pastoral Ministry (2-4) July 6-16, MThF, 8:00-9:30 a.m.	Staff LA 204
An examination of religious and psycho-social development of adults at various stages and of educational models and strategies to serve the faith development of adults.			*RS 565 50	Practicum III for Pastoral Ministry (2-4) Arranged	Staff Arr
RS 522 01	Youth and Young Adult Religious Development (3) July 19-30, Daily, 9:15-11:45 a.m.	Kimball LA 204	*RS 580 01	Graduate Project (3) Arranged	Staff Arr
A study of youth and young adult religious and psycho-social development and of education models and strategies to serve this development.			RS 590 SA 01	Spirituality and Justice (3) July 6-15, MTWTh, 6:00-9:00 p.m.	Tuite P 404
RS 540 01	Christian Self-Image (2) June 21-July 2, Daily, 9:15-11:45 a.m.	Francoeur P 454	Explores through lectures, readings, and discussions the relationship between faith and active involvement in the struggles for social justice. The participants will study such topics as the relation of church and world, spirituality and praxis, life style, mission, grace, apostolic prayer, and faith as courage.		
An analysis of the development and on-going clarification of our self image as it is dynamically influenced by conscience, the presence of God, and Christian community.			RS 590 SB 01	Prayer (2) July 19-29, MTWTh, 6:00-8:30 p.m.	van der Beek P 404
RS 545 01	The Church As Historically Developing Community (3) July 19-30, Daily, 9:15-11:45 a.m.	Fischer P 454	Prayer is an essential part of the spiritual life. This course will focus on prayer, its various dimensions, and its different forms. Participants will be invited to enter into prayer experiences and to reflect on them.		
Biblical, historical, and theological reflections on the meaning of the Church aimed at a deeper understanding and living of its reality.					

Course/Section	Description/Credit Session/Time	Instructor Building/Room	Course/Section	Description/Credit Session/Time	Instructor Building/Room
RS 590 SC 01	American Religious Experience (2) August 2-13, Daily, 9:45-11:45 a.m.	Padovano P 404	RS 433 01	Theology of Human Sexuality and Marriage (5) 7-week, Daily, 10:30-11:40 a.m.	Sauvain P 453 Core Option II
	Religious experience, Eastern mysticism, biblical Christianity, ministry and authority, the influence of Thomas Merton.			Meaning of the human love experience, its expression in human sexuality, the conditions within which the value is experienced; the relationship of human sexuality and marriage; marriage as the sign of the unity among men with God.	
RS 590 SD 01	Scripture (2) July 19-30, Daily, 9:45-11:45 a.m.	Ward LA 220	RS 450 01	Theology of Liberation (5) 7-week, Daily, 10:30-11:40 a.m.	Foran LA 223 Core Option II
	Focus on concept of justice as a quality of relationship. Will examine the Old Testament's roots of justice especially the concept of "tsedakah" and the challenge to do justice as preached by the Old Testament Prophets.			This course is an exploration of the method and content of a liberating theology. Student "praxis groups" will report on local "limit situations," with an eye to publishing their conclusions.	
*RS 590 50	Independent Study (1-5) Arranged	Staff Arr			
*Open only to full-time students in SUMORE Program.					

THEOLOGY/RELIGIOUS STUDIES

RS 200 01	Judaeo-Christian Origins (5) 7-week, Daily, 7:50-9:00 a.m. Core Option I	O'Leary P 453
	Historical backgrounds and development of Israelite and Jewish religious experience and tradition; its contribution to the foundations of belief in Christ.	
RS 215 01	Johannine Theology (5) 7-week, Daily, 9:10-10:20 a.m.	Jeannot LA 321 Core Option I
	Study of John's theological reflections on the Christ-event, given witness in his gospel, epistles, and the Apocalypse.	
RS 240 01	Prophetic and Wisdom Literature of the Old Testament (5) 7-week, Daily, 11:50 a.m.-1:00 p.m.	Jeannot LA 321 Core Option I
	Study of prophecy in the Ancient Near East and its role in the development of Judaism. Rise of wisdom literature in the Ancient Near East, its expression in Judaism, and its role in the Judaic community.	
RS 320 01	Fundamental Themes in Theology (5) 7-week, Daily, 9:10-10:20 a.m.	Navone LA 223 Core Option II
	Origins, traditional formulations, relevance to present life-experiences of some basic Christian beliefs; investigation of the reasonableness and inter-connection of the truths affirmed; how these truths function as the core of a personal faith-synthesis.	
RS 344 01	Church As Community (5) 7-week, Daily, 7:50-9:00 a.m.	Staff LA 320 Core Option II
	Central biblical themes bearing on the origin and nature of the Christian community; models for understanding the community in its dynamic growth-process and self-structuring in history; elements in the dynamic.	

SEATTLE UNIVERSITY, SEATTLE, WASHINGTON 98122

Application for ADMISSION: regular grad ☐ regular undergrad ☐ \$15 fee

Application for READMISSION: ☐ no fee

CHECK BOXES AS APPLICABLE

FULL LEGAL NAME—LAST		FIRST	MIDDLE	MAIDEN
LOCAL STREET ADDRESS			LOCAL PHONE NO.	
CITY	COUNTY	STATE	ZIP	
PERMANENT HOME ADDRESS			AREA PHONE NO.	
CITY	COUNTY	STATE	ZIP	

WHEN DO YOU WISH TO ENROLL? YEAR
☐ FALL (SEPT)
☐ WINTER (JAN)
☐ SPRING (MAR)
☐ SUMMER (JUN)

LAST ENROLLED AT SU?
QTR/YR

MAJOR WHEN LAST
ENROLLED?

ANY OTHER NAME UNDER
WHICH YOU WERE ENROLLED?

YOUR EDUCATIONAL OBJECTIVES AT SU?

☐ FIRST BACHELOR DEGREE
☐ ADDITIONAL BACHELOR DEGREE
☐ MASTER DEGREE
☐ DOCTORATE
☐ EDUC PROVISIONAL CERTIFICATE
☐ EDUC STANDARD CERTIFICATE
☐ SCHOOL COUNSELING CERTIFICATE
☐ SCHOOL ADMIN. CERTIFICATE
☐ EDUCATIONAL SPECIALIST CERTIFICATE
☐ OTHER CERTIFICATE

CULTURAL OR PROFESSIONAL
ENRICHMENT COURSES

☐ UNDERGRADUATE
☐ GRADUATE
☐ OTHER DESCRIBE

ADMISSIONS INFORMATION

ADMISSIONS INFORMATION:
 IN WHICH SCHOOL DO YOU WISH TO ENROLL?
☐ ARTS & SCIENCES
☐ BUSINESS
☐ EDUCATION
☐ INSTITUTE OF PUBLIC SERVICE
☐ MATTEO RICCI COLLEGE
☐ NURSING
☐ SCIENCE & ENGINEERING
☐ GRADUATE

WHAT MAJOR DESIRED?

RESIDENCE INFORMATION

WASHINGTON RESIDENT? <input type="checkbox"/> Yes <input type="checkbox"/> No	MO. DAY YR. BIRTHDATE	BIRTHPLACE
CITIZEN OF US <input type="checkbox"/> Yes <input type="checkbox"/> No	CITIZENSHIP, IF NOT US TYPE OF VISA	

BIOGRAPHICAL INFORMATION

SEX <input type="checkbox"/> FEMALE <input type="checkbox"/> MALE	MARITAL STATUS <input type="checkbox"/> SINGLE <input type="checkbox"/> MARRIED	ETHNIC ORIGIN (OPTIONAL) <input type="checkbox"/> AMERICAN INDIAN <input type="checkbox"/> ASIAN AMERICAN	<input type="checkbox"/> BLACK AFRO AMERICAN <input type="checkbox"/> HISPANIC AMERICAN <input type="checkbox"/> WHITE AMERICAN	<input type="checkbox"/> FOREIGN NATIONAL <input type="checkbox"/> OTHER	RELIGION (OPTIONAL) <input type="checkbox"/> CATHOLIC <input type="checkbox"/> OTHER
---	---	---	---	---	--

IF YOU WERE ENROLLED AT S.U. WITHIN THE LAST YEAR: IF YOU WISH THE SAME MAJOR AND PROGRAM, AND IF YOU HAVE
 TAKEN NO INTERVENING COURSES AT OTHER UNIVERSITIES, CHECK BOX AT FAR RIGHT AND SKIP TO SIGNATURE.

NOTE: IF THIS IS YOUR FIRST APPLICATION FOR GRADUATE DEGREE PROGRAM, DO NOT SKIP.

☐ NO INTERVENING
COURSE WORK

ARE YOU NOW ENROLLED ELSEWHERE? <input type="checkbox"/> Yes <input type="checkbox"/> No	WHAT ARE YOU STUDYING AND WHEN WILL YOU FINISH?
--	---

LIST COLLEGIATE INSTITUTIONS, INCLUDING SEATTLE UNIVERSITY, IN ORDER OF ATTENDANCE

INSTITUTION	CITY	STATE	DATES ATTENDED FROM TO	DEGREE	DATE RECEIVED	MAJOR
1)						
2)						
3)						
4)						
5)						

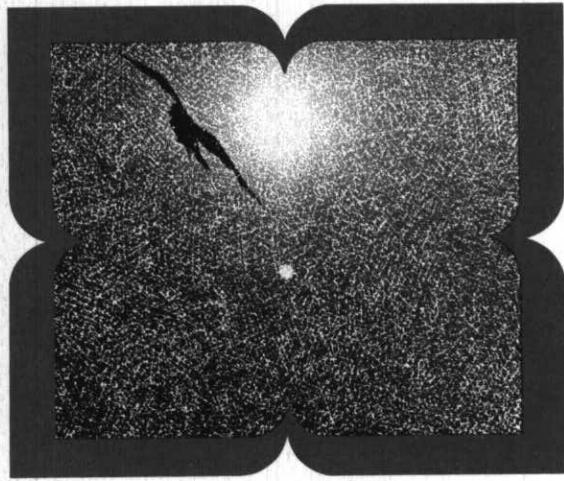
CURRENT EMPLOYER—NAME OF FIRM	JOB TITLE	BUSINESS PHONE
CURRENT EMPLOYER—BUSINESS ADDRESS	CITY STATE ZIP	DATE EMPLOYED
PREVIOUS EMPLOYERS	CITY AND STATE	DATES FROM—MO/YR TO MO/YR
		JOB TITLE

I CERTIFY THAT THE FOREGOING INFORMATION CONTAINED IN THIS APPLICATION IS TRUE AND CORRECT. I UNDERSTAND THAT MIS-
 REPRESENTATION OR OMISSION OF INFORMATION SUCH AS FAILURE TO LIST ALL SCHOOLS, COLLEGES, OR UNIVERSITIES ATTENDED
 MAY RESULT IN THE DENIAL OF THIS APPLICATION OR MY SUBSEQUENT DISMISSAL FROM THE UNIVERSITY AND LOSS OF CREDIT.

MR ☐ MRS ☐ REV ☐
 MS ☐ SR ☐ DR ☐
 MISS ☐ BRO ☐

SUMMER SESSION

JUNE 21 TO AUGUST 13, 1982



SEATTLE UNIVERSITY

Director Summer Session
Seattle University
Seattle, WA 98122