

Seattle University

ScholarWorks @ SeattleU

Lecture Outlines, 1962-ca.1963; n.d., Edwin
Mortimer Standing, ca.1963; n.d.

Series II: Literary Productions, ca. 1919-1979;
n.d.

July 2022

Box 06, Folder 42 - "Sensorial Geometry" (E.M.S - ED-437 folder)

Edwin Mortimer Standing

Follow this and additional works at: <https://scholarworks.seattleu.edu/standing-lecture-outlines>

Recommended Citation

Standing, Edwin Mortimer, "Box 06, Folder 42 - "Sensorial Geometry" (E.M.S - ED-437 folder)" (2022).
Lecture Outlines, 1962-ca.1963; n.d., Edwin Mortimer Standing, ca.1963; n.d. 38.
<https://scholarworks.seattleu.edu/standing-lecture-outlines/38>

This Article is brought to you for free and open access by the Series II: Literary Productions, ca. 1919-1979; n.d. at ScholarWorks @ SeattleU. It has been accepted for inclusion in Lecture Outlines, 1962-ca.1963; n.d., Edwin Mortimer Standing, ca.1963; n.d. by an authorized administrator of ScholarWorks @ SeattleU.

Seasonal Geometry

①

Geometric Cabinet

~~Math~~ Study of attributes
~~Qualities~~
~~Shapes~~

Capital PKT Bd Sr lung Sr Columns —	} -	Dimensions	} <u>Natural</u> Attributes
---	-----	------------	--------------------------------

These mostly — not all — Man-made

Geometric Shapes!

What! Geometry to 4000 yrs !! If you know
16000 yrs.....

Geometry An Ancient Study

History of these things

Geo mety.	Measurement of land.
(Geography Geology)	Drawing of land working.

Staircase in Egypt

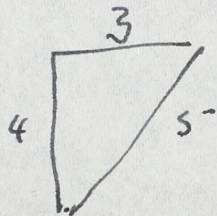
Nile floods

Deposits — boundaries gone

Measure land all

No Priests.

Know v. little



Keats "when Sages turned to Egypt for their love"

The Greek Mind
Pythagoras
Plato

Plato's Academy
"let no one ignorant of Geometry ----
could argue -"

Proof
Q.E.D.
School of Dialectics.
Socratic.

Psychological not Logical
Approach to a Different kind of Knowledge

Learn a Subject according to its
Sensory Periods

Eg. Letters - just a seasonal paper
- Sight
- Sound
- touch

e. m. - S.

So in Geometry.
Sensory
The Cabinet

With movement

"We never give to the eye more than we give
to the hand"

Visual Aids - not enough

Presentation

① Caricature figures

"Feeling to shapes" Centour
and Soshato
Eye & touch

② Whole Tray

Circles.

Rectangles

Triangles — kinds.

Trapezium

U gram.

Names (a)

③

⑥ In writing
on Cards

③ With Card a

② With definitions.
Diameter.
Meridian.

— b
— c

Helping Nature

Towards abstraction

○ ○ ○ ○ ○ *idea.*

See with mind

A myrtagon.

They fascinate to children

The Effect

(4)

Keys to the Universe

"Material explorations"

Heels to C.

"Brings about a sudden & unlooked for increase in the power of making discoveries. (not abandoned) without being how to observe as if eyes were suddenly opened -

Things take on a new significance

The sky is blue

My shoes are small

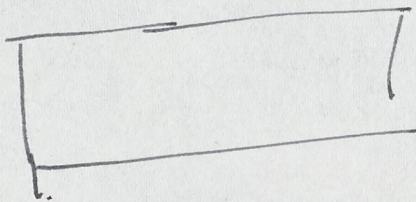
Daddy's large

The Cardinal

The Workman House in Milan

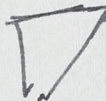
Bulls

(1)



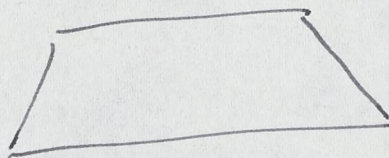
rectangle

(2)



triangle

3



trapezium.

What have you done to my child?

If I had been educated like that - - - Pure Gardens

What does it mean?

It is not that he discovers new objects when he says "The sky is blue, the hand is smooth, the plate is a circle, he does not

discover sky, land, plants — but he does 5
- covers them position in a new order
in his mind

This "Heavy Cross" is being pushed further
back as it comes grow

This order comes from a light shimmering
within

Going Beyond to Limits

Smaller than the smallest cube
"Pilgrims in Hassenah
to us to seek to go always a little further

Tennyson's Ulysses

"This lies to ^{day} deep, the vessel puffed her
sails; to deep means round with many
voices —

Come my friends & strike to
sounding furrows for sail beyond to sunset
"My purpose holds to follow knowledge
like a sinking star
beyond to almost verge of
human thought
